

ASSOTECH BUSINESS CRESTERRA



CUSHMAN &
WAKEFIELD



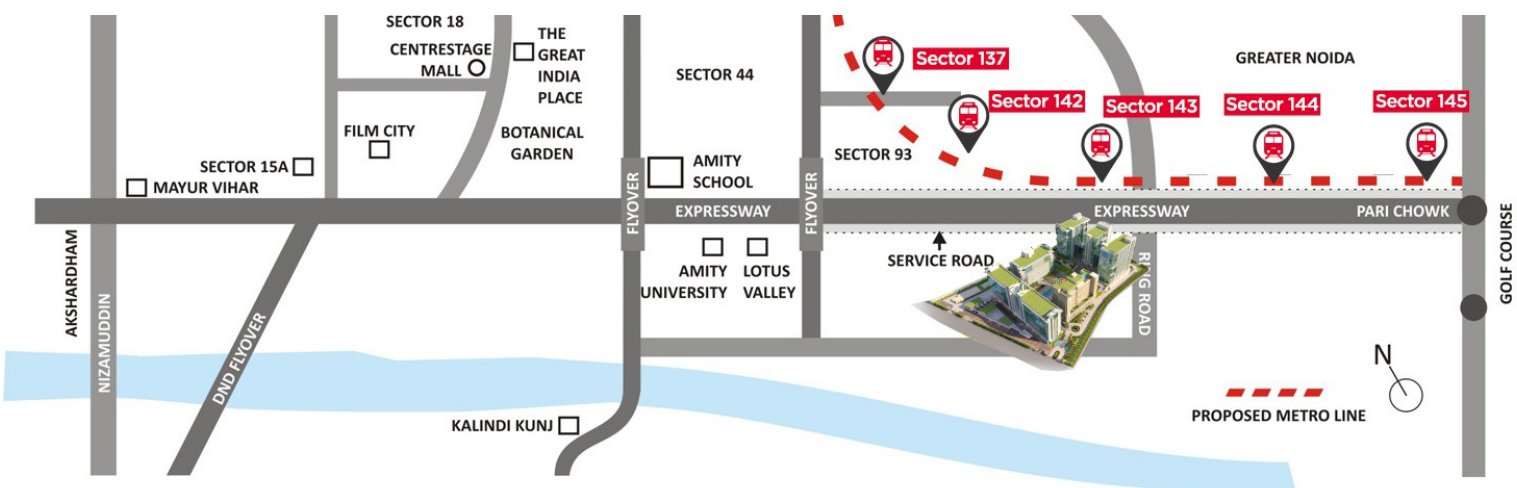
ASSOTECH

ABOUT ASSOTECH BUSINESS CRESTERRA

- North India's only **fully integrated IT park**
- Spread over **14 acres** of Prime land
- Complex of **7 Towers & retail block** - Sandal street, that when put together offer **1.78 Million SF** development.
- **Single Complex** with common facilities and amenities comprising of Retail, F&B, entertainment, Sandal Suites operated by Lemon Tree Hotels
- **195** well-appointed suites, **IT/ITES Office Spaces & operational Regus Business Center**

LOCATION ACCESS

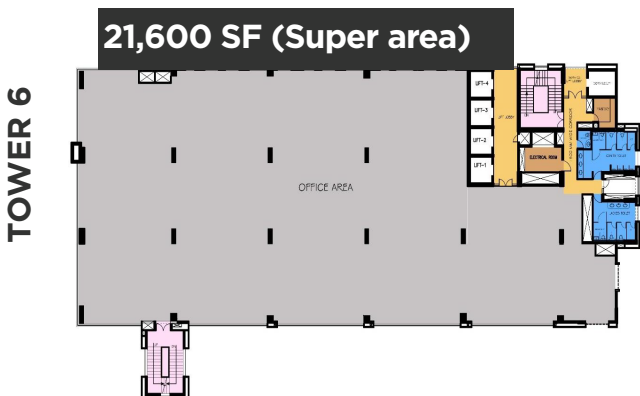
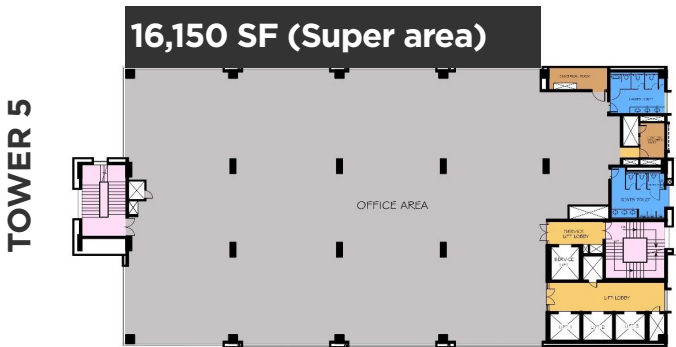
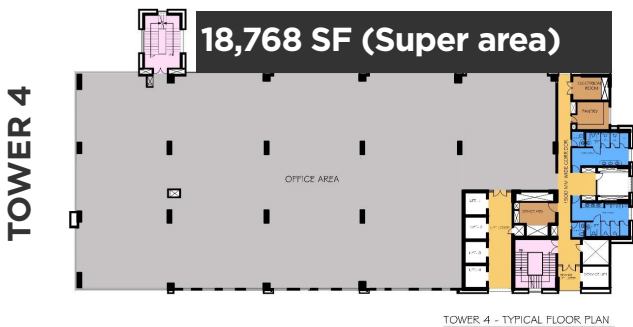
- 50 minutes from Indra Gandhi international Airport, New Delhi.
- Upcoming **Jewar Airport** is going to raise connectivity quotient much higher.
- Quick access to **New Delhi** and rest of the NCR through **Metro connectivity**.
- Easy **Expressway** access with 2 'two-lane' service roads and 2 'six-lane' sector roads, one on either side of Noida expressway.
- Upcoming **FNG connectivity** will boost the connectivity.
- Proximity to key commercial and IT Hubs, schools and hospitals Best malls and key attractions within **20 minutes drive**.



PROPERTY DETAILS

Building name	ASSOTECH BUISNESS CRESTERRA
Address	Sector-135 NOIDA-201304
Developer	ASSOTECH
Available tower for lease	Tower 4, 5 and 6
Typical floor plate(sft)	Between 16,500 and 22,000
Property type	Commercial
Efficiency	75%

FLOOR PLANS



FACILITIES & AMENITIES



Multi Tier Security



Independent And Multi Tenanted Office Blocks



Day Care



Open Air Theatre



Bank Branch and ATM



Recreational zones



Traffic Free Zones, Plaza Spaces



Pharmacy



Conference Facility



Innovative Designed High Street Retail Hub

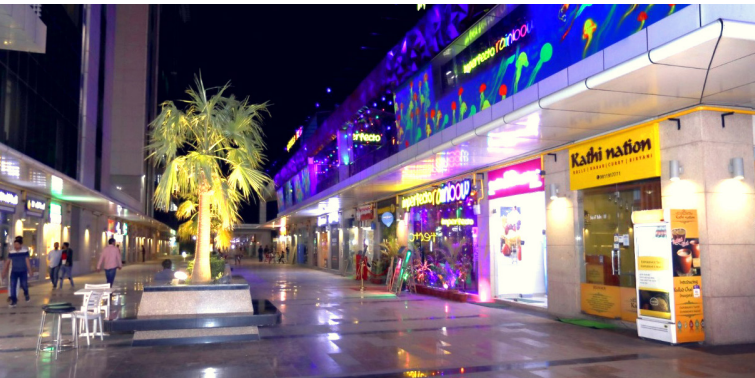
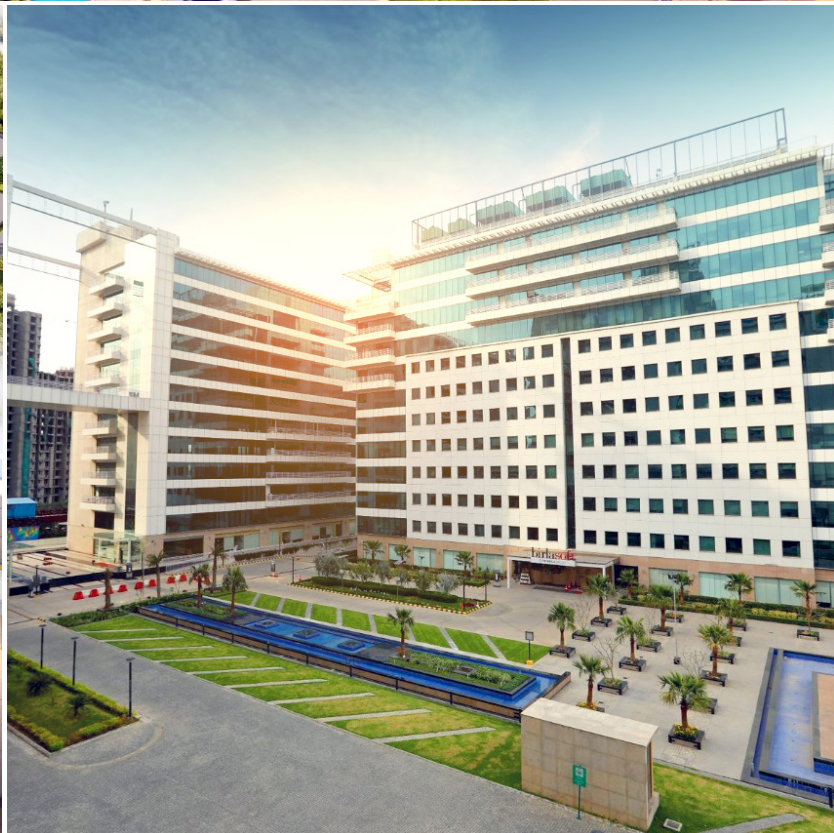


Outdoor Event Space, Central Green Space & Water Features



Total Number Of Car Parks 2700 (Approx.)

PROPERTY IMAGES



For Further Information, Contact:

SANCHIT MEATTLE
Senior Associate Director
Sanchit.Meattle@ap.cushwake.com
+91 971 739 7734

PRAYAS KHANNA
Associate Director
Prayas.Khanna@cushwake.com
+91 981 098 4270

SHUBHAM RAI
Manager
Shubham.Rai@cushwake.com
+91 99530 53389