

MEDICAL OR PROFESSIONAL OFFICE FOR LEASE

# 10011 N. Foothill Boulevard

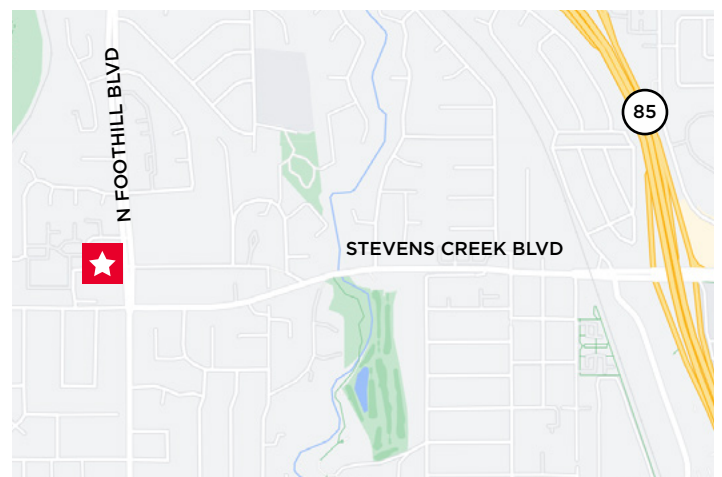
Suite 110, Cupertino, CA



## ±1,234 SF Medical or Professional Office For Lease

### PROPERTY HIGHLIGHTS

- Ideally located at Corner of Stevens Creek/ Foothill Blvd.
- Available Space: ±1,234 SF
- Rent: \$4,936/month Modified Gross
- Modified Gross to include base rent, property taxes, property insurance, CAM and HOA (Tenant responsible for utilities and janitorial)
- Excellent Parking
- Conference room, private offices, kitchen, open office area, private restroom
- Easy access From Hwy 280 and Stevens Creek



#### Drew Arvay Cushman & Wakefield

Managing Director  
+1 408 436 3647  
drew.arvay@cushwake.com  
LIC #00511262

300 Santana Row, Fifth Floor  
San Jose, California  
main +1 408 615 3400  
[cushmanwakefield.com](http://cushmanwakefield.com)

#### Aaron Fritz, CCIM Kidder Mathews

Senior Vice President  
+1 408 588 2398  
aaron.fritz@kidder.com  
LIC #01216555

10 Almaden Blvd, Suite 550  
San Jose, California  
main +1 408 970 9400  
[kidder.com](http://kidder.com)

MEDICAL OR PROFESSIONAL OFFICE FOR LEASE

**10011 N. Foothill Boulevard**

Suite 110, Cupertino, CA



**IMAGE GALLERY**



**Drew Arvay**  
**Cushman & Wakefield**  
Managing Director  
+1 408 436 3647  
drew.arvay@cushwake.com  
LIC #00511262

300 Santana Row, Fifth Floor  
San Jose, California  
main +1 408 615 3400  
[cushmanwakefield.com](http://cushmanwakefield.com)

**Aaron Fritz, CCIM**  
**Kidder Mathews**  
Senior Vice President  
+1 408 588 2398  
aaron.fritz@kidder.com  
LIC #01216555

10 Almaden Blvd, Suite 550  
San Jose, California  
main +1 408 970 9400  
[kidder.com](http://kidder.com)

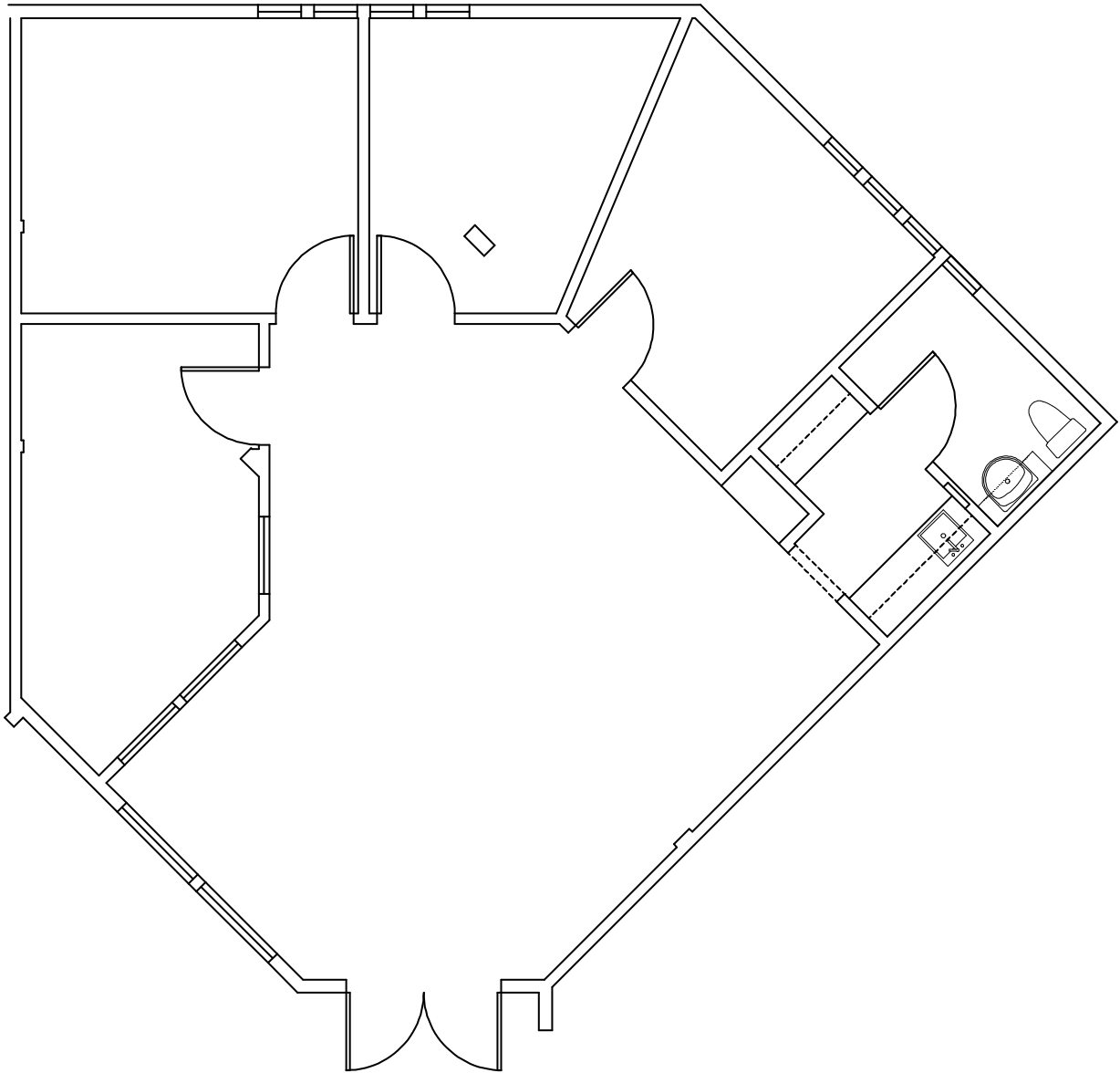
MEDICAL OR PROFESSIONAL OFFICE FOR LEASE

# 10011 N. Foothill Boulevard

Suite 110, Cupertino, CA



## FLOOR PLAN | ±1,234 SF



**Drew Arvay**  
**Cushman & Wakefield**  
Managing Director  
+1 408 436 3647  
drew.arvay@cushwake.com  
LIC #00511262

300 Santana Row, Fifth Floor  
San Jose, California  
main +1 408 615 3400  
[cushmanwakefield.com](http://cushmanwakefield.com)

**Aaron Fritz, CCIM**  
**Kidder Mathews**  
Senior Vice President  
+1 408 588 2398  
aaron.fritz@kidder.com  
LIC #01216555

10 Almaden Blvd, Suite 550  
San Jose, California  
main +1 408 970 9400  
[kidder.com](http://kidder.com)

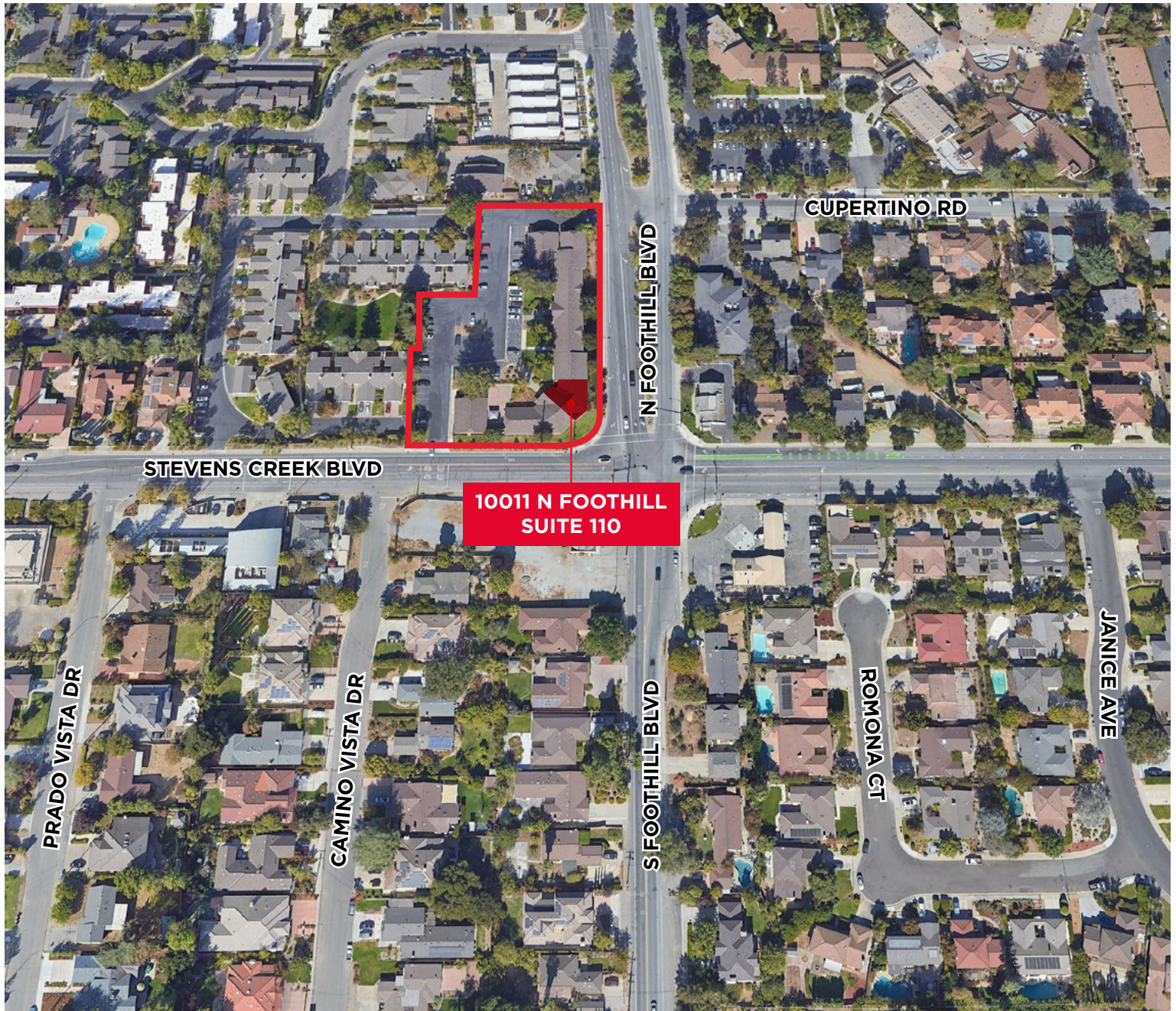
MEDICAL OR PROFESSIONAL OFFICE FOR LEASE

# 10011 N. Foothill Boulevard

Suite 110, Cupertino, CA



## AERIAL



**Drew Arvay**  
Cushman & Wakefield  
Managing Director  
+1 408 436 3647  
drew.arvay@cushwake.com  
LIC #00511262

300 Santana Row, Fifth Floor  
San Jose, California  
main +1 408 615 3400  
[cushmanwakefield.com](http://cushmanwakefield.com)

**Aaron Fritz, CCIM**  
Kidder Mathews  
Senior Vice President  
+1 408 588 2398  
aaron.fritz@kidder.com  
LIC #01216555

10 Almaden Blvd, Suite 550  
San Jose, California  
main +1 408 970 9400  
[kidder.com](http://kidder.com)