

FOR LEASE

1000 Waverley Street

Rare Southwest Office
Opportunity Ready For
Tenant Fixturing

Tyson Preisentanz
Senior Vice President & Principal
T 204 928 5002
C 204 782 6183
tyson.preisentanz@cwstevenson.ca

1000
WAVERLEY STREET

1000



**CUSHMAN &
WAKEFIELD**
Winnipeg



Stevenson

FOR LEASE

1000 Waverley Street



(+/-) 5,111 sf Available Immediately

PROPERTY HIGHLIGHTS

- Incredible southwest office opportunity close to many retail and restaurant amenities
- Open concept floor plan
- Ample on site parking
- Excellent exposure on Waverley Street
- Public transportation access

Lease Rate: \$13.50 psf Net

CAM & Tax: \$7.35 psf (2022 est.)

Plus 5% of gross rent



FOR LEASE
1000 Waverley Street

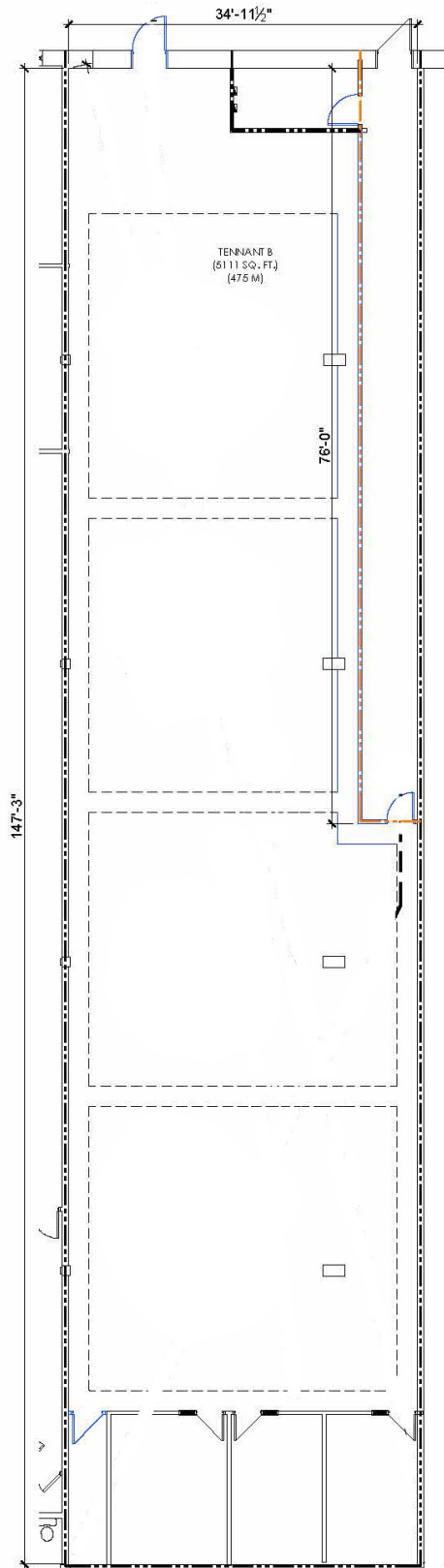


Independently Owned and Operated / A Member of the Cushman & Wakefield Alliance ©2021 Cushman & Wakefield. All rights reserved. The information contained in this communication is strictly confidential. This information has been obtained from sources believed to be reliable but has not been verified. NO WARRANTY OR REPRESENTATION, EXPRESS OR IMPLIED, IS MADE AS TO THE CONDITION OF THE PROPERTY (OR PROPERTIES) REFERENCED HEREIN OR AS TO THE ACCURACY OR COMPLETENESS OF THE INFORMATION CONTAINED HEREIN, AND SAME IS SUBMITTED SUBJECT TO ERRORS, OMISSIONS, CHANGE OF PRICE, RENTAL OR OTHER CONDITIONS, WITHDRAWAL WITHOUT NOTICE, AND TO ANY SPECIAL LISTING CONDITIONS IMPOSED BY THE PROPERTY OWNER(S). ANY PROJECTIONS, OPINIONS OR ESTIMATES ARE SUBJECT TO UNCERTAINTY AND DO NOT SIGNIFY CURRENT OR FUTURE PROPERTY PERFORMANCE.

FOR LEASE 1000 Waverley Street



FLOOR PLAN



Tyson Preisentanz
Senior Vice President & Principal
T 204 928 5002
C 204 782 6183
tyson.preisentanz@cwstevenson.ca

Independently Owned and Operated / A Member of the Cushman & Wakefield Alliance ©2020 Cushman & Wakefield. All rights reserved.
The information contained in this communication is strictly confidential.

This information has been obtained from sources believed to be reliable but has not been verified. NO WARRANTY OR REPRESENTATION, EXPRESS OR IMPLIED, IS MADE AS TO THE CONDITION OF THE PROPERTY (OR PROPERTIES) REFERENCED HEREIN OR AS TO THE ACCURACY OR COMPLETENESS OF THE INFORMATION CONTAINED HEREIN, AND SAME IS SUBMITTED SUBJECT TO ERRORS, OMISSIONS, CHANGE OF PRICE, RENTAL OR OTHER CONDITIONS, WITHDRAWAL WITHOUT NOTICE, AND TO ANY SPECIAL LISTING CONDITIONS IMPOSED BY THE PROPERTY OWNER(S). ANY PROJECTIONS, OPINIONS OR ESTIMATES ARE SUBJECT TO UNCERTAINTY AND DO NOT SIGNIFY CURRENT OR FUTURE PROPERTY PERFORMANCE.

