



[▶ Virtual Tour](#)

BOWERY DISTRICT RETAIL FOR LEASE

156-176 S Main Street, Akron, Ohio 44308

BOWERY

DISTRICT

FEATURES

- Historic redevelopment in downtown Akron
- 2 months free rent included for a 5 year lease
- Unique retail suite with outdoor patio and access to Lock 4
- 92 high end apartments, almost fully leased
- High exposure adjacent to Lock 3, Lock 4 and the Akron Civic Theatre which draw 500,000 people per year
- Less than one (1) mile from The University of Akron
- Patio space available facing Lock 3 live music venue
- Over 2,000 parking spaces in the adjoined Cascade Parking Deck
- Join Crave Restaurant, now open!

AVAILABLE SPACE

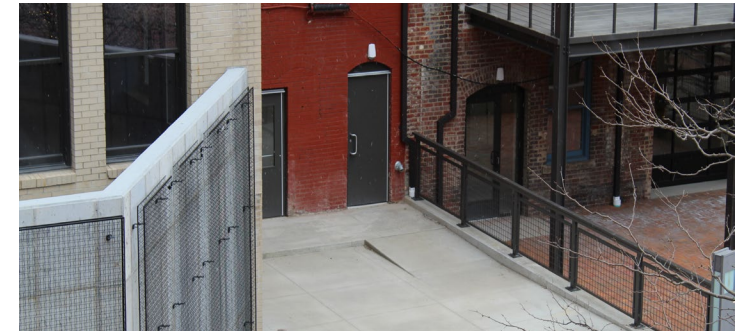
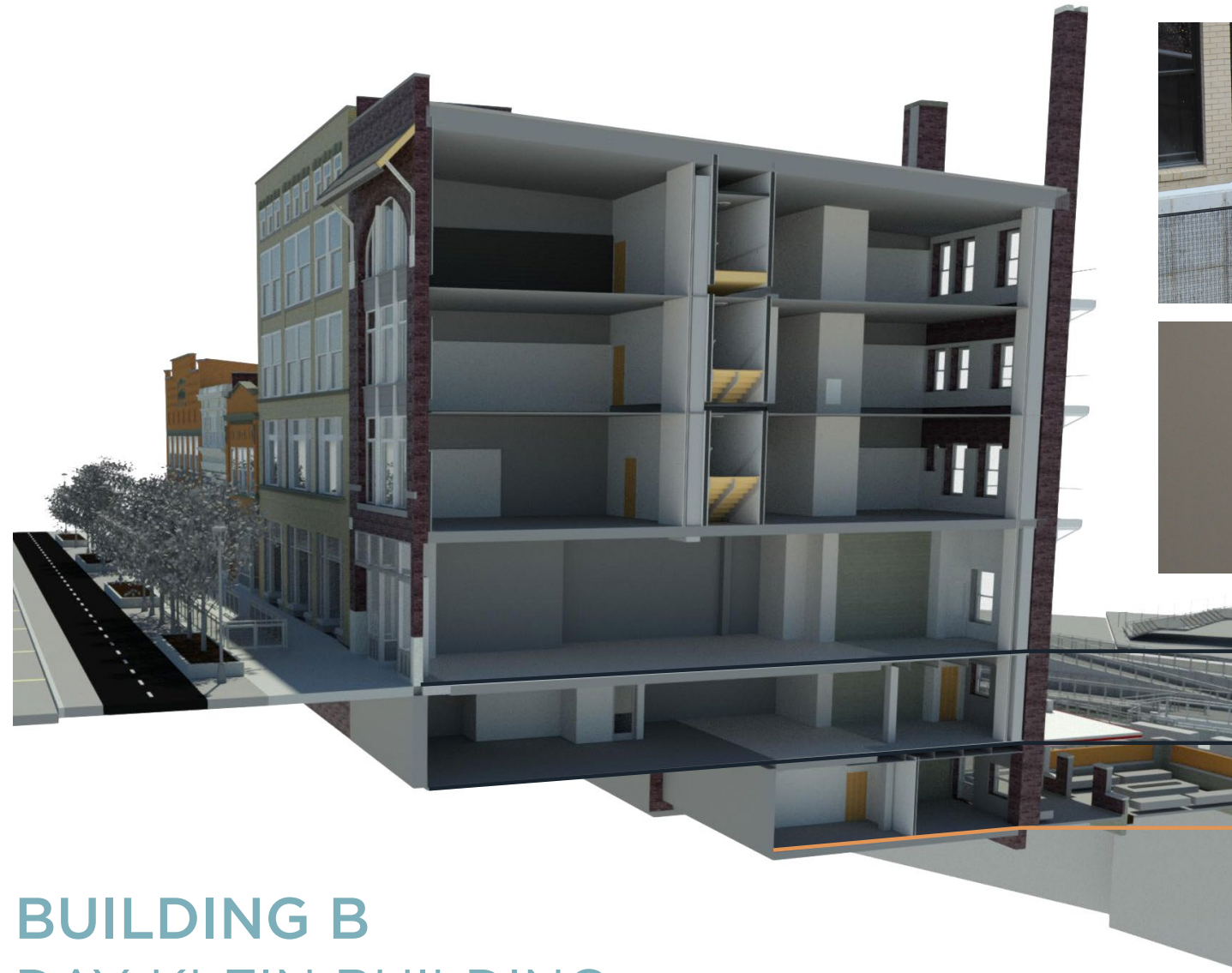
- | | | |
|----------|---|---|
| A | Akron Savings & Loan Building
156 S Main Street | <i>Fully Leased</i> |
| B | Day-Klein Building
164 S Main Street | <i>Canal 1: 649 SF</i> |
| C | Osterman Building
168 S Main Street | <i>Fully Leased</i> |
| D | Pedestrian Walkthrough
172 S Main Street | <i>Access to the canal, parking deck & Lock 3</i> |
| E | Standard Savings Building
174 S Main Street | <i>Fully Leased</i> |



PROPERTY WEBSITE 

BOWERY DISTRICT

AVAILABLE SPACE: BUILDING B



MAIN: LEASED

CANAL 2: LEASED

CANAL 1: 649 SF



MORE INFORMATION 

BUILDING B
DAY-KLEIN BUILDING
164 S MAIN STREET



60,000
Avg Daytime Population

2,000,000
Towpath Users

30,000
Akron University
Students & Staff

500,000
Annual Visitors to Lock 3 and 4
& The Akron Civic Theatre

530,000
Metropolitan
Shoppers & Diners

8,000
Pedestrians within
a 5 Minute Walk

- 1 Bowery District
- 2 Akron Civic
- 3 Lock 3
- 4 Children's Museum
- 5 Key Bank
- 6 US Bank
- 7 PNC Bank
- 8 Huntington Bank
- 9 Chase Bank
- 10 Public Library



RYAN FISHER
Senior Vice President
+1 216 525 1497
rfisher@crescorealestate.com

ALEX SMITH
Senior Associate
+1 216 525 1490
asmith@crescorealestate.com

RICO A. PIETRO, SIOR
Principal
+1 216 525 1473
rpietro@crescorealestate.com

Cushman & Wakefield | CRESCO
3 Summit Park Drive, Suite 200
Cleveland, OH 44131
crescorealestate.com



©2022 Cushman & Wakefield. All rights reserved. The information contained in this communication is strictly confidential. This information has been obtained from sources believed to be reliable but has not been verified. NO WARRANTY OR REPRESENTATION, EXPRESS OR IMPLIED, IS MADE AS TO THE CONDITION OF THE PROPERTY (OR PROPERTIES) REFERENCED HEREIN OR AS TO THE ACCURACY OR COMPLETENESS OF THE INFORMATION CONTAINED HEREIN, AND SAME IS SUBMITTED SUBJECT TO ERRORS, OMISSIONS, CHANGE OF PRICE, RENTAL OR OTHER CONDITIONS, WITHDRAWAL WITHOUT NOTICE, AND TO ANY SPECIAL LISTING CONDITIONS IMPOSED BY THE PROPERTY OWNER(S). ANY PROJECTIONS, OPINIONS OR ESTIMATES ARE SUBJECT TO UNCERTAINTY AND DO NOT SIGNIFY CURRENT OR FUTURE PROPERTY PERFORMANCE.