

FOR SUBLEASE



**920 W FREMONT AVE
SUNNYVALE, CA**

OFFICE/RETAIL | ±5,338 SF

HIGHLIGHTS

- Located at Prime Signalized Intersection of Fremont and Mary
- Prominent Building Signage Opportunity
- Strong Traffic Counts
- Walk to Shops and Restaurants
- Easy Access to Highway 85
- LED: 3/31/2024

CONTACT US:

Greg Berry

+1 408 910 9552

greg.berry@cushwake.com

LIC #01718959

Miki Correa

+1 408 642 0826

miki.correa@cushwake.com

LIC #01718959

300 Santana Row, Fifth Floor

San Jose, California

+1 408 615 3400

cushmanwakefield.com



**CUSHMAN &
WAKEFIELD**

[View Site Specific COVID 19 Prevention Plan](#)

©2022 Cushman & Wakefield. All rights reserved. The information contained in this communication is strictly confidential. This information has been obtained from sources believed to be reliable but has not been verified. No warranty or representation, express or implied, is made as to the condition of the property (or properties) referenced herein or as to the accuracy or completeness of the information contained herein, and same is submitted subject to errors, omissions, change of price, rental or other conditions, withdrawal without notice, and to any special listing conditions imposed by the property owner(s). Any projections, opinions or estimates are subject to uncertainty and do not signify current or future property performance.

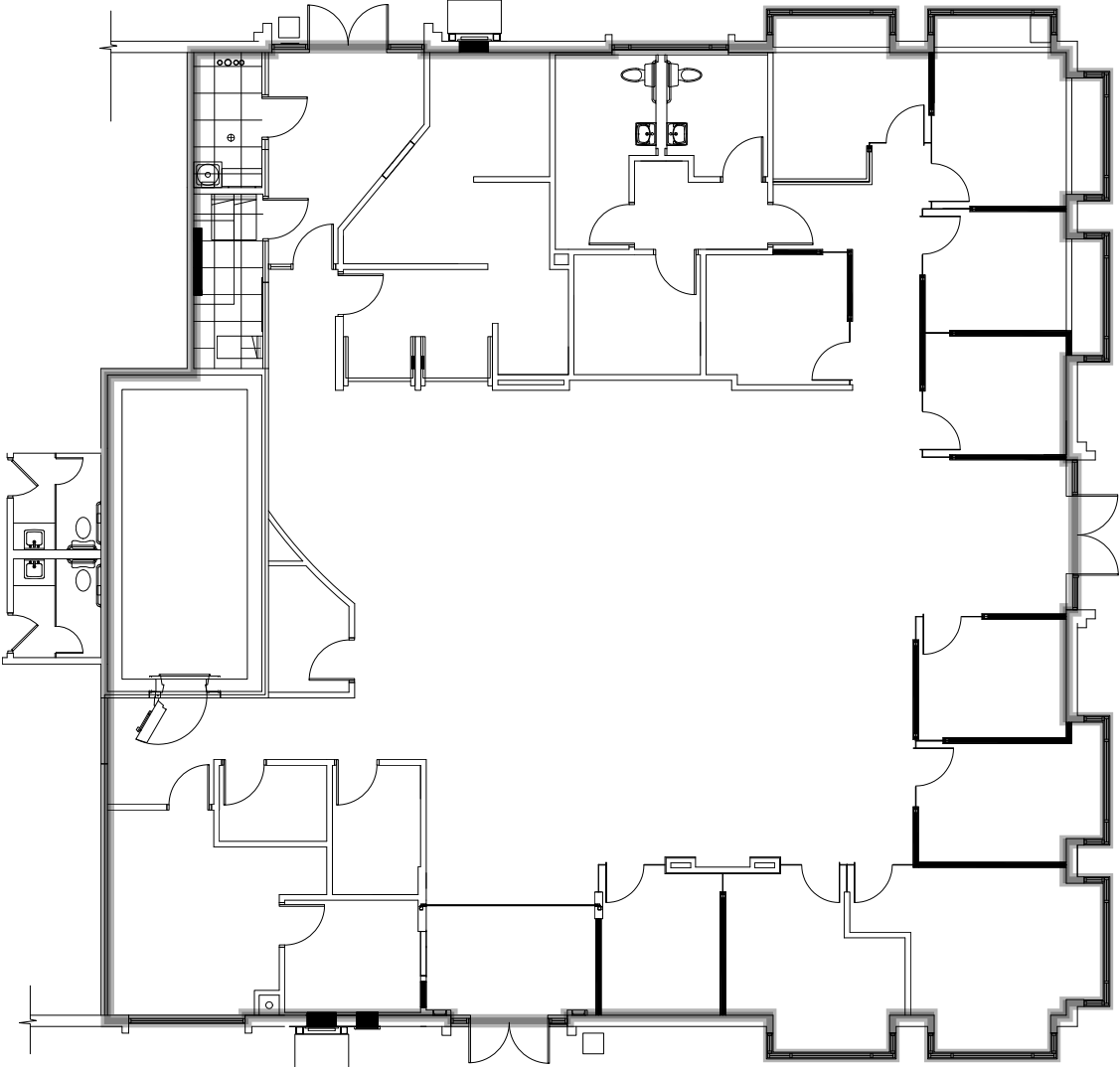
FOR SUBLEASE

920 W FREMONT AVE, SUNNYVALE, CA

±5,338 SF Office/Retail



FLOOR PLAN



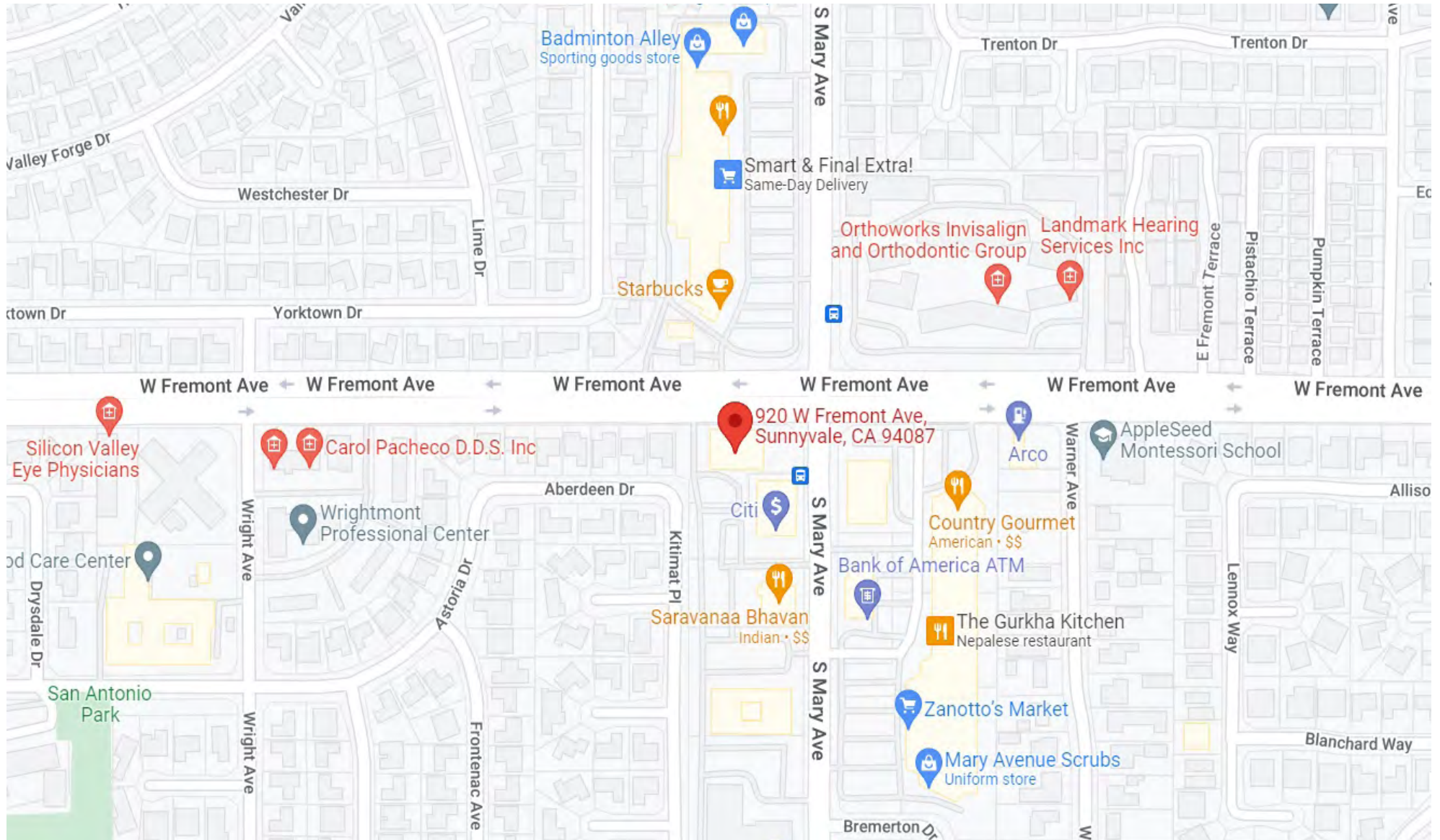
FOR SUBLEASE

920 W FREMONT AVE, SUNNYVALE, CA

±5,338 SF Office/Retail



LOCATION MAP



FOR SUBLEASE

920 W FREMONT AVE, SUNNYVALE, CA

±5,338 SF Office/Retail



CONTACT US:

Greg Berry

+1 408 910 9552

greg.berry@cushwake.com

LIC #01718959

Miki Correa

+1 408 642 0826

miki.correa@cushwake.com

LIC #01718959

300 Santana Row, Fifth Floor

San Jose, California

+1 408 615 3400

cushmanwakefield.com



[View Site Specific COVID 19 Prevention Plan](#)

©2022 Cushman & Wakefield. All rights reserved. The information contained in this communication is strictly confidential. This information has been obtained from sources believed to be reliable but has not been verified. No warranty or representation, express or implied, is made as to the condition of the property (or properties) referenced herein or as to the accuracy or completeness of the information contained herein, and same is submitted subject to errors, omissions, change of price, rental or other conditions, withdrawal without notice, and to any special listing conditions imposed by the property owner(s). Any projections, opinions or estimates are subject to uncertainty and do not signify current or future property performance.