



201 SIGMA DRIVE

SUMMERVILLE, SC 29483

2,034 - 7,293 RSF AVAILABLE

201
SIGMA



CONTACTS:

NICK TANANA
+1 843 724 0109
nick.tanana@cushwake.com

BRADY DASHIELL
+1 843 724 0106
brady.dashiell@cushwake.com

201 Sigma Drive is a premier trophy office building located directly in Charleston's path of growth. Located just 25 miles from historic downtown Charleston in the thriving Nexton community in Summerville, which was recently named the 2021 Master Planned Community of the Year by the National Association of Home Builders. 201 Sigma Drive is more than just a certified LEED Gold Class A+ office building, it is a part of a mixed-use community that fosters business growth and attracts a talented workforce.

HIGHLIGHTS



Premier Trophy
Class A+ Office Building



Certified LEED Gold



High Visibility and Easy Access
from Interstate 26



Numerous Walkable Amenities



Close Proximity to
Charleston Int'l Airport



Ample Parking



Electric Car Chargers



LOCATION AERIAL



FUTURE COMMERCIAL/
RESIDENCIAL DEVELOPMENT

BROWN
FAMILY PARK

PARKS AT
NEXTON

**201
SIGMA**

N
SQ

NEXTON SQUARE

Halls Chophouse	Poogan's
Taco Boy	Southern Kitchen
Big Daddy's Burger Bar	Vicious Biscuit
Fuji Sushi	D'Allesandros Pizza
Tropical Smoothie Café	Work N' Roll
Page's Okra Grill	Bkedshop Donuts

RESIDENCE
INN AT
MARRIOTT

COURTYARD
MARRIOTT

STARBUCKS

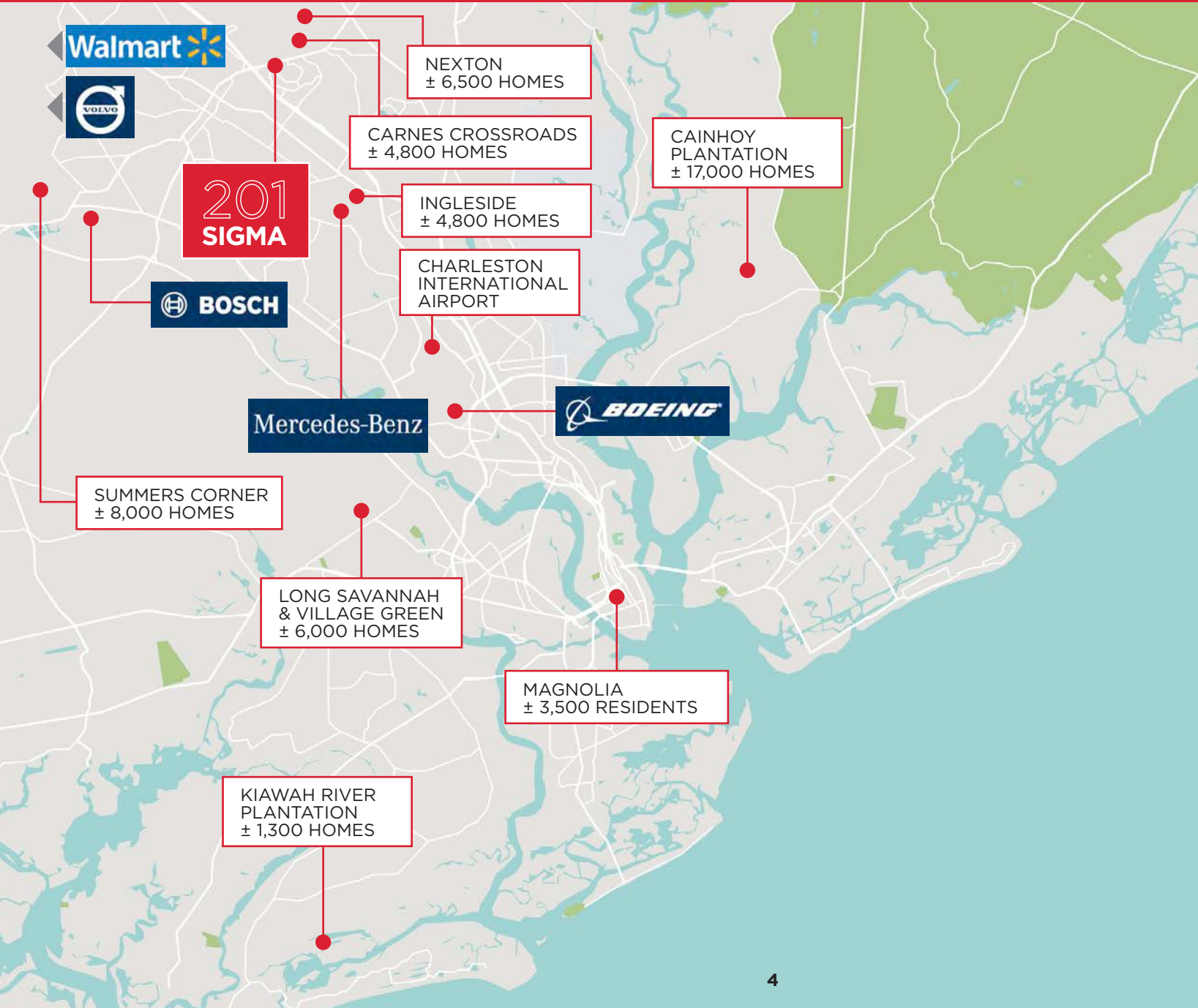
CAROLINA
ALE HOUSE

Sigma Drive

Rose Drive

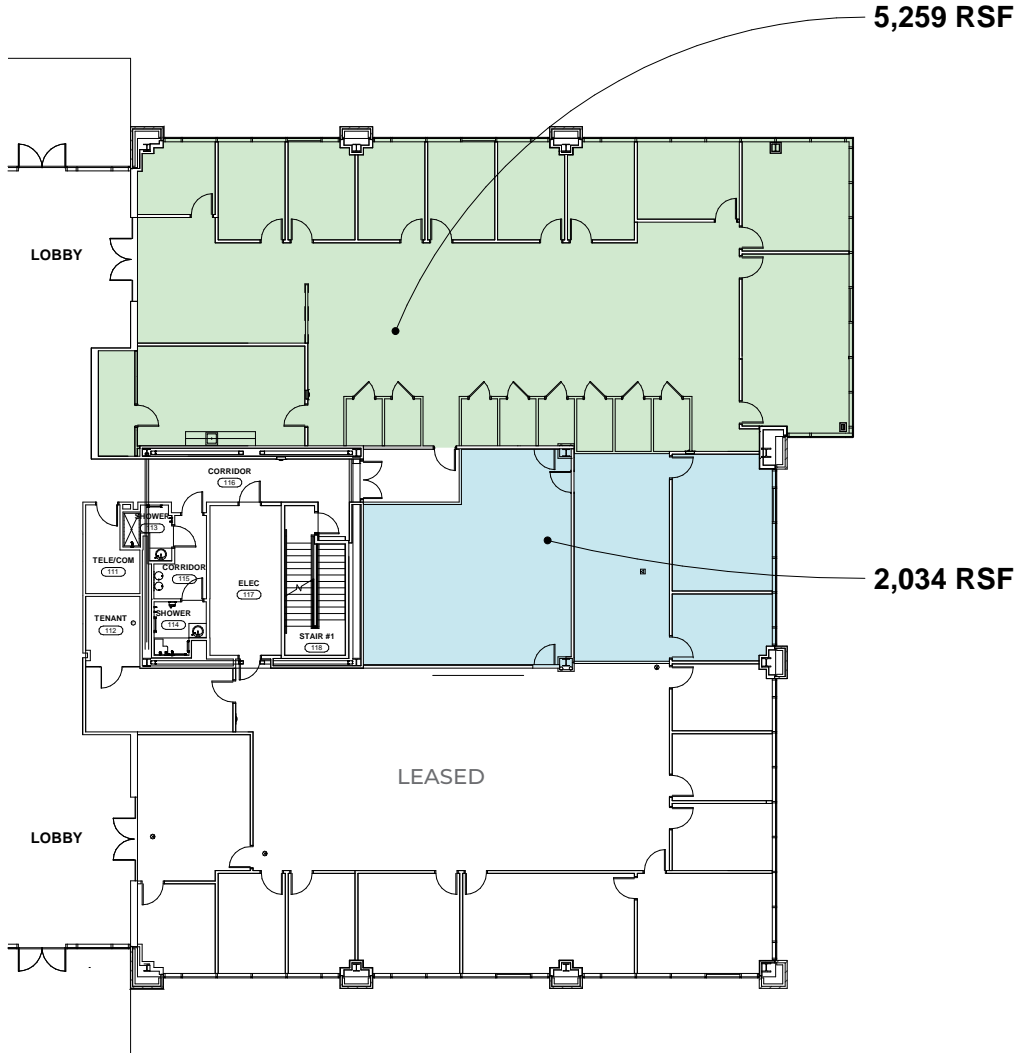


LOCATION AERIAL MAP



1ST FLOOR AVAILABILITIES

2,034 - 7,293 RSF AVAILABLE





For more information, please contact:

NICK TANANA
+1 843 724 0109
nick.tanana@cushwake.com

BRADY DASHIELL
+1 843 724 0106
brady.dashiell@cushwake.com



201
SIGMA

©2023 Cushman & Wakefield. All rights reserved. The information contained in this communication is strictly confidential. This information has been obtained from sources believed to be reliable but has not been verified. NO WARRANTY OR REPRESENTATION, EXPRESS OR IMPLIED, IS MADE AS TO THE CONDITION OF THE PROPERTY (OR PROPERTIES) REFERENCED HEREIN OR AS TO THE ACCURACY OR COMPLETENESS OF THE INFORMATION CONTAINED HEREIN, AND SAME IS SUBMITTED SUBJECT TO ERRORS, OMISSIONS, CHANGE OF PRICE, RENTAL OR OTHER CONDITIONS, WITHDRAWAL WITHOUT NOTICE, AND TO ANY SPECIAL LISTING CONDITIONS IMPOSED BY THE PROPERTY OWNER(S). ANY PROJECTIONS, OPINIONS OR ESTIMATES ARE SUBJECT TO UNCERTAINTY AND DO NOT SIGNIFY CURRENT OR FUTURE PROPERTY PERFORMANCE.