

350 John Muir Parkway, Suite 155  
Brentwood, California



## Premier Class A Medical Office Space For Lease



### PROPERTY FEATURES

- Ground Floor Suite 155 / ±3,454 RSF
- Dual Access: Main Lobby & Direct Private Access to Parking Lot (Parking: 5/1000)
- Spacious Open Office Area with 2 Large Offices, Admin Office or Conference Room, Storage Room, Break Area & Private Restroom
- Extensive Store-front Windows with Natural Light
- Direct Access to Hwy 4 and Balfour Road
- Proximate to Key Local Medical Centers: John Muir Brentwood Medical Center - Adjacent / Kaiser Permanente Antioch - 9 mins Drive / Sutter Delta Medical Center - 15 mins Drive
- Call to Arrange a Tour



**Drew Arvay**  
Cushman & Wakefield  
Managing Director  
+1 408 436 3647  
drew.arvay@cushwake.com  
LIC #00511262

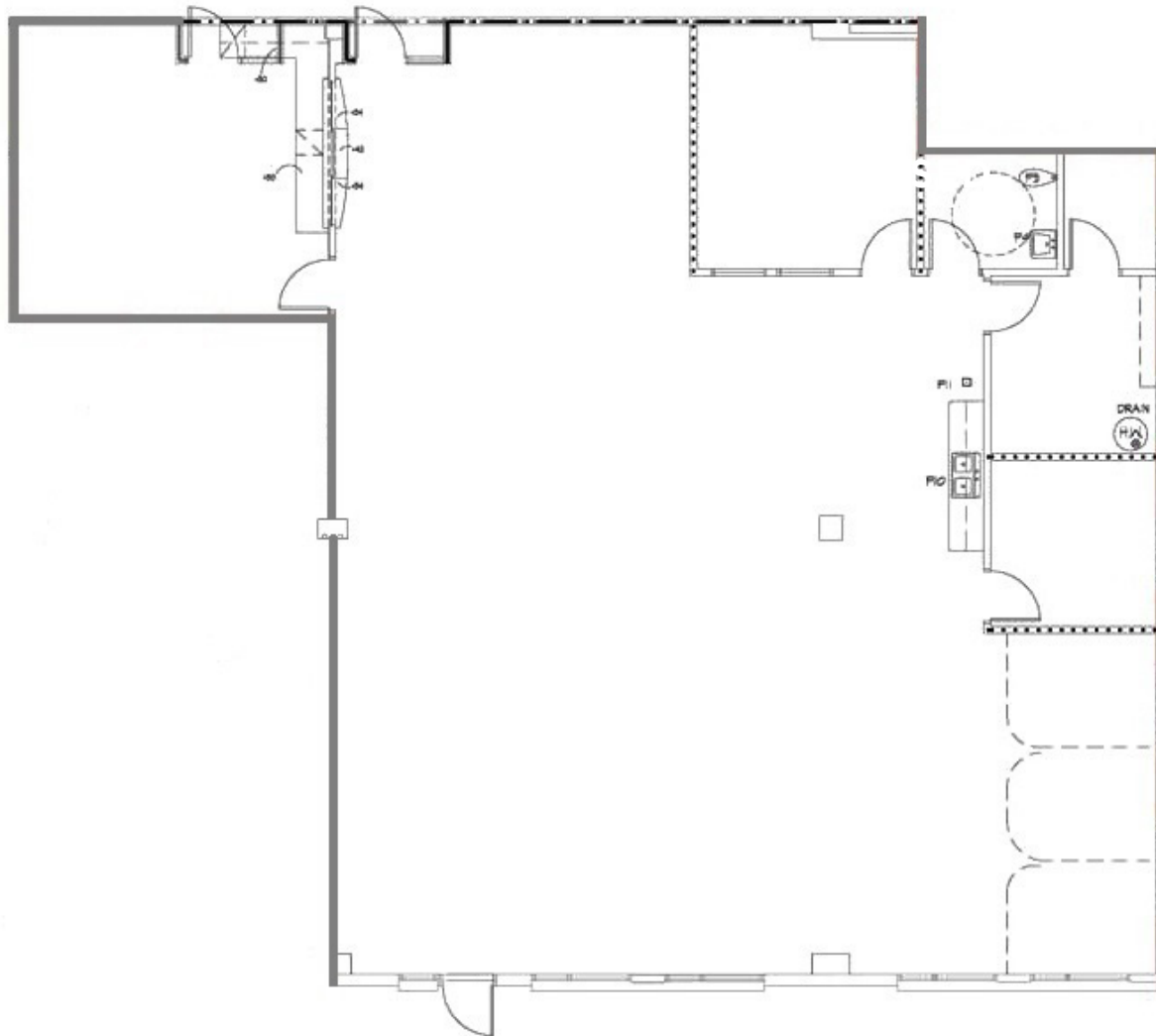
300 Santana Row, Fifth Floor  
San Jose, California  
main +1 408 615 3400  
[cushmanwakefield.com](http://cushmanwakefield.com)

**Aaron Fritz, CCIM**  
Kidder Mathews  
Senior Vice President  
+1 408 588 2398  
aaron.fritz@kidder.com  
LIC #01216555

10 Almaden Blvd, Suite 550  
San Jose, California  
main +1 408 970 9400  
[kidder.com](http://kidder.com)

**FLOOR PLAN**

±3,454 RSF



**Drew Arvay**  
**Cushman & Wakefield**  
Managing Director  
+1 408 436 3647  
drew.arvay@cushwake.com  
LIC #00511262

300 Santana Row, Fifth Floor  
San Jose, California  
main +1 408 615 3400  
**cushmanwakefield.com**

**Aaron Fritz, CCIM**  
**Kidder Mathews**  
Senior Vice President  
+1 408 588 2398  
aaron.fritz@kidder.com  
LIC #01216555

10 Almaden Blvd, Suite 550  
San Jose, California  
main +1 408 970 9400  
**kidder.com**