

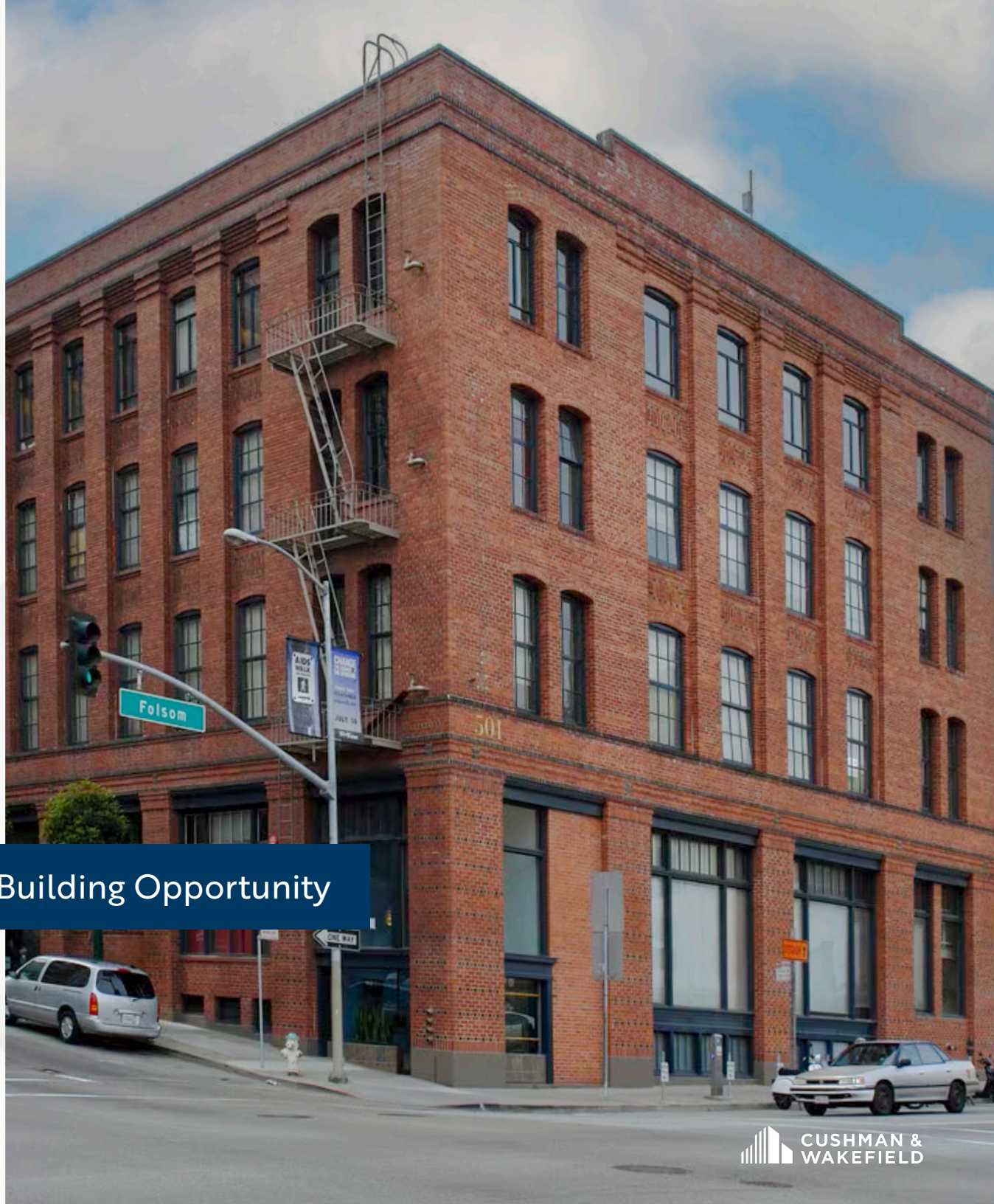
FOR LEASE

501

FOLSOM

AT 1ST STREET

SAN FRANCISCO, CA



Individual Floors or Up to Full Building Opportunity

±7,500 SF Up To ±30,750 SF

# HIGHLIGHTS

- ❖ Creative Brick & Timber Interior
- ❖ High Ceilings / Exposed Beams
- ❖ Hardwood Floors
- ❖ Abundant Natural Light
- ❖ HVAC and Operable Windows
- ❖ Heavy Power - 2000 Amp / 3 Phase
- ❖ Potential for Exterior Signage
- ❖ Close Proximity to MUNI / BART and Salesforce Transbay Terminal and Elevated Park
- ❖ Direct Access to Bay Bridge

4TH FLOOR | ±7,500 SF

3RD FLOOR | ±7,500 SF

2ND FLOOR | ±7,500 SF

1ST FLOOR | ±8,250 SF

FULL BUILDING  
±30,750 SF

FLOORS 1, 2 & 3  
±23,250 SF

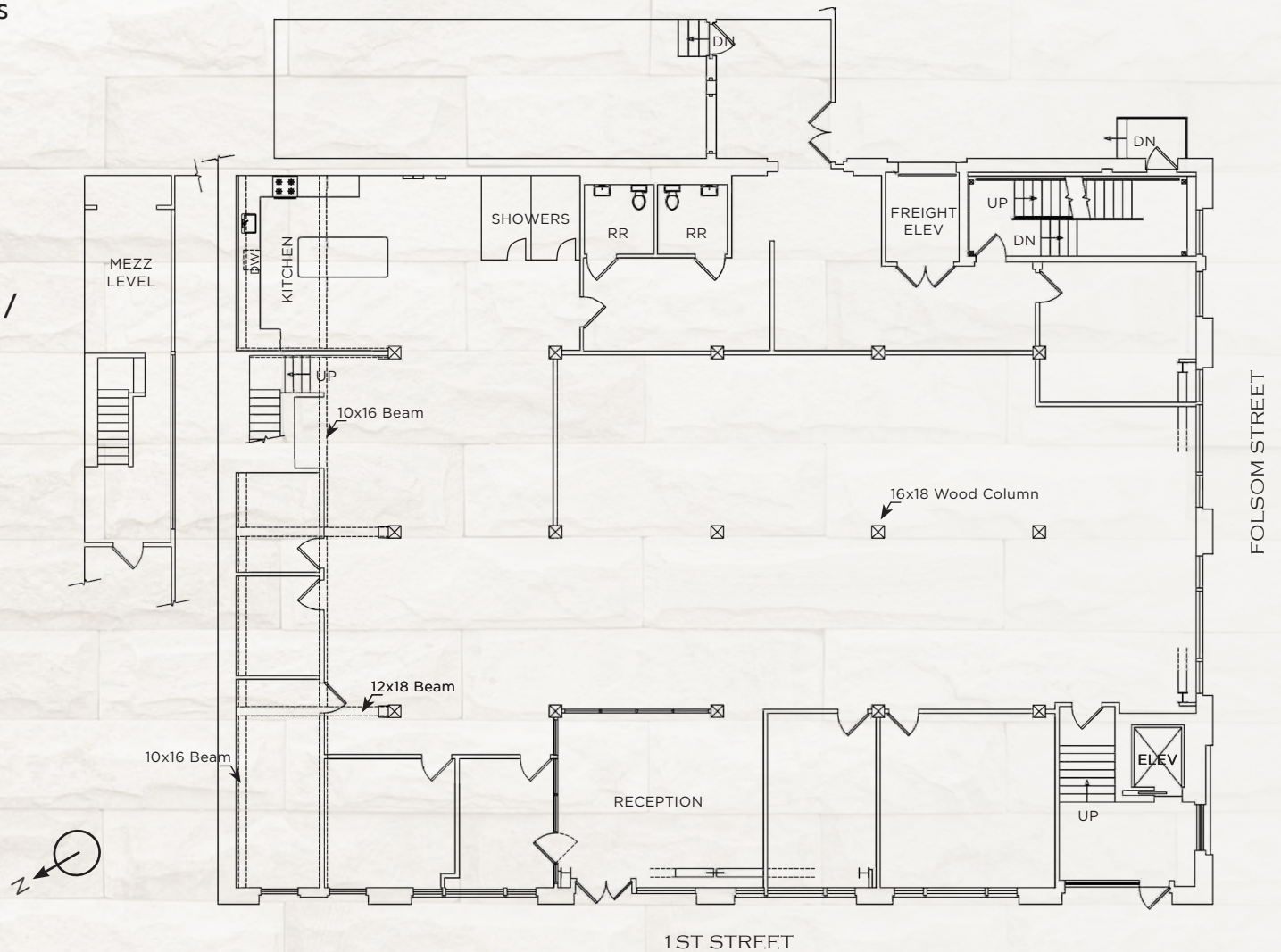
FLOORS 1 & 2  
±15,750 SF

FLOOR 1  
±8,250 SF

FOLSOM

# FIRST FLOOR | ±8,250 RSF

- ❖ Mix of Offices / Meeting Rooms
- ❖ Large Kitchen / Lounge Area
- ❖ Large Conference Room / Board Room
- ❖ Mezzanine IT / Server / Storage Room
- ❖ Dedicated First Floor Entrance / Reception Area
- ❖ Showers on the Floor
- ❖ Freight Elevator
- ❖ Available Now

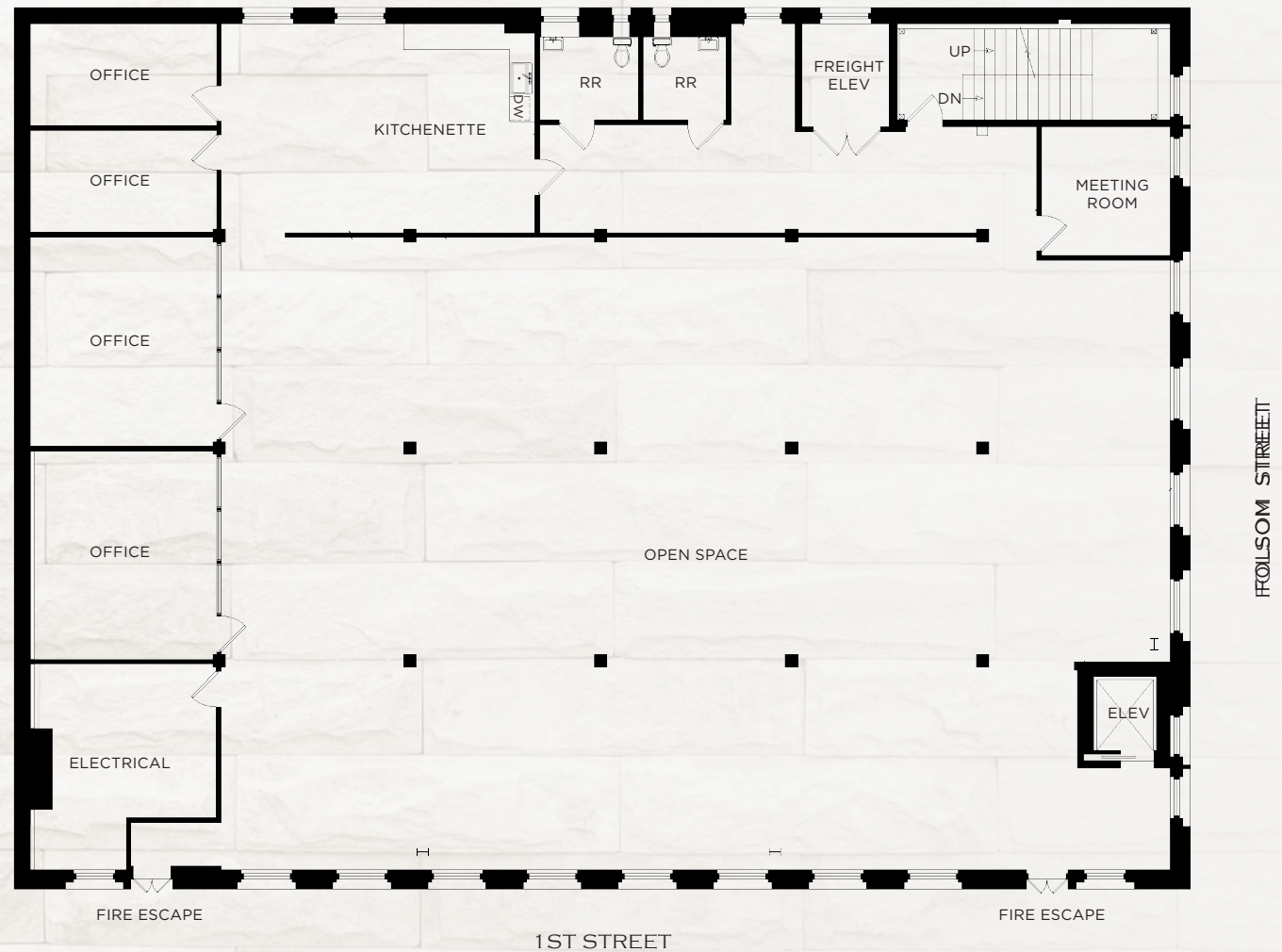


# FIRST FLOOR | INTERIOR

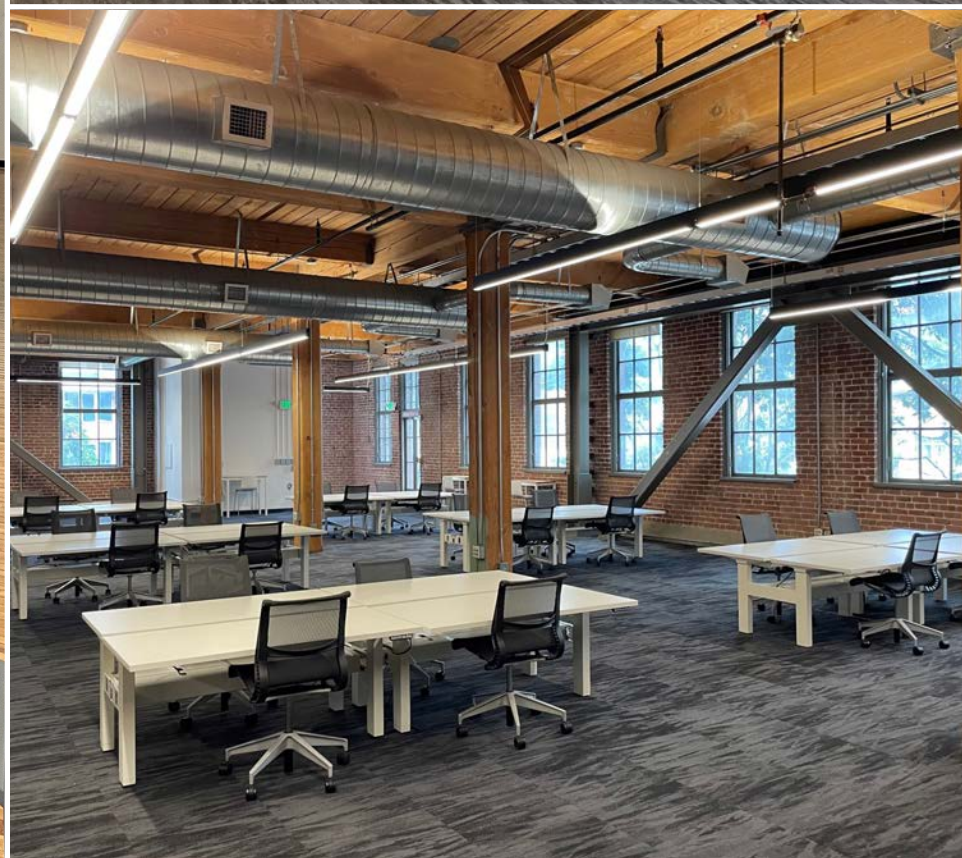


# SECOND FLOOR | ±7,500 RSF

- ❖ Primarily Open Plan with Mix of Office / Meeting Rooms
- ❖ Large Kitchen
- ❖ IT / Server / Storage Room
- ❖ Furnished with 42 Sit / Stand Desks and Chairs
- ❖ Freight Elevator
- ❖ Available Now

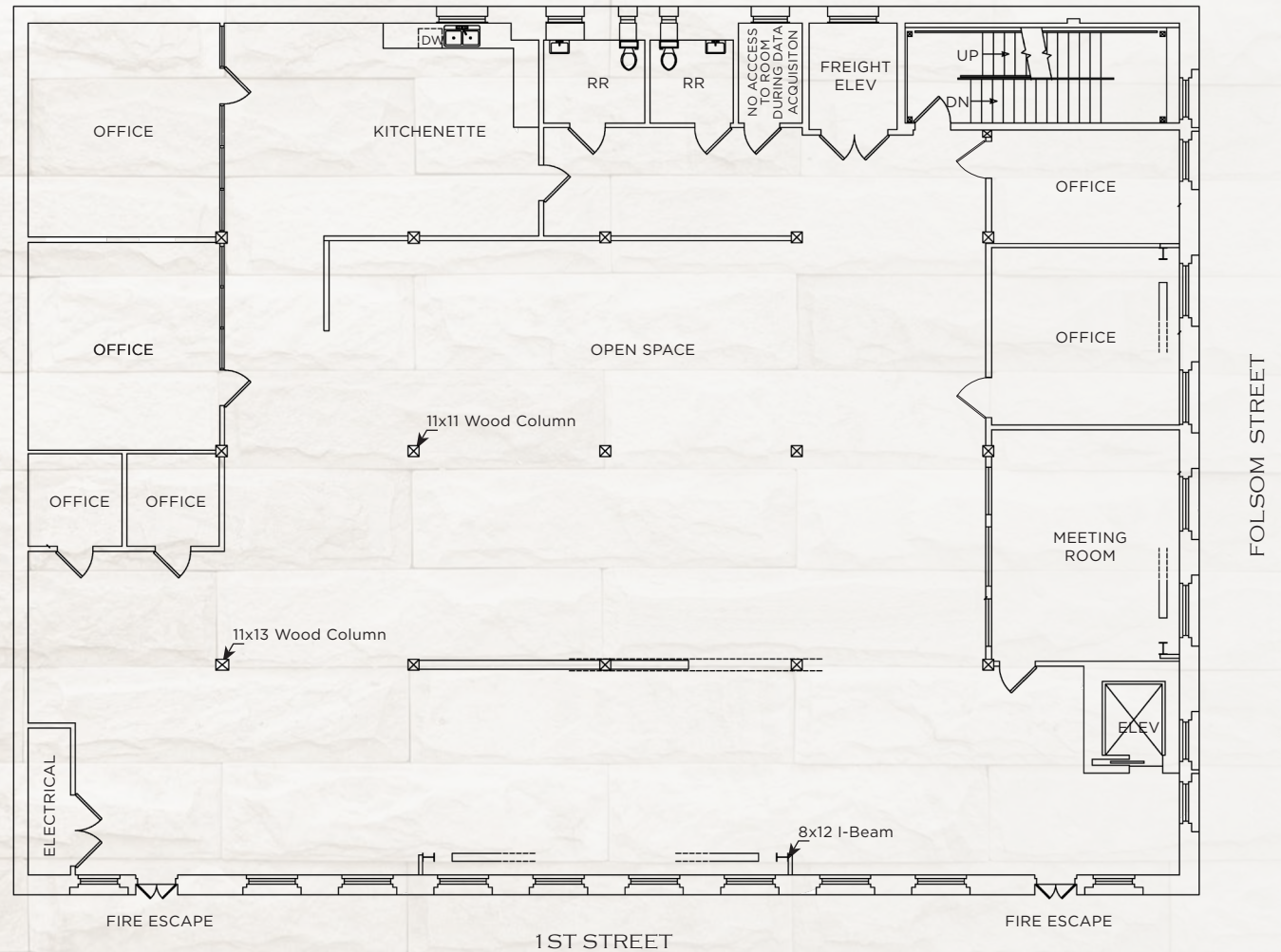


# SECOND FLOOR | INTERIOR

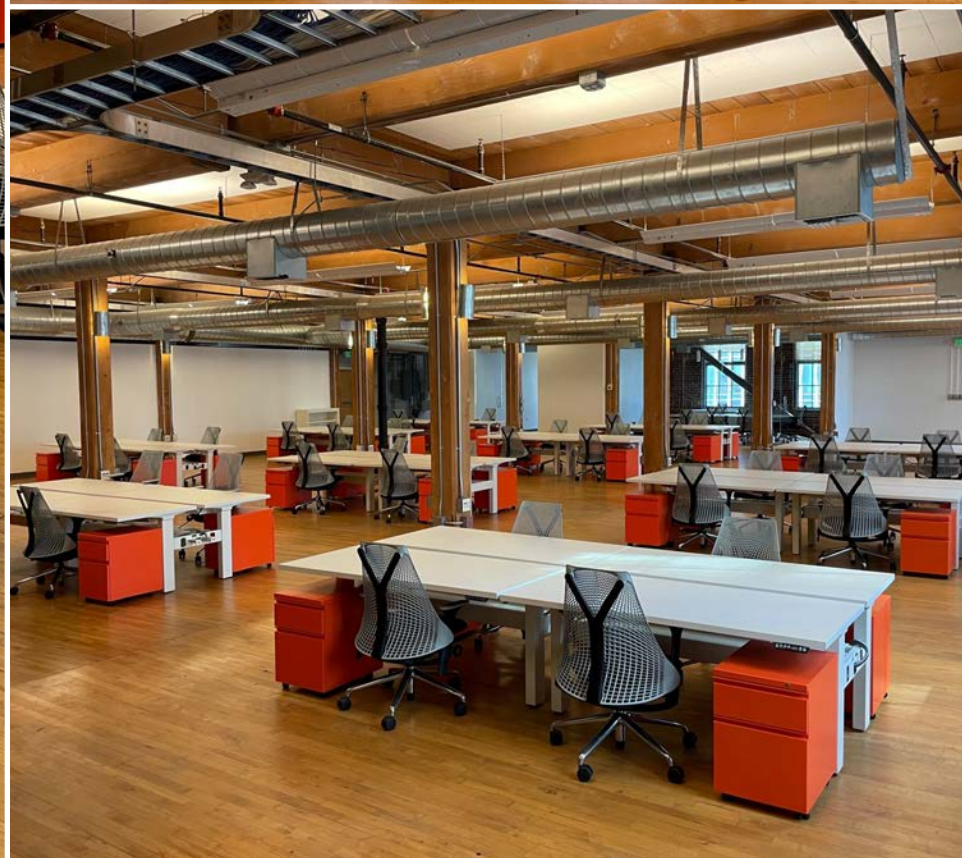


# THIRD FLOOR | ±7,500 RSF

- ❖ Primarily Open Plan with Mix of Office / Meeting Rooms
- ❖ Large Kitchen
- ❖ IT / Server / Storage Room
- ❖ Furnished with 42 Sit / Stand Desks and Chairs
- ❖ Freight Elevator
- ❖ Available Now



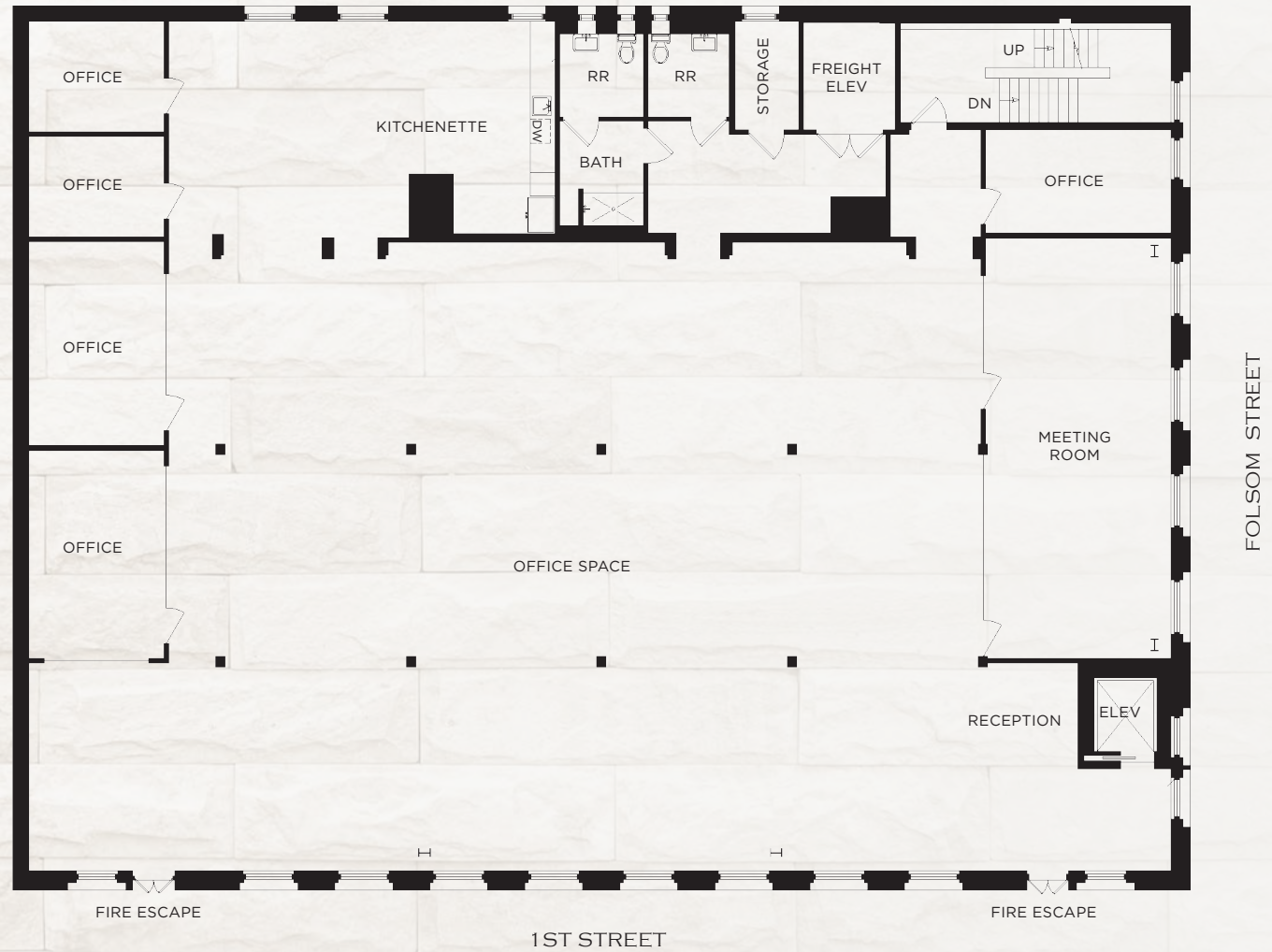
THIRD FLOOR | INTERIOR



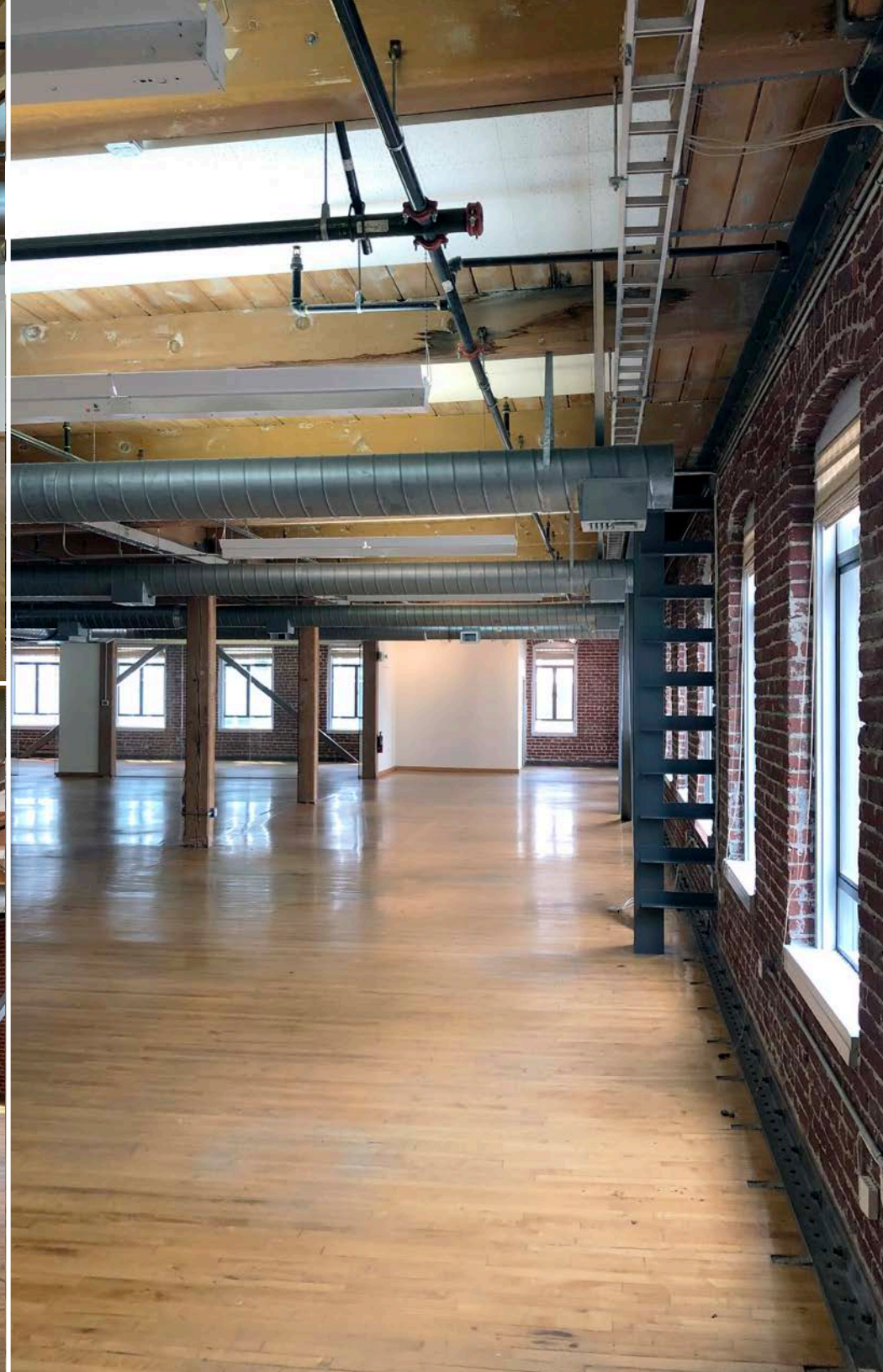


# FOURTH FLOOR | ±7,500 RSF

- ❖ Primarily Open Plan with Mix of Office / Meeting Rooms
- ❖ Large Conference Room / Board Room
- ❖ Kitchenette
- ❖ IT / Server / Storage Room
- ❖ Shower on the Floor
- ❖ Freight Elevator
- ❖ Available Now



FOURTH FLOOR | INTERIOR



# LOCATION MAP



## NEARBY AMENITIES

### RESTAURANTS / BARS / MARKETS

1. Dragon Eats
2. Socola Choclatiers
3. Local Kitchen and Wine Merchant
4. Insomnia Cookies
5. Akikos
6. Woodlands Market
7. Sweetgreen
8. Spice Kit
9. Chipotle

### COFFEE SHOPS

10. Bluestone Lane
11. Starbucks
12. Philz Coffee

### FITNESS

13. Fitness SF
14. Core Power Yoga
15. LuxFit SF



# 501

FOLSOM  
AT 1ST STREET  
SAN FRANCISCO, CA

## **JOHN LEWERENZ**

Managing Director

+1 415 658 3658 direct

+1 415 710 5826 mobile

[john.lewerenz@cushwake.com](mailto:john.lewerenz@cushwake.com)

CA License #01100835

