

FOR LEASE

# 30 NORTH SAN PEDRO ROAD

SAN RAFAEL, CA



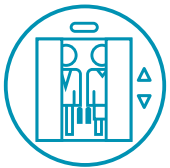
Whitney Strotz  
Executive Managing Director  
+1 415 451 2406  
whitney.strotz@cushwake.com  
Lic #: 01351397

Drew Soltis  
Associate  
+1 415 451 2415  
drew.soltis@cushwake.com  
Lic #: 02163430

900 Larkspur Landing Circle  
Suite 295  
Larkspur, CA, 94939



# Highlights



Elevator Served

Across from  
Marin Civic  
Center

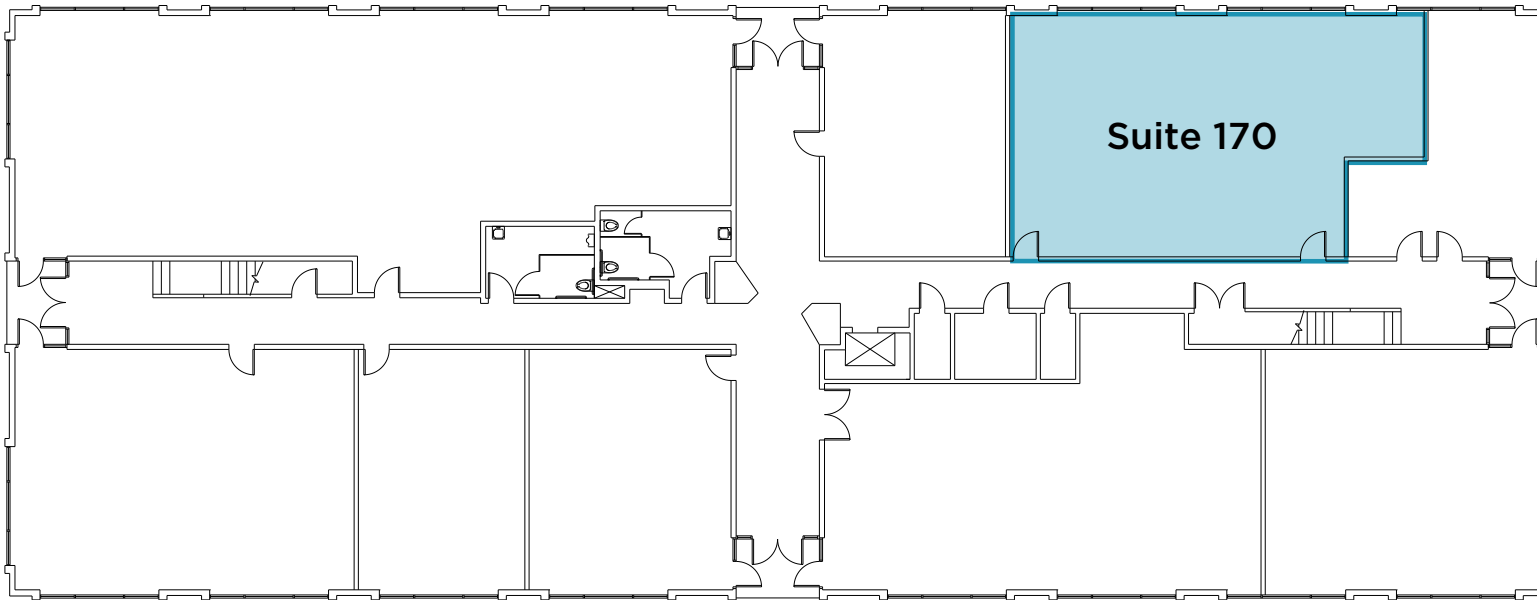
Conference  
Room

On Site  
Parking

31 mi to SFO,  
34 mi to OAK

Easy Access to  
Highway 101

## 1st Floor

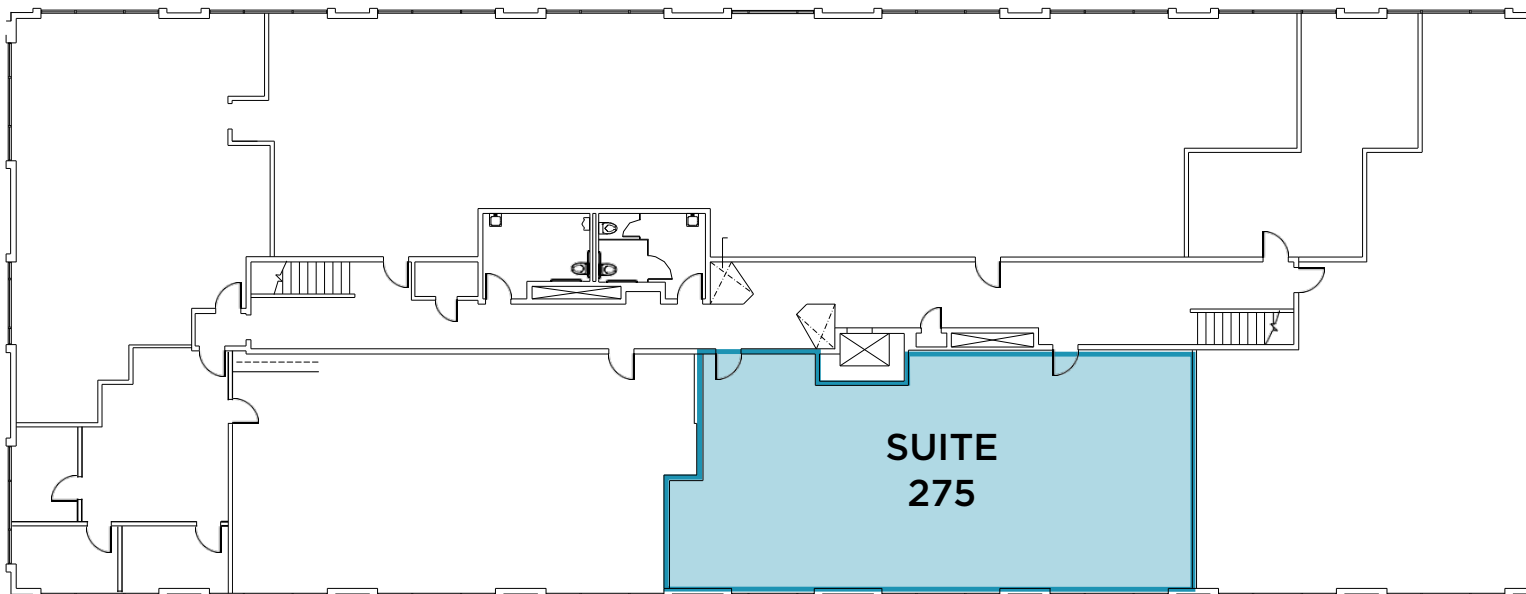


### Suite 170



- 1,659 SF
- \$2.65 Full Service
- 2 Private Offices
- Open Floor Plan
- Floor to Ceiling Windows
- Spec Suite

## 2nd Floor

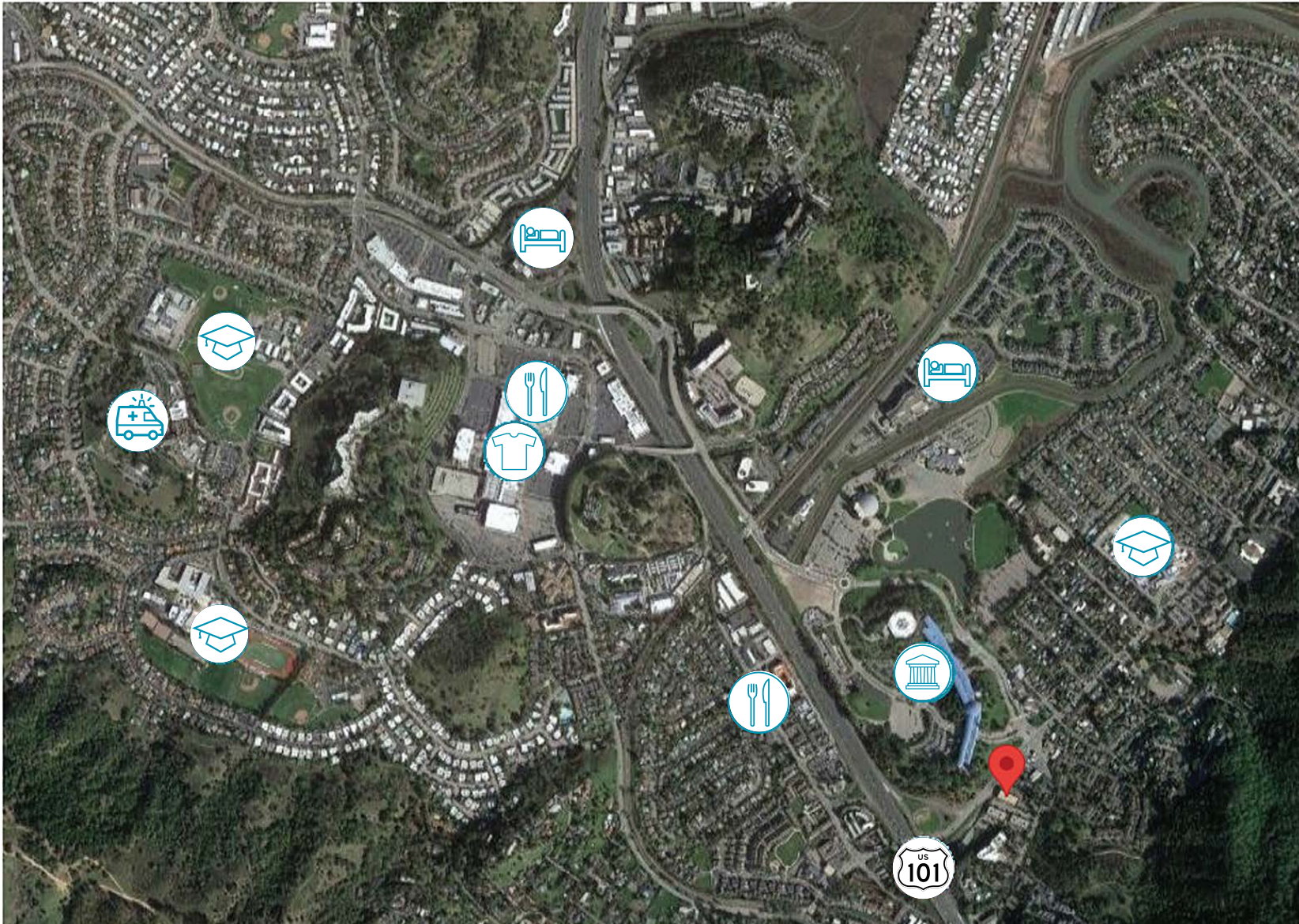


### Suite 275

2,079 SF

- \$2.65 Full Service
- 4 Private Offices
- In suite kitchenette

# MAP



Hotel



Restaurants



Hospital



School



Northgate  
Mall



Civic  
Center



Highway  
101



30 N San Pedro

FOR LEASE

30 NORTH SAN PEDRO ROAD

SAN RAFAEL, CA



30N  
SAN PEDRO RD

SAN PEDRO  
Business Center  
LOBBY

Whitney Strotz  
Executive Managing Director  
+1 415 451 2406  
whitney.strotz@cushwake.com  
Lic #: 01351397

Drew Soltis  
Associate  
+1 415 451 2415  
drew.soltis@cushwake.com  
Lic #: 02163430

900 Larkspur Landing Circle  
Suite 295  
Larkspur, CA, 94939

