

200, 250 & 300 HOLGER WAY, SAN JOSE, CA
CORPORATE TECHNOLOGY CENTRE



FOR SUBLEASE | LONG TERM DIRECT LEASE POSSIBLE

FOR MORE INFORMATION PLEASE CONTACT:

DOUG SUGIMOTO

Lic. #00822925

(408) 572-4174

doug.sugimoto@cushwake.com

SCOTT DEVER

Lic.#01890552

(408) 615-3457

scott.dever@cushwake.com



200, 250 & 300 HOLGER WAY, SAN JOSE, CA

CORPORATE TECHNOLOGY CENTRE

PROPERTY HIGHLIGHTS



- Full Building Available Now - 96,640 SF
- Divisible to 60,000 SF on two floors
- Expansion up to 272,920 SF in three buildings or 319,593 SF long term campus opportunity
- Flexible and efficient floor plates
- Excellent Hwy 237 signage exposure
- 3.75/1,000 SF parking ratio
- On-site cafe, meeting rooms, and fitness center
- Adjacent to @First retail, hotel, and restaurants
- Extended lease term or direct deal available
- Sublease expiration date: October 31, 2018



FOR MORE INFORMATION PLEASE CONTACT:

DOUG SUGIMOTO

Lic. #00822925
(408) 572-4174
doug.sugimoto@cushwake.com

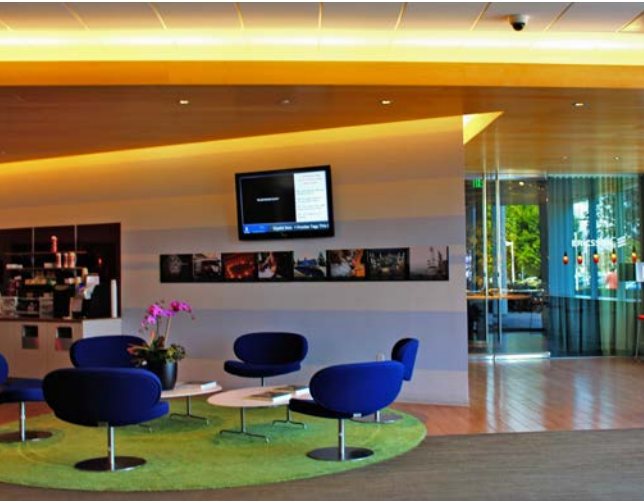
SCOTT DEVER

Lic.#01890552
(408) 615-3457
scott.dever@cushwake.com



200, 250 & 300 HOLGER WAY, SAN JOSE, CA

CORPORATE TECHNOLOGY CENTRE



FOR MORE INFORMATION PLEASE CONTACT:

DOUG SUGIMOTO

Lic. #00822925
(408) 572-4174
doug.sugimoto@cushwake.com

SCOTT DEVER

Lic.#01890552
(408) 615-3457
scott.dever@cushwake.com



200, 250 & 300 HOLGER WAY, SAN JOSE, CA

CORPORATE TECHNOLOGY CENTRE



AMENITIES MAP

FOR MORE INFORMATION PLEASE CONTACT:

DOUG SUGIMOTO

Lic. #00822925
(408) 572-4174
doug.sugimoto@cushwake.com

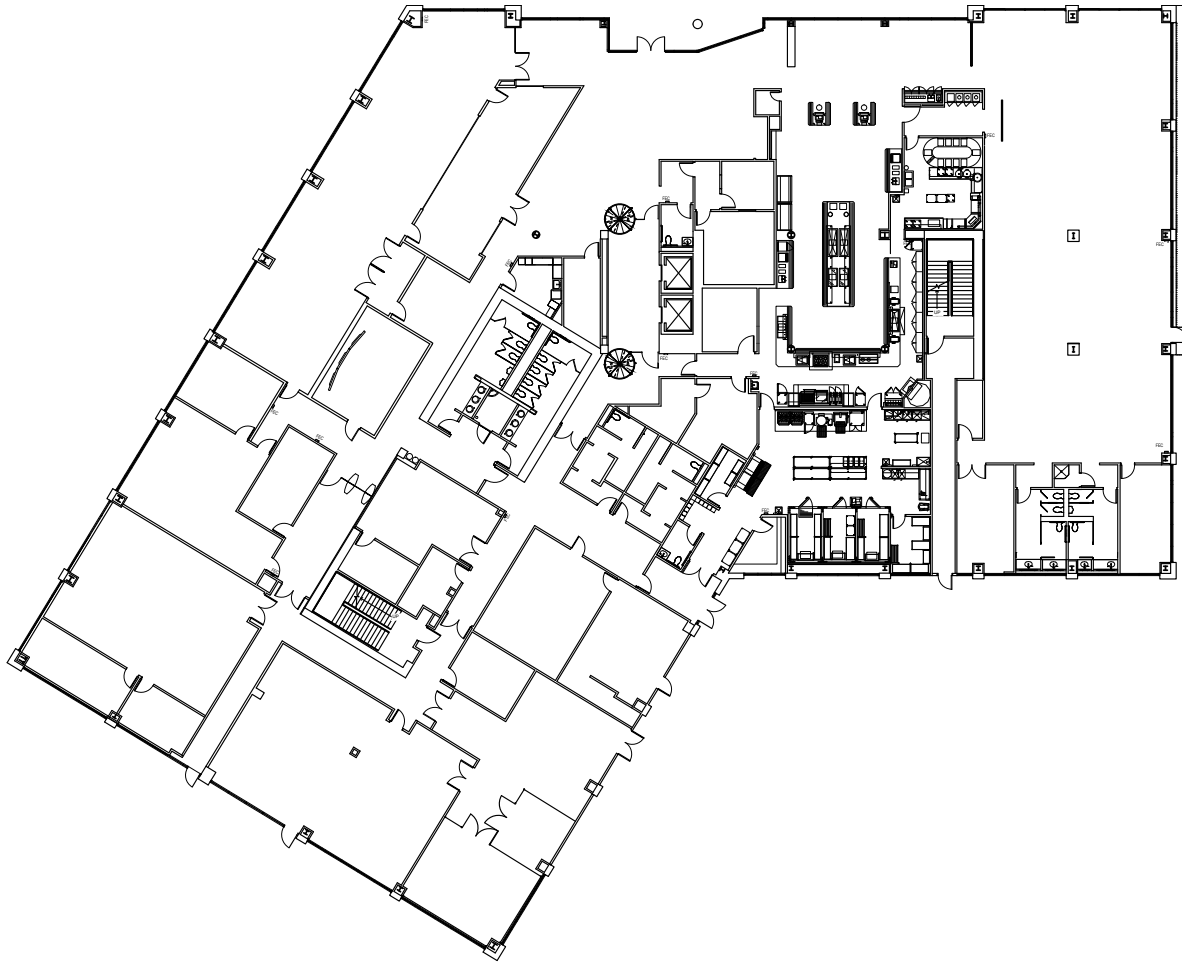
SCOTT DEVER

Lic.#01890552
(408) 615-3457
scott.dever@cushwake.com



200, 250 & 300 HOLGER WAY, SAN JOSE, CA

CORPORATE TECHNOLOGY CENTRE



200 HOLGER WAY
FIRST FLOOR

FOR MORE INFORMATION PLEASE CONTACT:

DOUG SUGIMOTO

Lic. #00822925

(408) 572-4174

doug.sugimoto@cushwake.com

SCOTT DEVER

Lic.#01890552

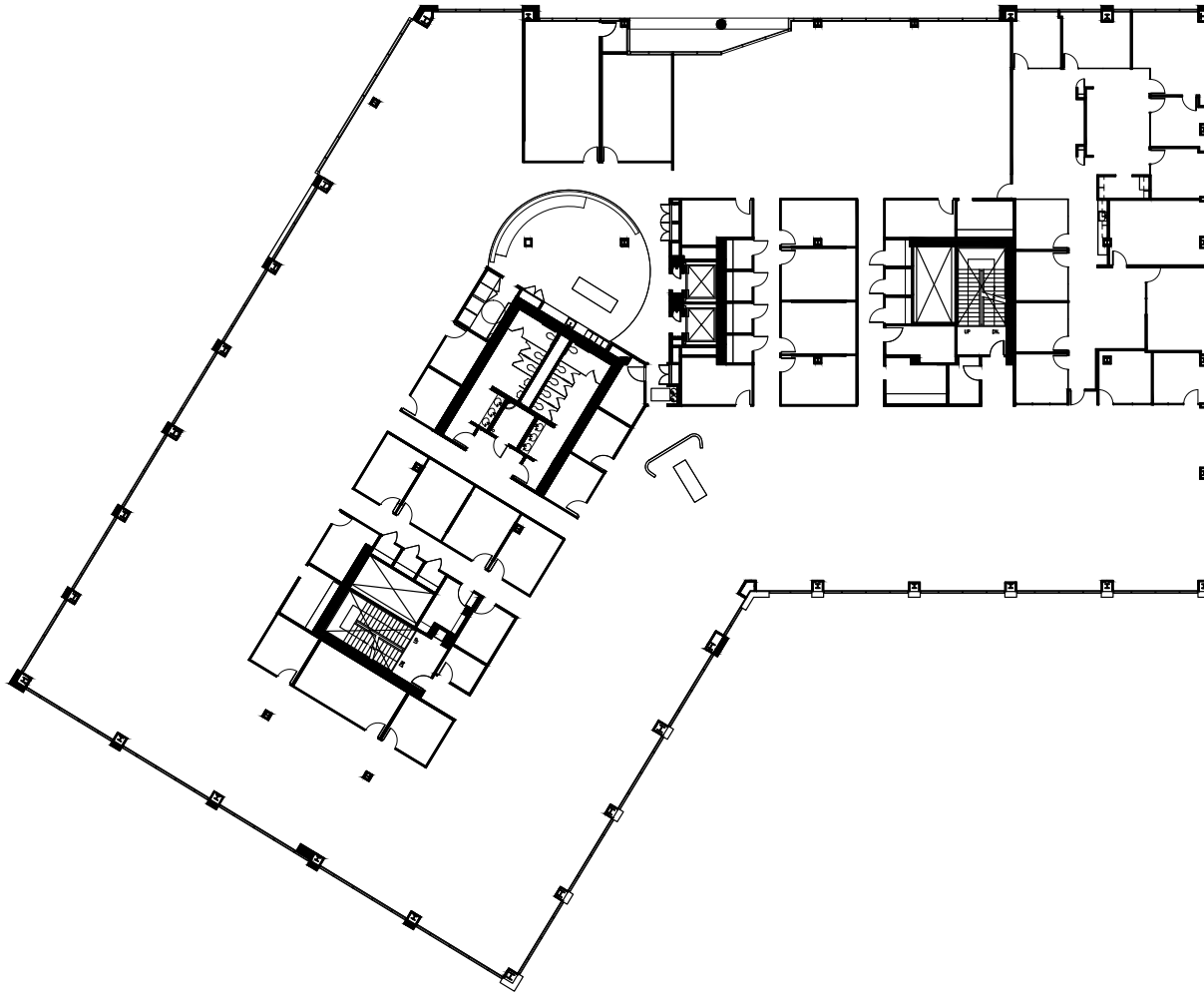
(408) 615-3457

scott.dever@cushwake.com



200, 250 & 300 HOLGER WAY, SAN JOSE, CA

CORPORATE TECHNOLOGY CENTRE



200 HOLGER WAY
SECOND FLOOR

FOR MORE INFORMATION PLEASE CONTACT:

DOUG SUGIMOTO

Lic. #00822925

(408) 572-4174

doug.sugimoto@cushwake.com

SCOTT DEVER

Lic.#01890552

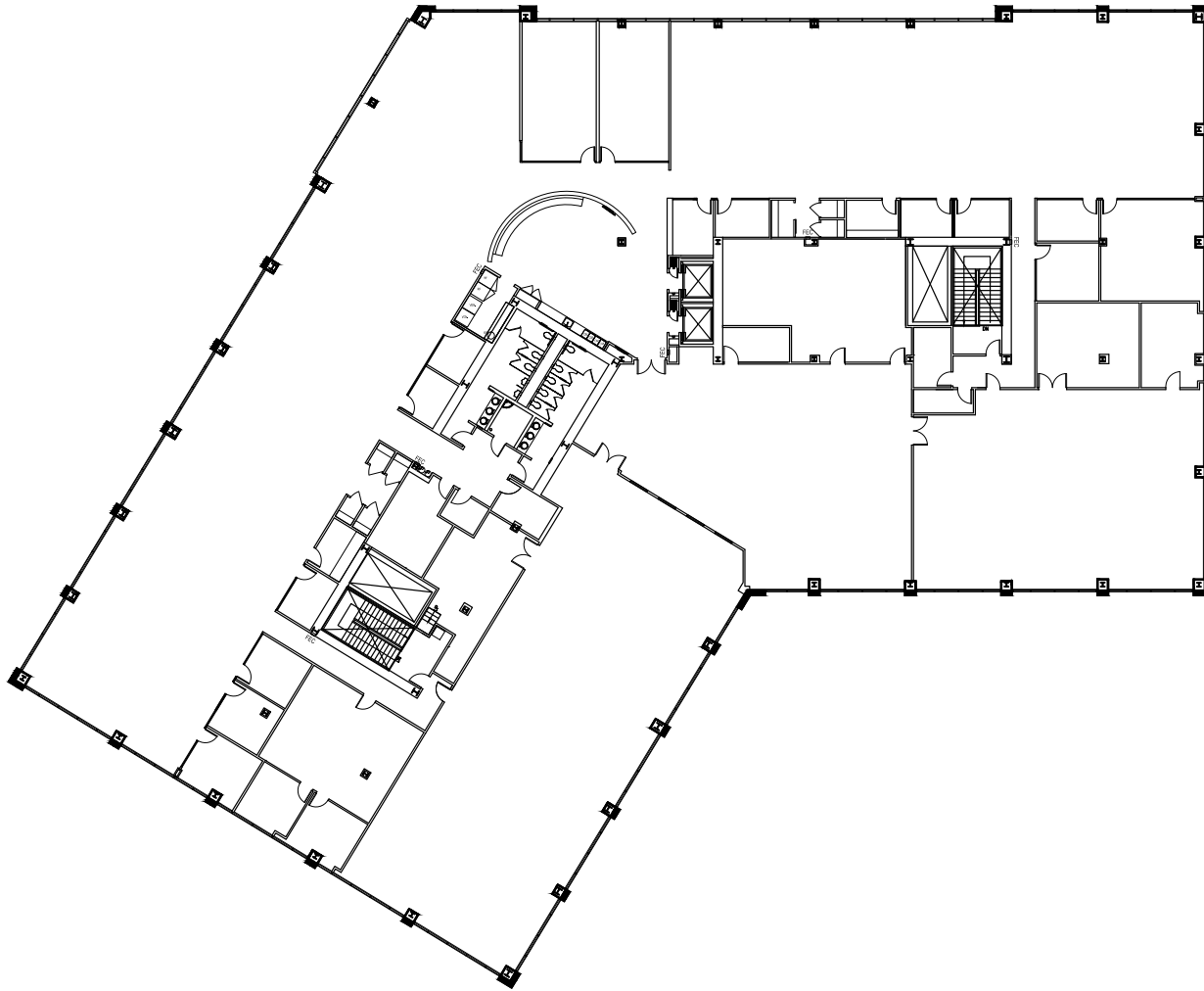
(408) 615-3457

scott.dever@cushwake.com



200, 250 & 300 HOLGER WAY, SAN JOSE, CA

CORPORATE TECHNOLOGY CENTRE



200 HOLGER WAY
THIRD FLOOR

FOR MORE INFORMATION PLEASE CONTACT:

DOUG SUGIMOTO

Lic. #00822925

(408) 572-4174

doug.sugimoto@cushwake.com

SCOTT DEVER

Lic.#01890552

(408) 615-3457

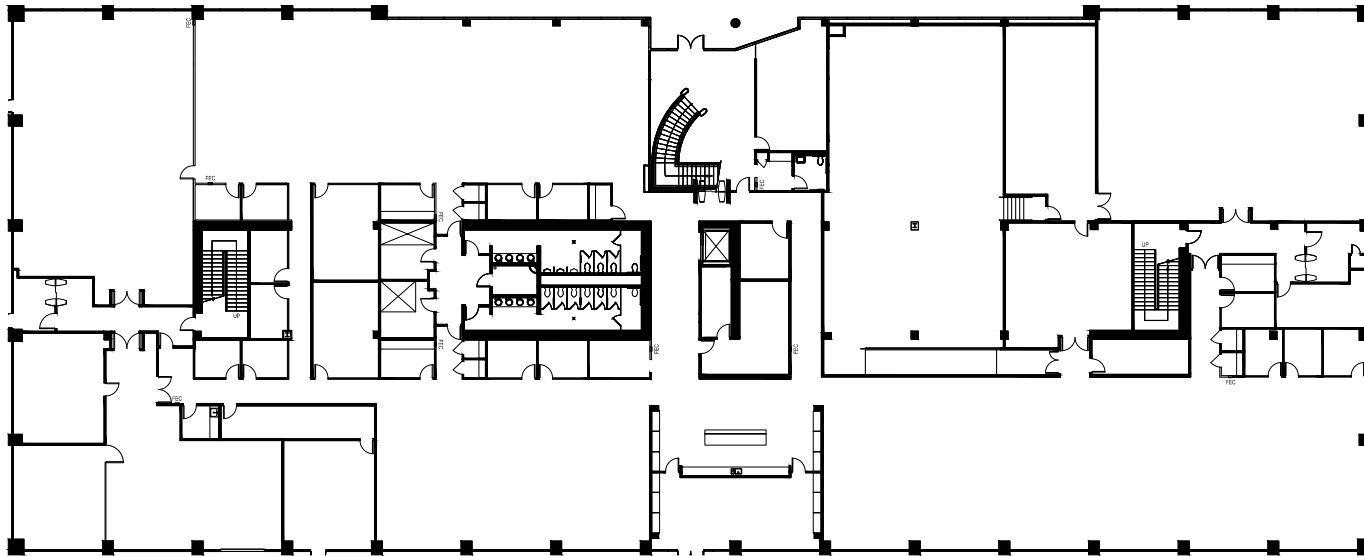
scott.dever@cushwake.com



200, 250 & 300 HOLGER WAY, SAN JOSE, CA

CORPORATE TECHNOLOGY CENTRE

250 HOLGER WAY
FIRST FLOOR



FOR MORE INFORMATION PLEASE CONTACT:

DOUG SUGIMOTO

Lic. #00822925

(408) 572-4174

doug.sugimoto@cushwake.com

SCOTT DEVER

Lic.#01890552

(408) 615-3457

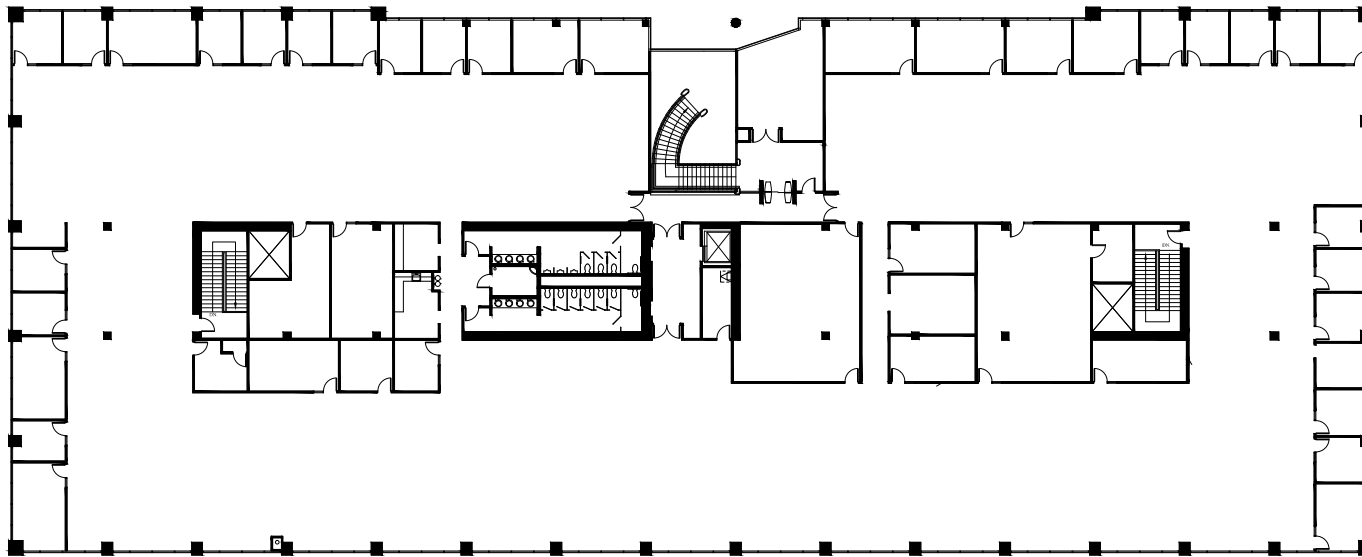
scott.dever@cushwake.com



200, 250 & 300 HOLGER WAY, SAN JOSE, CA

CORPORATE TECHNOLOGY CENTRE

250 HOLGER WAY
SECOND FLOOR



FOR MORE INFORMATION PLEASE CONTACT:

DOUG SUGIMOTO

Lic. #00822925

(408) 572-4174

doug.sugimoto@cushwake.com

SCOTT DEVER

Lic.#01890552

(408) 615-3457

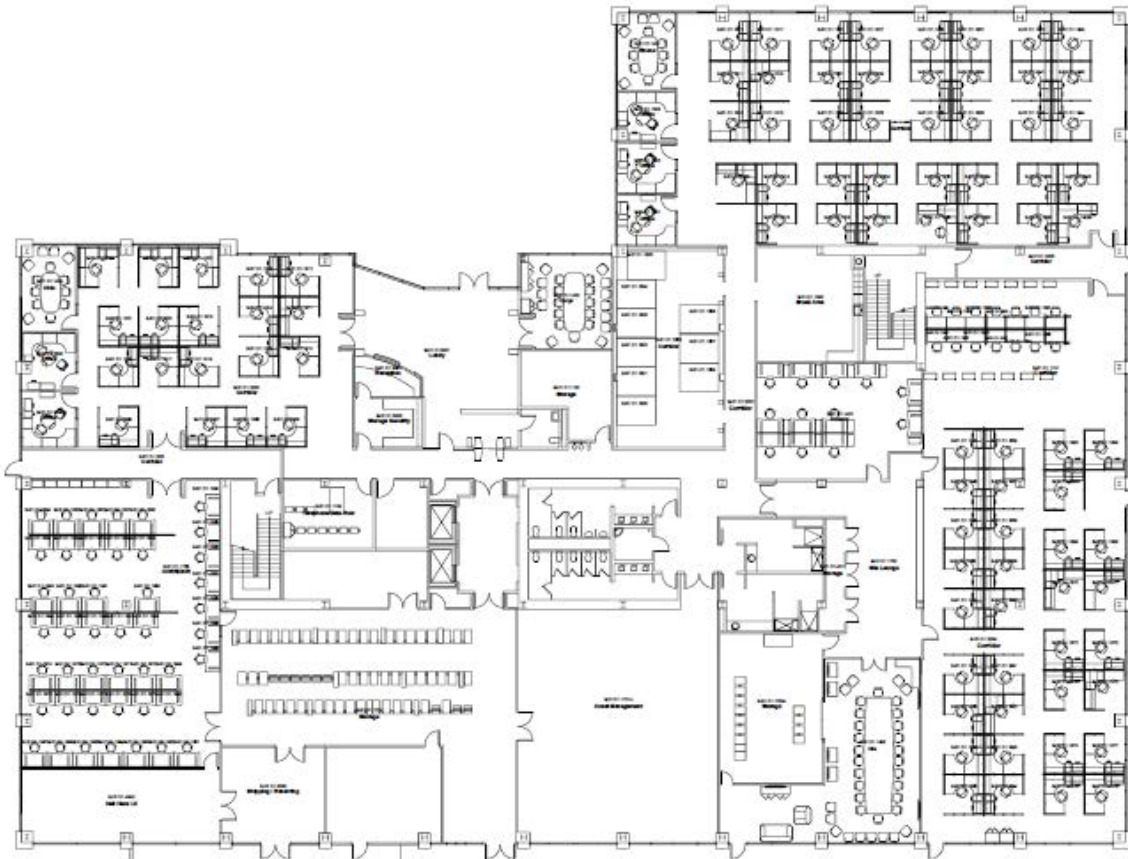
scott.dever@cushwake.com



200, 250 & 300 HOLGER WAY, SAN JOSE, CA

CORPORATE TECHNOLOGY CENTRE

300 HOLGER WAY
FIRST FLOOR



FOR MORE INFORMATION PLEASE CONTACT:

DOUG SUGIMOTO

Lic. #00822925

(408) 572-4174

doug.sugimoto@cushwake.com

SCOTT DEVER

Lic.#01890552

(408) 615-3457

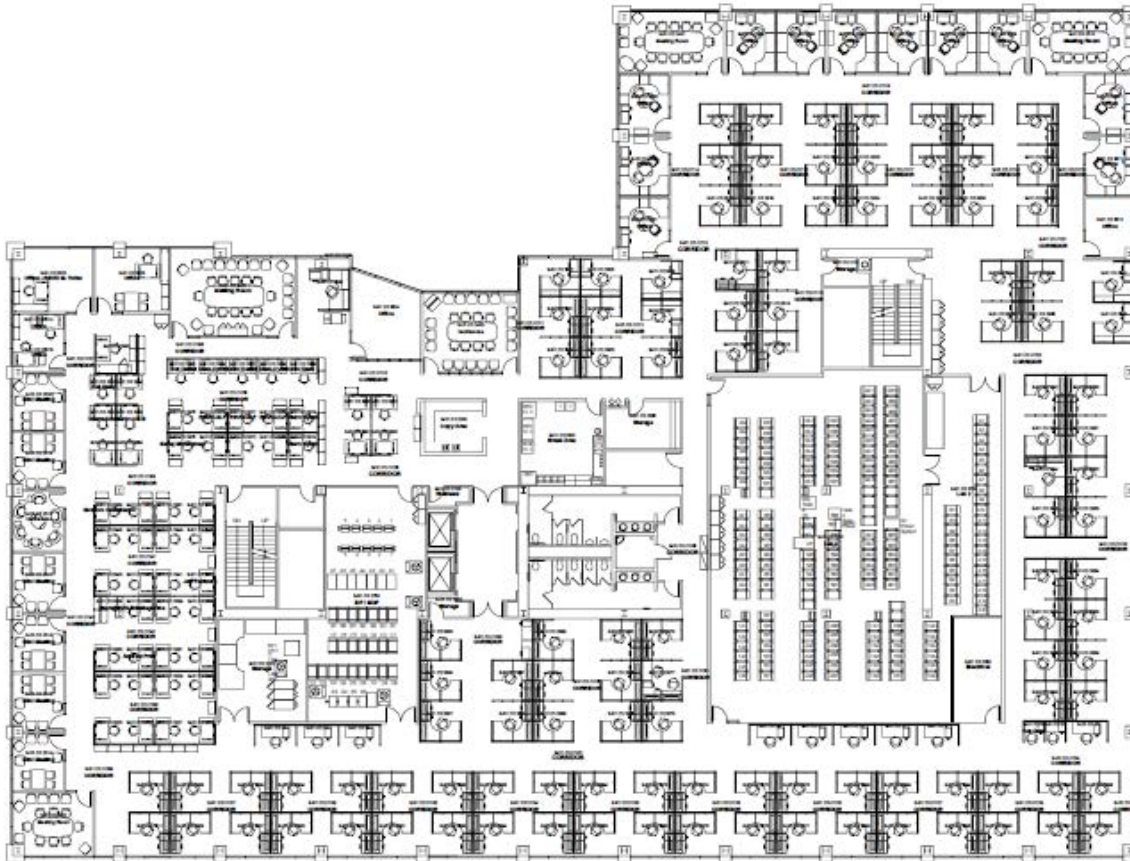
scott.dever@cushwake.com



200, 250 & 300 HOLGER WAY, SAN JOSE, CA

CORPORATE TECHNOLOGY CENTRE

300 HOLGER WAY
SECOND FLOOR



FOR MORE INFORMATION PLEASE CONTACT:

DOUG SUGIMOTO

Lic. #00822925

(408) 572-4174

doug.sugimoto@cushwake.com

SCOTT DEVER

Lic.#01890552

(408) 615-3457

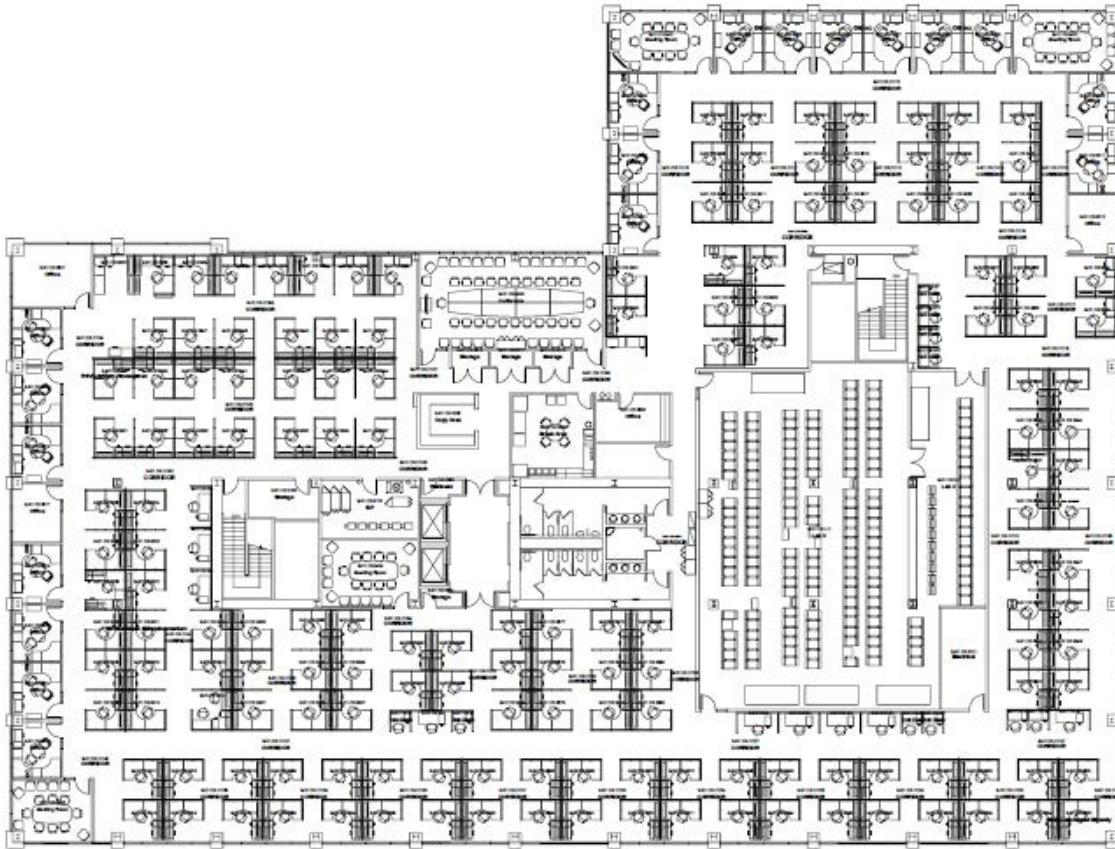
scott.dever@cushwake.com



200, 250 & 300 HOLGER WAY, SAN JOSE, CA

CORPORATE TECHNOLOGY CENTRE

300 HOLGER WAY
THIRD FLOOR



FOR MORE INFORMATION PLEASE CONTACT:

DOUG SUGIMOTO

Lic. #00822925

(408) 572-4174

doug.sugimoto@cushwake.com

SCOTT DEVER

Lic.#01890552

(408) 615-3457

scott.dever@cushwake.com





ERICSSON

CONTACTS

DOUG SUGIMOTO

Lic. #00822925

(408) 572-4174

doug.sugimoto@cushwake.com

SCOTT DEVER

Lic.#01890552

(408) 615 3457

scott.dever@cushwake.com

