



FOR SUBLEASE



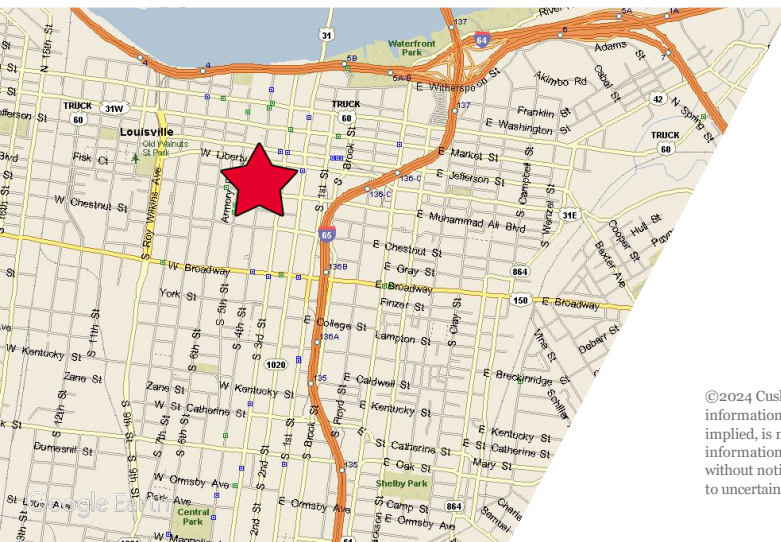
**462 S. 4TH
STREET,
SUITE 1200**

Louisville, KY 40202

3,930 SF AVAILABLE

PROPERTY HIGHLIGHTS

- 12th floor space available at Class A Meidinger Tower
- Building amenities include fitness center, conference center, on-site building maintenance
- Adjacent to 4th Street Live with numerous restaurant and entertainment options
- Sublease through December 31, 2025



E.P. SCHERER

Senior Director

+1 502 589 5150 ext. 234

epscherer@commercialkentucky.com

333 E Main Street, Suite 510

Louisville, KY 40202

Main +1 502 589 5150

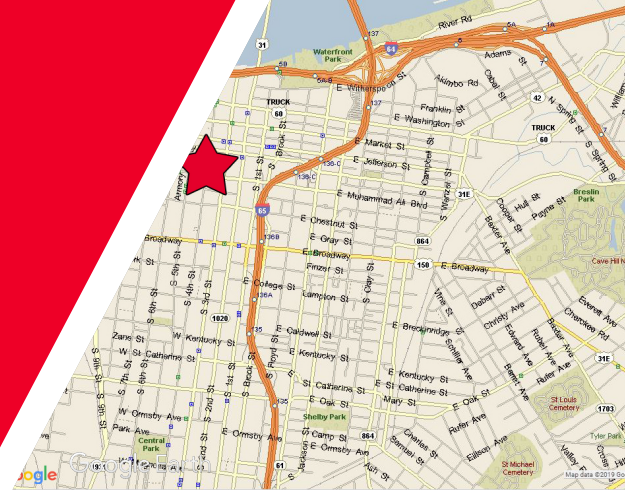
www.Commercialkentucky.com

©2024 Cushman & Wakefield. All rights reserved. The information contained in this communication is strictly confidential. This information has been obtained from sources believed to be reliable but has not been verified. No warranty or representation, express or implied, is made as to the condition of the property (or properties) referenced herein or as to the accuracy or completeness of the information contained herein, and same is submitted subject to errors, omissions, change of price, rental or other conditions, withdrawal without notice, and to any special listing conditions imposed by the property owner(s). Any projections, opinions or estimates are subject to uncertainty and do not signify current or future property performance.

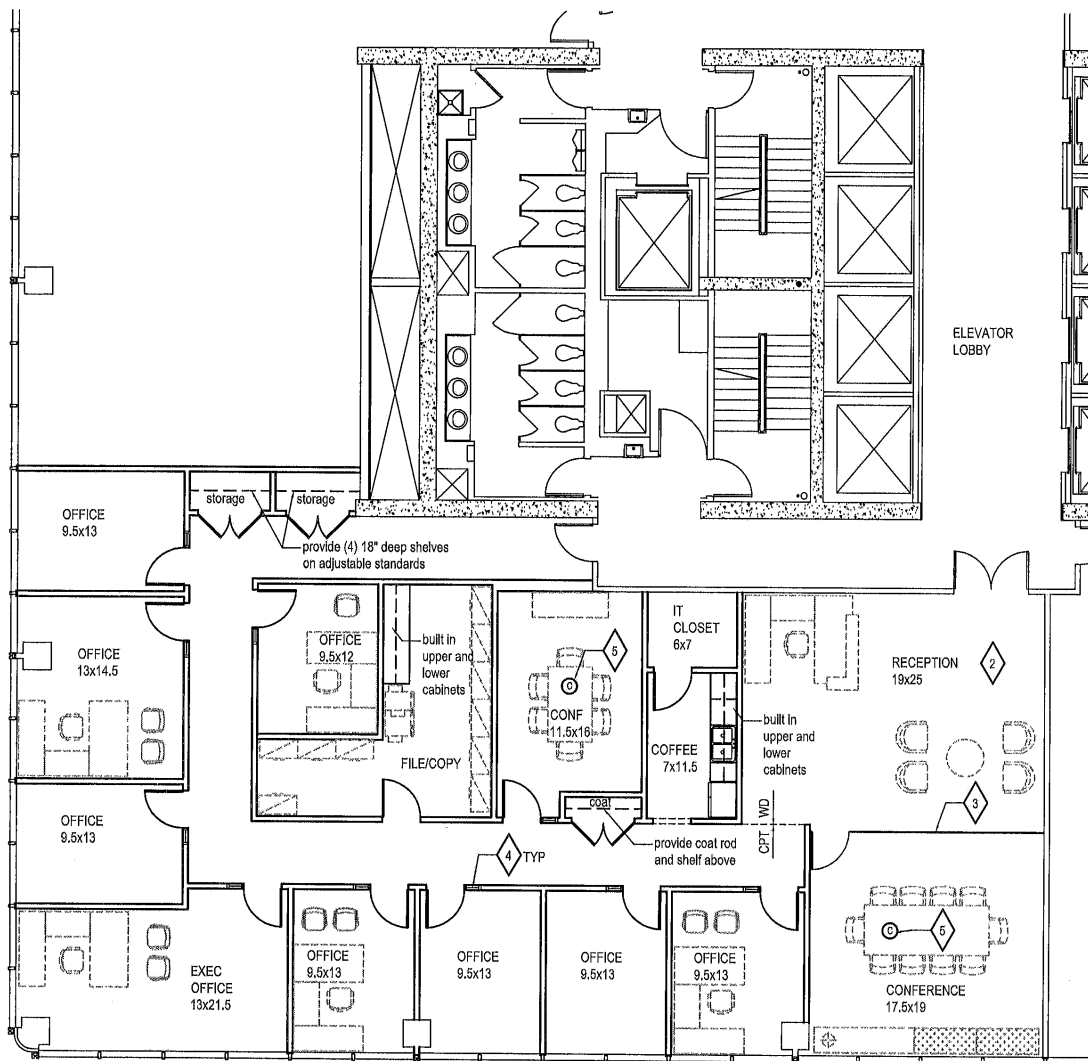
462 S. 4th STREET, SUITE 1200

Louisville, KY 40202

3,930 SF AVAILABLE



FLOOR PLAN



E.P. SCHERER

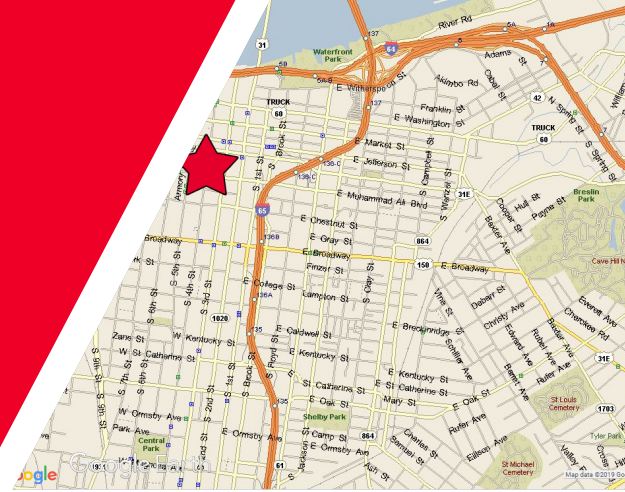
Senior Director
+1 502 589 5150 ext. 234
epscherer@commercialkentucky.com

333 E Main Street, Suite 510
Louisville, KY 40202
Main +1 502 589 5150
www.Commercialkentucky.com

462 S. 4th STREET, SUITE 1200

Louisville, KY 40202

3,930 SF AVAILABLE



PROPERTY PHOTOS



E.P. SCHERER

Senior Director

+1 502 589 5150 ext. 234

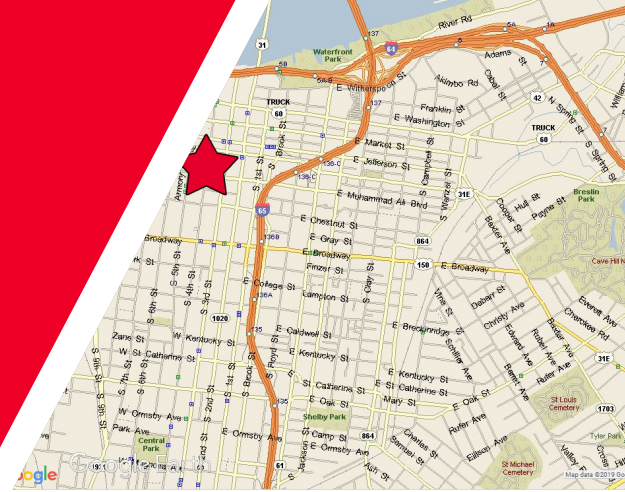
epscherer@commercialkentucky.com

333 E Main Street, Suite 510
Louisville, KY 40202
Main +1 502 589 5150
www.Commercialkentucky.com

462 S. 4th STREET, SUITE 1200

Louisville, KY 40202

3,930 SF AVAILABLE



PROPERTY PHOTOS



E.P. SCHERER

Senior Director

+1 502 589 5150 ext. 234

epscherer@commercialkentucky.com

333 E Main Street, Suite 510

Louisville, KY 40202

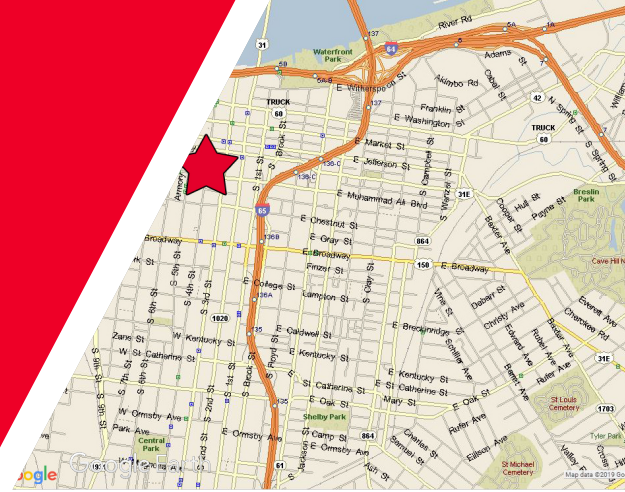
Main +1 502 589 5150

www.Commercialkentucky.com

462 S. 4th STREET, SUITE 1200

Louisville, KY 40202

3,930 SF AVAILABLE



PROPERTY PHOTOS



E.P. SCHERER

Senior Director

+1 502 589 5150 ext. 234

epscherer@commercialkentucky.com

333 E Main Street, Suite 510

Louisville, KY 40202

Main +1 502 589 5150

www.Commercialkentucky.com