

# 866 MALCOLM ROAD

SUITE 110 | BURLINGAME, CA

±10,834 RSF | LIFE SCIENCE  
LAB SUBLEASE AVAILABLE



**Nate Currie**  
+1 650 804 9103  
nate.currie@cushwake.com  
LIC #01418567



# 866 MALCOLM ROAD

SUITE 110 | BURLINGAME, CA

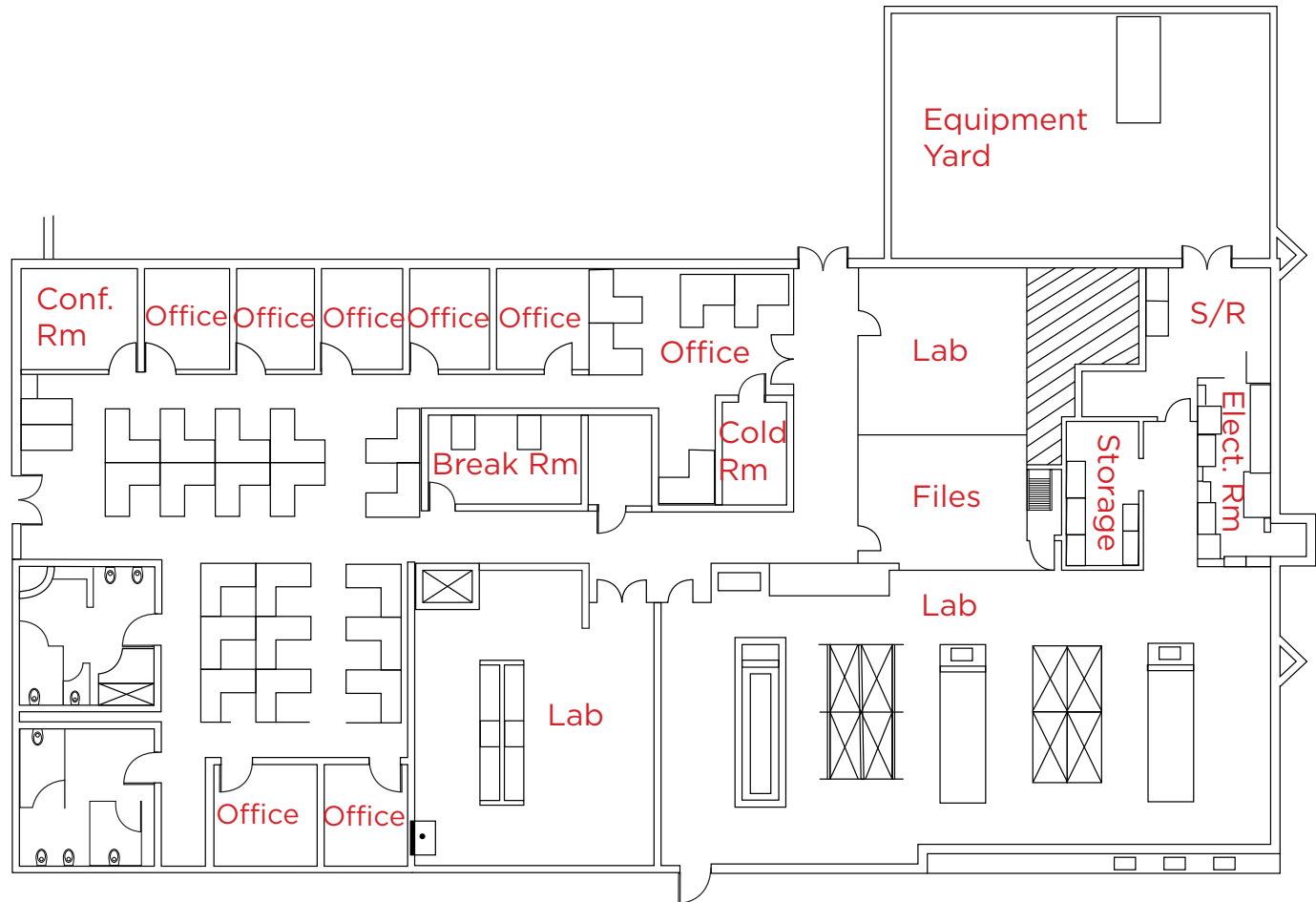
## PROPERTY HIGHLIGHTS

- Existing Lab Infrastructure
- 50/50 Lab to Office
- Biology and Chemistry Labs
- 9 Chemical Fume Hood's
- Potential Use of Existing Lab Equipment
- Back-Up Generator
- Walk-In Cold Room
- Hazardous Materials Storage
- Large Equipment Yard
- Potential Shared Use Opportunity
- SHORT TERM LAB SUBLEASE (2+ YEARS)
- LED: DECEMBER 31, 2024



# FLOOR PLAN

- Plug & Play Office
- 7 Private Offices
- 1 Conference Room
- 25 Cubicles
- Break Room



**Nate Currie**

+1 650 804 9103

nate.currie@cushwake.com

LIC #01418567