

**FOR SUBLEASE**  
**8325 Lenexa Drive**  
Lenexa, KS 66214



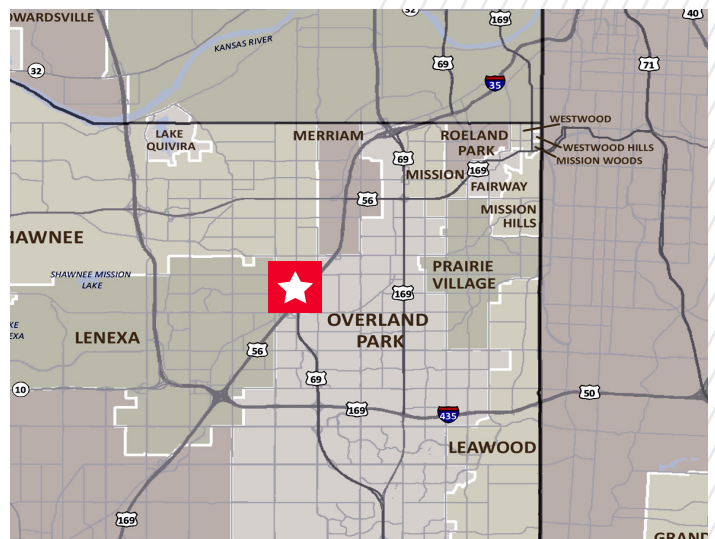
**26,124 SF**

### PROPERTY HIGHLIGHTS

- 8,714 - 26,124 SF available
- Sublease term through 3/31/2025
- \$17.00/SF full-service
- Efficient mix of private offices and open space
- Ample surface parking
- Excellent access to I-35 and 69 Highway

### Contact

CONOR TWIBELL  
Director  
+1 816 412 0244  
conor.twibell@cushwake.com



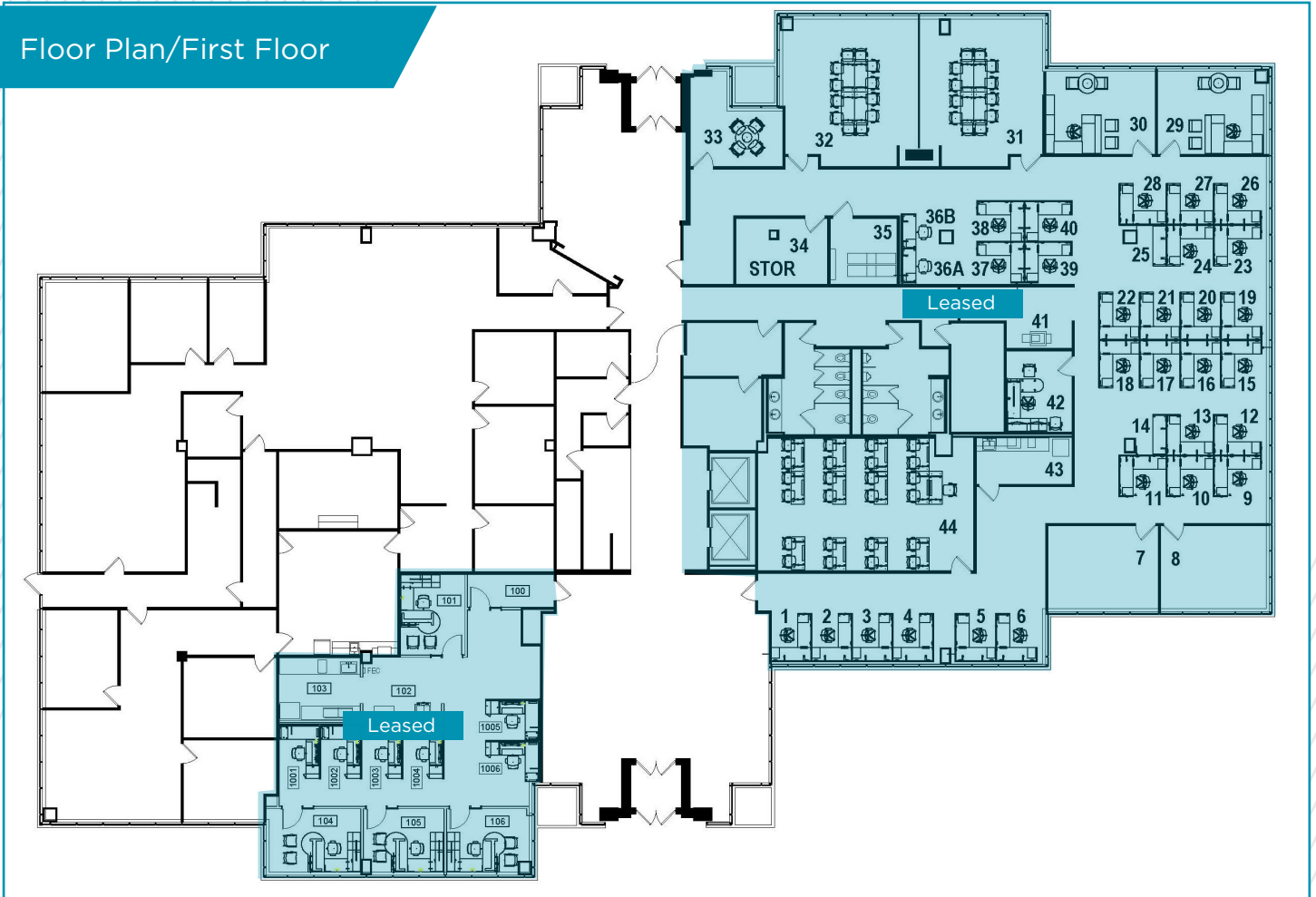
©2022 Cushman & Wakefield. All rights reserved. The information contained in this communication is strictly confidential. This information has been obtained from sources believed to be reliable but has not been verified. No warranty or representation, express or implied, is made as to the condition of the property (or properties) referenced herein or as to the accuracy or completeness of the information contained herein, and same is submitted subject to errors, omissions, change of price, rental or other conditions, withdrawal without notice, and to any special listing conditions imposed by the property owner(s). Any projections, opinions or estimates are subject to uncertainty and do not signify current or future property performance.



**FOR SUBLEASE**  
8325 Lenexa Drive  
Lenexa, KS 66214



Floor Plan/First Floor



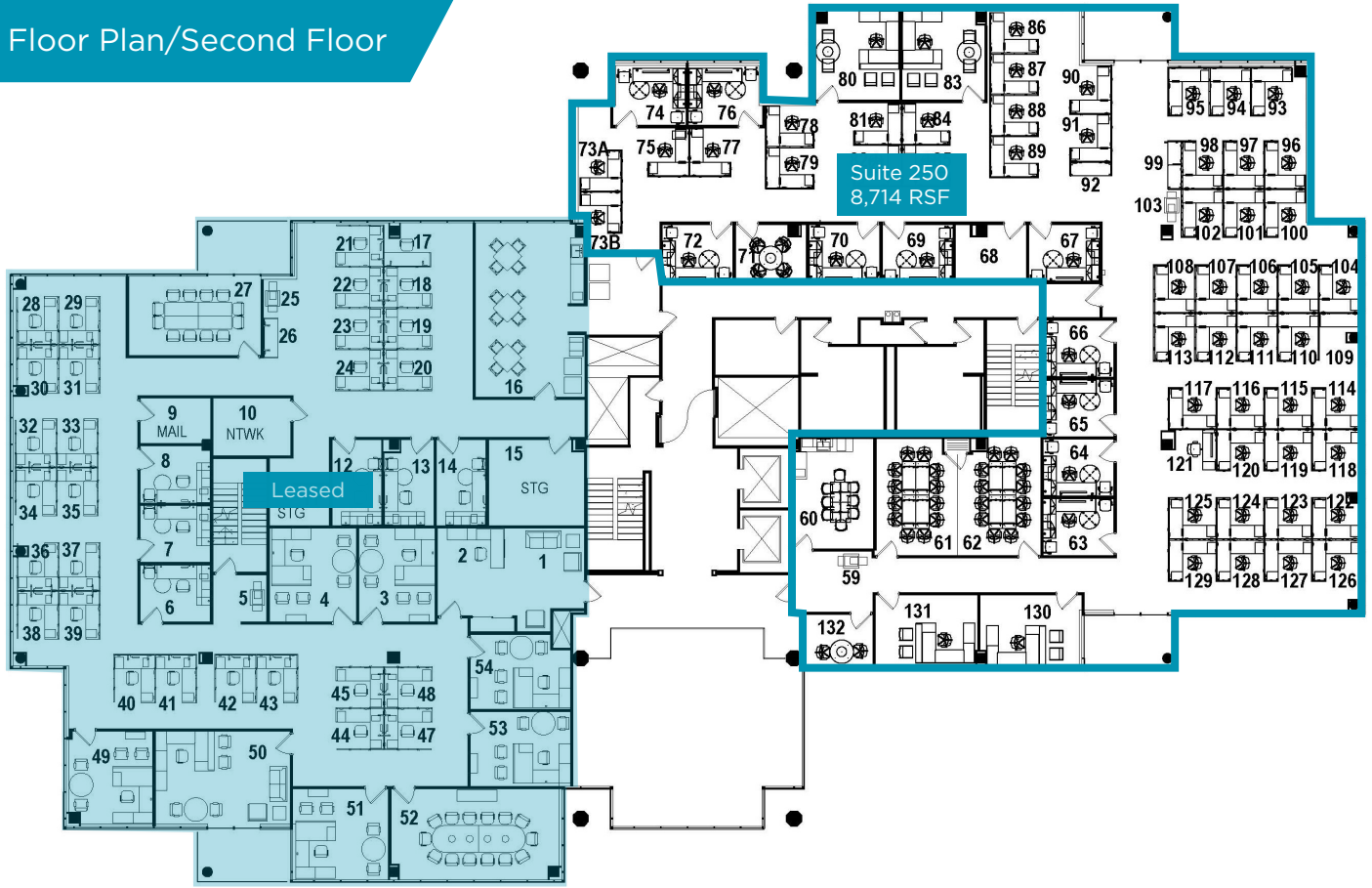
Contact

CONOR TWIBELL  
Director  
+1 816 412 0244  
conor.twibell@cushwake.com

**FOR SUBLEASE**  
**8325 Lenexa Drive**  
**Lenexa, KS 66214**



**Floor Plan/Second Floor**



**Contact**

CONOR TWIBELL  
Director  
+1 816 412 0244  
conor.twibell@cushwake.com

©2022 Cushman & Wakefield. All rights reserved. The information contained in this communication is strictly confidential. This information has been obtained from sources believed to be reliable but has not been verified. No warranty or representation, express or implied, is made as to the condition of the property (or properties) referenced herein or as to the accuracy or completeness of the information contained herein, and same is submitted subject to errors, omissions, change of price, rental or other conditions, withdrawal without notice, and to any special listing conditions imposed by the property owner(s). Any projections, opinions or estimates are subject to uncertainty and do not signify current or future property performance.

**FOR SUBLEASE**  
**8325 Lenexa Drive**  
**Lenexa, KS 66214**



**Floor Plan/Third Floor**



**Contact**

**CONOR TWIBELL**  
Director  
+1 816 412 0244  
conor.twibell@cushwake.com

©2022 Cushman & Wakefield. All rights reserved. The information contained in this communication is strictly confidential. This information has been obtained from sources believed to be reliable but has not been verified. No warranty or representation, express or implied, is made as to the condition of the property (or properties) referenced herein or as to the accuracy or completeness of the information contained herein, and same is submitted subject to errors, omissions, change of price, rental or other conditions, withdrawal without notice, and to any special listing conditions imposed by the property owner(s). Any projections, opinions or estimates are subject to uncertainty and do not signify current or future property performance.



**FOR SUBLEASE**  
**8325 Lenexa Drive**  
**Lenexa, KS 66214**





**FOR SUBLEASE**  
**8325 Lenexa Drive**  
Lenexa, KS 66214



**AERIAL/LOCATION MAP**

## Contact

CONOR TWIBELL  
Director  
+1 816 412 0244  
[conor.twibell@cushwake.com](mailto:conor.twibell@cushwake.com)

©2022 Cushman & Wakefield. All rights reserved. The information contained in this communication is strictly confidential. This information has been obtained from sources believed to be reliable but has not been verified. No warranty or representation, express or implied, is made as to the condition of the property (or properties) referenced herein or as to the accuracy or completeness of the information contained herein, and same is submitted subject to errors, omissions, change of price, rental or other conditions, withdrawal without notice, and to any special listing conditions imposed by the property owner(s). Any projections, opinions or estimates are subject to uncertainty and do not signify current or future property performance.