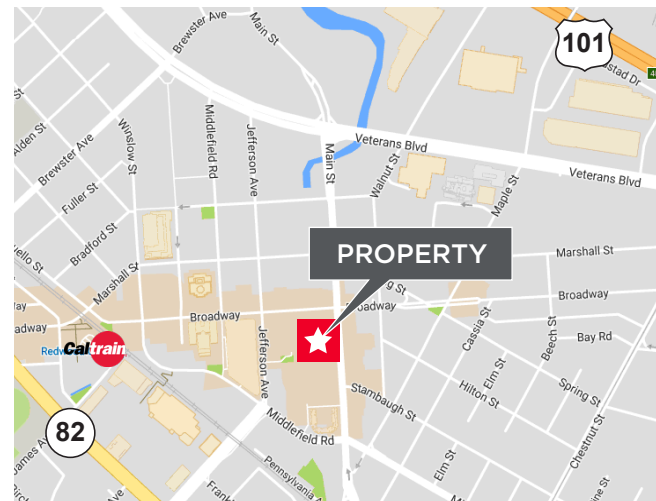




## OFFICE/RETAIL FOR LEASE

### Property Highlights

- Suite 826: ±750 SF
- Suite 850: ±1,902 SF
- Short Walk to Caltrain
- Desirable Downtown Redwood City location near Coffee Shops, Shopping & More
- Efficient Open Floor Plan
- Polished Concrete Floors
- Open Kitchen
- Flexible Lease Terms



For more information, please contact:

**Eric Sorensen**

Director  
+1 650 320 0234  
eric.c.sorensen@cushwake.com  
LIC #01709528

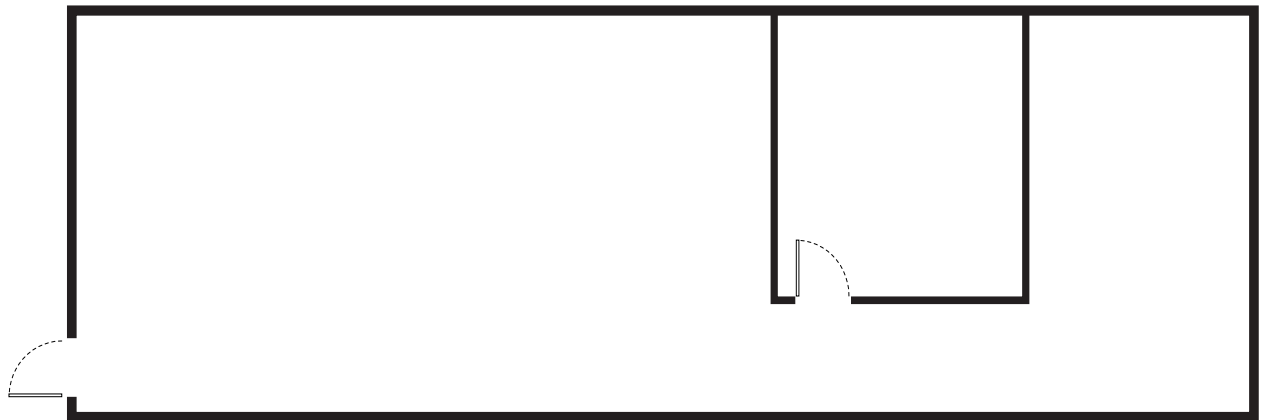
**Jed Springer**

Senior Associate  
+1 650 320 0210  
jed.springer@cushwake.com  
LIC #02012629

525 University Avenue, Suite 220  
Palo Alto, California 94301  
main +1 650 852 1200  
fax +1 650 856 1098  
[cushmanwakefield.com](http://cushmanwakefield.com)

## Floor Plan

Suite 826: ±750 SF



Floor plan not to scale

For more information, please contact:

**Eric Sorensen**

Director  
+1 650 320 0234  
eric.c.sorensen@cushwake.com  
LIC #01709528

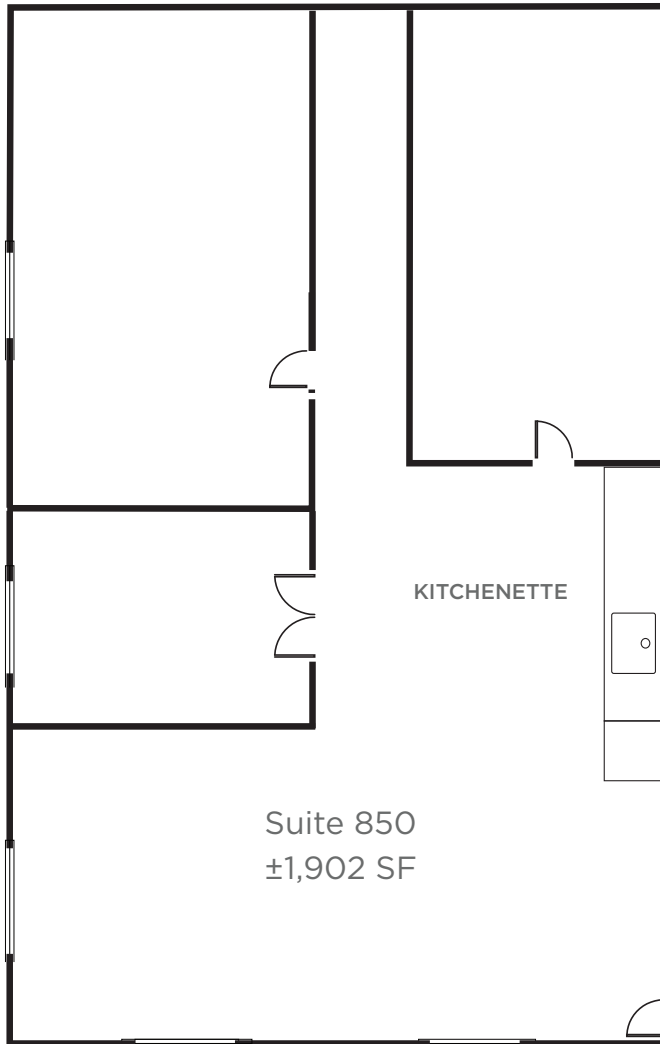
**Jed Springer**

Senior Associate  
+1 650 320 0210  
jed.springer@cushwake.com  
LIC #02012629

525 University Avenue, Suite 220  
Palo Alto, California 94301  
main +1 650 852 1200  
fax +1 650 856 1098  
[cushmanwakefield.com](http://cushmanwakefield.com)

## Floor Plan

Suite 850:  $\pm 1,902$  SF



Floor plan not to scale

For more information, please contact:

**Eric Sorensen**

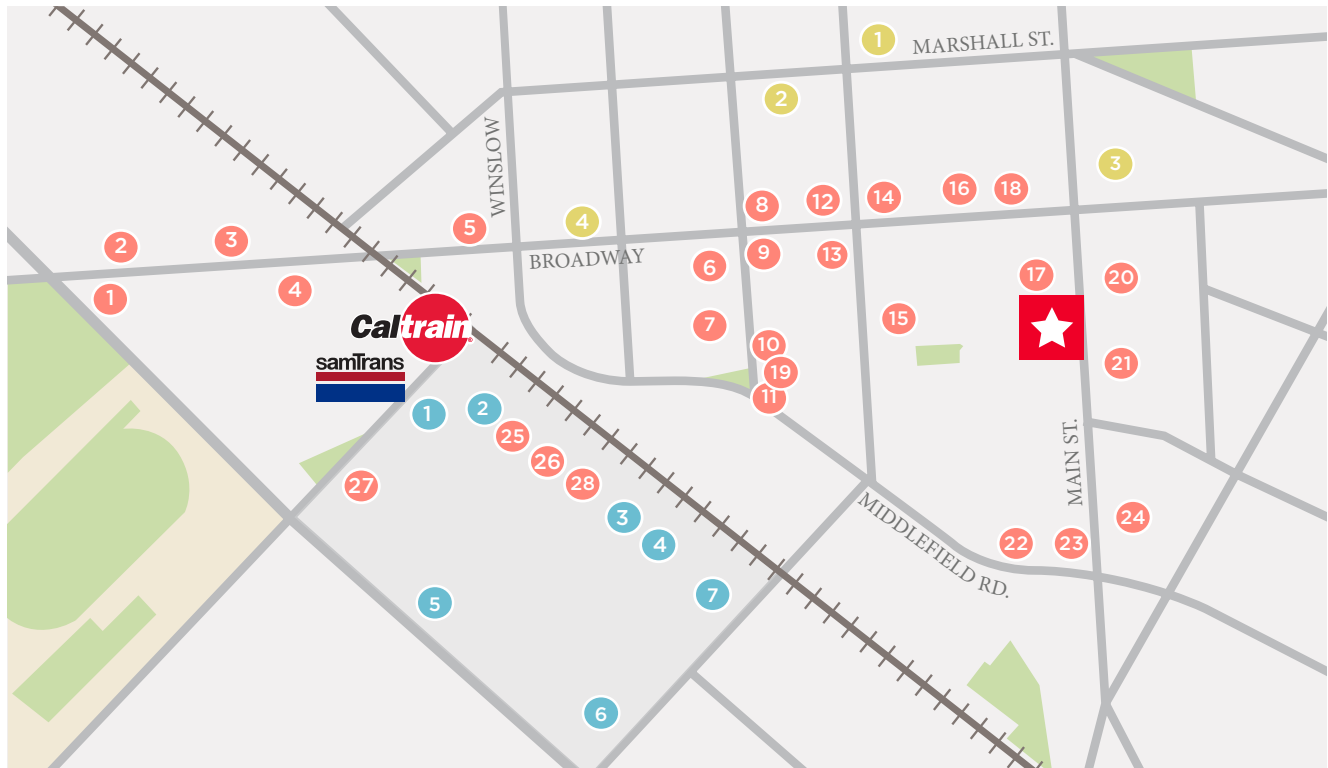
Director  
+1 650 320 0234  
eric.c.sorensen@cushwake.com  
LIC #01709528

**Jed Springer**

Senior Associate  
+1 650 320 0210  
jed.springer@cushwake.com  
LIC #02012629

525 University Avenue, Suite 220  
Palo Alto, California 94301  
main +1 650 852 1200  
fax +1 650 856 1098  
[cushmanwakefield.com](http://cushmanwakefield.com)

## Downtown Redwood City Amenities:



### RESTAURANTS

- |                          |                        |
|--------------------------|------------------------|
| 1 Ike's                  | 14 Margaritas          |
| 2 City Pub               | 15 Pasha Mediterranean |
| 3 Peet's                 | 16 LV MAR              |
| 4 Gourmet Haus           | 17 Venga Empanadas     |
| 5 The Sandwich Spot      | 18 Vesta               |
| 6 Quinto Sol             | 19 Mandaloun           |
| 7 Cafe La Tartine        | 20 Martin's West       |
| 8 Sakura                 | 21 Angelica's Bistro   |
| 9 Five Guys Burgers      | 22 Donato              |
| 10 Chipotle              | 23 Milagros            |
| 11 Portobello Grill      | 24 Patty Shack         |
| 12 Philz Coffee          | 25 Subway              |
| 13 Old Spaghetti Factory | 26 Noah's Bagels       |

- |                |
|----------------|
| 27 Jamba Juice |
| 28 Starbuck's  |

### RETAIL

- |                  |
|------------------|
| 1 CVS Pharmacy   |
| 2 Super Cuts     |
| 3 Safeway        |
| 4 See's Candy    |
| 5 Barnes & Noble |
| 6 Old Navy       |
| 7 Pier One       |

### BANKS

- |                   |
|-------------------|
| 1 Union Bank      |
| 2 Bank of America |
| 3 Wells Fargo     |
| 4 Chase           |

### TRANSPORTATION



For more information, please contact:

#### Eric Sorensen

Director  
+1 650 320 0234  
eric.c.sorensen@cushwake.com  
LIC #01709528

#### Jed Springer

Senior Associate  
+1 650 320 0210  
jed.springer@cushwake.com  
LIC #02012629

525 University Avenue, Suite 220  
Palo Alto, California 94301  
main +1 650 852 1200  
fax +1 650 856 1098  
[cushmanwakefield.com](http://cushmanwakefield.com)