

6,300 SF AVAILABLE

7177

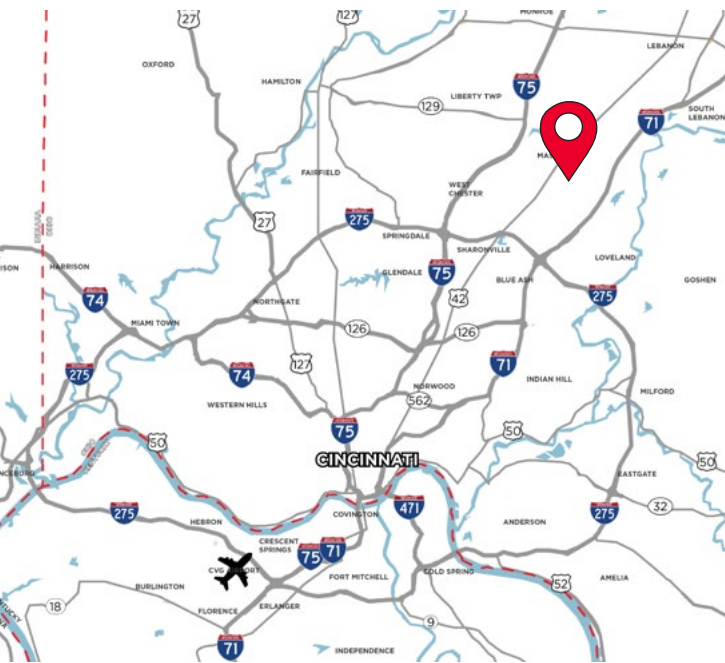
CENTRAL PARKE

MASON, OH 45040



OFFICE/TECH SPACE

FOR LEASE: \$8.00/PSF GROSS "AS IS"



PROPERTY HIGHLIGHTS

- 6,300 SF Available
- Ideal for Showroom, Office/Flex Space, or Storage
- Space includes patio access
- Short or long term options
- Zoned Industrial - PUD
- Wet System

For more information, contact:

Tom McCormick, SIOR, CCIM
Managing Director
+1 513 763 3025
tom.mccormick@cushwake.com

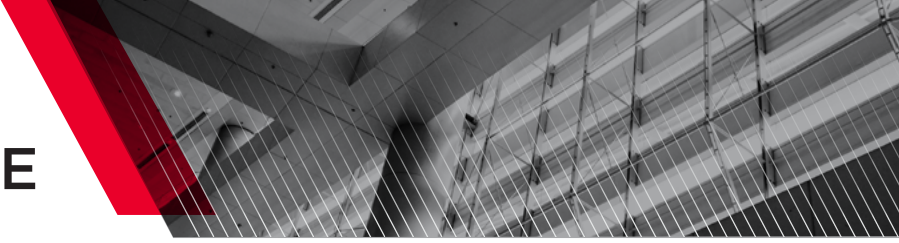
Ben McNab, SIOR, CCIM
Managing Director
+1 513 763 3019
ben.mcnab@cushwake.com

201 E. Fourth Street, Suite 1800
Cincinnati, OH 45202
P: +1 513 421 4884
cushmanwakefield.com

FOR LEASE

7177 CENTRAL PARKE

MASON, OH 45040



BUILDING SPECIFICATIONS

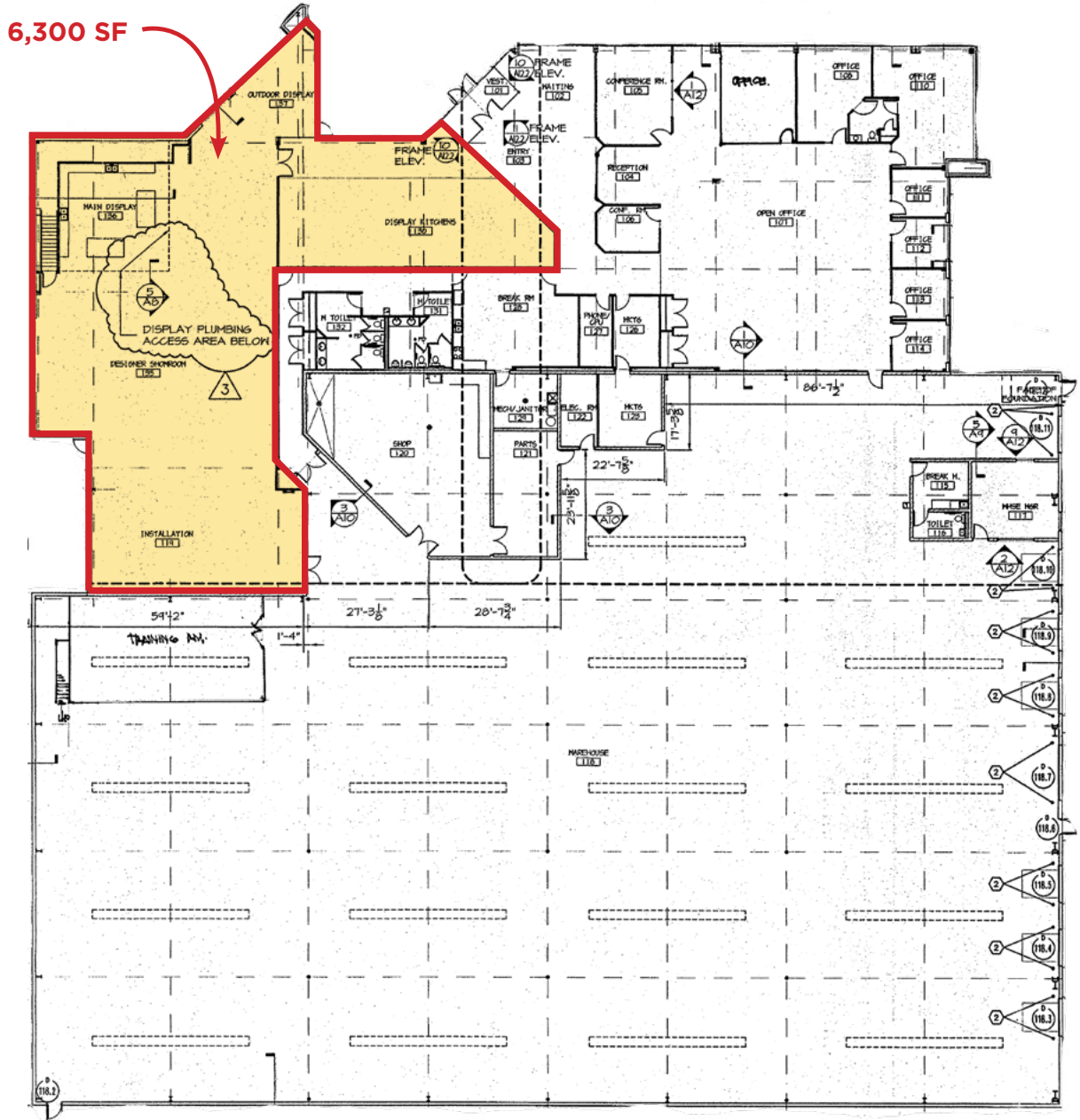
\$8.00/PSF GROSS "AS IS"

LOCATION	Mason, Ohio, Warren County	MISCELLANEOUS	600 SF Patio
BUILDING SIZE	48,115 SF	LIGHTING	LED
AVAILABLE SIZE	6,300 SF	HVAC	Office HVAC
YEAR BUILT	2000	ELECTRIC/GAS	www.duke-energy.com
CONSTRUCTION	Metal with block & brick	WATER/SEWER	www.cincinnati-oh.gov/water
PARKING	53 Spaces Total	TELEPHONE	www.cincinnati-bell.com
FIRE SUPPRESSION	Wet System	DATA	www.spectrum.com



FOR LEASE
7177 CENTRAL PARKE
MASON, OH 45040

FLOOR PLAN



For more information, contact:

Tom McCormick, SIOR, CCIM
Managing Director
+1 513 763 3025
tom.mccormick@cushwake.com

Ben McNab, SIOR, CCIM
Managing Director
+1 513 763 3019
ben.mcnab@cushwake.com

201 E. Fourth Street, Suite 1800
Cincinnati, OH 45202
P: +1 513 421 4884
cushmanwakefield.com