



GREENFIELD FARMS

GREENFIELD FARMS

442,624 SF Build-to-Suit

N. Buck Creek Road | Greenfield, Indiana 46140

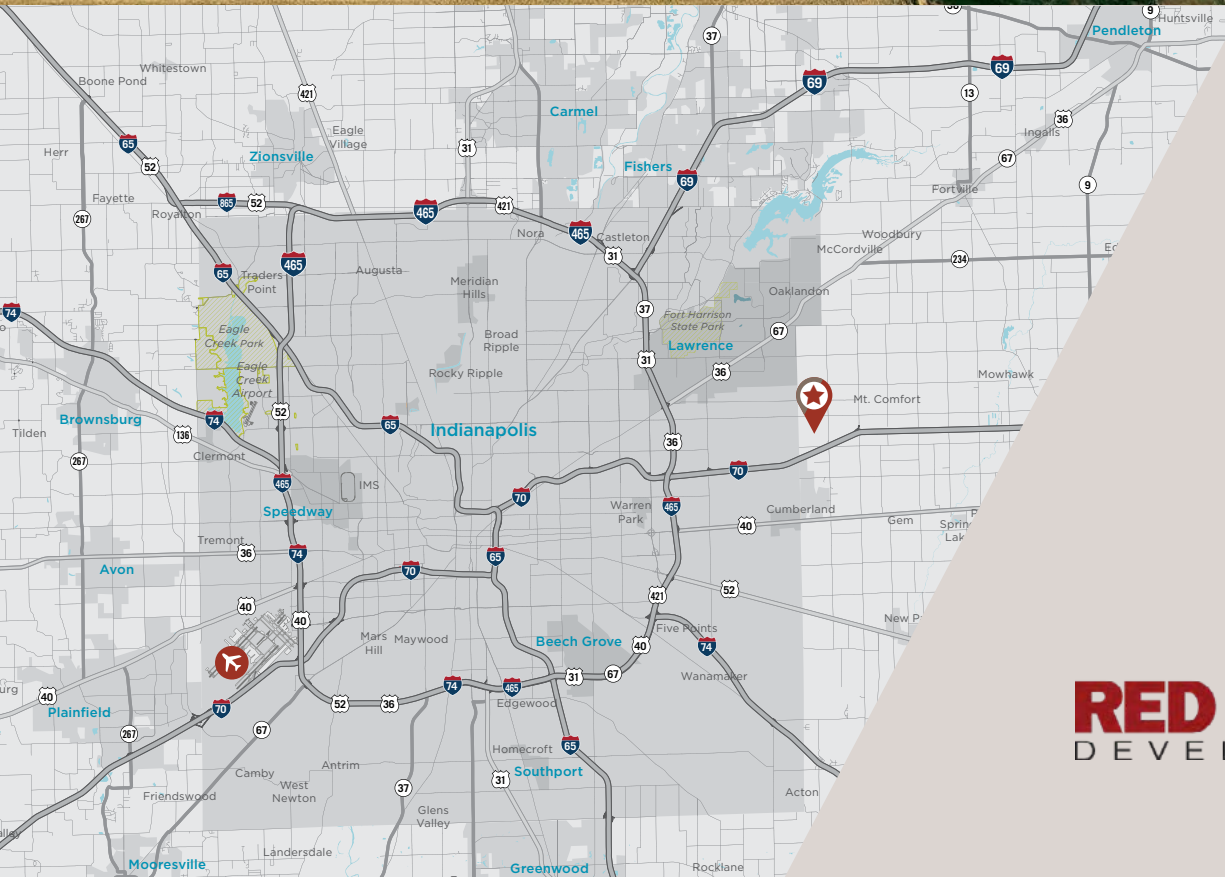
BUILD-TO-SUIT SITES

1,053,360 SF



442,624 SF

737,135 SF



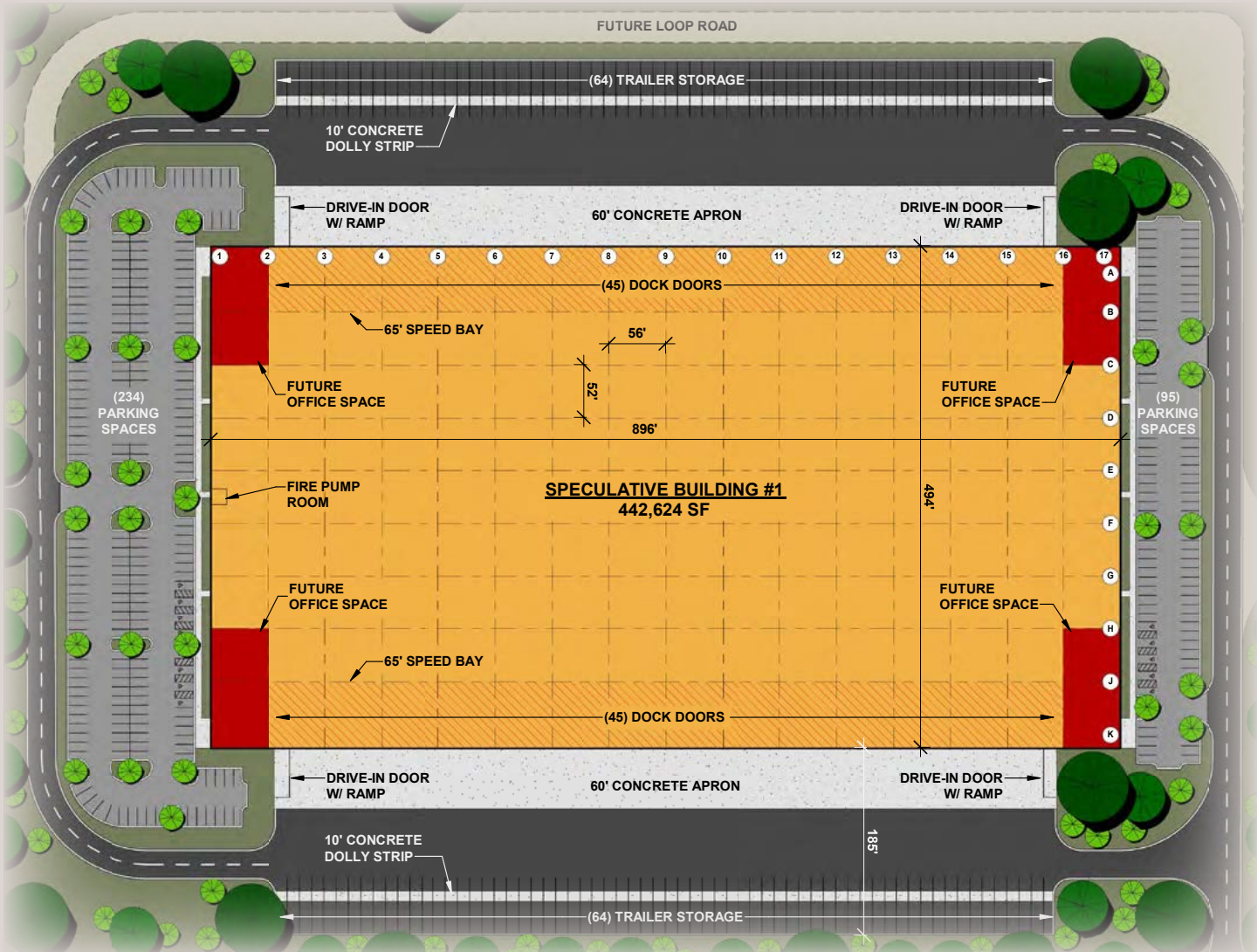


GREENFIELD FARMS

GREENFIELD FARMS

442,624 SF Build-to-Suit

N. Buck Creek Road | Greenfield, Indiana 46140



BUILD-TO-SUIT SPECIFICATIONS

- Building size: 442,624 sf (494' x 896')
- Configuration: Cross dock
- Column spacing: 52' x 56' bays
65' speed bays
- Truck court: Up to 200' deep
- Dock doors: 90 total
- Drive-in doors: 4 with ramps
- Auto parking: 329 spaces
- Trailer storage: 128 (12' x 60') total

UTILITY PROVIDERS



ELECTRIC
Duke Energy



GAS
CenterPoint Energy



WATER
Citizens Energy



SEWER
Western Hancock Utilities



FIBER
AT&T



GREENFIELD FARMS

GREENFIELD FARMS

442,624 SF Build-to-Suit

N. Buck Creek Road | Greenfield, Indiana 46140

NOTABLE TENANTS IN THE IMMEDIATE AREA



2.5 MILES TO INDIANAPOLIS REGIONAL AIRPORT

1.95 MILES TO I-70

1.25 MILES TO I-70

BUILD-TO-SUIT 737,135 SF

AVAILABLE 1,053,360 SF

BUILD-TO-SUIT 442,624 SF

INDIANAPOLIS-MARION COUNTY

KEY DISTANCES

- Indianapolis International Airport: 27 miles
- FedEx Hub: 23 miles
- Indianapolis Intermodal Facility (container service): 17 miles

I-70 East & West Interchange: 1.95 miles

I-65 North & South Interchange: 13 miles

I-69 North: 13 miles

I-74 South: 14 miles

I-465 North & South Interchange: 8 miles



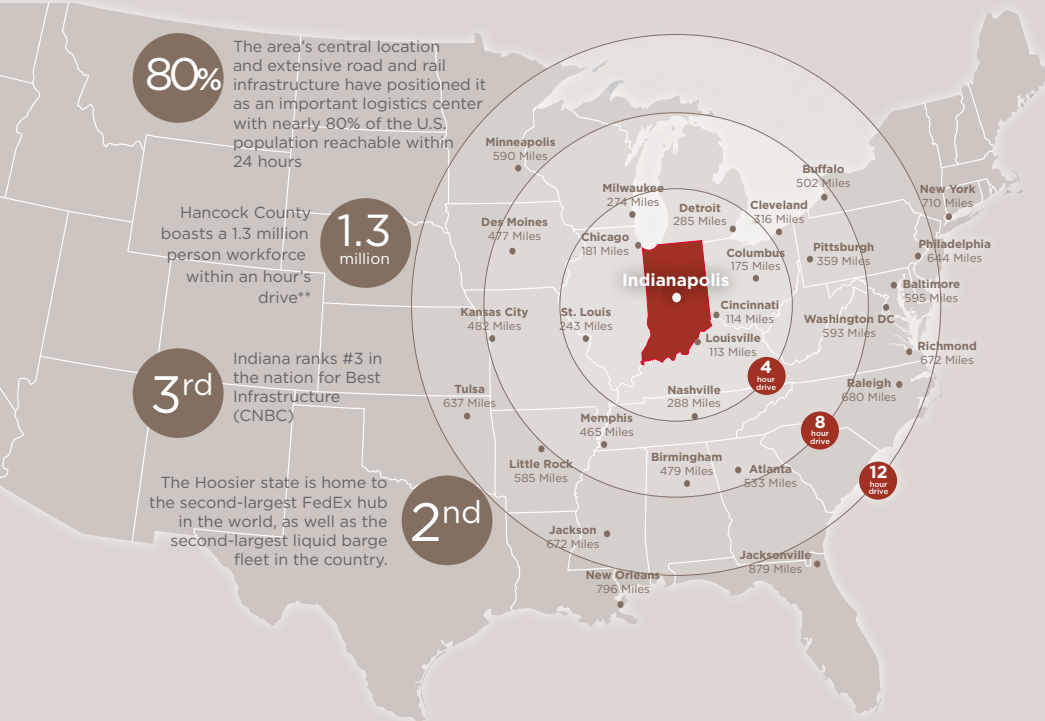
GREENFIELD FARMS

GREENFIELD FARMS

442,624 SF Build-to-Suit

N. Buck Creek Road | Greenfield, Indiana 46140

Chicago	181 miles
Cincinnati	114 miles
Columbus	175 miles
Detroit	285 miles
FedEx Hub	23 miles
Indpls Int'l Airport	27 miles
I-465 (via I-70)	8 miles
Louisville	288 miles
St. Louis	243 miles



CUSHMAN & WAKEFIELD

Michael W.M. Weishaar, SIOR
 Cushman & Wakefield
 +1 317 639 0494
 michael.weishaar@cushwake.com

Grant M. Lindley, SIOR, CCIM
 Cushman & Wakefield
 +1 317 639 0446
 grant.lindley@cushwake.com

RED ROCK DEVELOPMENTS

Leah B. Bailey, SIOR
 Red Rock Developments
 +1 704 619 3825
 lbailey@redrockdevelopments.com

©Cushman & Wakefield. All rights reserved. The information contained in this communication is strictly confidential. This information has been obtained from sources believed to be reliable but has not been verified. No warranty or representation, express or implied, is made as to the condition of the property (or properties) referenced herein or as to the accuracy or completeness of the information contained herein, and same is submitted subject to errors, omissions, change of price, rental or other conditions, withdrawal without notice, and to any special listing conditions imposed by the property owner(s). Any projections, opinions or estimates are subject to uncertainty and do not signify current or future property performance. **Information obtained via the Hancock County Economic Development Corporation website (<https://hancockkcdc.com/>)