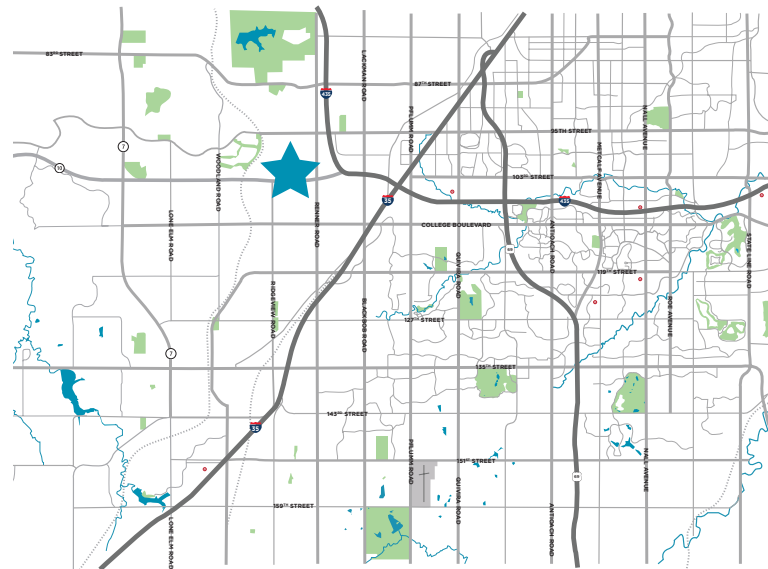


FOR LEASE
17775 W 106th Street
Olathe, KS



Property Highlights

- Class A space with direct building lobby access
- Enjoy lots of natural light in this well maintained property
- Local ownership
- Suite 201: 7,758 RSF (divisible)
- Modern finishes throughout the building which is located in a park-like setting
- Lease Rate: \$23.50 PSF full service
- Easy access at K-10 & Ridgeview
- Close proximity to restaurants, hotels, Genesis Health Club and the Olathe Conference Center

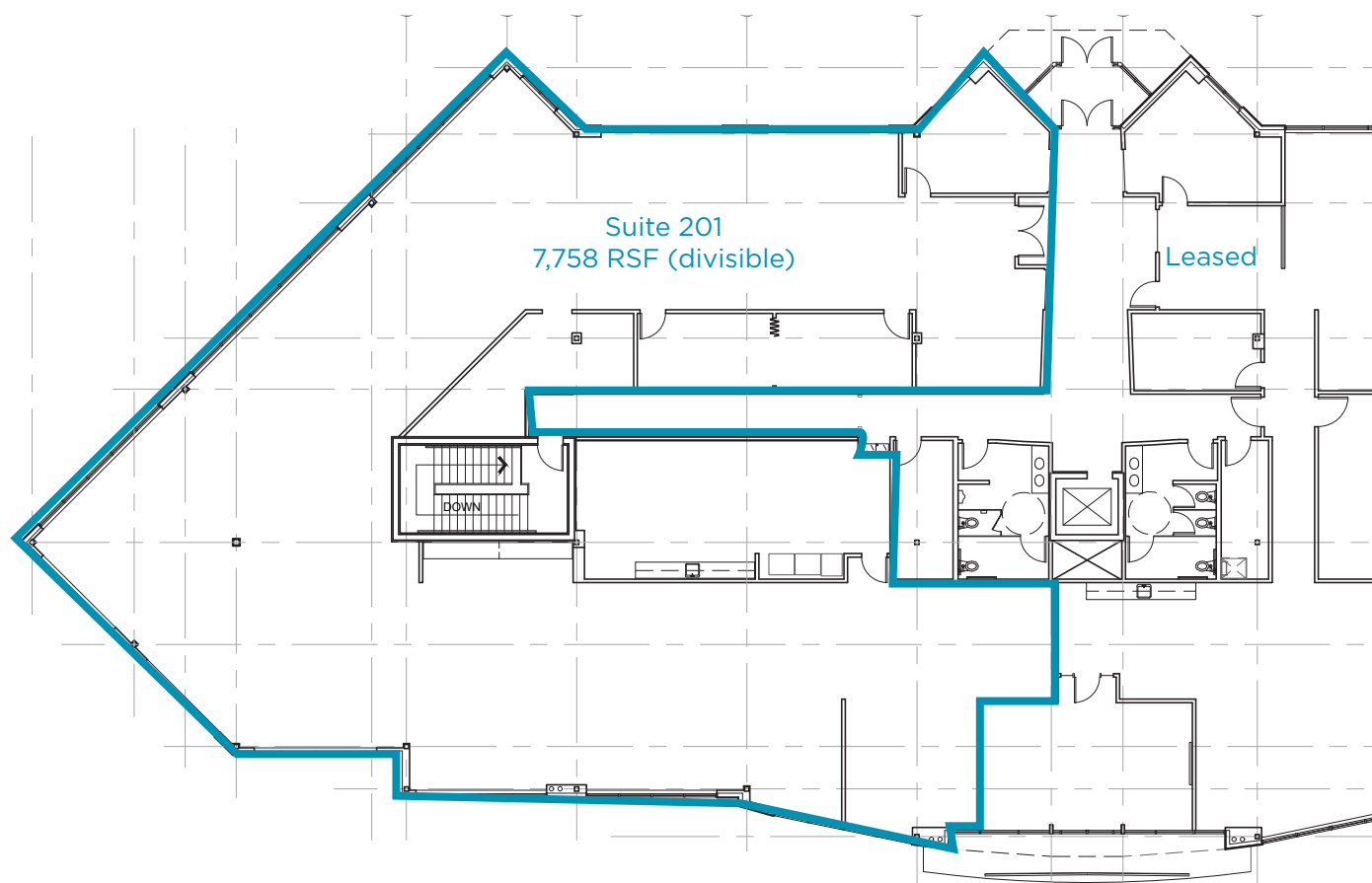


Contact

MARTY GILCHRIST, CCIM
Senior Associate
+1 816 216 5655
marty.gilchrist@cushwake.com

4600 Madison Avenue, Suite 800
Kansas City, MO 64112
Main +1 816 221 2200
Fax +1 913 273 1398
cushmanwakefield.com

SUITE 201 7,758 RSF (divisible)



Contact

MARTY GILCHRIST, CCIM
Senior Associate
+1 816 216 5655
marty.gilchrist@cushwake.com





Bird's Eye View



Contact

MARTY GILCHRIST, CCIM
Senior Associate
+1 816 216 5655
marty.gilchrist@cushwake.com

4600 Madison Avenue, Suite 800
Kansas City, MO 64112
Main +1 816 221 2200
Fax +1 913 273 1398
cushmanwakefield.com