



# FOR LEASE

Park 100 | Building 116  
7108-7176 Waldemar Drive  
Indianapolis, Indiana



4,723 SF - 2 Units

## Property Features

-  35,713 SF building size
-  4.9 acres total site size
-  Ample car parking
-  Nearby amenities



## Current Availabilities

Suite 7130 - 3,311 SF  
Suite 7172 - 1,412 SF

[VIRTUAL TOUR](#)

Owned By



Ed Beehner  
MapleTree Investments  
+1 312 761 9477  
ed.beehner@mapletree.com.sg

Leased By



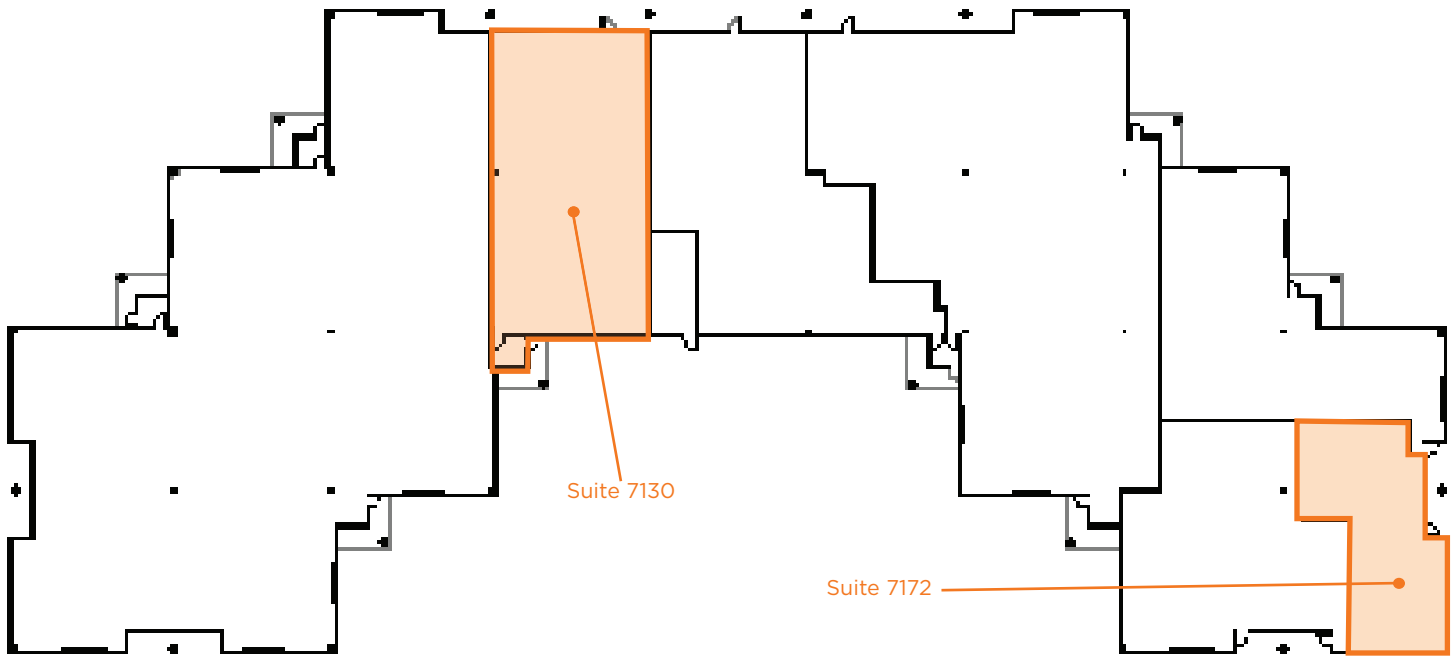
Kevin Archer  
Senior Director  
+1 317 218 7217  
kevin.archer@cushwake.com

Joshua Graham  
Director  
+1 317 639 0491  
joshua.graham@cushwake.com

Jon R. Owens, SIOR  
Managing Director  
+1 317 639 0447  
jon.owens@cushwake.com

# 7108-7176 WALDEMAR DRIVE

## SITE PLAN



## Current Availabilities

### Suite 7130

>>> 3,311 SF available

>>> 100% office

### Suite 7172

>>> 1,412 SF available

>>> 100% office

Owned By

**maple<sup>tree</sup>**

Ed Beehner  
Mapletree Investments  
+1 312 761 9477  
ed.beehner@mapletree.com.sg

Leased By

 **CUSHMAN & WAKEFIELD**

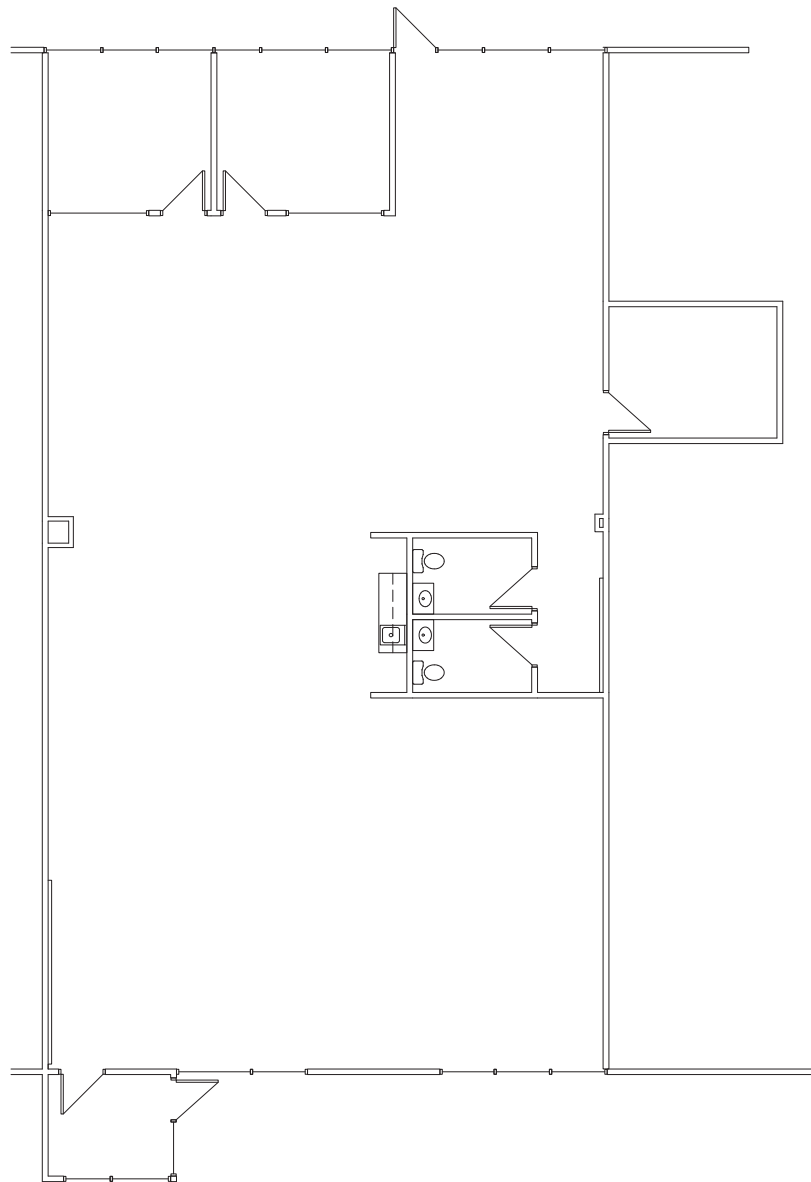
Kevin Archer  
Senior Director  
+1 317 218 7217  
kevin.archer@cushwake.com

Joshua Graham  
Director  
+1 317 639 0491  
joshua.graham@cushwake.com

Jon R. Owens, SIOR  
Managing Director  
+1 317 639 0447  
jon.owens@cushwake.com

# 7108-7176 WALDEMAR DRIVE

## SUITE 7130 - 3,311 SF



- >>> 3,311 SF available
- >>> 100% office available
- >>> Move-in ready
- >>> Conference space
- >>> Several private offices
- >>> Small kitchenette

Owned By

**maple<sup>tree</sup>**

Ed Beehner  
Mapletree Investments  
+1 312 761 9477  
ed.beehner@mapletree.com.sg

Leased By

 **CUSHMAN & WAKEFIELD**

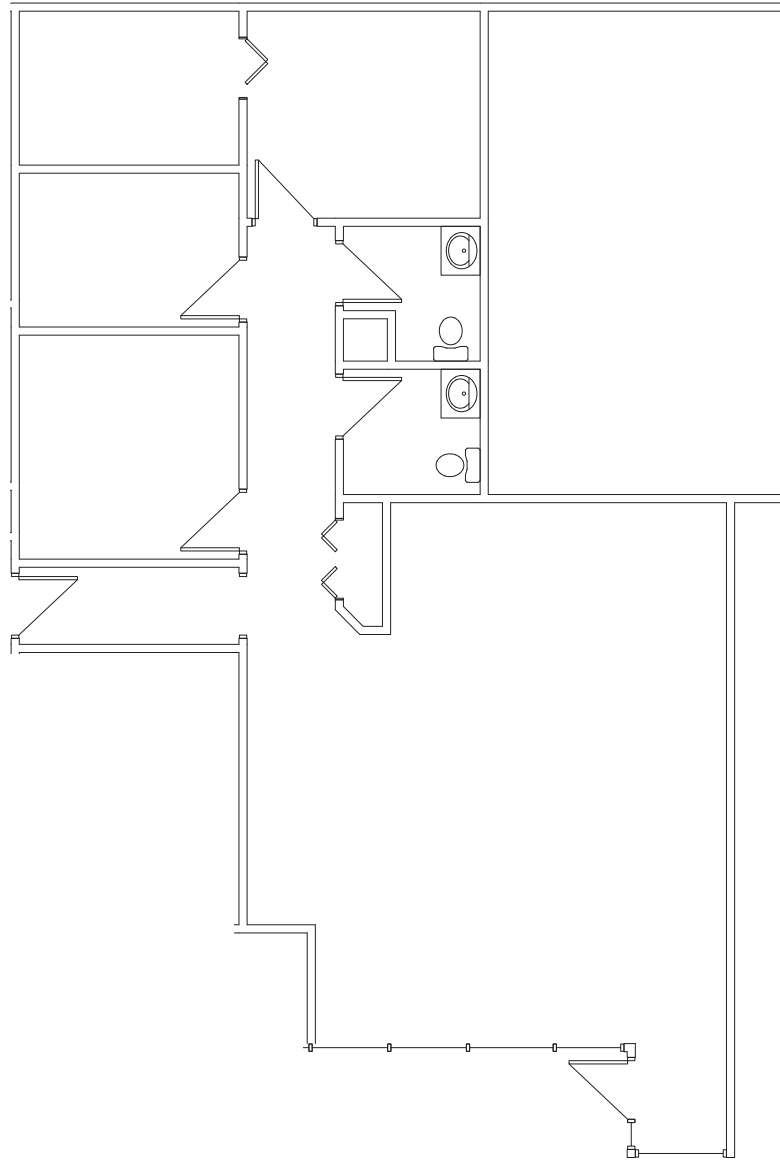
Kevin Archer  
Senior Director  
+1 317 218 7217  
kevin.archer@cushwake.com

Joshua Graham  
Director  
+1 317 639 0491  
joshua.graham@cushwake.com

Jon R. Owens, SIOR  
Managing Director  
+1 317 639 0447  
jon.owens@cushwake.com

# 7108-7176 WALDEMAR DRIVE

## SUITE 7172 - 1,412 SF



- >>> 1,412 SF available
- >>> 100% office available
- >>> Multiple private offices
- >>> Large cubicle area

Owned By

**maple**tree

Ed Beehner  
Mapletree Investments  
+1 312 761 9477  
ed.beehner@mapletree.com.sg

Leased By

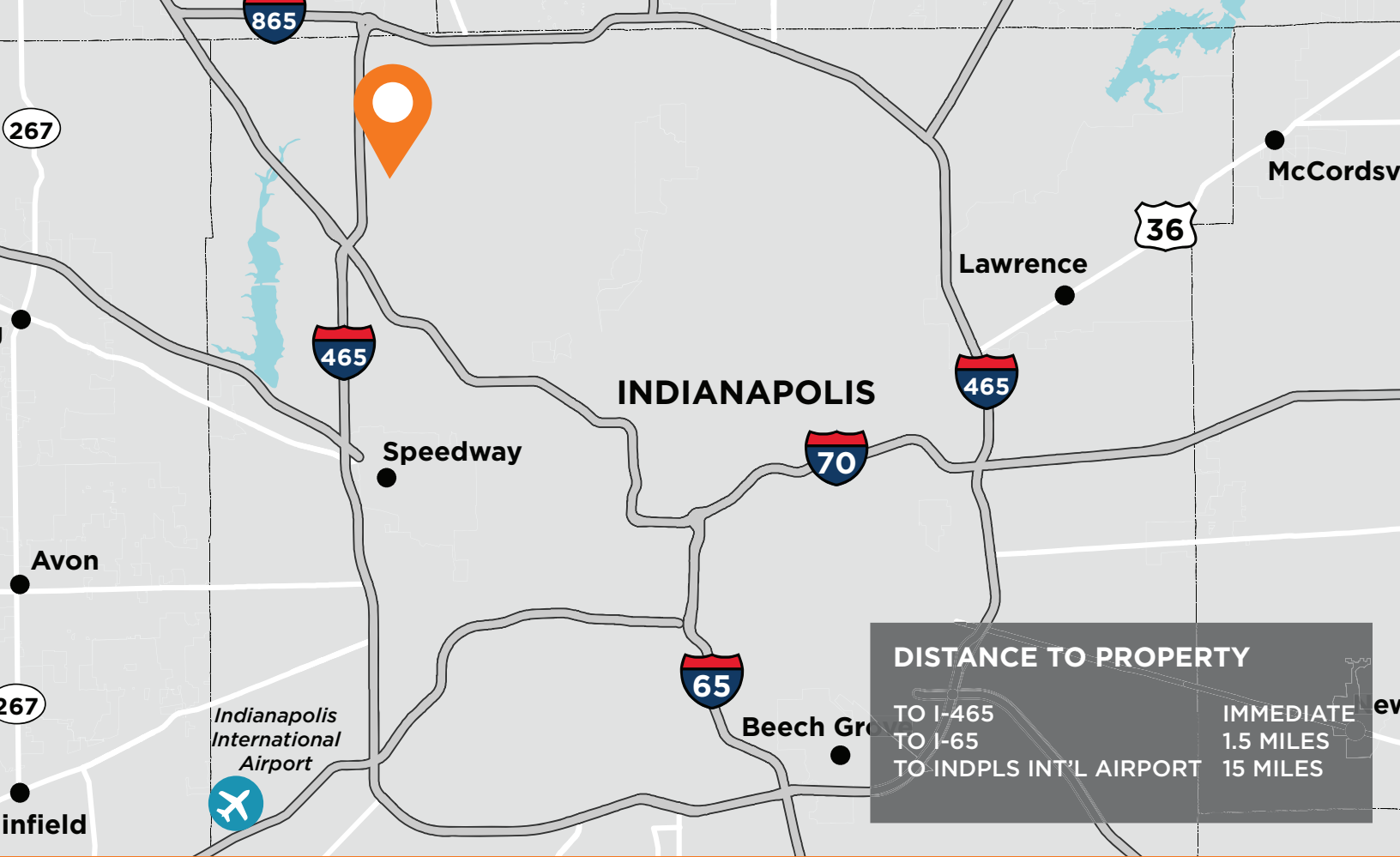
 **CUSHMAN & WAKEFIELD**

Kevin Archer  
Senior Director  
+1 317 218 7217  
kevin.archer@cushwake.com

Joshua Graham  
Director  
+1 317 639 0491  
joshua.graham@cushwake.com

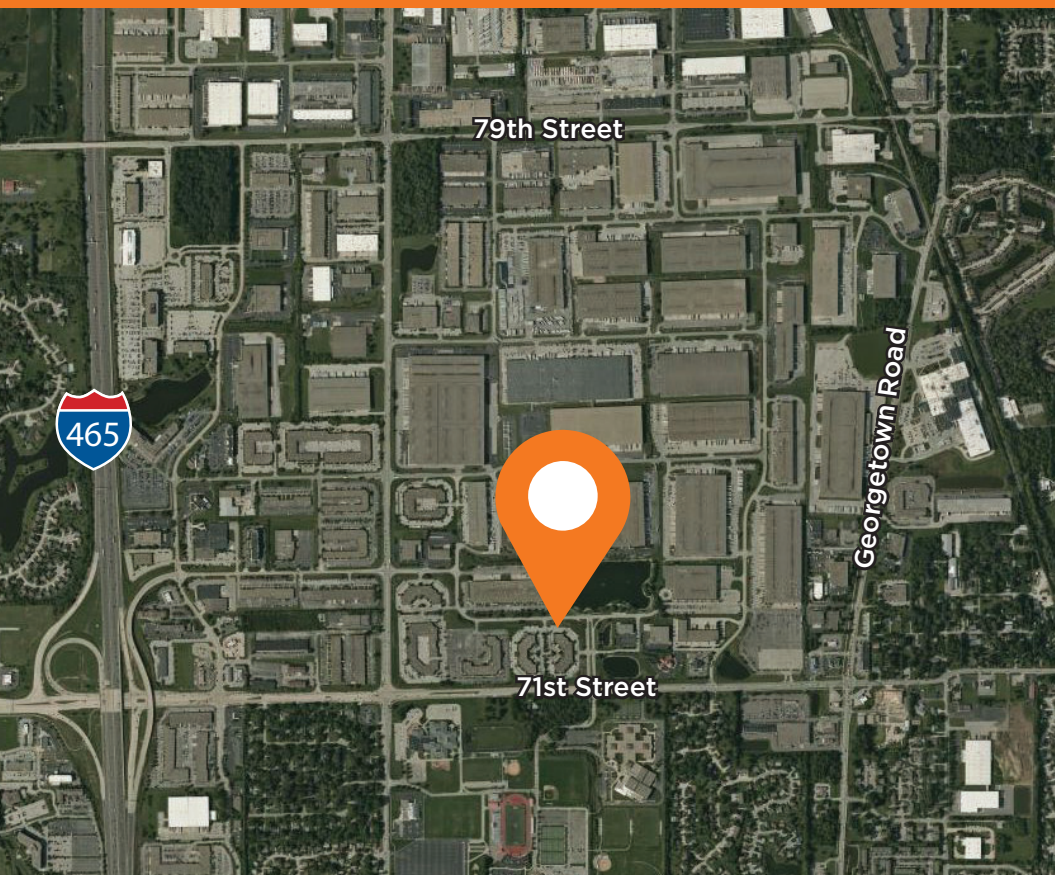
Jon R. Owens, SIOR  
Managing Director  
+1 317 639 0447  
jon.owens@cushwake.com





**DISTANCE TO PROPERTY**

TO I-465	IMMEDIATE
TO I-65	1.5 MILES
TO INDPLS INT'L AIRPORT	15 MILES



**Strategic Location**

Park 100 provides direct access to central Indiana's highways. Conveniently located on I-465 and minutes from I-65 and Indianapolis International Airport

**About Us**

Mapletree is a leading global real estate developer, investor and manager headquartered in Singapore. Mapletree owns and manages more than 70 million square feet of logistics and industrial properties across 26 states with offices in New York, Chicago, Atlanta, Dallas and Los Angeles.

[www.mapletree.com.sg](http://www.mapletree.com.sg)

Owned By



Ed Beehner  
Mapletree Investments  
+1 312 761 9477  
ed.beehner@mapletree.com.sg

Leased By



Kevin Archer  
Senior Director  
+1 317 218 7217  
kevin.archer@cushwake.com

Joshua Graham  
Director  
+1 317 639 0491  
joshua.graham@cushwake.com

Jon R. Owens, SIOR  
Managing Director  
+1 317 639 0447  
jon.owens@cushwake.com