

BROUGHER PLAZA
INDIANAPOLIS ————— INDIANA

MAKE THE ROUTINE

R E M A R K A B L E

114,517 SF AVAILABLE IN THE HEART OF MIDTOWN



2960 NORTH MERIDIAN STREET

Located on 8.25-acres of Brouger Historic Square, 2960 Brouger Plaza offers a modern office destination in the heart of Indianapolis' Historic Meridian Park. This is an exciting opportunity to take advantage of newly renovated common areas, convenient on-site lifestyle amenities and all the vibrant experiences along North Meridian Street.

PROPERTY HIGHLIGHTS

- Total Available Space: 107,689 SF
- Recent common area renovations
- Located immediately south of the Children's Museum
- Abundant free parking on site
- Easy access to I-65 via 30th Street and/or 29th Street
- Close to North Meridian Street amenities
- Local ownership
- On-site management
- 24/7 security surveillance
- 5,000 SF conference center
- On-site cafe/catering service
- On-site fitness center with dedicated showers



2960 N. Meridian St.

1ST FLOOR

- STE 140
- STE 165
- STE 180
- STE 190

2ND FLOOR

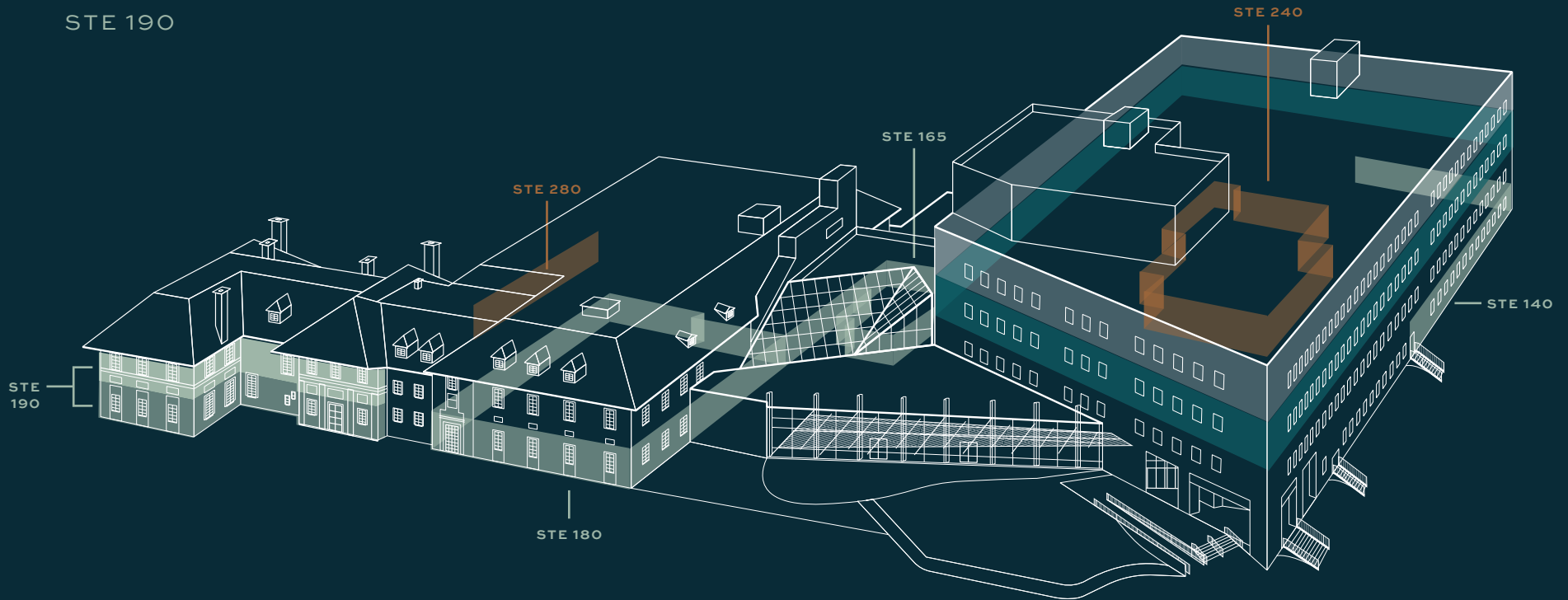
- STE 240
- STE 280

3RD FLOOR

- 3RD FLOOR

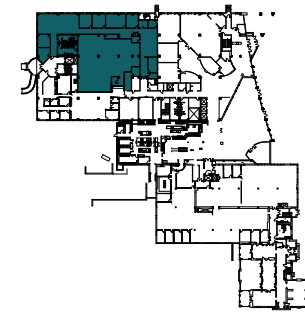
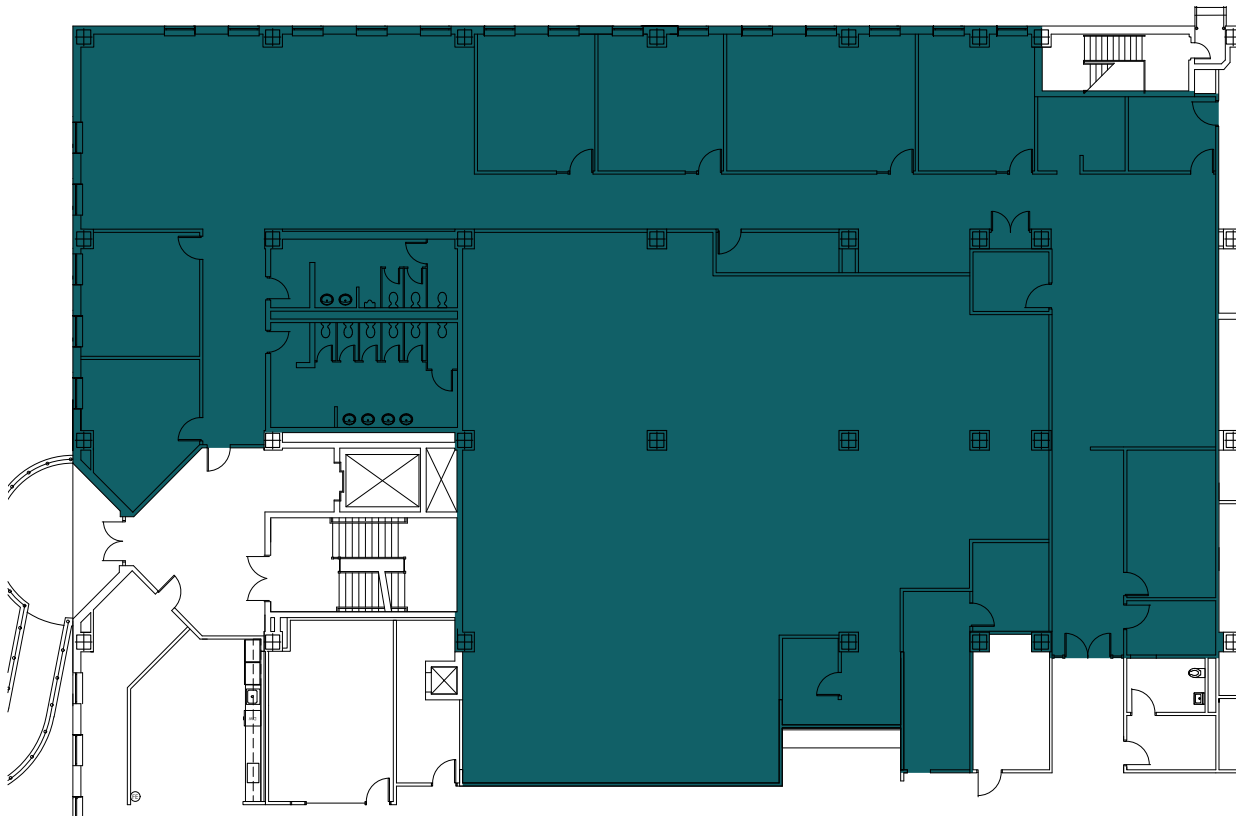
4TH FLOOR

- 4TH FLOOR



1ST FLOOR

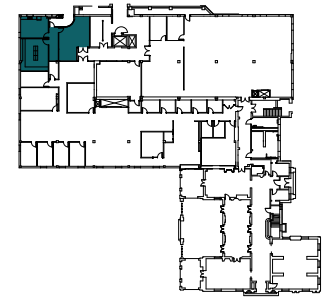
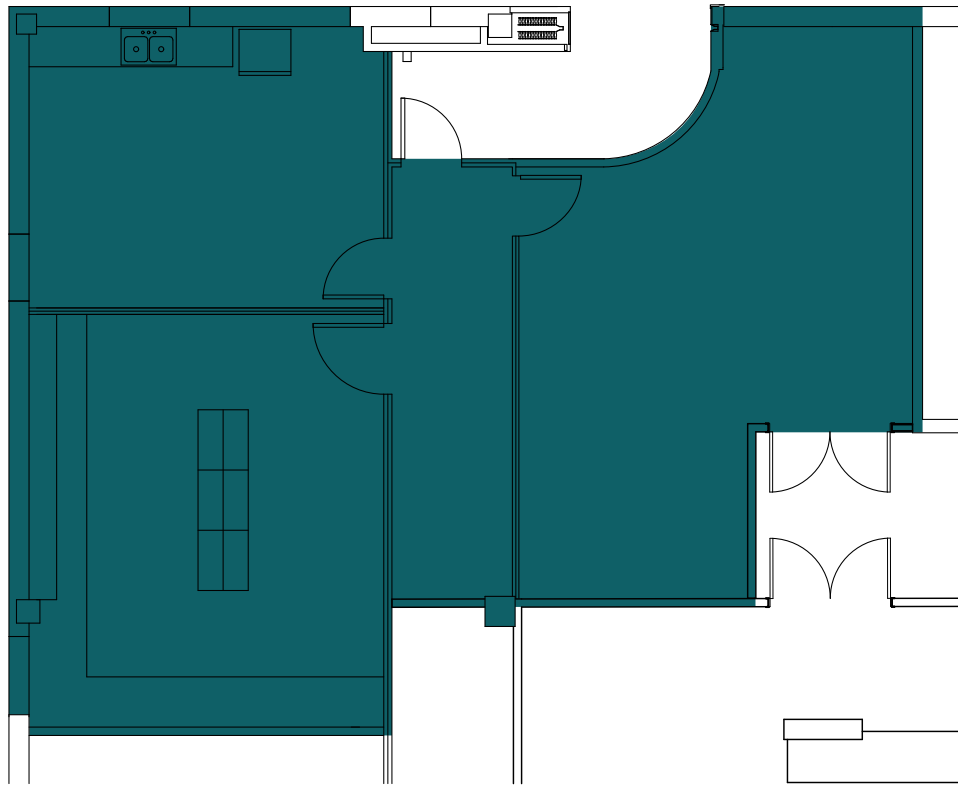
SUITE 140 | 13,004 SF



KEY PLAN

1ST FLOOR

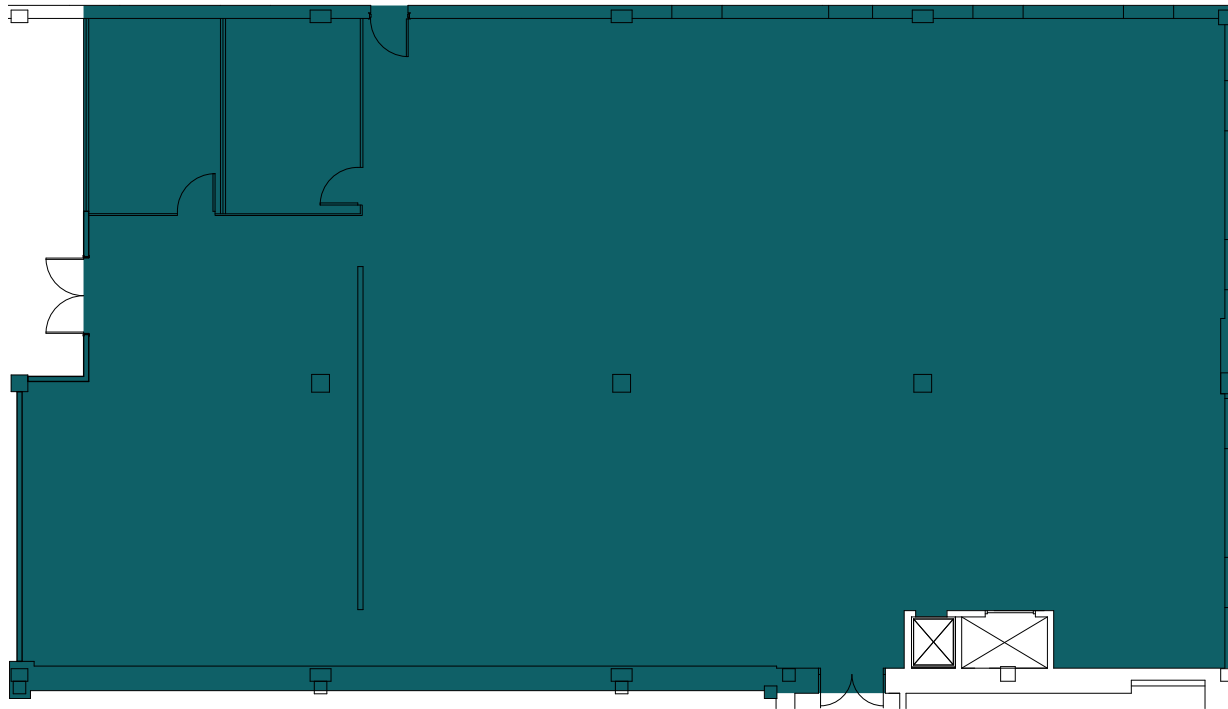
SUITE 165 | 1,371 SF



KEY PLAN

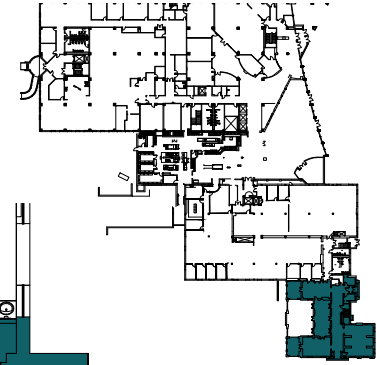
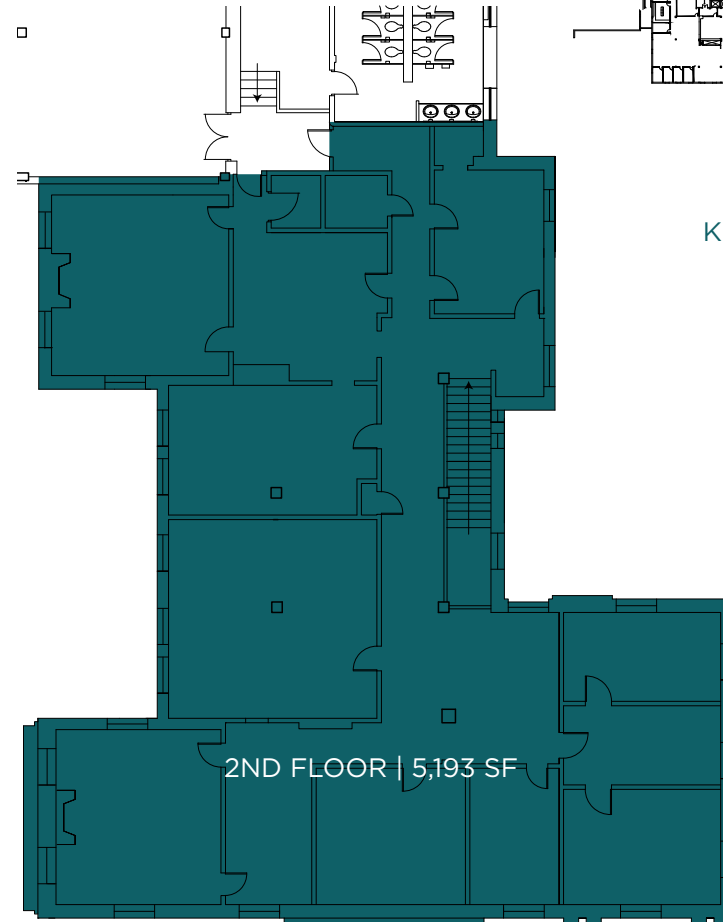
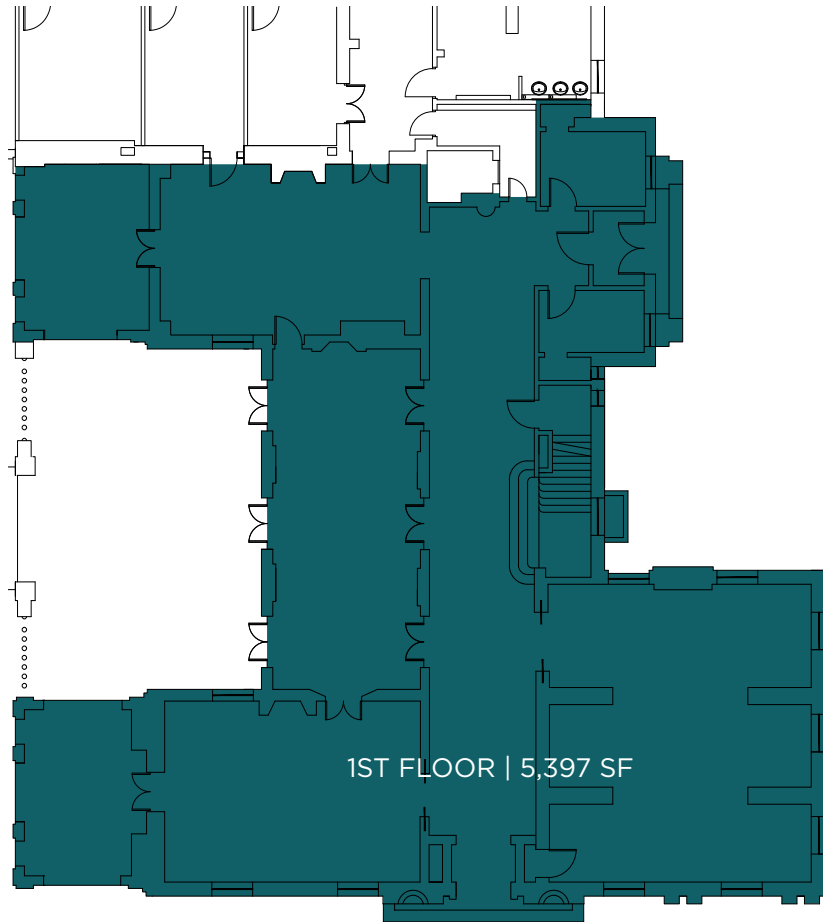
1ST FLOOR

SUITE 180 | 5,547 SF



KEY PLAN

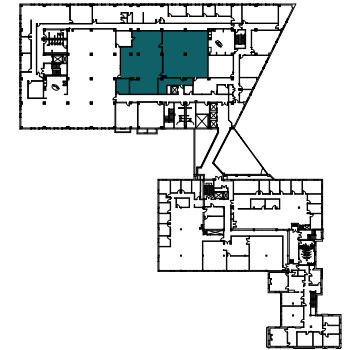
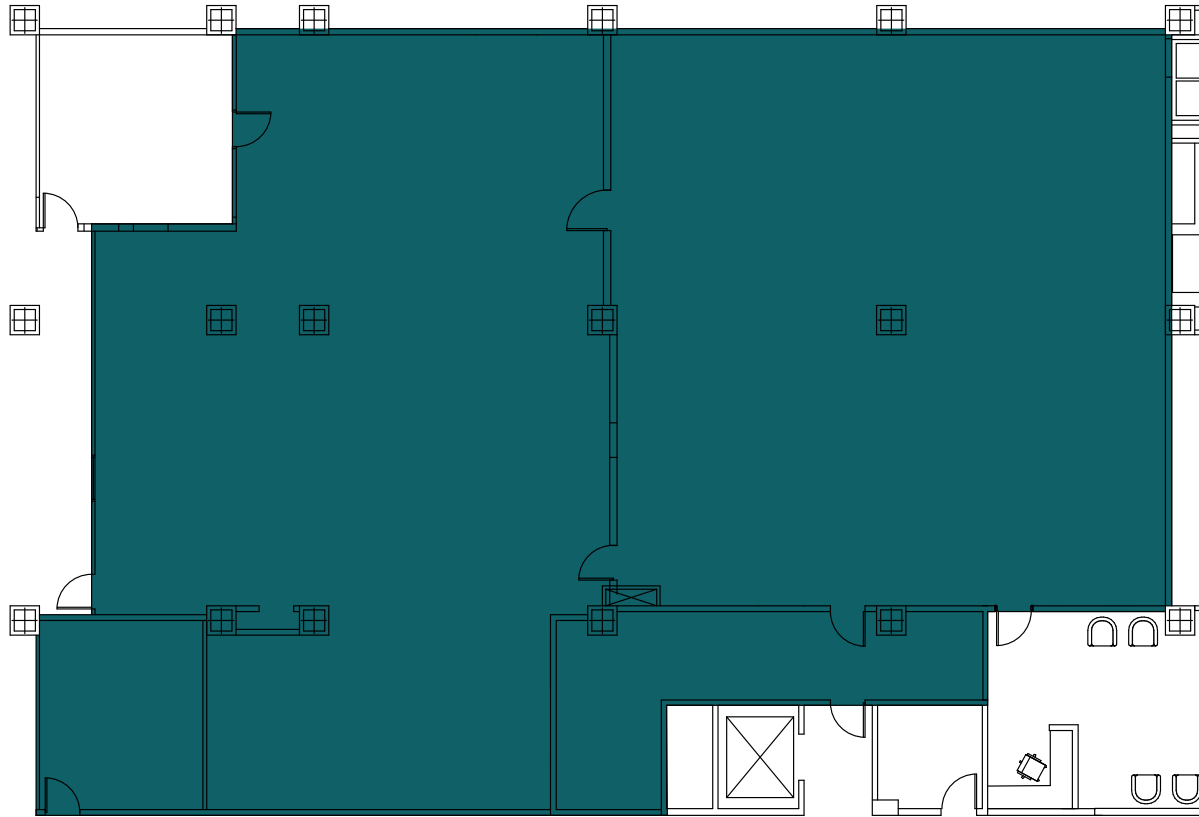
SUITE 190



KEY PLAN

2ND FLOOR

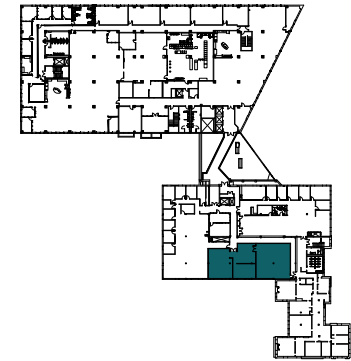
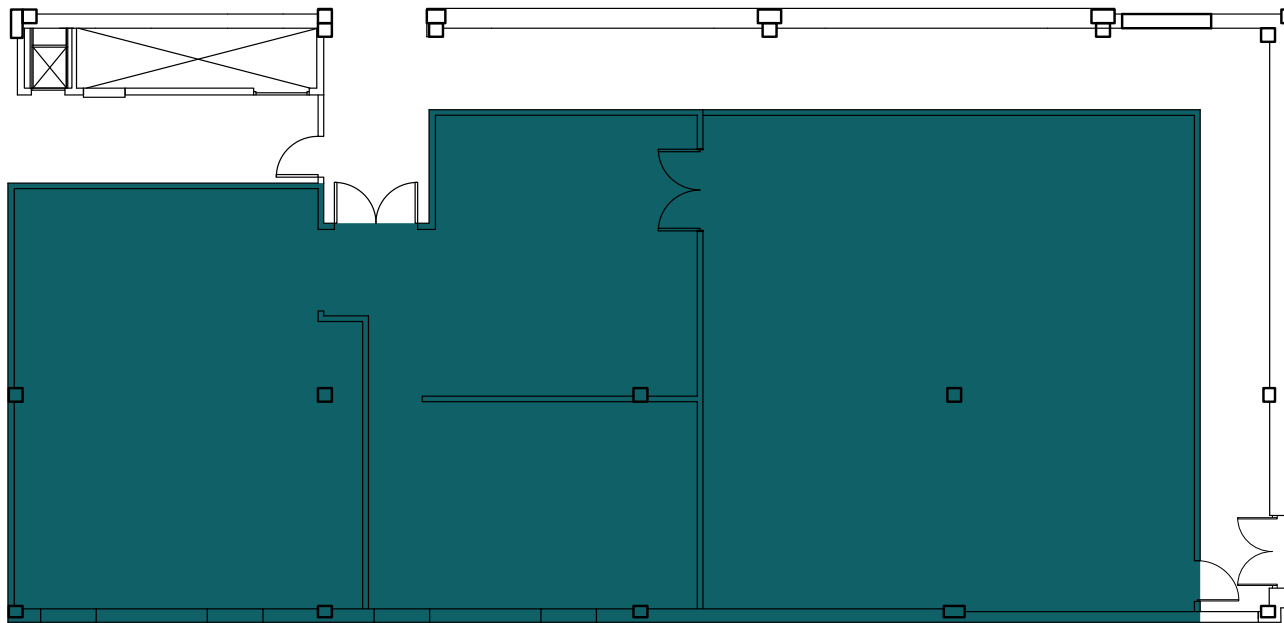
SUITE 240 | 6,432 SF



KEY PLAN

2ND FLOOR

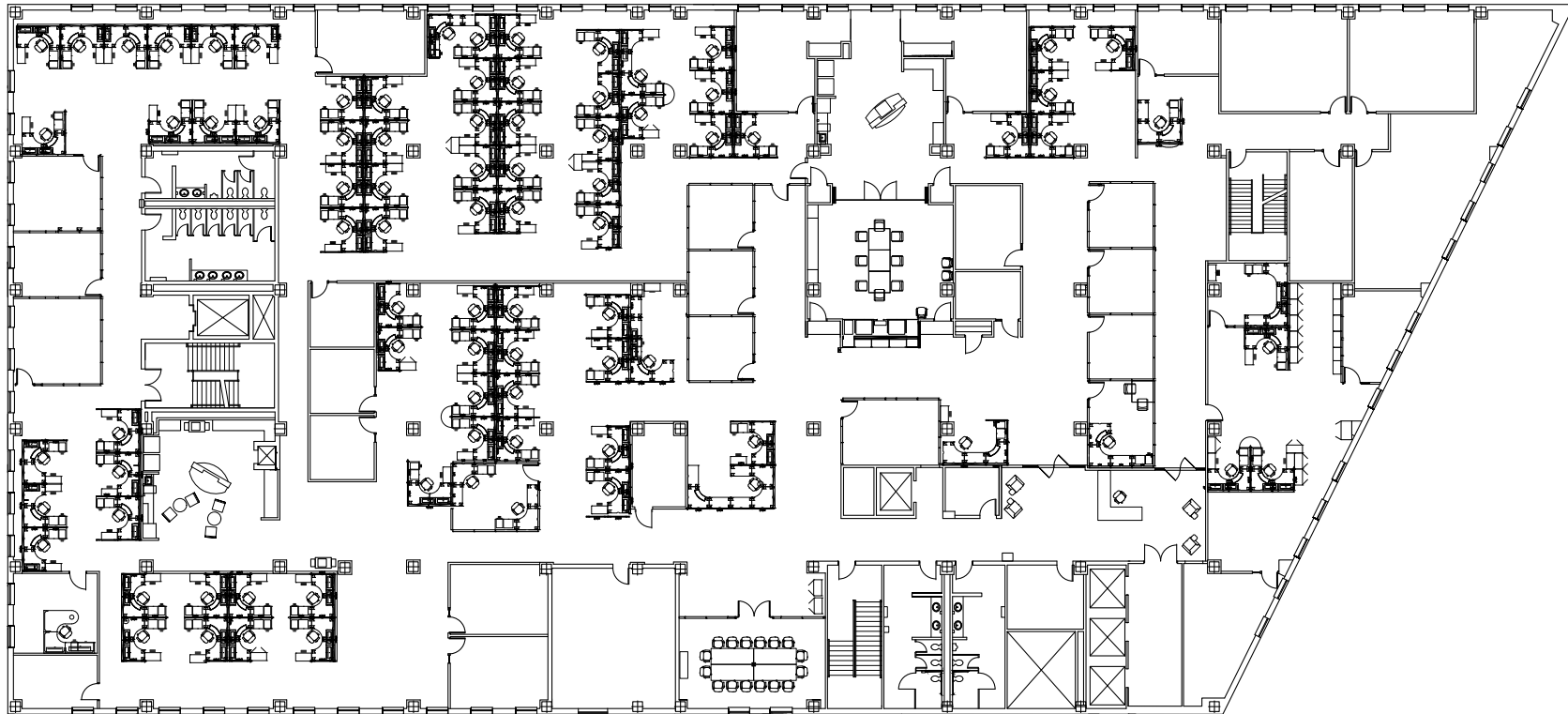
SUITE 280 | 3,387 SF



KEY PLAN

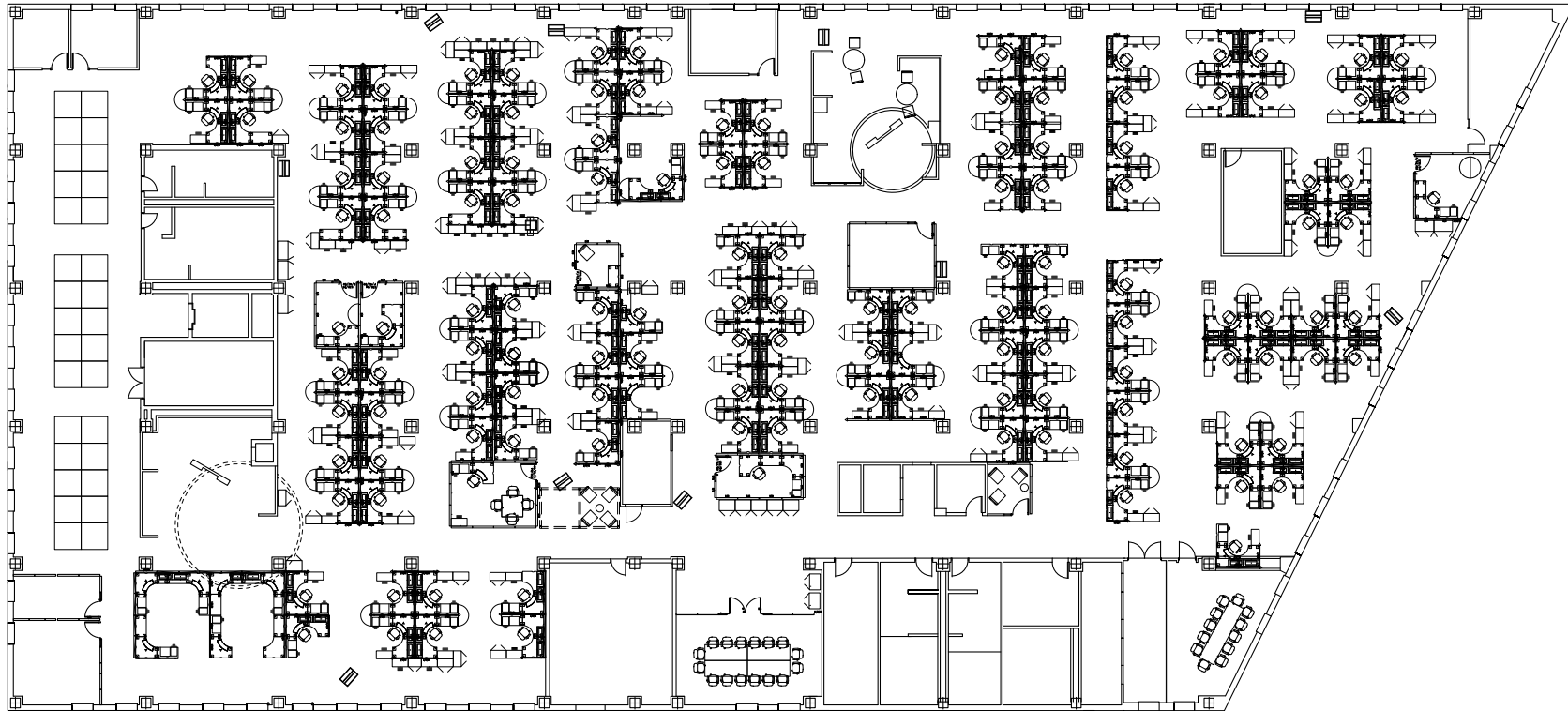
3RD FLOOR

FULL FLOOR | 33,679 SF



4TH FLOOR

FULL FLOOR | 33,679 SF



2902 NORTH MERIDIAN STREET

HISTORIC LEVEY MANSION

Set at the prestigious corner of Meridian and 29th Streets in downtown Indianapolis, Levey Mansion is a historic, two-story Italian Renaissance style limestone building that highlights the city's Historic Meridan Park neighborhood. The renowned Indianapolis mansion was converted for commercial use in the 1950s, earned a spot on the National Register of Historic Places in 1978, and today offers one of the city's most unique office opportunities.

PROPERTY HIGHLIGHTS

Total Available Space: 6,828 SF

\$17.50/SF Full Service

On the National Register of Historic Places

2-story limestone building

Meticulously maintained historic building

Access to conference room, fitness and food service amenities in the 2960 building



Levey Mansion

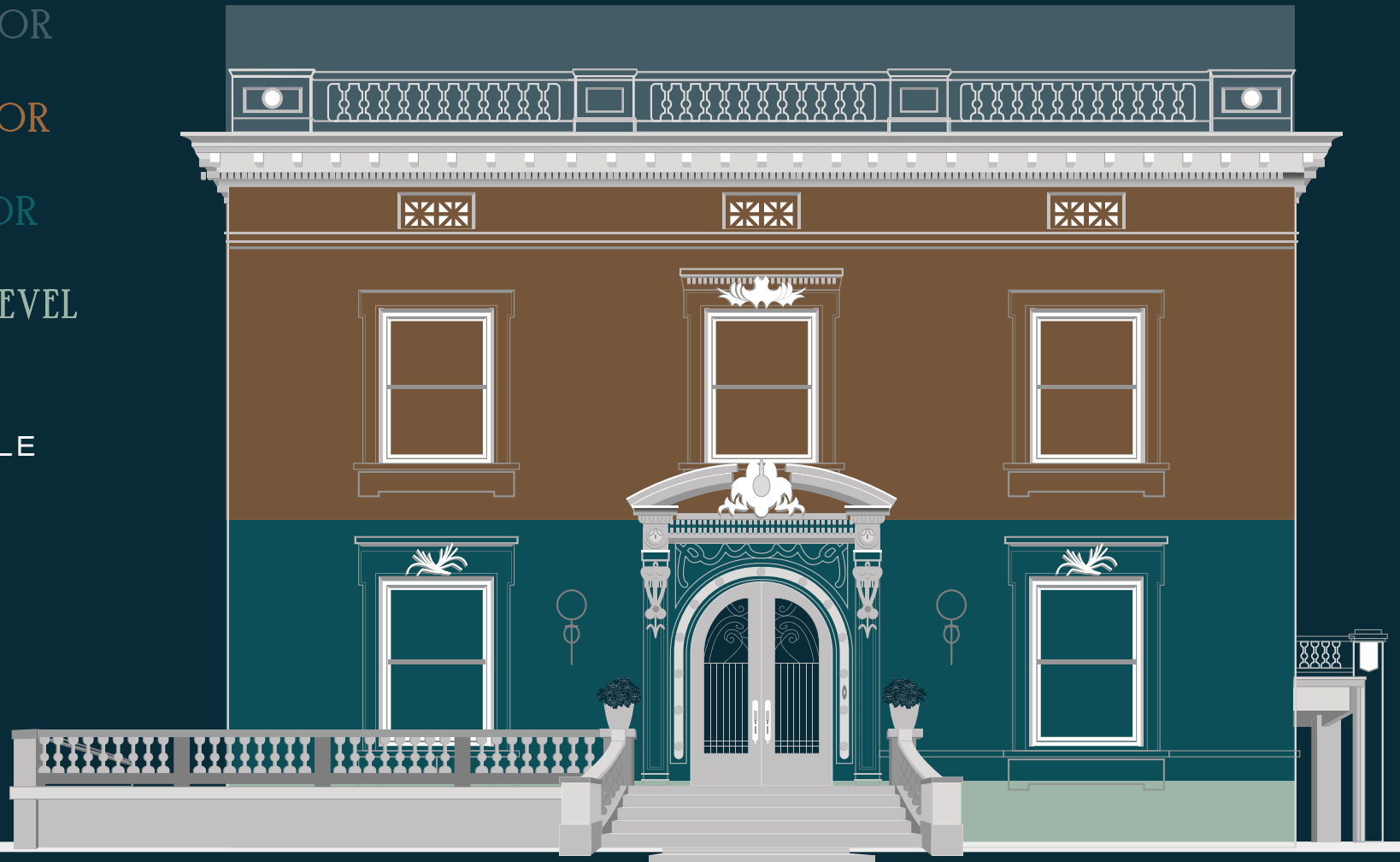
3RD FLOOR

2ND FLOOR

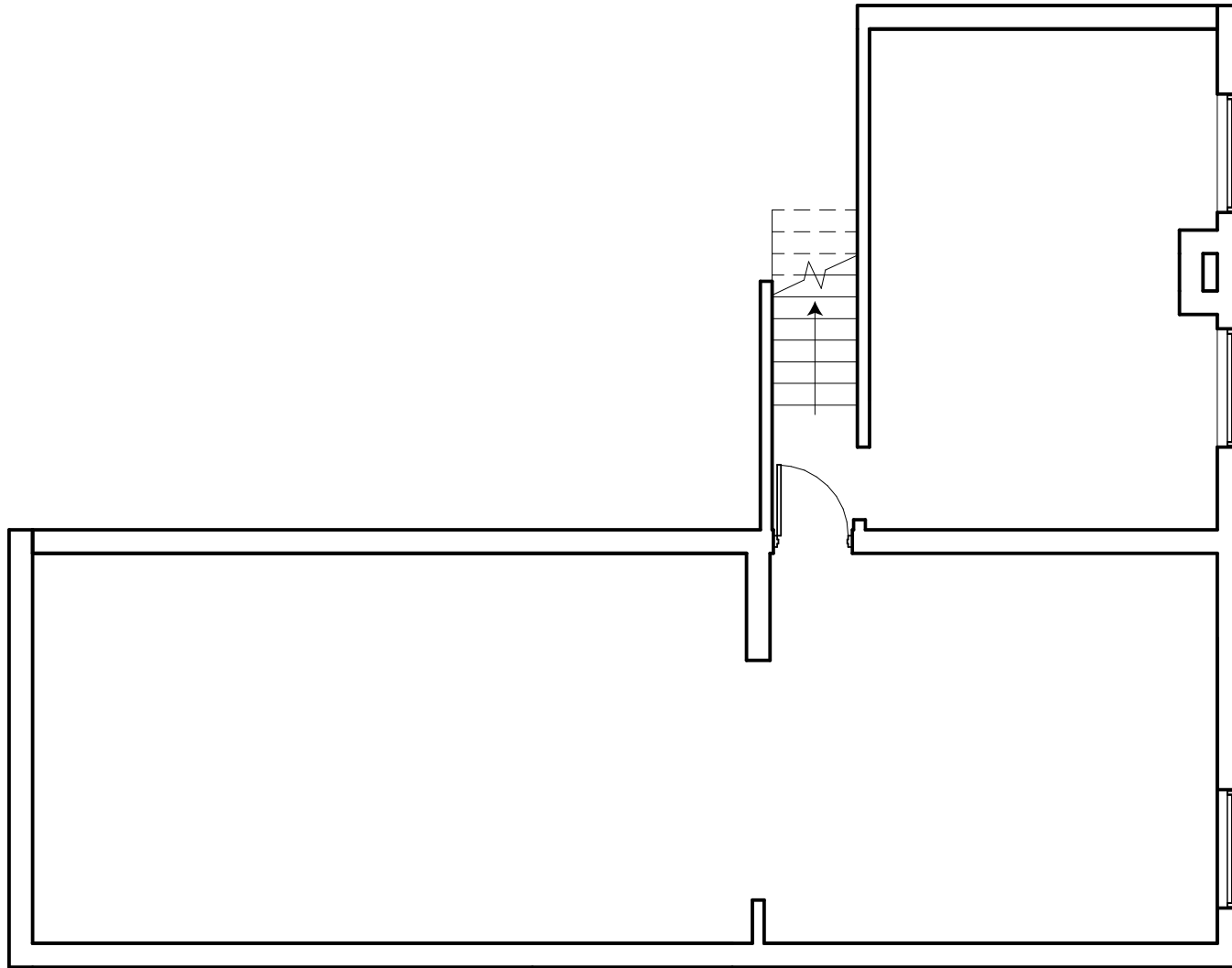
1ST FLOOR

LOWER LEVEL

6,828 SF
AVAILABLE

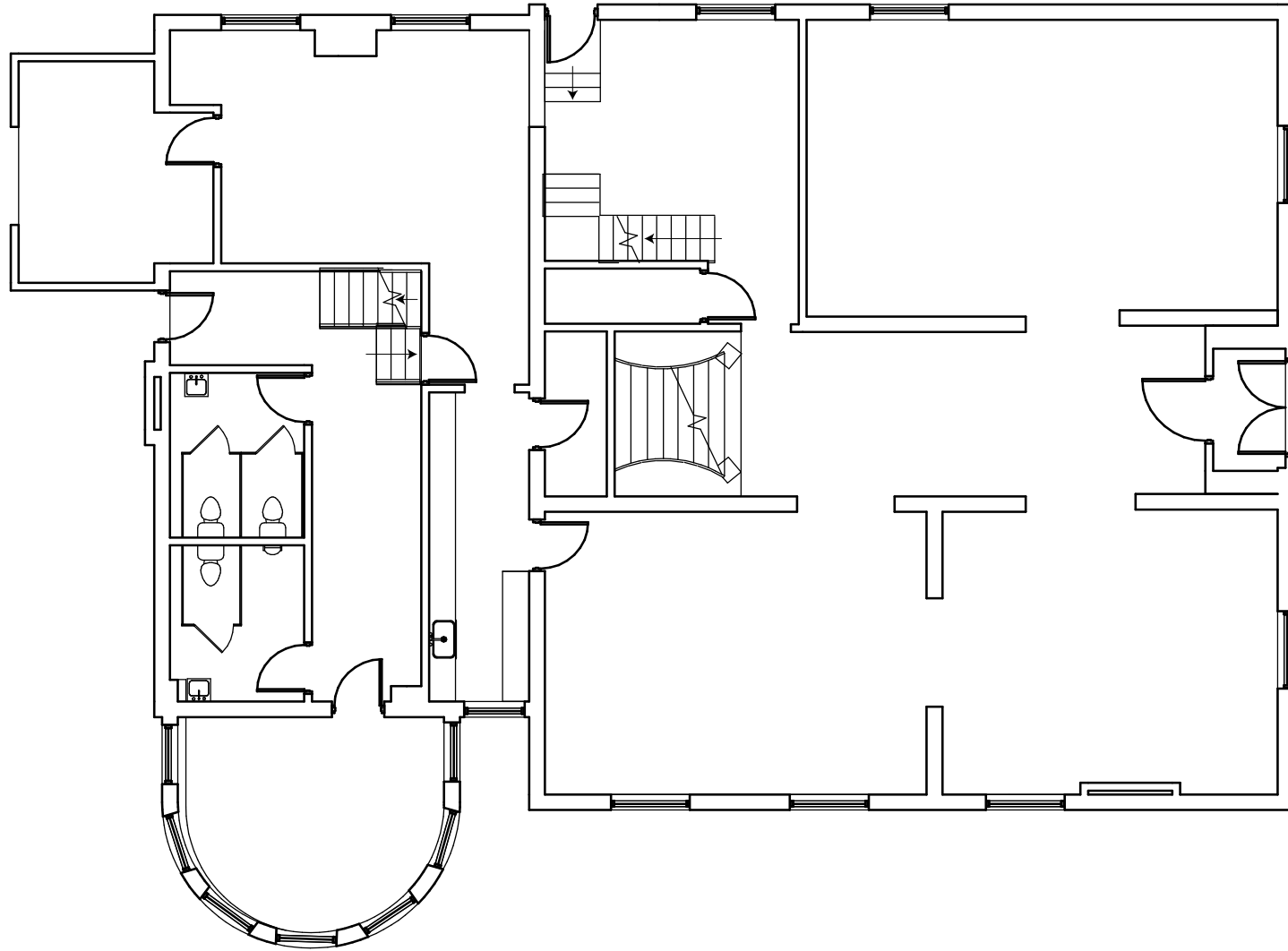


LOWER LEVEL

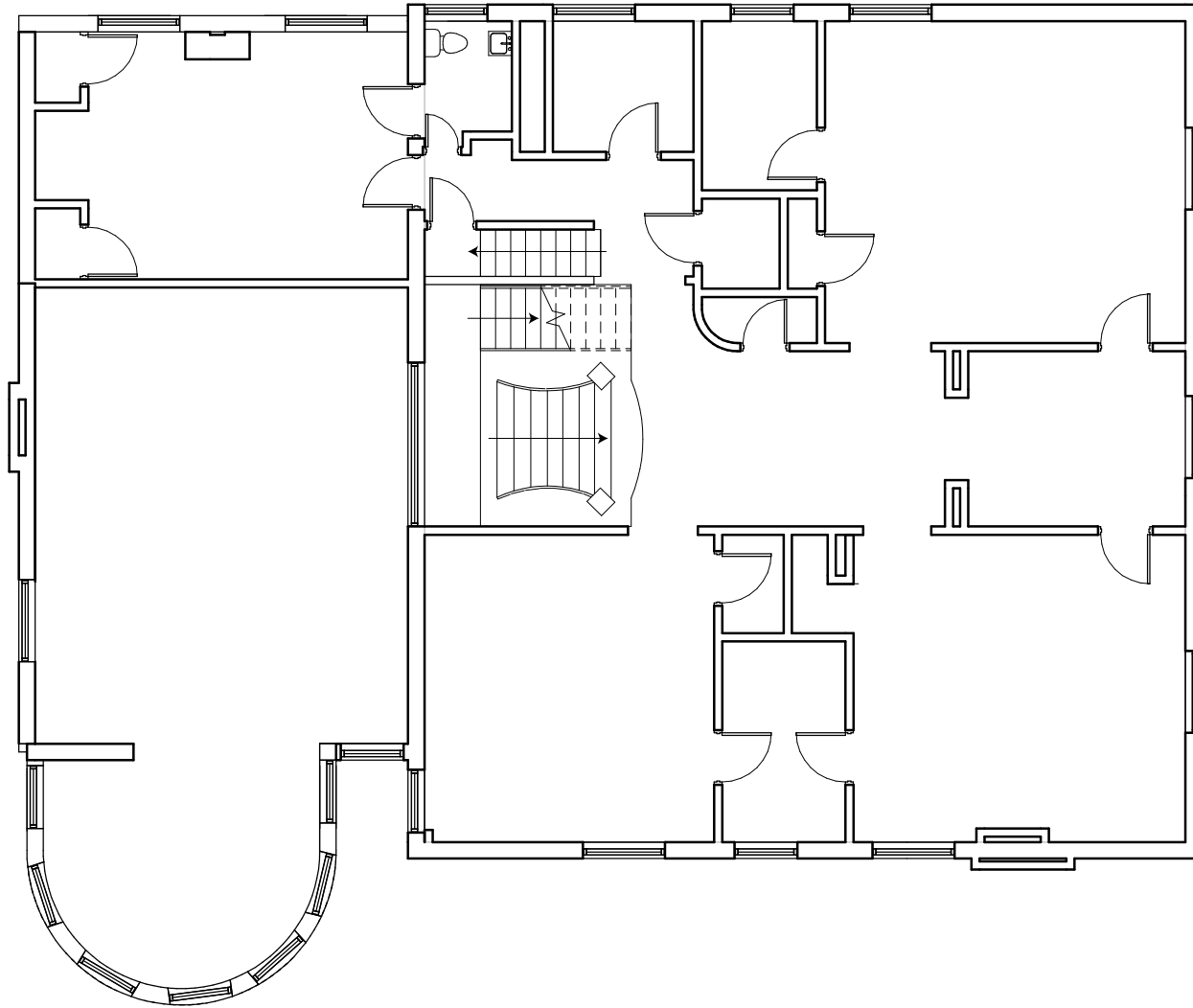


B

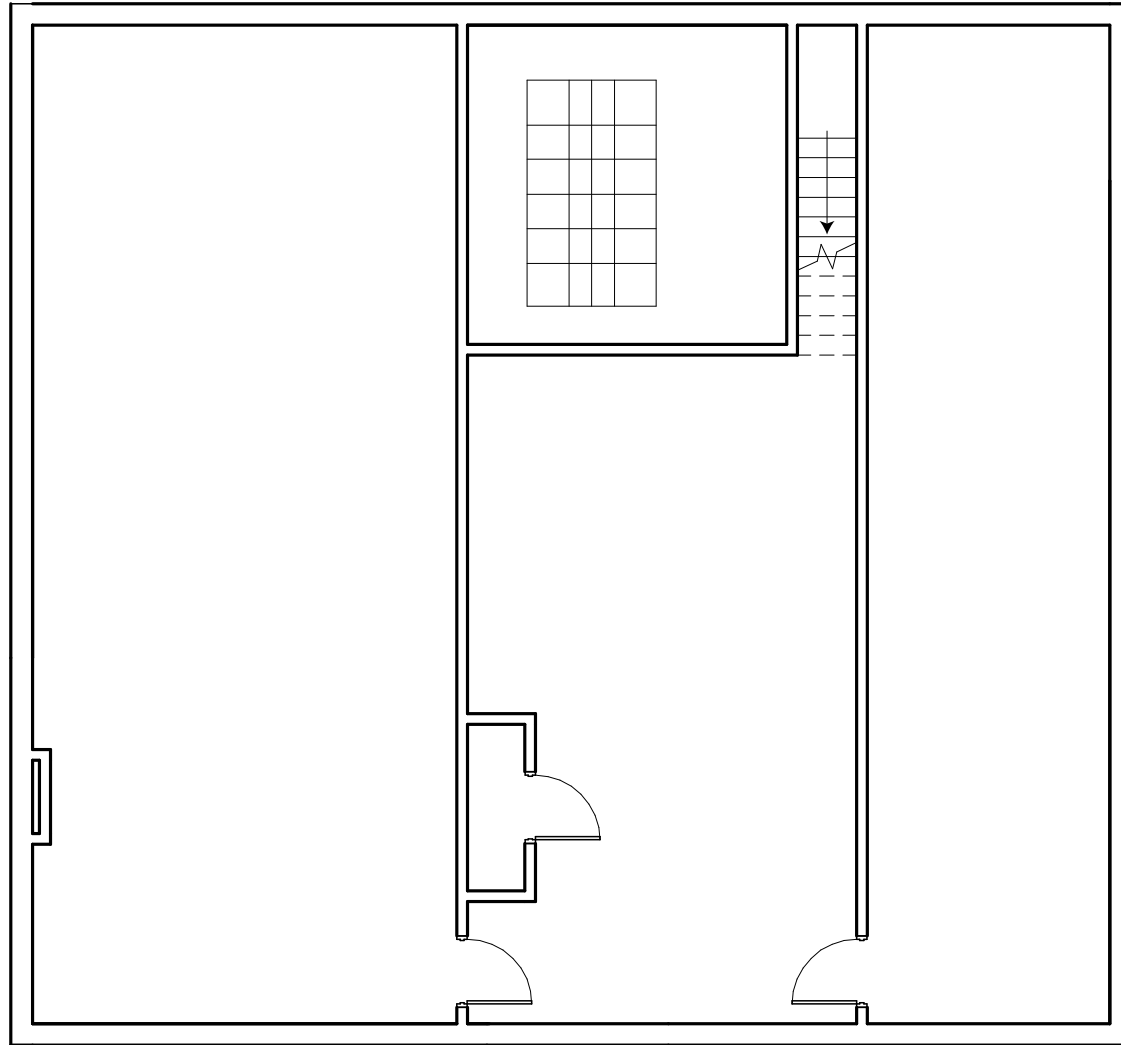
1ST FLOOR



2ND FLOOR



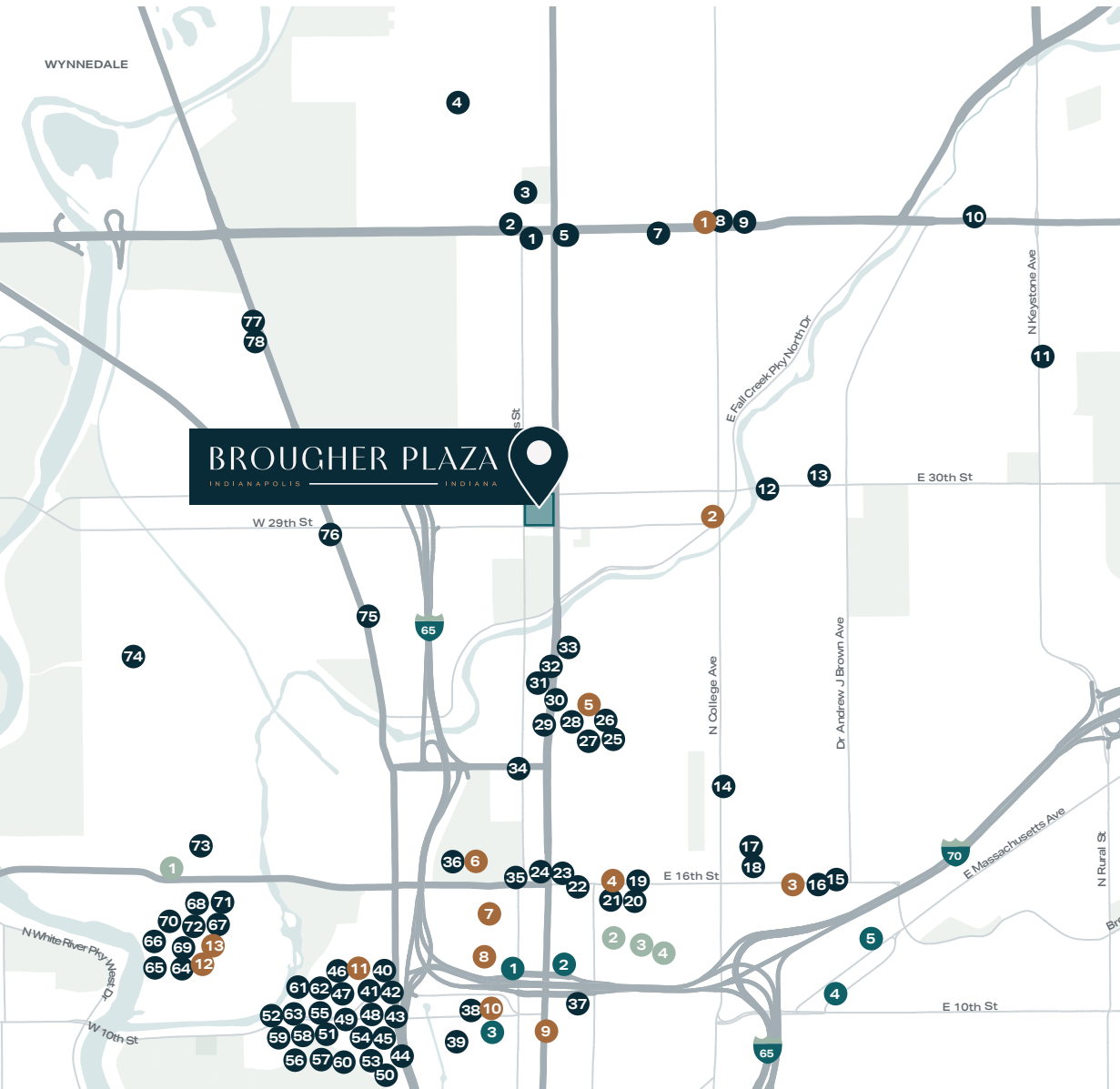
3RD FLOOR



B



EXPLORE HISTORIC MERIDIAN PARK



RESTAURANTS

- | | |
|-------------------------------------|-------------------------------------|
| 1. McDonald's | 41. Jimmy John's |
| 2. Subway | 42. Lincoln Square Pancake House |
| 3. Tea's Me Community Café | 43. Pizza Hut |
| 4. Hoagies and Hops | 44. City Barbeque |
| 5. China King | 45. Tropical Smoothie Café |
| 6. Big City Grill | 46. Panda Express |
| 7. Domino's Pizza | 47. Hardee's |
| 8. Rally's | 48. Arby's |
| 9. Taqueria La Chela | 49. Sushi Boss |
| 10. Taqueria Belinda | 50. Parlor Doughnuts |
| 11. Chef Oya's | 51. Donatos Pizza |
| 12. Bar-B-Q Heaven | 52. Taco Bell |
| 13. Monon 30 | 53. Naf Naf Grill |
| 14. Pure-Triton | 54. Insomnia Cookies |
| 15. Greek's Pizzeria | 55. Blaze Pizza |
| 16. Festiva | 56. Subway |
| 17. Scarlet Lane Brewing | 57. QDOBA |
| 18. West Fork Whiskey | 58. Noodles and Company |
| 19. Tinker Street | 59. Delhi Palace |
| 20. Gallery on 16th | 60. Bento Asian Bistro |
| 21. Gregs Indy | 61. Ali'l Poke |
| 22. LiftOff Creamery | 62. Toppers Pizza |
| 23. Isuka Hibachi Express | 63. Moe's Southwest Grill |
| 24. McDonald's | 64. Healthy Soul |
| 25. MashCraft on Delaware | 65. Prox Salads |
| 26. Loco Mexican Restaurant | 66. Pinkin Pies |
| 27. Baby's | 67. Circle City Sweets |
| 28. Bocca | 68. Vic's BBQ |
| 29. Gather 22 | 69. Poke Guru |
| 30. Wendy's | 70. Caplinger's Fresh Catch Seafood |
| 31. Lincoln Square Pancake House | 71. Mambo's at The Amp |
| 32. Jimmy John's | 72. Taste of Innova |
| 33. KFC | 73. Guggman Haus Brewing Co |
| 34. Jordans Fish, Chicken, & Gyro's | 74. Good Vegan Bad Vegan |
| 35. White Castle | 75. Bar-B-Q Heaven |
| 36. Au Bon Pain | 76. Bab's Steak |
| 37. Plantastic Indy | 77. Dairy Queen |
| 38. Turner's Bar | 78. Hank's Smoked Brisket |
| 39. Black Leaf Vegan Café | |
| 40. Chipotle | |

COFFEE SHOPS

1. Blue Mind Coffee
2. Command Coffee
3. Provider Coffee
4. Foundry Provisions
5. Tea's Me Community Café
6. Copper Moon Coffee
7. Starbucks
8. Starbucks
9. Quills Coffee
10. Barista Parlor Stutz
11. Starbucks
12. Tinker Coffee
13. Boba&Everything

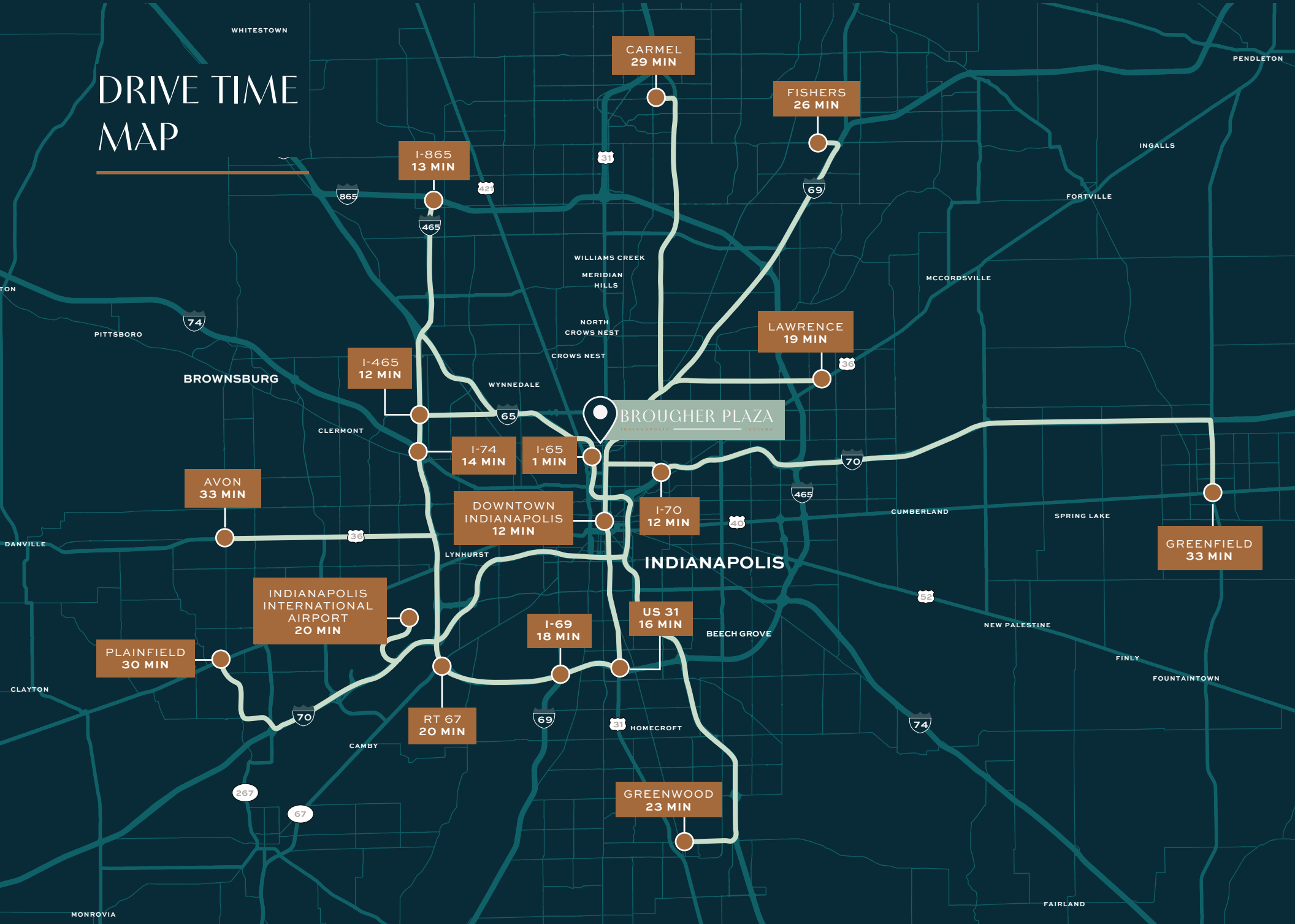
FITNESS

1. Circle City Martial Arts & Fitness
2. Transformation Fitness and Wellness
3. Myriad Health + Fitness
4. Day Won Fitness
5. North Mass Boulder

HOTELS

1. Sleep Inn & Suites
2. Old Northside Bed & Breakfast
3. The Looking Glass Inn
4. Stone Soup Inn

DRIVE TIME MAP



BROUGHER PLAZA

INDIANAPOLIS ————— INDIANA

FOR MORE LEASING INFORMATION ON BROUGHER PLAZA, PLEASE CONTACT:

JON R. OWENS, SIOR
Managing Director
+1 317 639 0447
jon.owens@cushwake.com

JOSHUA GRAHAM
Director
+1 317 639 0491
joshua.graham@cushwake.com



©2023 Cushman & Wakefield. All rights reserved. The information contained in this communication is strictly confidential. This information has been obtained from sources believed to be reliable but has not been verified. NO WARRANTY OR REPRESENTATION, EXPRESS OR IMPLIED, IS MADE AS TO THE CONDITION OF THE PROPERTY (OR PROPERTIES) REFERENCED HEREIN OR AS TO THE ACCURACY OR COMPLETENESS OF THE INFORMATION CONTAINED HEREIN, AND SAME IS SUBMITTED SUBJECT TO ERRORS, OMISSIONS, CHANGE OF PRICE, RENTAL OR OTHER CONDITIONS, WITHDRAWAL WITHOUT NOTICE, AND TO ANY SPECIAL LISTING CONDITIONS IMPOSED BY THE PROPERTY OWNER(S). ANY PROJECTIONS, OPINIONS OR ESTIMATES ARE SUBJECT TO UNCERTAINTY AND DO NOT SIGNIFY CURRENT OR FUTURE PROPERTY PERFORMANCE. COE-PM-CENTRAL