

FOR SUBLEASE

TOWSON COMMONS

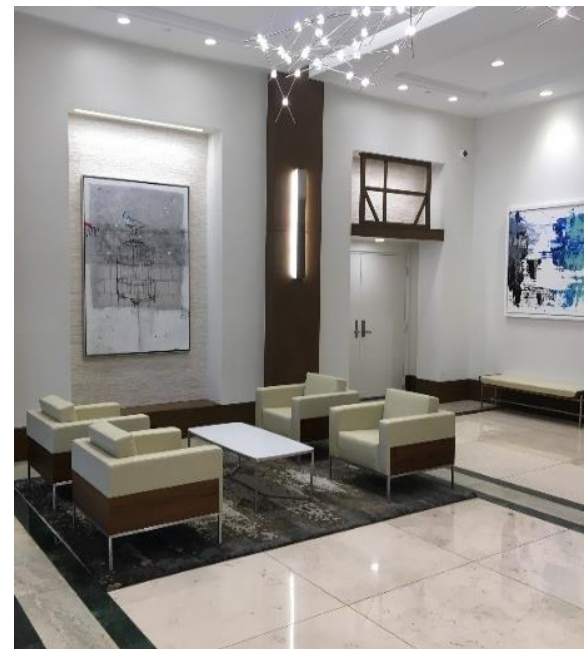
1 W Pennsylvania Avenue, Towson, MD



25,000 SF OF HIGHLY FINISHED SUBLEASE SPACE AVAILABLE FOR SUBLEASE IN HEART OF TOWSON

PROPERTY HIGHLIGHTS

- Approximately 25,000 SF comprising the entire 4th floor available – Additional direct lease availability, could accommodate 50,000 SF
- Subdivisible to 12,000 SF
- Highly finished space with extensive glass and views
- Potential Plug & Play/Furniture could be available
- Space comes with 4/1000 parking spaces in the adjacent covered parking garage, included in the rent
- Five (5) year sublease term through May 31, 2024
- Newly renovated lobby
- Access to food service, and other amenities



Building Lobby

CHARLIE FENWICK

Managing Director

+1 410 953 6693

charles.fenwick@cushwake.com

DOUG BRINKLEY

Managing Director

+1 410 347 1140

douglas.brinkley@cushwake.com



**CUSHMAN &
WAKEFIELD**

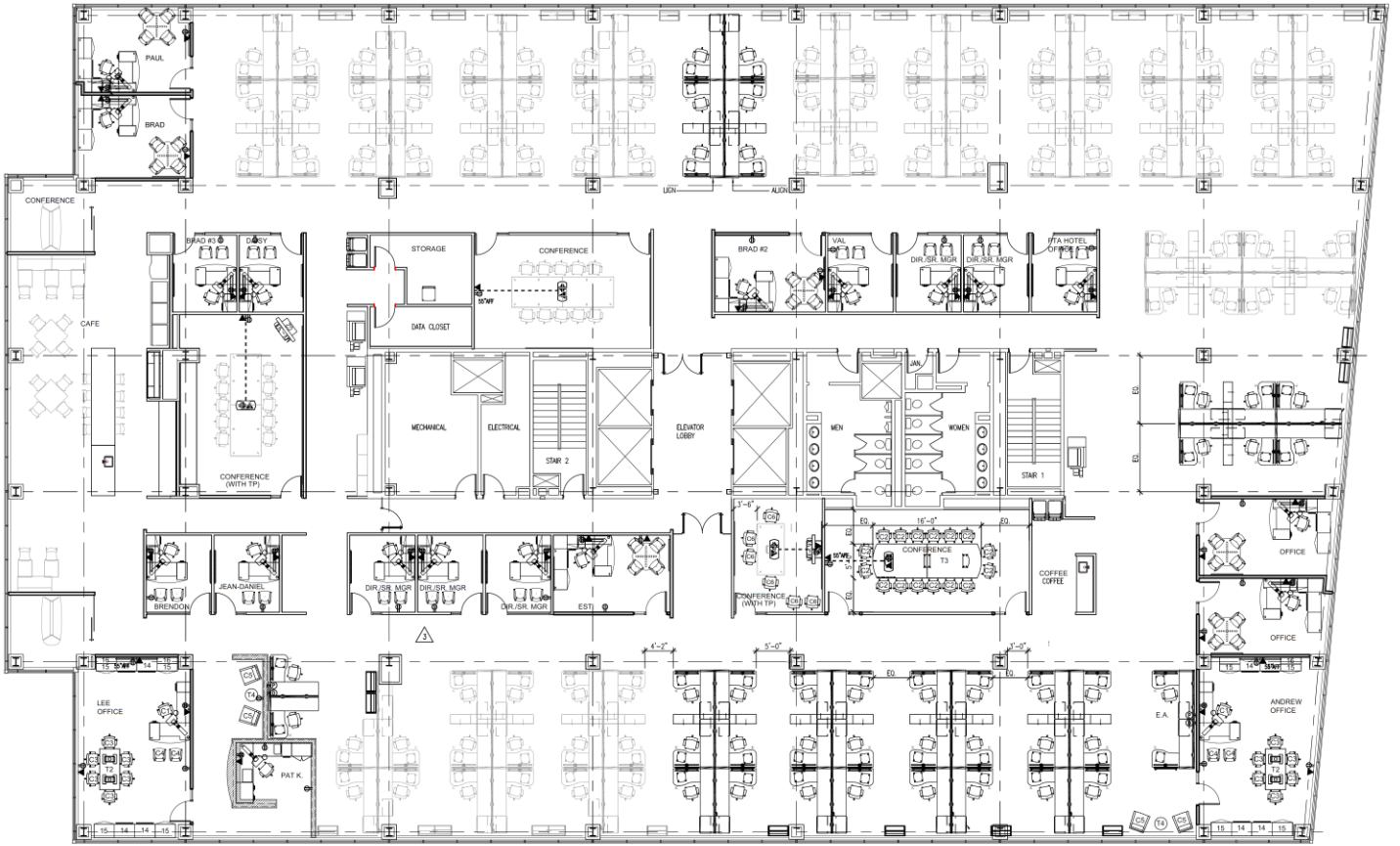
cushmanwakefield.com

TOWSON COMMONS

1 W Pennsylvania Avenue, Towson, MD

FOR SUBLEASE

4th FLOOR PLAN 24,735 SF AVAILABLE



CHARLIE FENWICK
 Managing Director
 +1 410 953 6693
 charles.fenwick@cushwake.com

DOUG BRINKLEY
 Managing Director
 +1 410 347 1140
 douglas.brinkely@cushwake.com

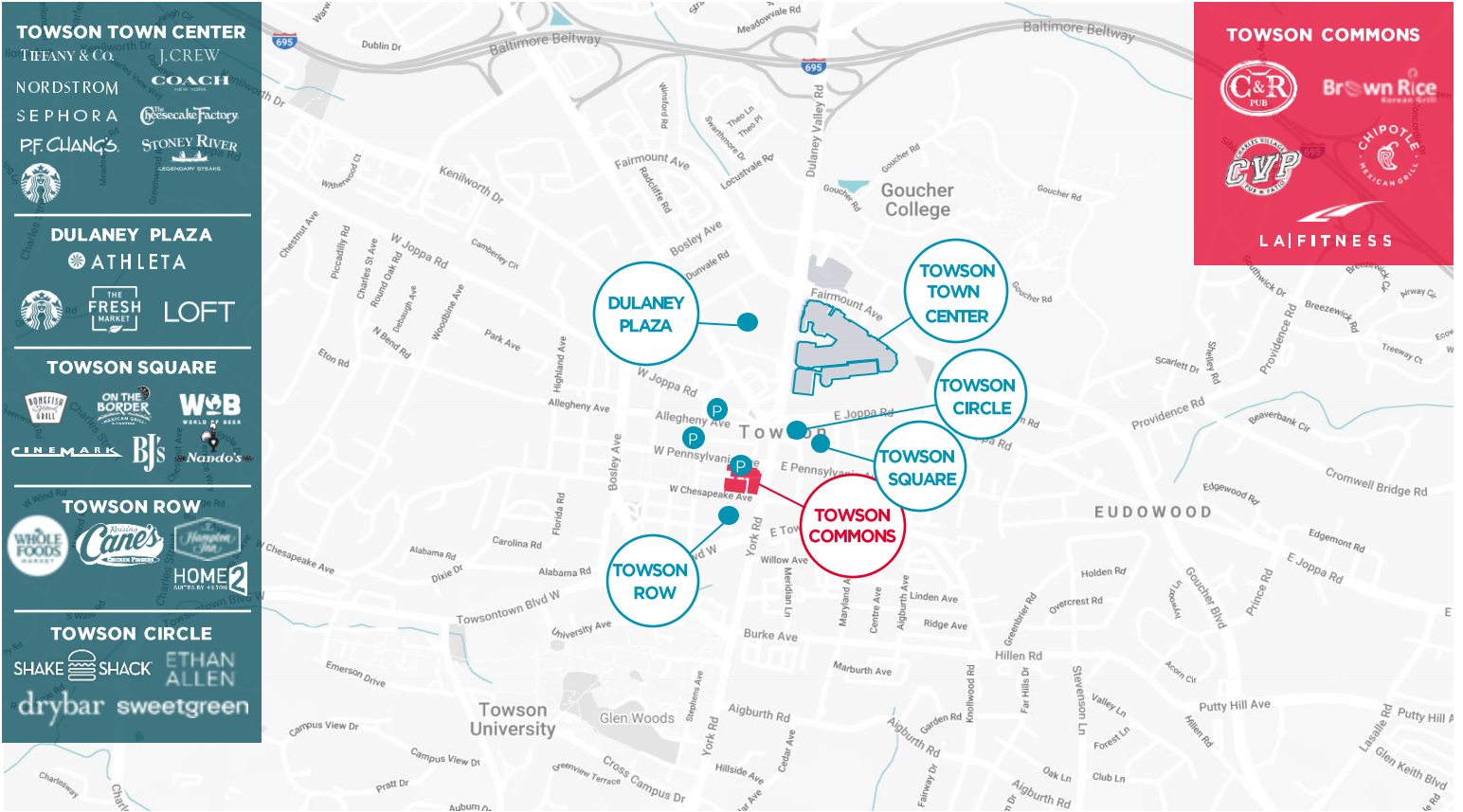


TOWSON COMMONS

1 W Pennsylvania Avenue, Towson, MD

FOR SUBLEASE

AMENITIES MAP



Towson Commons is located in the heart of Towson, MD, less than a mile south of the Baltimore Beltway (I-695) and just 8 miles north of downtown Baltimore.



Break Room



Open Workstations



Training Room

CHARLIE FENWICK

Managing Director

+1 410 953 6693

charles.fenwick@cushwake.com

DOUG BRINKLEY

Managing Director

+1 410 347 1140

douglas.brinkley@cushwake.com



CUSHMAN & WAKEFIELD

cushmanwakefield.com