

10G

10 G Street, NE

122,227 SF

Available Immediately
1/2 BLOCK FROM UNION STATION

10G

10 G Street, NE



BUILDING FEATURES

1/2 Block from Union Station,
Shops and Metro (Red Line)

•
Large Rooftop Terrace & Fitness Center

•
24-Hour Security

•
LEED Platinum Certified

Suite 100: 21,954 RSF (Sublease or Prime)

Suite 200: 31,021 RSF (Sublease or Prime)

Suite 300: 34,792 RSF (Sublease or Prime)

Suite 420: 4,079 RSF (Sublease or Prime)

Suite 450: 5,897 RSF (Sublease or Prime)

Suite 430: 6,160 SF (Prime)

Suite 500: Approx. 15,000 SF (Prime)

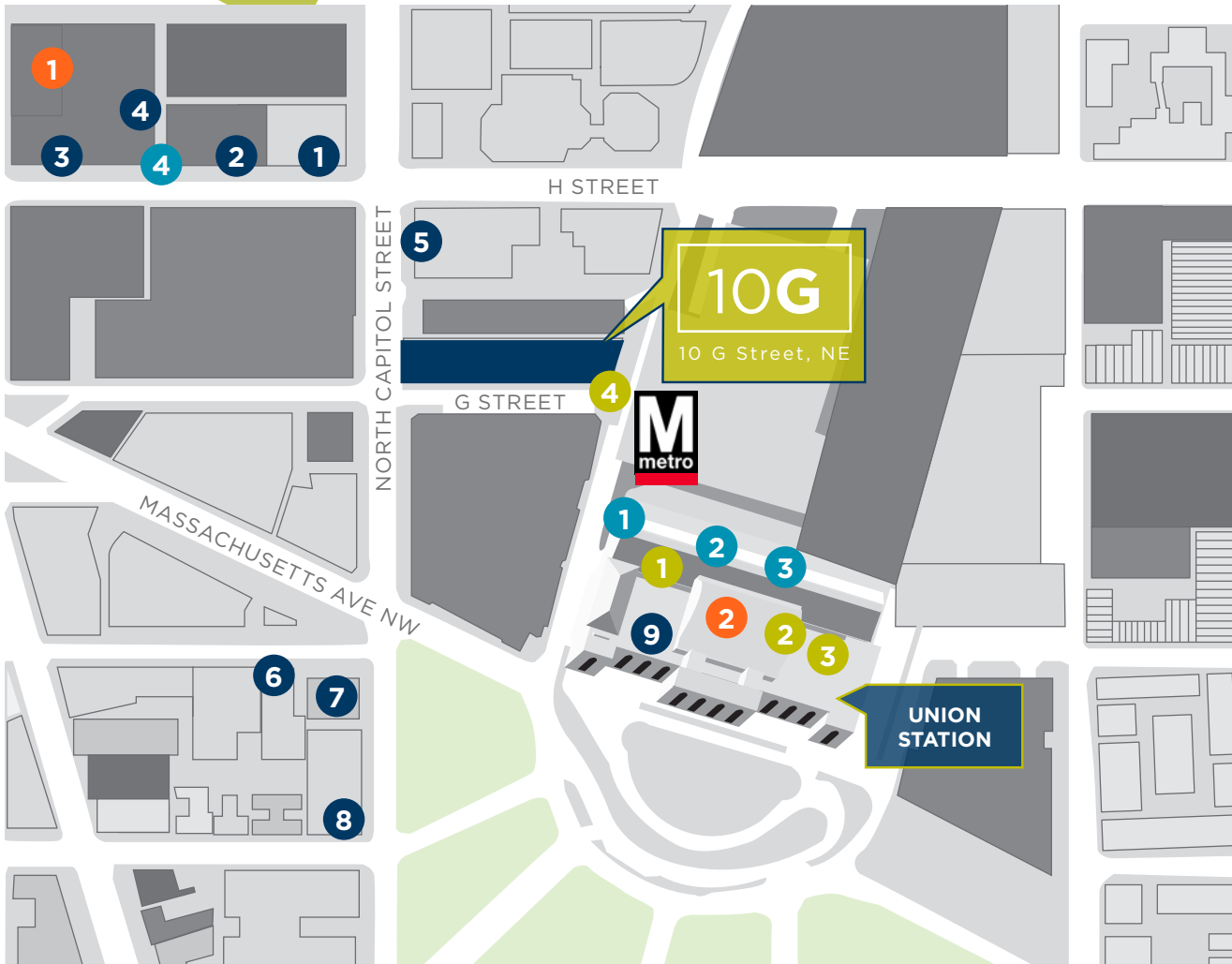
Suite 620: 3,324 RSF (Sublease or Prime)



10G

10 G Street, NE

AMENITY MAP



RESTAURANTS

- 1 Au Bon Pain
- 2 Subway
- 3 Starbucks
- 4 Chicken Rico
- 5 Lucky's Cafe
- 6 Kelly's Irish Times
- 7 The Dubliner
- 8 Corner Bakery
- 9 Union Station Restaurants:
 - Chick-fil-A
 - Cava
 - Chop't
 - Shake Shack
 - Aloha Poke
 - Pret a Manger
 - Pot Belly
 - +30 more

SHOPPING

- 1 Wal-Mart
- 2 Union Station Shopping:
 - H&M
 - USPS
 - The Body Shop
 - MAC Cosmetics
 - Ann Taylor
 - Jos. A Bank
 - Heydari
 - Walgreens
 - Western Union
 - Andrew's Ties
 - Victoria's Secret

BANKS

- 1 Citibank (ATM)
- 2 SunTrust (ATM)
- 3 Bank of America (ATM)
- 4 Capitol One (ATM)

TRANSPORTATION

- 1 Metro Red Line
- 2 Amtrak
- 3 MARC
- 4 Capital Bikeshare

10G

10 G Street, NE

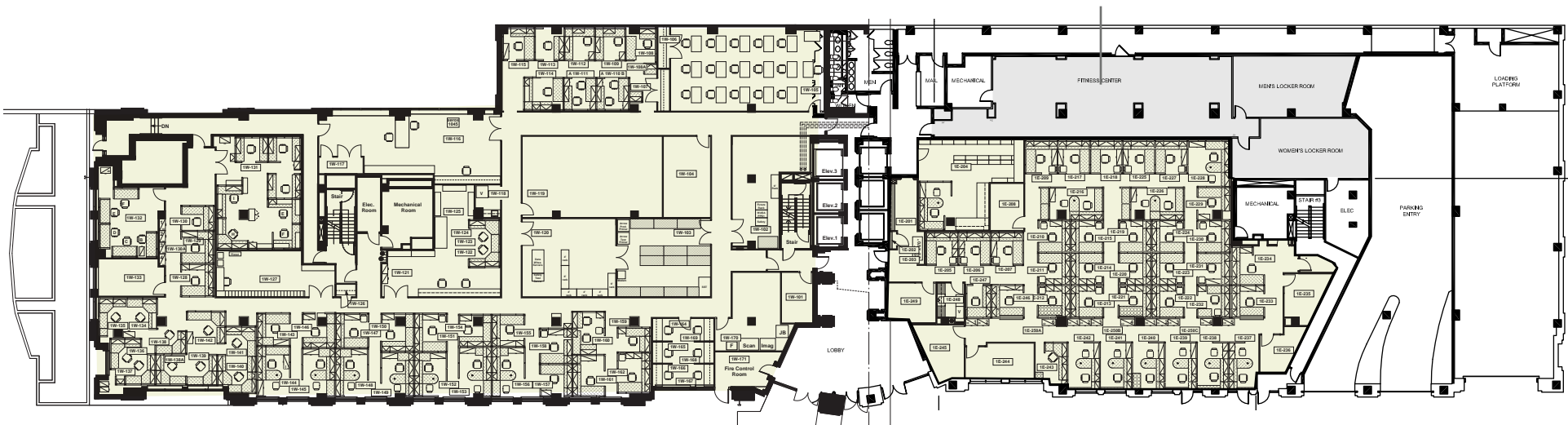
FLOOR PLANS

Suite 100: 21,954 RSF

AMTRAK SUBLET THROUGH 12/31/2024 | \$25.00/SF FULL SERVICE

AVAILABLE PRIME SPACE | \$45.00/SF FULL SERVICE

FITNESS CENTER & LOCKER ROOMS



FOR PRIME SPACE CONTACT:

KURT RICHTER | +1 202 266 1158
kurt.richter@cushwake.com

FOR SUBLEASE SPACE CONTACT:

BILL QUINBY | +1 202 624 8551
BQuinby@savills.us

DAVID CORNBROOKS | +1 202 624 8549
DCornbrooks@savills.us

TIM FOLEY | +1 202 624 8543
TFoley@savills.us

10G

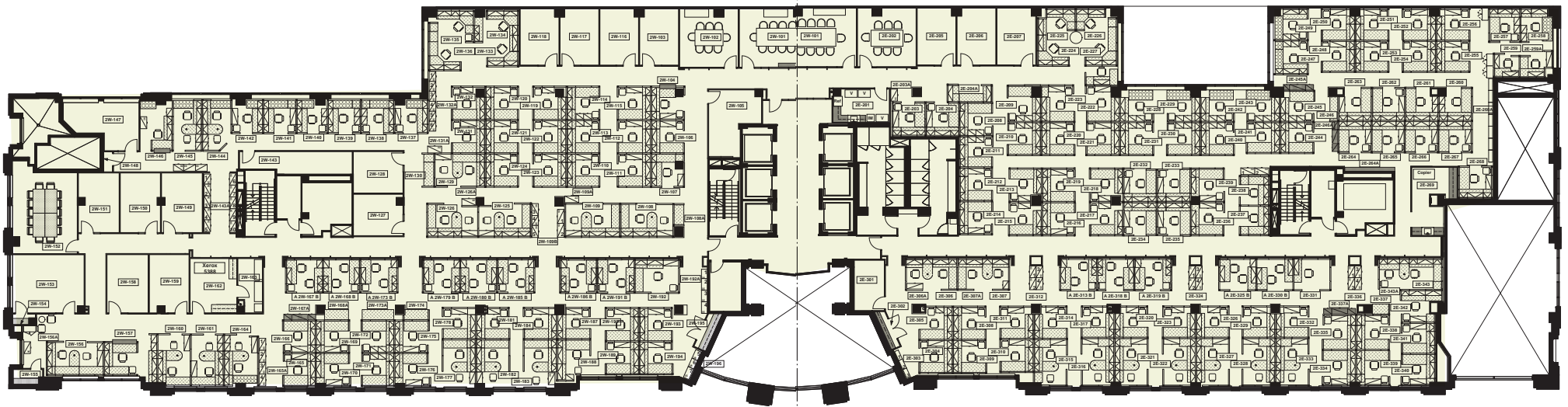
10 G Street, NE

FLOOR PLANS

Suite 200: 31,021 RSF

AMTRAK SUBLET THROUGH 12/31/2024 | \$25.00/SF FULL SERVICE

AVAILABLE PRIME SPACE | \$45.00/SF FULL SERVICE



FOR PRIME SPACE CONTACT:

KURT RICHTER | +1 202 266 1158
kurt.richter@cushwake.com

FOR SUBLEASE SPACE CONTACT:

BILL QUINBY | +1 202 624 8551
BQuinby@savills.us

DAVID CORNBROOKS | +1 202 624 8549
DCornbrooks@savills.us

TIM FOLEY | +1 202 624 8543
TFoley@savills.us

10G

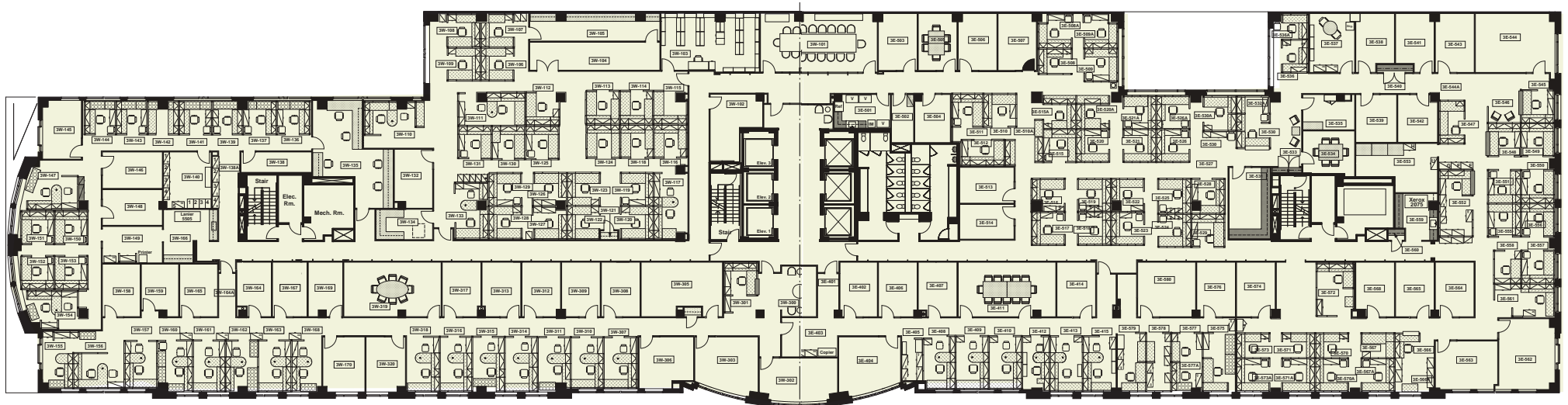
10 G Street, NE

FLOOR PLANS

Suite 300: 34,792 RSF

AMTRAK SUBLET THROUGH 12/31/2024 | \$25.00/SF FULL SERVICE

AVAILABLE PRIME SPACE | \$45.00/SF FULL SERVICE



FOR PRIME SPACE CONTACT:

KURT RICHTER | +1 202 266 1158
kurt.richter@cushwake.com

FOR SUBLEASE SPACE CONTACT:

BILL QUINBY | +1 202 624 8551
BQuinby@savills.us

DAVID CORNBROOKS | +1 202 624 8549
DCornbrooks@savills.us

TIM FOLEY | +1 202 624 8543
TFoley@savills.us

10G

10 G Street, NE

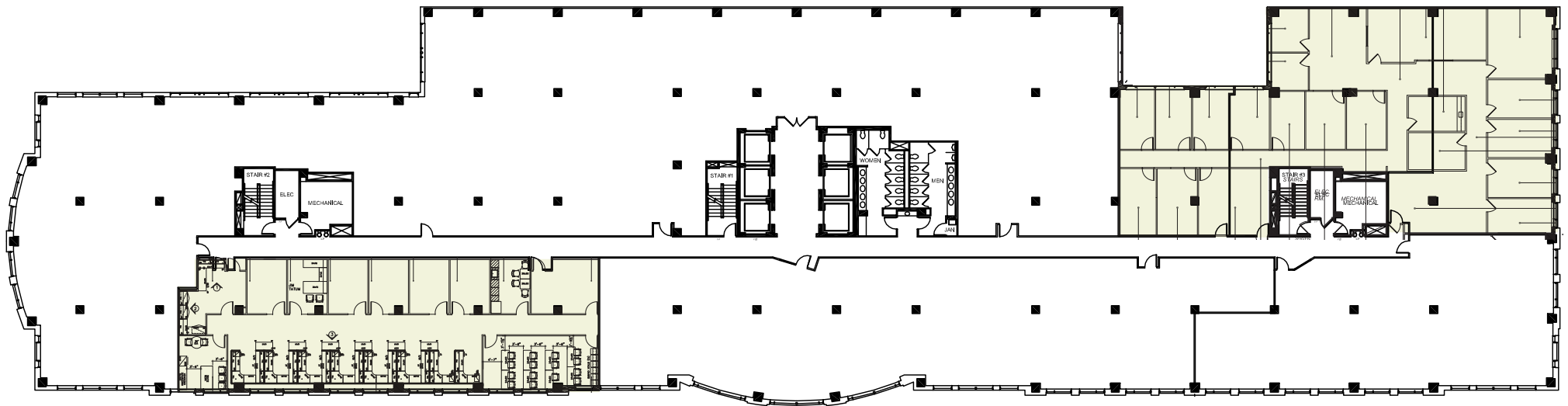
FLOOR PLANS

Suite 420 & 450: 4,079 RSF & 5,897 RSF

AMTRAK SUBLET THROUGH 12/31/2024 | \$25.00/SF FULL SERVICE

AVAILABLE PRIME SPACE | \$45.00/SF FULL SERVICE

SUITE 450



SUITE 420

FOR PRIME SPACE CONTACT:

KURT RICHTER | +1 202 266 1158
kurt.richter@cushwake.com

FOR SUBLEASE SPACE CONTACT:

BILL QUINBY | +1 202 624 8551
BQuinby@savills.us

DAVID CORNBROOKS | +1 202 624 8549
DCornbrooks@savills.us

TIM FOLEY | +1 202 624 8543
TFoley@savills.us

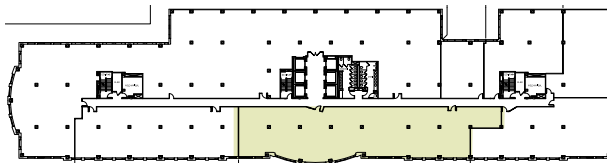
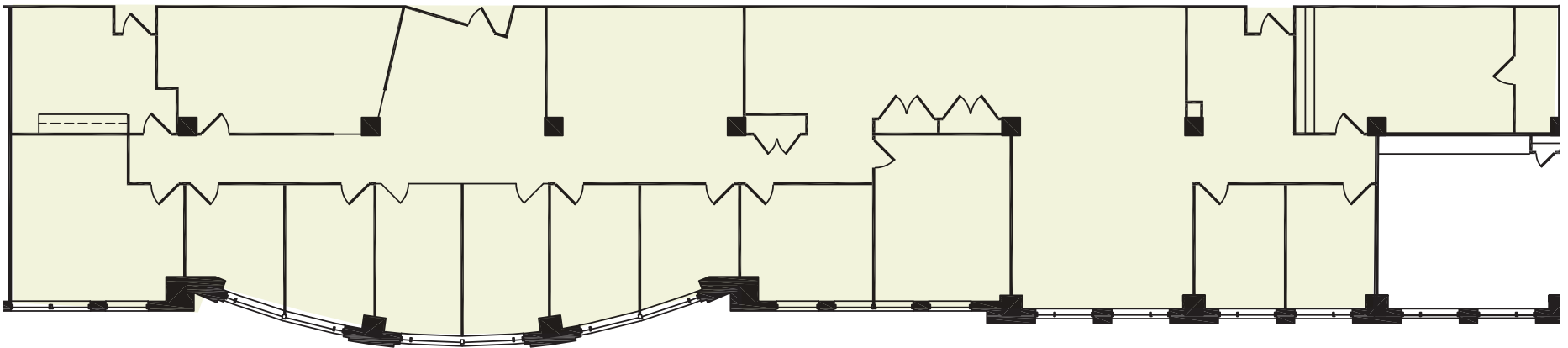
10G

10 G Street, NE

FLOOR PLANS

Suite 430: 6,160 SF

AVAILABLE PRIME SPACE | \$49.00/SF FULL SERVICE



FOR PRIME SPACE CONTACT:

KURT RICHTER | +1 202 266 1158
kurt.richter@cushwake.com



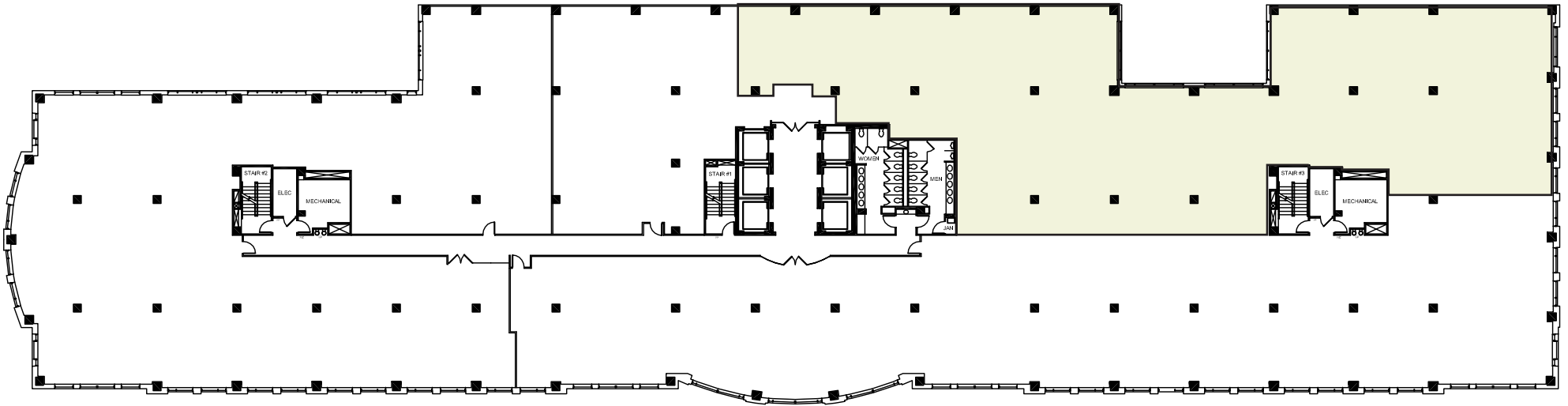
10G

10 G Street, NE

FLOOR PLANS

Suite 500: Approx. 15,000 SF

AVAILABLE PRIME SPACE | \$45.00/SF FULL SERVICE



FOR PRIME SPACE CONTACT:

KURT RICHTER | +1 202 266 1158
kurt.richter@cushwake.com



10G

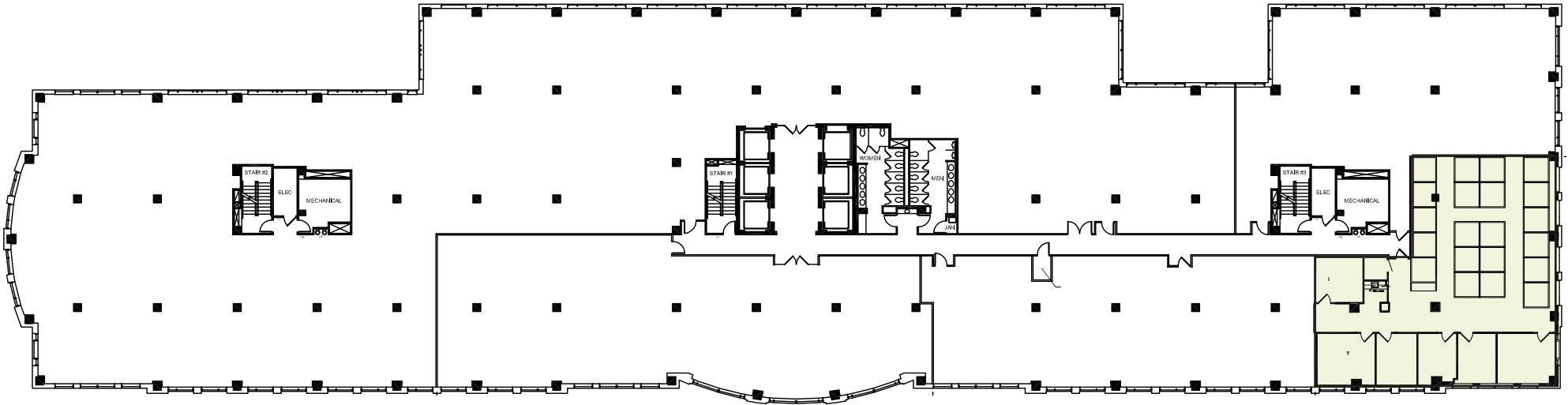
10 G Street, NE

FLOOR PLANS

Suite 620: 3,324 RSF

AMTRAK SUBLET THROUGH 12/31/2024 | \$25.00/SF FULL SERVICE

AVAILABLE PRIME SPACE | \$45.00/SF FULL SERVICE



FOR PRIME SPACE CONTACT:

KURT RICHTER | +1 202 266 1158
kurt.richter@cushwake.com

FOR SUBLEASE SPACE CONTACT:

BILL QUINBY | +1 202 624 8551
BQuinby@savills.us

DAVID CORNBROOKS | +1 202 624 8549
DCornbrooks@savills.us

TIM FOLEY | +1 202 624 8543
TFoley@savills.us

10G

10 G Street, NE



For more information, contact:

KURT RICHTER | +1 202 266 1158

kurt.richter@cushwake.com