



1710

**RHODE
ISLAND**

2,983 SF
FLOOR PLATES

OFFERS A UNIQUE
OPPORTUNITY
FOR SMALL FIRMS
TO HAVE FULL
CONTROL OF
FLOOR



**CUSHMAN &
WAKEFIELD**



1710

**RHODE
ISLAND**

BRUCE PASCAL

bruce.pascal@cushwake.com

+1 202 463 1357

KYLE MCFADDEN

kyle.mcfadden@cushwake.com

+1 202 739 0362



24/7 HVAC CAPABILITIES

TENANT CONTROLLED HVAC 24/7 – One Of DC's Only Buildings With No Overtime Hvac Cost



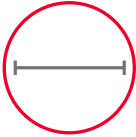
NEW

LOUNGE & CONFERENCE CENTER



NEWLY RENOVATED

LOBBY



FULL FLOOR SPEC SUITES

AVAILABLE



LOCATION

CENTRAL BUSINESS DISTRICT



IDEAL FLOORPLATES

FOR SINGLE TENANT TO HAVE FULL CONTROL OF FLOOR

AVAILABILITIES

LEVEL 5 (SPEC)	2,983 RSF	\$48.00 NET OF ELECTRIC	OFFICE
LEVEL 6 (SHELL)	2,983 RSF	\$48.00 NET OF ELECTRIC	OFFICE
LEVEL 9 (SPEC)	2,983 RSF	\$48.00 NET OF ELECTRIC	OFFICE
LEVEL 10	2,983 RSF	\$48.00 NET OF ELECTRIC	OFFICE
LEVEL 11 (SPEC)	2,983 RSF	\$48.00 NET OF ELECTRIC	OFFICE
LEVEL 12	2,983 RSF	\$48.00 NET OF ELECTRIC	OFFICE
LEVEL 13	2,983 RSF	\$48.00 NET OF ELECTRIC	OFFICE

1710

**RHODE
ISLAND**



VIEW



ENTRANCE

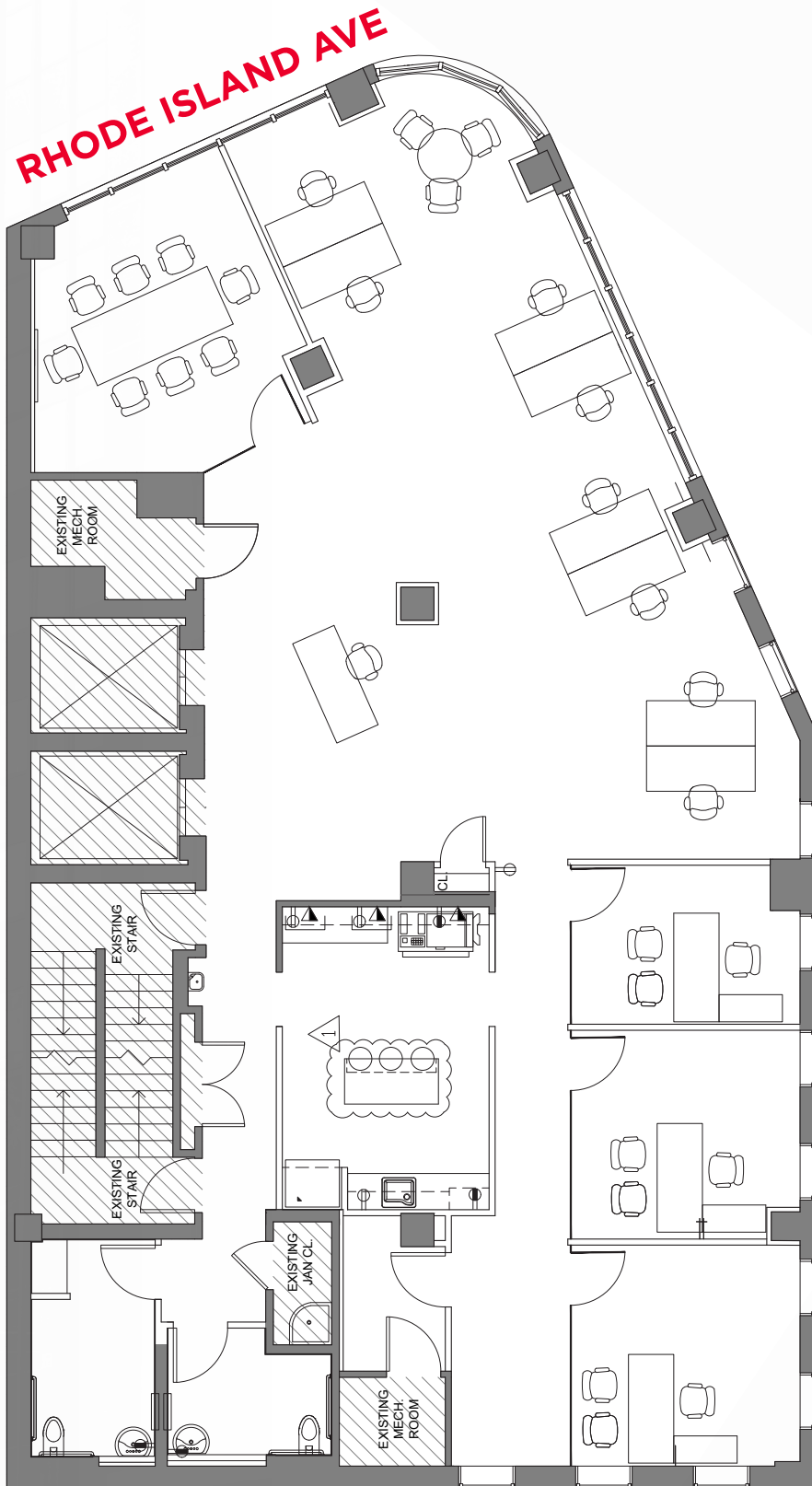


LOUNGE

5TH FLOOR (SPEC)

2,983 SF

VIEW
360°
VIEW
TOUR

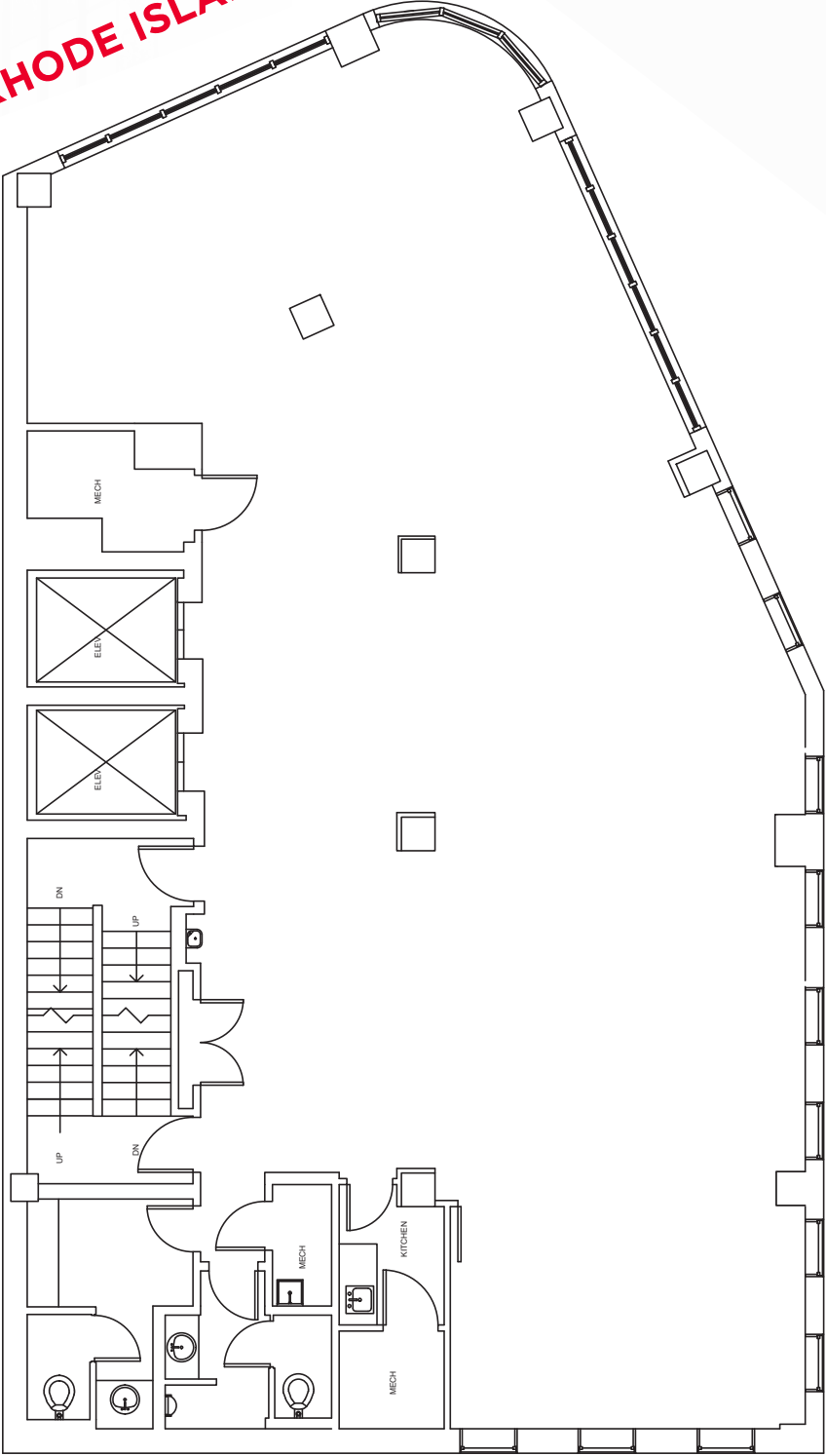


\$48.00
NET OF ELECTRIC

6TH FLOOR (SHELL)

2,983 SF

RHODE ISLAND AVE



\$48.00
NET OF ELECTRIC

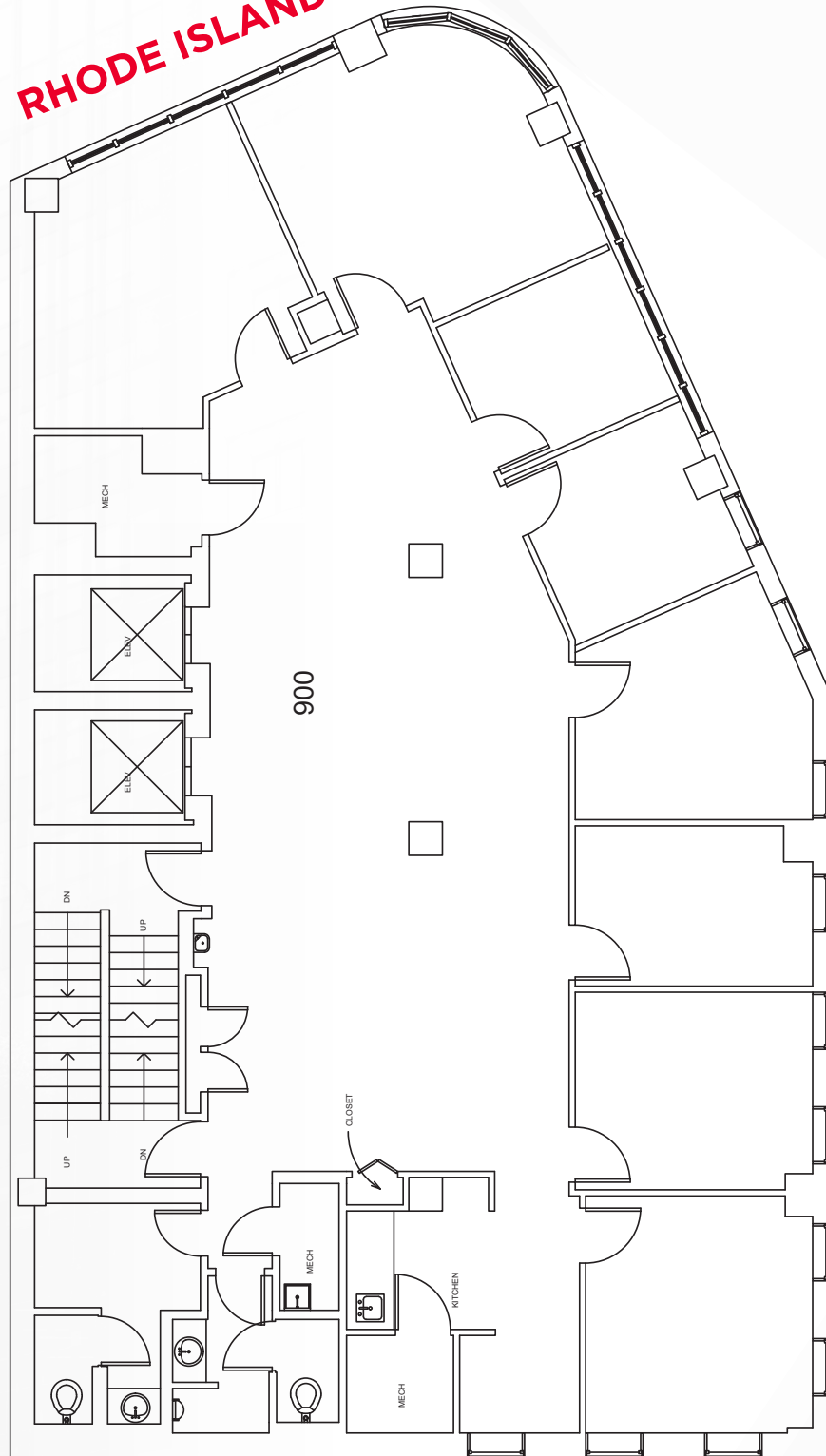
9TH FLOOR (SPEC)

2,983 SF

VIEW
360°
VIEW
TOUR



RHODE ISLAND AVE

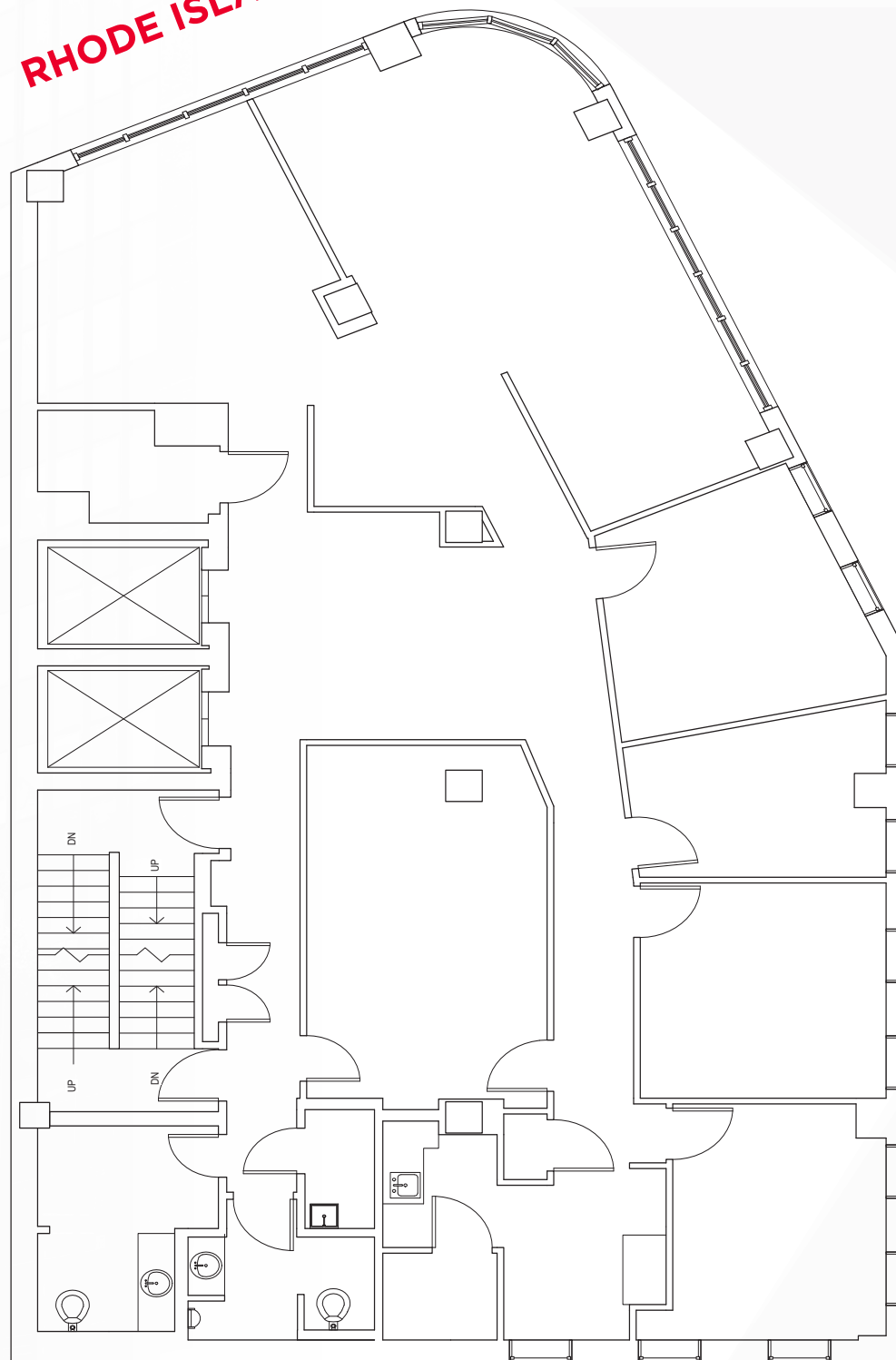


\$48.00
NET OF ELECTRIC

10TH FLOOR

2,983 SF

RHODE ISLAND AVE

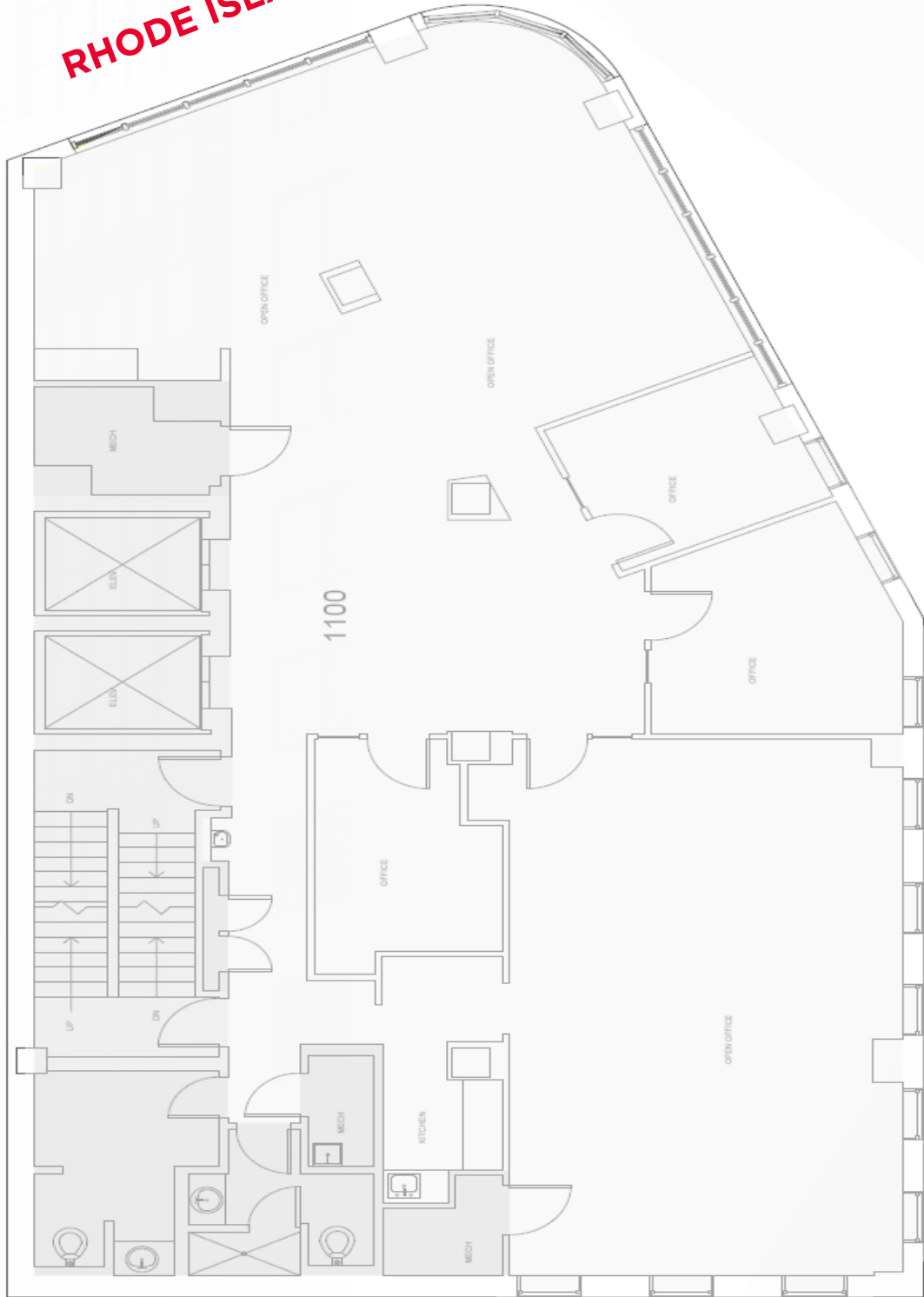


\$48.00
NET OF ELECTRIC

11TH FLOOR (SPEC)

2,983 SF

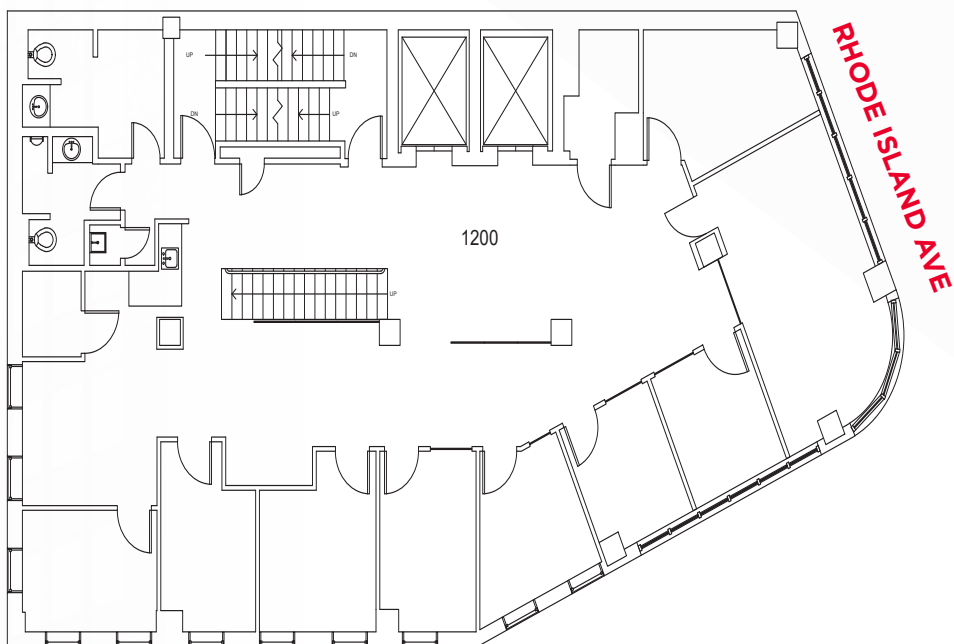
RHODE ISLAND AVE



\$48.00
NET OF ELECTRIC

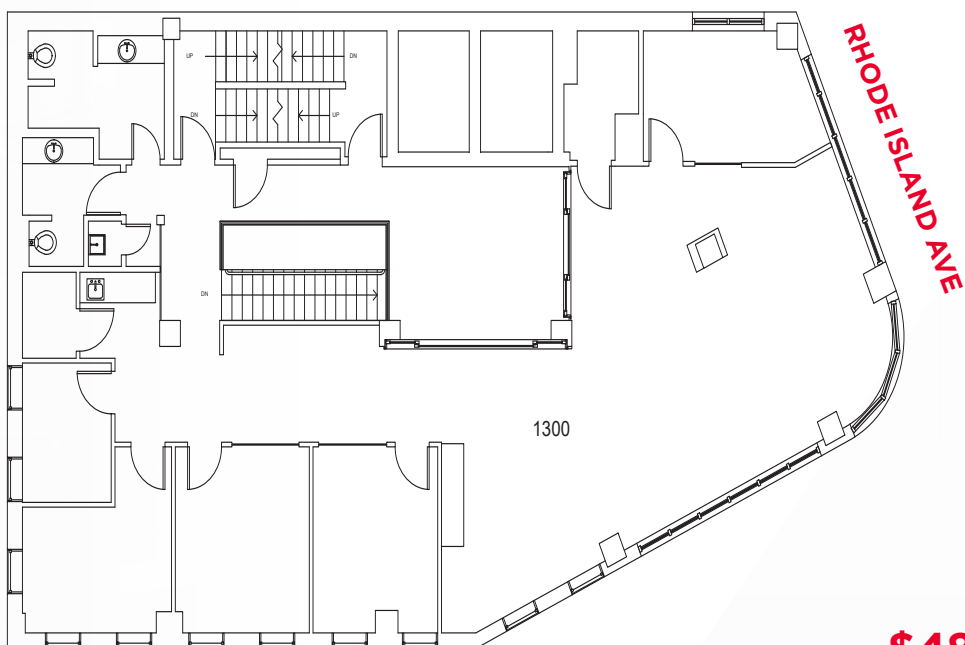
12TH FLOOR (4/1/22)

2,983 SF



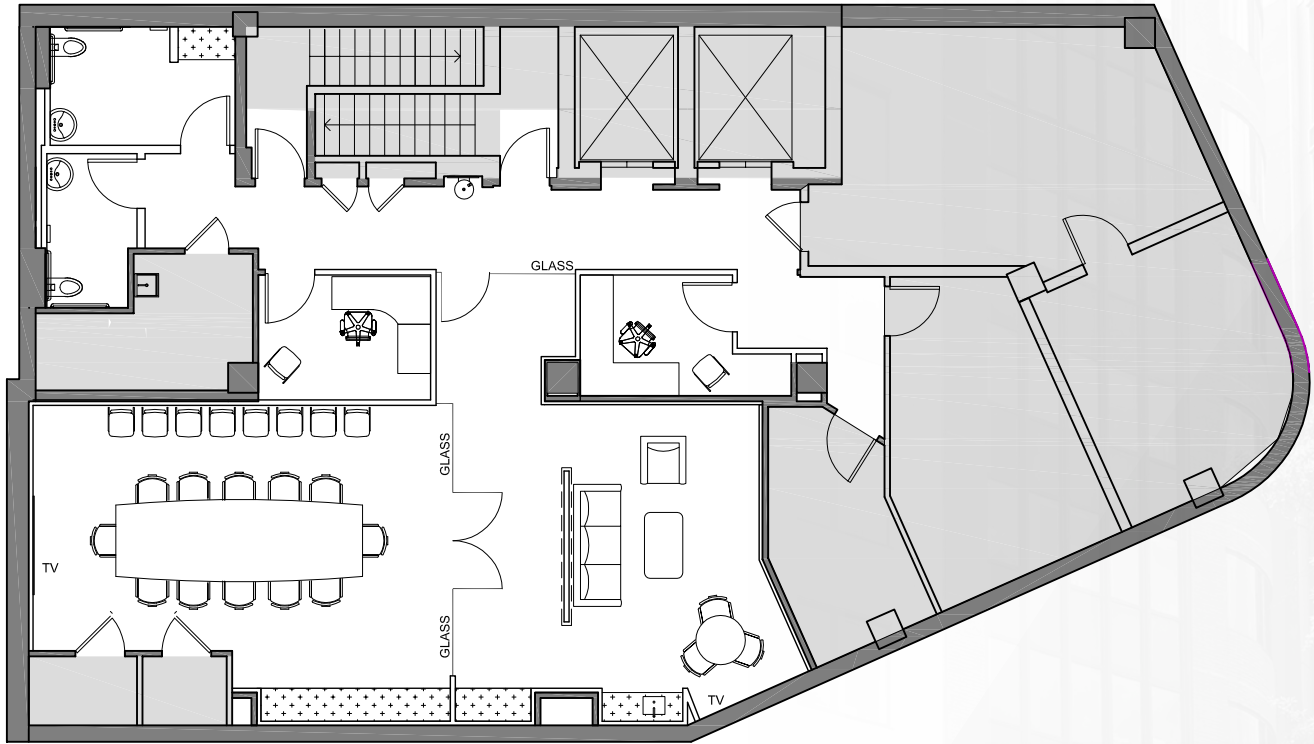
13TH FLOOR (4/1/22)

2,983 SF



\$48.00
NET OF ELECTRIC

LOBBY RENOVATIONS & NEWLY RENOVATED LOBBY





**FOR MORE
INFORMATION
PLEASE CONTACT**

BRUCE PASCAL

bruce.pascal@cushwake.com

+1 202 463 1357

KYLE MCFADDEN

kyle.mcfadden@cushwake.com

+1 202 739 0362

1710

**RHODE
ISLAND**