

1508

EUREKA ROAD
ROSEVILLE, CALIFORNIA

±3,071 - ±5,002 RSF AVAILABLE



PROPERTY HIGHLIGHTS

Suite 130 5,002 RSF

Suite 210 3,071 RSF

- On-site Fitness Room with showers and lockers
- On-site common conference room
- On-site management
- Private balcony available in select suites
- Walking distance to high-end retail and entertainment venues

CONTACT INFORMATION

CHRIS SCHWARZE

EXECUTIVE DIRECTOR

916.288.4803

chris.schwarze@cushwake.com

CA License #01291261

CHAD COOK, SIOR, CCIM

SENIOR DIRECTOR

916.329.1562

chad.cook@cushwake.com

CA License #01711687

KEVIN PARTINGTON

EXECUTIVE DIRECTOR

916.288.4807

kevin.partington@cushwake.com

CA License #01199010

CUSHMAN & WAKEFIELD INC.

400 Capitol Mall, Suite 1800,

Sacramento, CA 95814

916.288.4800

LIC. #0061633

HOME

FLOOR PLANS

GALLERY

LOCATION

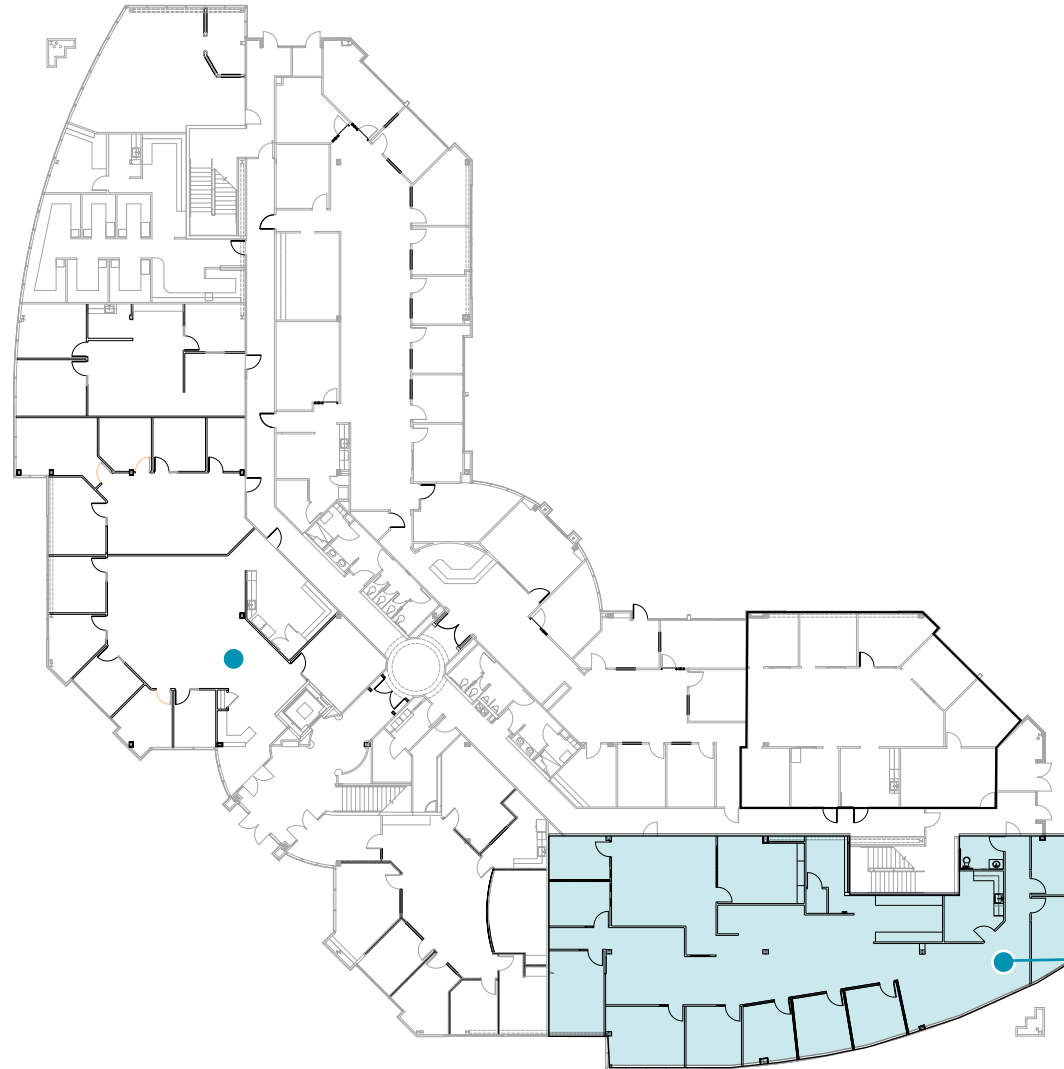
1508

EUREKA ROAD
ROSEVILLE, CALIFORNIA

1ST FLOOR

2ND FLOOR

FLOOR PLANS
1st FLOOR



SUITE 130

5,002 SF

*Existing furniture in place, and ready for plug-and-play operations

CONTACT INFORMATION

CHRIS SCHWARZE

EXECUTIVE DIRECTOR

916.288.4803

chris.schwarze@cushwake.com

CA License #01291261

CHAD COOK, SIOR, CCIM

SENIOR DIRECTOR

916.329.1562

chad.cook@cushwake.com

CA License #01711687

KEVIN PARTINGTON

EXECUTIVE DIRECTOR

916.288.4807

kevin.partington@cushwake.com

CA License #01199010

CUSHMAN & WAKEFIELD INC.

400 Capitol Mall, Suite 1800,

Sacramento, CA 95814

916.288.4800

LIC. #0061633

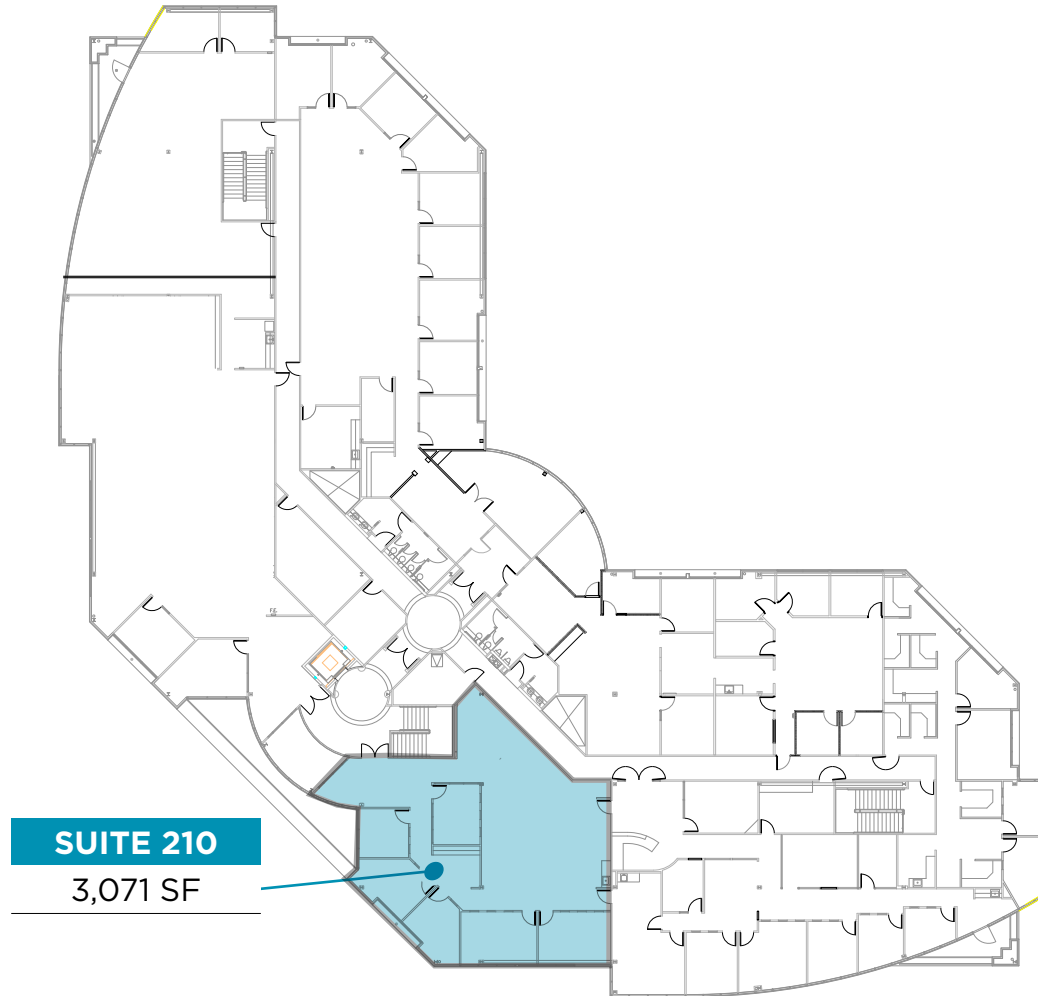
1508

EUREKA ROAD
ROSEVILLE, CALIFORNIA

1ST FLOOR

2ND FLOOR

FLOOR PLANS 2nd FLOOR



SUITE 210

3,071 SF

CONTACT INFORMATION

CHRIS SCHWARZE
EXECUTIVE DIRECTOR

916.288.4803
chris.schwarze@cushwake.com
CA License #01291261

CHAD COOK, SIOR, CCIM
SENIOR DIRECTOR

916.329.1562
chad.cook@cushwake.com
CA License #01711687

KEVIN PARTINGTON
EXECUTIVE DIRECTOR

916.288.4807
kevin.partington@cushwake.com
CA License #01199010

CUSHMAN & WAKEFIELD INC.
400 Capitol Mall, Suite 1800,
Sacramento, CA 95814
916.288.4800
LIC. #0061633

1508

EUREKA ROAD
ROSEVILLE, CALIFORNIA

GALLERY



CONTACT INFORMATION

CHRIS SCHWARZE
EXECUTIVE DIRECTOR

916.288.4803

chris.schwarze@cushwake.com

CA License #01291261

CHAD COOK, SIOR, CCIM
SENIOR DIRECTOR

916.329.1562

chad.cook@cushwake.com

CA License #01711687

KEVIN PARTINGTON
EXECUTIVE DIRECTOR

916.288.4807

kevin.partington@cushwake.com

CA License #01199010

CUSHMAN & WAKEFIELD INC.
400 Capitol Mall, Suite 1800,

Sacramento, CA 95814

916.288.4800

LIC. #0061633

1508

LOCATION

**EUREKA ROAD
ROSEVILLE, CALIFORNIA**



CONTACT INFORMATION

[View Site Specific COVID-19 Prevention Plan](#)

CHRIS SCHWARZE
EXECUTIVE DIRECTOR
916.288.4803
chris.schwarze@cushwake.com
CA License #01291261

CHAD COOK, SIOR, CCIM
SENIOR DIRECTOR
916.329.1562
chad.cook@cushwake.com
CA License #01711687

KEVIN PARTINGTON
EXECUTIVE DIRECTOR
916.288.4807
kevin.partington@cushwake.com
CA License #01199010

CUSHMAN & WAKEFIELD INC.
400 Capitol Mall, Suite 1800,
Sacramento, CA 95814
916.288.4800
LIC. #0061633