

1540

1555

RIVER PARK DRIVE  
SACRAMENTO, CA

## PROPERTY HIGHLIGHTS

- Completely renovated and revitalized office park
- Excellent Proximity to numerous retail & dining amenities
- Great access to Business 80 & Highway 160
- Conference facilities
- Spaces built out for immediate occupancy
- Featured spaces contain private outdoor balconies
- 4.00/1,000 SF Parking Ratio

### SPENCER NIELSEN

Senior Associate  
+1 916 288 4531  
spencer.nielsen@cushwake.com  
CA LIC #01964163

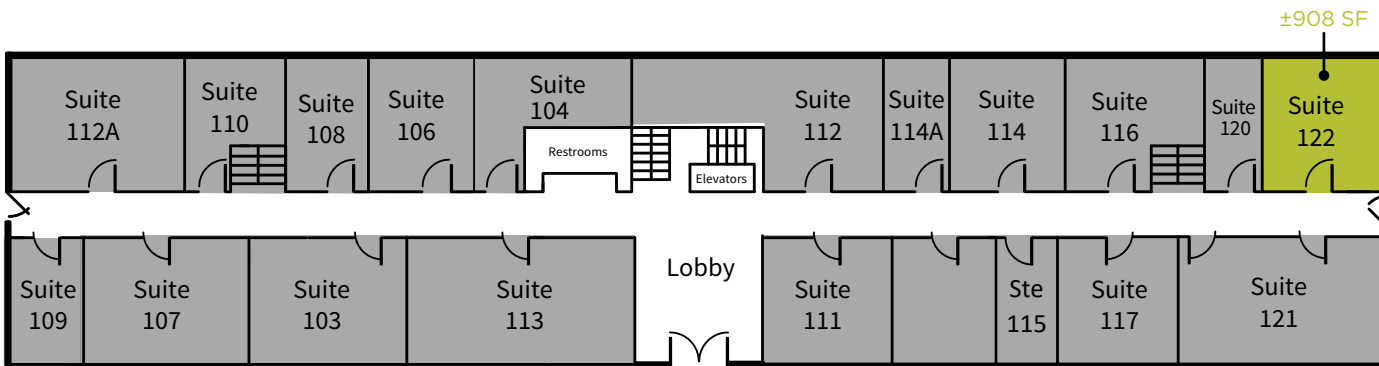
### SEAN MULLEN

Managing Director  
+1 916 288 4811  
sean.mullen@cushwake.com  
CA LIC #01845406

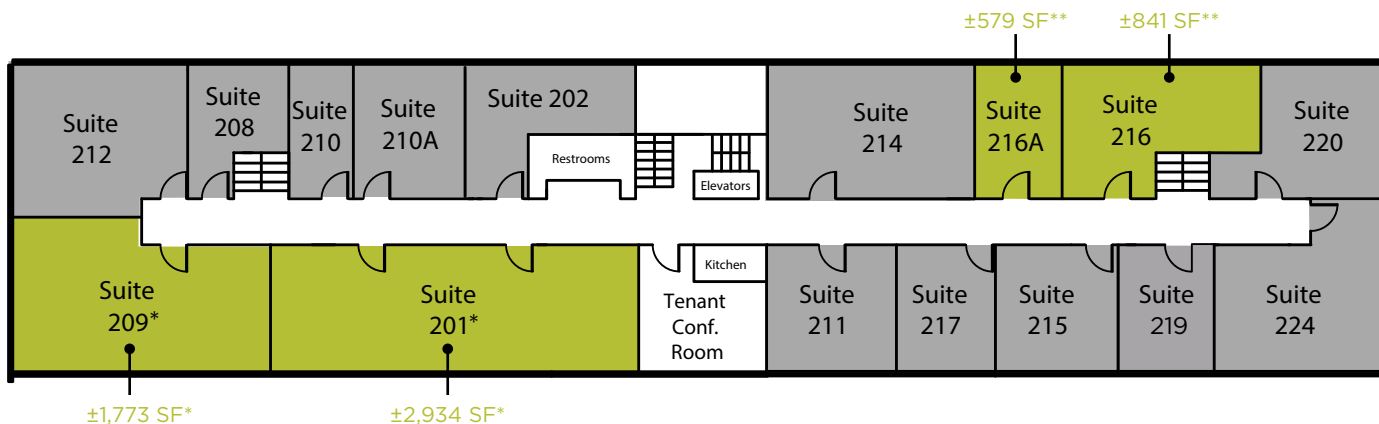


1540 RIVER PARK DRIVE

1ST FLOOR



2ND FLOOR



\*can be combined for ±4,707 SF

\*\*Suites can combine for a total of ±1,420 SF

■ AVAILABLE FOR LEASE    ■ LEASED

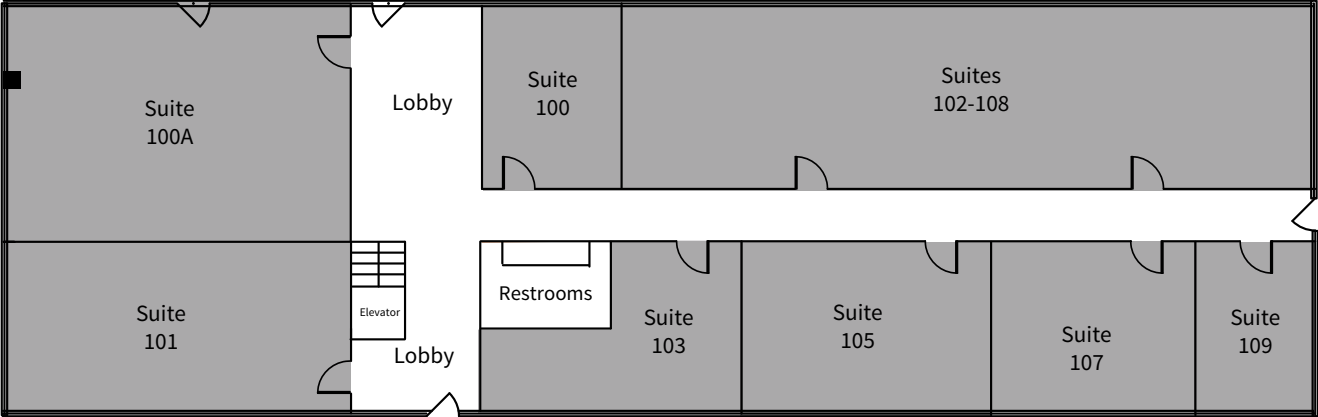
**SPENCER NIELSEN**  
 Senior Associate  
 +1 916 288 4531  
 spencer.nielsen@cushwake.com  
 CA LIC #01964163

**SEAN MULLEN**  
 Managing Director  
 +1 916 288 4811  
 sean.mullen@cushwake.com  
 CA LIC #01845406

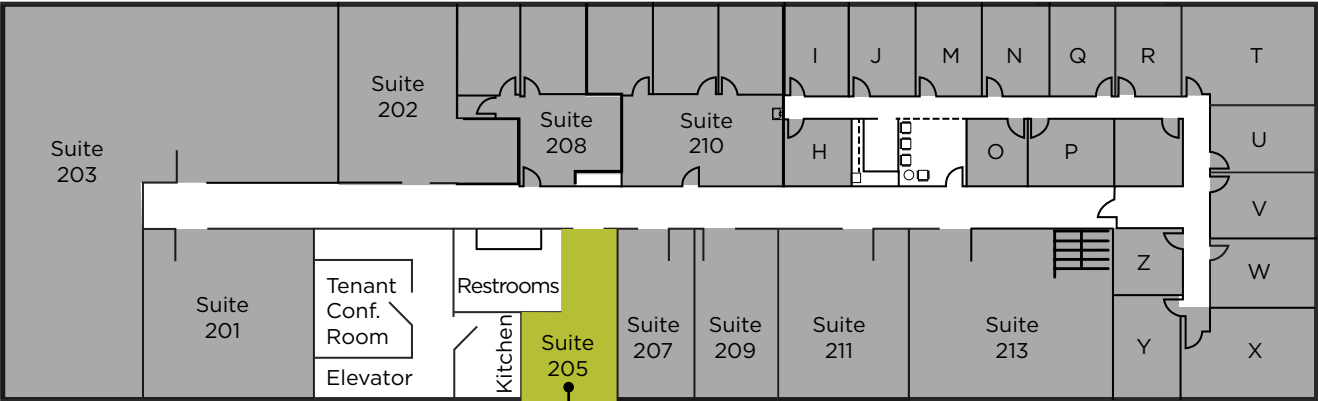


1555 RIVER PARK DRIVE

1ST FLOOR



2ND FLOOR



±674 SF  
Available 3/1/25

**AVAILABLE FOR LEASE**    **LEASED**

**SPENCER NIELSEN**  
Senior Associate  
+1 916 288 4531  
spencer.nielsen@cushwake.com  
CA LIC #01964163

**SEAN MULLEN**  
Managing Director  
+1 916 288 4811  
sean.mullen@cushwake.com  
CA LIC #01845406



**PROPERTY PHOTOS**



**SPENCER NIELSEN**

Senior Associate  
+1 916 288 4531  
spencer.nielsen@cushwake.com  
CA LIC #01964163

**SEAN MULLEN**

Managing Director  
+1 916 288 4811  
sean.mullen@cushwake.com  
CA LIC #01845406





**CAL EXPO**  
80+ EVENTS PER YEAR  
4M+ ANNUAL VISTIORS

**POINT WEST PLAZA**  
KOHL'S  
OLD NAVY  
HOBBY LOBBY  
FIVE BELOW  
PETCO

**ARDEN MALL**  
MACY'S  
JCPENNEY  
APPLE  
COACH  
MICHAEL KORS  
LULUEMON  
SEASON 52  
SEPHORA  
BANANA REPUBLIC  
FOOT LOCKER  
BJ'S RESTAURANT  
85°C BAKERY

**HBA**  
HOWEBOUTARDEN  
CENTURY THEATRES  
NORDSTROM RACK  
HOMEGOODS  
THE CONTAINER STORE  
STARBUCKS  
CARTERS  
PINKBERRY  
NIKE OUTLET STORE  
MOD PIZZA  
JAMBA JUICE

**PROPERTY**

**MARKET SQUARE**  
BARNES & NOBLE  
CALIFORINA PIZZA KITCHEN  
DSW  
BEST BUY  
DOS COYOTES  
CRUNCH FITNESS  
FEDEX

**SPENCER NIELSEN**  
Senior Associate  
+1 916 288 4531  
spencer.nielsen@cushwake.com  
CA LIC #01964163

**SEAN MULLEN**  
Managing Director  
+1 916 288 4811  
sean.mullen@cushwake.com  
CA LIC #01845406



**SPENCER NIELSEN | SENIOR ASSOCIATE**

+1 916 288 4531

[spencer.nielsen@cushwake.com](mailto:spencer.nielsen@cushwake.com)

CA LIC #01964163

**SEAN MULLEN | MANAGING DIRECTOR**

+1 916 288 4811

[sean.mullen@cushwake.com](mailto:sean.mullen@cushwake.com)

CA LIC #01845406

400 Capitol Mall, Suite 1800

Sacramento, CA 95814

+1 916 288 4800

**[cushmanwakefield.com](http://cushmanwakefield.com)**