

Office Space for Lease

2020 HURLEY WAY

Sacramento, CA 95825





Asking Rate:
\$1.55 / RSF Full Service Gross



Suites Available Ranging from
±950 RSF to ±4,178 RSF



Garden Style Human Scale
Office Complex with Water
Features Providing Tenants with
an Open-Air Environment



Close Proximity to a Variety of
Amenities Including Dining,
Shopping, Banks, and More



Common Area Conference Room,
Fitness Facility, & On-Site Café



4.0/1,000 Parking Ratio







1. MARKET SQUARE

AT&T Wireless	Mikuni
California Pizza Kitchen	The Cheesecake Factory
Subway	Barnes & Noble
Ulta Beauty	Dos Coyotes
Xfinity	Peeet's Coffee
At&T Store	Fedex

2. ARDEN MALL

Macy's	Michael Kors
Jcpenney	Armani Exchange
Apple	Sears
Coach	Madewell
Mac	Luluemon
Season 52	Gen Korean Bbq
Starbucks	Jamba Juice
BJ's Brewhouse	Janie & Jack

3. HOWEBOUTARDEN

Century Theatres	Nordstrom Rack
Homegoods	Container Store
Starbucks	T4, Tea for Me
MOD Pizza	Jamba Juice
Bonchon	Kura Revolving Sushi Bar
Ahi Poki	Michaels
18 Grams Coffee	Burlington

4. POINT WEST PLAZA

Kohl's	Old Navy
Hobby Lobby	Famous Footwear
Petco	Dauids Bridal
Starbucks	Hobby Lobby
Olive Garden	Black Bear

Availability

SUITE 292 ±950 RSF

SUITE 120 ±1,642 RSF

For more information,
please contact:

SEAN MULLEN

+1 916 288 4811

CA LIC#01845406

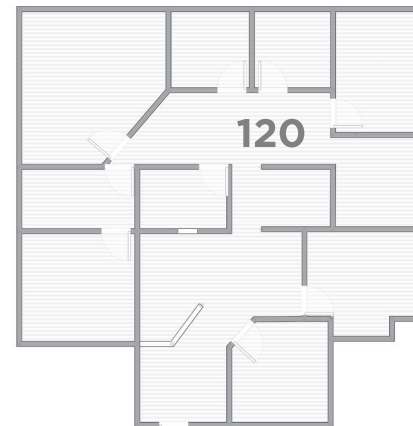
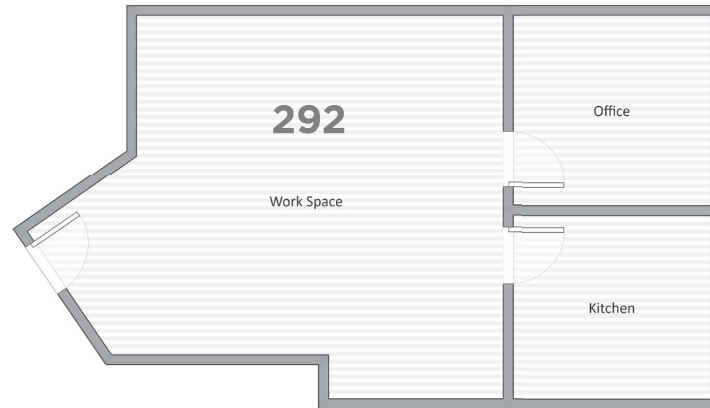
sean.mullen@cushwake.com

SPENCER NIELSEN

+1 916 288 4531

CA LIC#01964163

spencer.nielsen@cushwake.com



Availability

SUITE 185 ±1,325 RSF

SUITE 105 ±1,742 RSF

SUITE 150 ±2,568 RSF

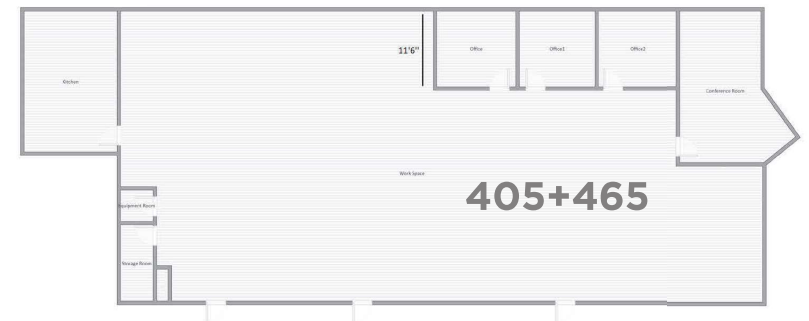
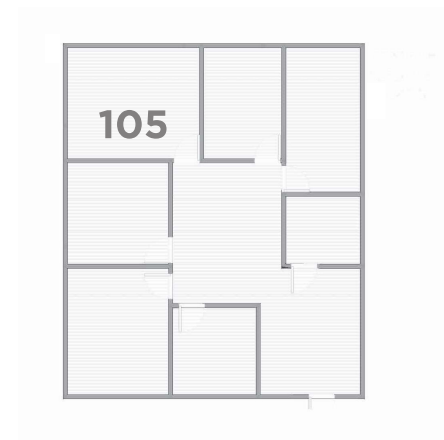
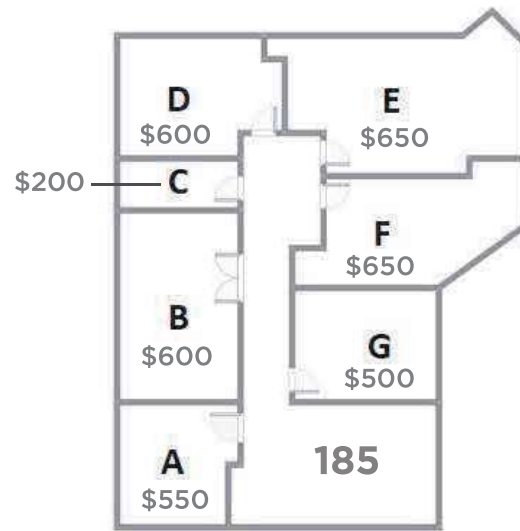
***SUITE 405+465** ±4,178 RSF

*Plug and Play

For more information,
please contact:

SEAN MULLEN
+1 916 288 4811
CA LIC#01845406
sean.mullen@cushwake.com

SPENCER NIELSEN
+1 916 288 4531
CA LIC#01964163
spencer.nielsen@cushwake.com





Office Space for Lease

For more information,
please contact:

SEAN MULLEN

Managing Director

+1 916 288 4811

CA LIC#01845406

sean.mullen@cushwake.com

SPENCER NIELSEN

Senior Associate

+1 916 288 4531

CA LIC#01964163

spencer.nielsen@cushwake.com

©2020 CUSHMAN & WAKEFIELD. ALL RIGHTS RESERVED. THE INFORMATION CONTAINED IN THIS COMMUNICATION IS STRICTLY CONFIDENTIAL. THIS INFORMATION HAS BEEN OBTAINED FROM SOURCES BELIEVED TO BE RELIABLE BUT HAS NOT BEEN VERIFIED. NO WARRANTY OR REPRESENTATION, EXPRESS OR IMPLIED, IS MADE AS TO THE CONDITION OF THE PROPERTY (OR PROPERTIES) REFERENCED HEREIN OR AS TO THE ACCURACY OR COMPLETENESS OF THE INFORMATION CONTAINED HEREIN, AND SAME IS SUBMITTED SUBJECT TO ERRORS, OMISSIONS, CHANGE OF PRICE, RENTAL OR OTHER CONDITIONS, WITHDRAWAL WITHOUT NOTICE, AND TO ANY SPECIAL LISTING CONDITIONS IMPOSED BY THE PROPERTY OWNER(S). ANY PROJECTIONS, OPINIONS OR ESTIMATES ARE SUBJECT TO UNCERTAINTY AND DO NOT SIGNIFY CURRENT OR FUTURE PROPERTY PERFORMANCE.

CUSHMAN &
WAKEFIELD