

9821

BUSINESS PARK DR.
SACRAMENTO, CA

State of California
Department of Consumer Affairs
Contractors State License Board

Sean Mullen

Managing Director
CA License 01845406
sean.mullen@cushwake.com
+1 916 288 4811

Kevin Goldthwaite

Director
License #01911862
kevin.goldthwaite@cushwake.com
+1 916 403 1818



PROPERTY HIGHLIGHTS



4.10 / 1000 PARKING RATIO



FLEXIBLE VACANCY OPTIONS



15 MINUTE DRIVE DOWNTOWN



ON SITE SHOWERS, LOCKERS AND BIKE LOCKERS



SECURED ENTRANCE



LEED SILVER CERTIFICATION



WALKING DISTANCE TO LIGHT RAIL AND OTHER PUBLIC TRANSPORTATION



CLOSE TO MULTIPLE RESTAURANTS AND EATERIES

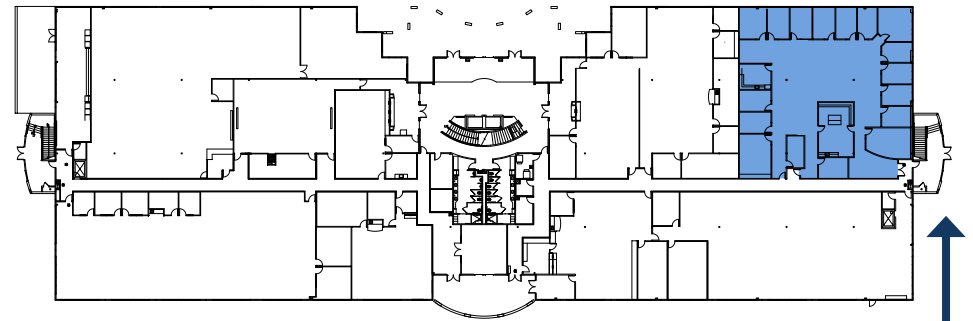
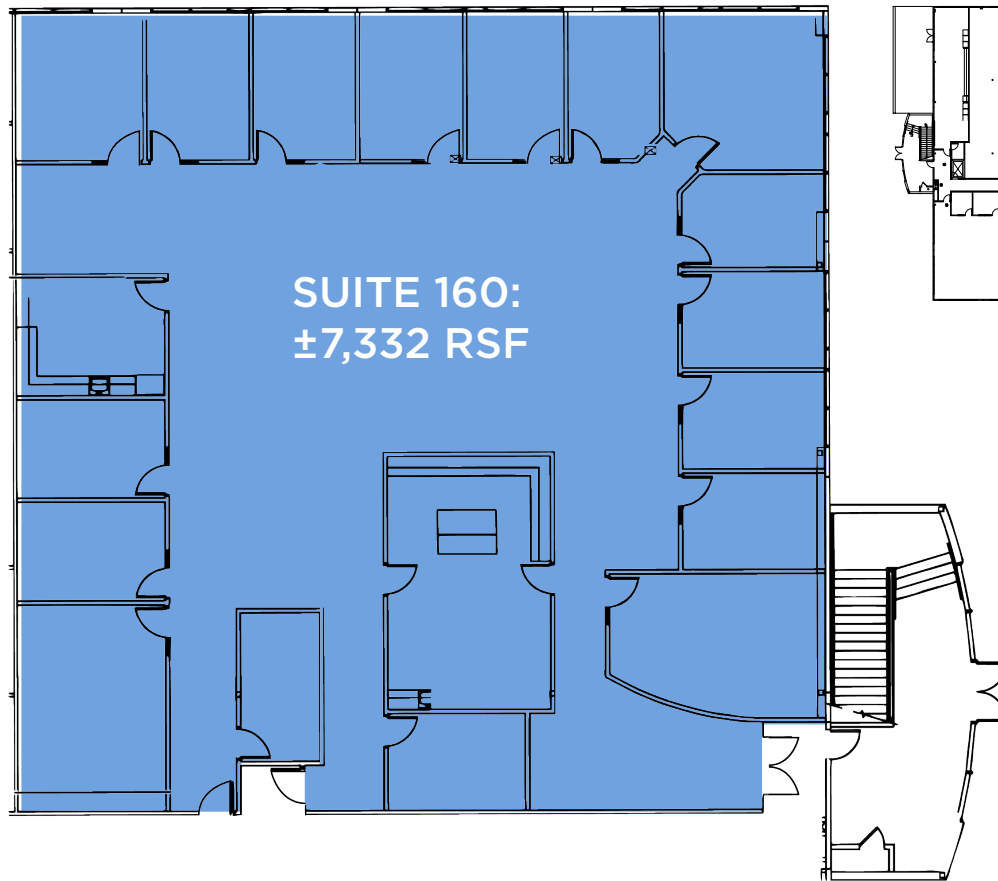
PROPERTY PHOTOS



FLOOR PLANS

SUITE 160: $\pm 7,332$ RSF

(CAN BE DEMISED TO +/- 4,500 RSF OR +/- 2,800 RSF)



DIRECT TENANT
ACCESS



NEARBY AMENITIES



9821

BUSINESS PARK DR.
SACRAMENTO, CA

Sean Mullen

Managing Director
CA License 01845406
sean.mullen@cushwake.com
+1 916 288 4811

Kevin Goldthwaite

Director
License #01911862
kevin.goldthwaite@cushwake.com
+1 916 403 1818



**CUSHMAN &
WAKEFIELD**

©2022 Cushman & Wakefield. All rights reserved. The information contained in this communication is strictly confidential. This information has been obtained from sources believed to be reliable but has not been verified. NO WARRANTY OR REPRESENTATION, EXPRESS OR IMPLIED, IS MADE AS TO THE CONDITION OF THE PROPERTY (OR PROPERTIES) REFERENCED HEREIN OR AS TO THE ACCURACY OR COMPLETENESS OF THE INFORMATION CONTAINED HEREIN, AND SAME IS SUBMITTED SUBJECT TO ERRORS, OMISSIONS, CHANGE OF PRICE, RENTAL OR OTHER CONDITIONS, WITHDRAWAL WITHOUT NOTICE, AND TO ANY SPECIAL LISTING CONDITIONS IMPOSED BY THE PROPERTY OWNER(S). ANY PROJECTIONS, OPINIONS OR ESTIMATES ARE SUBJECT TO UNCERTAINTY AND DO NOT SIGNIFY CURRENT OR FUTURE PROPERTY PERFORMANCE.