

4600

ROSEVILLE ROAD

NORTH HIGHLANDS
CALIFORNIA



CHAD COOK, SIOR, CCIM
SENIOR DIRECTOR
+1 916 329 1562
chad.cook@cushwake.com
LIC #01711687

ZACH MOSLE, CCIM
DIRECTOR
+1 916 329 1543
zach.mosle@cushwake.com
LIC #01924595

CUSHMAN & WAKEFIELD
400 Capitol Mall, Suite 1800
Sacramento, California 95814
+1 916 288 4800
cushmanwakefield.com

FOR LEASE

4600

ROSEVILLE ROAD

NORTH HIGHLANDS
CALIFORNIA



FOR MORE INFORMATION, PLEASE CONTACT:

CHAD COOK, SIOR, CCIM
SENIOR DIRECTOR
+1 916 329 1562
chad.cook@cushwake.com
LIC #01711687

ZACH MOSLE, CCIM
DIRECTOR
+1 916 329 1543
zach.mosle@cushwake.com
LIC #01924595



ASKING LEASE RATE

\$1.20 per SF, Full Service Gross

AVAILABILITIES

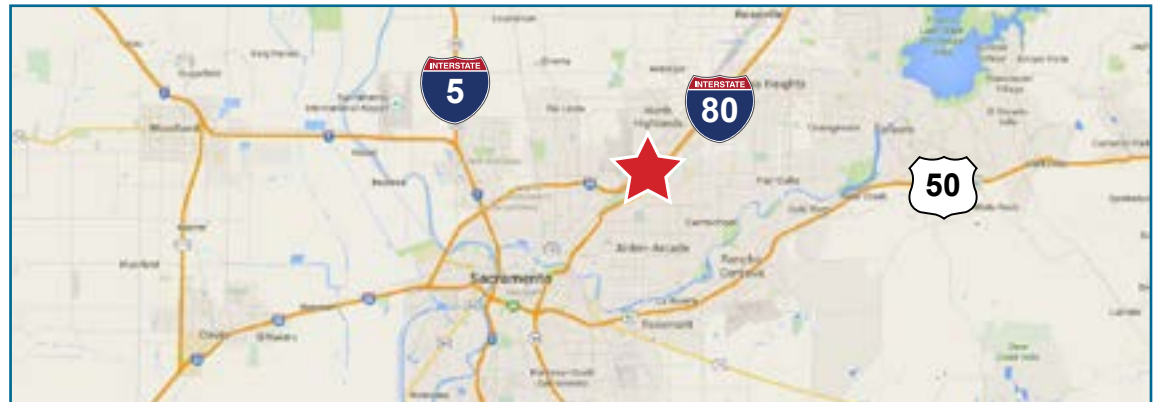
Suite 100: ±1,932 SF

Suite 190: ±3,650 SF

Suite 240: ±1,709 SF

PROPERTY HIGHLIGHTS

- Building-top Signage Available
- Attractive Steel/Concrete Construction with Floor-To-Ceiling Glass Lines
- Lush, Well-Maintained Landscaping
- On-Site Property Management
- Close Proximity to Food, Lodging, and Entertainment
- Abundant Free Parking
- Within Property and Business Improvement District (PBID)
- Photovoltaic Solar Array installed in 2017



400 Capitol Mall, Suite 1800
Sacramento, California 95814
+1 916 288 4800
www.cushmanwakefield.com

FOR LEASE

4600

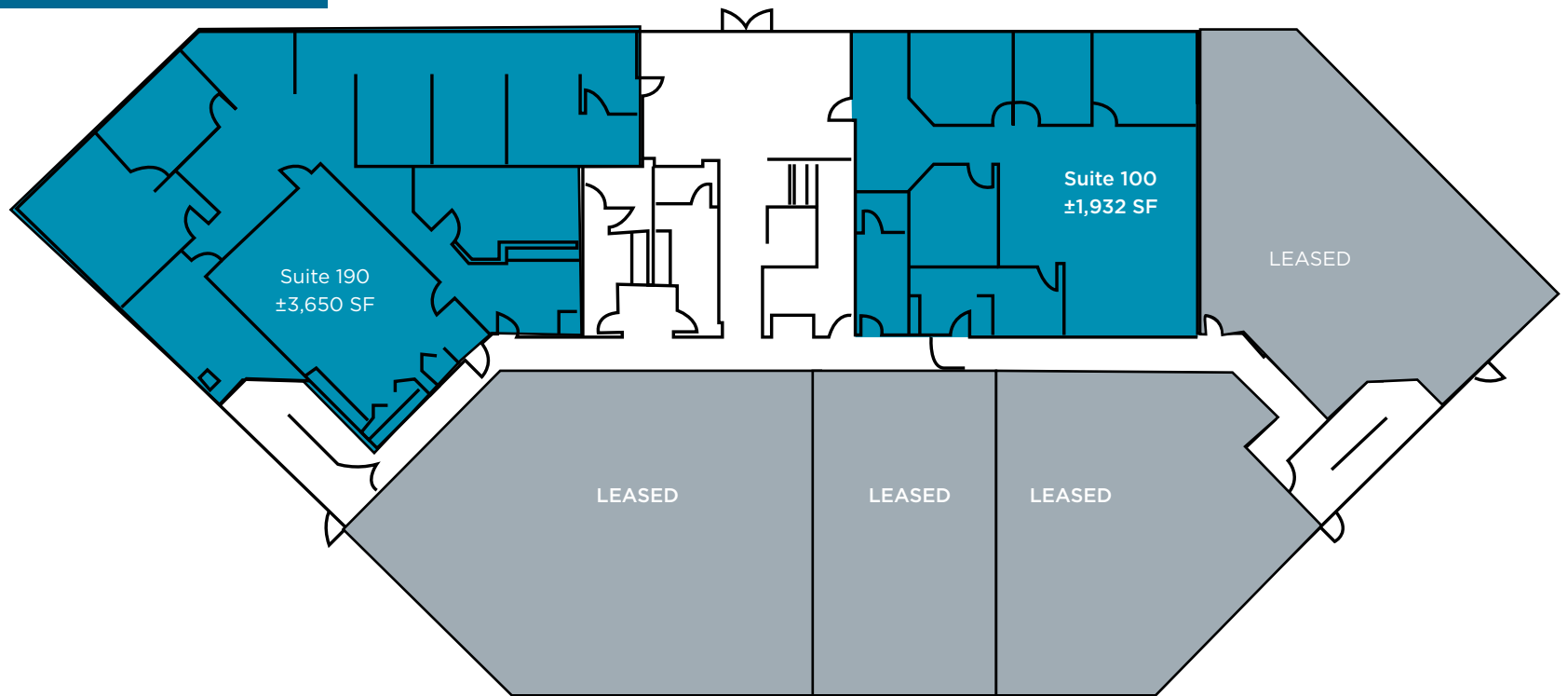
ROSEVILLE ROAD

NORTH HIGHLANDS

CALIFORNIA



FIRST FLOOR



FOR MORE INFORMATION, PLEASE CONTACT:

CHAD COOK, SIOR, CCIM

SENIOR DIRECTOR
+1 916 329 1562
chad.cook@cushwake.com
LIC #01711687

ZACH MOSLE, CCIM

DIRECTOR
+1 916 329 1543
zach.mosle@cushwake.com
LIC #01924595

400 Capitol Mall, Suite 1800
Sacramento, California 95814
+1 916 288 4800
www.cushmanwakefield.com

FOR LEASE

4600

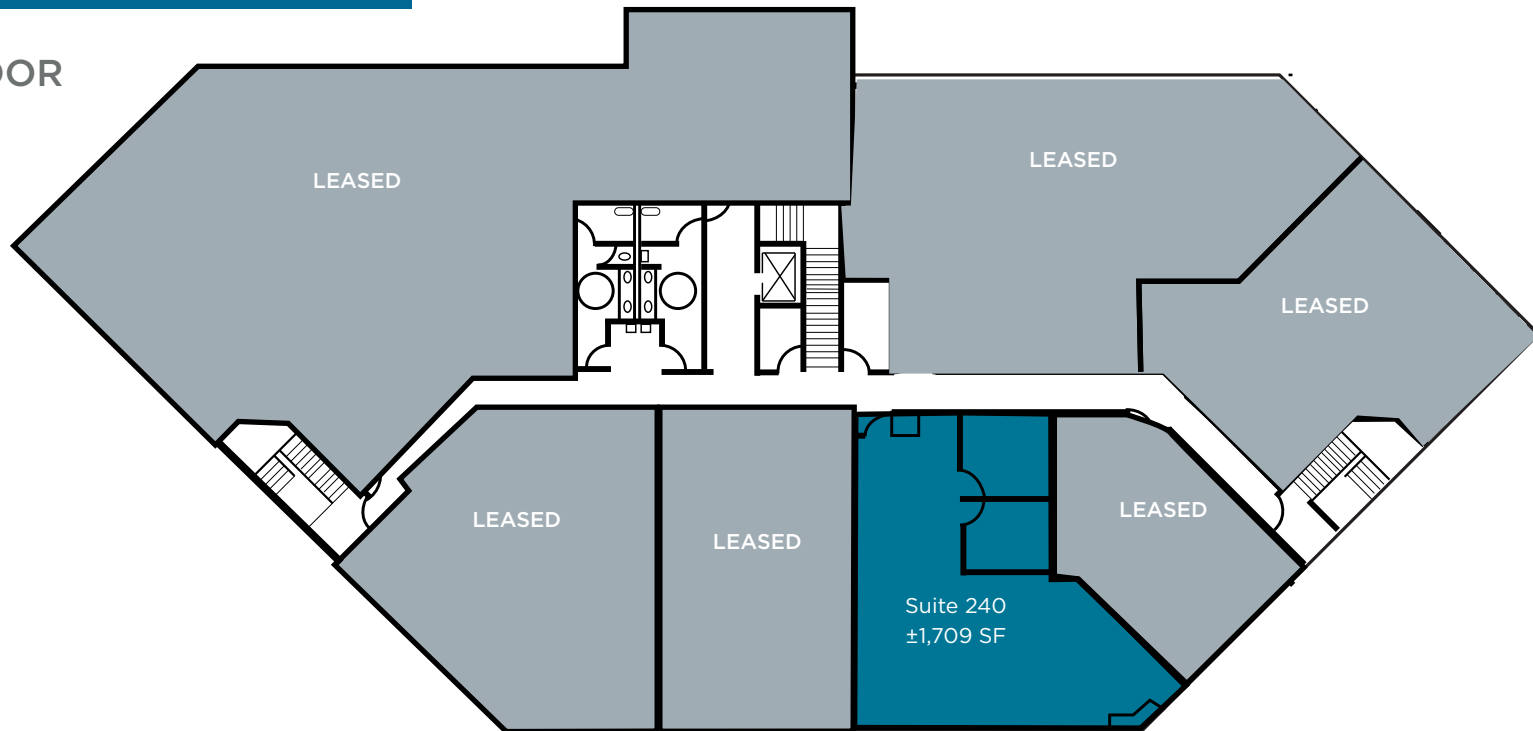
ROSEVILLE ROAD

NORTH HIGHLANDS

CALIFORNIA



SECOND FLOOR



FOR MORE INFORMATION, PLEASE CONTACT:

CHAD COOK, SIOR, CCIM

SENIOR DIRECTOR
+1 916 329 1562
chad.cook@cushwake.com
LIC #01711687

ZACH MOSLE, CCIM

DIRECTOR
+1 916 329 1543
zach.mosle@cushwake.com
LIC #01924595

400 Capitol Mall, Suite 1800
Sacramento, California 95814
+1 916 288 4800
www.cushmanwakefield.com

FOR LEASE

4600

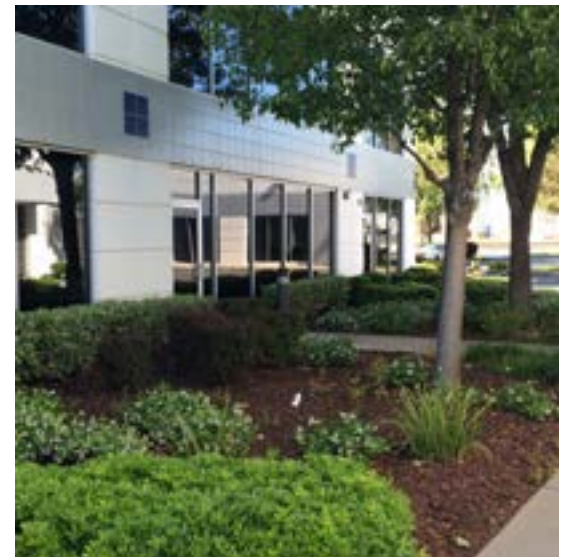
ROSEVILLE ROAD

NORTH HIGHLANDS

CALIFORNIA



PHOTOS



FOR MORE INFORMATION, PLEASE CONTACT:

CHAD COOK, SIOR, CCIM

SENIOR DIRECTOR
+1 916 329 1562
chad.cook@cushwake.com
LIC #01711687

ZACH MOSLE, CCIM

DIRECTOR
+1 916 329 1543
zach.mosle@cushwake.com
LIC #01924595

400 Capitol Mall, Suite 1800
Sacramento, California 95814
+1 916 288 4800
www.cushmanwakefield.com

FOR LEASE

4600

ROSEVILLE ROAD

NORTH HIGHLANDS
CALIFORNIA



FOR MORE INFORMATION, PLEASE CONTACT:

CHAD COOK, SIOR, CCIM

SENIOR DIRECTOR
+1 916 329 1562
chad.cook@cushwake.com
LIC #01711687

ZACH MOSLE, CCIM

DIRECTOR
+1 916 329 1543
zach.mosle@cushwake.com
LIC #01924595

400 Capitol Mall, Suite 1800
Sacramento, California 95814
+1 916 288 4800
www.cushmanwakefield.com

Cushman & Wakefield Copyright 2022. The information contained herein was lawfully obtained from sources we consider reliable. Cushman & Wakefield is not responsible and expressly disclaims all liability for errors, omissions, prior sales, withdrawal from the market or change in price. Seller (or Lessor, as the case may be) and broker make no representation as to the environmental condition of the property and recommend Purchaser's (or Lessee's) independent investigation.

FOR LEASE

4600

ROSEVILLE ROAD

NORTH HIGHLANDS

CALIFORNIA



FOR MORE INFORMATION, PLEASE CONTACT:

CHAD COOK, SIOR, CCIM

SENIOR DIRECTOR
+1 916 329 1562
chad.cook@cushwake.com
LIC #01711687

ZACH MOSLE, CCIM

DIRECTOR
+1 916 329 1543
zach.mosle@cushwake.com
LIC #01924595

400 Capitol Mall, Suite 1800
Sacramento, California 95814
+1 916 288 4800
www.cushmanwakefield.com