

# OFFICES AT BELMAR

THE ORIGINAL LIVE, WORK, PLAY DEVELOPMENT

500 S TELLER STREET  
Lakewood, CO 80226

## New Construction Opportunity!

### Building Information

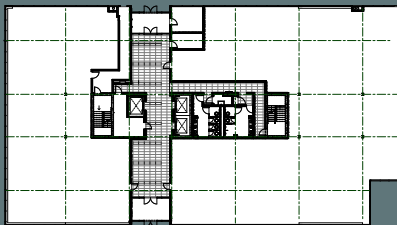
Size:	101,000 SF
# Floors:	5
Typical Floor:	20,000 SF
Ceiling Height:	10' Below Grid

- ★ Opportunity for building identity & signage
- ★ Walk to restaurants, banks, fitness centers and Whole Foods
- 🅑 Tons of parking!
- ★ New efficient plate & systems
- ★ Ready for high-density users
- ★ Adjacent to park and walking trails
- ★ Abundant employee housing nearby
- ★ **Fully entitled, designed and approved!**

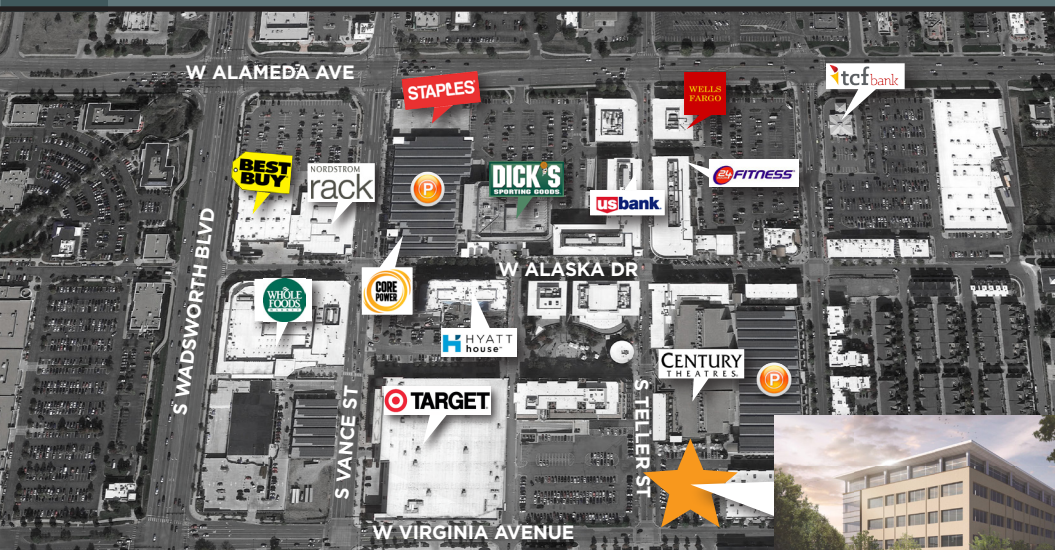
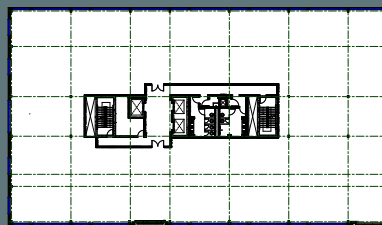


Sample Floorplates

1st Floor



3rd Floor



**Todd Wheeler**  
Vice Chairman  
+1 303 813 6441  
todd.wheeler@cushwake.com

**Dan Beer**  
Director, Office Agency Leasing  
+1 303 813 6494  
dan.beer@cushwake.com



1515 Arapahoe Street, Suite 1200  
Denver, Colorado 80202

T +1 303 292 3700  
F +1 303 534 8270

cushmanwakefield.com