

FOR LEASE
814 SAN JACINTO
AUSTIN, TEXAS 78701



SPACE AVAILABLE 697 RSF - 4,814 RSF

PROPERTY HIGHLIGHTS

LEASE TERM

1-2 Years

NET RENTAL RATE

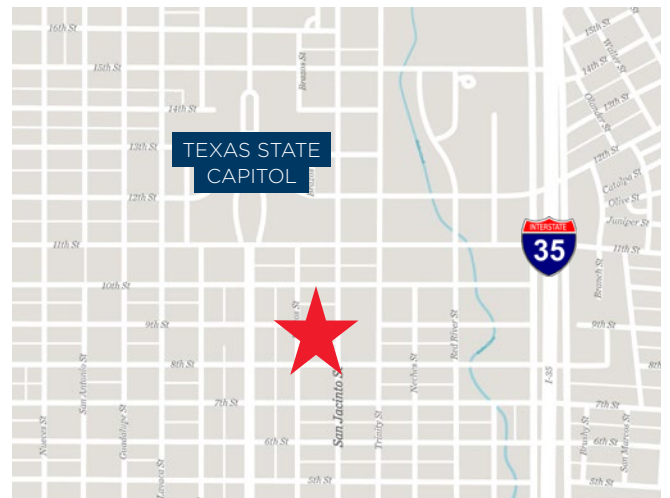
\$16.00 - \$18.00/RSF/YR
3% Annual Bumps

OPERATING EXPENSES

2023 Estimate - \$12.45 sf/yr

TENANT IMPROVEMENTS

Negotiable



FOR LEASE

814 SAN JACINTO

AUSTIN, TEXAS 78701



LOCATION & PROPERTY

PROPERTY FEATURES

- Attached Garage: 3:1,000 Ratio
\$175/Mo. Unreserved
- Building Conference Room
- Shower
- Bike Storage
- 3 Blocks From State Capitol
- Great Access To Walkable Amenities (See Amenity Map)

SPACE AVAILABLE

- Suite 200 - 1,524 RSF
- Suite 201 - 1,541 RSF
- Suite 206 - 2,296 RSF
- Suite 300 - 2,122 RSF
- Suite 301 - 1,664 RSF
- Suite 302 & 304 - 2,623 RSF**
- Suite 303 - 880 RSF
- Suite 307 - 2,270 RSF
- Suite 403 - 3,403 RSF*
- Suite 409 - 1,398 RSF*

*Contiguous (See Floor Plan)

**Divisible

Dead File Storage Available

- Room 1: Approx. 255 SF (15'x17') - \$319/mo
- Rooms 2: Approx. 160 SF (10'x16") - \$200/mo
- Rooms 2: Approx. 160 SF (10'x16") - \$200/mo



For more information, please contact:

MARK GREINER
Executive Director

+1 512 474 2400
Mark.Greiner@cushwake.com

MELISSA TOTTEN
Director

+1 512 474 2400
Melissa.Totten@cushwake.com

200 W Cesar Chavez, Suite 250
Austin, Texas 78701

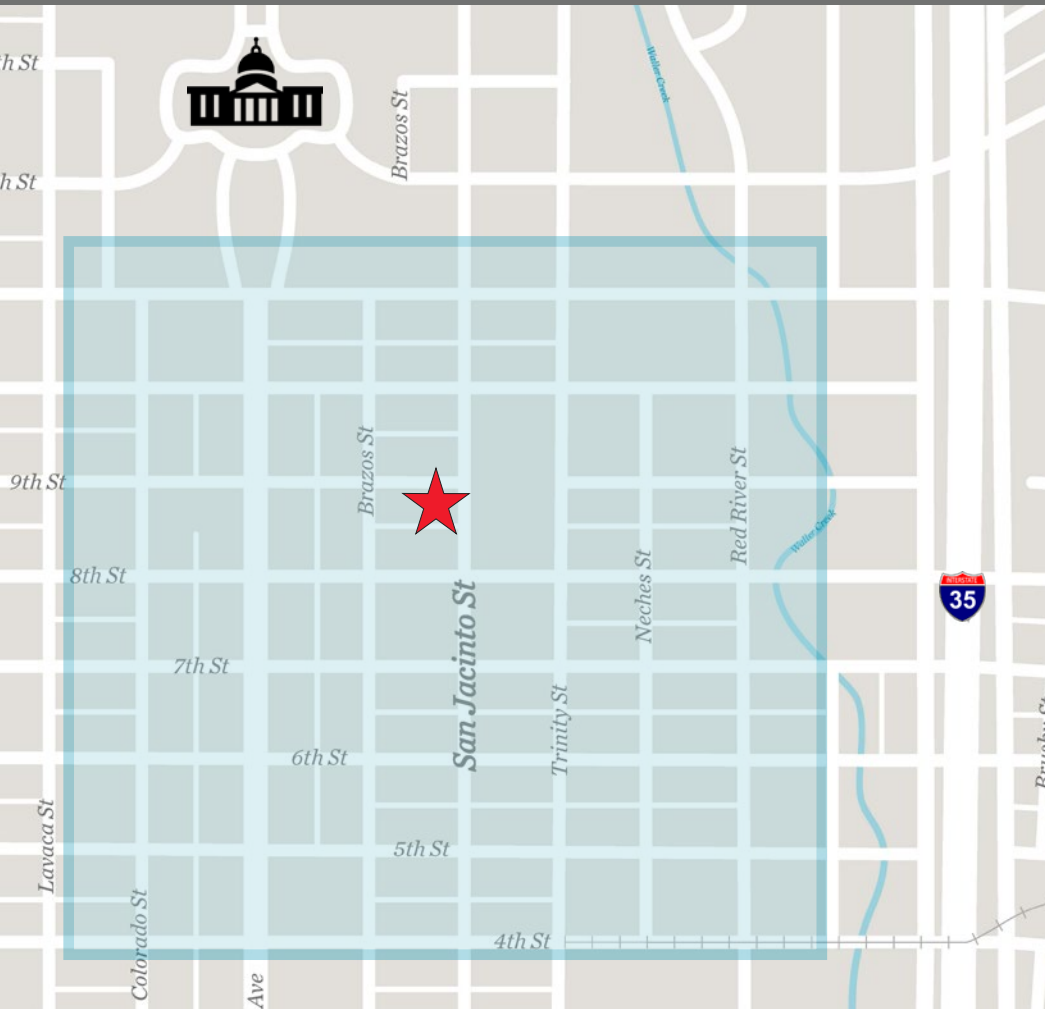
T +1 512 474 2400
F +1 512 477 3037

cushmanwakefield.com

FOR LEASE
814 SAN JACINTO
 AUSTIN, TEXAS 78701



AREA AMENITIES



RESTAURANT/COFFEE SHOPS:



BANKS & SERVICES



HOTELS



ENTERTAINMENT



For more information, please contact:

MARK GREINER
 Executive Director
 +1 512 474 2400
 Mark.Greiner@cushwake.com

MELISSA TOTTEN
 Director
 +1 512 474 2400
 Melissa.Totten@cushwake.com

200 W Cesar Chavez, Suite 250
 Austin, Texas 78701

T +1 512 474 2400
 F +1 512 477 3037

cushmanwakefield.com

© 2020 Cushman & Wakefield. All rights reserved. The information contained in this communication is strictly confidential. This information has been obtained from sources believed to be reliable but has not been verified. NO WARRANTY OR REPRESENTATION, EXPRESS OR IMPLIED, IS MADE AS TO THE CONDITION OF THE PROPERTY (OR PROPERTIES) REFERENCED HEREIN OR AS TO THE ACCURACY OR COMPLETENESS OF THE INFORMATION CONTAINED HEREIN, AND SAME IS SUBMITTED SUBJECT TO ERRORS, OMISSIONS, CHANGE OF PRICE, RENTAL OR OTHER CONDITIONS, WITHDRAWAL WITHOUT NOTICE, AND TO ANY SPECIAL LISTING CONDITIONS IMPOSED BY THE PROPERTY OWNER(S). ANY PROJECTIONS, OPINIONS OR ESTIMATES ARE SUBJECT TO UNCERTAINTY AND DO NOT SIGNIFY CURRENT OR FUTURE PROPERTY PERFORMANCE.

2ND FLOOR



For more information, please contact:

MARK GREINER
Executive Director
+1 512 474 2400
Mark.Greiner@cushwake.com

MELISSA TOTTEN
Director
+1 512 474 2400
Melissa.Totten@cushwake.com

200 W Cesar Chavez, Suite 250
Austin, Texas 78701

T +1 512 474 2400
F +1 512 477 3037

cushmanwakefield.com

FOR LEASE
814 SAN JACINTO
AUSTIN, TEXAS 78701



3RD FLOOR



For more information, please contact:

MARK GREINER
Executive Director
+1 512 474 2400
Mark.Greiner@cushwake.com

MELISSA TOTTEN
Director
+1 512 474 2400
Melissa.Totten@cushwake.com

200 W Cesar Chavez, Suite 250
Austin, Texas 78701

T +1 512 474 2400
F +1 512 477 3037

cushmanwakefield.com

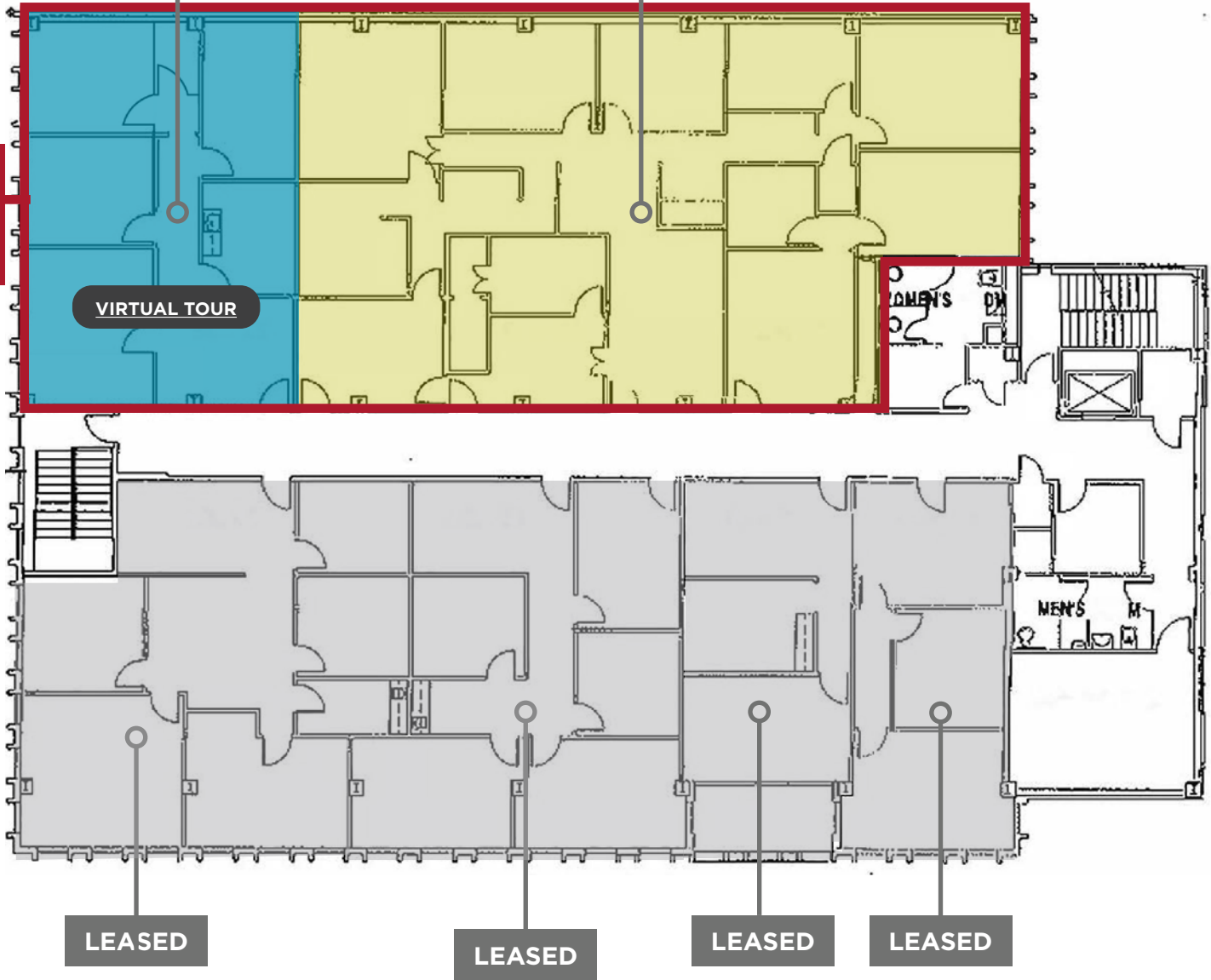
4TH FLOOR

VACANT
Suite 409
1,398 RSF

VACANT
Suite 403
3,403 RSF

Total
Suite
403 & 409
4,801 RSF

VIRTUAL TOUR



For more information, please contact:

MARK GREINER
Executive Director
+1 512 474 2400
Mark.Greiner@cushwake.com

MELISSA TOTTEN
Director
+1 512 474 2400
Melissa.Totten@cushwake.com

200 W Cesar Chavez, Suite 250
Austin, Texas 78701

T +1 512 474 2400
F +1 512 477 3037

cushmanwakefield.com