



FOR LEASE

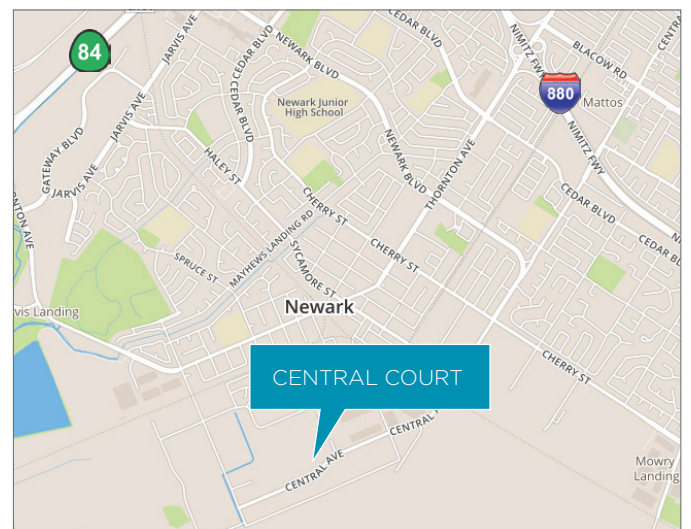
CENTRAL COURT

37500-37600 CENTRAL COURT, NEWARK, CA



PROPERTY HIGHLIGHTS

- Office and Industrial Units
- Newly Remodeled Common Areas and Atrium
- Common Breakroom
- Building Power: 21 kV / 12,000 Amp at 480/277 Volts
- Great Central Location with Easy Access to Highway 880 and Highway 101 via the Dumbarton Bridge



Scott Dever
Managing Director
+1 408 615 3457
scott.dever@cushwake.com
LIC #01890552

300 Santana Row, Fifth Floor
San Jose, CA 95128
main +1 408 615 3400

cushmanwakefield.com



**CUSHMAN &
WAKEFIELD**

FOR LEASE

CENTRAL COURT

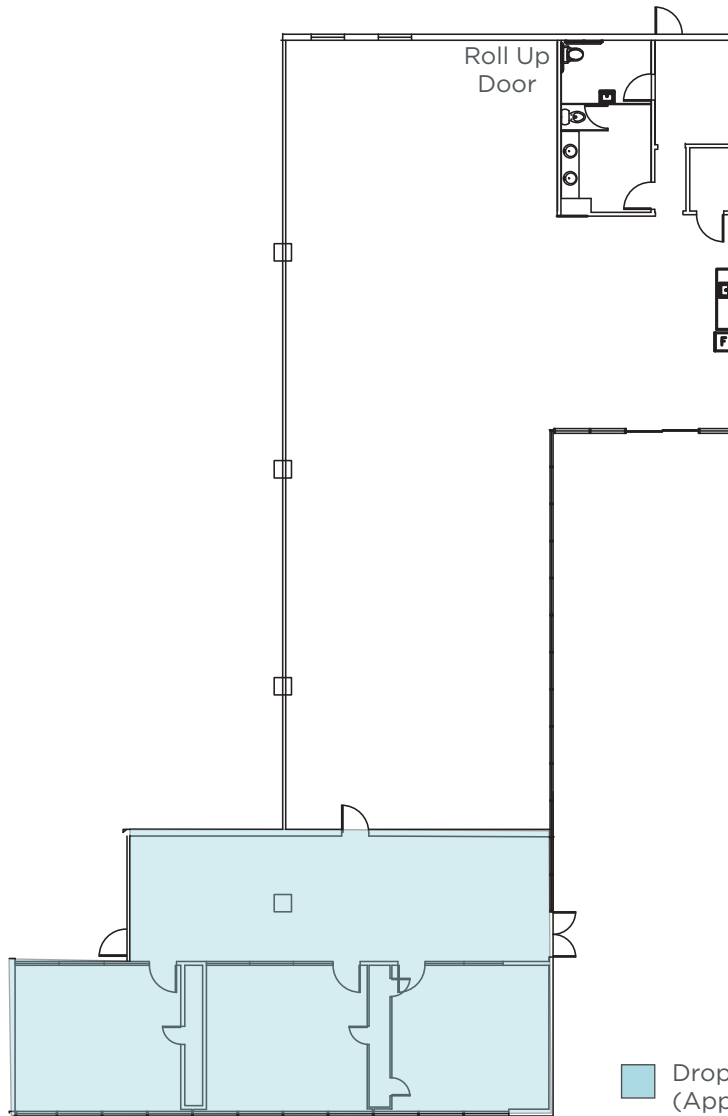
37500-37600 CENTRAL COURT, NEWARK, CA


FLOOR PLAN

37500 CENTRAL COURT

Ground Floor Industrial/R&D Unit

±5,161 SF



 Dropped Ceiling HVAC Office Area
(Approx. 25% of leased area)

Scott Dever
Managing Director
+1 408 615 3457
scott.dever@cushwake.com
LIC #01890552

300 Santana Row, Fifth Floor
San Jose, CA 95128
main +1 408 615 3400

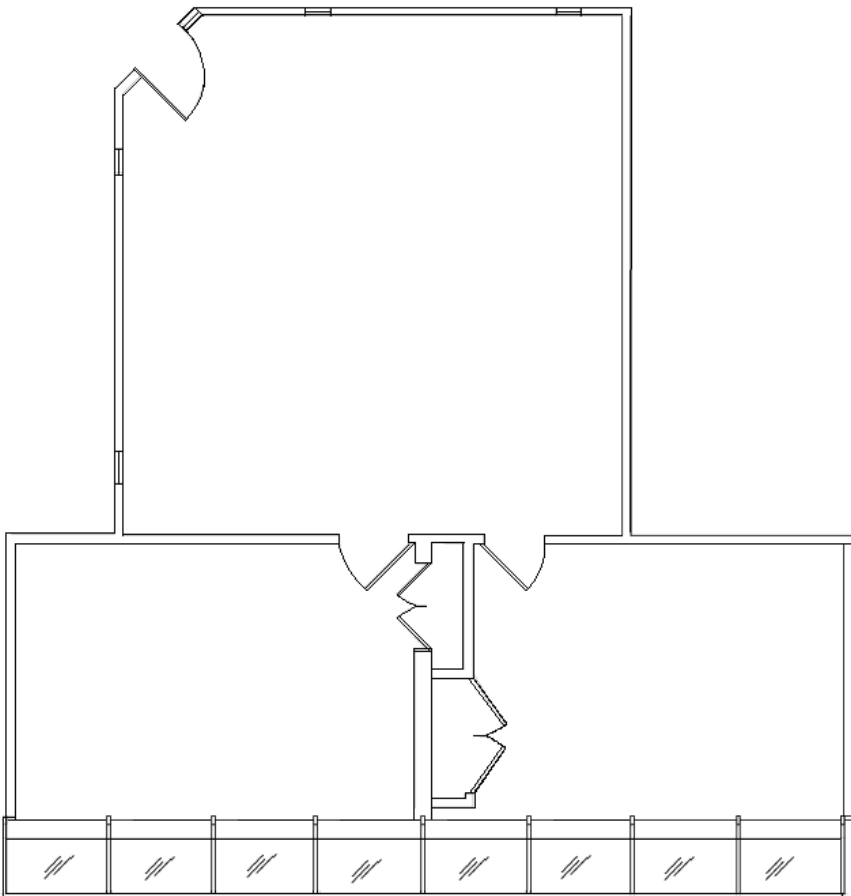
cushmanwakefield.com

FLOOR PLAN

37600 CENTRAL COURT

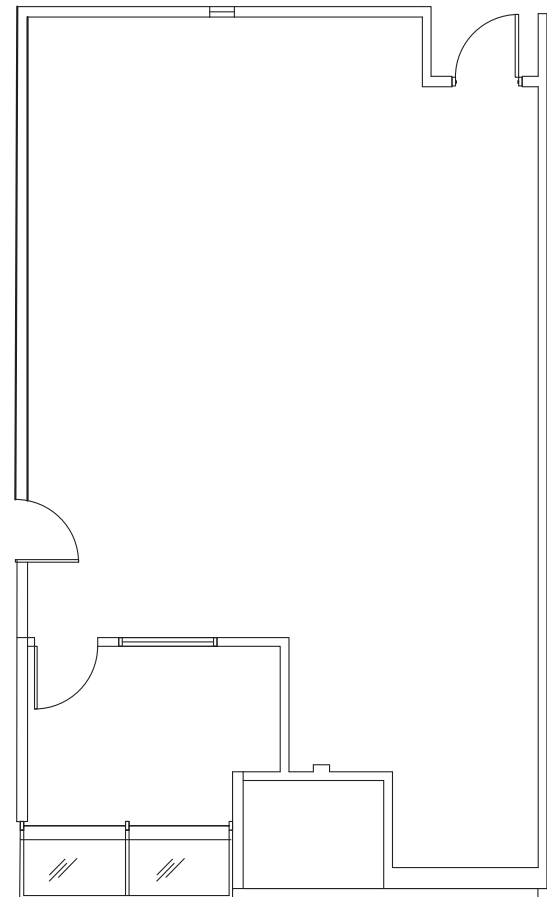
Second Floor Office Units

Suite 202 | ±1,304 SF



Suite 214 | ±1,156 SF

Available June 1, 2024



Scott Dever
Managing Director
+1 408 615 3457
scott.dever@cushwake.com
LIC #01890552

300 Santana Row, Fifth Floor
San Jose, CA 95128
main +1 408 615 3400

cushmanwakefield.com