

The Offices at Public Market

**6001**

**SHELLMOUND**

*Emeryville, California*



# Property Highlights



Class A Emeryville Office Space



First Class On-Site Amenities



Immediate Access to Interstate 80/580,  
Providing Direct Access to San Francisco  
& Oakland



Emery Go-Round Stop On-Site  
with Direct Shuttle to Bart



Walking Distance to Emeryville  
Amtrak Station



Unobstructed Panoramic Views of San  
Francisco Bay & Berkeley Hills



Abundant Natural Light & Generous  
Ceiling Heights

## UNMATCHED ON-SITE AMENITIES

Immediate access to The Public Market offers convenience at it's best. Enjoy artisan food, shop the look of the season, take a fitness class, or schedule a haircut. It's all available right next door.



More info on page 10

# Current *Availabilities*

**SUITE 200** ±15,615 SF (FULL FLOOR)

**SUITE 400** ±6,305 SF

**SUITE 425** ±3,185 SF

**SUITE 625** ±4,346 SF

**SUITE 850** ±4,632 SF

**SUITE 875** ±6,423 RSF



# Floor Plan

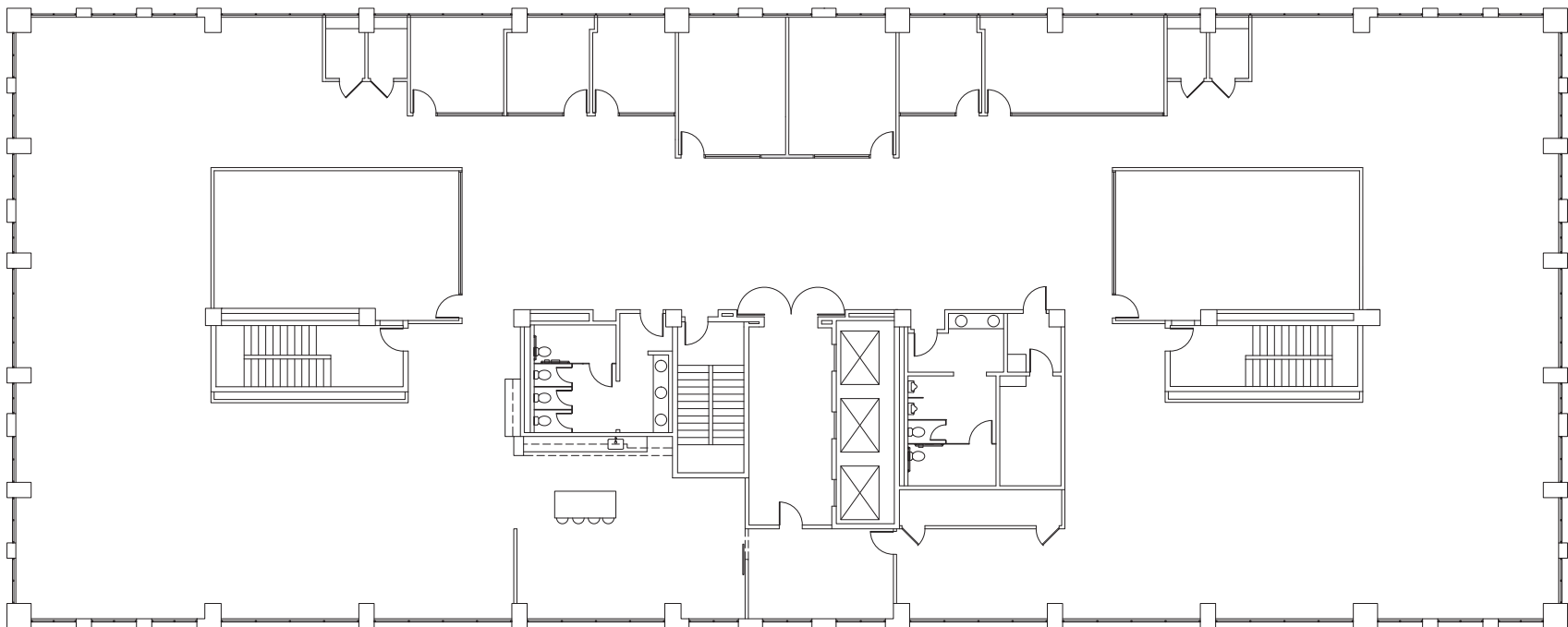
*Suite 200*

15,615 RSF

- Entire Second Floor
- Full Floor Identity with New Build Out
- Great Natural Light
- Mix of Private Offices & Large Conference Rooms
- Large Open "All Hands" Kitchen Area

360° Virtual Tour

San Francisco Bay View



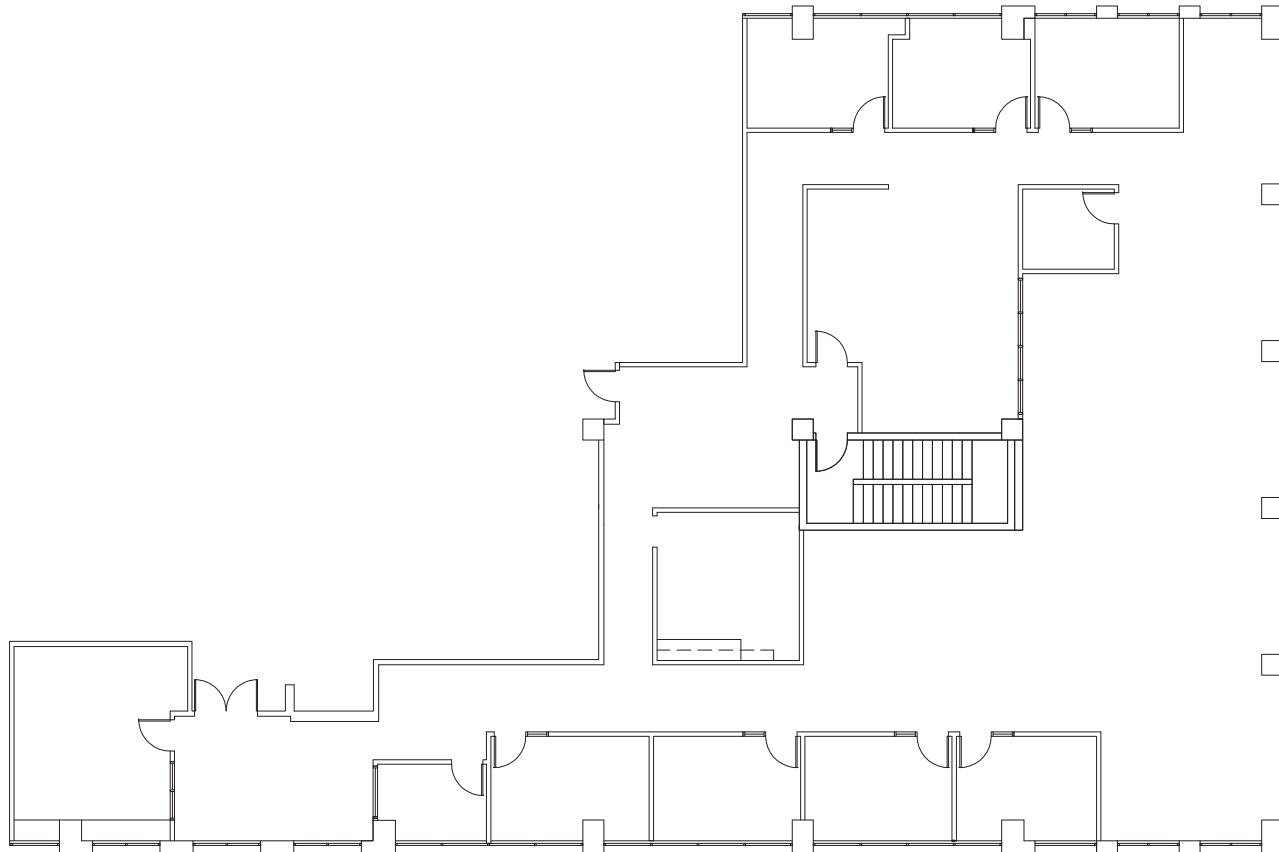
Berkeley Hills View

# Floor Plan

Suite 400 | 6,305 RSF

- Seven Private Offices
- Large Conference Room
- Kitchen
- Large Production/Work Room
- Berkeley Hills & Bay Views
- Double Door Entry off Elevator Lobby
- Three Sides of Glass Offering Great Natural Light

San Francisco Bay View

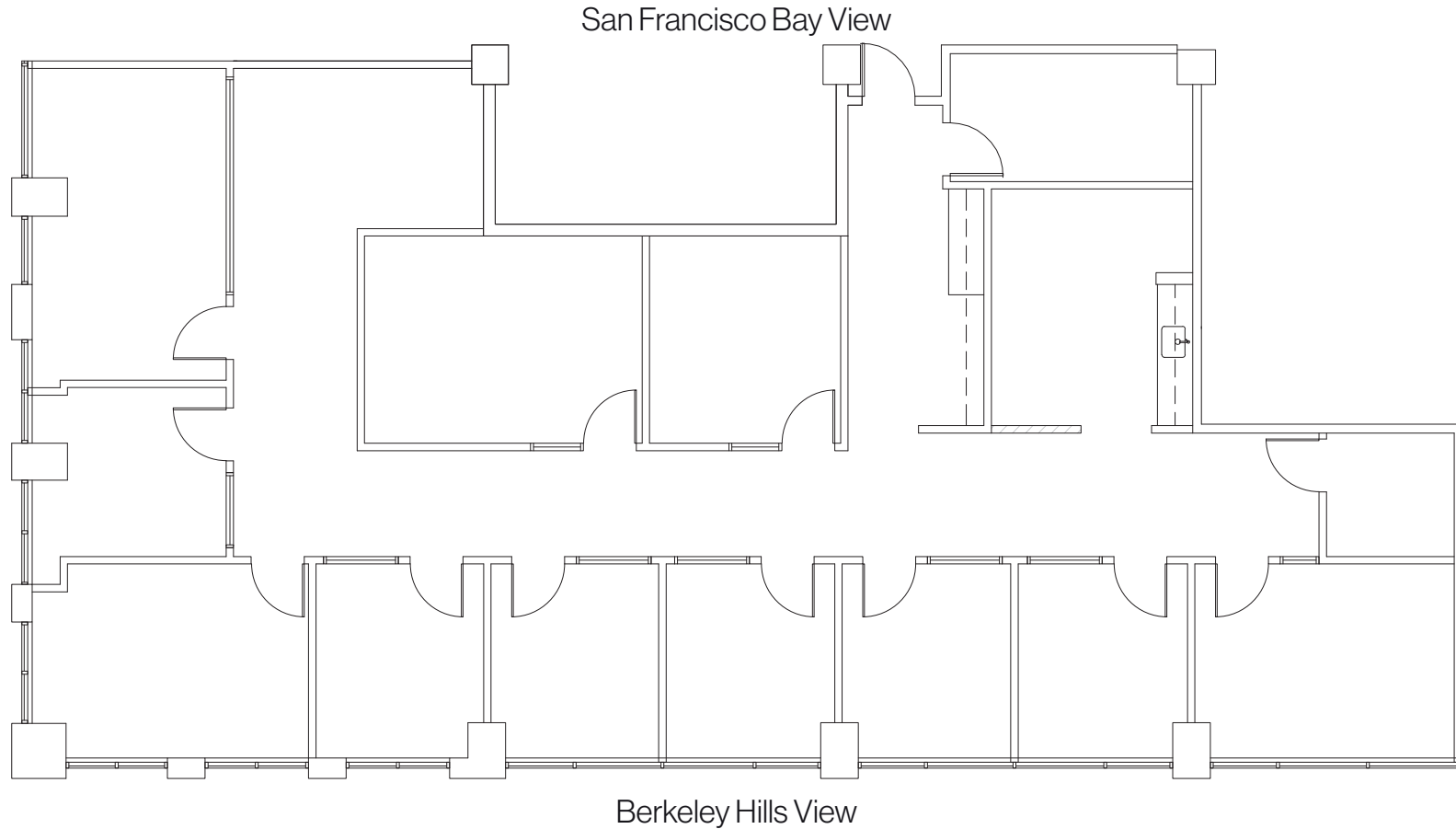


Berkeley Hills View

# Floor Plan

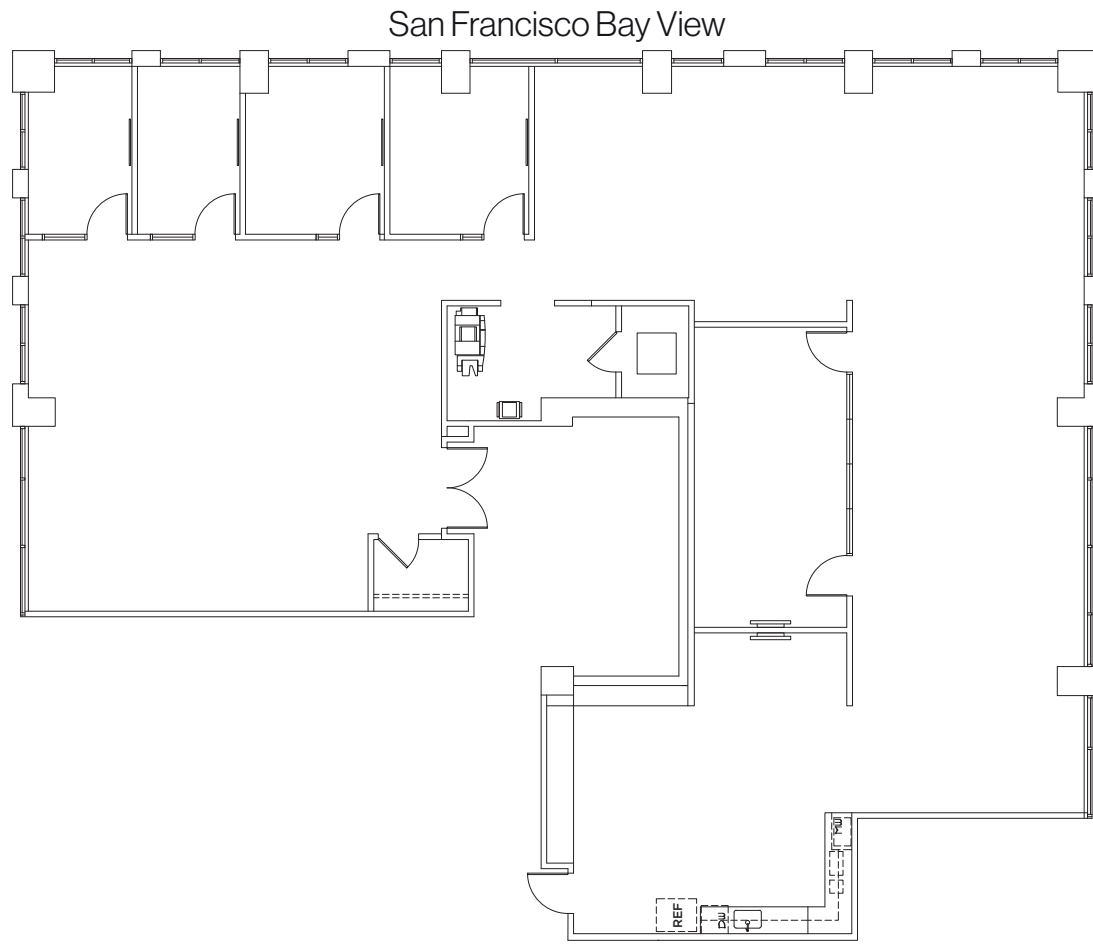
*Suite 425* 3,185 RSF

- 9 Private Offices
- Small Conference Room
- Large Conference Room
- Kitchen
- Berkeley Hills and Downtown Oakland Views



# Floor Plan

*Suite 625* 4,346 RSF



Berkeley Hills View

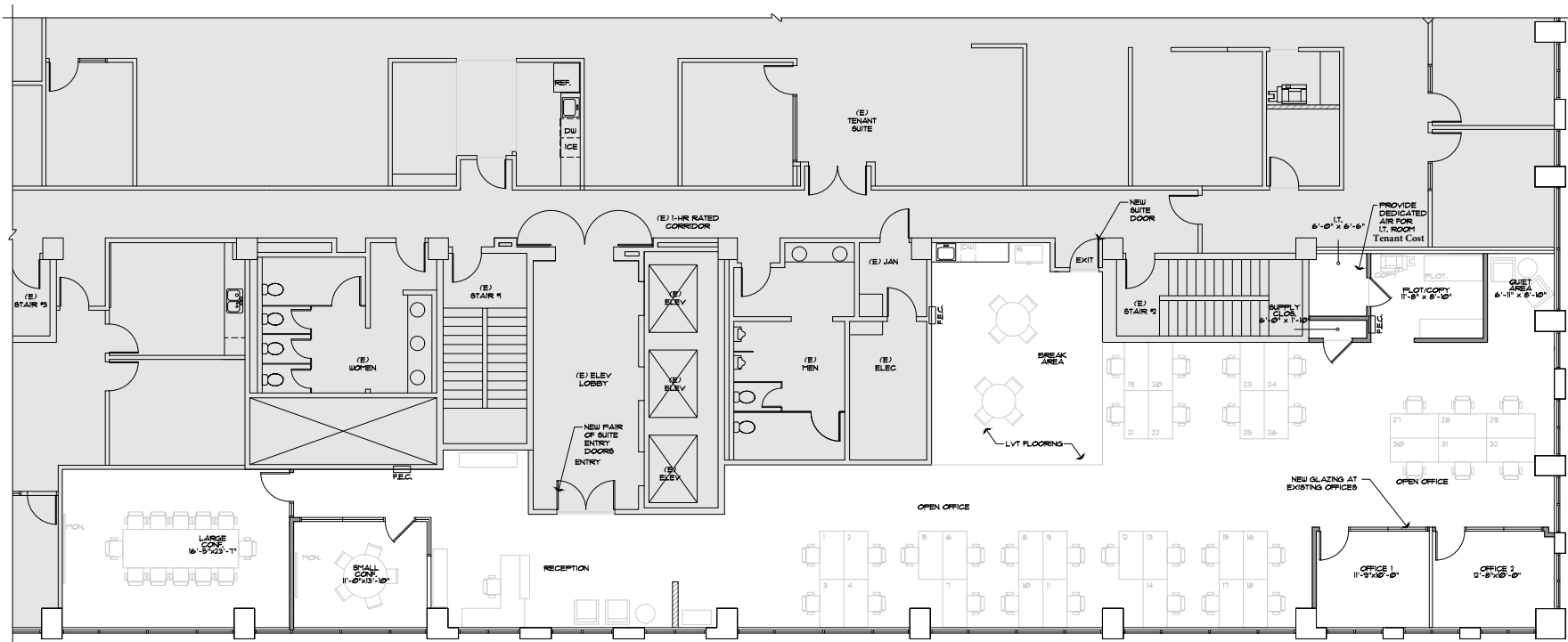
- Dramatic Views with 3 Sides of Glass
- 2 Offices
- 2 Huddle Rooms
- Large Conference Room
- Server Room
- Open Kitchen

# Floor Plan

Suite 850 | 4,632 RSF

- New Build Out
- Title 24 Compliant Space with LED Lighting Throughout
- 2 Offices
- Large Conference Room
- Small Conference Room
- Open Kitchen/Break Area
- Copy/Workroom

San Francisco Bay View



Berkeley Hills View



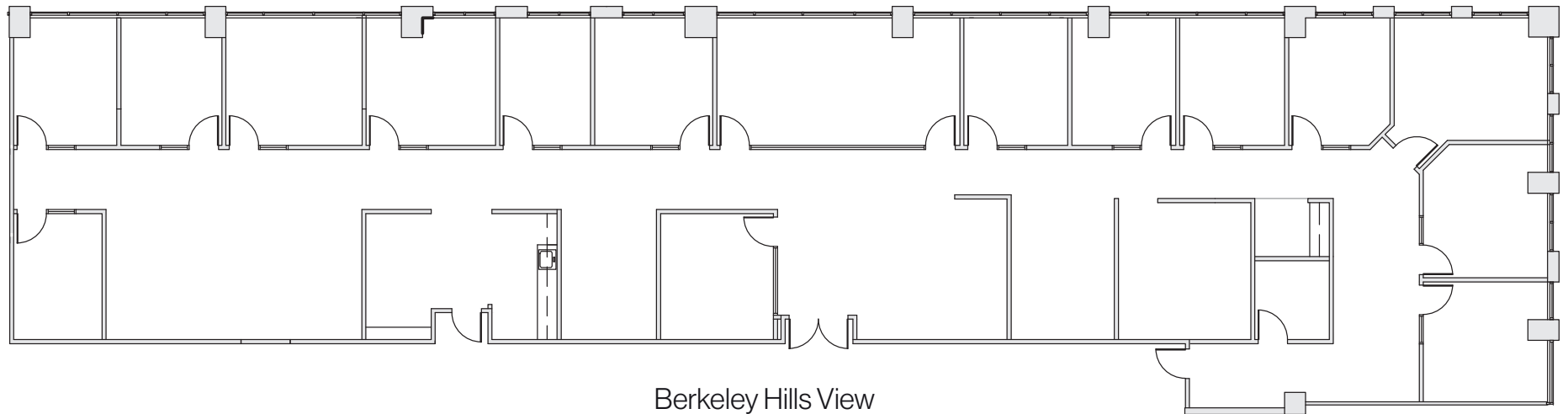
# Floor Plan

*Suite 8751*

6,423 RSF

- Spectacular Bay Views
- 13 Window Line Private Offices
- Large Conference Room
- Small Conference Room
- Kitchen/Break Room
- File Storage
- Server Room

San Francisco Bay View



Berkeley Hills View

# Nearby Amenities



## Food

- |                       |                            |
|-----------------------|----------------------------|
| 1 Hong Kong East      | 15 Branch Line Pub         |
| 2 Trader Vic's        | 16 Summer Summer Thai      |
| 3 Chevy's             | 17 Townhouse               |
| 4 Rotten City Pizza   | 18 The Bureau 510          |
| 5 Jasmine Blossom     | 19 Best Coast Burritos     |
| 6 Los Moles           | 20 Honor Kitchen           |
| 7 Espresso Roma       | 21 Ike's Love & Sandwiches |
| 8 Mujiri              | 22 Gobi Mongolian Grill    |
| 9 Starbucks           | 23 Black Bear Diner        |
| 10 KYU2 Sushi         | 24 Togo's Sandwiches       |
| 11 Paradise Park Café | 25 PF Chang's              |
| 12 Black Diamond Café | 26 Rudy's Can't Fail       |
| 13 Ruby's Café        | 27 Ramen 101               |
| 14 Donut Farm         | 28 Panda Express           |

## Retail

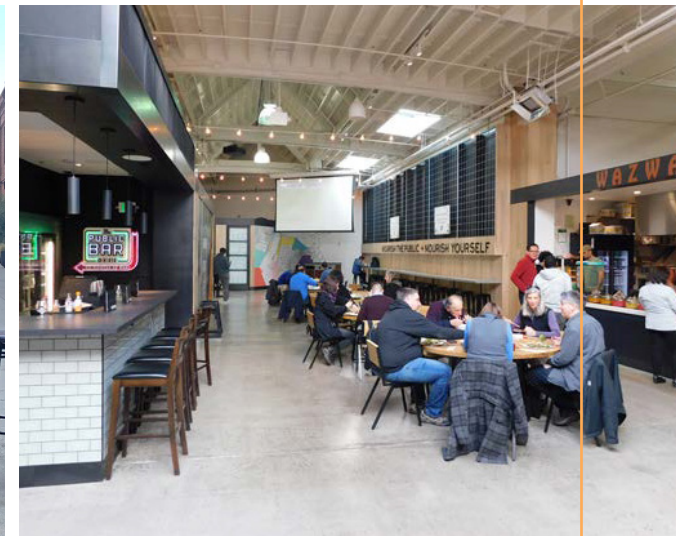
- |                           |                   |
|---------------------------|-------------------|
| 1 The UPS Store           | 14 West Elm       |
| 2 FedEx Office            | 15 Uniqlo         |
| 3 Marshall's              | 16 IKEA           |
| 4 Banana Republic Factory | 17 CVS Pharmacy   |
| 5 Old Navy                | 18 Target         |
| 6 Trader Joe's            | 19 Best Buy       |
| 7 Ross                    | 20 Office Depot   |
| 8 BevMo                   | 21 Pet Club       |
| 9 Vans                    | 22 The Home Depot |
| 10 Apple Store            | 23 Ulta Beauty    |
| 11 Bay Street Emeryville  | 24 Nordstrom Rack |
| 12 H&M                    | 25 Safeway        |
| 13 Sephora                |                   |

## The Public Market

- |  |                             |
|--|-----------------------------|
| Guitar Center                          | Konarq                      |
| Urban Outfitters                       | Minnie Bell's Soul Movement |
| OrangeTheory Fitness                   | Mr. Dewie's Cashew Creamery |
| Bruce's Barbershop                     | NabiQ                       |
| Emeryville Dental Care                 | Naru Sushi                  |
| Emeryville Occupational Medical Center | Paradita Eatery             |
| The Lounge Nail Spa                    | Peet's Coffee and Tea       |
| A Girl Named Pinky                     | Pig in a Pickle             |
| Baby Cafe                              | Pizzeria Mercato            |
| C CASA                                 | Public Bar by Blush         |
| Calypso Rose - Coming Soon             | Shiba Ramen                 |
| Jayna Gyro                             | Super Duper Burgers         |
| Koja Kitchen                           | The Periodic Table          |

## Hotels

- |                           |                 |
|---------------------------|-----------------|
| 1 Hilton Garden Inn       | 4 Hyatt Place   |
| 2 Four Points by Sheraton | 5 Royal Sonesta |
| 3 Hyatt House             |                 |

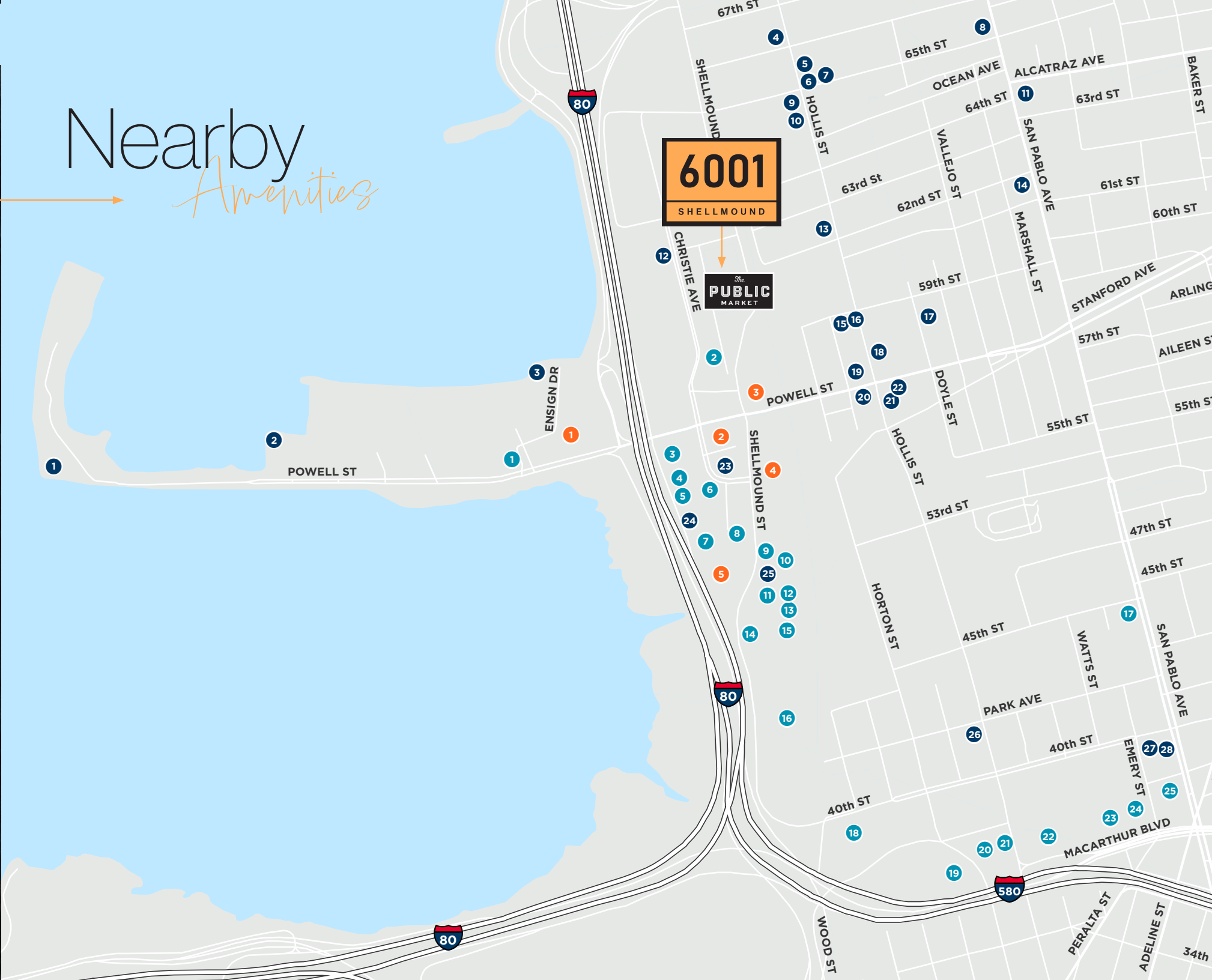


Continued on Page 11...

# Nearby Amenities

**6001**  
SHELLMOUND

**The PUBLIC MARKET**



# Current Tech Specs

## Telecommunications Solutions

Available	Notes
In-Building Service Providers	Yes AT&T, Comcast, and Paxio
T1, DSL, Copper based circuits	Yes AT&T
DS3, OC3, and Ethernet services, Fiber Optic based circuits	Yes Level 3 & AT&T fiber serves the building

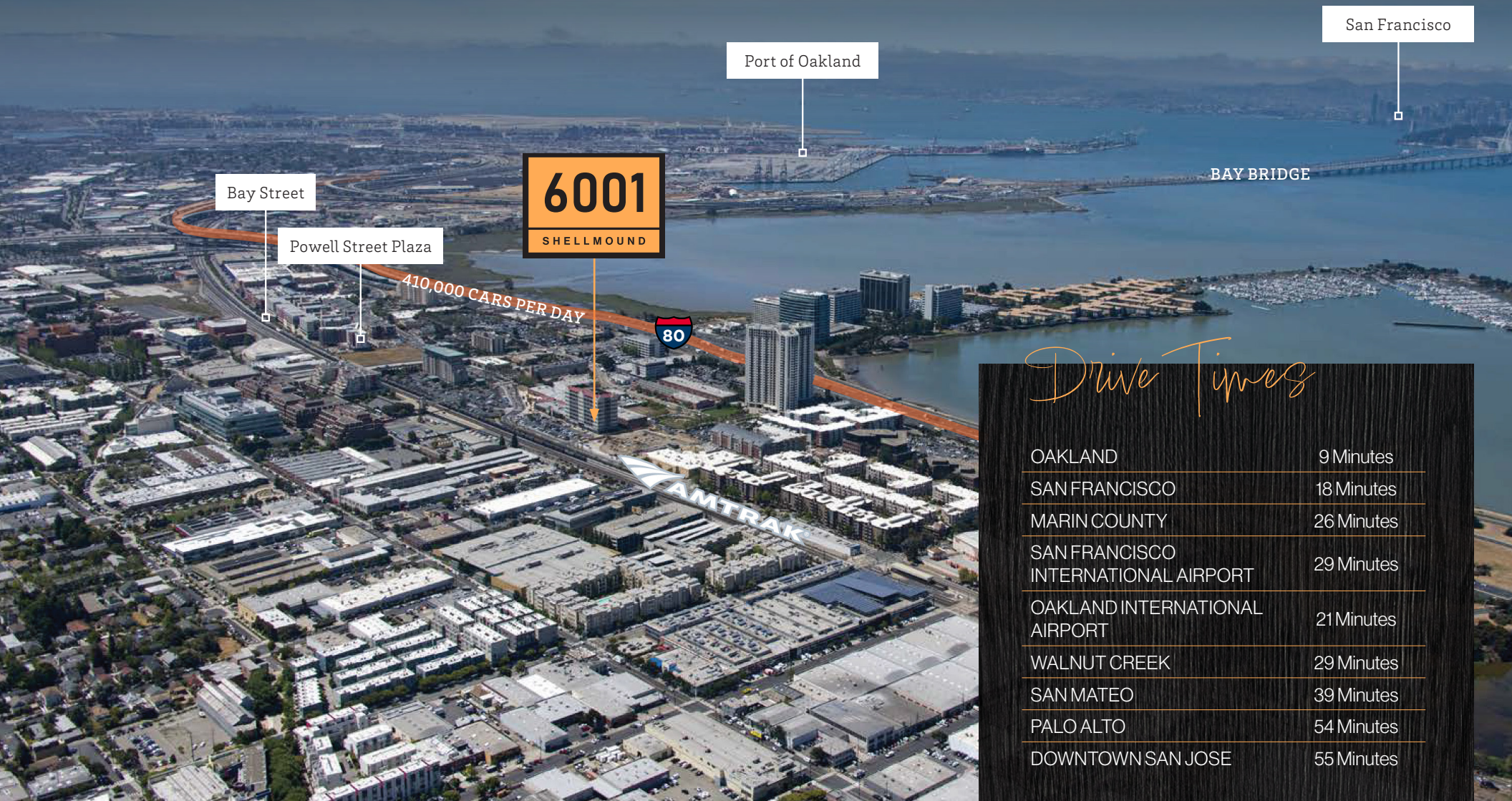
## TV Services

In-Building	Notes
Cable	Yes Comcast Television Services

## Telecom & Wiring Infrastructure

In-Building	Notes
Riser System wiring infrastructure	Multi-Tenant Ready Primary distribution to all tenant occupied floors ready for use for voice/DSL/T1 services. Additionally the building has fiber optic cabling available for tenants and service providers.
Incoming Copper Pairs/Lines for voice, DSL and T1 services	Yes AT&T has more than enough capacity to serve tenants voice and data requirements.
Minimum Point of Entry & Telecom Closets	Minimum Point of Entry (MPOE), the building has one MPOE located on the ground floor. The main riser system is offset from the MPOE and all telecom closets are stacked.

# Central *Bay Area Location*



**6001**  
SHELLMOUND

410,000 CARS PER DAY



Bay Street

Powell Street Plaza

Port of Oakland

San Francisco

BAY BRIDGE



## *Drive Times*

OAKLAND	9 Minutes
SAN FRANCISCO	18 Minutes
MARIN COUNTY	26 Minutes
SAN FRANCISCO INTERNATIONAL AIRPORT	29 Minutes
OAKLAND INTERNATIONAL AIRPORT	21 Minutes
WALNUT CREEK	29 Minutes
SAN MATEO	39 Minutes
PALO ALTO	54 Minutes
DOWNTOWN SAN JOSE	55 Minutes

# Nearby Transportation

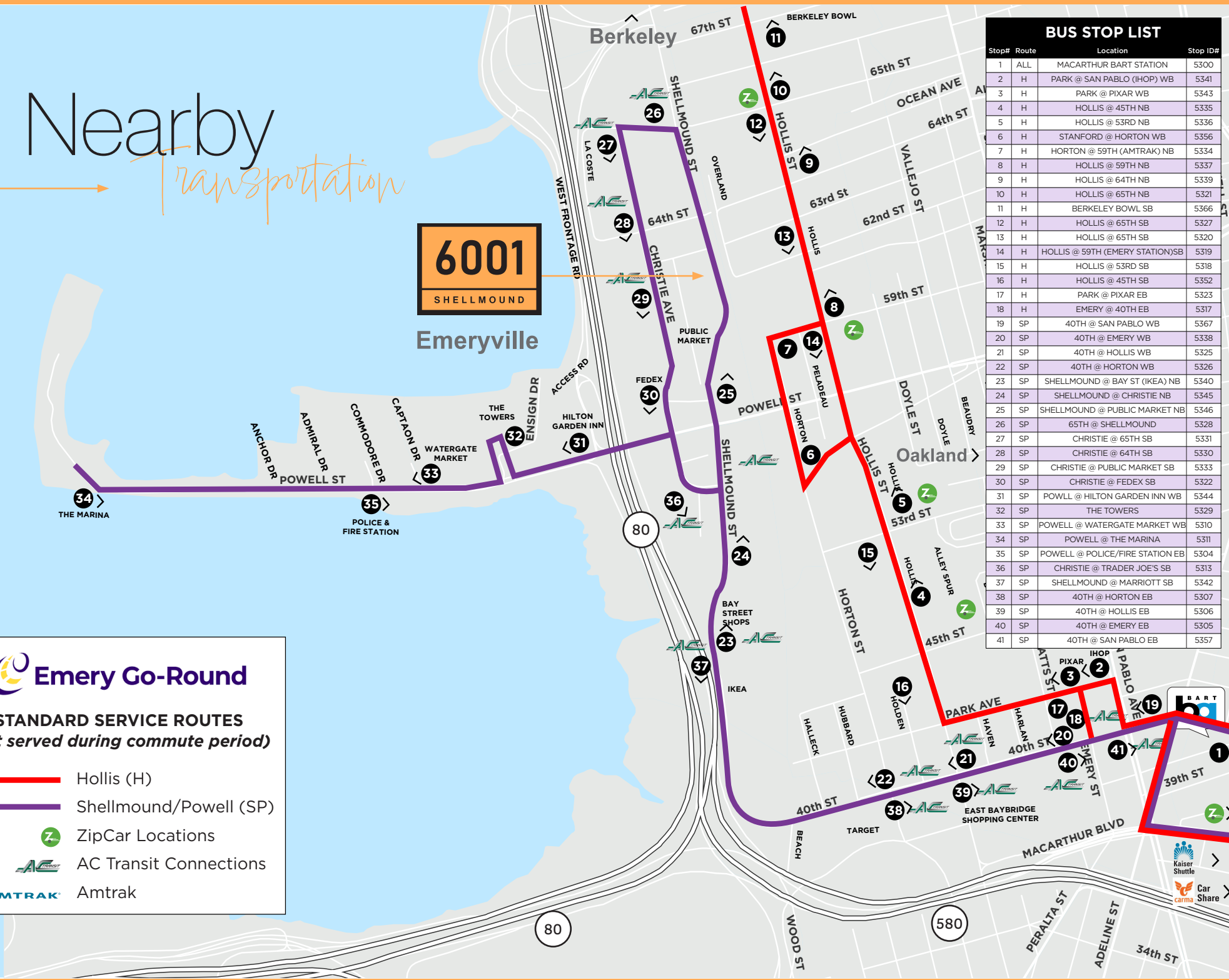
**6001**  
SHELLMOUND

Stop#	Route	Location	Stop ID#
1	ALL	MACARTHUR BART STATION	5300
2	H	PARK @ SAN PABLO (IHOP) WB	5341
3	H	PARK @ PIXAR WB	5343
4	H	HOLLIS @ 45TH NB	5335
5	H	HOLLIS @ 53RD NB	5336
6	H	STANFORD @ HORTON WB	5356
7	H	HORTON @ 59TH (AMTRAK) NB	5334
8	H	HOLLIS @ 59TH NB	5337
9	H	HOLLIS @ 64TH NB	5339
10	H	HOLLIS @ 65TH NB	5321
11	H	BERKELEY BOWL SB	5366
12	H	HOLLIS @ 65TH SB	5327
13	H	HOLLIS @ 65TH SB	5320
14	H	HOLLIS @ 59TH (EMERY STATION)SB	5319
15	H	HOLLIS @ 53RD SB	5318
16	H	HOLLIS @ 45TH SB	5352
17	H	PARK @ PIXAR EB	5323
18	H	EMERY @ 40TH EB	5317
19	SP	40TH @ SAN PABLO WB	5367
20	SP	40TH @ EMERY WB	5338
21	SP	40TH @ HOLLIS WB	5325
22	SP	40TH @ HORTON WB	5326
23	SP	SHELLMOUND @ BAY ST (IKEA) NB	5340
24	SP	SHELLMOUND @ CHRISTIE NB	5345
25	SP	SHELLMOUND @ PUBLIC MARKET NB	5346
26	SP	65TH @ SHELLMOUND	5328
27	SP	CHRISTIE @ 65TH SB	5331
28	SP	CHRISTIE @ 64TH SB	5330
29	SP	CHRISTIE @ PUBLIC MARKET SB	5333
30	SP	CHRISTIE @ FEDEX SB	5322
31	SP	POWELL @ HILTON GARDEN INN WB	5344
32	SP	THE TOWERS	5329
33	SP	POWELL @ WATERGATE MARKET WB	5310
34	SP	POWELL @ THE MARINA	5311
35	SP	POWELL @ POLICE/FIRE STATION EB	5304
36	SP	CHRISTIE @ TRADER JOE'S SB	5313
37	SP	SHELLMOUND @ MARRIOTT SB	5342
38	SP	40TH @ HORTON EB	5307
39	SP	40TH @ HOLLIS EB	5306
40	SP	40TH @ EMERY EB	5305
41	SP	40TH @ SAN PABLO EB	5357

**Emery Go-Round**

**STANDARD SERVICE ROUTES**  
*(not served during commute period)*

- Hollis (H)
- Shellmound/Powell (SP)
- Z ZipCar Locations
- AC Transit Connections
- Amtrak



The Offices at Public Market

6001

SHELLMOUND

*Emeryville, California*

GRANT JONES

[grant.a.jones@cushwake.com](mailto:grant.a.jones@cushwake.com)

+1 415 317 4646

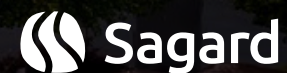
CA License 01743255

DAVID ENGLERT

[david.englert@cushwake.com](mailto:david.englert@cushwake.com)

+1 510 205 8855

CA License 01291709



©2024 Cushman & Wakefield. All rights reserved. The information contained in this communication is strictly confidential. This information has been obtained from sources believed to be reliable but has not been verified. NO WARRANTY OR REPRESENTATION, EXPRESS OR IMPLIED, IS MADE AS TO THE CONDITION OF THE PROPERTY (OR PROPERTIES) REFERENCED HEREIN OR AS TO THE ACCURACY OR COMPLETENESS OF THE INFORMATION CONTAINED HEREIN, AND SAME IS SUBMITTED SUBJECT TO ERRORS, OMISSIONS, CHANGE OF PRICE, RENTAL OR OTHER CONDITIONS, WITHDRAWAL WITHOUT NOTICE, AND TO ANY SPECIAL LISTING CONDITIONS IMPOSED BY THE PROPERTY OWNER(S). ANY PROJECTIONS, OPINIONS OR ESTIMATES ARE SUBJECT TO UNCERTAINTY AND DO NOT SIGNIFY CURRENT OR FUTURE PROPERTY PERFORMANCE. COE-PM-West-01.4.2024