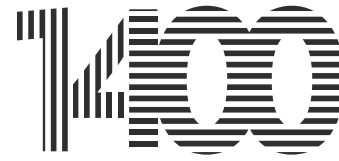


# EmeryTech Center



65TH STREET,  
emeryville



EmeryTech  
1400 65TH STREET

NEW TO MARKET  
AVAILABLE IMMEDIATELY  
FOR SUBLEASE

**RYAN HATTERSLEY**  
Executive Managing Director  
510-891-5802  
ryan.hattersley@cushwake.com  
CA RE License #01354553

**DAVID CULLEN**  
Associate  
510-267-6010  
david.cullen@cushwake.com  
CA RE License #02102633

555 12th Street, Suite 1400, Oakland CA 94607  
1.510.465.8000 | Lic. #00616335  
cushmanwakefield.com



# AVAILABILITY HIGHLIGHTS

**EmeryTech Center**  
**100** 65TH STREET,  
emeryville

The Very Best Creative Space in the Entire East Bay!

## **suites 102 / 202 / 302: ±35,536 RSF**

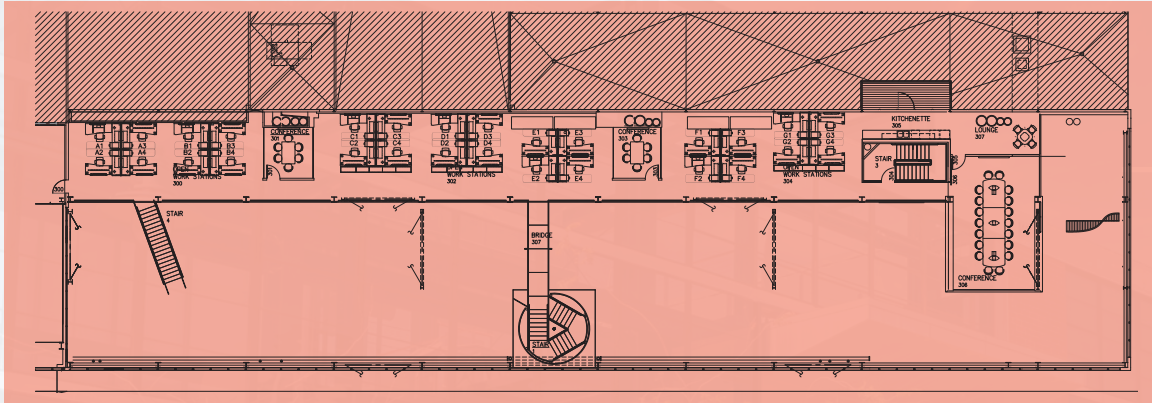
- Spectacular 3-level creative office suite with dramatic interconnecting stairwells and architectural features
- Fully furnished/Plug & Play
- Exceptional natural light and flow throughout the space
- Skylights throughout with 20+ foot ceilings in many areas
- 8/31/2025 LX - Direct deal possible with Landlord
- Credit sublessor
- Suite configuration:
  - 2 levels + mezzanine (all with dramatic interconnecting stairwells)
  - 9 conf rooms of various sizes (several could be offices)
  - 4 phone rooms
  - 1 private office (as currently configured)
  - Kitchen/break areas on each level
  - Main Kitchen/Pantry on level 2
  - +/- 157 workstations
  - Multiple employee lounges spread throughout

## **suite 300: ±4,411 RSF**

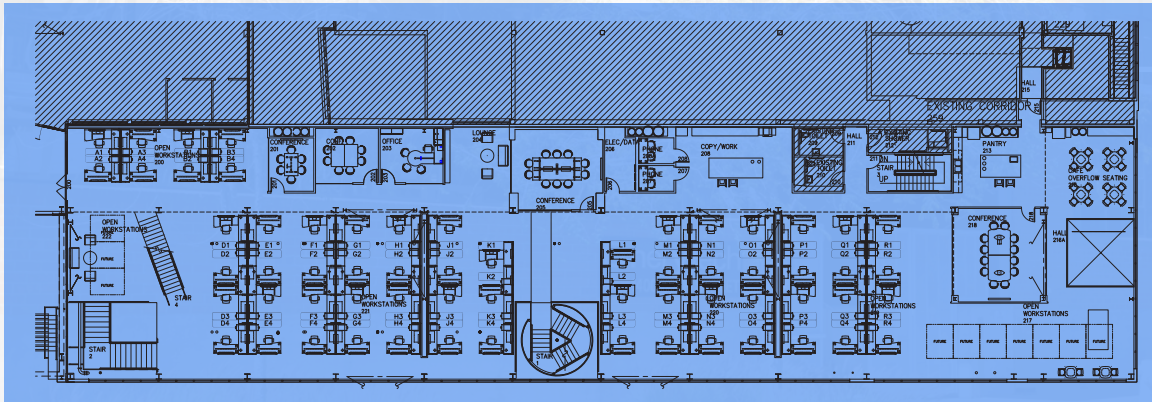
- Creative office suite and partially furnished
- Exceptional natural light
- 8/31/2025 LX - Direct deal possible with Landlord
- Credit sublessor
- Suite configuration:
  - 4 Conference Rooms
  - Kitchen/Break Room
  - Open space for workstations (NIC)
  - Multiple employee lounges spread throughout

# FLOOR PLANS - 35,536 RSF AVAILABLE

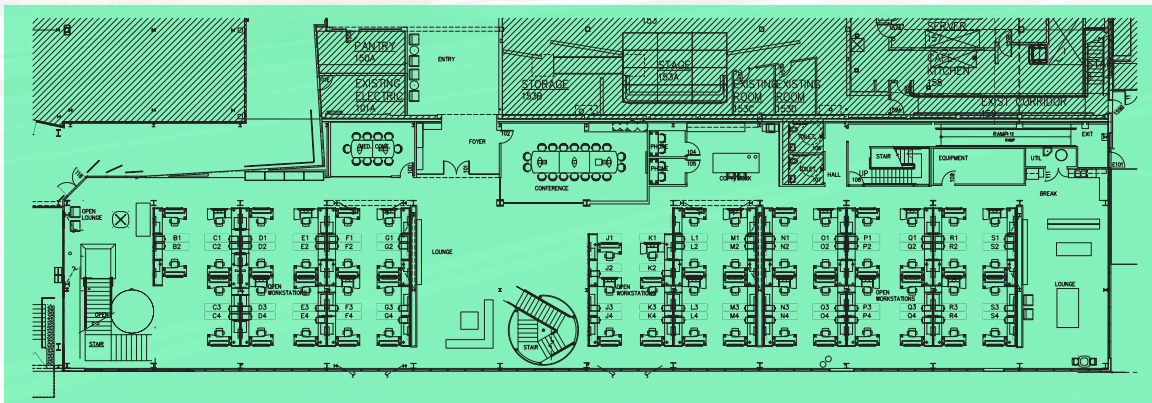
## SUITE 302



## SUITE 202



## SUITE 102





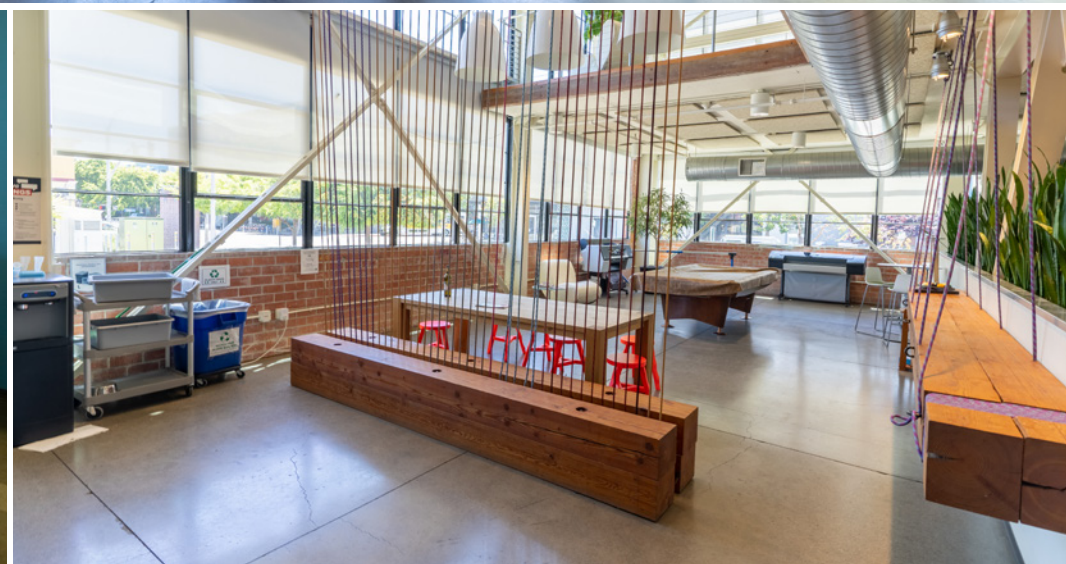
suite 302





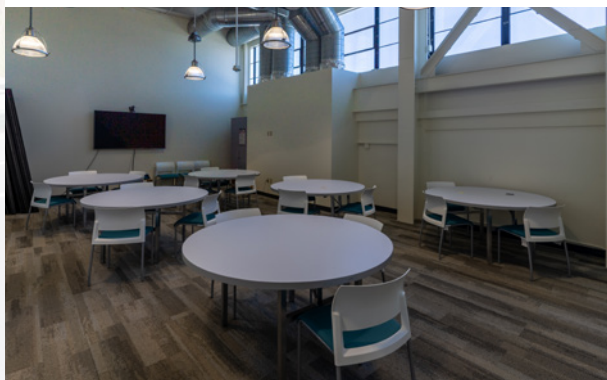
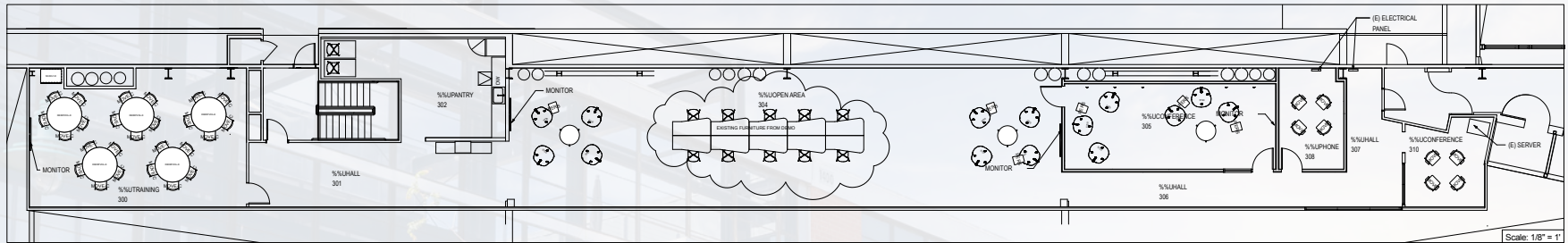
suite 202





# FLOOR PLANS

SUITE 300 - 4,411 RSF AVAILABLE



# COMMUTING HAS NEVER BEEN SO EASY...

**DOWNTOWN  
OAKLAND**

**AMTRAK  
STATION**

**INTERSTATE  
580**

**BAY BRIDGE**

**SAN  
FRANCISCO**

**EMERY GO-ROUND**







# EmeryTech Center



65TH STREET,  
emeryville

## **RYAN** HATTERSLEY

Executive Managing Director

510-891-5802

[ryan.hattersley@cushwake.com](mailto:ryan.hattersley@cushwake.com)

CA RE License #01354553

## **DAVID** CULLEN

Associate

510-267-6010

[david.cullen@cushwake.com](mailto:david.cullen@cushwake.com)

CA RE License #02102633



555 12th Street, Suite 1400, Oakland CA 94607  
1.510.465.8000 | Lic. #00616335  
[cushmanwakefield.com](http://cushmanwakefield.com)

©2022 Cushman & Wakefield. All rights reserved. The information contained in this communication is strictly confidential. This information has been obtained from sources believed to be reliable but has not been verified. NO WARRANTY OR REPRESENTATION, EXPRESS OR IMPLIED, IS MADE AS TO THE CONDITION OF THE PROPERTY (OR PROPERTIES) REFERENCED HEREIN OR AS TO THE ACCURACY OR COMPLETENESS OF THE INFORMATION CONTAINED HEREIN, AND SAME IS SUBMITTED SUBJECT TO ERRORS, OMISSIONS, CHANGE OF PRICE, RENTAL OR OTHER CONDITIONS, WITHDRAWAL WITHOUT NOTICE, AND TO ANY SPECIAL LISTING CONDITIONS IMPOSED BY THE PROPERTY OWNER(S). ANY PROJECTIONS, OPINIONS OR ESTIMATES ARE SUBJECT TO UNCERTAINTY AND DO NOT SIGNIFY CURRENT OR FUTURE PROPERTY PERFORMANCE.

View Site Specific  
**COVID-19**  
PREVENTION PLAN