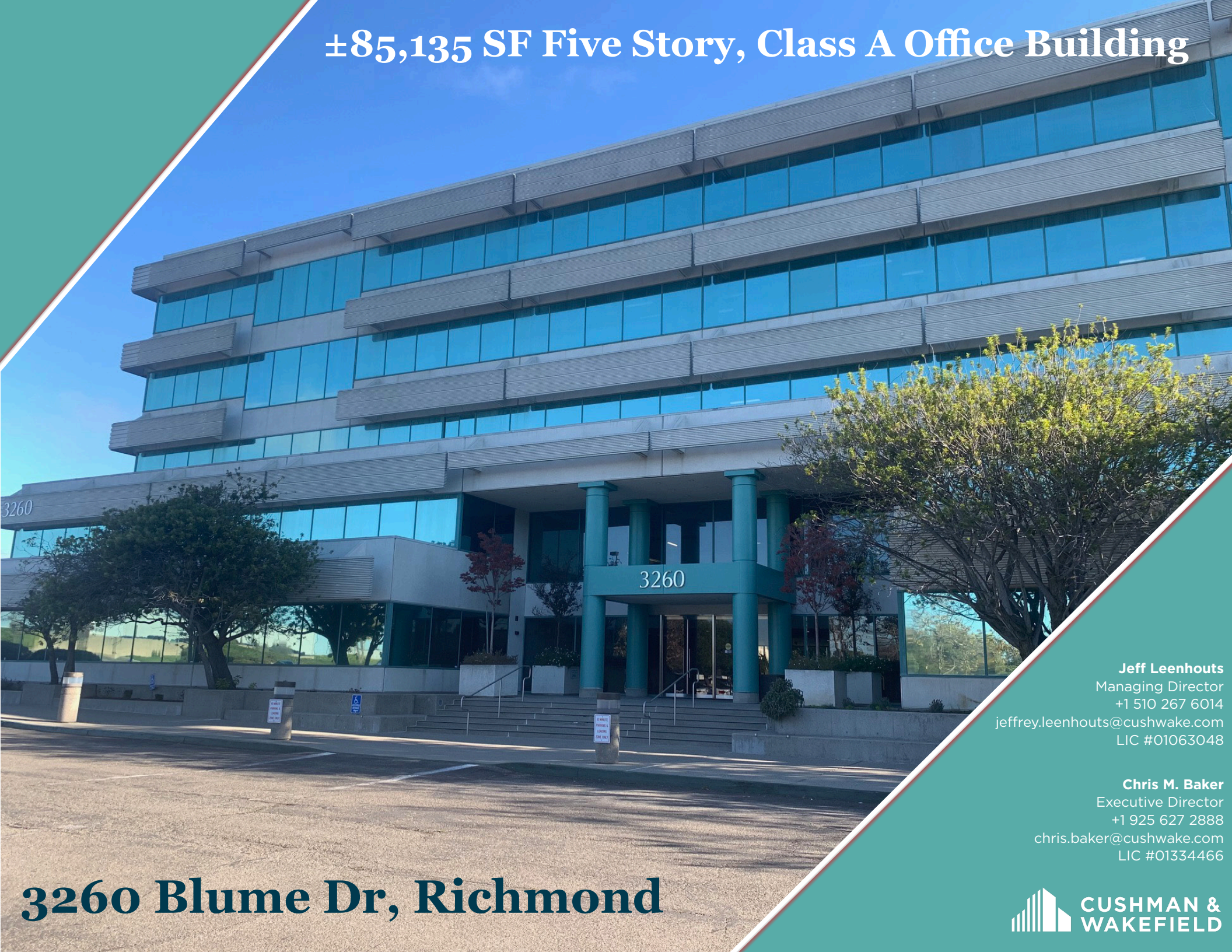


±85,135 SF Five Story, Class A Office Building



**Jeff Leenhouts**  
Managing Director  
+1 510 267 6014  
jeffrey.leenhouts@cushwake.com  
LIC #01063048

**Chris M. Baker**  
Executive Director  
+1 925 627 2888  
chris.baker@cushwake.com  
LIC #01334466

**3260 Blume Dr, Richmond**









# AMENITIES MAP



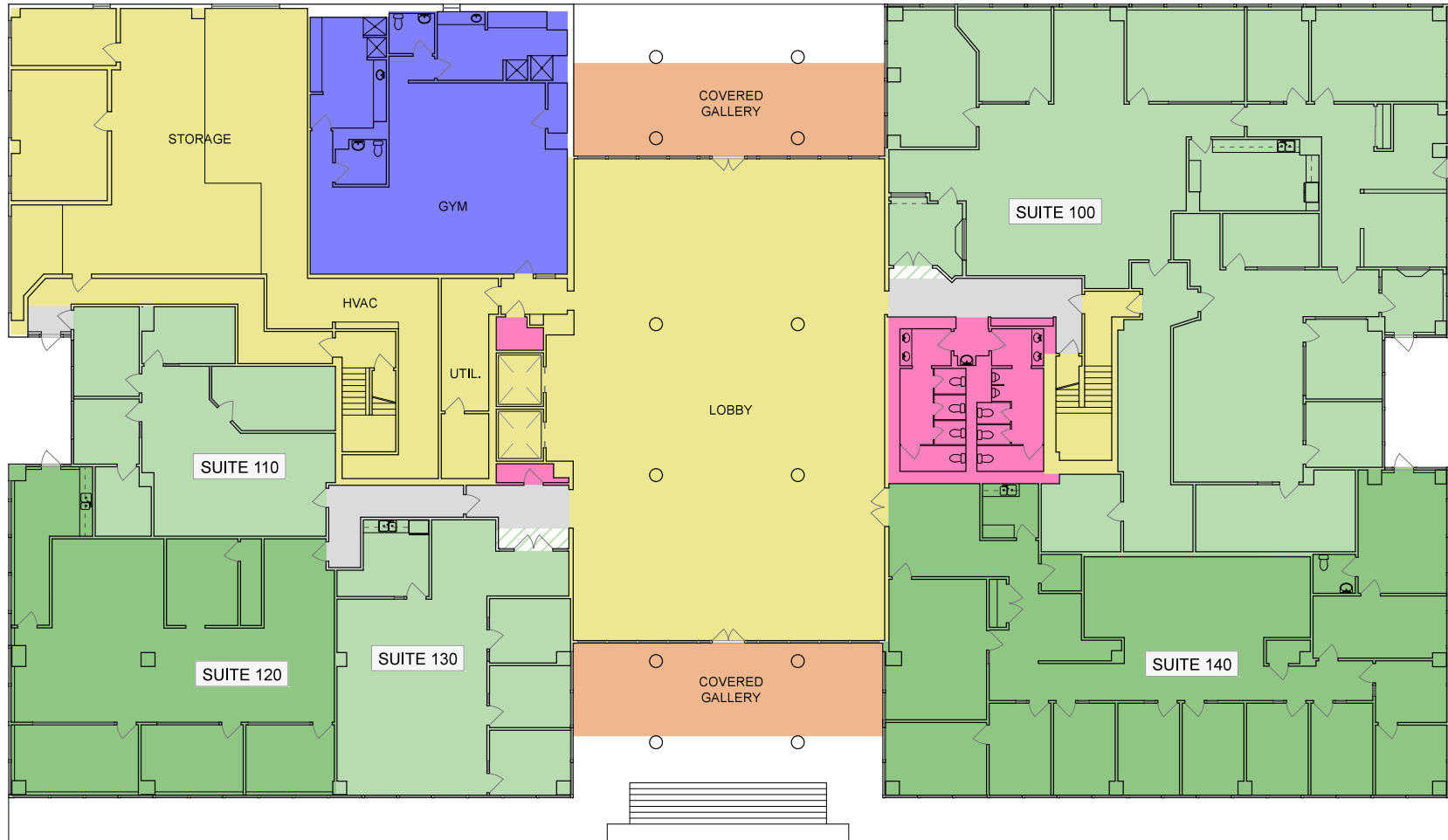


# 3260 BLUME DRIVE

RICHMOND, CA 94806



KEY	
	Tenant Area
	Tenant Ancillary Area
	Major Vertical Penetrations
	Unenclosed Building Feature
	Base Building Circulation
	Building Service Area
	Building Amenity Area
	Floor Service Area

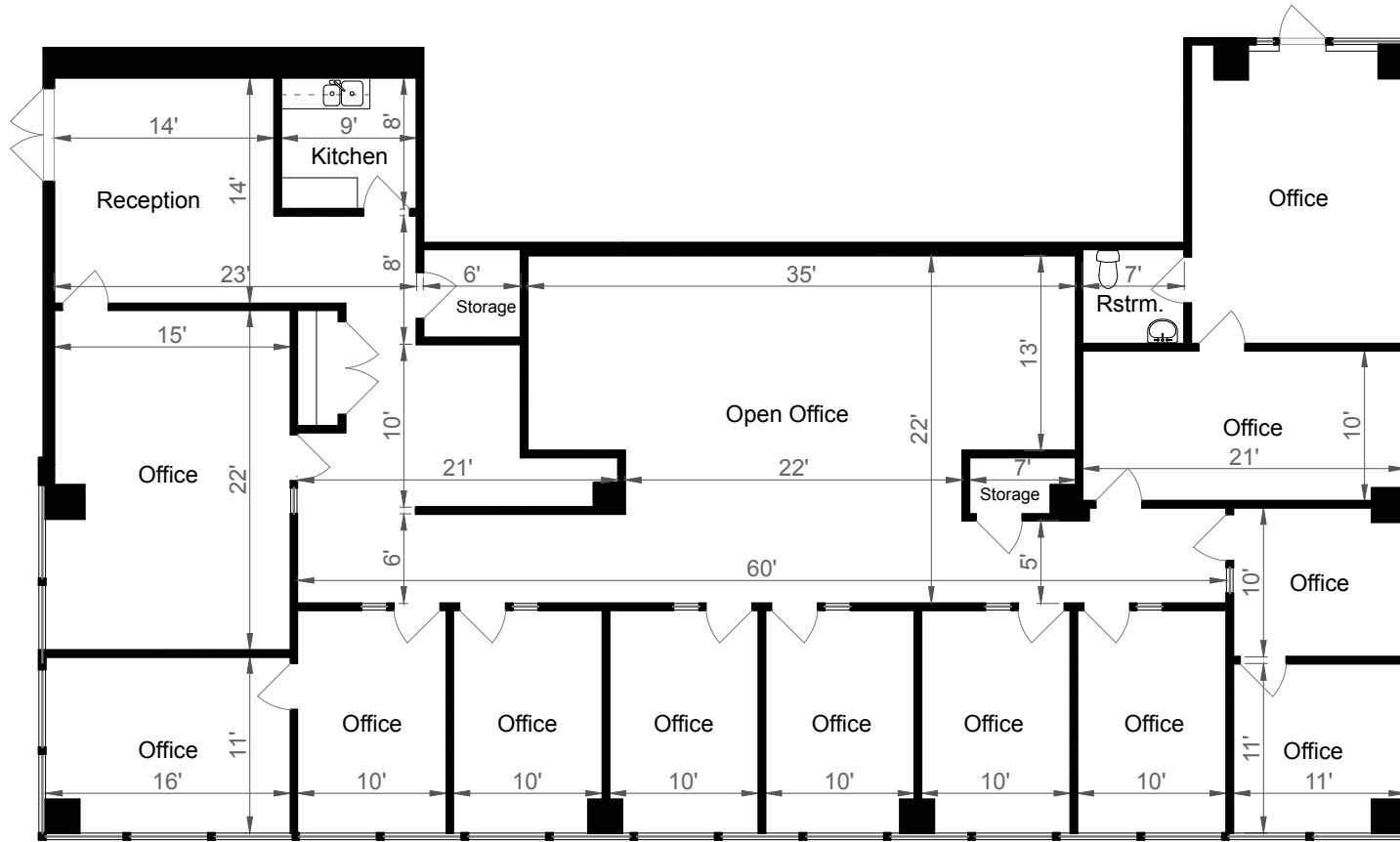







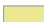


FIRST FLOOR

Rendering by Floor Plan Visuals.  
All measurements are approximate. While deemed reliable, no information on these floor plans should be relied upon without independent verification.

# SUITE 140:

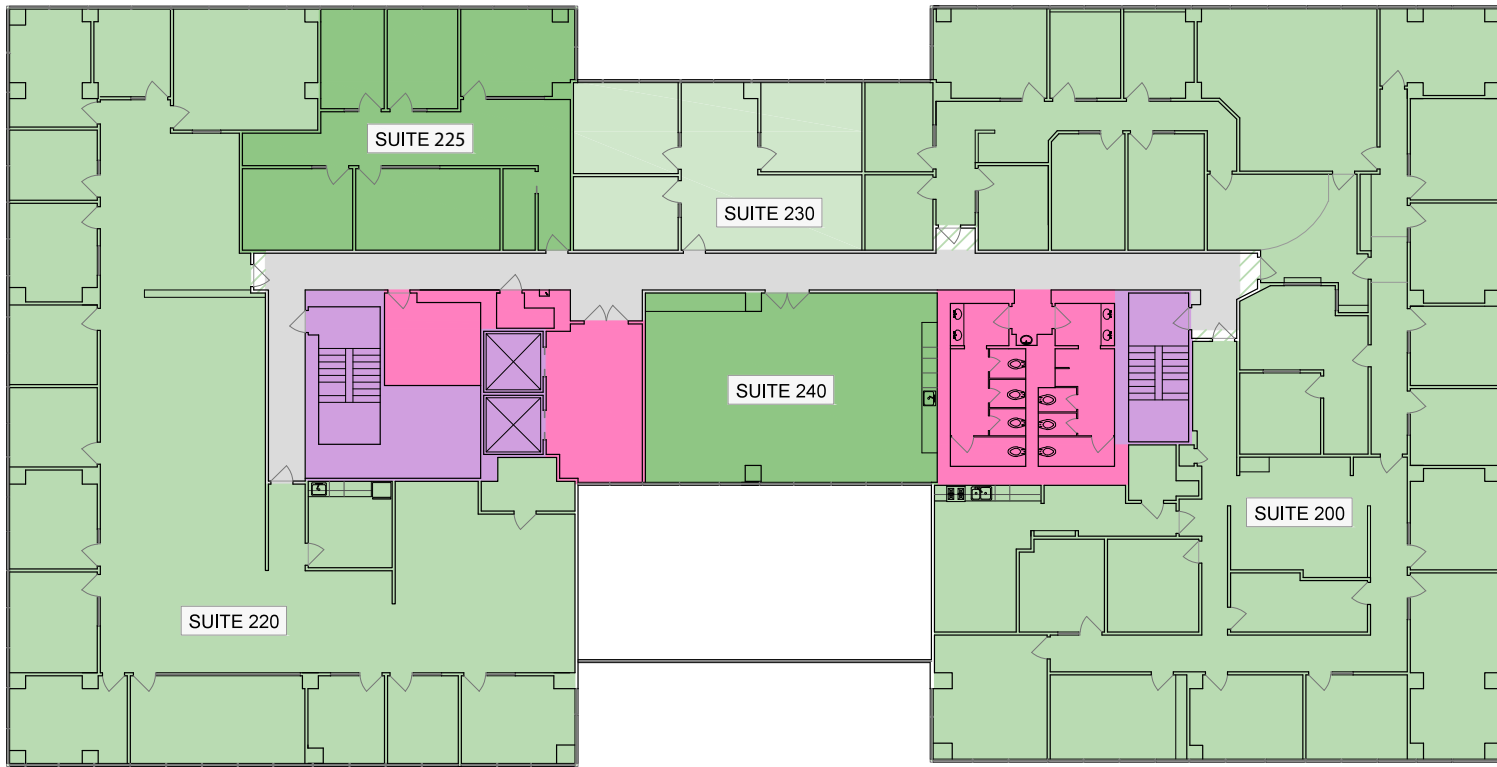
→ ± 4,765 RSF



KEY	
	Tenant Area
	Tenant Ancillary Area
	Major Vertical Penetrations
	Unenclosed Building Feature
	Base Building Circulation
	Building Service Area
	Building Amenity Area
	Floor Service Area

# 3260 BLUME DRIVE

RICHMOND, CA 94806



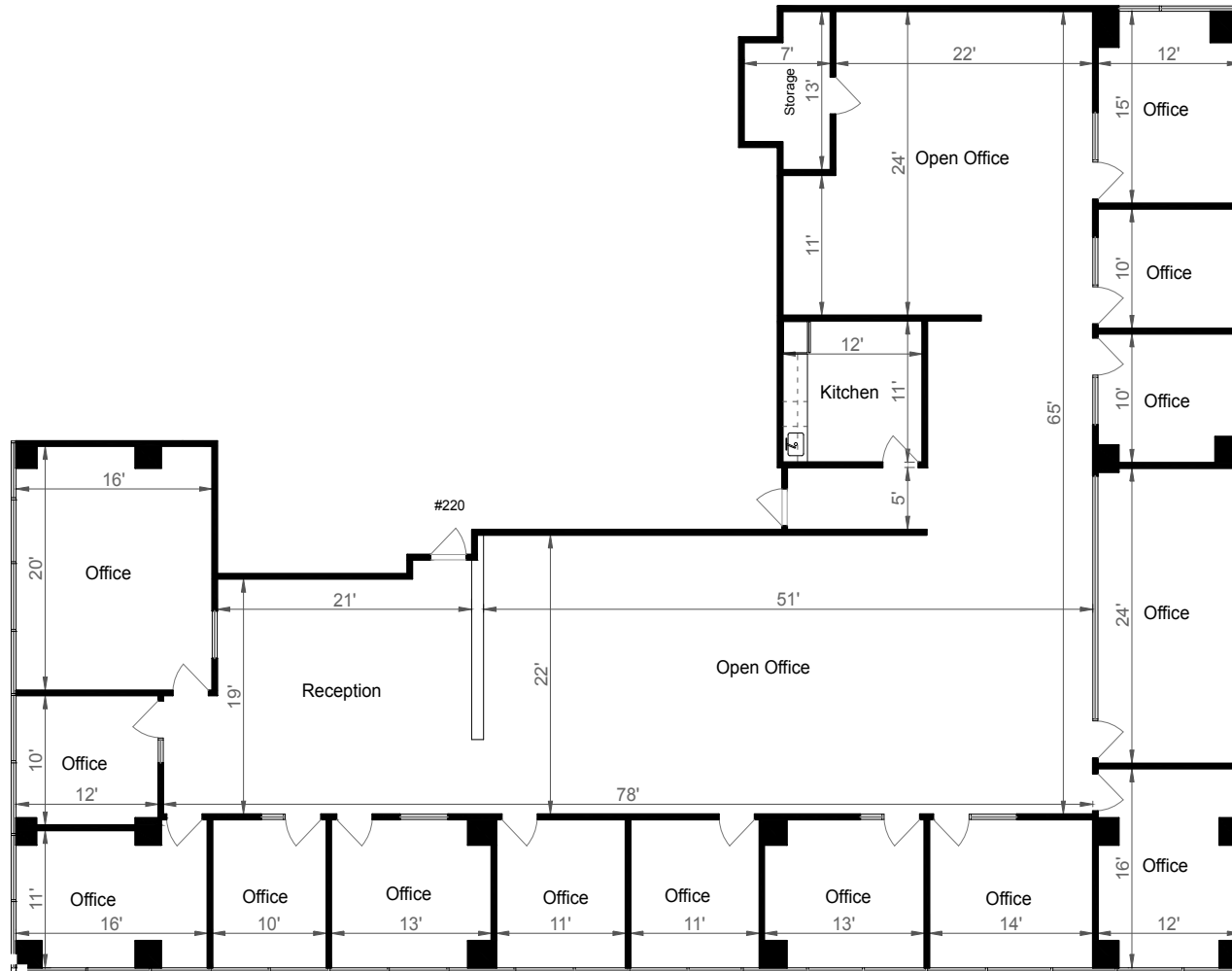
SECOND FLOOR

Rendering by Floor Plan Visuals.  
 All measurements are approximate. While deemed reliable, no information on these floor plans should be relied upon without independent verification.






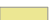


# SUITE 200: → ± 8,863 RSF



# SUITE 220: → ± 6,785 RSF

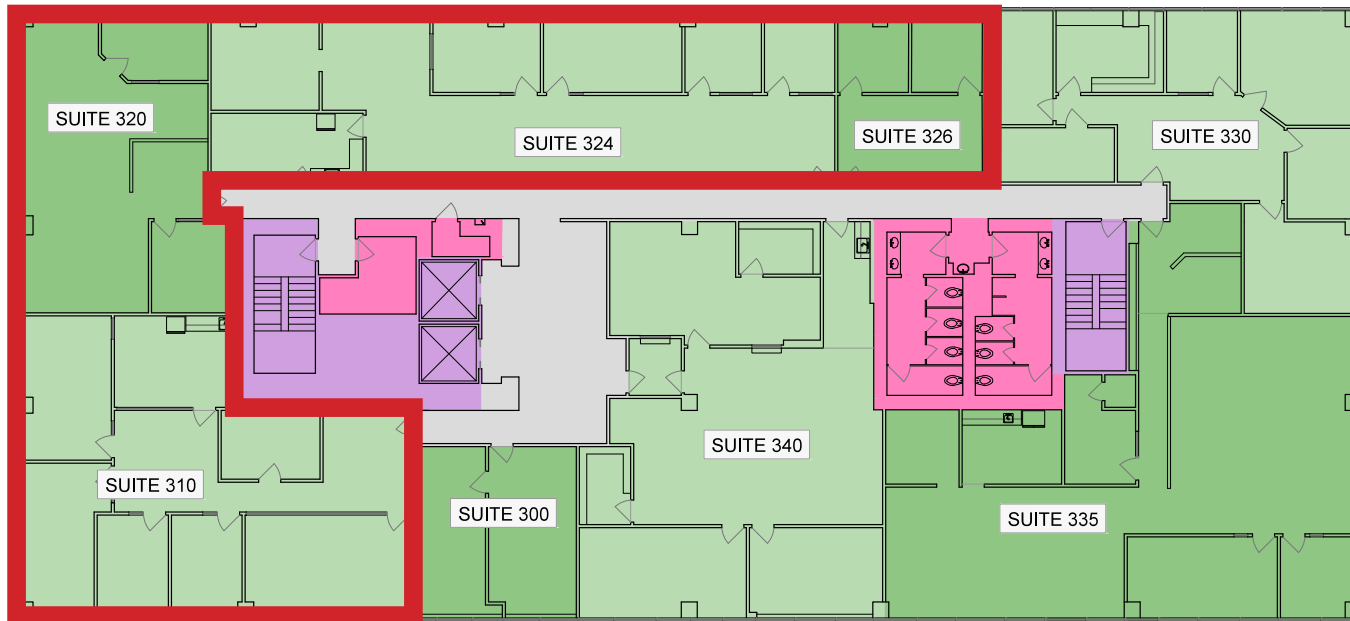




KEY	
	Tenant Area
	Tenant Ancillary Area
	Major Vertical Penetrations
	Unenclosed Building Feature
	Base Building Circulation
	Building Service Area
	Building Amenity Area
	Floor Service Area

# 3260 BLUME DRIVE

RICHMOND, CA 94806



*\* Suites 310, 320, 324 and 326 can be combined for 7,042 RSF*

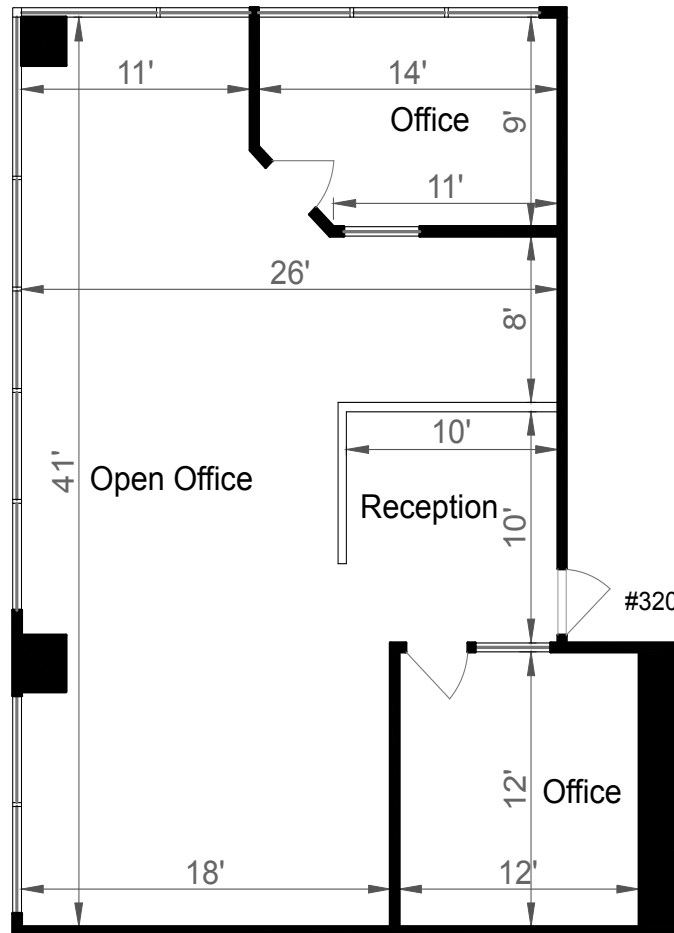
THIRD FLOOR

# SUITE 310:

→ ± 2,452 RSF

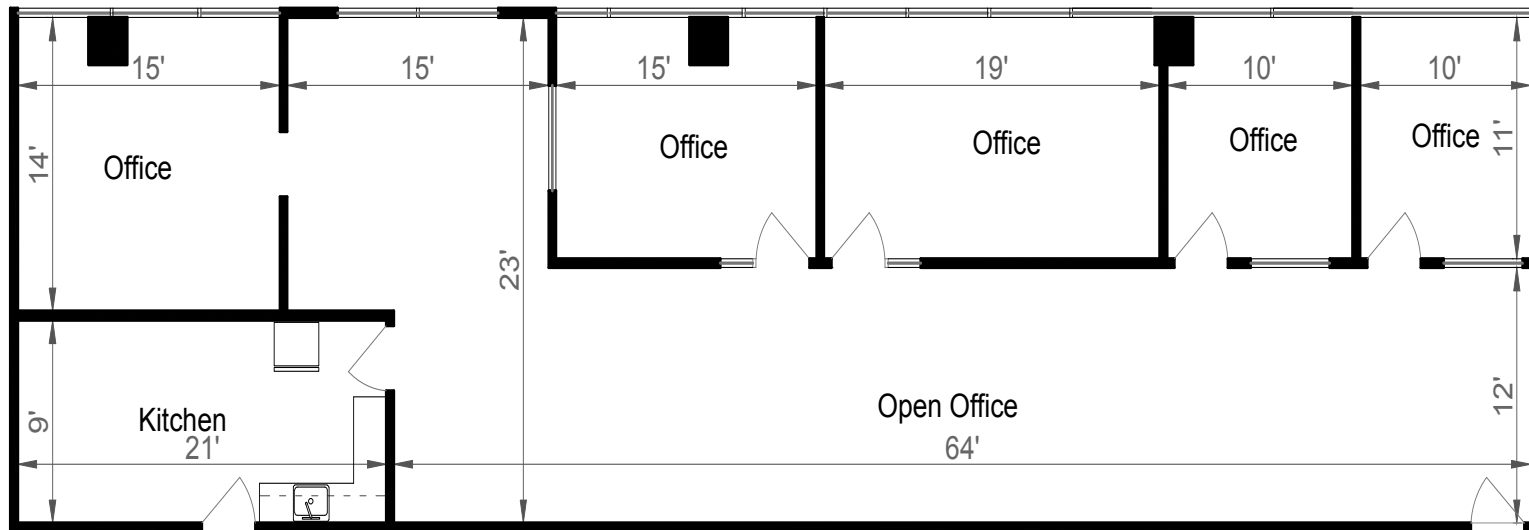


# SUITE 320: → ± 1,448 RSF





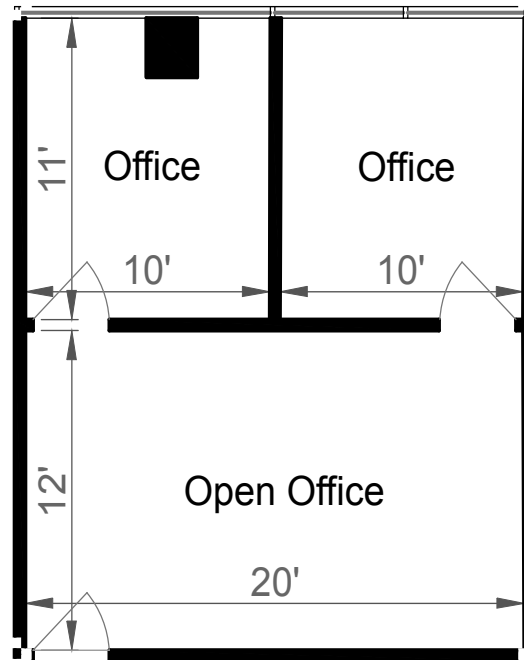
# SUITE 324: → ± 2,544 RSF



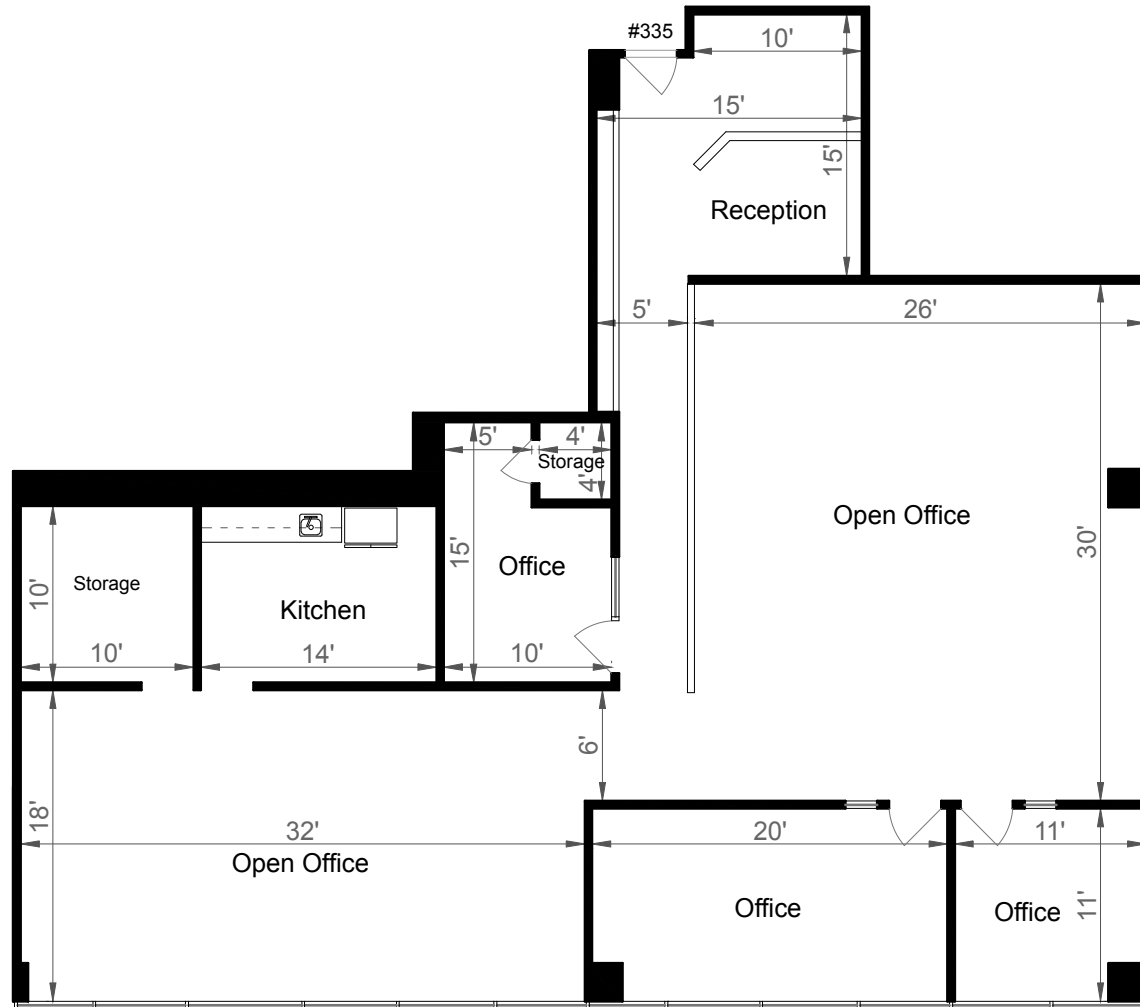
#324

# SUITE 326:






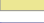


→ ± 598 RSF



# SUITE 335: → ± 3,211 RSF

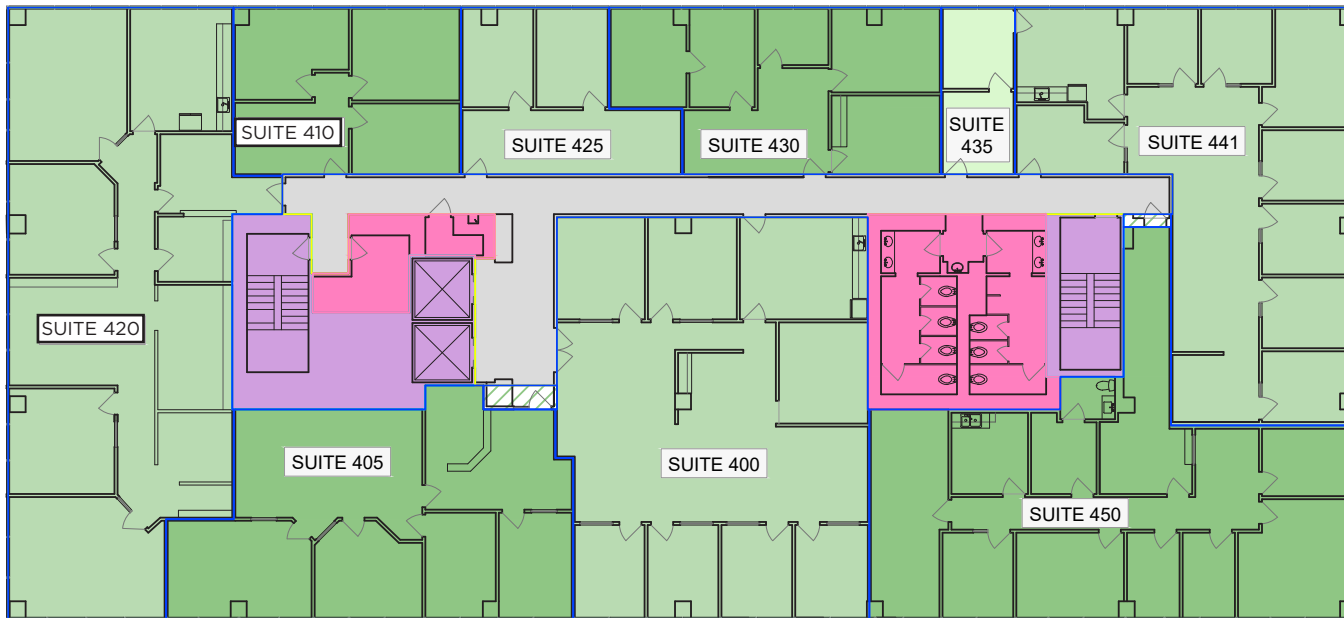




KEY	
	Tenant Area
	Tenant Ancillary Area
	Major Vertical Penetrations
	Unenclosed Building Feature
	Base Building Circulation
	Building Service Area
	Building Amenity Area
	Floor Service Area

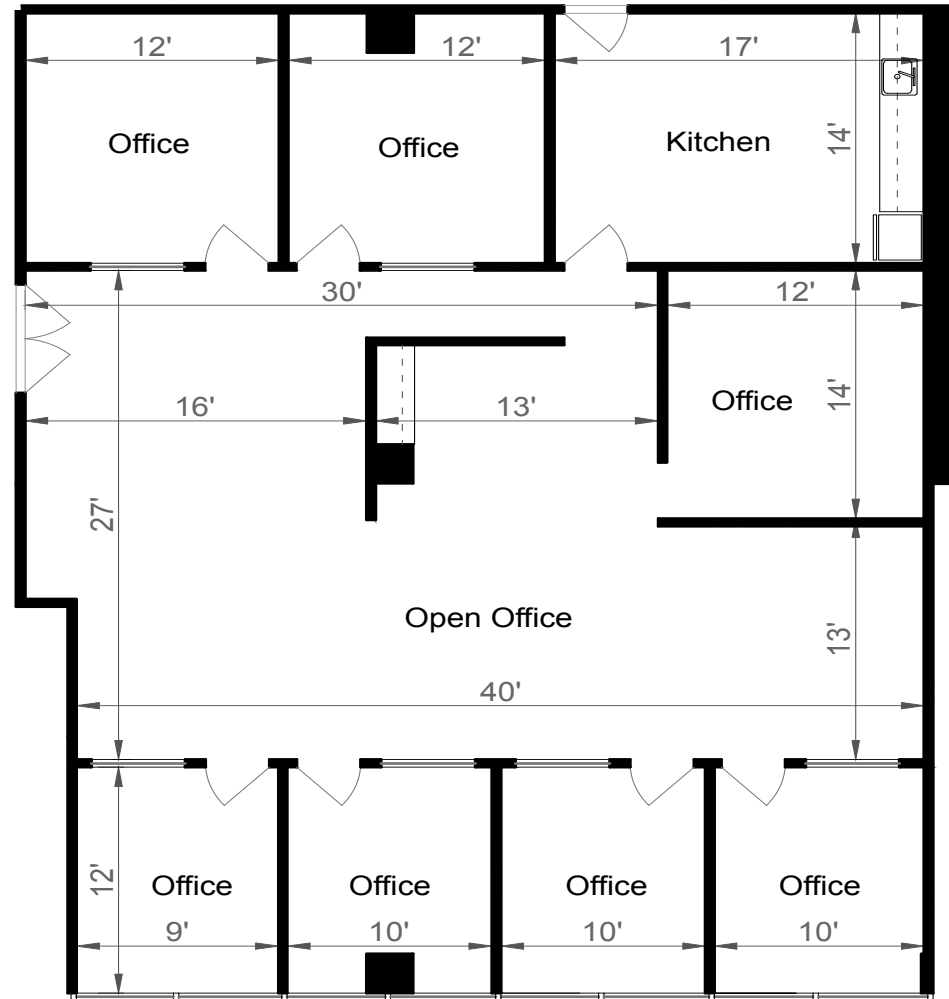
# 3260 BLUME DRIVE

RICHMOND, CA 94806

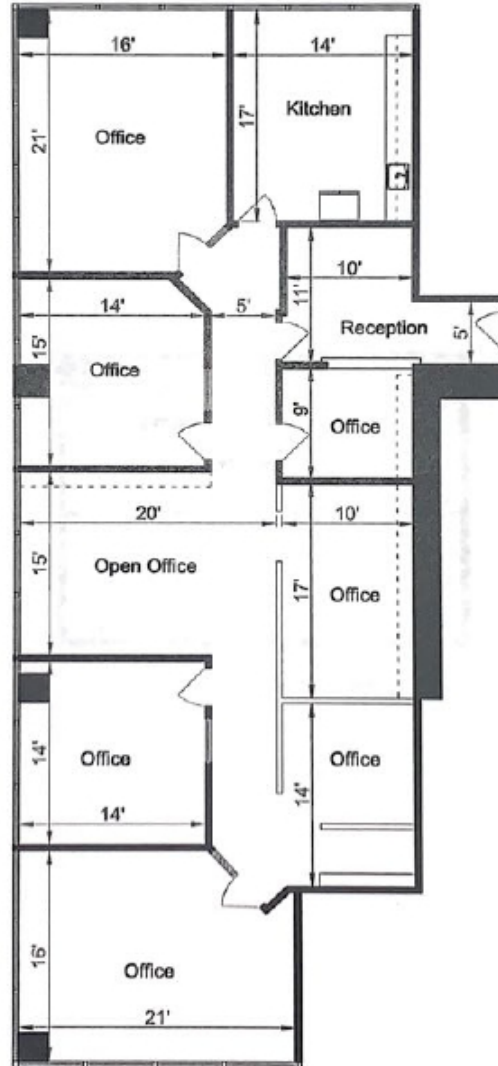


FOURTH FLOOR

# SUITE 400: → ± 2,869 RSF

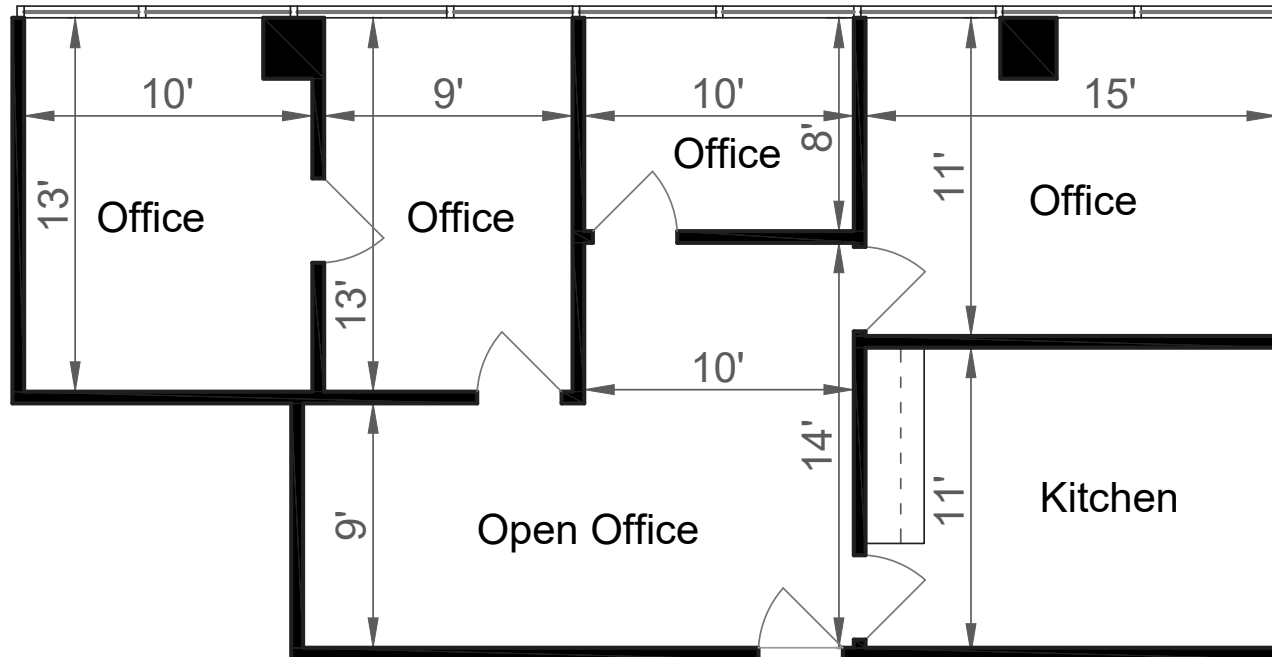


# SUITE 420: → ± 3,107 RSF

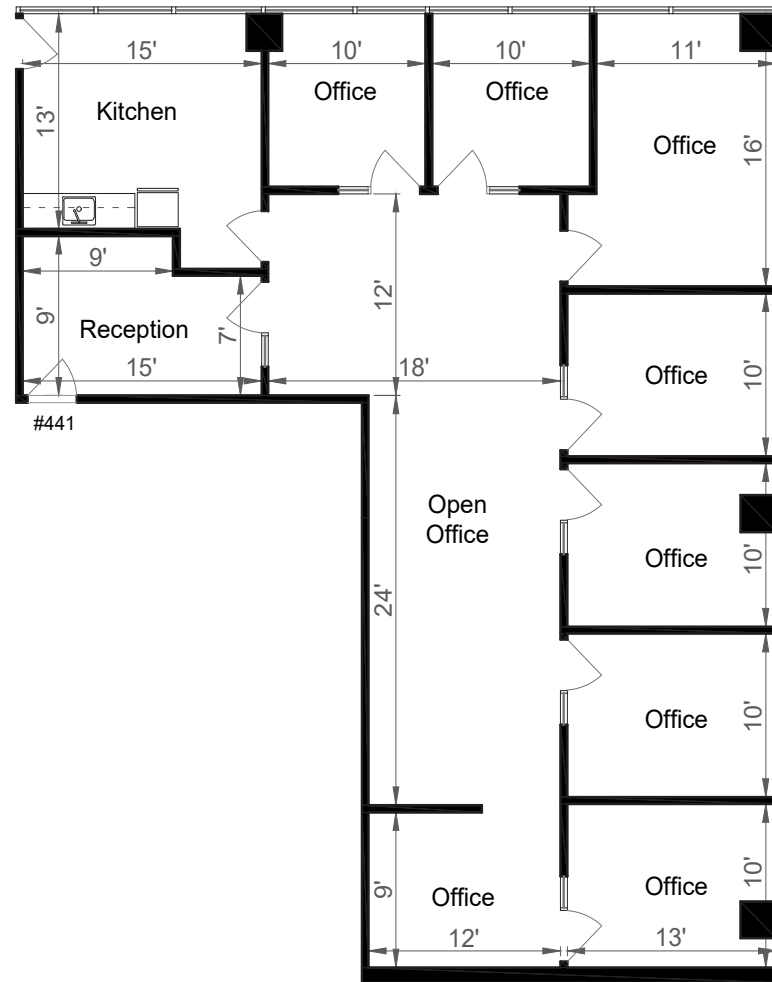






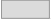
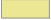




# SUITE 430: → ± 1,183 RSF



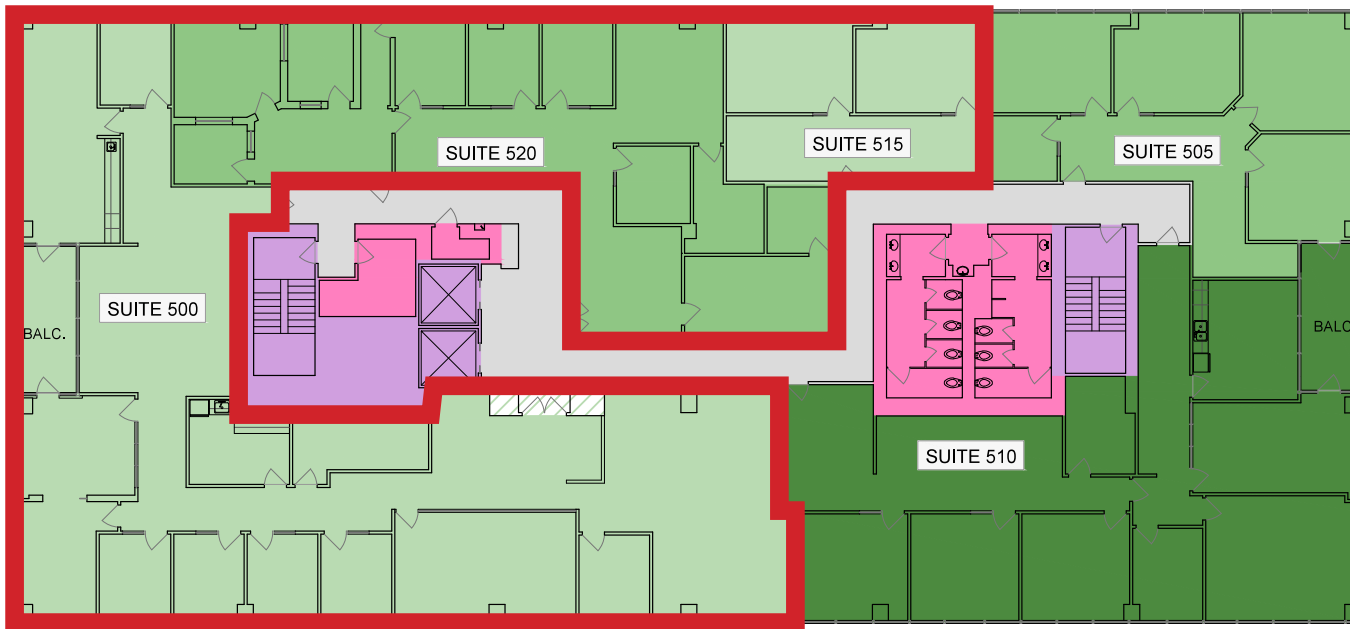
# SUITE 441: → ± 2,433 RSF



KEY	
	Tenant Area
	Tenant Ancillary Area
	Major Vertical Penetrations
	Unenclosed Building Feature
	Base Building Circulation
	Building Service Area
	Building Amenity Area
	Floor Service Area

# 3260 BLUME DRIVE

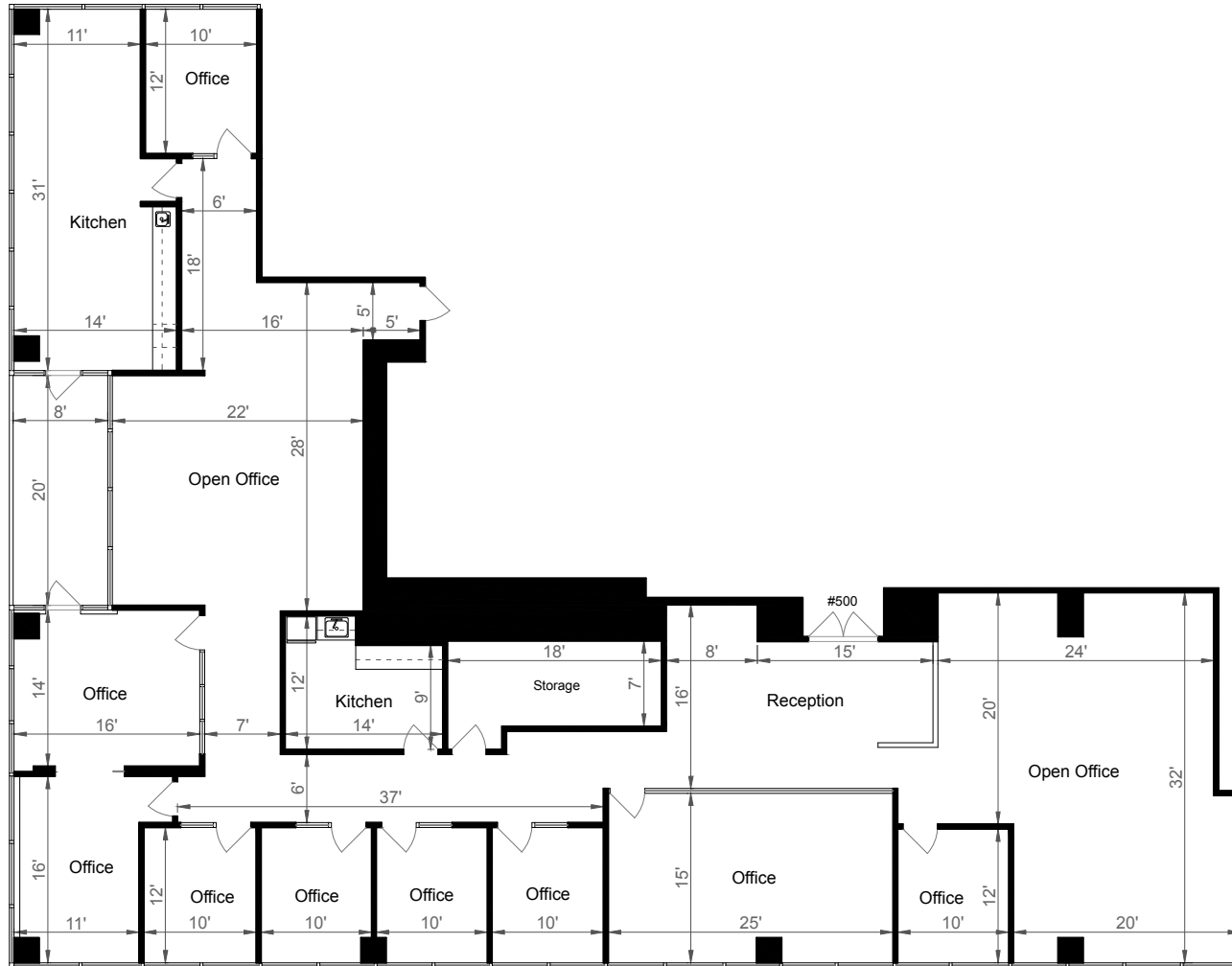
RICHMOND, CA 94806



*\* Suites 510, 515 and 520 can be combined for 10,097 RSF*

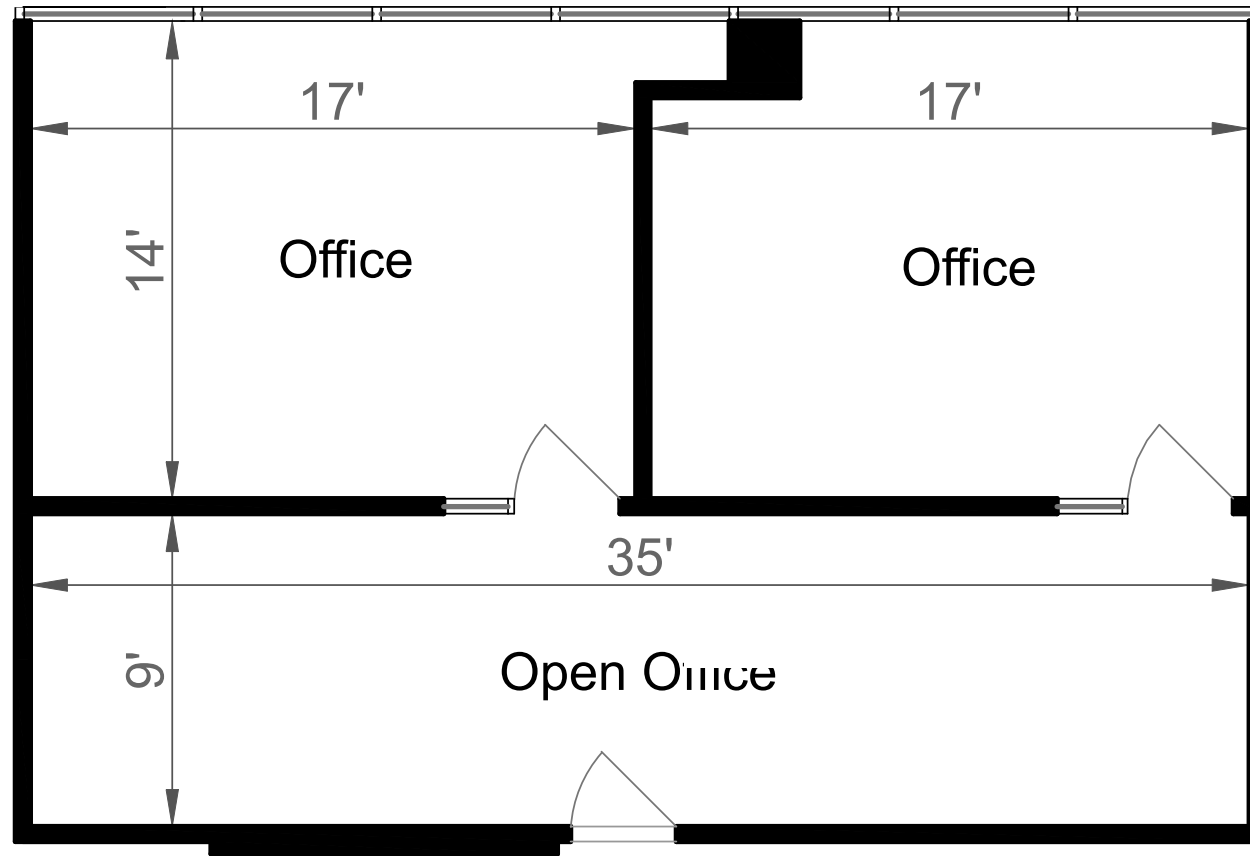
FIFTH FLOOR

# SUITE 500: → ± 5,858 RSF



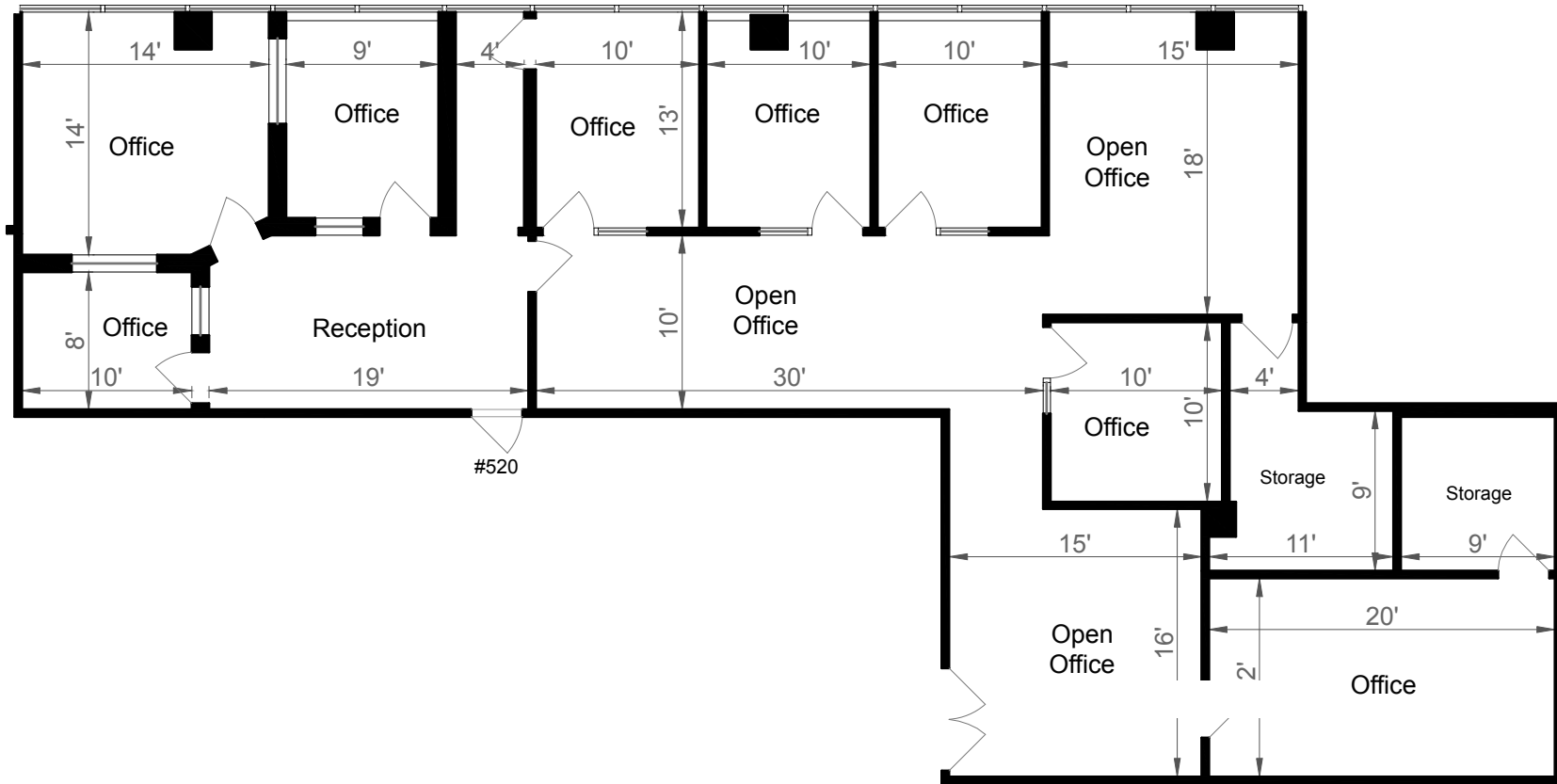
# SUITE 515:

→ ± 1,033 RSF





# SUITE 520: → ± 3,206 RSF





3260

3260

**Jeff Leenhouts**  
Managing Director  
+1 510 267 6014  
jeffrey.leenhouts@cushwake.com  
LIC #01063048

**Chris M. Baker**  
Executive Director  
+1 925 627 2888  
chris.baker@cushwake.com  
LIC #01334466

**3260 Blume Dr, Richmond**

