

LATHAM
S Q U A R E

FOR LEASE



**CUSHMAN &
WAKEFIELD**



Built to Inspire
1611 Telegraph Ave, Oakland, CA 94612

Property Highlights



Seismically
Retrofitted Building



Onsite Property
Management



Tenant
Conference Center



Full Elevator Modernization
Completed by in 2020



Available Parking
in Building



Secure Bike Storage,
ADA Showers and Lockers



24/7 Security



Efficient Floor Plates



Newly Renovated Lobby

Designed for collaboration, Latham Square offers flexible office space to creative businesses. With charming, time-honored spaces equipped to meet the needs of modern workplaces, Latham Square has open floor plans with exposed brick, concrete, and operable windows. The amenity spaces include a conference center, bike storage, showers, and lockers. Its location in the heart of downtown Oakland is convenient to many types of transportation, high-end dining, and recreation.









Availabilities

837 SF - 8,237 SF

Lease Term: Negotiable

Suite	Sqaure Feet	Lease Type	Description
210	837 SF	IG	Small, three room suite with exposed brick and concrete exterior walls and a kitchenette.
500	8,237 SF	IG	Fully built-out creative full floor with exposed brick walls and concrete ceilings. 9 private offices, large conference room, newly-built modern kitchen & break area, and private restrooms.
700	8,237 SF	IG	Open plan with exposed concrete ceilings, brick walls and operable windows. A total of 6 meeting rooms, kitchen, and open area with ±50 benching workstations.
950	3,333 SF	IG	New spec suite planned with one private office, one large conference room and open space.
1000	8,237 SF	IG	Open plan with exposed concrete ceilings, brick walls and operable windows. A total of 6 meeting rooms, kitchen, and open area with ±50 benching workstations.







Suite 210

837 SF

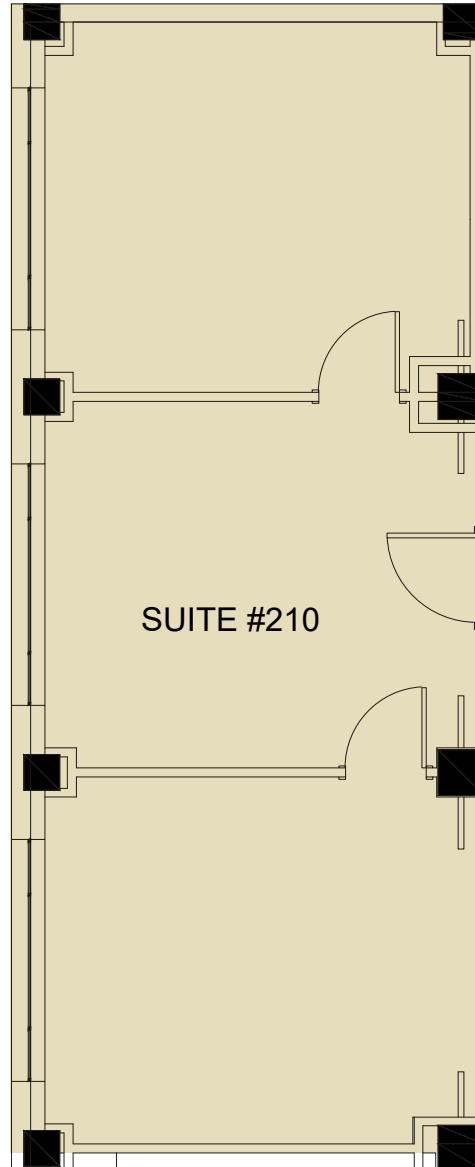


JOHN DOLBY

Executive Director
+1 510 267 6027
john.dolby@cushwake.com
LIC #00870630

RYAN DALTON

Director
+1 510 891 5810
ryan.dalton@cushwake.com
LIC #01809447





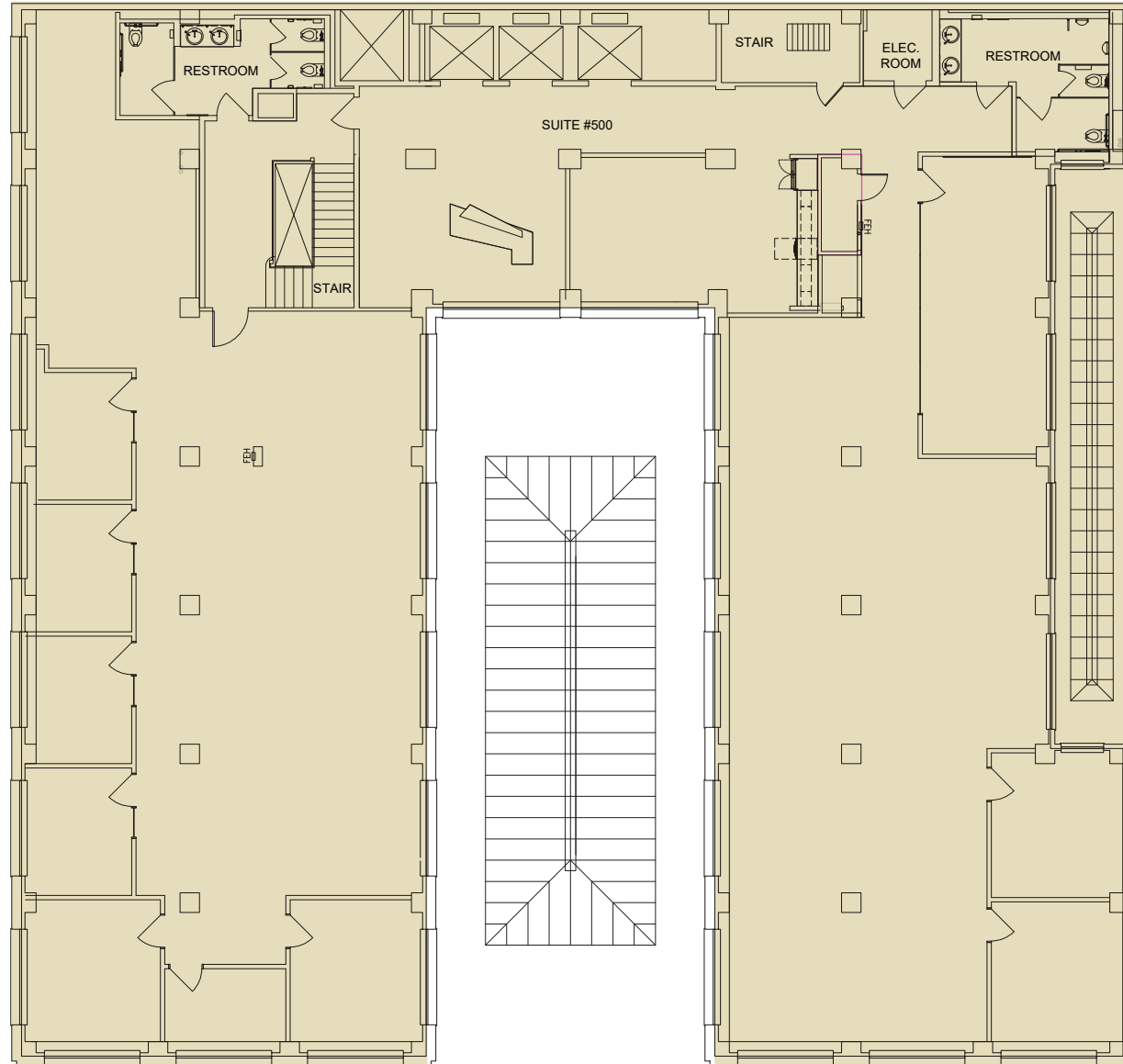
Suite 500

8,237 SF



JOHN DOLBY
Executive Director
+1 510 267 6027
john.dolby@cushwake.com
LIC #00870630

RYAN DALTON
Director
+1 510 891 5810
ryan.dalton@cushwake.com
LIC #01809447





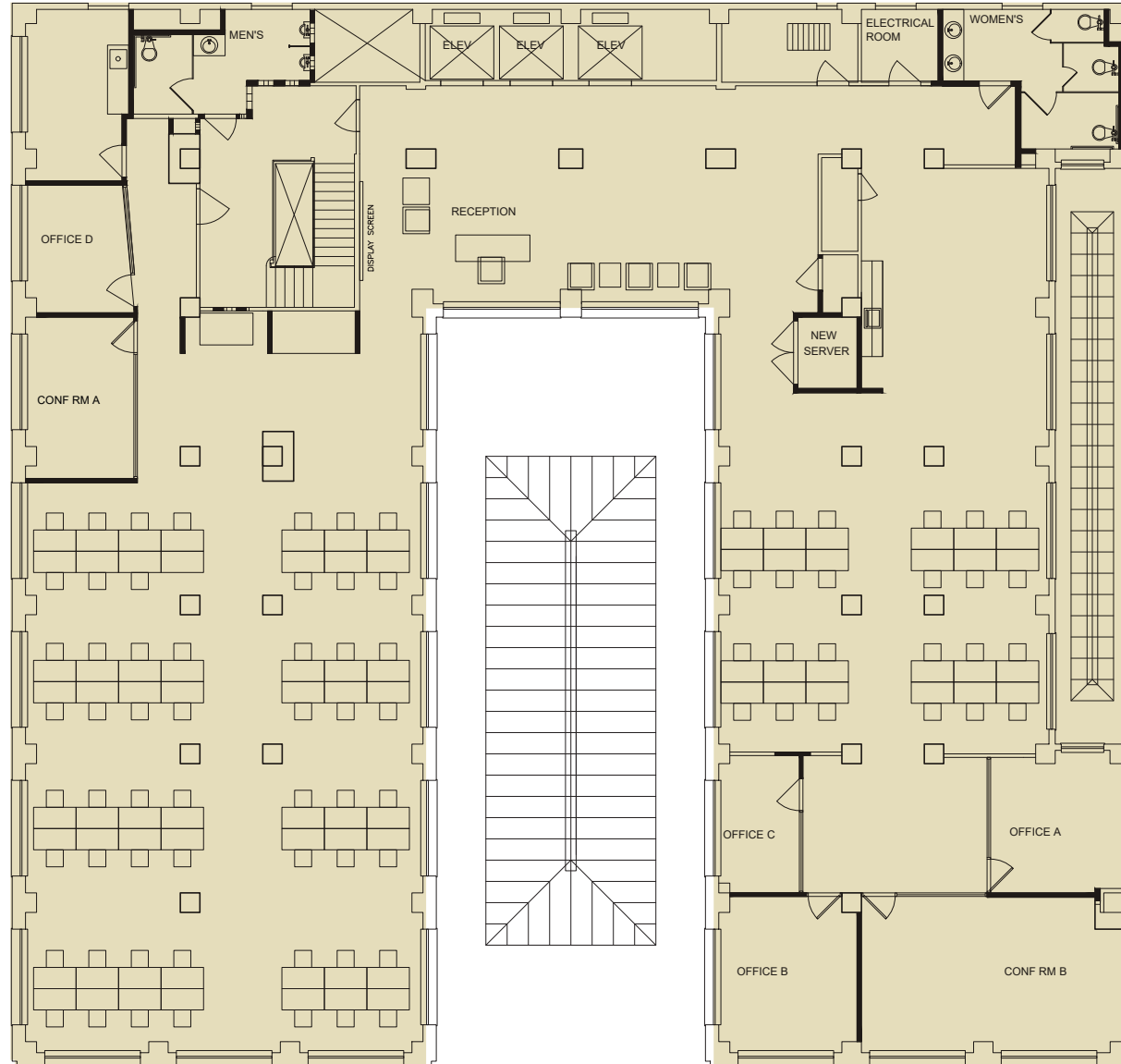
Suite 700

8,237 SF



JOHN DOLBY
Executive Director
+1 510 267 6027
john.dolby@cushwake.com
LIC #00870630

RYAN DALTON
Director
+1 510 891 5810
ryan.dalton@cushwake.com
LIC #01809447





Suite 950

3,333 SF

JOHN DOLBY

Executive Director

+1 510 267 6027

john.dolby@cushwake.com

LIC #00870630

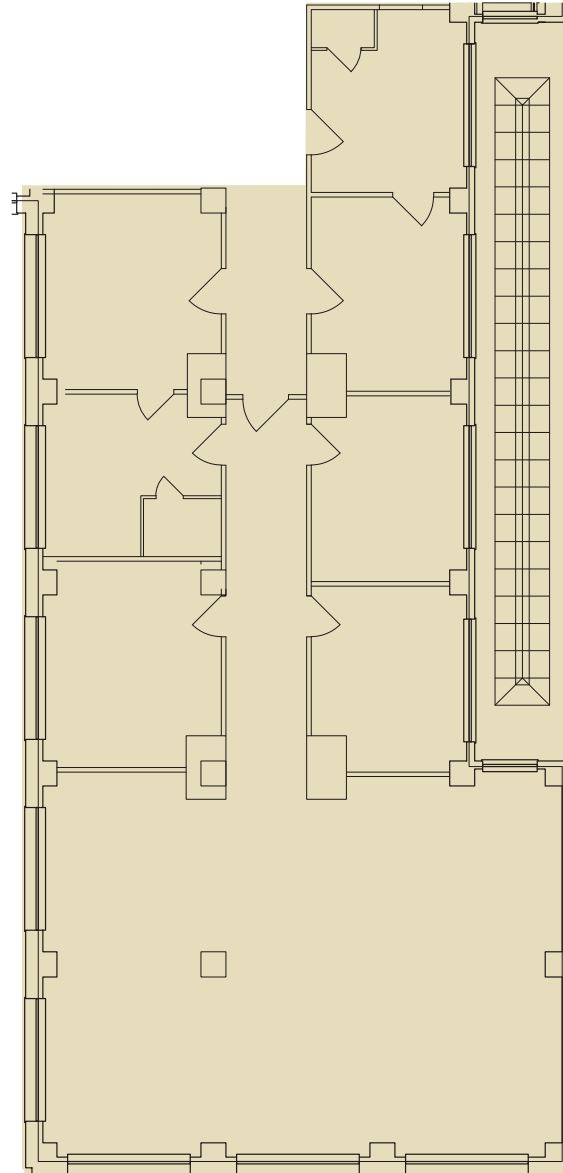
RYAN DALTON

Director

+1 510 891 5810

ryan.dalton@cushwake.com

LIC #01809447





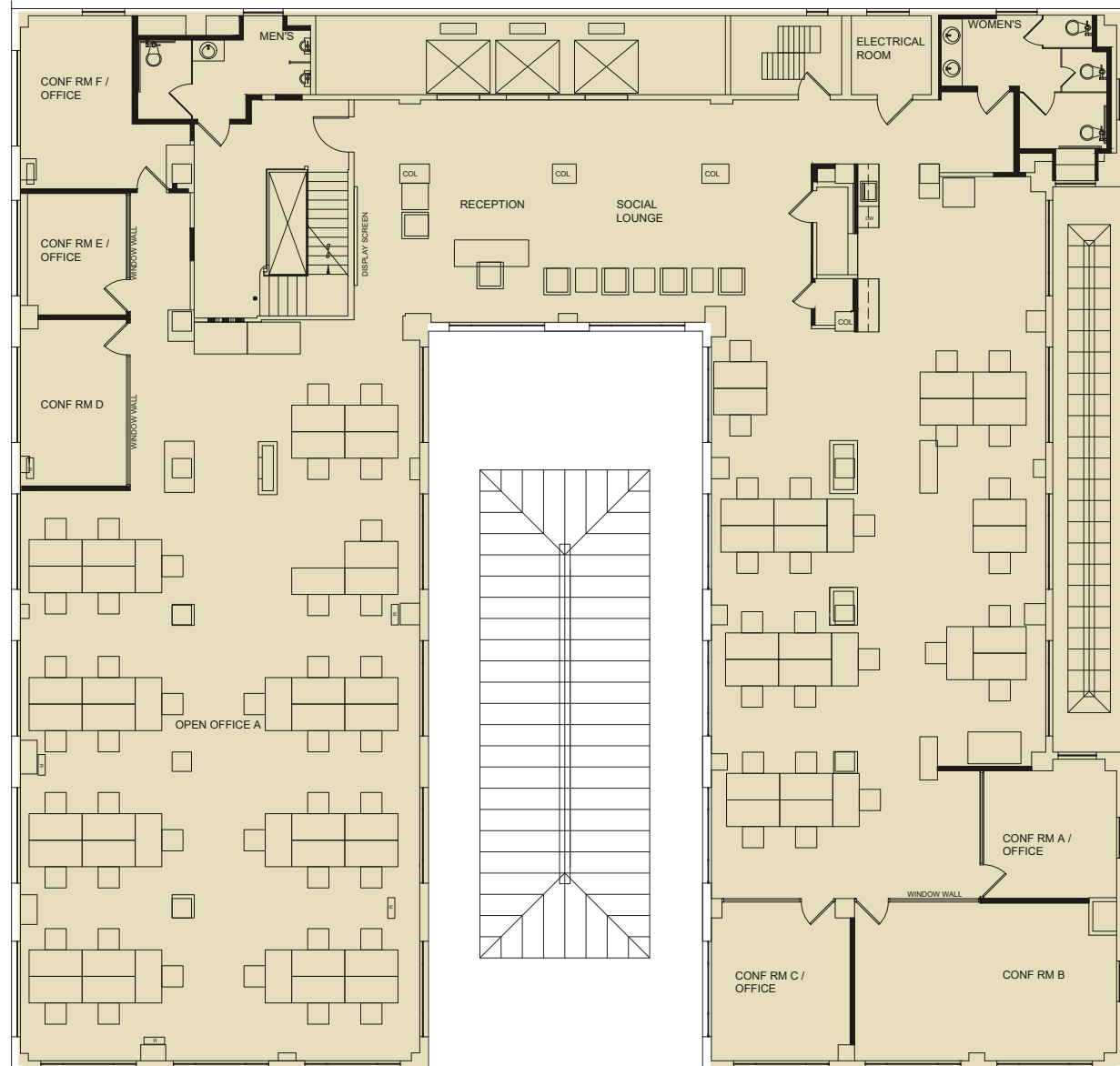
Suite 1000

8,237 SF



JOHN DOLBY
Executive Director
+1 510 267 6027
john.dolby@cushwake.com
LIC #00870630

RYAN DALTON
Director
+1 510 891 5810
ryan.dalton@cushwake.com
LIC #01809447







LATHAM
S Q U A R E

FOR LEASE

For more information, please contact:

JOHN DOLBY

Executive Director

+1 510 267 6027

john.dolby@cushwake.com

LIC #00870630

RYAN DALTON

Director

+1 510 891 5810

ryan.dalton@cushwake.com

LIC #01809447

Built to Inspire

1611 Telegraph Ave, Oakland, CA 94612

©2021 Cushman & Wakefield. NO WARRANTY OR REPRESENTATION, EXPRESS OR IMPLIED, IS MADE TO THE ACCURACY OR COMPLETENESS OF THE INFORMATION CONTAINED HEREIN, AND SAME IS SUBMITTED SUBJECT TO ERRORS, OMISSIONS, CHANGE OF PRICE, RENTAL OR OTHER CONDITIONS, WITHDRAWAL WITHOUT NOTICE, AND TO ANY SPECIAL LISTING CONDITIONS IMPOSED BY THE PROPERTY OWNER(S), AS APPLICABLE, WE MAKE NO REPRESENTATION AS TO THE CONDITION OF THE PROPERTY (OR PROPERTIES) IN QUESTION.

 **CUSHMAN &
WAKEFIELD**