

2109 O'TOOLE AVENUE

SAN JOSE, CALIFORNIA | ±1,600-±2,250 SF FOR LEASE



2109 M

For more information, please contact:

Steve Pace
P +1 408 482 7037
steve.pace@cushwake.com
LIC #00817396

Dan Hollingsworth
P +1 408 615 3431
dan.hollingsworth@cushwake.com
LIC #01117716

Tiana Dampier
P +1 408 436 3680
tiana.dampier@cushwake.com
LIC #02191012

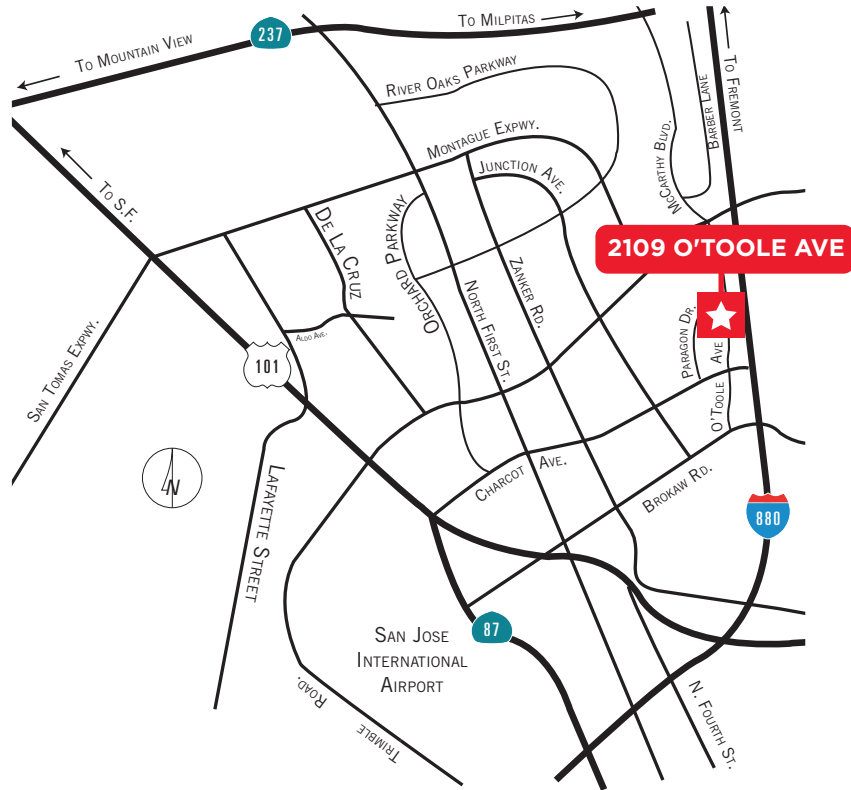


2109 O'TOOLE AVENUE

San Jose, California

Highlights

- High Image Business Park
- Flexible Floor Plans
- Signage Available
- Direct Access to Highway 880

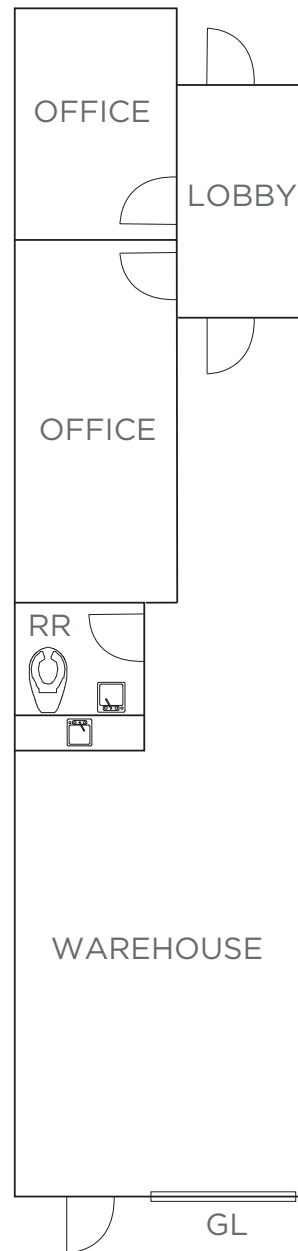


Floor Plan

SUITE R

±1,600 SF

- 100% HVAC
- Grade level door
- Warehouse & office space
- 100A @ 120/208V

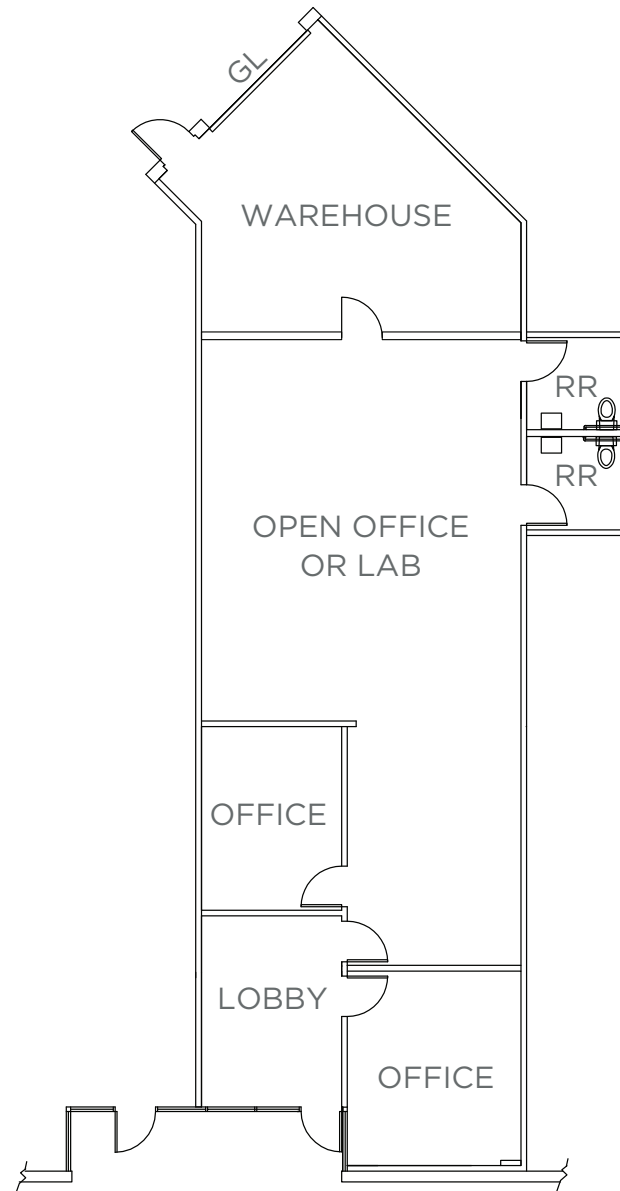


Floor Plan

SUITE J

±2,017 SF

- 100% HVAC
- Grade level door
- Warehouse & office space
- 100A @ 120/208V

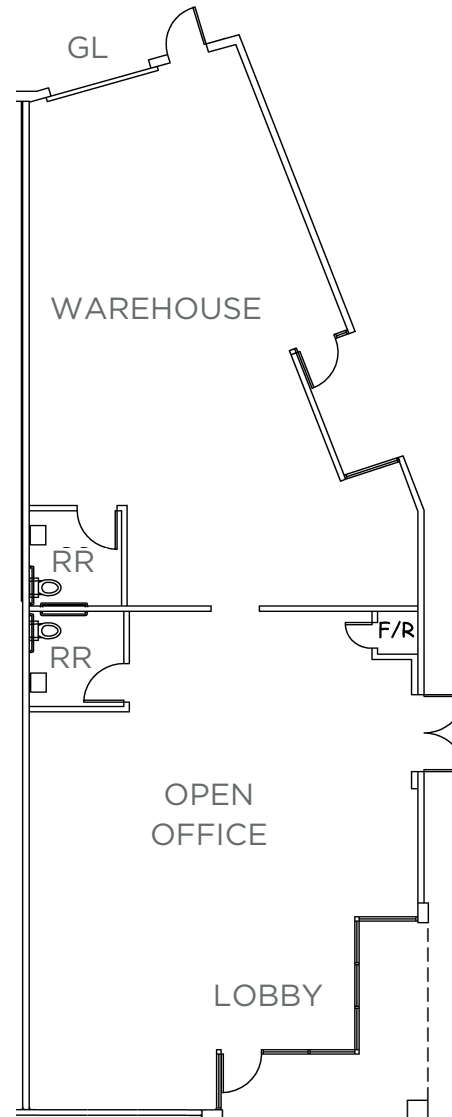


Floor Plan

SUITE S

±2,250 SF

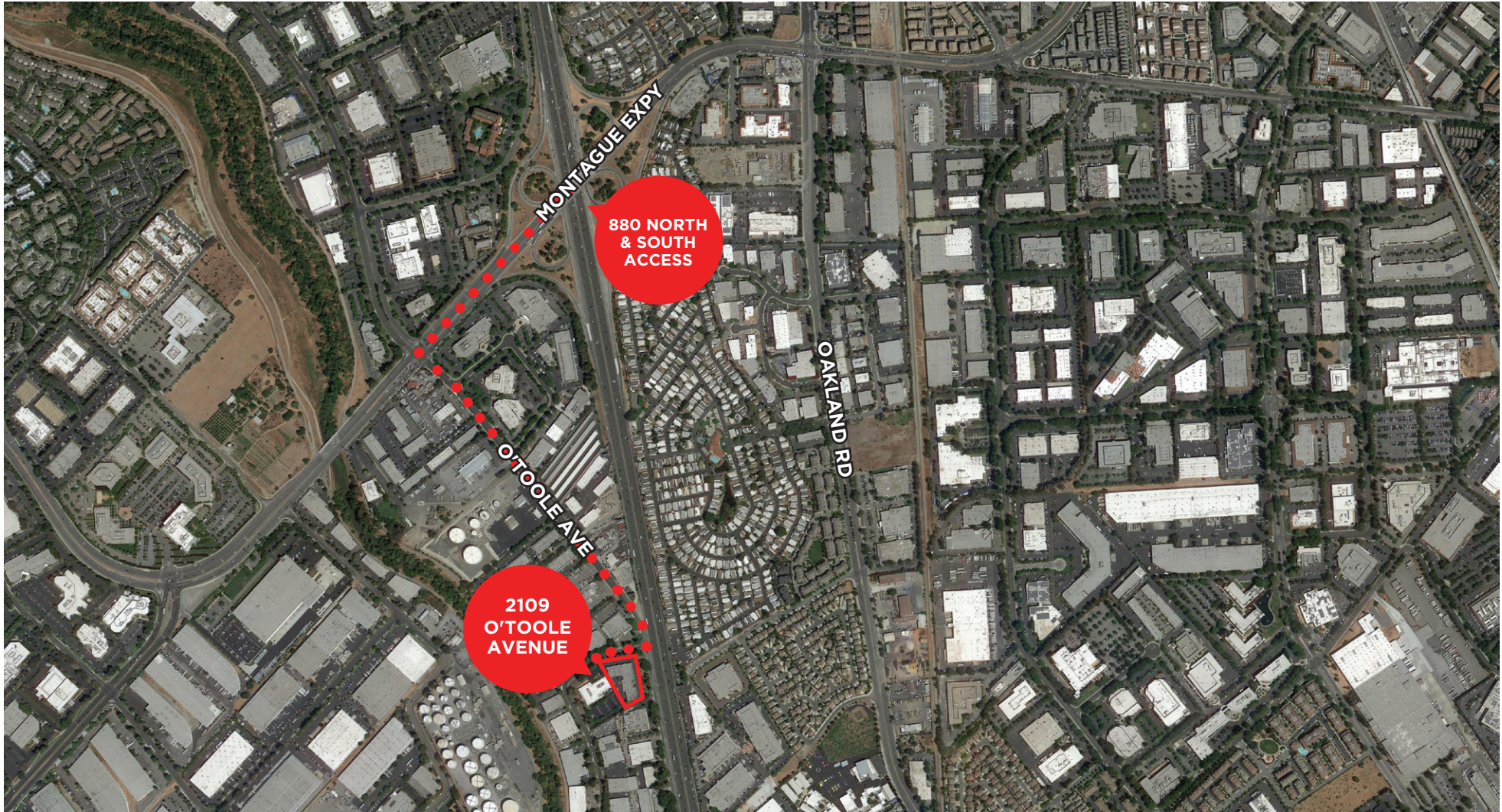
- **Flex space (Office/
Warehouse/Manufacturing)**
- **Grade level door**
- **100% HVAC**
- **100A @ 120/208V**



2109 O'TOOLE AVENUE

San Jose, California

880 Freeway Access



2109 O'TOOLE AVENUE

San Jose, California

Public Transit and Amenities

