

CAMPBELL

TECHNOLOGY PARK

±5,386 SF TO ±52,669 SF
OFFICE / R&D FOR LEASE

LIAM MARTIN
+1 408 436 3619
liam.martin@cushwake.com
LIC #02081625

STEVE PACE
+1 408 482 7037
steve.pace@cushwake.com
LIC #00817396

DAN HOLLINGSWORTH
+1 408 615 3431
dan.hollingsworth@cushwake.com
LIC #01117716



SITE PLAN



CAMPBELL

TECHNOLOGY PARK

PROJECT HIGHLIGHTS

±5,386 SF TO ±52,669 SF OFFICE / R&D FOR LEASE

- High Image Corporate Office/R&D Park
- Full Building Potentially Available
- Desirable West Valley location
- High-End Market Ready Interiors
- 3.8/1,000 Parking
- Grade and Dock Loading
- Adjacent to 4 Acre Community Park
- Par Course Jogging Trail Around Perimeter of Project
- Showers Available
- Call to Tour

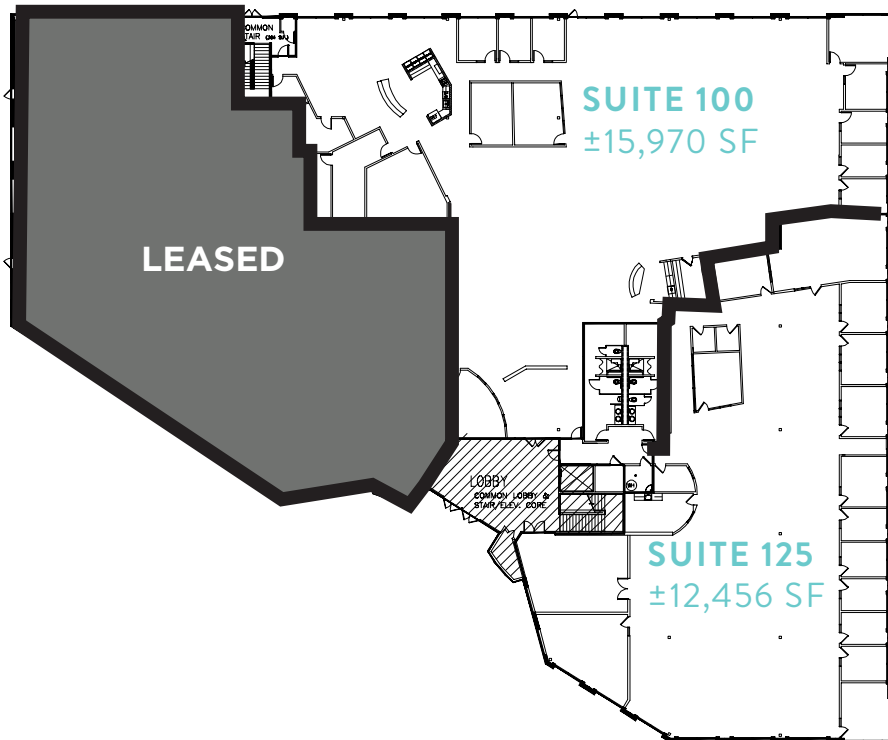
[VIEW SITE SPECIFIC COVID-19 PREVENTION PLAN](#)

©2021 Cushman & Wakefield. All rights reserved. The information contained in this communication is strictly confidential. This information has been obtained from sources believed to be reliable but has not been verified. NO WARRANTY OR REPRESENTATION, EXPRESS OR IMPLIED, IS MADE AS TO THE CONDITION OF THE PROPERTY (OR PROPERTIES) REFERENCED HEREIN OR AS TO THE ACCURACY OR COMPLETENESS OF THE INFORMATION CONTAINED HEREIN, AND SAME IS SUBMITTED SUBJECT TO ERRORS, OMISSIONS, CHANGE OF PRICE, RENTAL OR OTHER CONDITIONS, WITHDRAWAL WITHOUT NOTICE, AND TO ANY SPECIAL LISTING CONDITIONS IMPOSED BY THE PROPERTY OWNER(S). ANY PROJECTIONS, OPINIONS OR ESTIMATES ARE SUBJECT TO UNCERTAINTY AND DO NOT SIGNIFY CURRENT OR FUTURE PROPERTY PERFORMANCE.

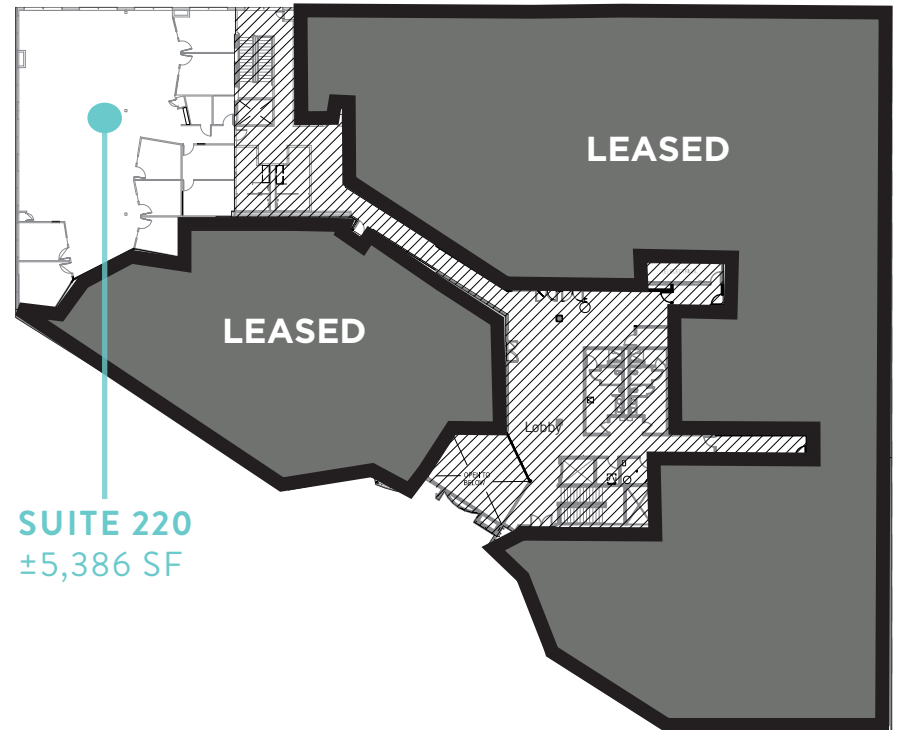
FLOOR PLAN

655 CAMPBELL TECHNOLOGY PARKWAY

FIRST FLOOR: ±28,426 SF



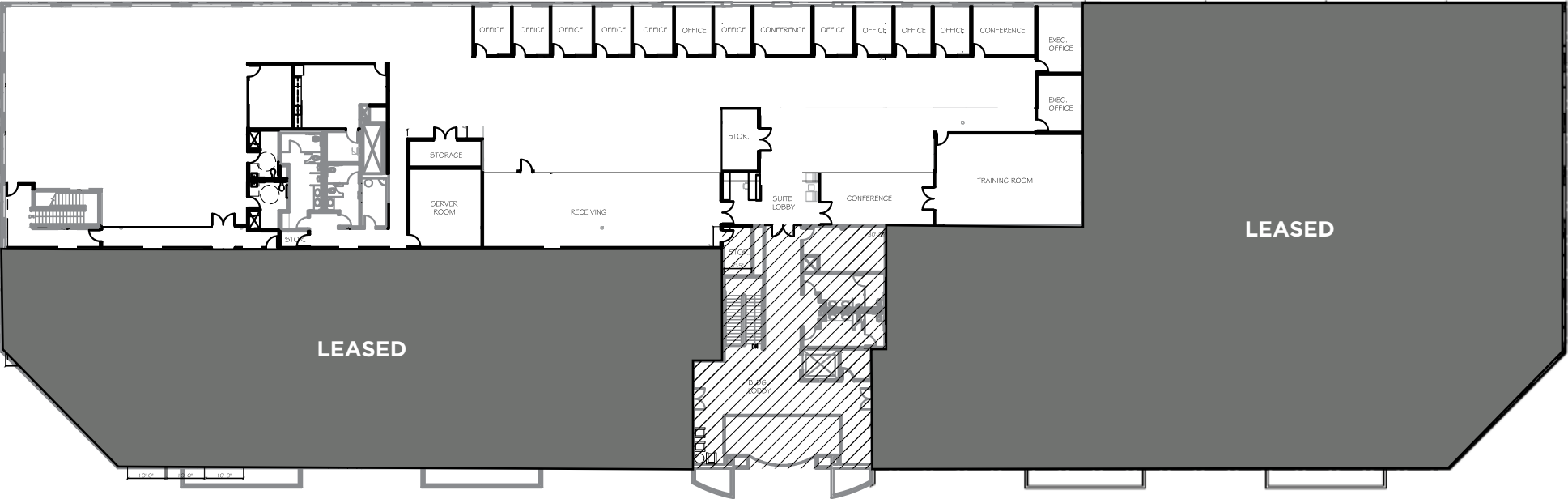
SECOND FLOOR: ±5,386 SF



FLOOR PLAN

675 CAMPBELL TECHNOLOGY PARKWAY

SECOND FLOOR - SUITE 200: ±19,866 SF

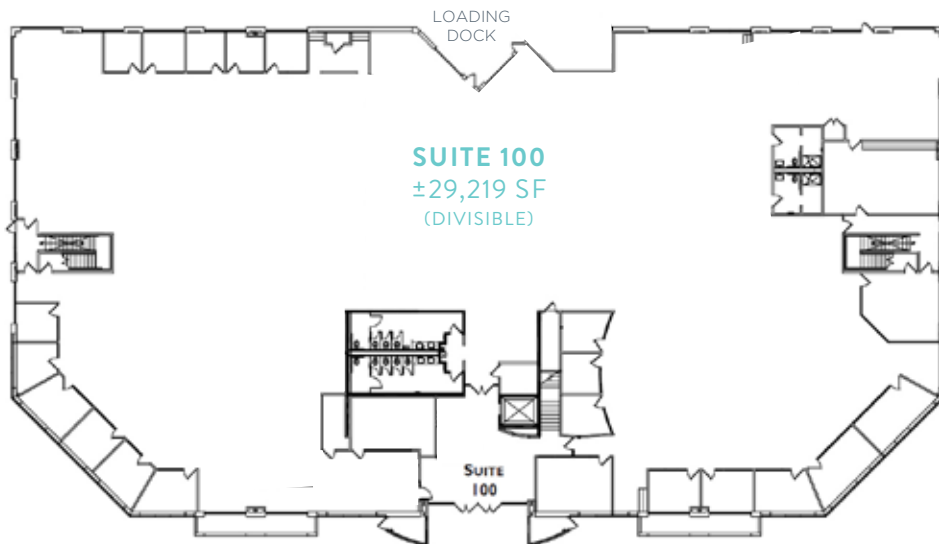


FLOOR PLAN

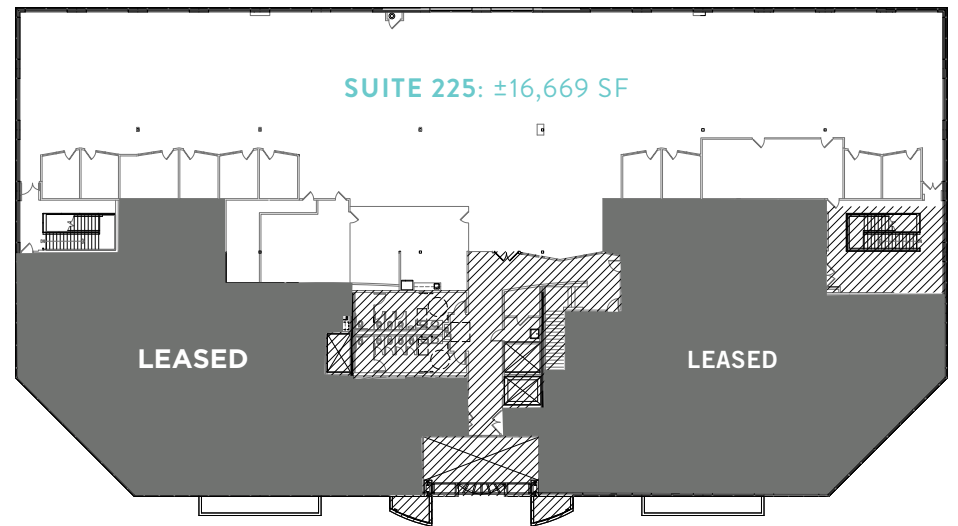
695 CAMPBELL TECHNOLOGY PARKWAY

±16,669 - ±45,888 SF AVAILABLE
CALL FOR FULL BUILDING

FIRST FLOOR: ±29,219 SF (DIVISIBLE)



SECOND FLOOR: ±16,669 SF (DIVISIBLE)



CAMPBELL

TECHNOLOGY PARK



CAMPBELL

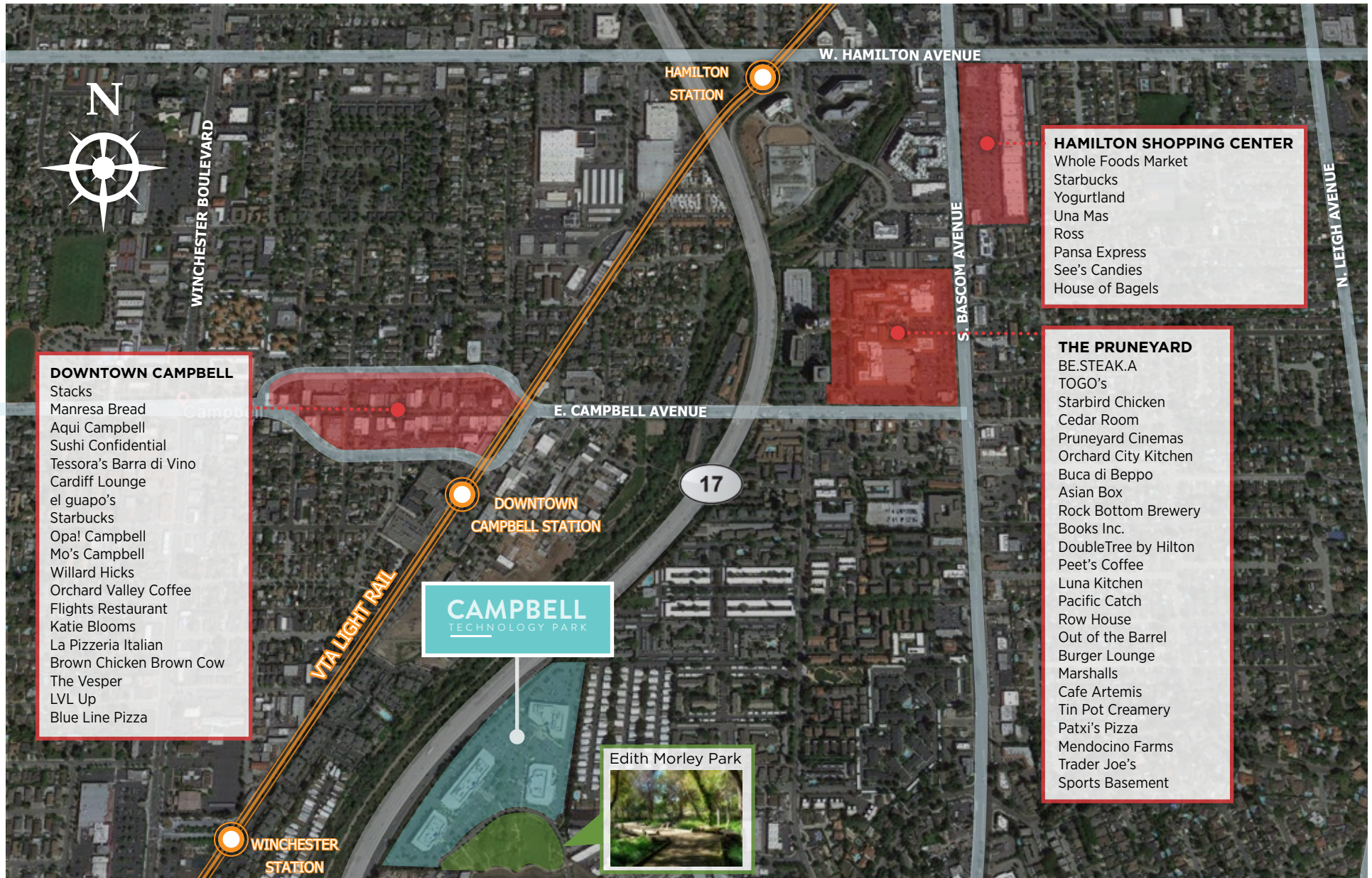
TECHNOLOGY PARK



ACROSS THE STREET
FROM EDITH MORELY
PARK



TRANSPORTATION & AMENITIES



- DOWNTOWN CAMPBELL**
- Stacks
 - Manresa Bread
 - Aqui Campbell
 - Sushi Confidential
 - Tessoro's Barra di Vino
 - Cardiff Lounge
 - el guapo's
 - Starbucks
 - Opa! Campbell
 - Mo's Campbell
 - Willard Hicks
 - Orchard Valley Coffee
 - Flights Restaurant
 - Katie Blooms
 - La Pizzeria Italian
 - Brown Chicken Brown Cow
 - The Vesper
 - LVL Up
 - Blue Line Pizza

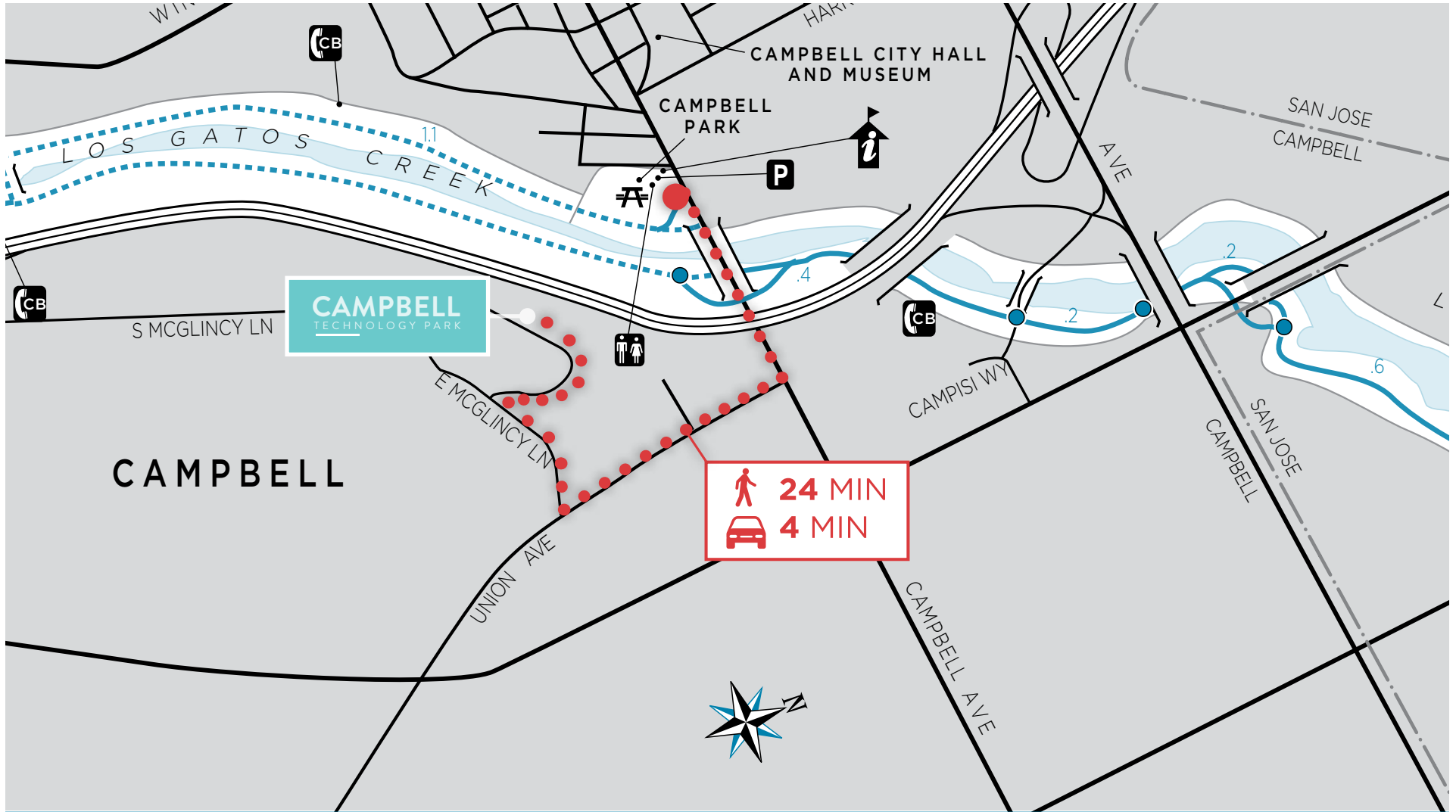
- HAMILTON SHOPPING CENTER**
- Whole Foods Market
 - Starbucks
 - Yogurtland
 - Una Mas
 - Ross
 - Pansa Express
 - See's Candies
 - House of Bagels



- THE PRUNEYARD**
- BE.STEAK.A
 - TOGO's
 - Starbird Chicken
 - Cedar Room
 - Pruneyard Cinemas
 - Orchard City Kitchen
 - Buca di Beppo
 - Asian Box
 - Rock Bottom Brewery
 - Books Inc.
 - DoubleTree by Hilton
 - Pee't's Coffee
 - Luna Kitchen
 - Pacific Catch
 - Row House
 - Out of the Barrel
 - Burger Lounge
 - Marshalls
 - Cafe Artemis
 - Tin Pot Creamery
 - Patxi's Pizza
 - Mendocino Farms
 - Trader Joe's
 - Sports Basement



CAMPBELL
TECHNOLOGY PARK

TRANSPORTATION & AMENITIES



- | | | | |
|---|--|---|--|
|  Park Entrance Kiosk/Information |  Call Box |  Picnic Area |  Paved Multiple Use Trail |
|  Restrooms |  Parking/Trail Access |  Two Lane Paved Road |  PAR Course |