



CUSHMAN &
WAKEFIELD

FOR SUBLEASE
±7,928 SF OFFICE SPACE

PRICE REDUCTION
\$3.00 GROSS



THE PALO ALTO BUSINESS PARK
1121 San Antonio Road

Palo Alto, California

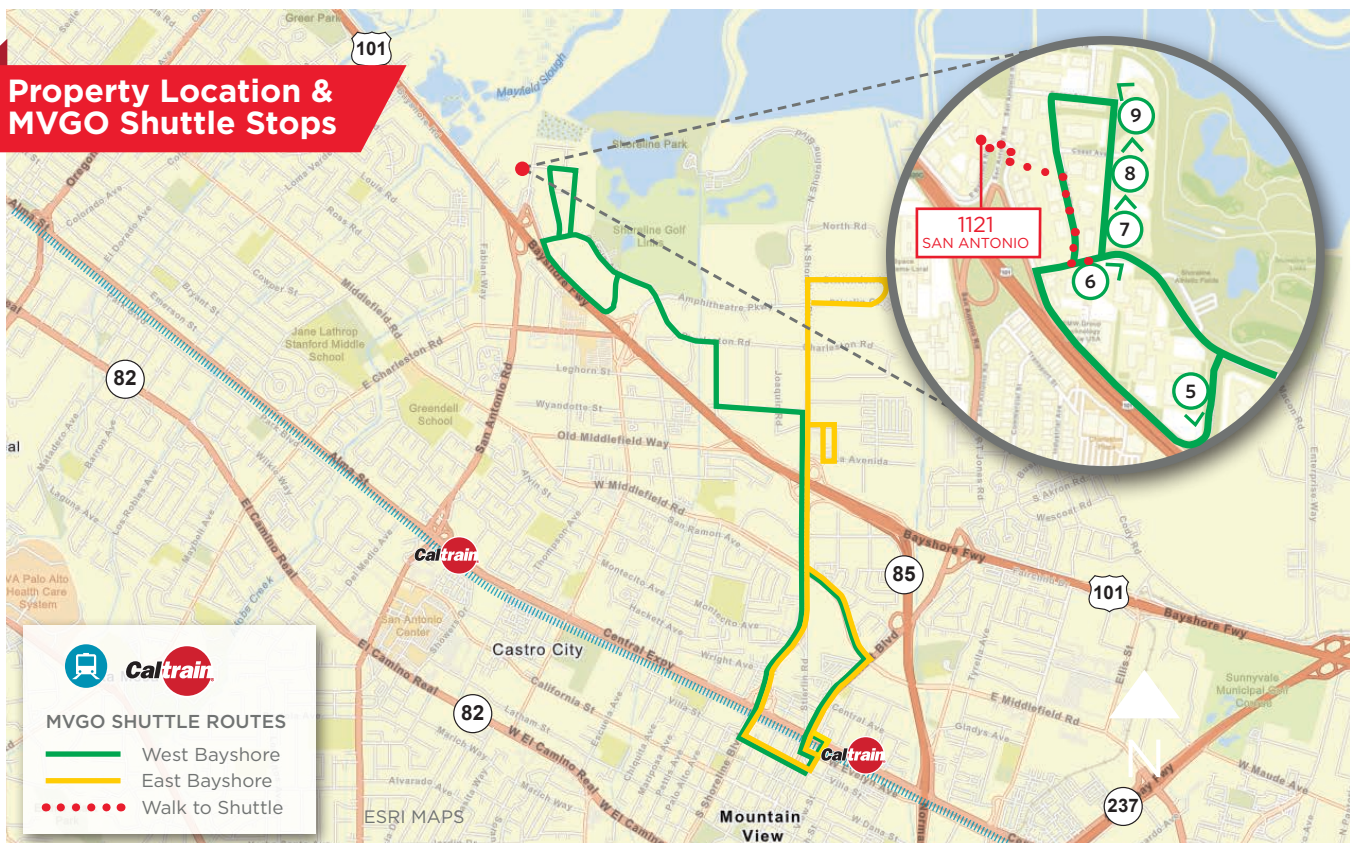
Dan Persyn | Executive Managing Director

+1 650 320 0255 | dan.persyn@cushwake.com | LIC #01184798

Highlights

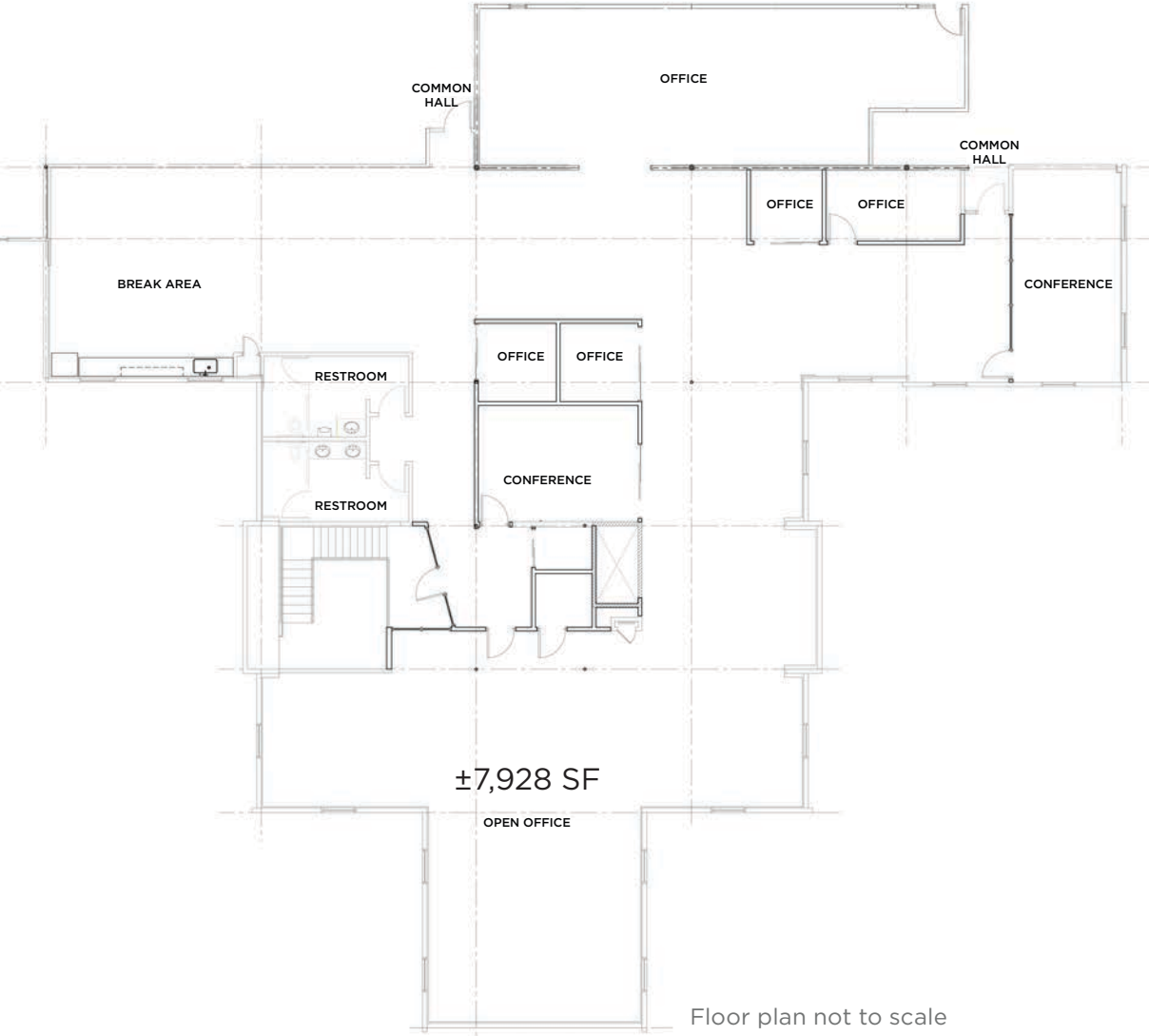
- Exposed Ceiling, Creative Look and Feel. Recently Rebuilt Space
- Immediate Access to Highways 101, 85 & 237 with Easy Connections to Highways 280 and 880
- Free CalTrain Shuttle Available
- Excellent Choice for Start-Up, and Tech Firms
- Desirable Palo Alto Address and Convenient Access to Bayshore Running/Bike Trails
- Available Now
- LED 11/15/20, Longer Term Available Through Landlord

Property Location & MVGO Shuttle Stops

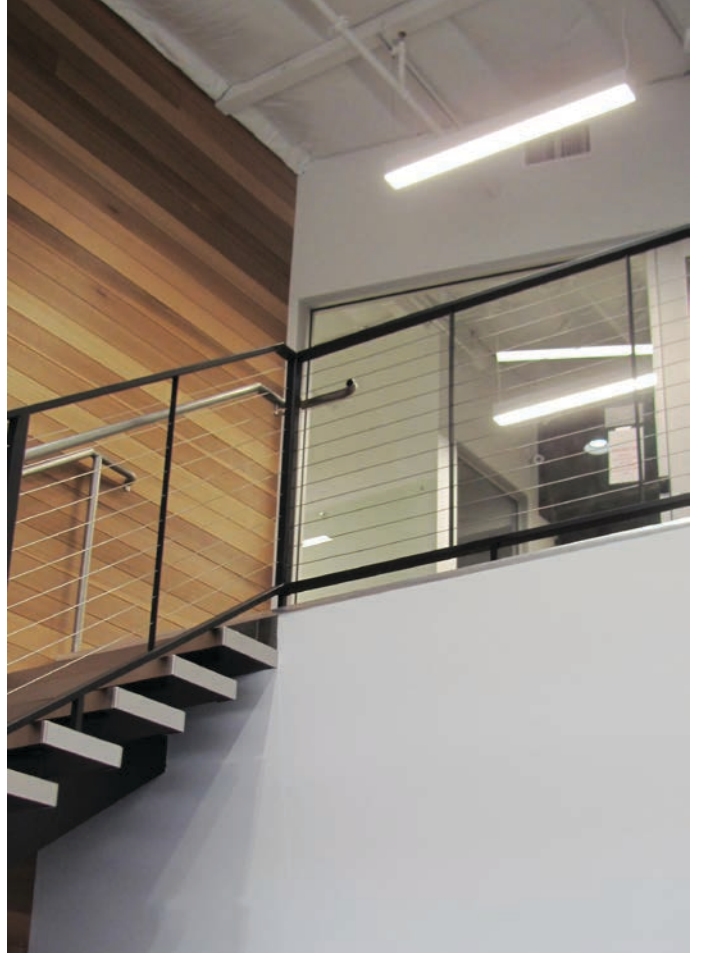


Floor Plan

SUITE A 200 : ±7,928 SF (Second Floor)



Interiors



Amenities Nearby



1121 SAN ANTONIO

- 1 In-n-out
- 2 Chipotle
- 3 Starbucks
- 4 Krispy Kreme
- 5 Costco
- 6 Ross Dress for Less
- 7 Michaels
- 8 Best Buy
- 9 REI
- 10 Bed Bath & Beyond
- 11 PetSmart
- 12 Peet's Coffee
- 13 The Counter
- 14 Veggie Grill
- 15 Pacific Catch
- 16 Trader Joe's
- 17 Jersey Mike's
- 18 Peet's Coffee
- 19 Chef Chu's
- 20 Whole Foods
- 21 Chase Bank
- 22 Citibank
- 23 Safeway
- 24 24 Hour Fitness
- 25 Nekter Juice Bar
- 26 BevMo!
- 27 Walmart
- 28 Target
- 29 Paul Martin's
- 30 Sushi 88 & Ramen



THE PALO ALTO BUSINESS PARK
1121 San Antonio Road
PALO ALTO, CALIFORNIA



For more information contact:

DAN PERSYN

Executive Managing Director
+1 650 320 0255
dan.persyn@cushwake.com
LIC #01184798

525 University Avenue, Suite 220
Palo Alto, California 94301
main +1 650 852 1200
fax +1 650 856 1098
cushmanwakefield.com