



PROSPECT PLACE



2953 BUNKER HILL LANE, SANTA CLARA, CALIFORNIA



PROJECT HIGHLIGHTS

- ±116,888 SF Multi-Tenant Building
- Major Interior & Exterior Renovations Complete
- Furnished Market Ready Suites Available
- 4/1,000 Parking with Rare Covered Parking
- EV Charging Stations
- Grade Level Loading
- Minutes From a Variety of Hotels & Restaurants
- Accessible to HWY 101 and HWY 237





AVAILABILITIES

Multiple Configurations and Contiguous Space Available from $\pm 9,086$ SF to $\pm 69,819$ SF

- **Suite 309:** $\pm 9,086$ SF — Market Ready
- **Suite 305:** $\pm 16,185$ SF — Market Ready
- **Suite 101:** $\pm 13,982$ SF — Fully Furnished
- **Floor 4:** $\pm 30,566$ SF — Available Now





PROJECT RENOVATIONS 

New Entryway,
Outdoor Amenity Area,
Common Areas &
Dramatic 2-Story Lobby





MARKET READY SUITES

Bright Workspaces,
Efficient Floor Plans &
Premium Finishes



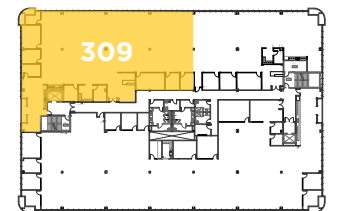
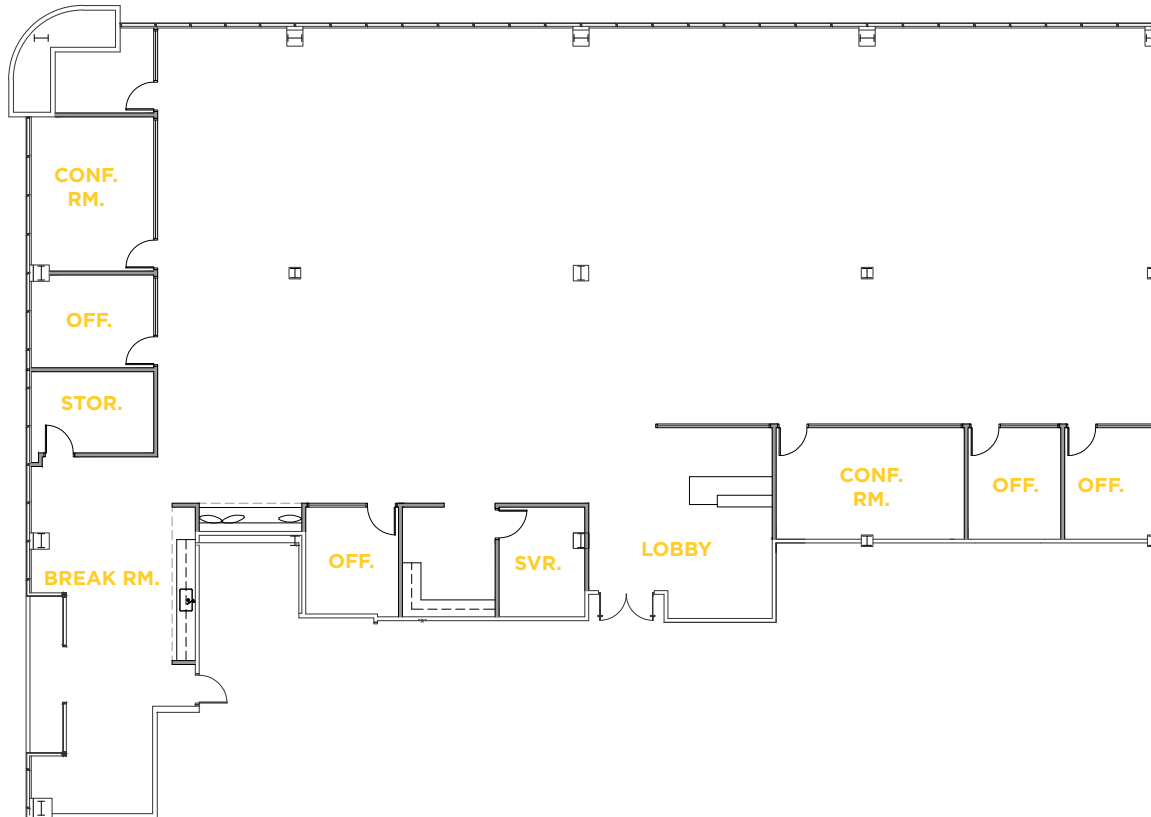


SUITE 309

- 4 Private Offices
- 2 Conference Room
- Break Room
- Server Room
- Storage Room
- Lobby
- Open Office Area
- Private Balcony

±9,086 SF

MARKET READY



BUNKER HILL LANE

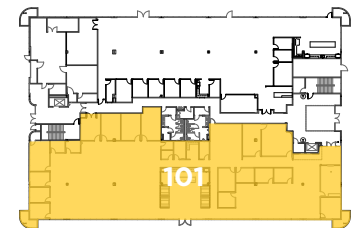
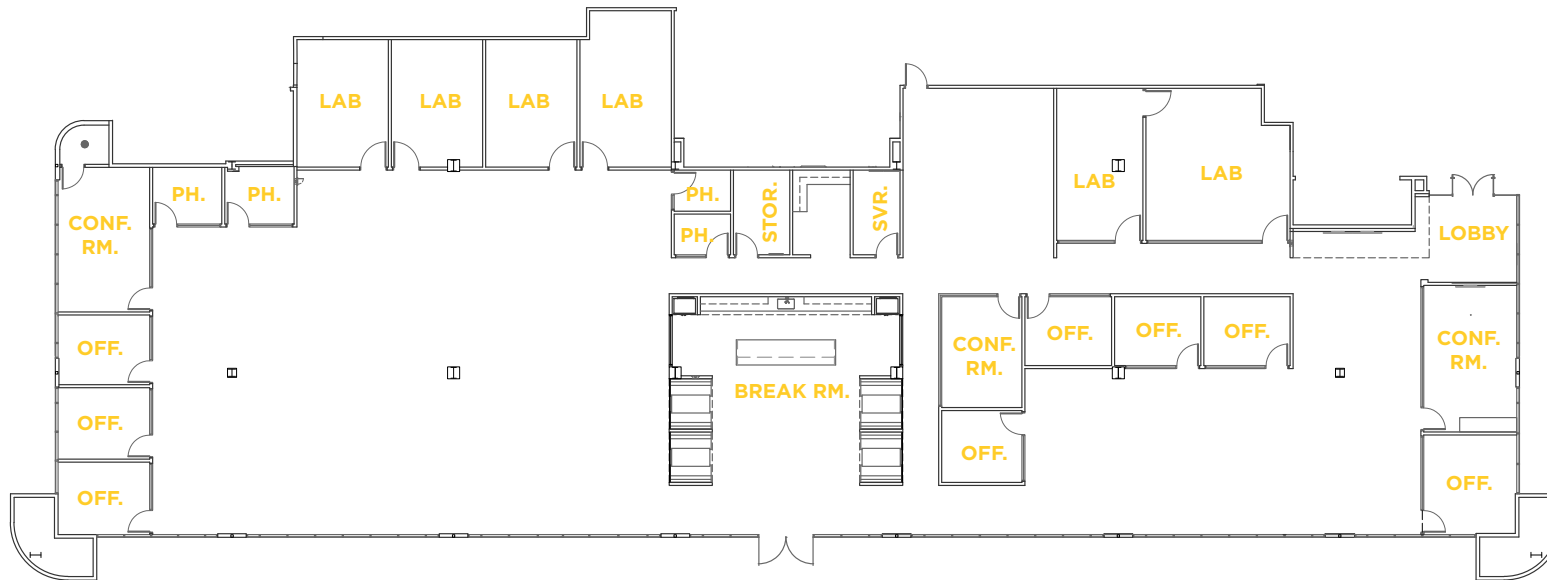


SUITE 101

- 8 Private Offices
- 3 Conference Rooms
- 6 Labs
- Break Room
- Server Room
- Storage Room
- Open Office Area
- 4 Phone Rooms
- Lobby

±13,982 SF

MARKET READY & FULLY FURNISHED



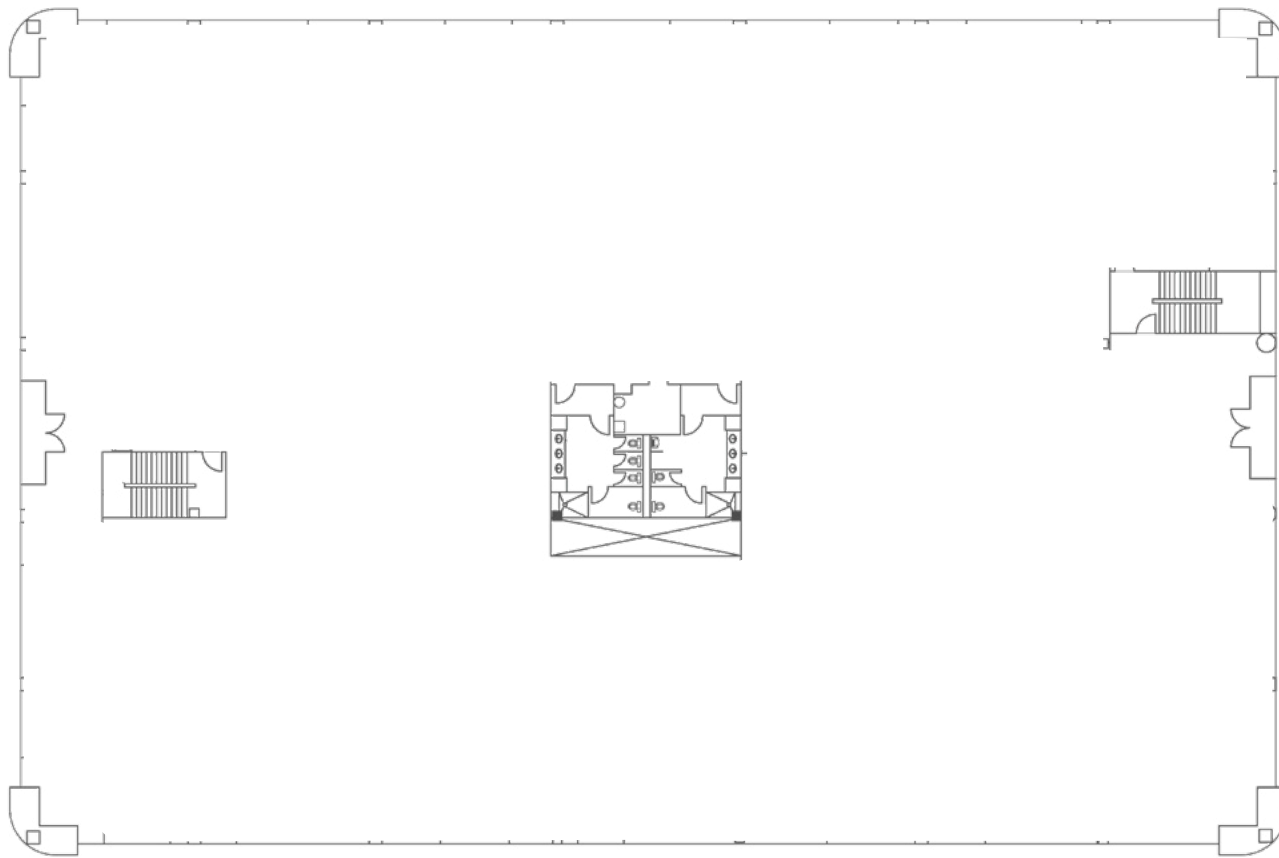
BUNKER HILL LANE



4TH FLOOR

±30,566 SF

AVAILABLE NOW



4TH FLOOR

BUNKER HILL LANE



AMENITIES



PROSPECT PLACE

Planned Retail & Residential

- Taco Bell
- Joe's Chinese
- Togo's Loop Convenient Store
- Bawarchi Indian

- Hyatt Regency
- Truya Sushi
- Evolution Café & Bar @The Market

- Amarin Thai
- Café Falafel
- House of Bagels
- Iguanas
- Round Table Pizza
- Togo's

- In-N-Out
- Tomatina
- Subway
- Panda Express
- Mexicali Grill
- Jamba Juice
- Starbucks
- SmokeEaters
- Krispy Kreme
- World Wrapps
- YoYo Sushi
- Ben & Jerry's

- Whole Foods
- Specialty's Café & Bakery
- Fleming's Steakhouse
- Opa!
- Il Fornaio
- Puesto

237

Polycomm Cafe

Stadium Tech Cafe

Embassy Suites

Lawrence Expressway

Mission College

Great America

Great America Parkway

Tasman Drive

Lafayette Street

Montague Expressway

101

Bourbon Steak

Levi's Stadium

Hilton La Fontana

Marriott Parcel 104

Future Retail Element Hotel

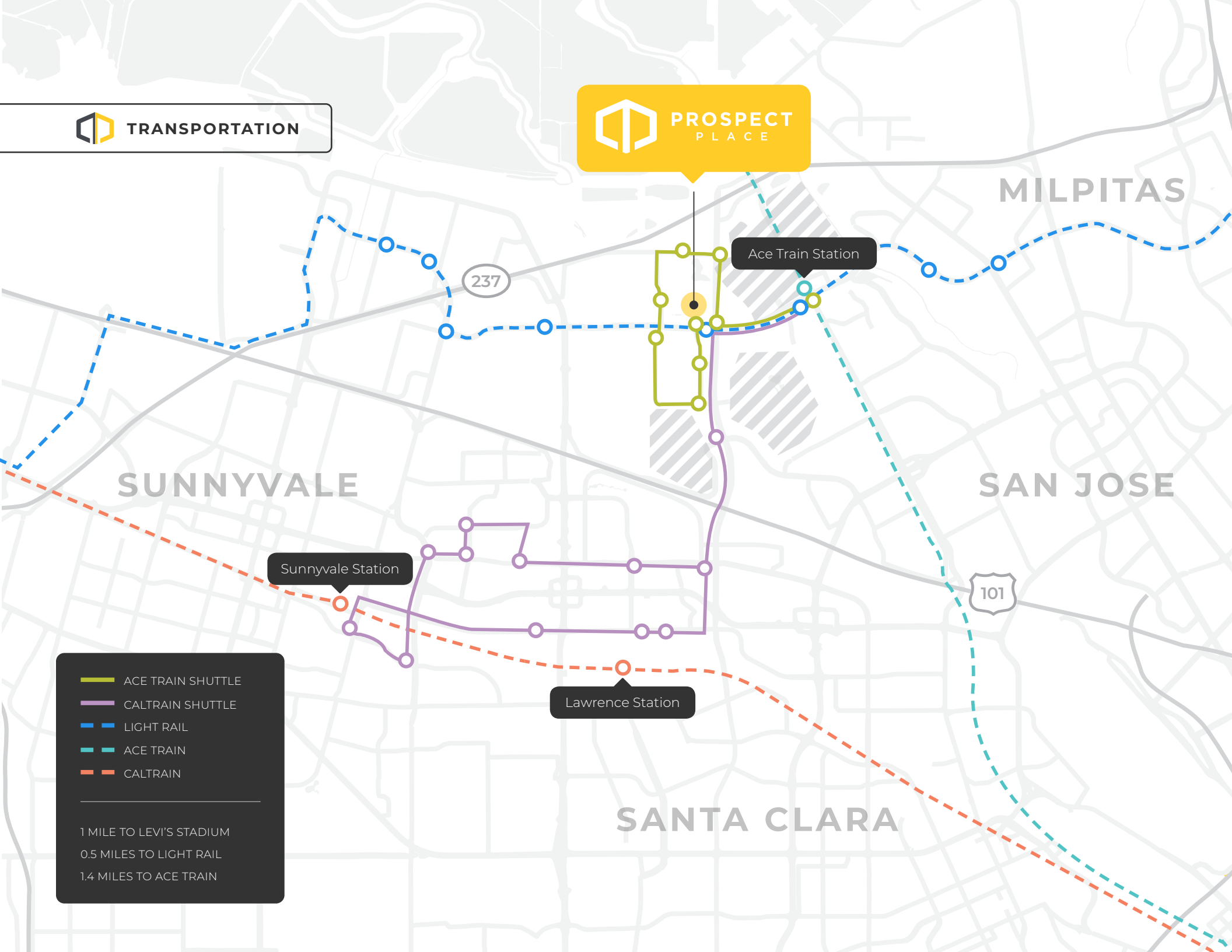
Specialty's Cafe & Bakery

Pedro's Mexican Birk's

- Target
- Panera
- Five Guys
- Sweet Tomatoes
- Chipotle
- Premier Pizza
- Coffee Bean & Tea Leaf
- CVS
- Chick-Fil-A
- Fresh & Easy
- Rok
- Hyatt House
- Courtyard Marriott

- Starbucks
- Safeway
- Fantasia Coffee & Tea
- Red Robin Gourmet Burgers
- Piatti
- Cold Stone Creamery
- Peet's Coffee
- Smashburger
- Premier Pizza
- Jamba Juice
- The Prolific Oven
- Chipotle Mexican Grill
- Mezbaan Bar & Indian
- Posh Bagel
- Yo Yo Sushi
- Jersey Mike's Subs
- Yan Can Asian Bistro
- Hyatt House

 PROSPECT PLACE



-  ACE TRAIN SHUTTLE
-  CALTRAIN SHUTTLE
-  LIGHT RAIL
-  ACE TRAIN
-  CALTRAIN

1 MILE TO LEVI'S STADIUM
0.5 MILES TO LIGHT RAIL
1.4 MILES TO ACE TRAIN



PROSPECT PLACE

BRANDON BAIN

408 615 3416
brandon.bain@cushwake.com
LIC #01308375

ERIK HALLGRIMSON

408 615 3435
erik.hallgrimson@cushwake.com
LIC #01274540

WALT STEPHENSON

408 615 3458
walt.stephenson@cushwake.com
LIC #01793438



BUCHANAN STREET
PARTNERS

©2024 Cushman & Wakefield. All rights reserved. The information contained in this communication is strictly confidential. This information has been obtained from sources believed to be reliable but has not been verified. NO WARRANTY OR REPRESENTATION, EXPRESS OR IMPLIED, IS MADE AS TO THE CONDITION OF THE PROPERTY (OR PROPERTIES) REFERENCED HEREIN OR AS TO THE ACCURACY OR COMPLETENESS OF THE INFORMATION CONTAINED HEREIN, AND SAME IS SUBMITTED SUBJECT TO ERRORS, OMISSIONS, CHANGE OF PRICE, RENTAL OR OTHER CONDITIONS, WITHDRAWAL WITHOUT NOTICE, AND TO ANY SPECIAL LISTING CONDITIONS IMPOSED BY THE PROPERTY OWNER(S). ANY PROJECTIONS, OPINIONS OR ESTIMATES ARE SUBJECT TO UNCERTAINTY AND DO NOT SIGNIFY CURRENT OR FUTURE PROPERTY PERFORMANCE. COE-PM-West-10.30.2024

2953 BUNKER HILL LANE, SANTA CLARA, CALIFORNIA