

2290 N. FIRST STREET

±1,050 SF - ±9,691 SF | OFFICES FOR LEASE



JON DECOITE | Managing Director | P +1 408 615 3408 | jon.decoite@cushwake.com | LIC #01471300

MIKE BAKER | Director | P +1 408 615 3406 | mike.baker@cushwake.com | LIC #01884037

SWENSON

CUSHMAN & WAKEFIELD

©2024 Cushman & Wakefield. All rights reserved. The information contained in this communication is strictly confidential. This information has been obtained from sources believed to be reliable but has not been verified. NO WARRANTY OR REPRESENTATION, EXPRESS OR IMPLIED, IS MADE AS TO THE CONDITION OF THE PROPERTY (OR PROPERTIES) REFERENCED HEREIN OR AS TO THE ACCURACY OR COMPLETENESS OF THE INFORMATION CONTAINED HEREIN, AND SAME IS SUBMITTED SUBJECT TO ERRORS, OMISSIONS, CHANGE OF PRICE, RENTAL OR OTHER CONDITIONS, WITHDRAWAL WITHOUT NOTICE, AND TO ANY SPECIAL LISTING CONDITIONS IMPOSED BY THE PROPERTY OWNER(S). ANY PROJECTIONS, OPINIONS OR ESTIMATES ARE SUBJECT TO UNCERTAINTY AND DO NOT SIGNIFY CURRENT OR FUTURE PROPERTY PERFORMANCE.

2290 N. FIRST STREET

AVAILABILITY

SUITE 209: ±1,050 SF
Available Now

SUITE 333: ±2,175 SF
Available Now

SUITE 300: ±3,008 SF
Available Now

SUITE 202B: ±3,098 SF
Available Now

SUITE 204/208: ±6,036 SF*
Available Now

SUITE 102: ±9,208 SF
Available February 1, 2025

SUITE 101: ±9,691 SF
Available Now

*Can Be Demised to
±3,696 SF & ±2,340 SF

HIGHLIGHTS

- Prominent Corner Location in North San Jose
- Immediate Access to Highways 101, 87 & the San Jose Airport
- Abundant Amenities within Walking Distance
- Light Rail Station Immediately in Front of the Building
- Showers in Building
- ±3.8/1,000 Parking

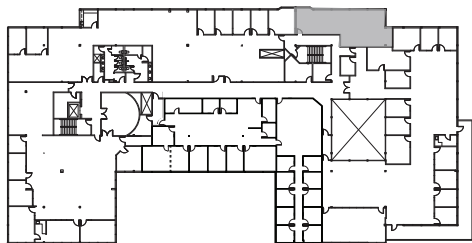
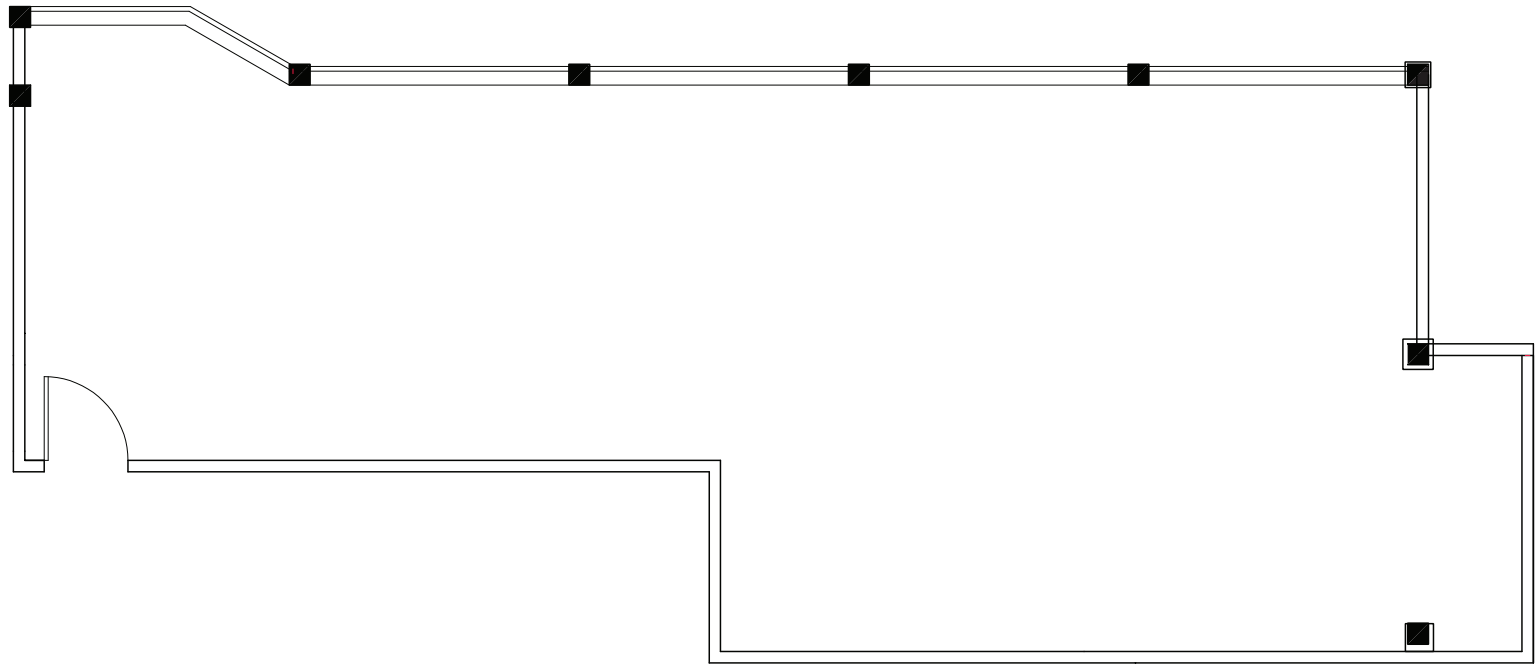


2290 N. FIRST STREET

FLOOR PLAN

SUITE 209: ±1,050 SF

Available Now

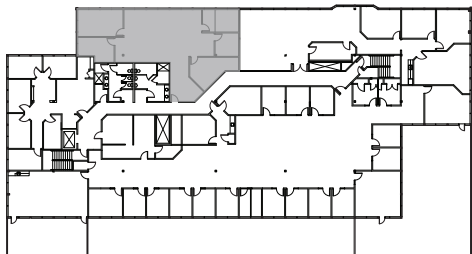
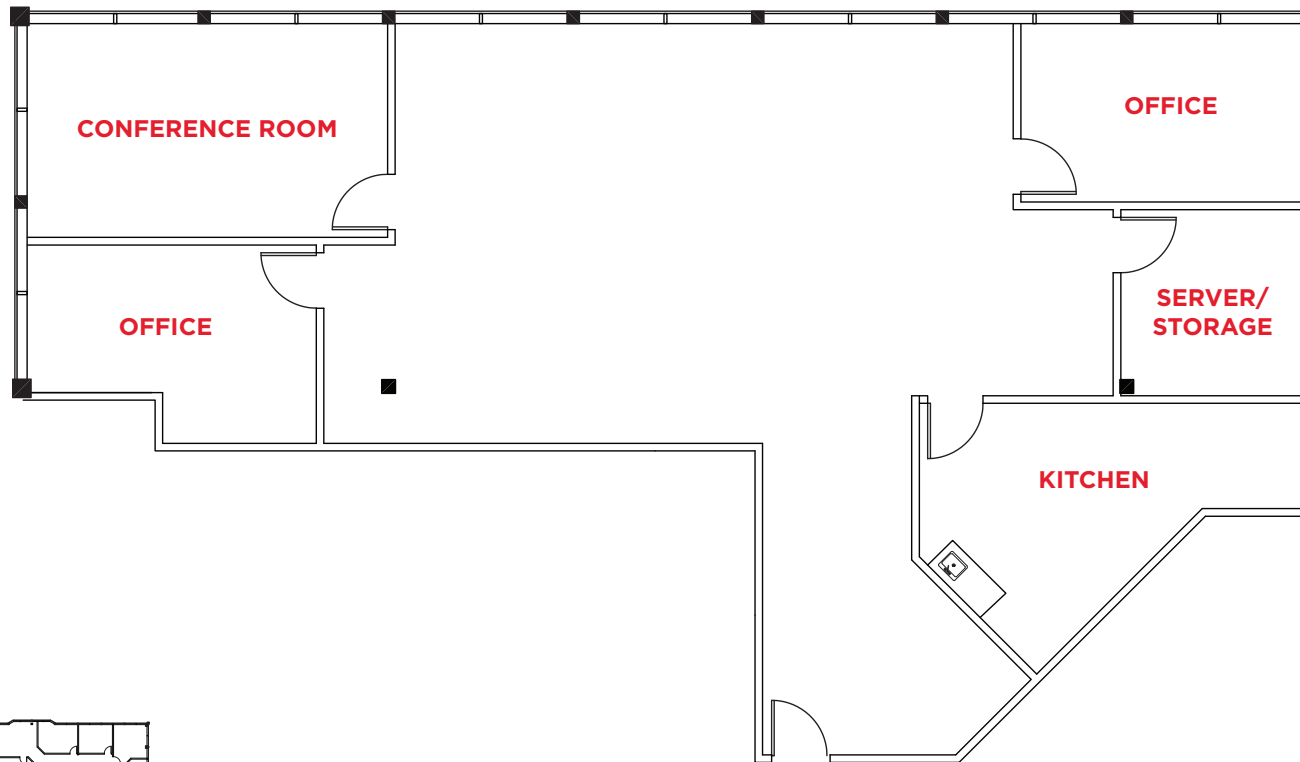


2290 N. FIRST STREET

FLOOR PLAN

SUITE 333: ±2,175 SF

Available Now

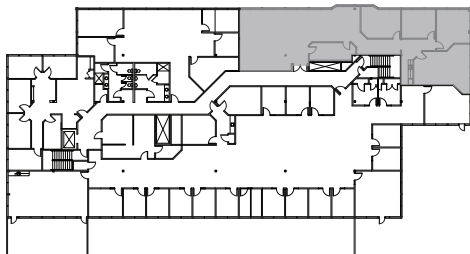
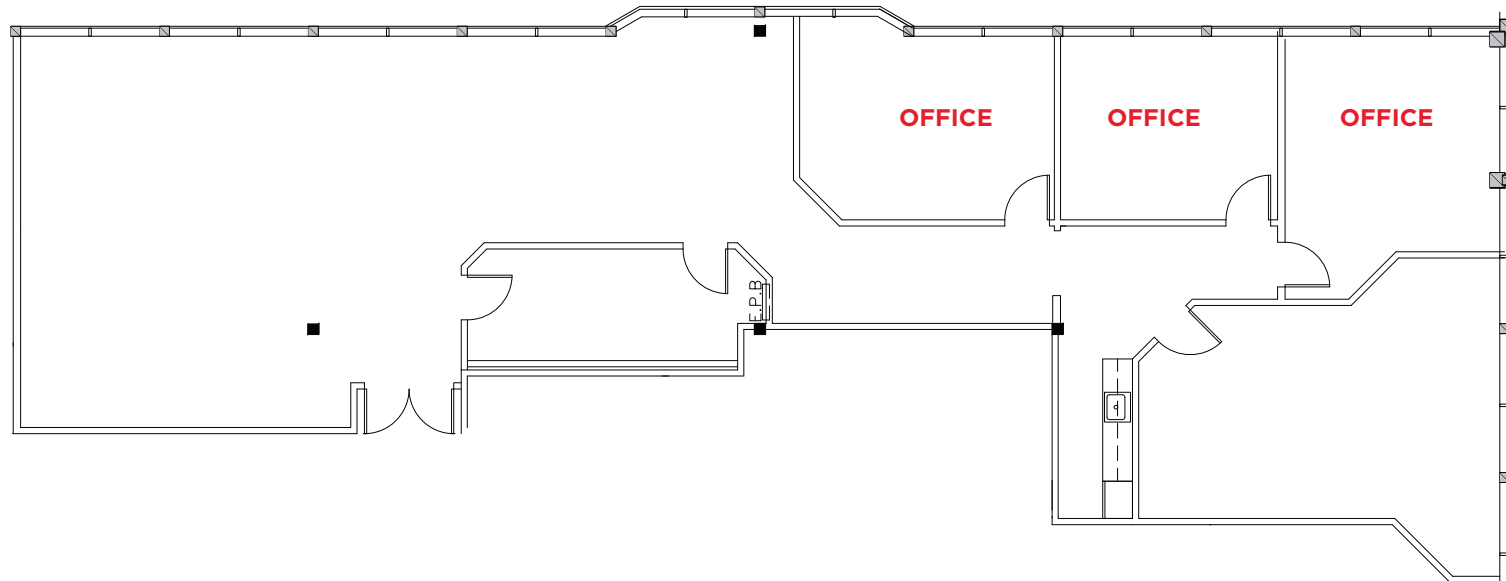


2290 N. FIRST STREET

FLOOR PLAN

SUITE 300: ±3,008 SF

Available Now

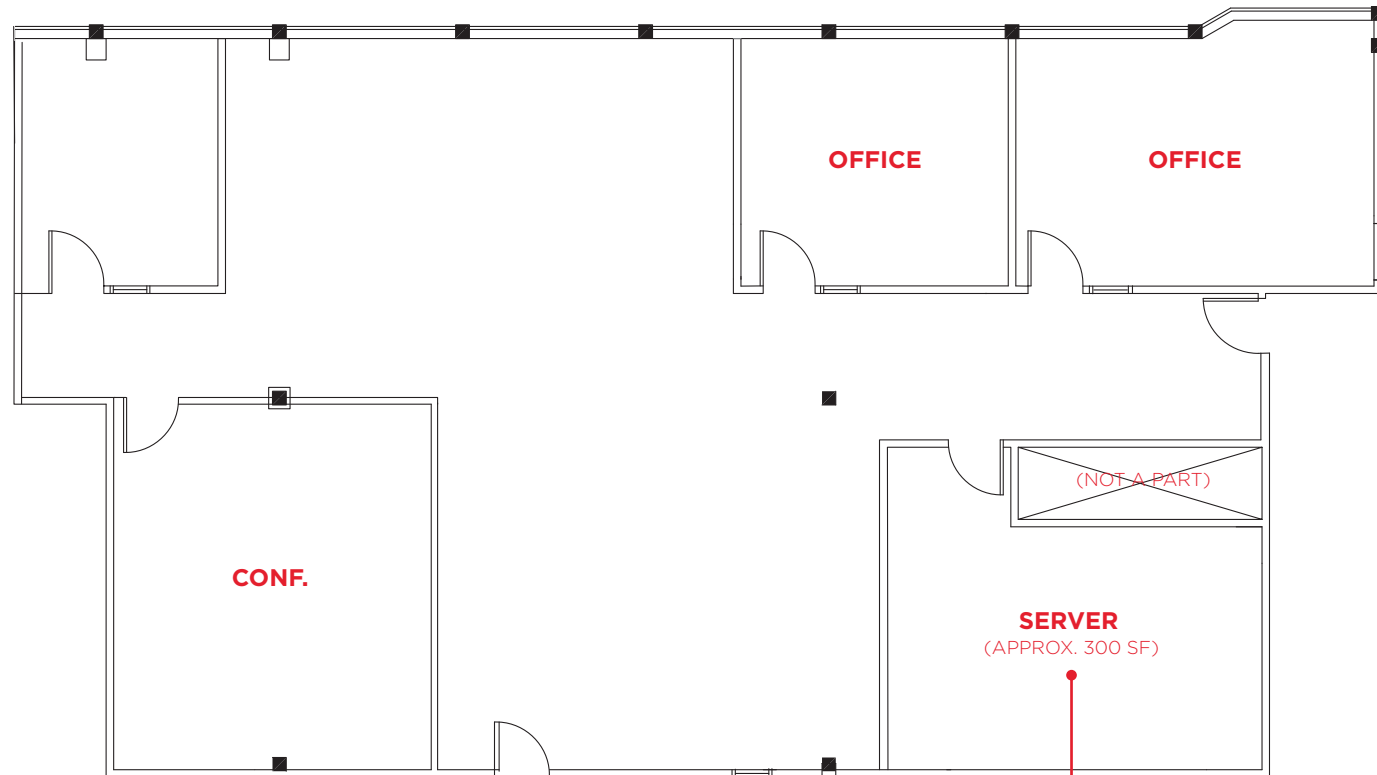


2290 N. FIRST STREET

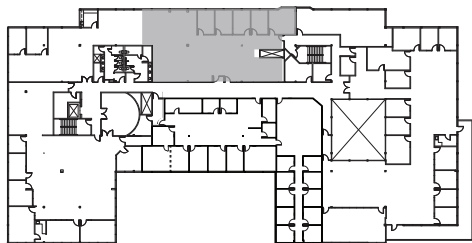
FLOOR PLAN

SUITE 202B: ±3,098 SF

Available Now



SUPPLEMENTAL
POWER AND HVAC



2290 N. FIRST STREET

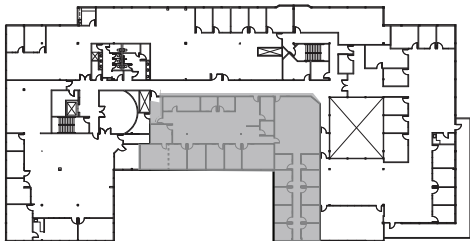
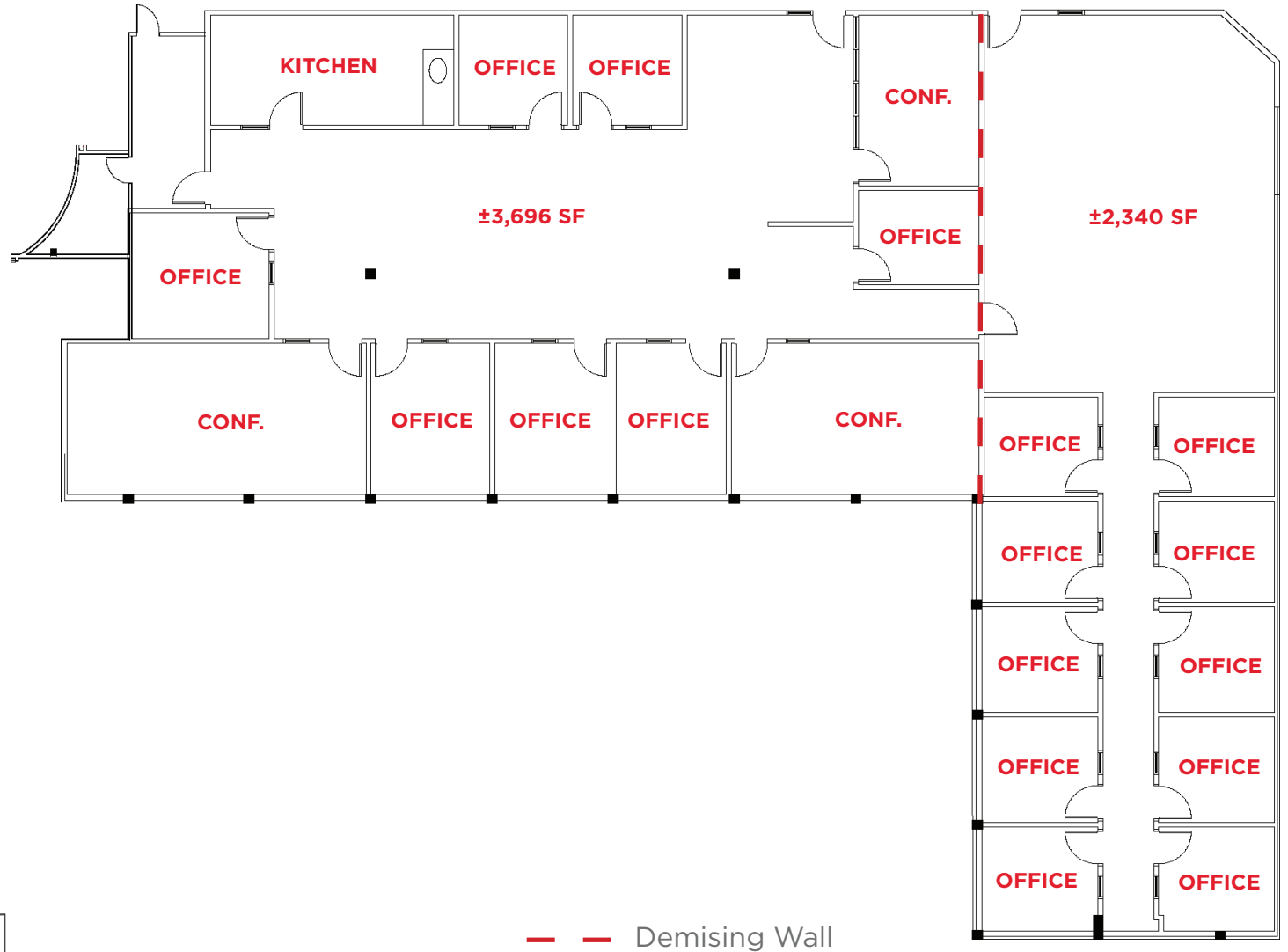
FLOOR PLAN

SUITE 204/208:

±6,036 SF*

Available Now

*Can Be Demised to
±3,696 SF & ±2,340 SF

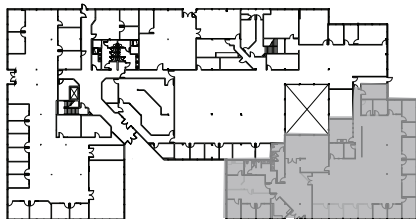
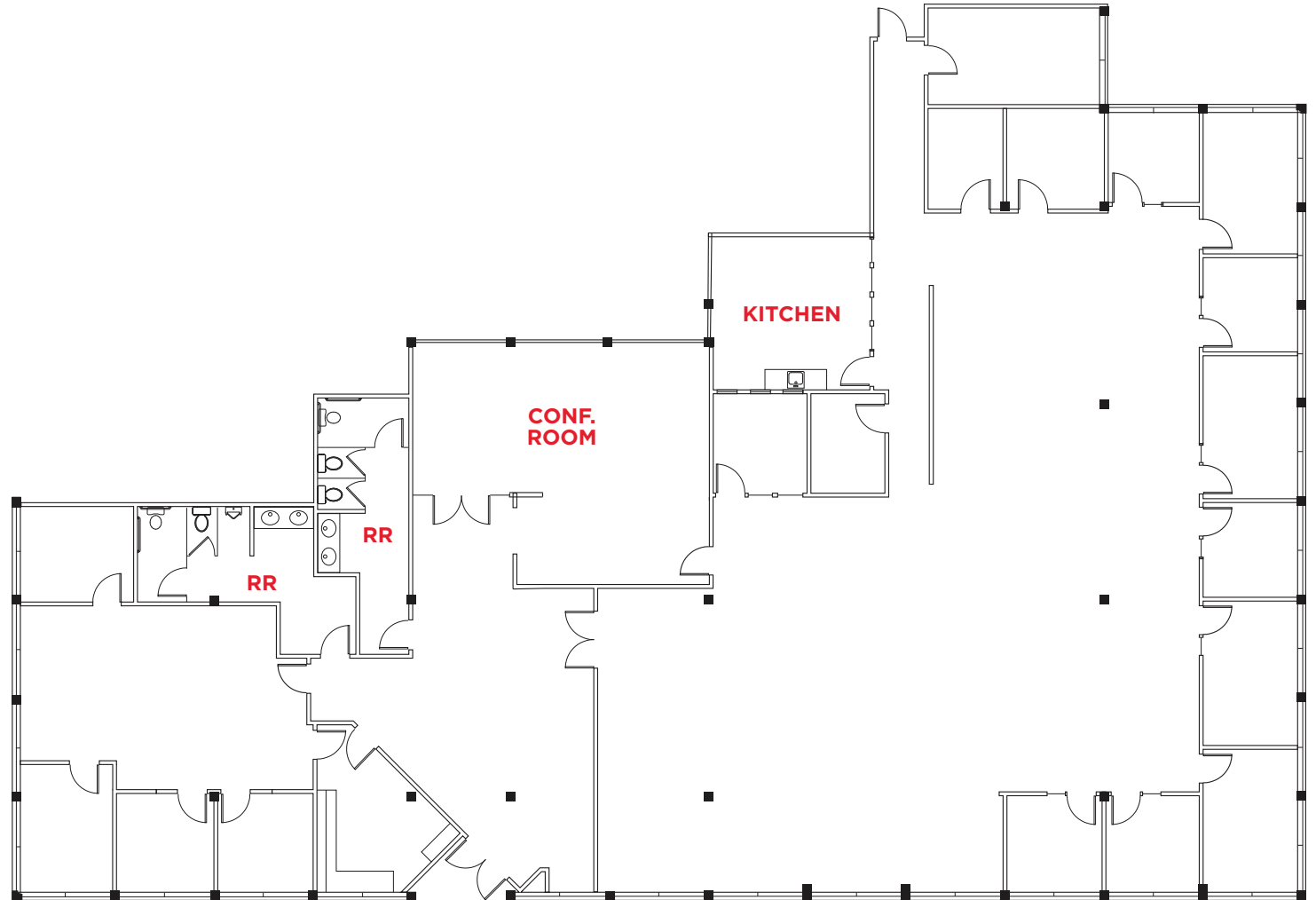


2290 N. FIRST STREET

FLOOR PLAN

SUITE 102: ±9,208 SF

Available February 1, 2025

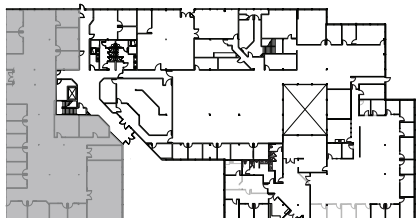
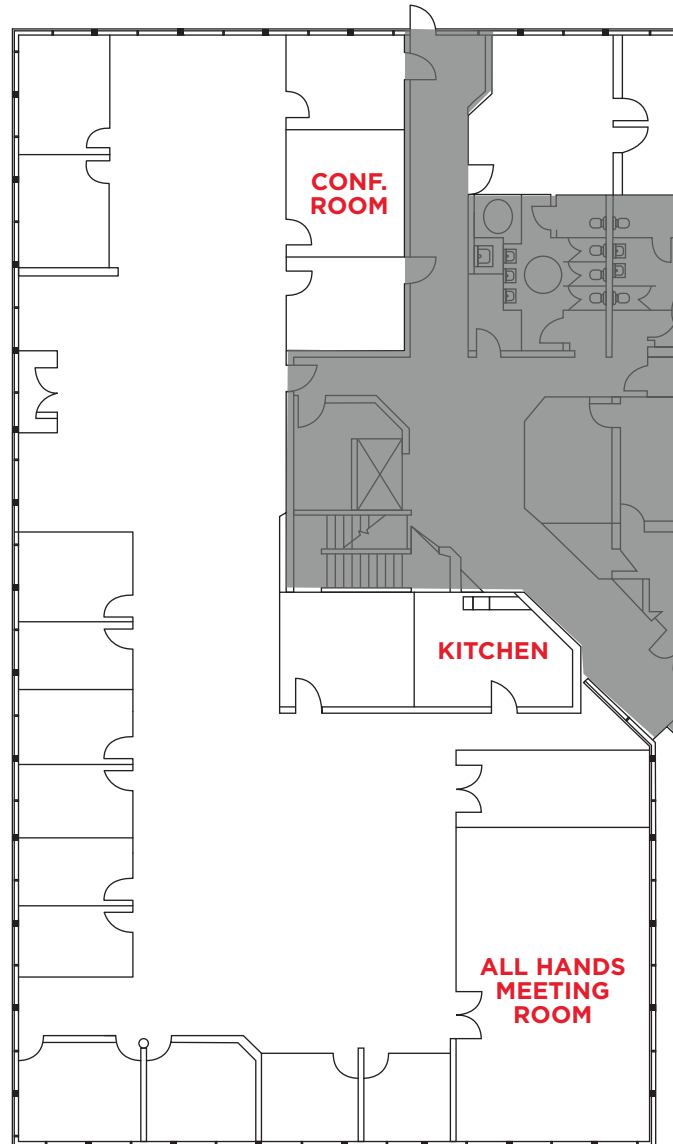


2290 N. FIRST STREET

FLOOR PLAN

SUITE 101: ±9,691 SF

Available Now



2290 N. FIRST STREET

LOCATION

2290 North First Street is located on the east side of North First Street, North of Brokaw and south of Charcot Avenue, approximately 1 mile east of Highway 101.

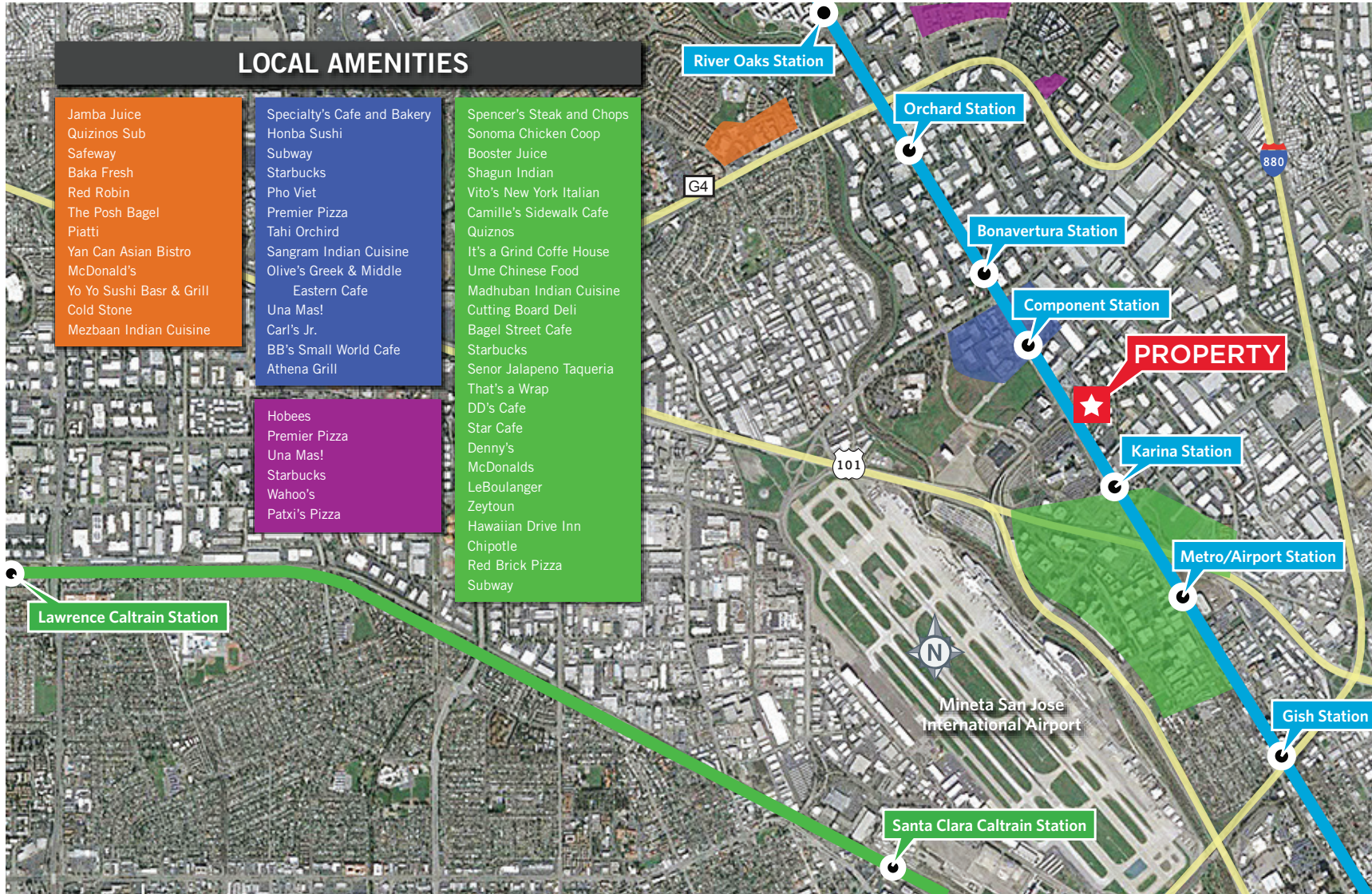
The Property is centrally located with easy access to Highways 101, 880 and 87.



- ◆ Planned BART station
- Existing and Future VTA Light Rail Stations
- Caltrain Station
- Planned BART Extension
- VTA Light Rail
- Caltrain

2290 N. FIRST STREET

AMENITIES MAP



2290 N. FIRST STREET

±1,050 SF - ±9,691 SF | OFFICES FOR LEASE

JON DECOITE | Managing Director | P +1 408 615 3408 | jon.decoite@cushwake.com | LIC #01471300

MIKE BAKER | Director | P +1 408 615 3406 | mike.baker@cushwake.com | LIC #01884037

SWENSON

