

1340 S. DE ANZA BOULEVARD



Contact

CLARK STEELE
+1 408 436 3653
clark.steele@cushwake.com
LIC #01995379

TENNY TSAI
+1 408 436 3671
tenny.tsai@cushwake.com
LIC #00966186

GROUND FLOOR SUITES NOW AVAILABLE!

±846 - ±2,182 SF OFFICE SPACES FOR LEASE IN SAN JOSE



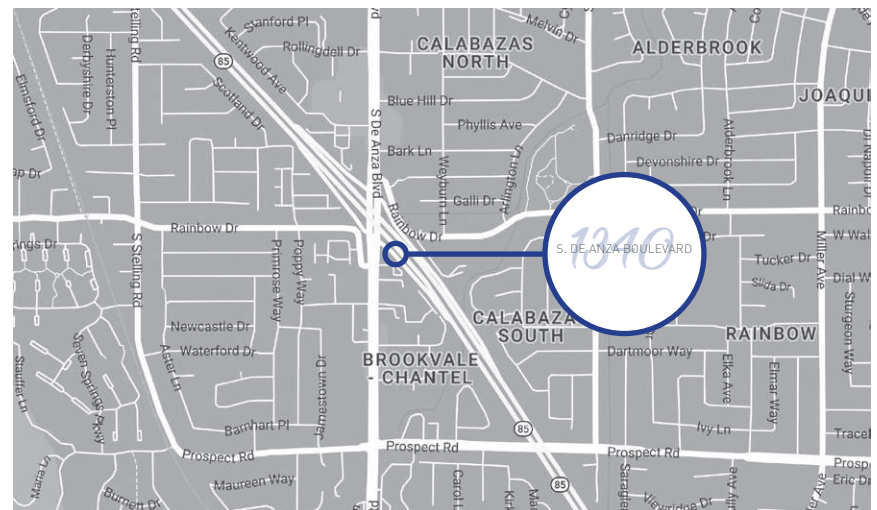
1340 S. DE ANZA BOULEVARD

BUILDING HIGHLIGHTS

- Located Immediately Off Highway 85
- Beautiful Atrium with Seating
- Ample Parking @ 4/1000
- Close to Nearby Retail & Amenities
- Three West Valley Downtowns within 10 Minutes
- Great Window Line
- Balconies Off All Suites on Second Floor
- Building Upgrades Underway

AVAILABILITY

SUITE	SIZE	AVAILABLE
102	±1,450 SF	Now
103	±1,702 SF	Now
201	±1,657 SF	Now
202	±846 SF	Now
204	±1,832 SF	Now
205	±2,182 SF	Now





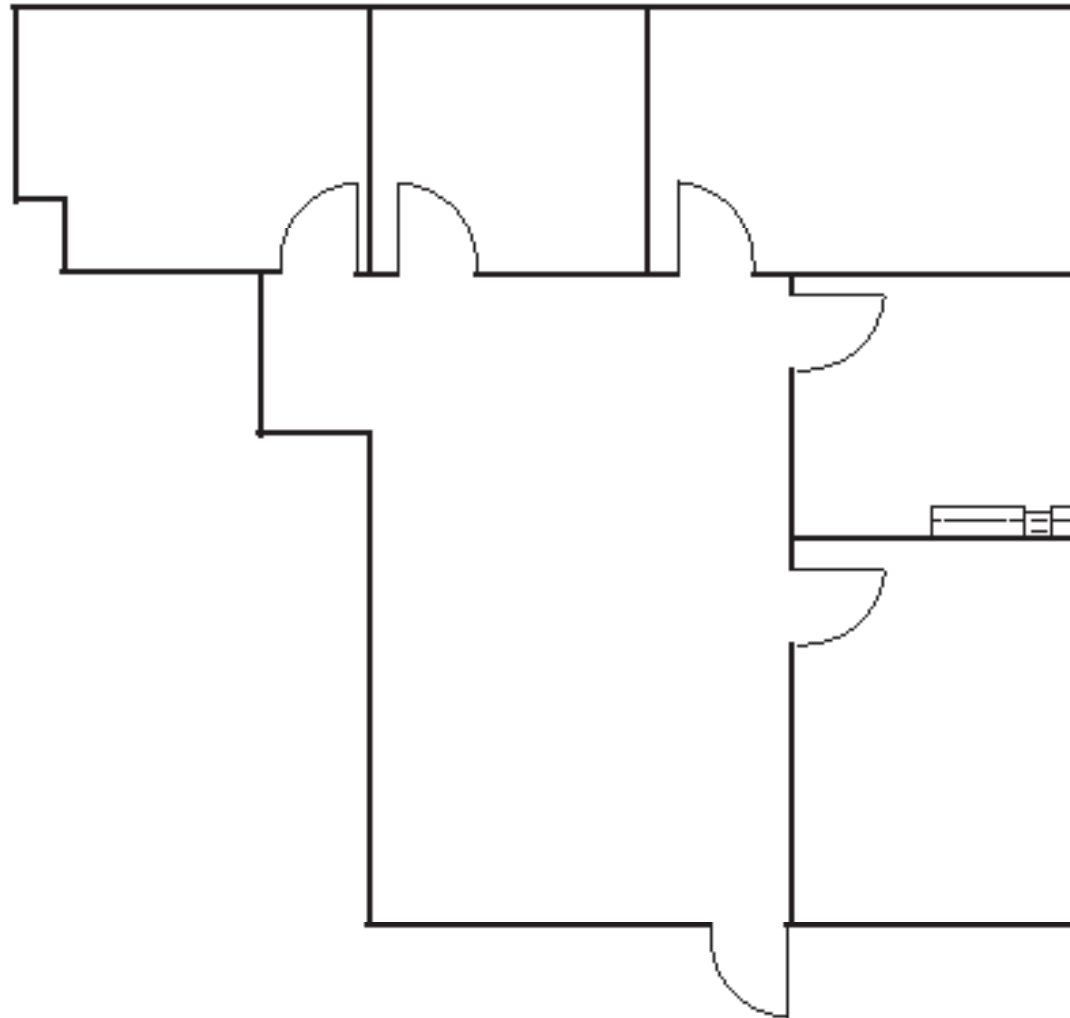
1340
S. DE ANZA BOULEVARD



FLOOR PLAN*

SUITE 102: ±1,450 SF

- 3 Offices
- Conference room
- Kitchen
- Open Office

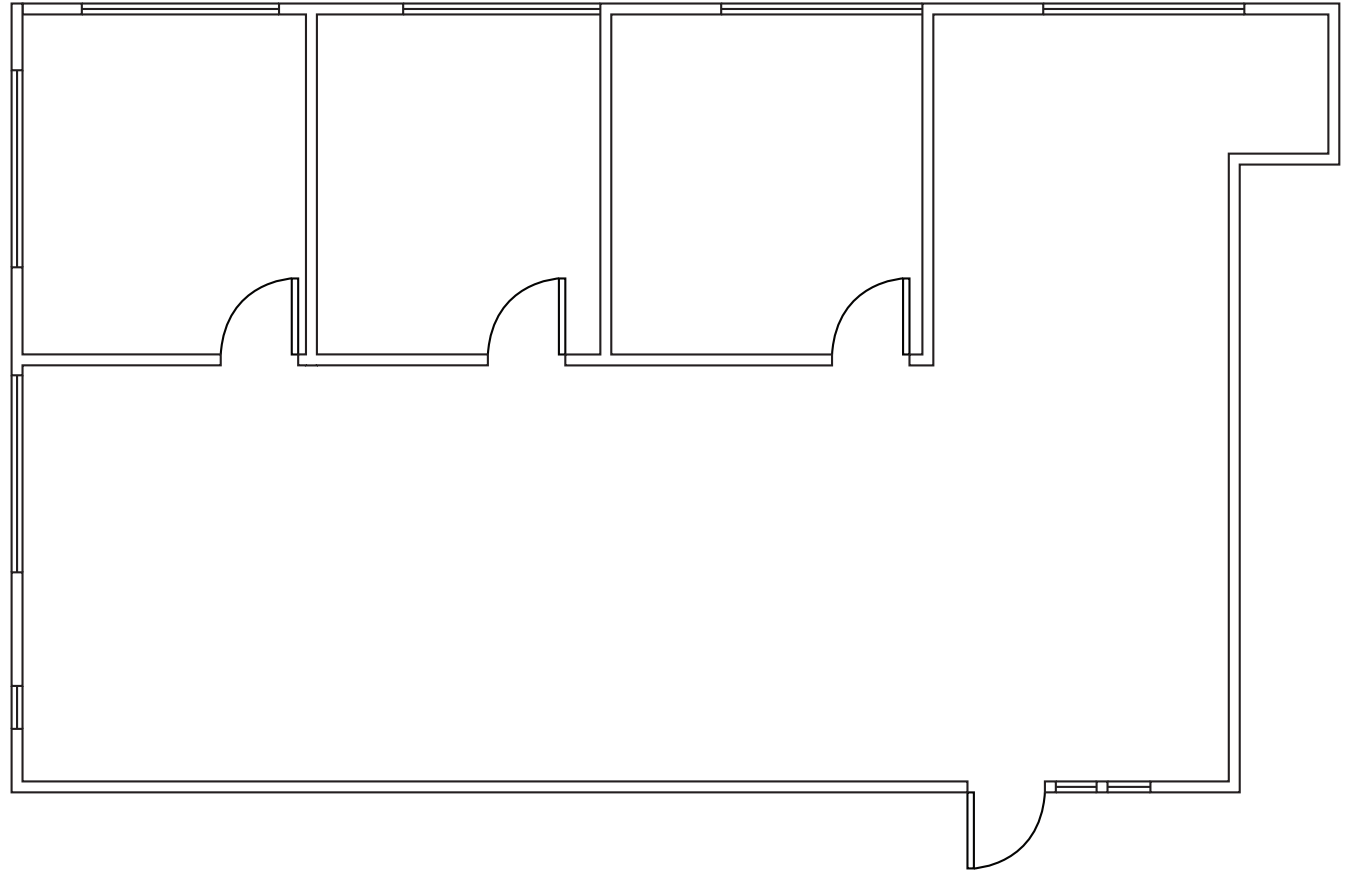


*Floor Plans May Not Be Exact or to Scale

FLOOR PLAN*

SUITE 103: ±1,702 SF

- 3 Offices
- Open Area
- Reception
- Kitchen

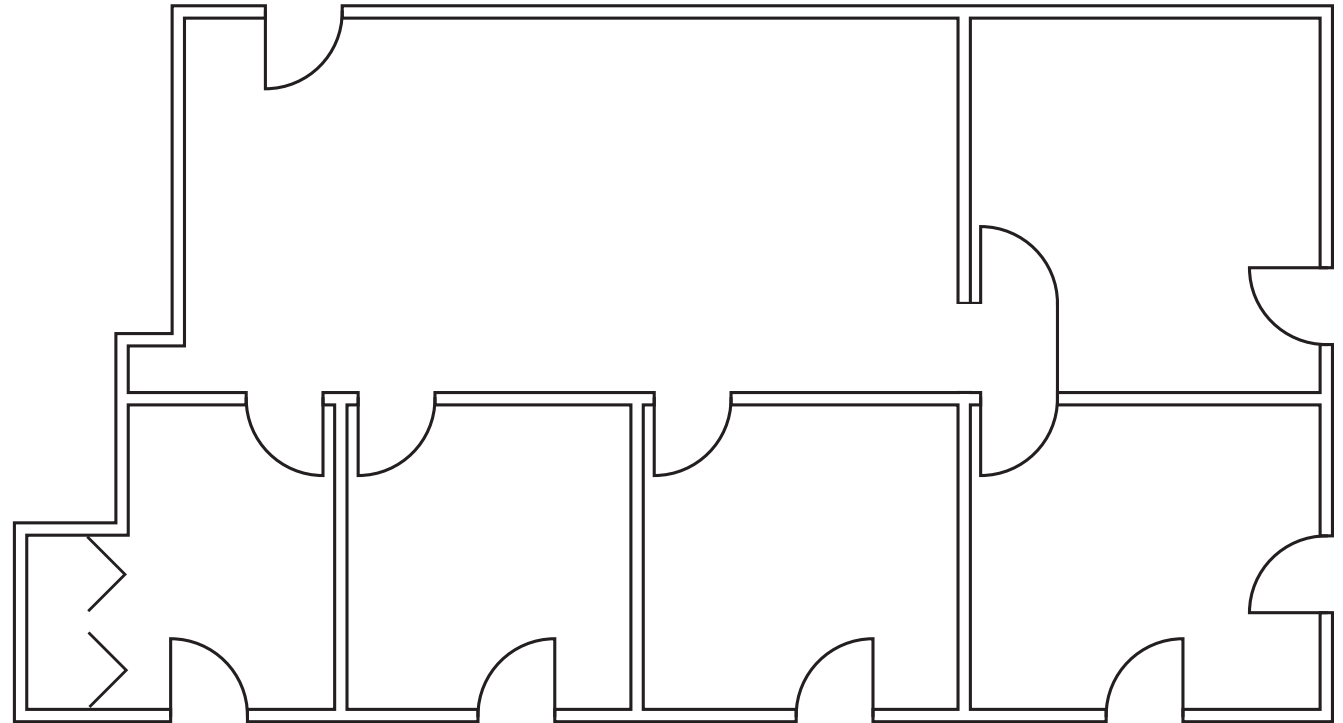


*Floor Plans May Not Be Exact or to Scale

FLOOR PLAN*

SUITE 201: ±1,657 SF

- 4 Offices
- 1 Conference Room
- Open Area

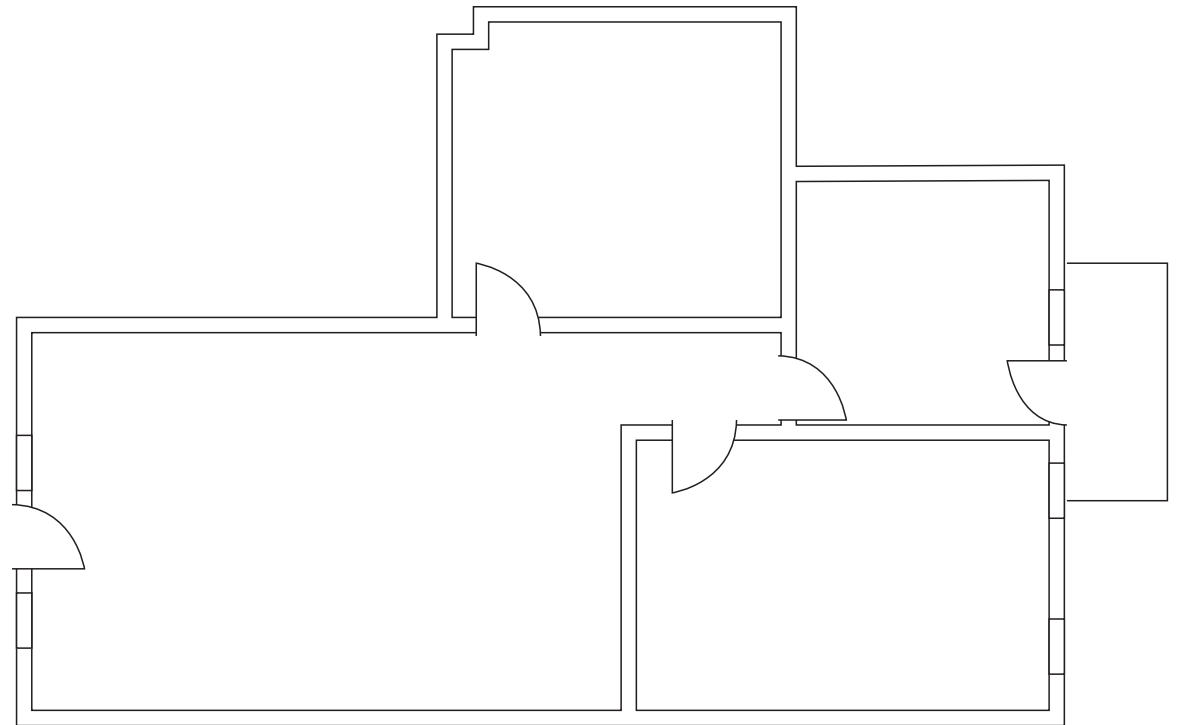


*Floor Plans May Not Be Exact or to Scale

FLOOR PLAN*

SUITE 202: ±846 SF

- 2 Offices
- Conference Room
- Open Area

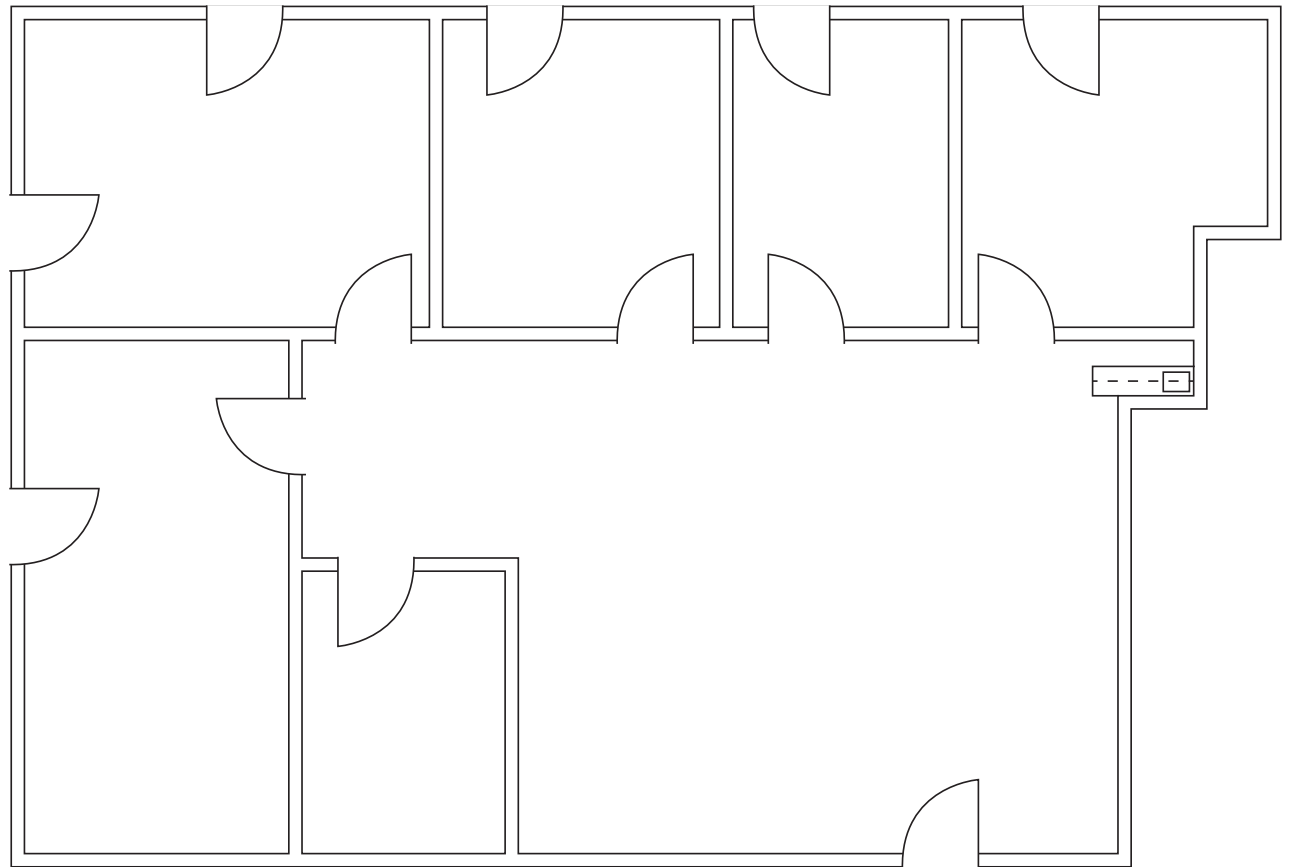


*Floor Plans May Not Be Exact or to Scale

FLOOR PLAN*

SUITE 204: ±1,832 SF

- 3 Offices
- 1 Conference Room
- IT/Storage
- Open Area
- Kitchenette

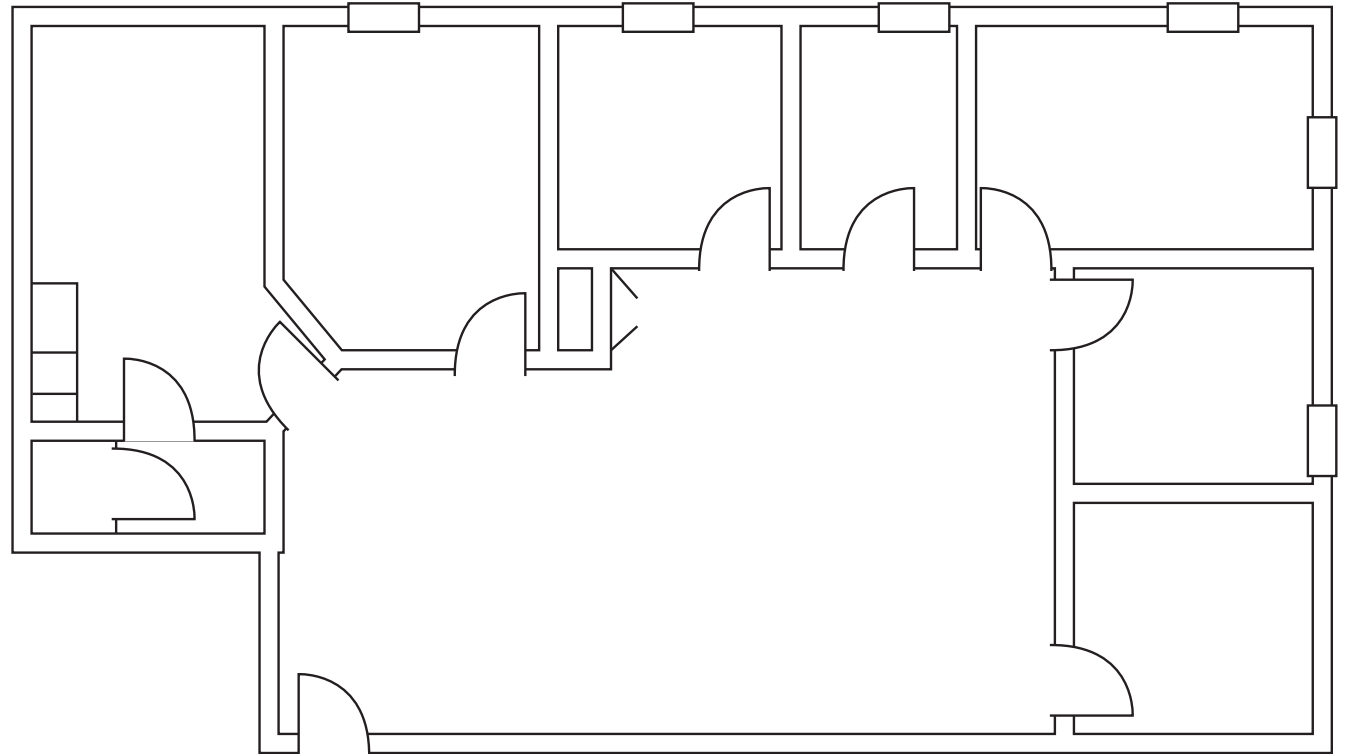


*Floor Plans May Not Be Exact or to Scale

FLOOR PLAN*

SUITE 205: ±2,182 SF

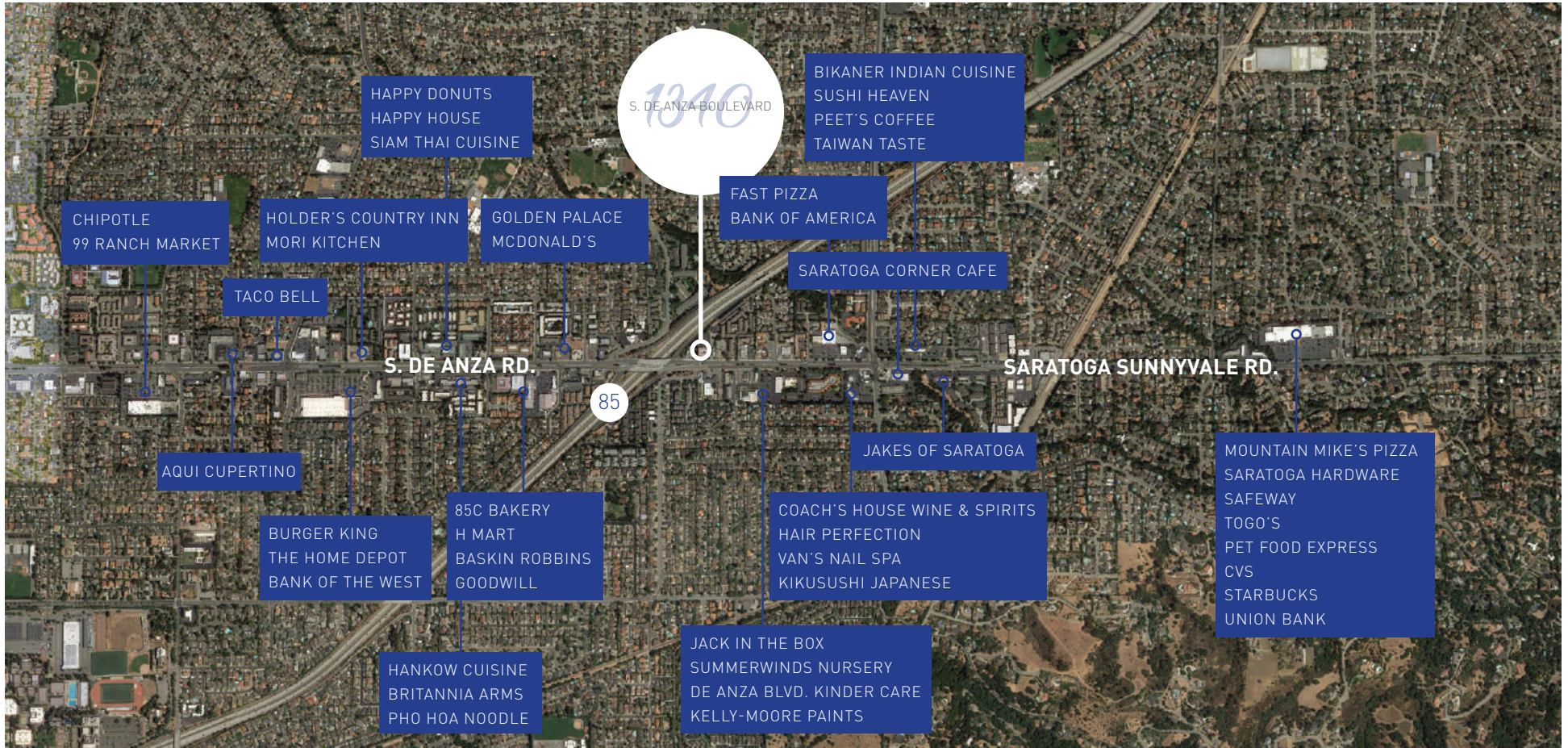
- 4 Offices
- 1 Conference Room
- Storage Area
- IT Room
- Open Area
- Kitchen
- In-Suite Shower



*Floor Plans May Not Be Exact or to Scale

1340 S. DE ANZA BOULEVARD

NEARBY AMENITIES



10 Minutes

DOWNTOWN LOS GATOS: 9 Minutes

DOWNTOWN SARATOGA: 7 Minutes

1340 S. DE ANZA BOULEVARD

Contact

TENNY TSAI
+1 408 436 3671
tenny.tsai@cushwake.com
LIC #00966186

CLARK STEELE
+1 408 436 3653
clark.steele@cushwake.com
LIC #01995379

