



CUPERTINO CORPORATE CENTER

1601 S. DE ANZA BOULEVARD, CUPERTINO | ±1,364 - ±6,682 SF

DAN HOLLINGSWORTH | +1 408 615 3431 | LIC. 01117716

STEVE PACE | +1 408 482 7037 | LIC. 00817396

TIANA DAMPIER | +1 408 436 3680 | LIC. 02191012



©2023 Cushman & Wakefield. All rights reserved. The information contained in this communication is strictly confidential. This information has been obtained from sources believed to be reliable but has not been verified. NO WARRANTY OR REPRESENTATION, EXPRESS OR IMPLIED, IS MADE AS TO THE CONDITION OF THE PROPERTY (OR PROPERTIES) REFERENCED HEREIN OR AS TO THE ACCURACY OR COMPLETENESS OF THE INFORMATION CONTAINED HEREIN, AND SAME IS SUBMITTED SUBJECT TO ERRORS, OMISSIONS, CHANGE OF PRICE, RENTAL OR OTHER CONDITIONS, WITHDRAWAL WITHOUT NOTICE, AND TO ANY SPECIAL LISTING CONDITIONS IMPOSED BY THE PROPERTY OWNER(S). ANY PROJECTIONS, OPINIONS OR ESTIMATES ARE SUBJECT TO UNCERTAINTY AND DO NOT SIGNIFY CURRENT OR FUTURE PROPERTY PERFORMANCE.

CUPERTINO CORPORATE CENTER

1601 S. DE ANZA BOULEVARD, CUPERTINO

PROPERTY HIGHLIGHTS

- Two-Story Multi-Tenant Office Building
- Easy Access to Highways 280 & 85
- 9' - 10' Ceiling Height
- High Image Location
- Extensive Window Line
- Special Exterior Building Signage
- Numerous Amenities Nearby
- Outdoor Park-Like Collaboration/Seating Area
- 3.3/1,000+ Parking

FIRST FLOOR HIGHLIGHTS

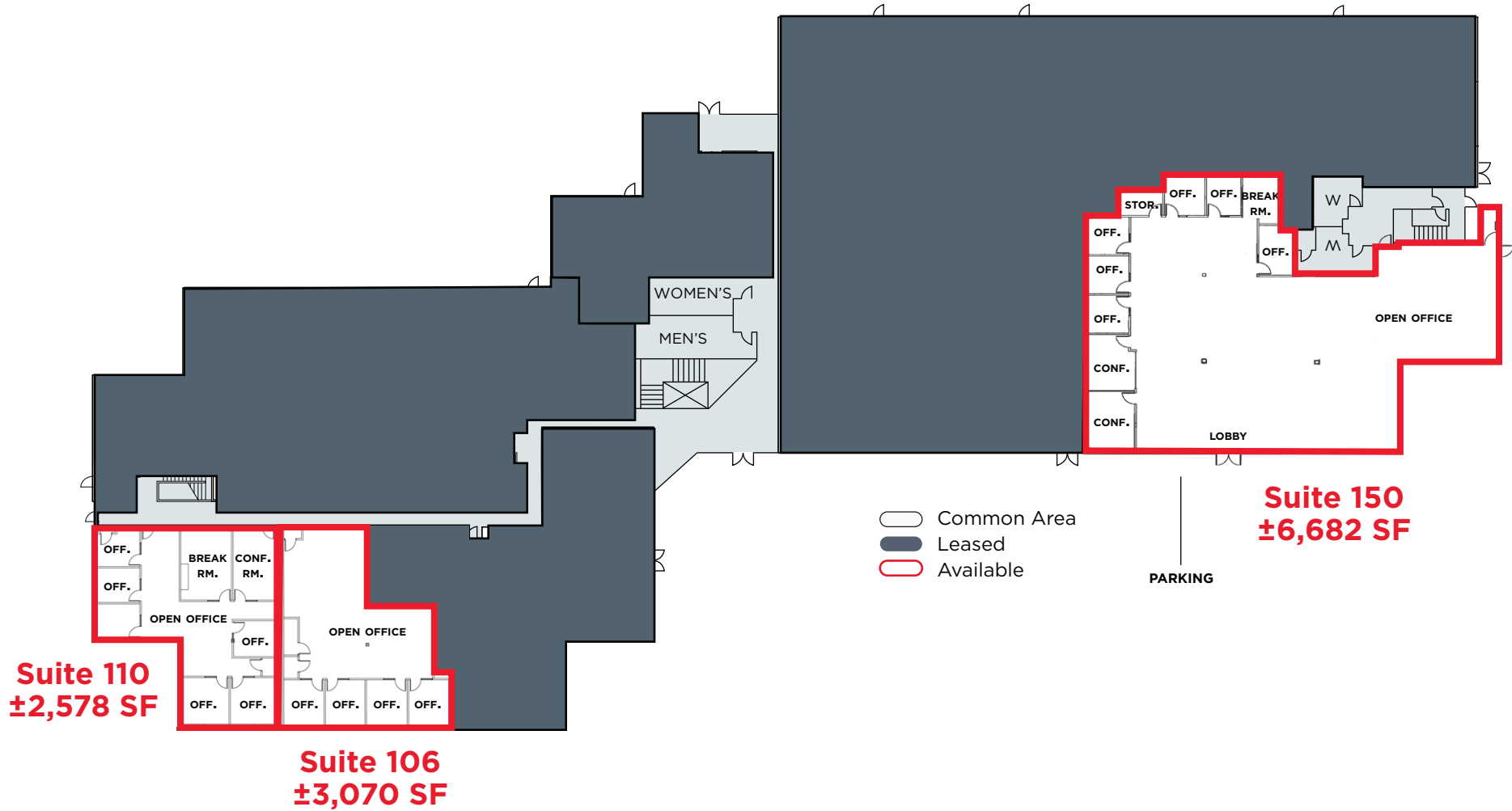
- Private Entrance
- Exclusive Building Signage
- New Market Ready Improvements
- Open Office Concept
- Privates, Break Room & Conference Rooms
- Corner Unit with Great Window Line
- Monument Signage on S. De Anza Boulevard



CUPERTINO CORPORATE CENTER

1601 S. DE ANZA BOULEVARD, CUPERTINO

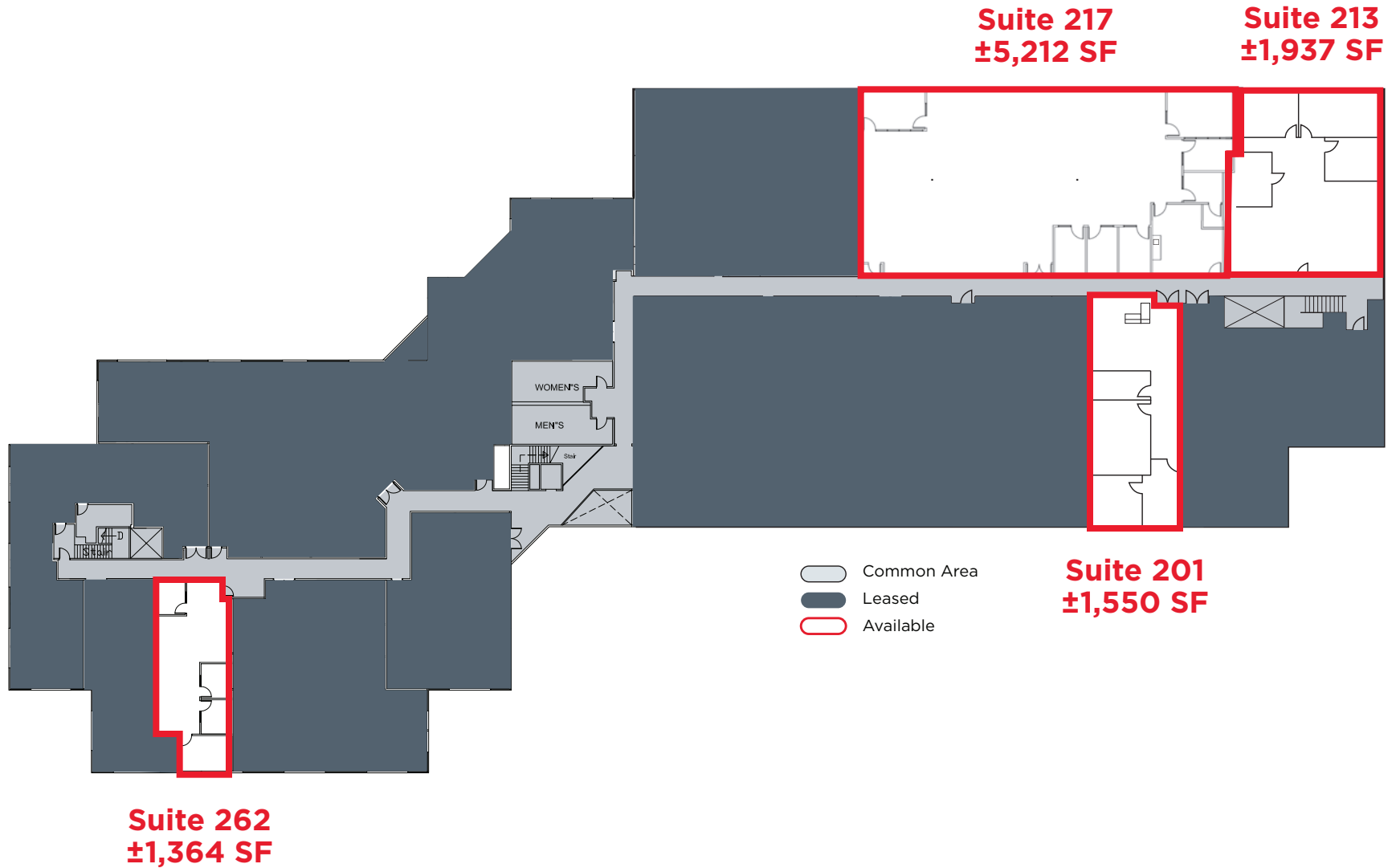
FLOOR PLAN - FIRST FLOOR



CUPERTINO CORPORATE CENTER

1601 S. DE ANZA BOULEVARD, CUPERTINO

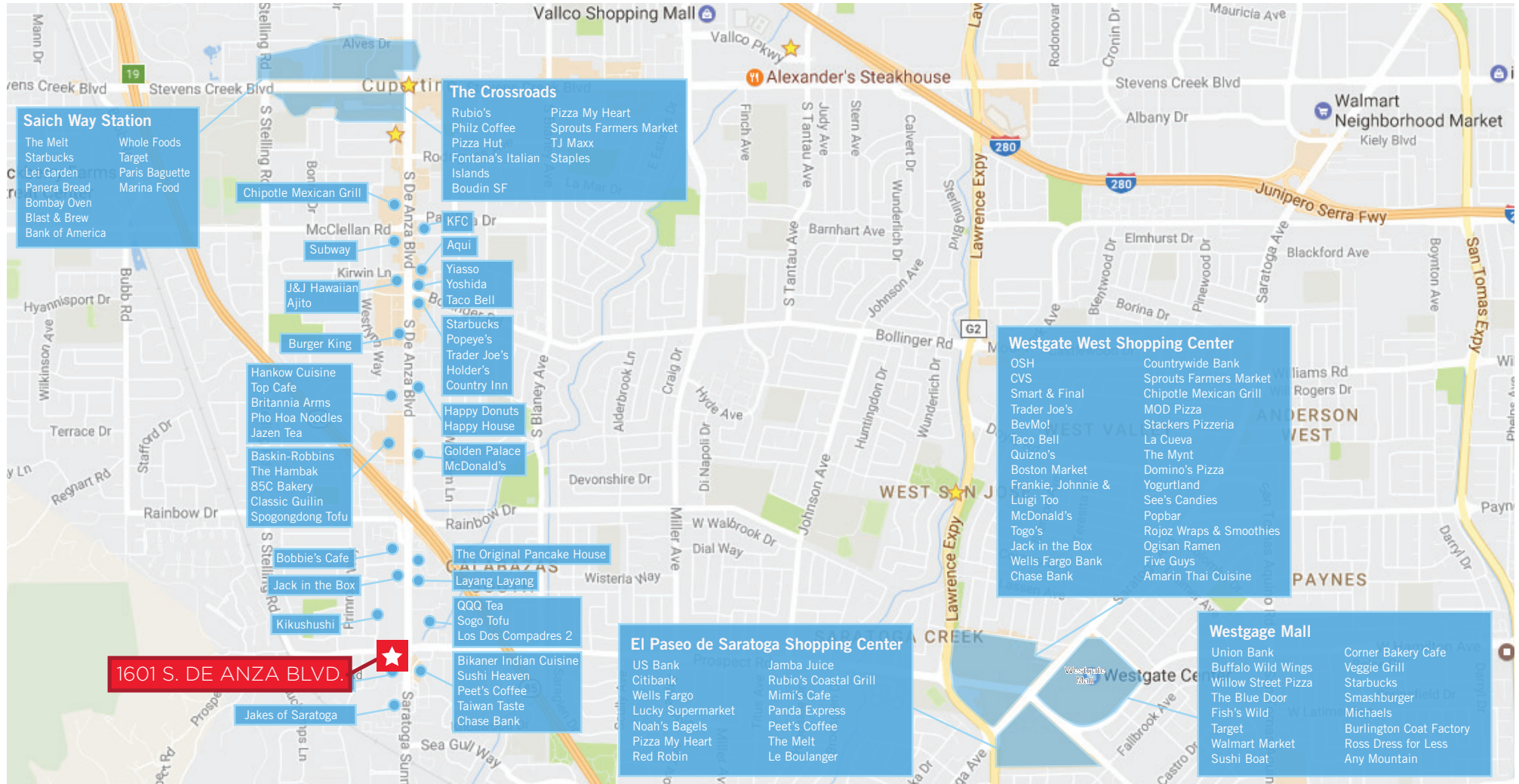
FLOOR PLAN - SECOND FLOOR



CUPERTINO CORPORATE CENTER

1601 S. DE ANZA BOULEVARD, CUPERTINO

AREA AMENITIES



DAN HOLLINGSWORTH | +1 408 615 3431 | LIC. 01117716

STEVE PACE | +1 408 482 7037 | LIC. 00817396

TIANA DAMPIER | +1 408 436 3680 | LIC. 02191012

