

1633 BAYSHORE

BURLINGAME, CA

WWW.1633BAYSHORE.COM

OFFICE SUITES AVAILABLE NOW

±414 - 1,767 RSF

Gary Boitano
Managing Director
+1 650 401 2122
gary.boitano@cushwake.com
LIC #01902693

Chris Blom
Director
+1 650 931 2210
chris.blom@cushwake.com
LIC #02031205



1633 BAYSHORE

BURLINGAME, CA

DOWNTOWN
BURLINGAME

PROPERTY HIGHLIGHTS

- Recently Renovated Lobbies
- New Elevator Cabs
- On-Site Fitness Center with Showers and Lockers
- Community Kitchen and Mail Room
- On Site Property Management
- Immediate Access to Highway 101
- Walking Distance to Hotels
- 2 Miles from SFO
- Centrally Located to San Francisco, East Bay, Peninsula, and Silicon Valley
- Minutes to Millbrae CalTrain/Bart Station and Downtown Burlingame
- Close Distance to Restaurants and Amenities
- Direct Access to Waterfront Jogging Trails
- Ample Parking

Gary Boitano
Managing Director
+1 650 401 2122
gary.boitano@cushwake.com
LIC #01902693

Chris Blom
Director
+1 650 931 2210
chris.blom@cushwake.com
LIC #02031205



1633 BAYSHORE

BURLINGAME, CA

SUITE #	SF	NOTES
SUITE 380	±414 SF	1 Private Office, Open Area
SUITE 338	±760 SF	2 Private Offices, Open Area
SUITE 333*	±800 SF	3 Private Offices, Open Space, Shared Balcony
SUITE 328	±840 SF	2 Private Offices
SUITE 335*	±880 SF	3 Privates, Open Office Space, Shared Balcony Access
SUITE 337*	±887 SF	Open Office Space, Conference Room 
SUITE 323	±1,100 SF	4 Private Offices, Open Office Space 
SUITE 327	±1,155 SF	2 Private Offices <i>Available With 60 Days' Notice</i>
SUITE 365	±1,262 SF	3 Private Offices, Conference Room, Reception Area 
SUITE 258	±1,459 SF	3 Private Offices, Open Area

*Suites 333, 335 and Suite 337 can be combined for 2,567 SF

Gary Boitano
 Managing Director
 +1 650 401 2122
 gary.boitano@cushwake.com
 LIC #01902693

Chris Blom
 Director
 +1 650 931 2210
 chris.blom@cushwake.com
 LIC #02031205



1633 BAYSHORE

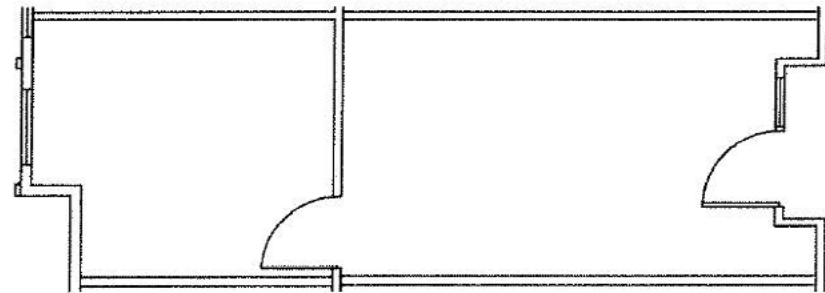
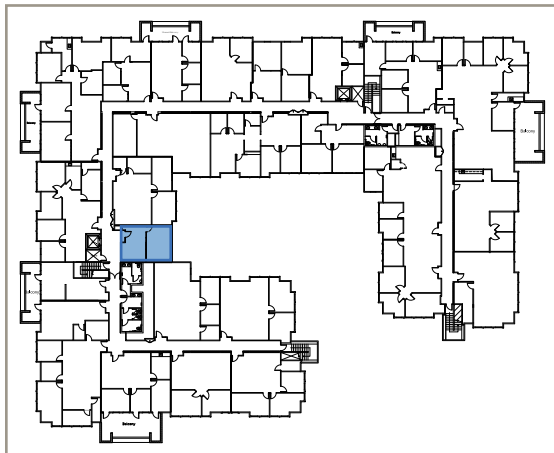
BURLINGAME, CA

AVAILABLE SUITES

SUITE 380

±414 SF

- 1 Private Office
- Open Area



----- BAYSHORE HWY -----

Gary Boitano
Managing Director
+1 650 401 2122
gary.boitano@cushwake.com
LIC #01902693

Chris Blom
Director
+1 650 931 2210
chris.blom@cushwake.com
LIC #02031205

1633 BAYSHORE

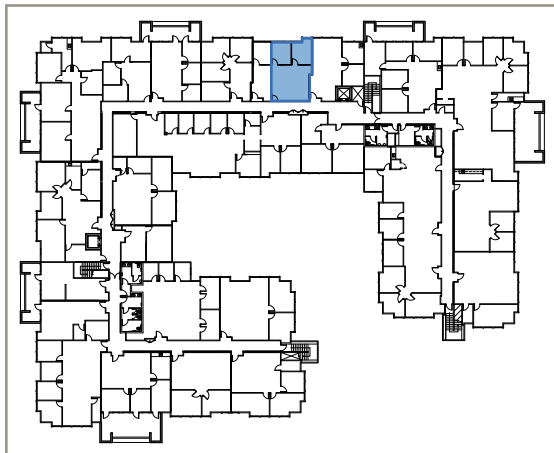
BURLINGAME, CA

AVAILABLE SUITES

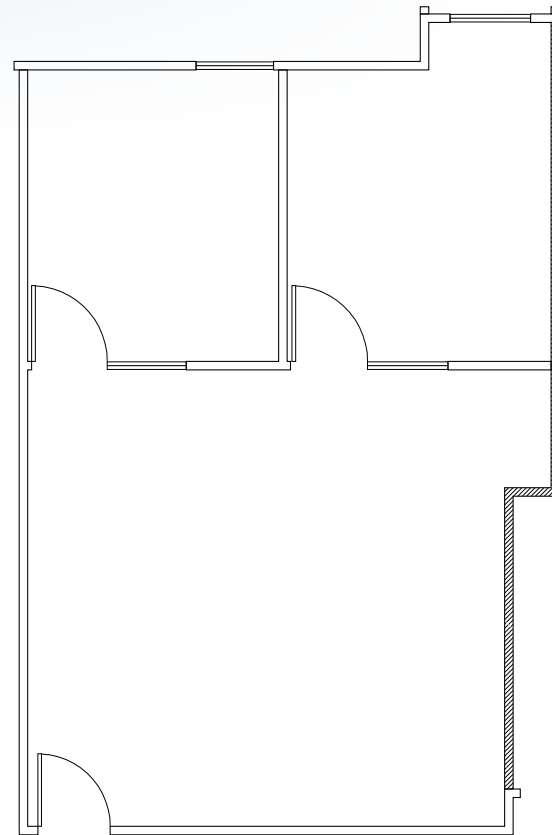
SUITE 338

±760 SF

- 2 Private Offices
- Open Area



----- BAYSHORE HWY -----



Gary Boitano
Managing Director
+1 650 401 2122
gary.boitano@cushwake.com
LIC #01902693

Chris Blom
Director
+1 650 931 2210
chris.blom@cushwake.com
LIC #02031205

1633 BAYSHORE

BURLINGAME, CA

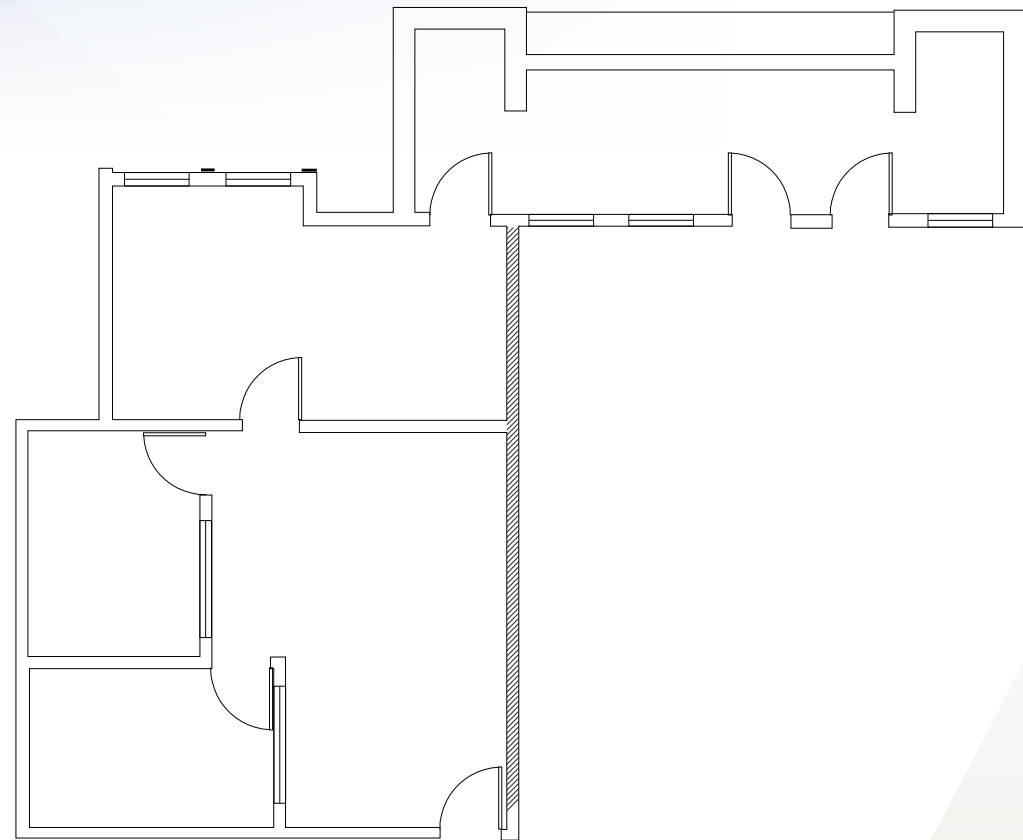
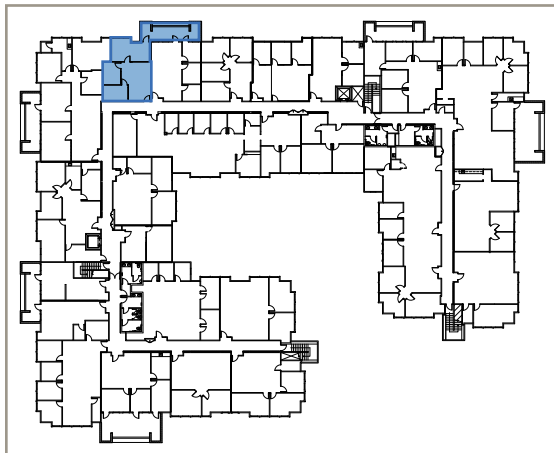
AVAILABLE SUITES

SUITE 333

±800 SF

- 3 Private Offices
- Open Area
- Shared Balcony

**Suites 333, 335 and Suite 337 can be combined for 2,567 SF*



----- BAYSHORE HWY -----

Gary Boitano
Managing Director
+1 650 401 2122
gary.boitano@cushwake.com
LIC #01902693

Chris Blom
Director
+1 650 931 2210
chris.blom@cushwake.com
LIC #02031205



1633 BAYSHORE

BURLINGAME, CA

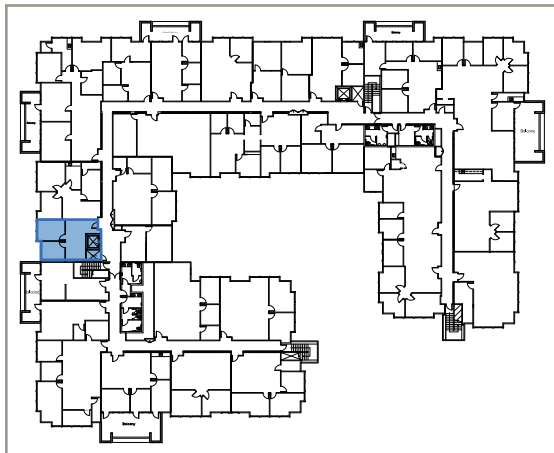
AVAILABLE SUITES

SUITE 328

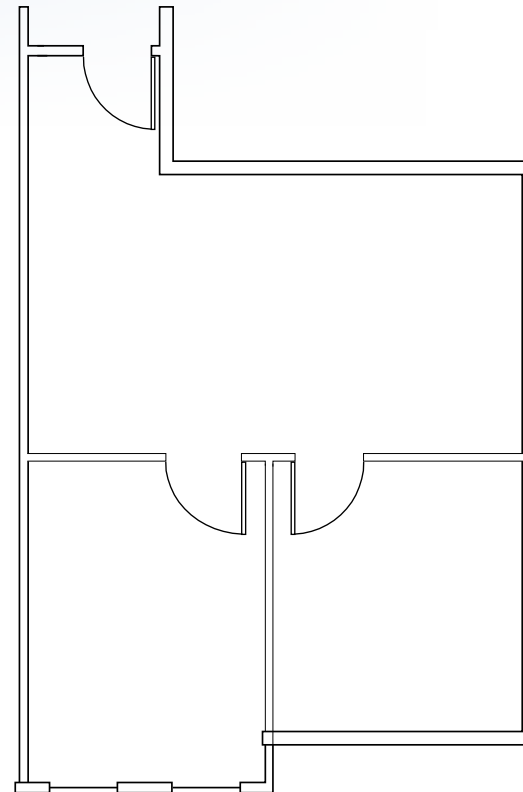
±840 SF

- 2 Private Offices
- Available Now

**Suites 333, 335 and Suite 337 can be combined for 2,567 SF*



----- BAYSHORE HWY -----



Gary Boitano
Managing Director
+1 650 401 2122
gary.boitano@cushwake.com
LIC #01902693

Chris Blom
Director
+1 650 931 2210
chris.blom@cushwake.com
LIC #02031205

1633 BAYSHORE

BURLINGAME, CA

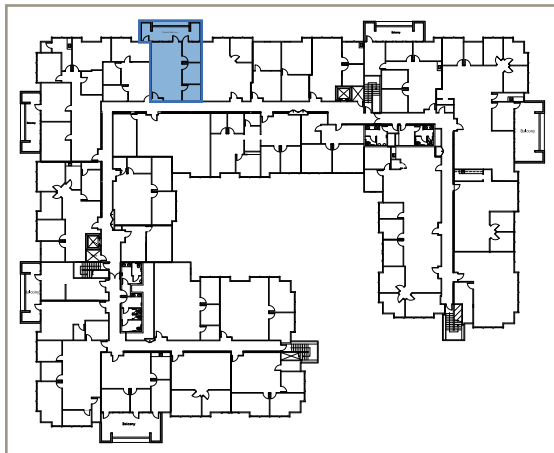
AVAILABLE SUITES

SUITE 335

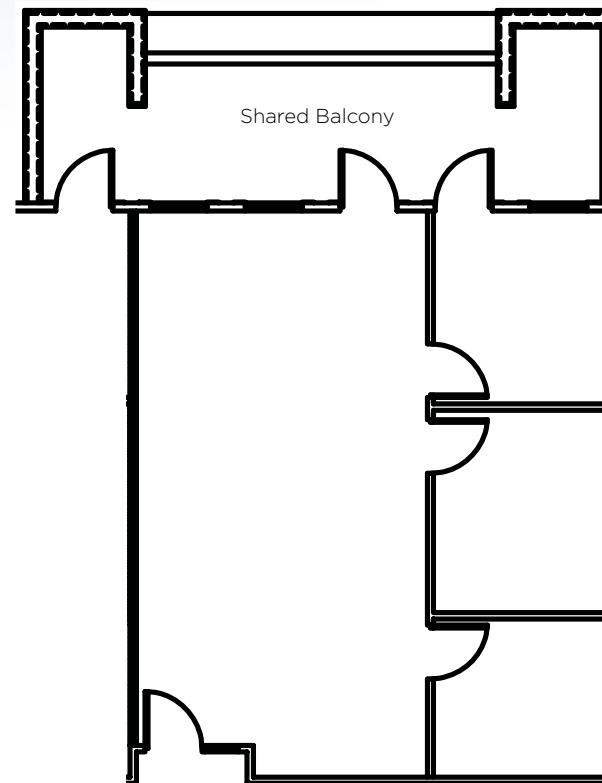
±880 SF

- 3 Privates
- Open Office Space
- Shared Balcony Access

**Suites 333, 335 and Suite 337 can be combined for 2,567 SF*



----- BAYSHORE HWY -----



Gary Boitano
Managing Director
+1 650 401 2122
gary.boitano@cushwake.com
LIC #01902693

Chris Blom
Director
+1 650 931 2210
chris.blom@cushwake.com
LIC #02031205

1633 BAYSHORE

BURLINGAME, CA

AVAILABLE SUITES

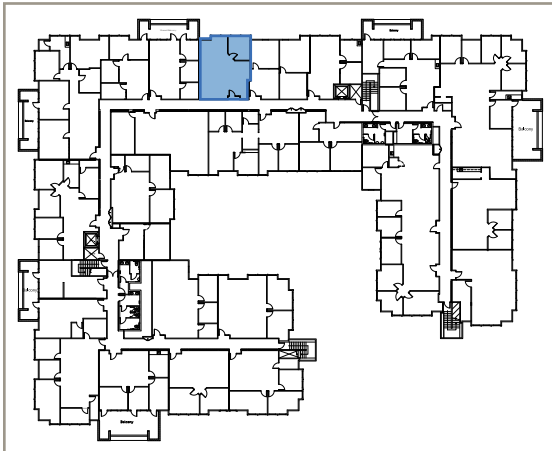
SUITE 337

±887 SF

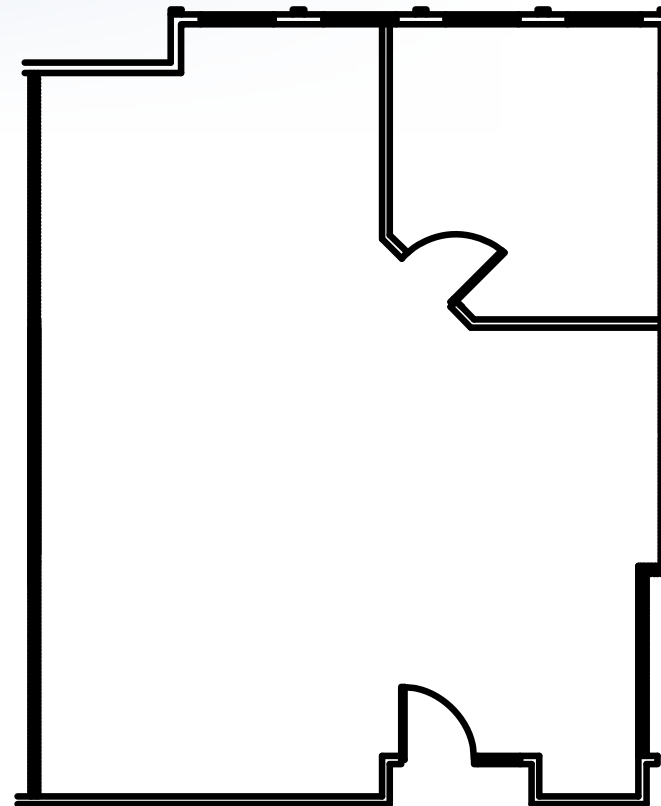
- Open Office Space
- Conference Room

 VIRTUAL TOUR

**Suites 335, and Suite 337 can be combined for 2,567 SF*



----- BAYSHORE HWY -----



Gary Boitano
Managing Director
+1 650 401 2122
gary.boitano@cushwake.com
LIC #01902693

Chris Blom
Director
+1 650 931 2210
chris.blom@cushwake.com
LIC #02031205

1633 BAYSHORE

BURLINGAME, CA

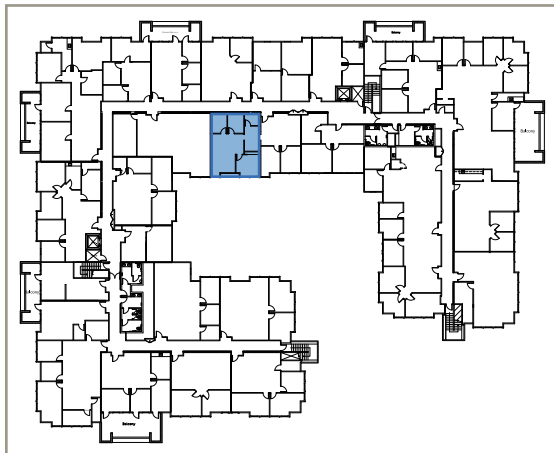
AVAILABLE SUITES

SUITE 323

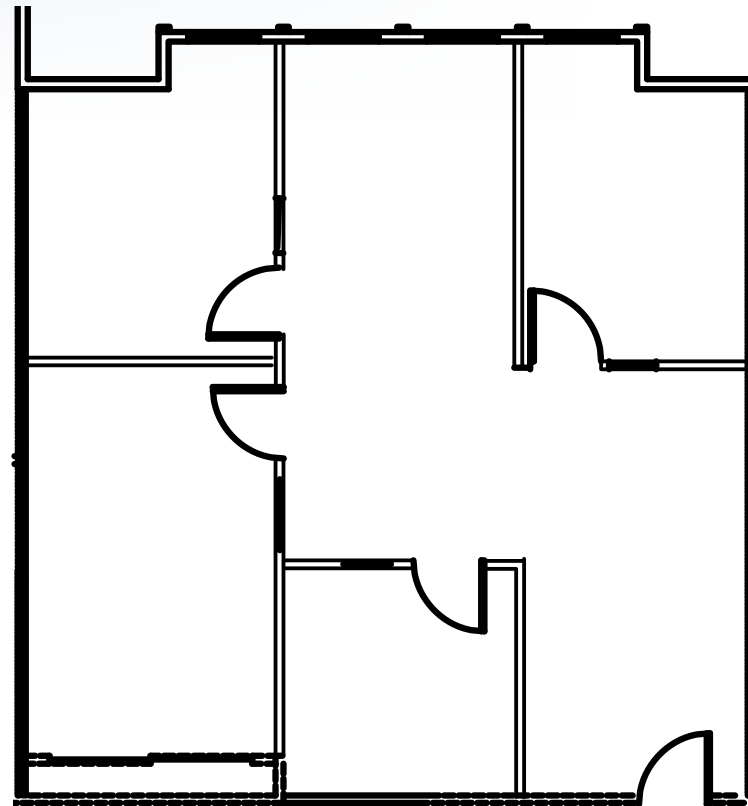
±1,100 SF

- 4 Private Offices
- Open Office Space

360° VIRTUAL TOUR



----- BAYSHORE HWY -----



Gary Boitano
Managing Director
+1 650 401 2122
gary.boitano@cushwake.com
LIC #01902693

Chris Blom
Director
+1 650 931 2210
chris.blom@cushwake.com
LIC #02031205

1633 BAYSHORE

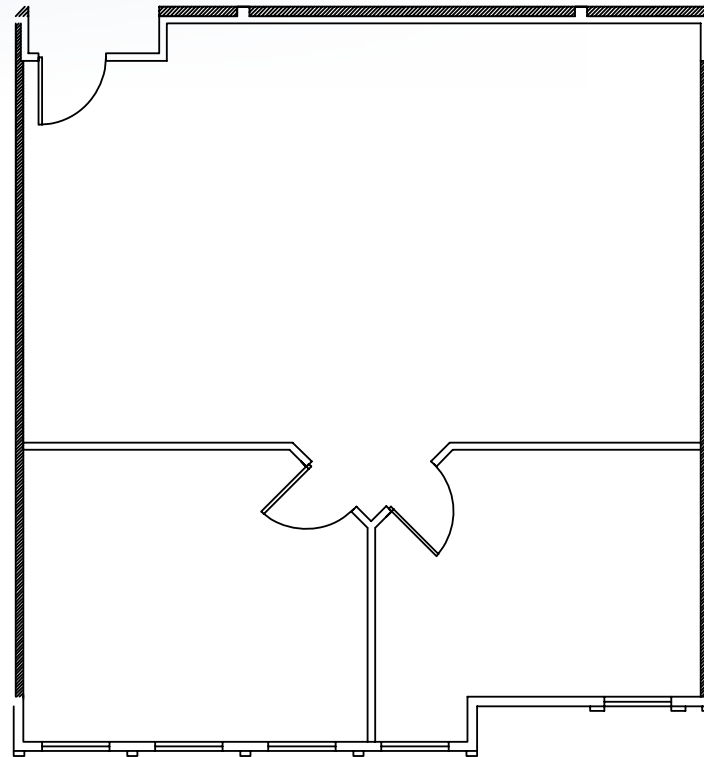
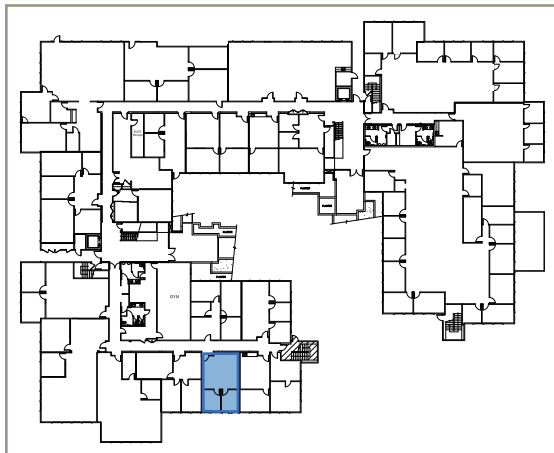
BURLINGAME, CA

AVAILABLE SUITES

SUITE 327

±1,155 SF

- 2 Private Offices
- Available With 60 Days' Notice



----- BAYSHORE HWY -----

Gary Boitano
Managing Director
+1 650 401 2122
gary.boitano@cushwake.com
LIC #01902693

Chris Blom
Director
+1 650 931 2210
chris.blom@cushwake.com
LIC #02031205

1633 BAYSHORE

BURLINGAME, CA

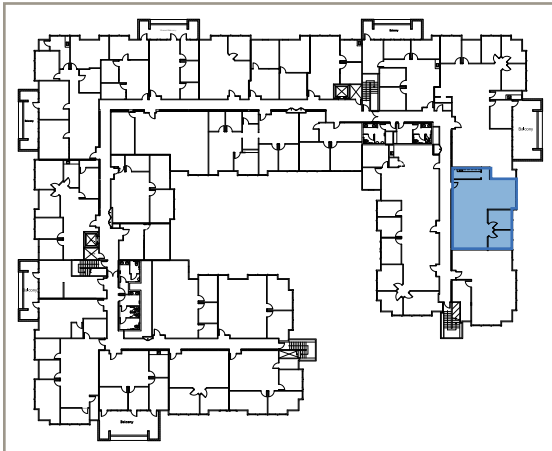
AVAILABLE SUITES

SUITE 365

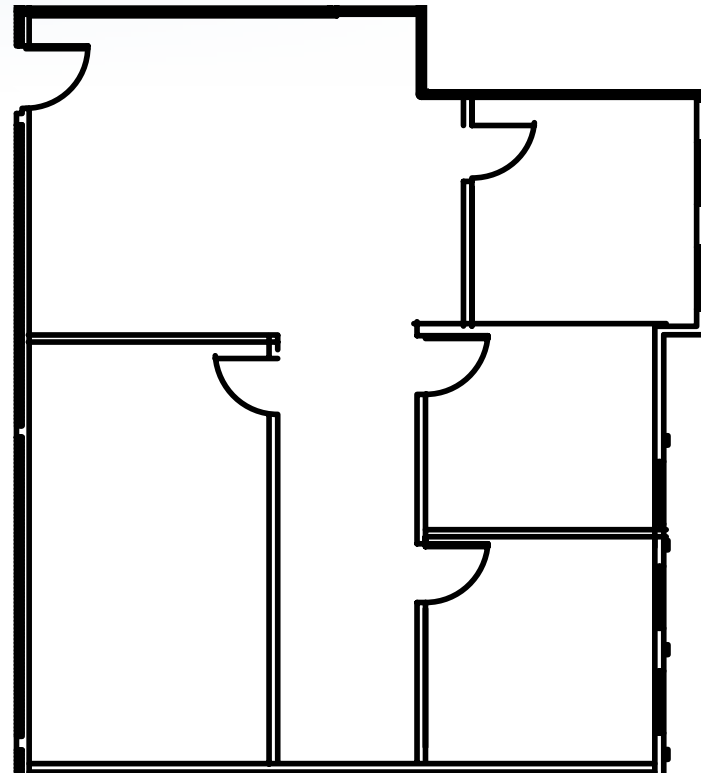
±1,262 SF

- 3 Private Offices
- 1 Conference Room
- Reception Area

360° VIRTUAL TOUR



----- BAYSHORE HWY -----



Gary Boitano
Managing Director
+1 650 401 2122
gary.boitano@cushwake.com
LIC #01902693

Chris Blom
Director
+1 650 931 2210
chris.blom@cushwake.com
LIC #02031205

1633 BAYSHORE

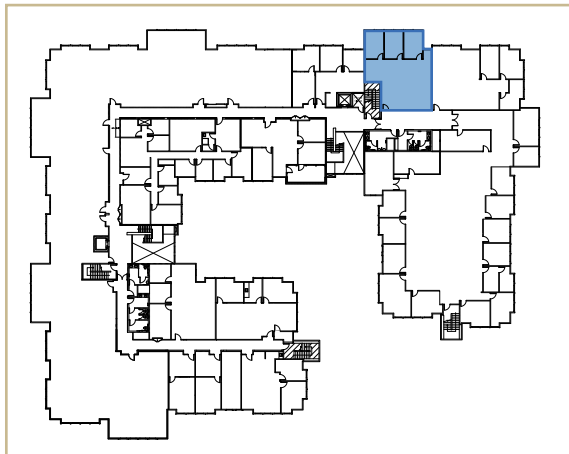
BURLINGAME, CA

AVAILABLE SUITES

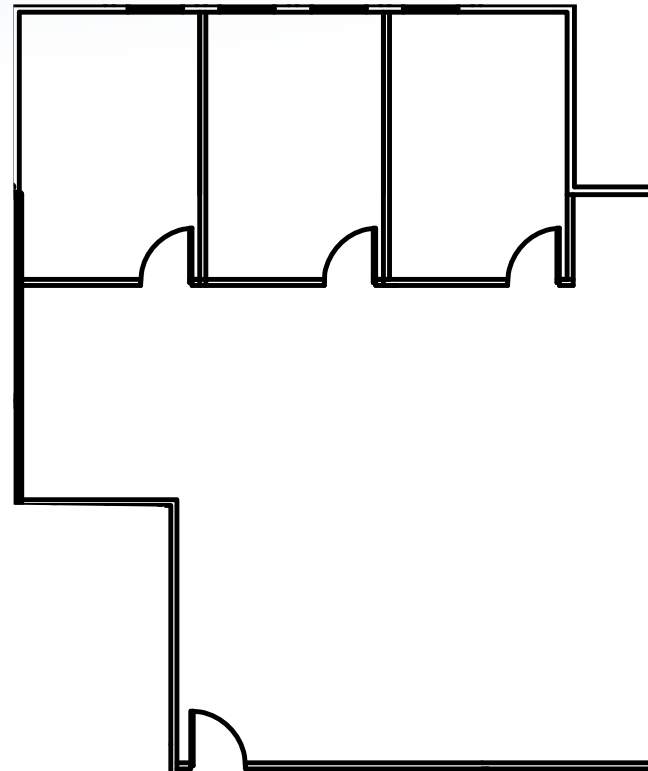
SUITE 258

±1,459 RSF

- 3 Private Offices
- Open Office



----- BAYSHORE HWY -----



Gary Boitano
Managing Director
+1 650 401 2122
gary.boitano@cushwake.com
LIC #01902693

Chris Blom
Director
+1 650 931 2210
chris.blom@cushwake.com
LIC #02031205

1633 BAYSHORE

BURLINGAME, CA

TRANSPORTATION

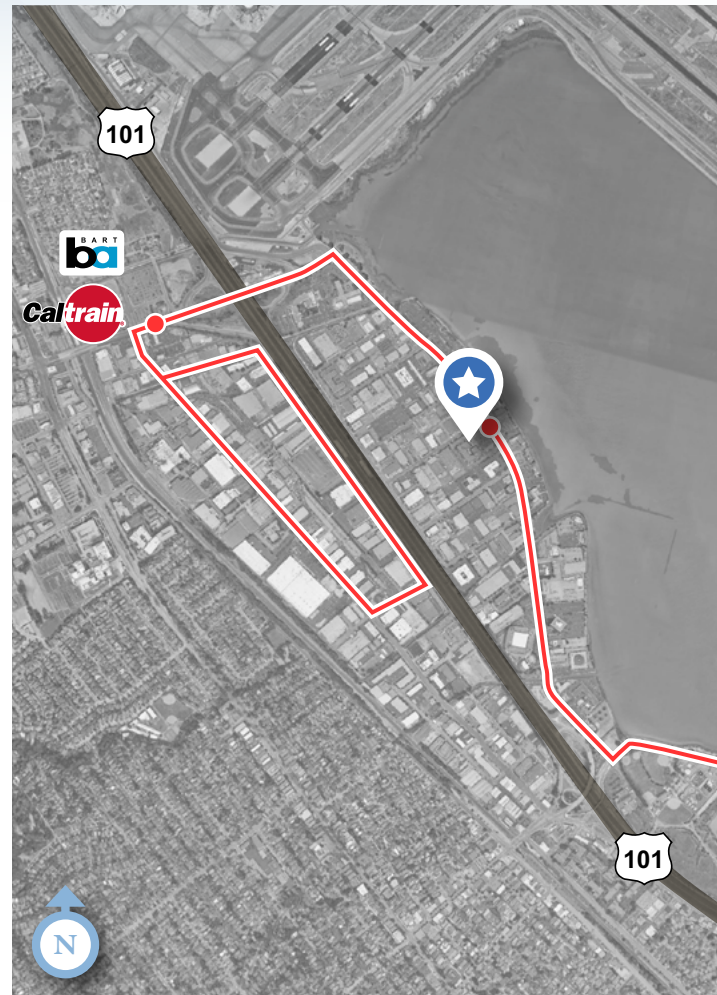
CALTRAIN/BART SHUTTLE A.M.

Millbrae Station Pick-Up	1633 Old Bayshore Drop-Off
6:57 AM	7:10 AM
7:27 AM	7:40 AM
7:42 AM	7:55 AM
8:09 AM	8:22 AM
8:27 AM	8:40 AM
8:42 AM	8:55 AM
8:59 AM	9:12 AM
9:14 AM	9:27 AM

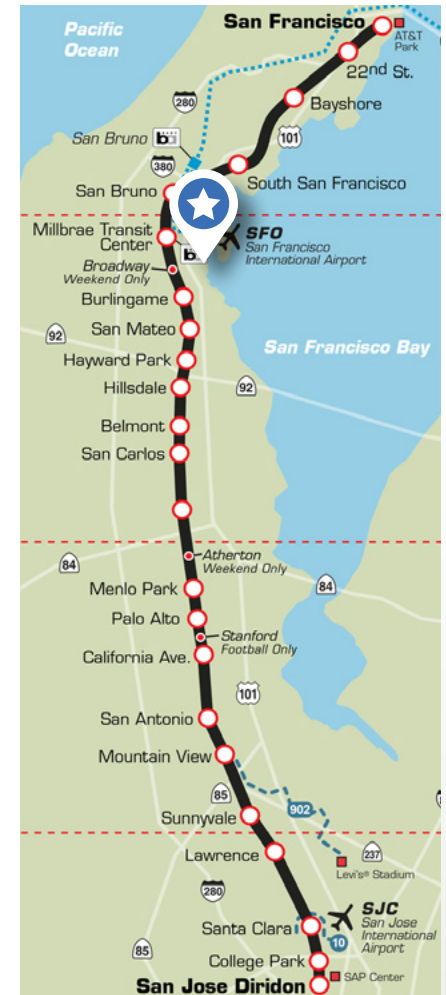
CALTRAIN/BART SHUTTLE P.M.

1633 Old Bayshore Pick-Up	Millbrae Station Drop-Off
4:05 PM	4:19 PM
4:25 PM	4:39 PM
4:37 PM	4:51 PM
5:00 PM	5:14 PM
5:24 PM	5:38 PM
5:38 PM	5:52 PM
6:09 PM	6:23 PM
6:26 PM	6:40 PM
6:41 PM	6:55 PM

SHUTTLE ROUTE



CALTRAIN ROUTE



Gary Boitano
 Managing Director
 +1 650 401 2122
 gary.boitano@cushwake.com
 LIC #01902693

Chris Blom
 Director
 +1 650 931 2210
 chris.blom@cushwake.com
 LIC #02031205

1633 BAYSHORE

BURLINGAME, CA

AMENITIES



1	New England Lobster Market	11	I Love Sushi
2	King of Thai Noodle House	12	Max's Restaurant
3	Joe's Cafe by the Bay	13	Kincaid's Restaurant
4	Taylor's Bay Cafe	14	Waterfront Cafe
5	Elephant Bar	15	Fire Vine Grill & Bar
6	El Torito	16	Gabriel & Daniel's Mexican
7	Mr. Teriyaki	17	Knuckles Sports Bar
8	Benihana Burlingame	18	3 Sixty
9	Grand Harbor Seafood	19	Maverick Jack's
10	Aroma Cafe		

1633 BAYSHORE

BURLINGAME, CA

PHOTOS



Gary Boitano
Managing Director
+1 650 401 2122
gary.boitano@cushwake.com
LIC #01902693

Chris Blom
Director
+1 650 931 2210
chris.blom@cushwake.com
LIC #02031205

1633 BAYSHORE

BURLINGAME, CA

WWW.1633BAYSHORE.COM