



FOR LEASE

411 BOREL^{AVE}

San Mateo, California

WWW.411BORELSANMATEO.COM

View Site Specific
COVID-19 Prevention Plan

HOME

HIGHLIGHTS

AVAILABLE

AMENITIES

LOCATION

For more information, please contact:

Pat Yaeger
Senior Director
+1 650 401 2133
pat.yaeger@cushwake.com
LIC #01452294

Gary Boitano
Managing Director
+1 650 401 2122
gary.boitano@cushwake.com
LIC #01902693

ELLIS PARTNERS



Property Highlights

- 6-Story Class A Office Building in San Mateo
- ±140,865 SF of Total Office Space
- Steel Framed Building Designed by Art Gensler
- Expansive Window Lines
- Abundant Natural Light
- Panoramic Views of the San Francisco Bay and San Mateo Foothills
- Functional and Flexible Floor Plates
- Ample Parking Lot



For more information, please contact:

Pat Yaeger
Senior Director
+1 650 401 2133
pat.yaeger@cushwake.com
LIC #01452294

Gary Boitano
Managing Director
+1 650 401 2122
gary.boitano@cushwake.com
LIC #01902693

ELLIS PARTNERS



Space Available

Click Suite to View Floorplan

Suite Number	SF	Notes
100	±19,528 SF	18,116 SF Office: 14 Private Offices/Break Out Rooms, 1 Large Assembly/Storage Room, 2 Conference Rooms, Large Open Break Room/All Hands Area, Open Office, Private Restrooms 1,412 SF Loading Dock Space: Two Dock Doors with Levelers, Storage Area, Staging Shipping Receiving Areas
200	±2,699 SF	4 Small Privates, 2 Large Privates, Kitchen, Open Office
205	±5,285 SF	3 Privates, Conference Room, Kitchen/Break Area, Server/Storage Closet
235	±926 SF	2 Privates, Open Office, Available 7/1/24
330	±4,096 SF	6 Privates, 2 Conference/Breakout Rooms, Server/Storage Closet
600	±3,550 SF	Reception Area, Kitchen, Assembly room, 7 private offices, 1 conference room, Storage room
616	±3,844 SF	4 Privates, Conference Room, Break Area, Open Office Area



For more information, please contact:

Pat Yaeger
Senior Director
+1 650 401 2133
pat.yaeger@cushwake.com
LIC #01452294

Gary Boitano
Managing Director
+1 650 401 2122
gary.boitano@cushwake.com
LIC #01902693

ELLIS PARTNERS

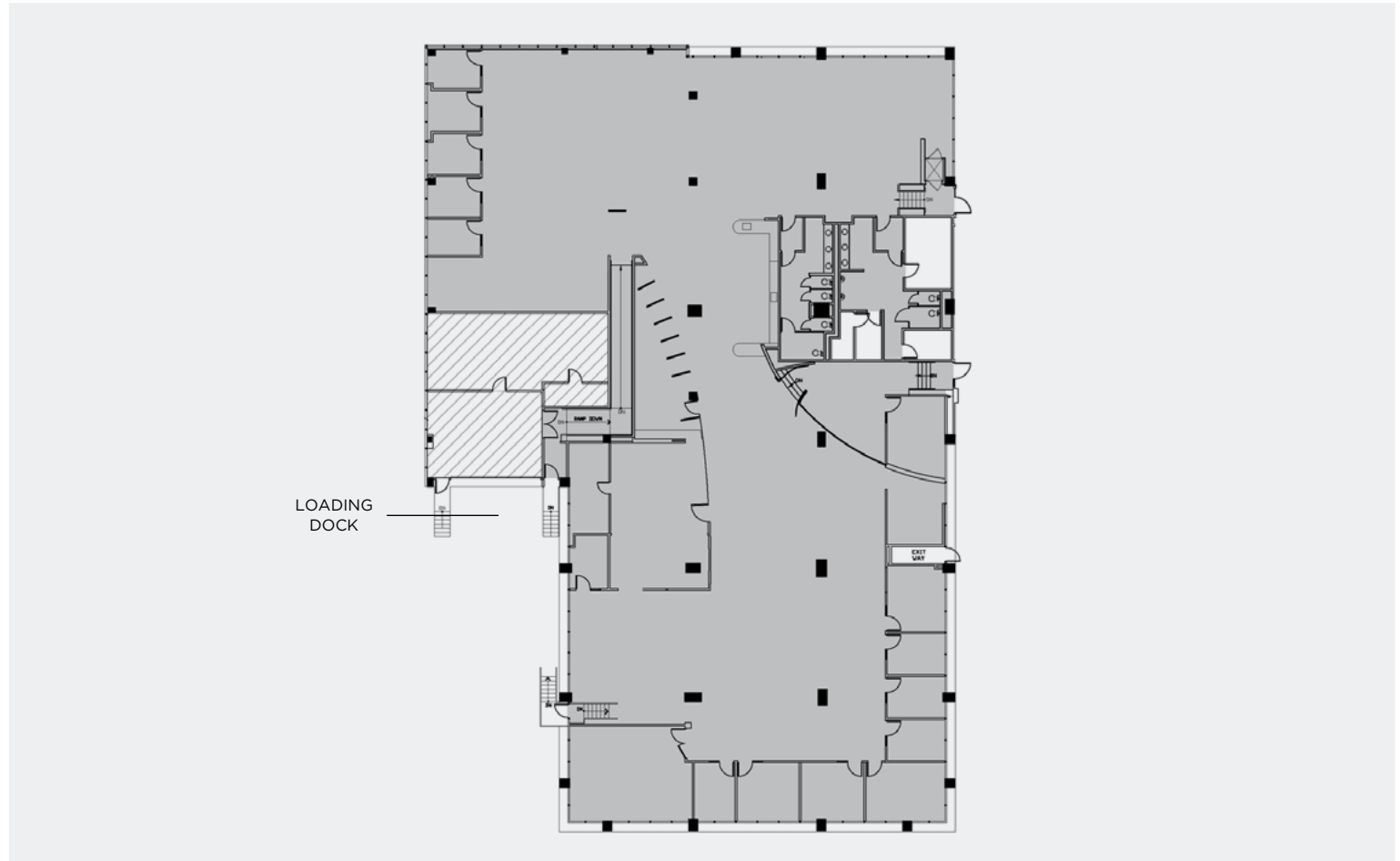
Suite 100 / ±19,528 SF

18,116 SF Office

- 14 Private Offices/
Break Out Rooms
- 1 Large Assembly/
Storage Room
- 2 Conference Rooms
- Large Open Break
Room/All Hands Area
- Open Office
- Private Restrooms

1,412 SF Loading Dock Space

- Two Dock Doors
with Levelers
- Storage Area
- Staging/Shipping
Receiving Areas



For more information, please contact:

Pat Yaeger
Senior Director
+1 650 401 2133
pat.yaeger@cushwake.com
LIC #01452294

Gary Boitano
Managing Director
+1 650 401 2122
gary.boitano@cushwake.com
LIC #01902693

ELLIS PARTNERS

HOME

HIGHLIGHTS

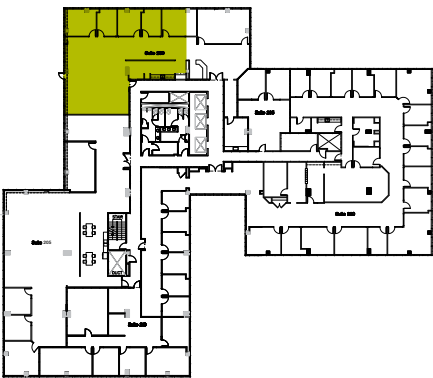
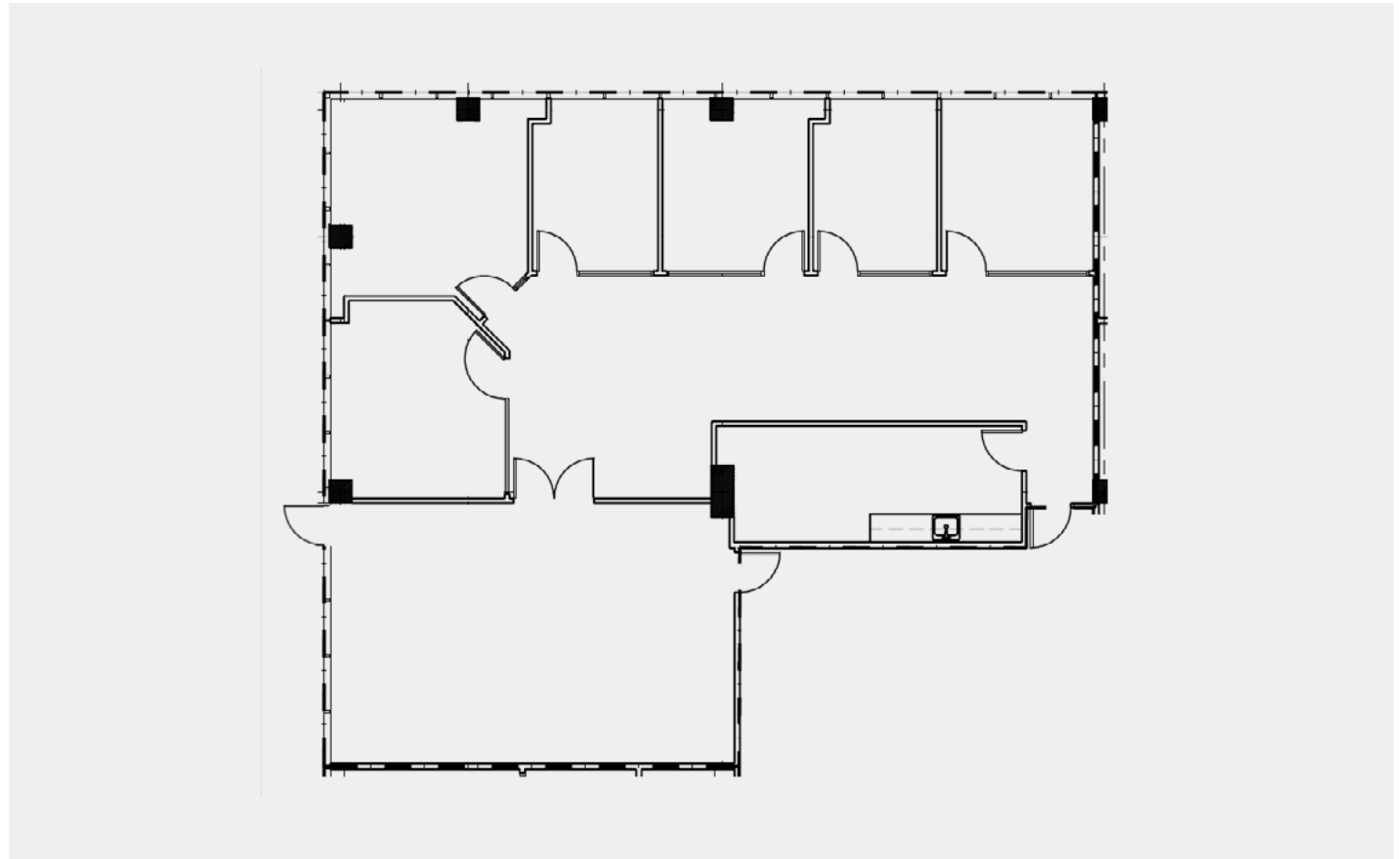
AVAILABLE

AMENITIES

LOCATION

Suite 200 / ±2,699 SF

- 4 Small Privates
- 2 Large Privates
- Kitchen
- Open Office



For more information, please contact:

Pat Yaeger
Senior Director
+1 650 401 2133
pat.yaeger@cushwake.com
LIC #01452294

Gary Boitano
Managing Director
+1 650 401 2122
gary.boitano@cushwake.com
LIC #01902693

ELLIS PARTNERS

HOME

HIGHLIGHTS

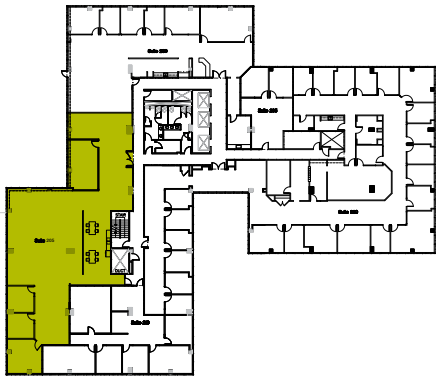
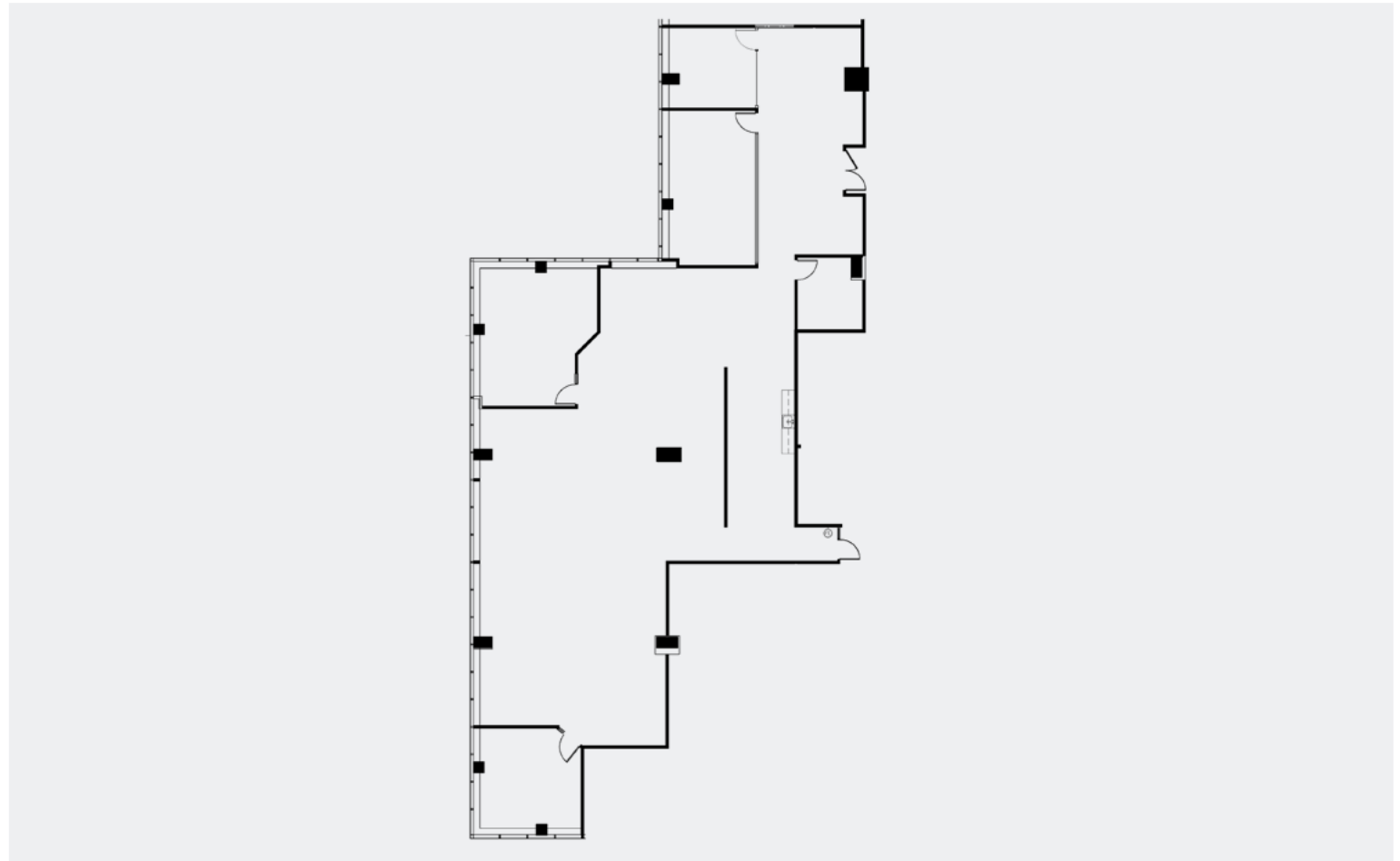
AVAILABLE

AMENITIES

LOCATION

Suite 205 / ±5,285 SF

- 3 Privates
- Conference Room
- Kitchen/Break Area,
- Server/Storage Closet



For more information, please contact:

Pat Yaeger
Senior Director
+1 650 401 2133
pat.yaeger@cushwake.com
LIC #01452294

Gary Boitano
Managing Director
+1 650 401 2122
gary.boitano@cushwake.com
LIC #01902693

ELLIS PARTNERS

HOME

HIGHLIGHTS

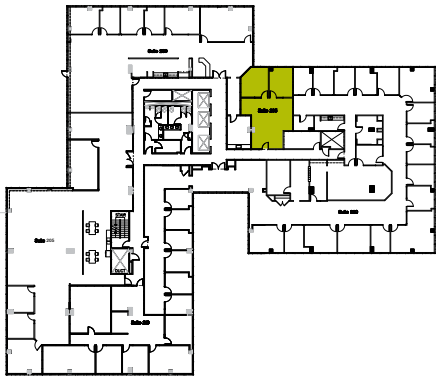
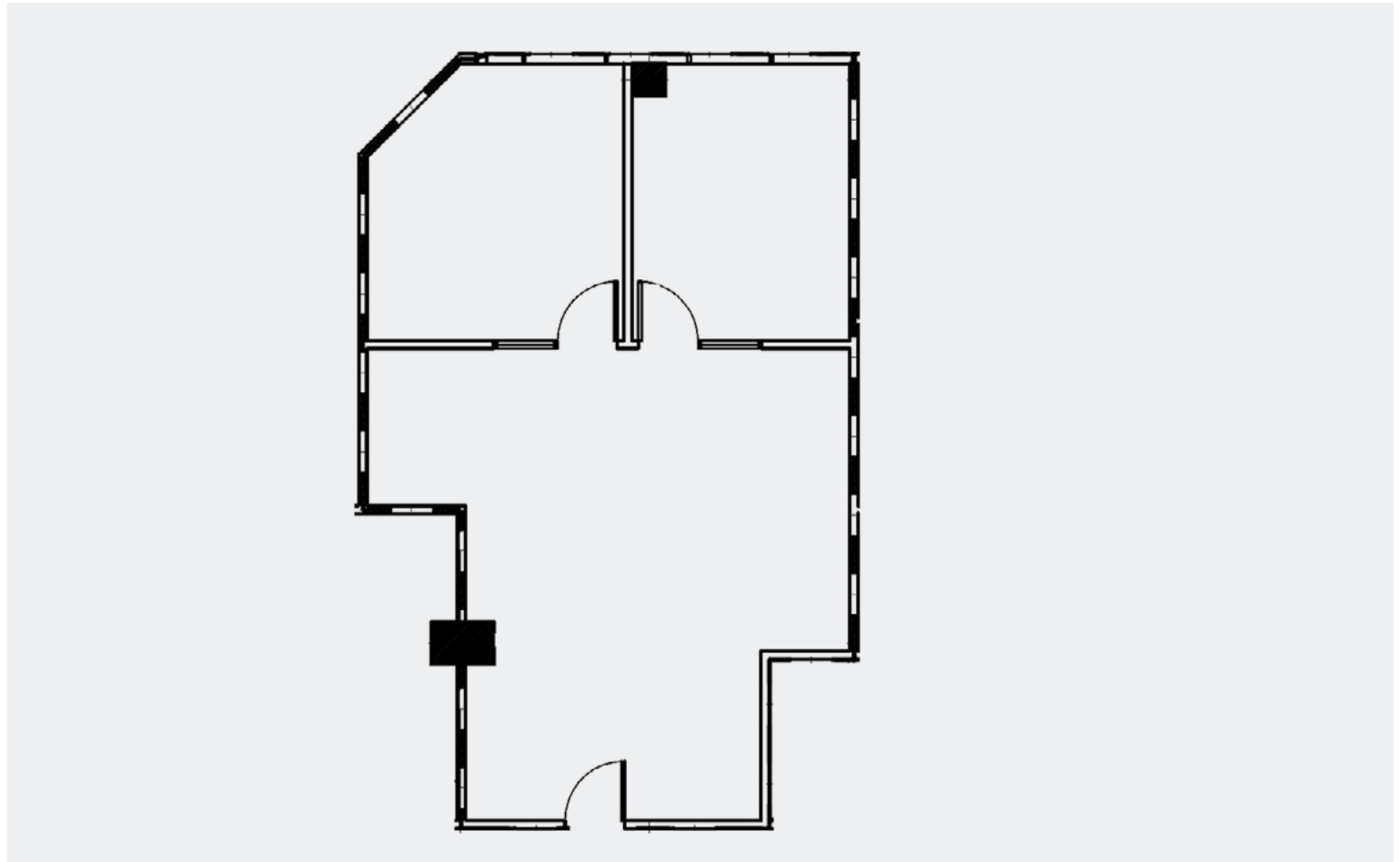
AVAILABLE

AMENITIES

LOCATION

Suite 235 / ±926 SF

- 2 Private Offices
- Open Office
- Available 7/1/24



For more information, please contact:

Pat Yaeger
Senior Director
+1 650 401 2133
pat.yaeger@cushwake.com
LIC #01452294

Gary Boitano
Managing Director
+1 650 401 2122
gary.boitano@cushwake.com
LIC #01902693

ELLIS PARTNERS

HOME

HIGHLIGHTS

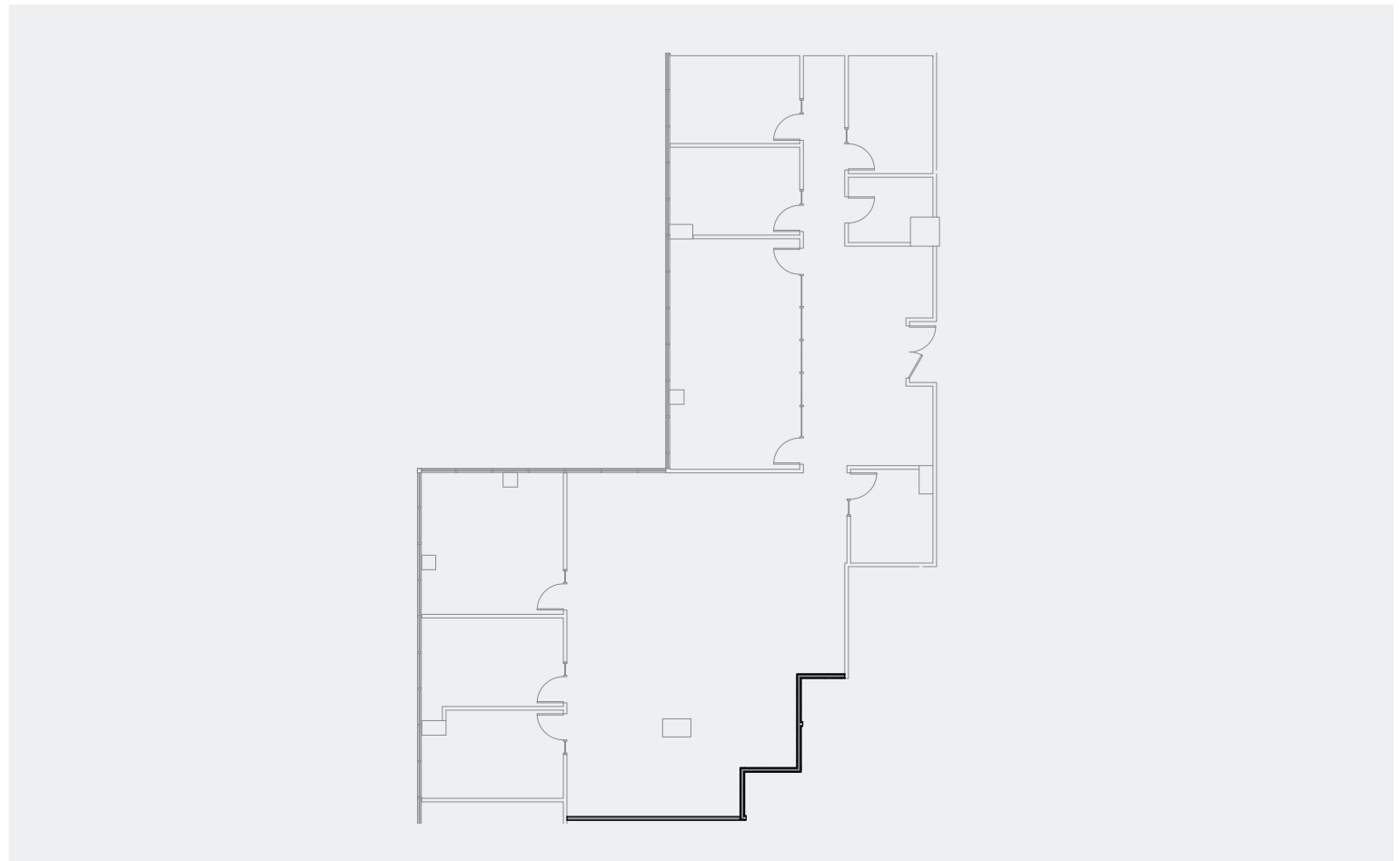
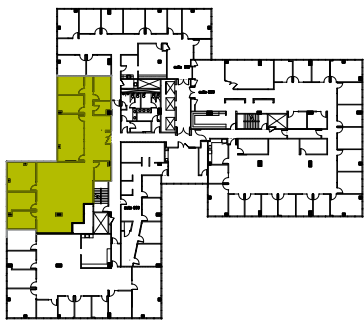
AVAILABLE

AMENITIES

LOCATION

Suite 330 / ±4,096 SF

- 6 Private Offices
- 2 Conference/
Breakout Rooms
- Server/Storage Closet



For more information, please contact:

Pat Yaeger
Senior Director
+1 650 401 2133
pat.yaeger@cushwake.com
LIC #01452294

Gary Boitano
Managing Director
+1 650 401 2122
gary.boitano@cushwake.com
LIC #01902693

ELLIS PARTNERS

HOME

HIGHLIGHTS

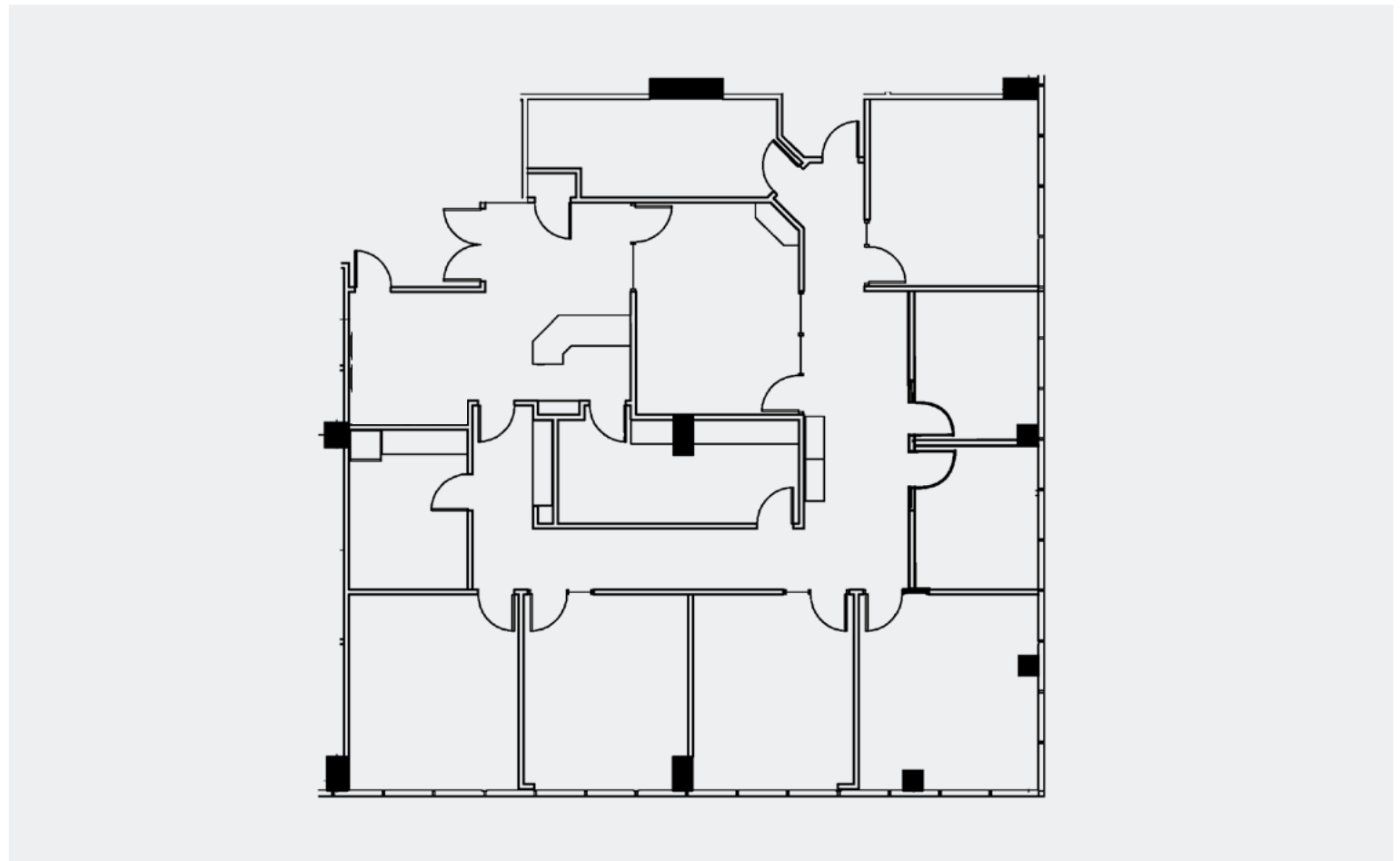
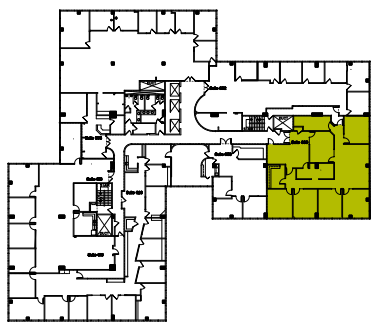
AVAILABLE

AMENITIES

LOCATION

Suite 600 / ±3,550 SF

- Reception Area
- Kitchen
- Assembly room
- 7 private offices
- 1 conference room
- Storage room



For more information, please contact:

Pat Yaeger
Senior Director
+1 650 401 2133
pat.yaeger@cushwake.com
LIC #01452294

Gary Boitano
Managing Director
+1 650 401 2122
gary.boitano@cushwake.com
LIC #01902693

ELLIS PARTNERS

HOME

HIGHLIGHTS

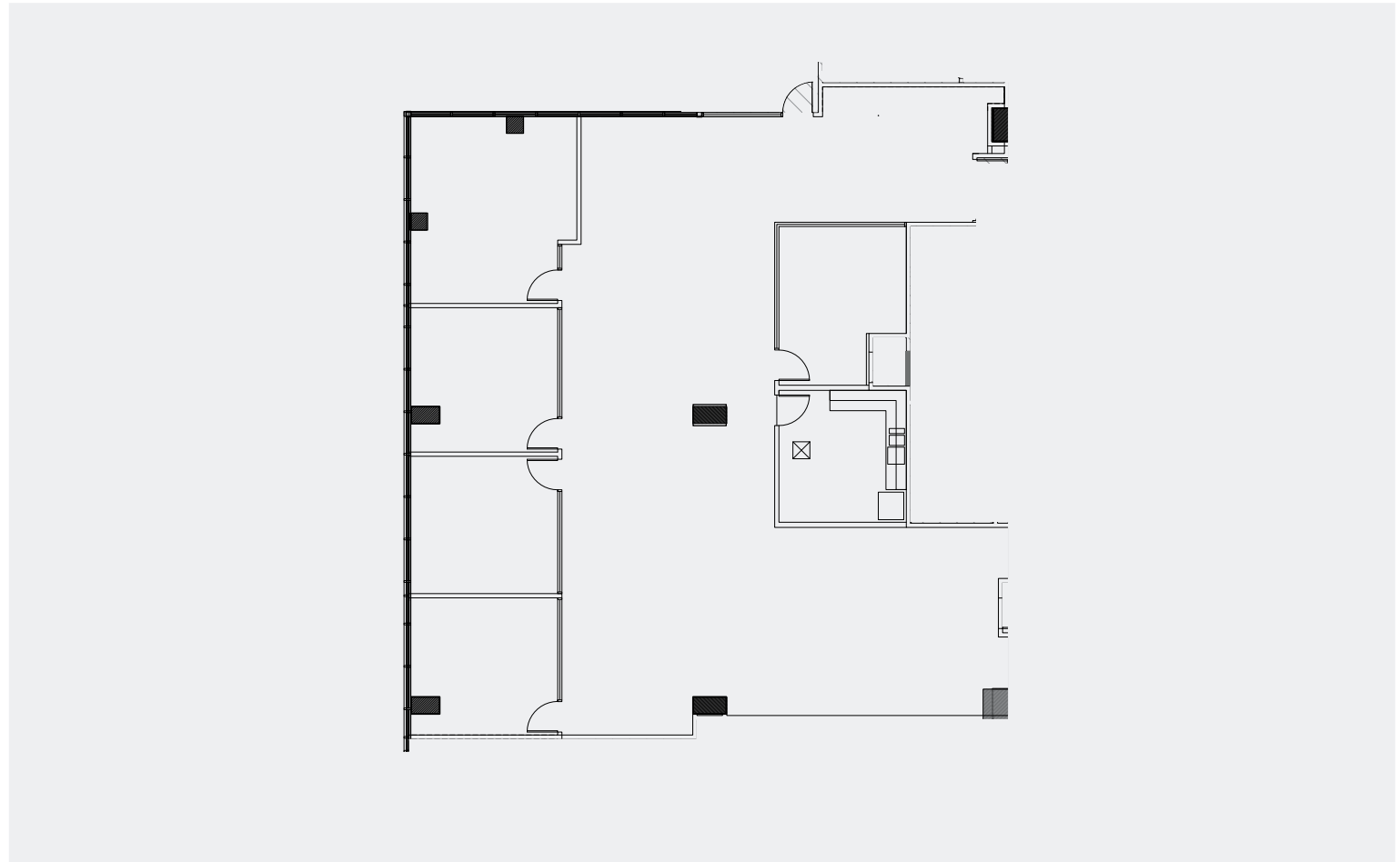
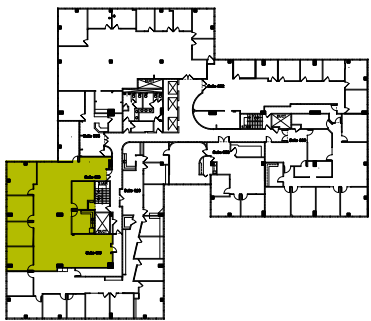
AVAILABLE

AMENITIES

LOCATION

Suite 616 / ±3,844 SF

- 4 Private Offices
- Conference Room
- Break Area
- Open Office Area



For more information, please contact:

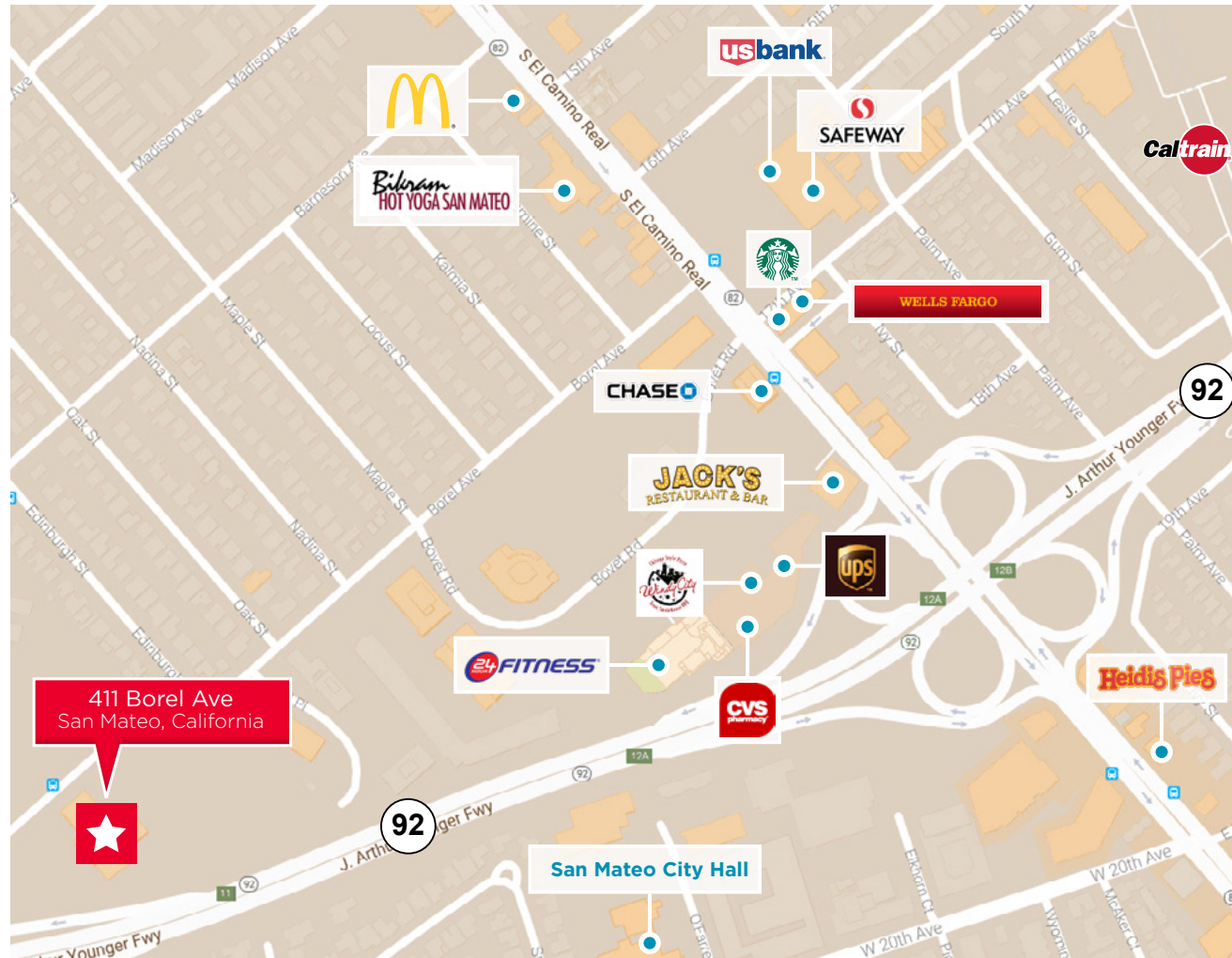
Pat Yaeger
Senior Director
+1 650 401 2133
pat.yaeger@cushwake.com
LIC #01452294

Gary Boitano
Managing Director
+1 650 401 2122
gary.boitano@cushwake.com
LIC #01902693

ELLIS PARTNERS

Amenities

- 30 minutes from downtown San Francisco.
- 20 minutes from Silicon Valley.
- Close proximity to three Caltrain Stations.
- Excellent freeway access: HWY 280, 101, 92.
- Over 50 restaurants in downtown San Mateo.
- 10 minutes from SFO International Airport.
- Close proximity to amenities such as: 24 Hour Fitness, McDonald's, Starbucks, Safeway, Wells Fargo, CVS and other restaurants.



For more information, please contact:

Pat Yaeger
Senior Director
+1 650 401 2133
pat.yaeger@cushwake.com
LIC #01452294

Gary Boitano
Managing Director
+1 650 401 2122
gary.boitano@cushwake.com
LIC #01902693

ELLIS PARTNERS

HOME

HIGHLIGHTS

AVAILABLE

AMENITIES

LOCATION

Location



For more information, please contact:

Pat Yaeger

Senior Director

+1 650 401 2133

pat.yaeger@cushwake.com

LIC #01452294

Gary Boitano

Managing Director

+1 650 401 2122

gary.boitano@cushwake.com

LIC #01902693

ELLIS PARTNERS



CUSHMAN &
WAKEFIELD