

# 950

**TOWER LANE**  
FOSTER CITY, CA



## **Class A Office Space**

4<sup>th</sup>, 5<sup>th</sup> & 6<sup>th</sup> Floors  
Available for Sublease



## PROPERTY HIGHLIGHTS



4<sup>th</sup> floor can be leased separately than 5<sup>th</sup> & 6<sup>th</sup> floors



On-site fitness center with lockers and shower



Quick access to highways 92 & 101 and San Mateo Bridge



24-hour in-lobby Security



Access to park-like courtyard



On-site café & walking distance to amenities



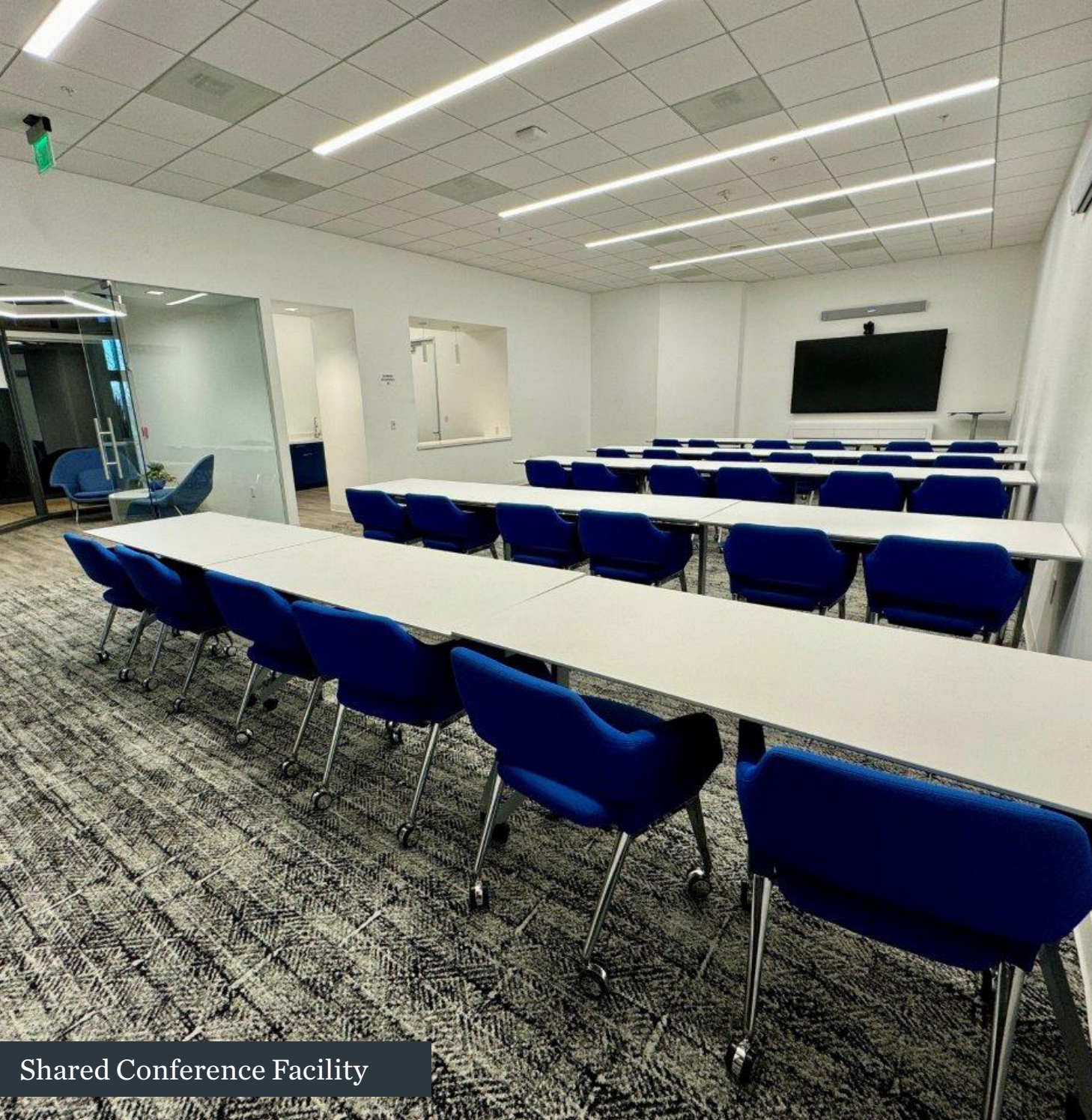
Secure, on-site parking

**20,180 SF**  
4<sup>TH</sup> FLOOR

**21,958 SF**  
5<sup>TH</sup> FLOOR

**22,598 SF**  
6<sup>TH</sup> FLOOR

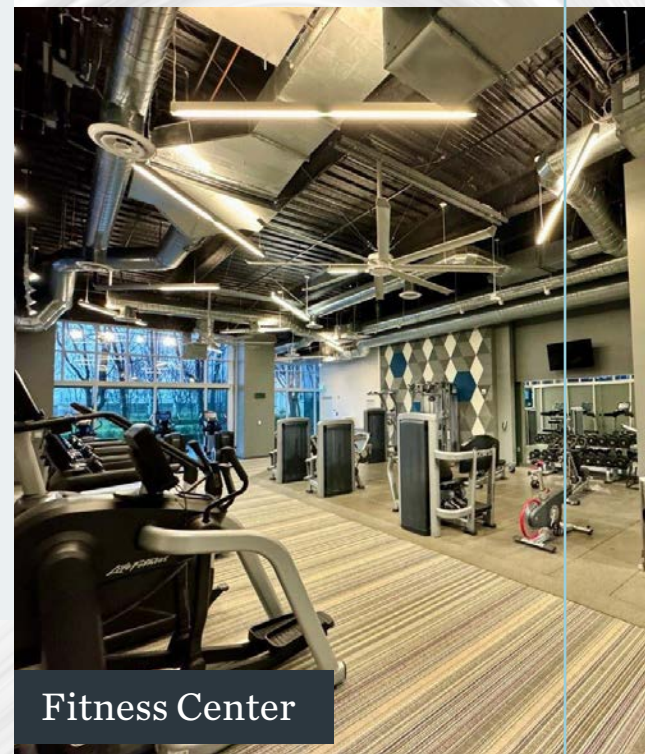
Term: 3+ years | 5<sup>th</sup> & 6<sup>th</sup> Floors are Connected with an Inner-Connecting Stairwell



Shared Conference Facility



**ON-SITE**  
*AMENITIES*

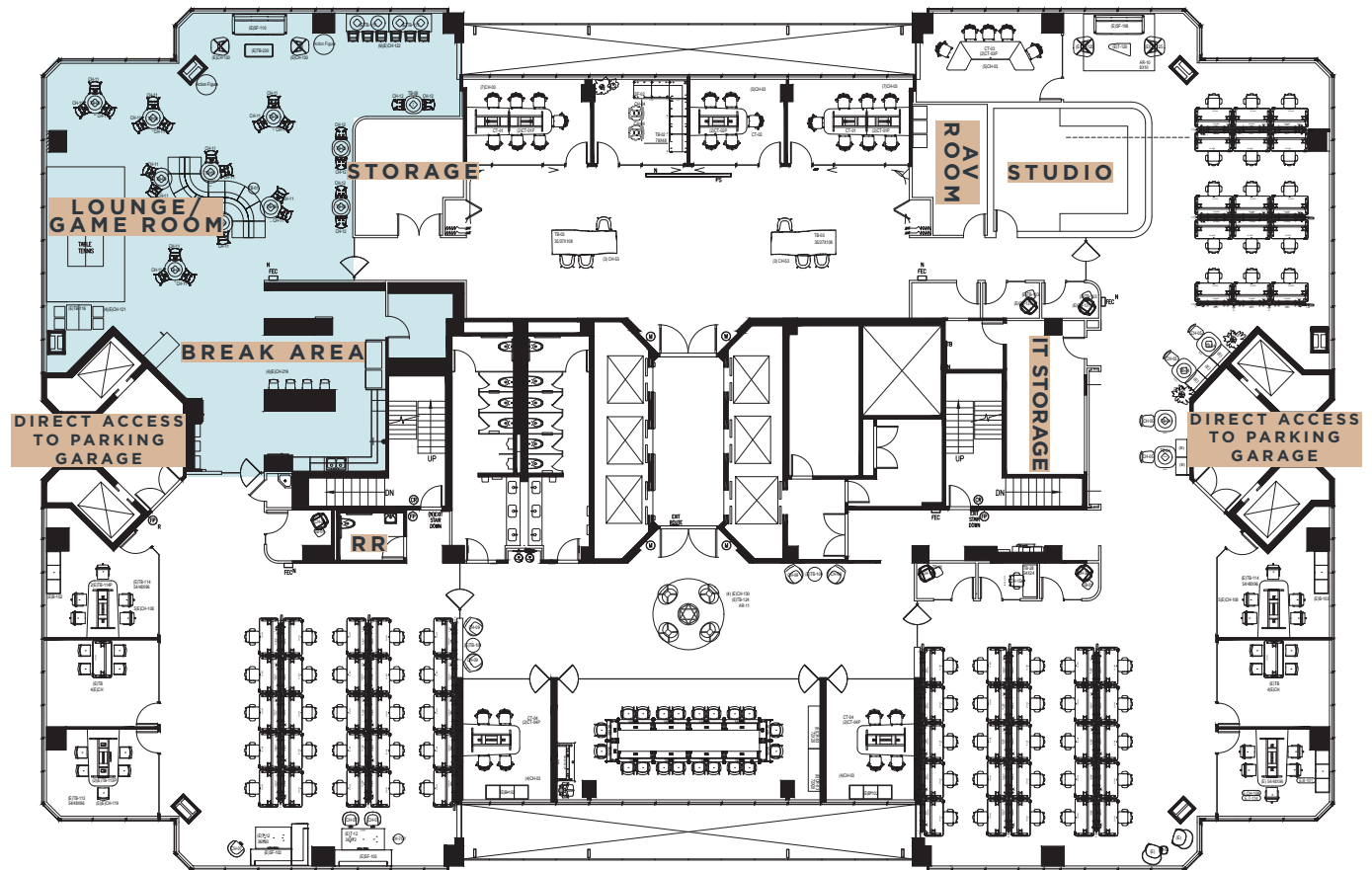


Fitness Center

# 20,180 SF

## 4<sup>TH</sup> FLOOR

- 1 Board Room/Training
- 11 Meeting Rooms
- 2 Offices
- 7 Call Rooms
- 65 Workstations
- Open Break Room & Lounge

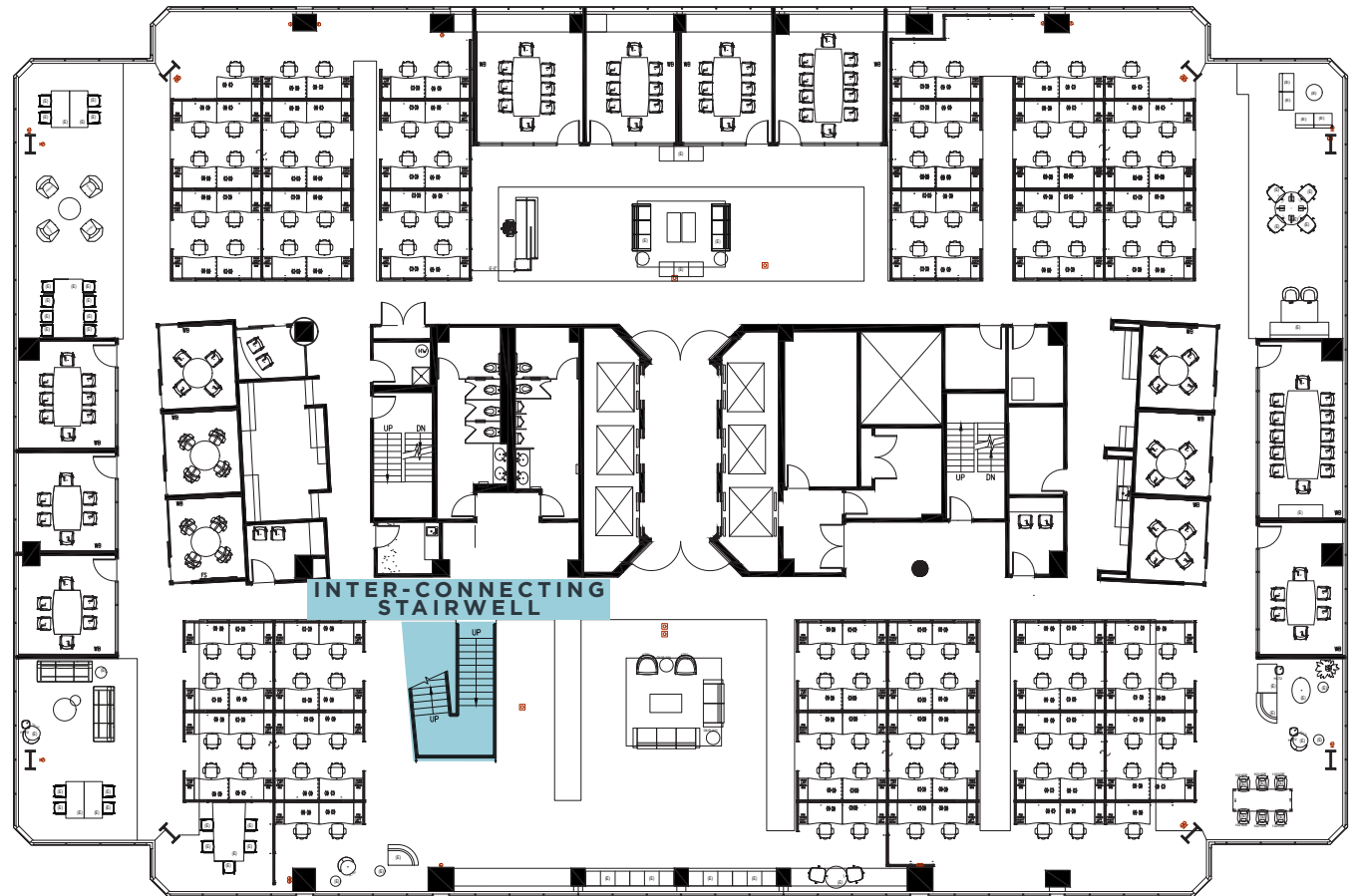


# 21,958 SF

## 5<sup>TH</sup> FLOOR

### INTERCONNECTING STAIRWELL TO THE 6<sup>TH</sup> FLOOR

- 15 Meeting Rooms
- 3 Call Rooms
- 115 Workstations
- Mother's Room

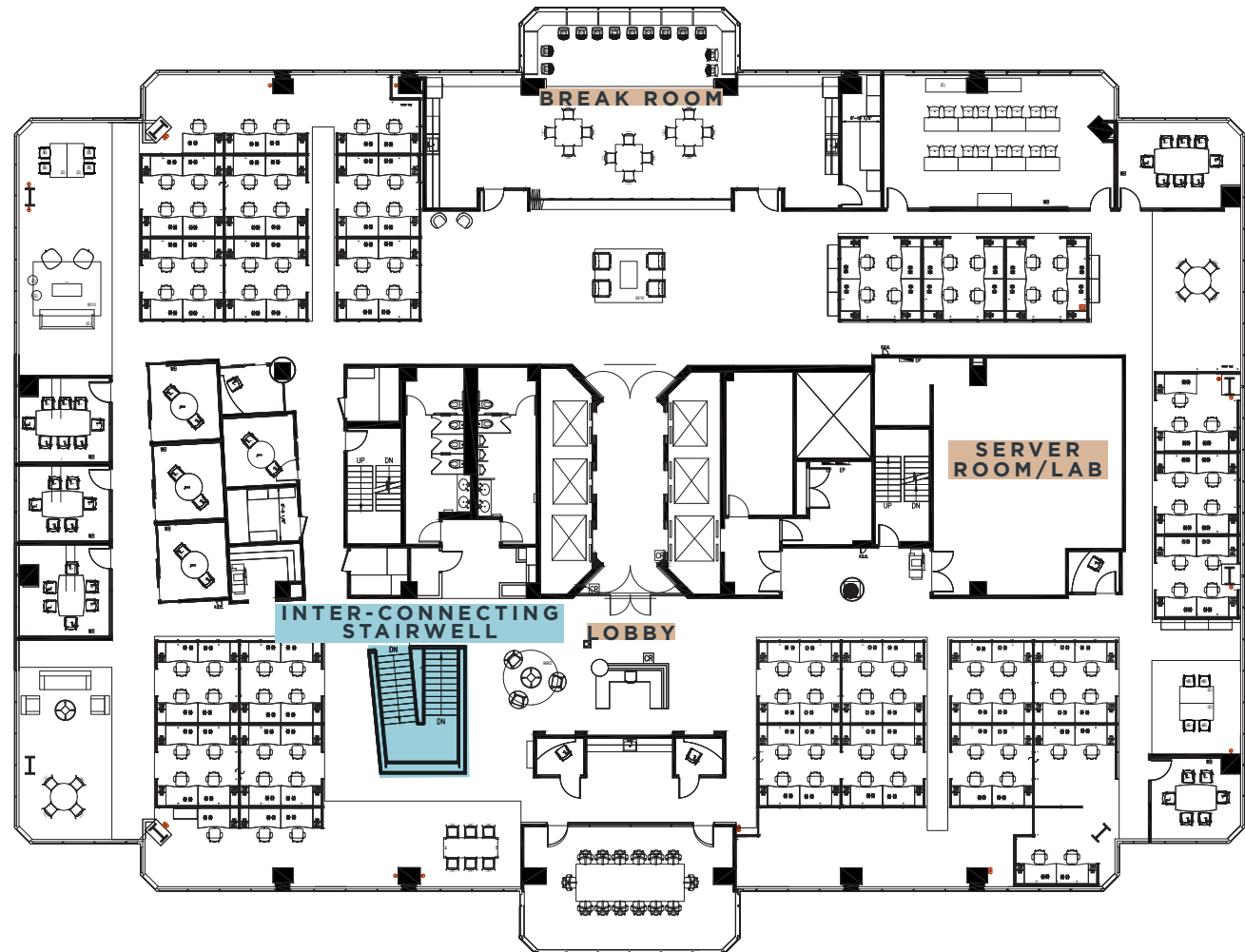


# 22,598 SF

## 6<sup>TH</sup> FLOOR

INTERCONNECTING STAIRWELL  
TO THE 5<sup>TH</sup> FLOOR

- Reception
- 2 Board Rooms - 1 Board Room/Training Room
- 9 Meeting Rooms
- 4 Call Rooms
- 103 Workstations
- Open Break Room/All Hands Space
- Server Room/Lab with 2-20 Ton Dedicated HVAC Units



## HOTELS

- 1 TownePlace Suites by Marriott
- 2 Courtyard by Marriott
- 3 Hilton Garden Inn

## RESTAURANTS

- 1 MJ Sushi - Foster City
- 2 Chez Xue
- 3 Five Guys
- 4 Chipotle
- 5 BJs Restaurant & Brewhouse

## SHOPPING

- 1 Safeway
- 2 World Market
- 3 Costco Wholesale
- 4 CVS Pharmacy
- 5 Petco
- 6 Hobby Lobby
- 7 The Container Store
- 8 Home Depot
- 9 FedEx Office
- 10 Verizon
- 11 Orangetheory
- 12 Ross & Marshalls
- 13 Five Below
- 14 Target
- 15 Wells Fargo
- 16 Bank of America
- 17 Great Clips
- 18 Nail Salon



# 950

## TOWER LANE

FOSTER CITY, CA

## Class A Office Space

4<sup>th</sup>, 5<sup>th</sup> & 6<sup>th</sup> Floors  
Available for Sublease

### PETER HAMANN

Vice Chairman  
+1 408 813 7646  
peter.hamann@cushwake.com  
LIC #01349448

### JOE BRADY

Vice Chairman  
+1 408 799 2259  
joe.brady@cushwake.com  
LIC #01394602

