

111 ANZA BLVD.

BURLINGAME, CA 94010

AVAILABLE
CLASS A OFFICE SPACE
±590 - ±8,500 SF



HOME

HIGHLIGHTS

AVAILABLE

LOCATION

CONTACT US

For more information, please contact:

Clarke Funkhouser
Senior Managing Director
+1 650 619 5579
clarke.funkhouser@jll.com
LIC #01252763

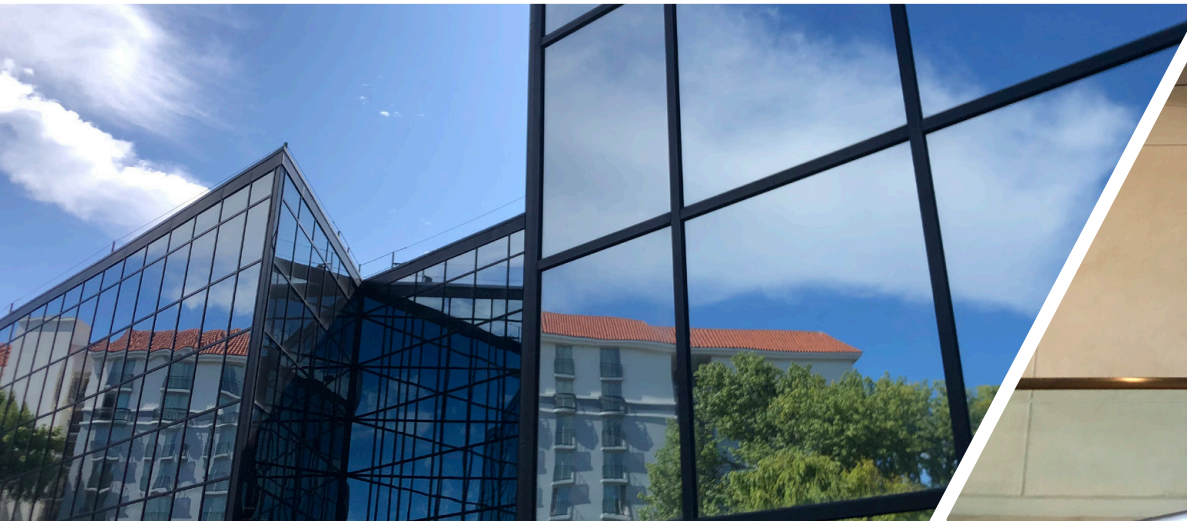
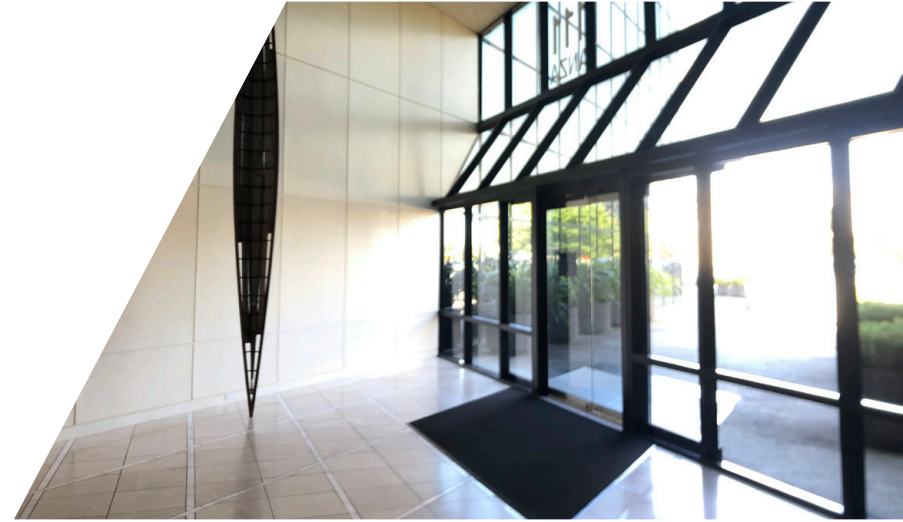
Chris Blom
Director
+1 650 931 2210
chris.blom@cushwake.com
LIC #02031205

 **CUSHMAN & WAKEFIELD**
cushmanwakefield.com

©2024 Cushman & Wakefield. All rights reserved. The information contained in this communication is strictly confidential. This information has been obtained from sources believed to be reliable but has not been verified. NO WARRANTY OR REPRESENTATION, EXPRESS OR IMPLIED, IS MADE AS TO THE CONDITION OF THE PROPERTY (OR PROPERTIES) REFERENCED HEREIN OR AS TO THE ACCURACY OR COMPLETENESS OF THE INFORMATION CONTAINED HEREIN, AND SAME IS SUBMITTED SUBJECT TO ERRORS, OMISSIONS, CHANGE OF PRICE, RENTAL OR OTHER CONDITIONS, WITHDRAWAL WITHOUT NOTICE, AND TO ANY SPECIAL LISTING CONDITIONS IMPOSED BY THE PROPERTY OWNER(S). ANY PROJECTIONS, OPINIONS OR ESTIMATES ARE SUBJECT TO UNCERTAINTY AND DO NOT SIGNIFY CURRENT OR FUTURE PROPERTY PERFORMANCE. COE-PM-West-10.30.2024

PROPERTY HIGHLIGHTS

- Class A Building
- Remodeled Lobby & Corridors
- Workout Room & Showers
- Gigi's Café Onsite -Included in Yelp's Top 100 Places to Eat
- Peninsula's First Solar Office Building
- Covered Parking
- Available Now
- Call to Tour



For more information, please contact:

Clarke Funkhouser
Senior Managing Director
+1 650 619 5579
clarke.funkhouser@jll.com
LIC #01252763



Chris Blom
Director
+1 650 931 2210
chris.blom@cushwake.com
LIC #02031205



cushmanwakefield.com

AVAILABLE SUITES

Click Suite Number to View Floor Plan

Suite #	SF	Available Date	Virtual Tour
107	±590	Available Now	-
202	±1,805	Available 9/1/24	-
304	±2,176	Available Now	
309	±1,555	Available Now <i>*Can Be Combined with Suite 350 for ±6,437 SF</i>	-
320	±2,098	Available Now <i>*Can Be Combined with Suite 330 for ±8,500 SF</i>	-
330	±6,402	Available Now <i>*Can Be Combined with Suite 320 for ±8,500 SF</i>	-
350	±4,882	Available Now <i>*Can Be Combined with Suite 309 for ±6,437 SF</i>	-
406	±5,248	Available Now	
412	±1,127	Available Now	-
430	±1,817	Available Now	-



For more information, please contact:

Clarke Funkhouser
Senior Managing Director
+1 650 619 5579
clarke.funkhouser@jll.com
LIC #01252763

Chris Blom
Director
+1 650 931 2210
chris.blom@cushwake.com
LIC #02031205

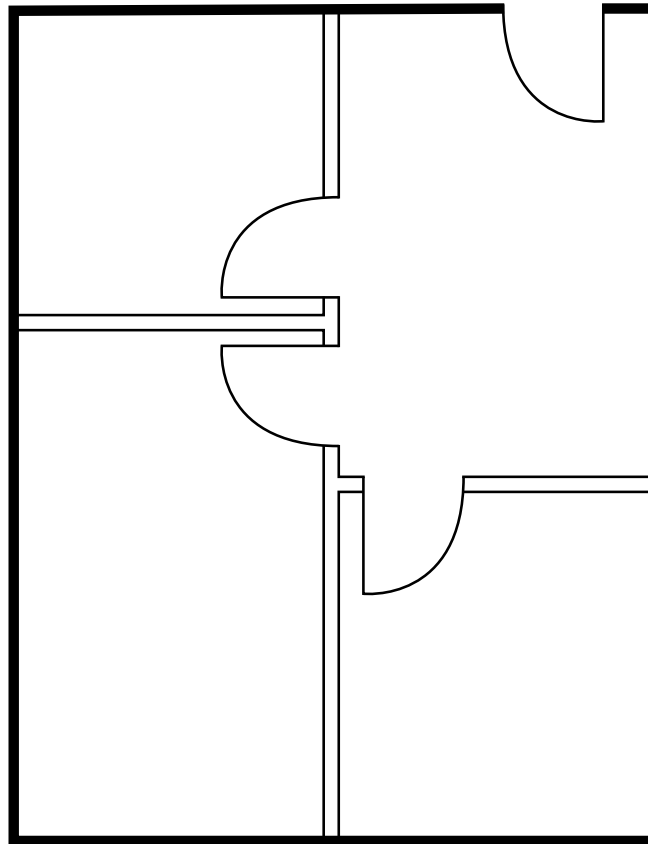


cushmanwakefield.com

AVAILABLE

Suite 107 | ±590 SF

Available Now



For more information, please contact:

Clarke Funkhouser
Senior Managing Director
+1 650 619 5579
clarke.funkhouser@jll.com
LIC #01252763

Chris Blom
Director
+1 650 931 2210
chris.blom@cushwake.com
LIC #02031205

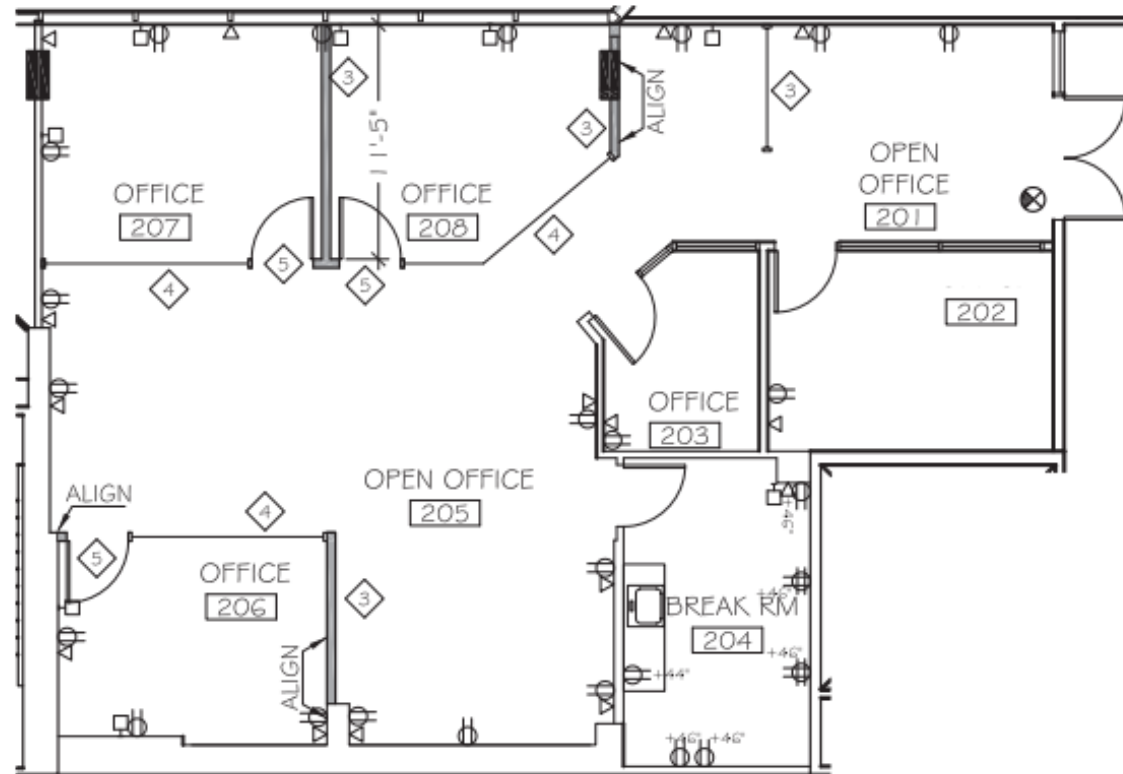


cushmanwakefield.com

AVAILABLE

Suite 202 | ±1,805 SF

Available 9/1/24



For more information, please contact:

Clarke Funkhouser
Senior Managing Director
+1 650 619 5579
clarke.funkhouser@jll.com
LIC #01252763

Chris Blom
Director
+1 650 931 2210
chris.blom@cushwake.com
LIC #02031205



cushmanwakefield.com

111 Anza Blvd. Burlingame, California

HOME

HIGHLIGHTS

AVAILABLE

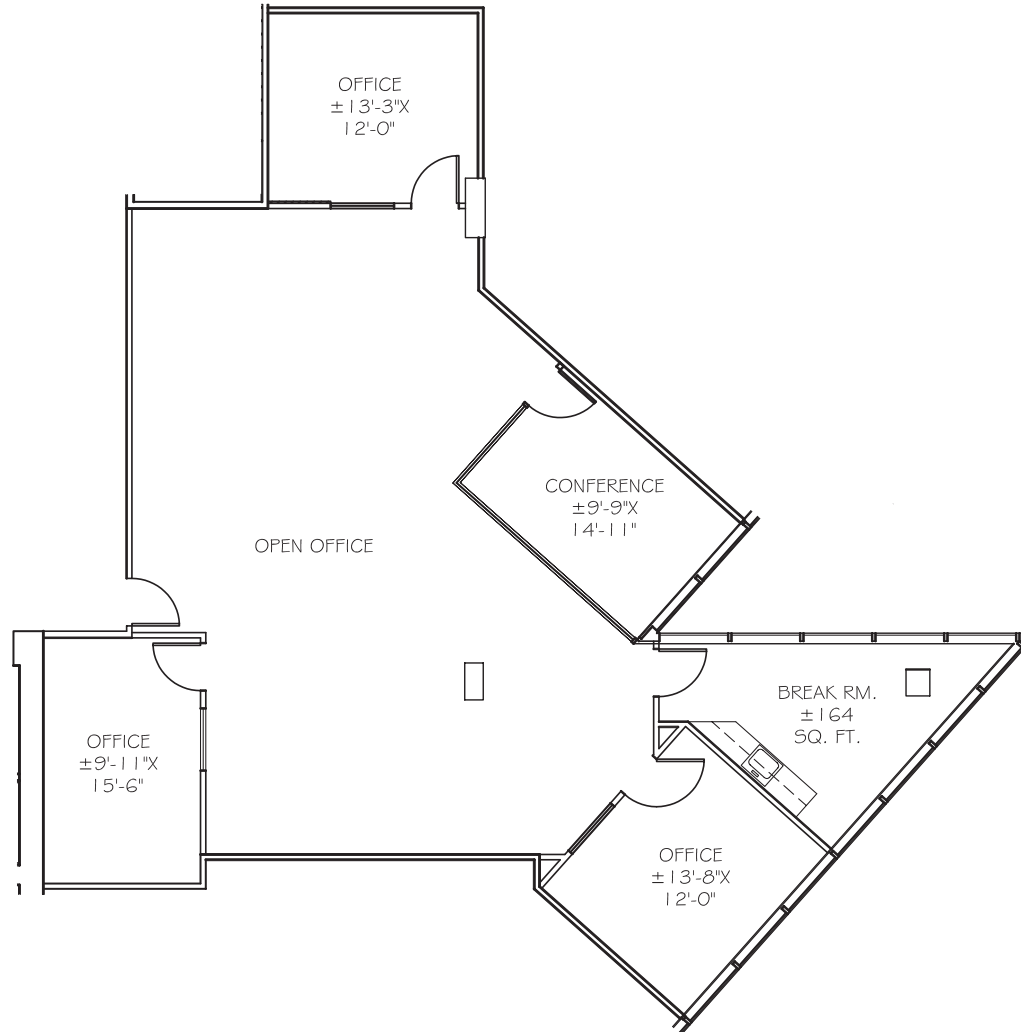
LOCATION

CONTACT US

AVAILABLE

Suite 304 | ±2,176 SF

Available Now



For more information, please contact:

Clarke Funkhouser
Senior Managing Director
+1 650 619 5579
clarke.funkhouser@jll.com
LIC #01252763

Chris Blom
Director
+1 650 931 2210
chris.blom@cushwake.com
LIC #02031205



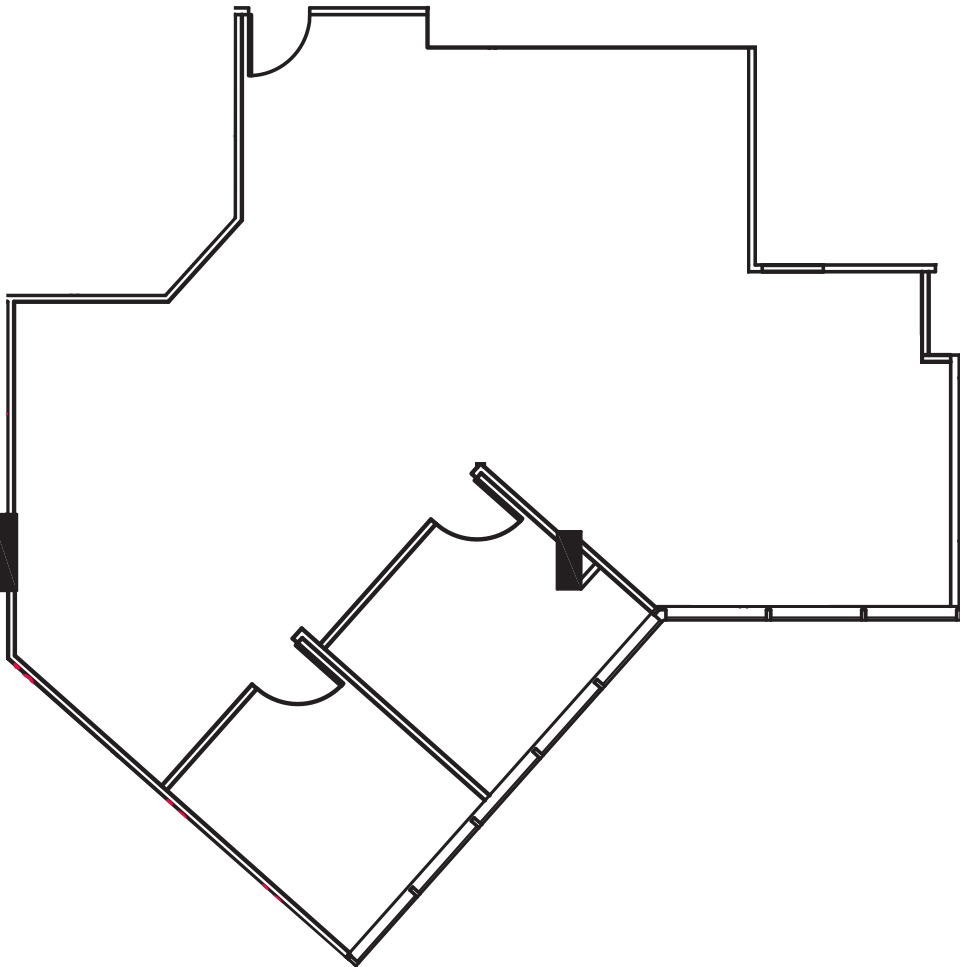
cushmanwakefield.com

AVAILABLE

Suite 309 | ±1,555 SF

Available Now

**Can Be Combined with Suite 350 for ±6,437 SF*



Suite 309 & 350 Combined

Suite 309
±1,555 SF

Suite 350
±4,882 SF

For more information, please contact:

Clarke Funkhouser
Senior Managing Director
+1 650 619 5579
clarke.funkhouser@jll.com
LIC #01252763

Chris Blom
Director
+1 650 931 2210
chris.blom@cushwake.com
LIC #02031205



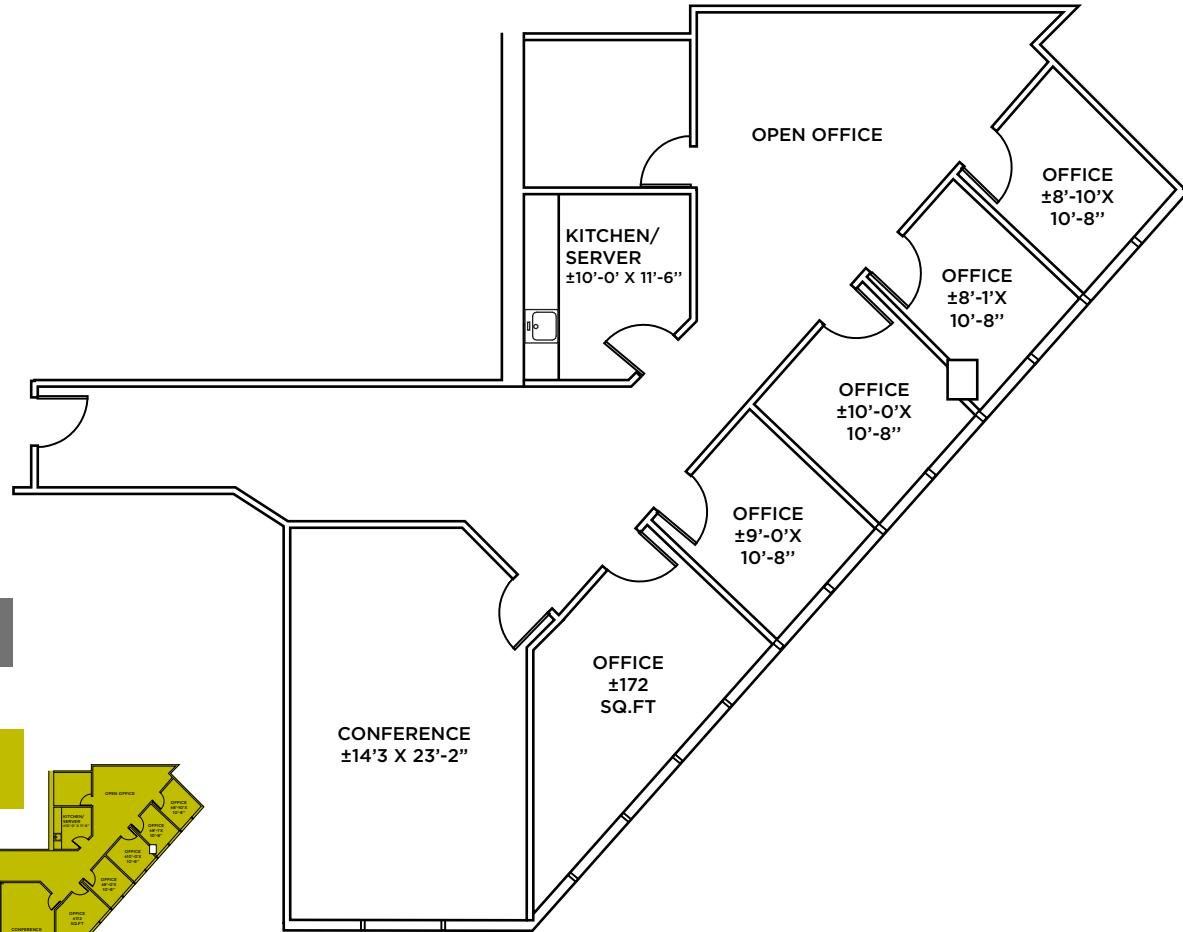
cushmanwakefield.com

AVAILABLE

Suite 320 | ±2,098 SF

Available Now

**Can Be Combined with Suite 330 for ±8,500 SF*



Suite 320 & 330 Combined

Suite 330
±6,402 SF

Suite 320
±2,098 SF



For more information, please contact:

Clarke Funkhouser
Senior Managing Director
+1 650 619 5579
clarke.funkhouser@jll.com
LIC #01252763

Chris Blom
Director
+1 650 931 2210
chris.blom@cushwake.com
LIC #02031205



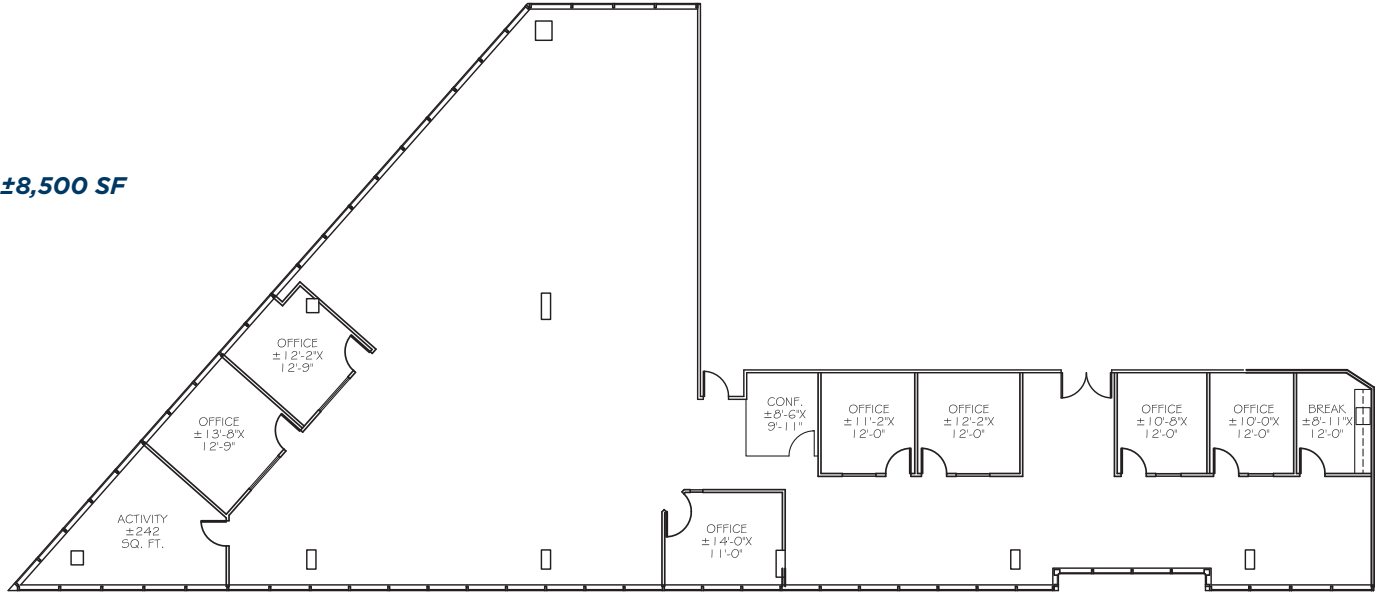
cushmanwakefield.com

AVAILABLE

Suite 330 | ±6,402 SF

Available Now

**Can Be Combined with Suite 320 for ±8,500 SF*



Suite 320 & 330 Combined

Suite 330
±6,402 SF

Suite 320
±2,098 SF



For more information, please contact:

Clarke Funkhouser
Senior Managing Director
+1 650 619 5579
clarke.funkhouser@jll.com
LIC #01252763

Chris Blom
Director
+1 650 931 2210
chris.blom@cushwake.com
LIC #02031205



cushmanwakefield.com

111 Anza Blvd. Burlingame, California

HOME

HIGHLIGHTS

AVAILABLE

LOCATION

CONTACT US

AVAILABLE

Suite 350 | ±4,882 SF

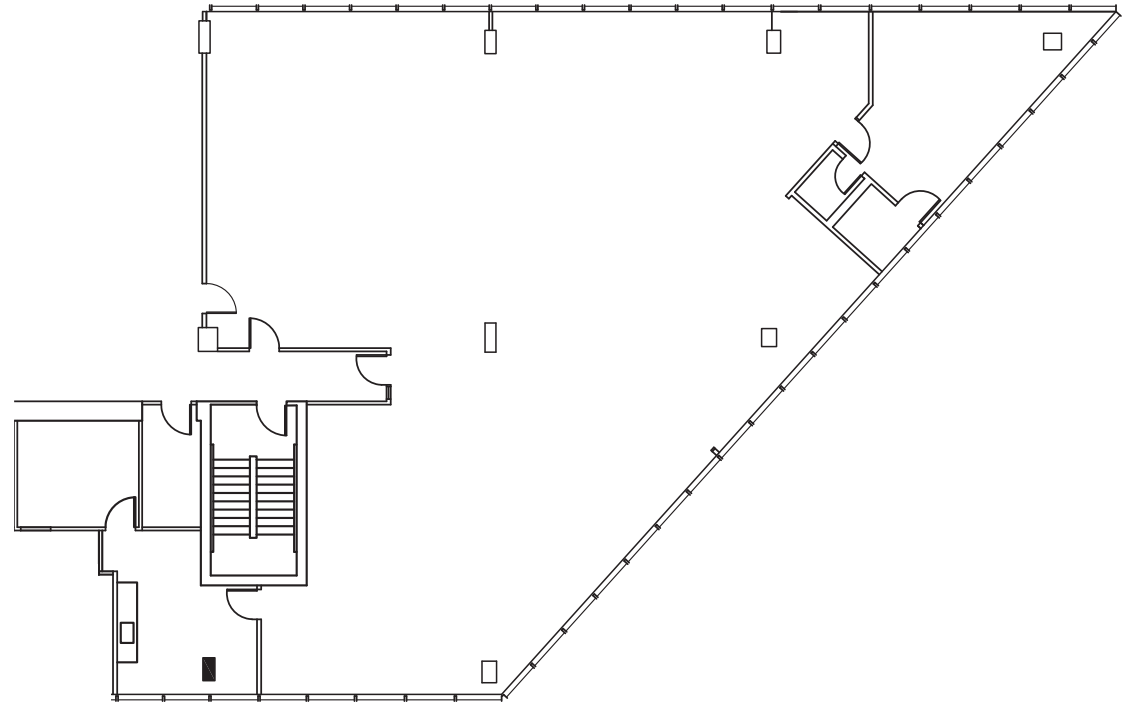
Available Now

**Can Be Combined with Suite 350 for ±6,437 SF*

Suite 309 & 350 Combined

Suite 309
±1,555 SF

Suite 350
±4,882 SF



For more information, please contact:

Clarke Funkhouser
Senior Managing Director
+1 650 619 5579
clarke.funkhouser@jll.com
LIC #01252763

Chris Blom
Director
+1 650 931 2210
chris.blom@cushwake.com
LIC #02031205

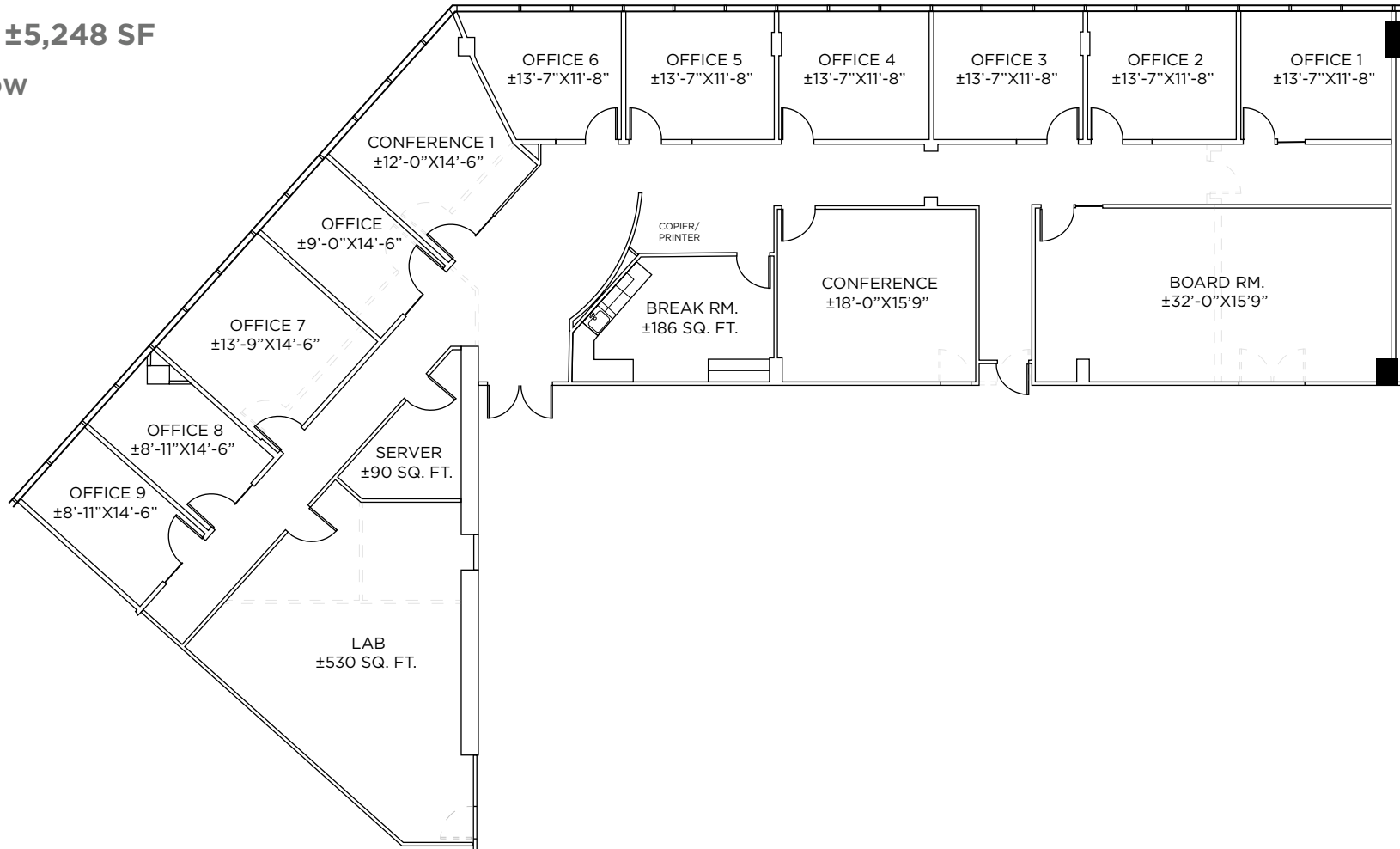


cushmanwakefield.com

AVAILABLE

Suite 406 | ±5,248 SF

Available Now



For more information, please contact:

Clarke Funkhouser
Senior Managing Director
+1 650 619 5579
clarke.funkhouser@jll.com
LIC #01252763

Chris Blom
Director
+1 650 931 2210
chris.blom@cushwake.com
LIC #02031205

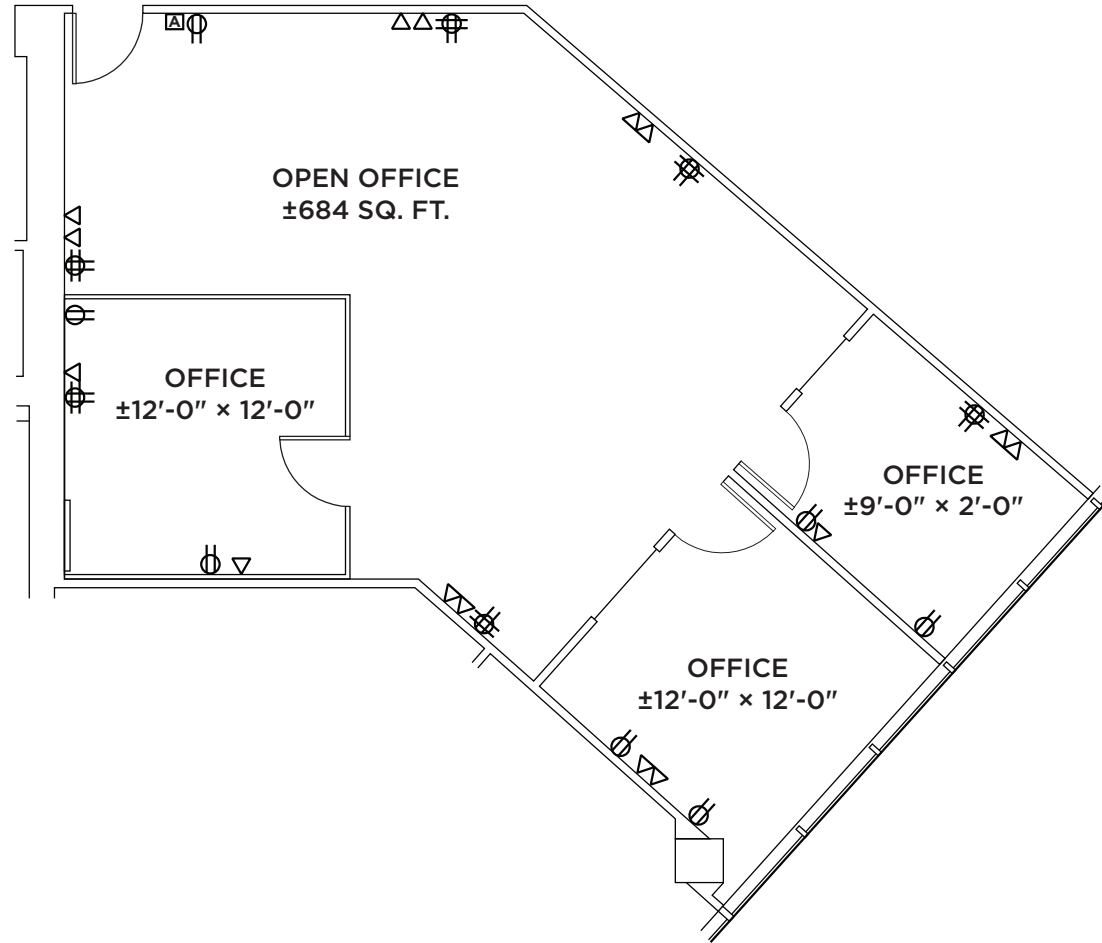


cushmanwakefield.com

AVAILABLE

Suite 412 | ±1,127 SF

Available Now



For more information, please contact:

Clarke Funkhouser
Senior Managing Director
+1 650 619 5579
clarke.funkhouser@jll.com
LIC #01252763

Chris Blom
Director
+1 650 931 2210
chris.blom@cushwake.com
LIC #02031205

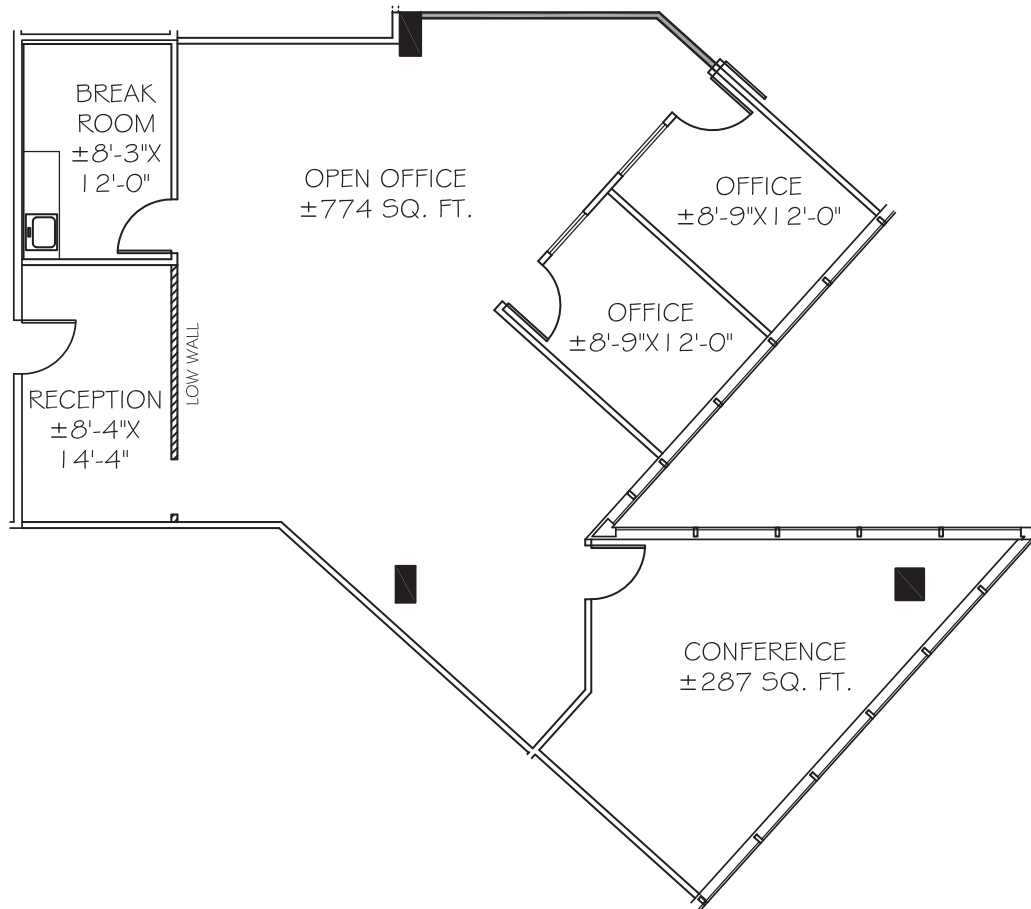


cushmanwakefield.com

AVAILABLE

Suite 430 | ±1,817 SF

Available Now



For more information, please contact:

Clarke Funkhouser
Senior Managing Director
+1 650 619 5579
clarke.funkhouser@jll.com
LIC #01252763

Chris Blom
Director
+1 650 931 2210
chris.blom@cushwake.com
LIC #02031205



cushmanwakefield.com

111 Anza Blvd. Burlingame, California

HOME

HIGHLIGHTS

AVAILABLE

LOCATION

CONTACT US

LEGEND

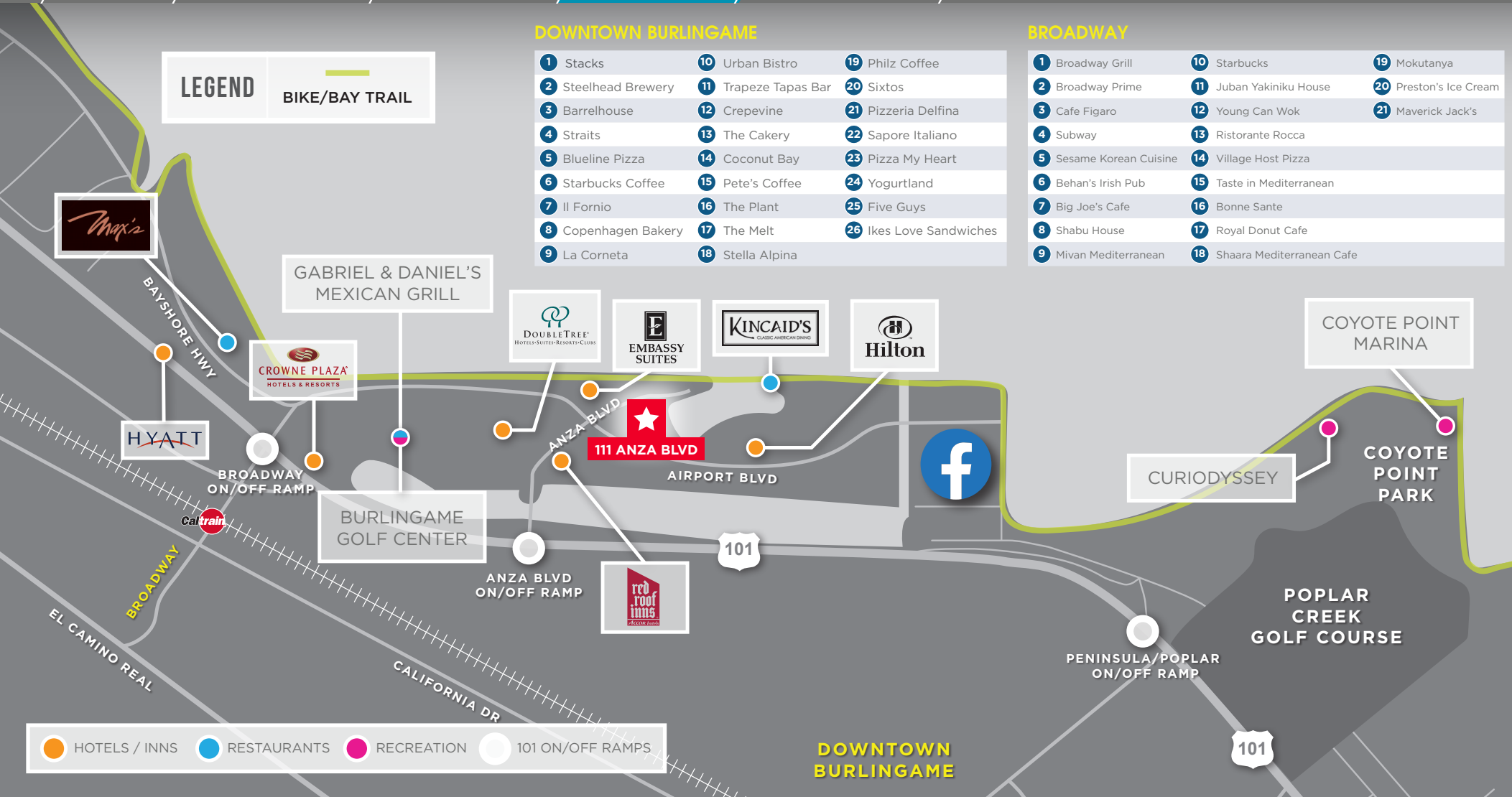
BIKE/BAY TRAIL

DOWNTOWN BURLINGAME

- | | | |
|---------------------|----------------------|-------------------------|
| 1 Stacks | 10 Urban Bistro | 19 Philz Coffee |
| 2 Steelhead Brewery | 11 Trapeze Tapas Bar | 20 Sixtos |
| 3 Barrelhouse | 12 Crepevine | 21 Pizzeria Delfina |
| 4 Straits | 13 The Cakery | 22 Sapore Italiano |
| 5 Blueline Pizza | 14 Coconut Bay | 23 Pizza My Heart |
| 6 Starbucks Coffee | 15 Pete's Coffee | 24 Yogurtland |
| 7 Il Forno | 16 The Plant | 25 Five Guys |
| 8 Copenhagen Bakery | 17 The Melt | 26 Ikes Love Sandwiches |
| 9 La Corneta | 18 Stella Alpina | |

BROADWAY

- | | | |
|-------------------------|------------------------------|------------------------|
| 1 Broadway Grill | 10 Starbucks | 19 Mokutanya |
| 2 Broadway Prime | 11 Juban Yakiniiku House | 20 Preston's Ice Cream |
| 3 Cafe Figaro | 12 Young Can Wok | 21 Maverick Jack's |
| 4 Subway | 13 Ristorante Rocca | |
| 5 Sesame Korean Cuisine | 14 Village Host Pizza | |
| 6 Behan's Irish Pub | 15 Taste in Mediterranean | |
| 7 Big Joe's Cafe | 16 Bonne Sante | |
| 8 Shabu House | 17 Royal Donut Cafe | |
| 9 Mivan Mediterranean | 18 Shaara Mediterranean Cafe | |



- HOTELS / INNS
- RESTAURANTS
- RECREATION
- 101 ON/OFF RAMPS

DOWNTOWN BURLINGAME

For more information, please contact:

Clarke Funkhouser
Senior Managing Director
+1 650 619 5579
clarke.funkhouser@jll.com
LIC #01252763

Chris Blom
Director
+1 650 931 2210
chris.blom@cushwake.com
LIC #02031205



cushmanwakefield.com

111 Anza Blvd. Burlingame, California

[HOME](#)[HIGHLIGHTS](#)[AVAILABLE](#)[LOCATION](#)[CONTACT US](#)

CONTACT US

Clarke Funkhouser
Senior Managing Director
+1 650 619 5579
clarke.funkhouser@jll.com
LIC #01252763

Chris Blom
Director
+1 650 931 2210
chris.blom@cushwake.com
LIC #02031205

About Cushman & Wakefield

Cushman & Wakefield is a global leader in commercial real estate services, helping clients transform the way people work, shop, and live. The firm's 43,000 employees in more than 60 countries provide deep local and global insights that create significant value for occupiers and investors around the world. Cushman & Wakefield is among the largest commercial real estate services firms with revenues of \$5 billion across core services of agency leasing, asset services, capital markets, facility services (branded C&W Services), global occupier services, investment management (branded DTZ Investors), project & development services, tenant representation and valuation & advisory. To learn more, visit www.cushmanwakefield.com or follow @CushWake on Twitter.



For more information, please contact:

Clarke Funkhouser
Senior Managing Director
+1 650 619 5579
clarke.funkhouser@jll.com
LIC #01252763

Chris Blom
Director
+1 650 931 2210
chris.blom@cushwake.com
LIC #02031205



cushmanwakefield.com