

FOR LEASE - OFFICE / MEDICAL SPACE
Office Available in Concord
2600 Stanwell Drive, Concord, California



AVAILABLE SPACE

First Floor:

Suite 100	±5,786 RSF
Suite 103	±1,580 RSF
Suite 104	±4,316 RSF

Second Floor:

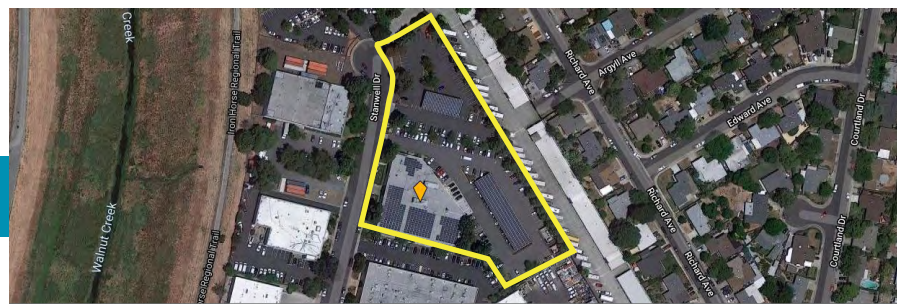
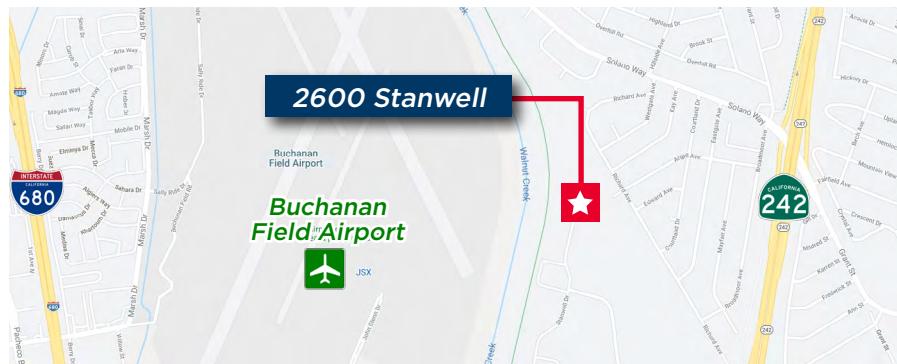
Suite 200	±7,747 RSF
------------------	------------

FACILITY

- Parking: 5/1,000 RSF
- Uses: General Office and Medical
- Close access to Highway 242 & Interstate 680
- Sprinklered
- Total Building size: ±46,826 RSF

Rate: \$1.50/RSF Full Service for Year 1
\$1.00/RSF Broker Bonus for New Deals

[View Site Specific COVID-19 Prevention Plan](#)



Chris M. Baker
Executive Director
+1 925 627 2888
chris.baker@cushwake.com
LIC #01334466

Ryan Dalton
Director
+1 510 891 5810
ryan.dalton@cushwake.com
LIC #01809447

1333 N. California Blvd. Suite 500
Wlanut Creek, CA 94596
Main +1 925 935 0770
fax +1 925 935 3409
cushmanwakefield.com

FOR LEASE - OFFICE / MEDICAL SPACE
Office Available in Concord
 2600 Stanwell Drive, Concord, California



AVAILABLE SPACE - 1ST FLOOR



First Floor:	
 Suite 100	±5,786 RSF
 Suite 103	±1,580 RSF
 Suite 104	±4,316 RSF



Chris M. Baker
 Executive Director
 +1 925 627 2888
 chris.baker@cushwake.com
 LIC #01334466

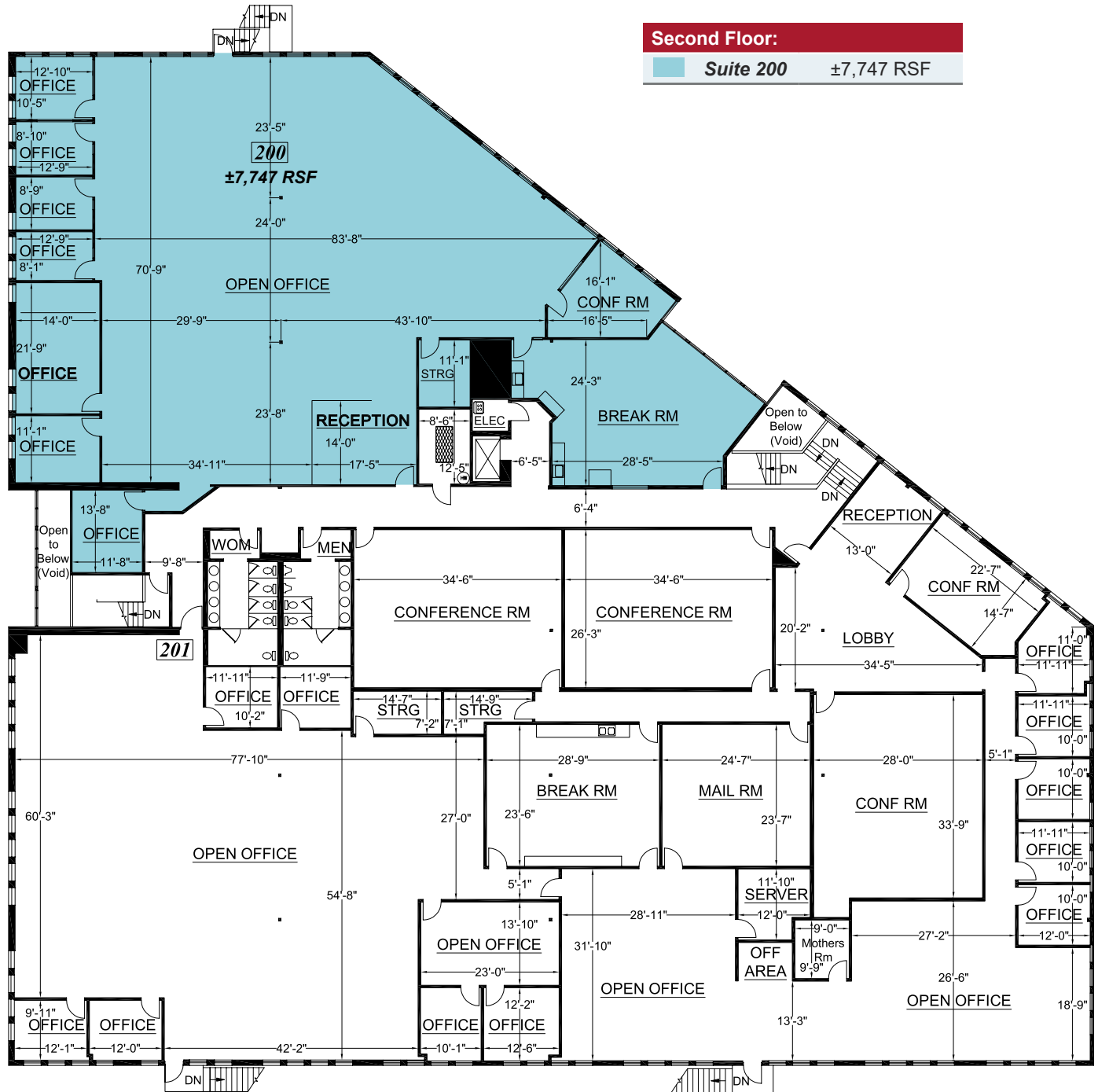
Ryan Dalton
 Director
 +1 510 891 5810
 ryan.dalton@cushwake.com
 LIC #01809447

1333 N. California Blvd. Suite 500
 Wlanut Creek, CA 94596
 Main +1 925 935 0770
 fax +1 925 935 3409
cushmanwakefield.com

FOR LEASE - OFFICE / MEDICAL SPACE
Office Available in Concord
 2600 Stanwell Drive, Concord, California



AVAILABLE SPACE - 2ND FLOOR



Second Floor:
 Suite 200 ±7,747 RSF

Chris M. Baker
 Executive Director
 +1 925 627 2888
 chris.baker@cushwake.com
 LIC #01334466

Ryan Dalton
 Director
 +1 510 891 5810
 ryan.dalton@cushwake.com
 LIC #01809447

1333 N. California Blvd. Suite 500
 Wlanut Creek, CA 94596
 Main +1 925 935 0770
 fax +1 925 935 3409
cushmanwakefield.com

FOR LEASE - OFFICE / MEDICAL SPACE
Office Available in Concord
 2600 Stanwell Drive, Concord, California



Chris M. Baker
 Executive Director
 +1 925 627 2888
chris.baker@cushwake.com
 LIC #01334466

Ryan Dalton
 Director
 +1 510 891 5810
ryan.dalton@cushwake.com
 LIC #01809447

1333 N. California Blvd. Suite 500
 Wlanut Creek, CA 94596
 Main +1 925 935 0770
 fax +1 925 935 3409
cushmanwakefield.com