



**CUSHMAN &
WAKEFIELD**

FOR LEASE

1777 N. California Blvd.

Walnut Creek, CA



Century Plaza is a three-story project consisting of approximately 22,852 Rentable Square Feet conveniently located in downtown Walnut Creek.

Available Space

- Suite 100 - ±3,147 RSF
- Suite 300 - ±2,483 RSF
- Suite 330 - ±3,011 RSF
- Asking Rent: \$2.85 Full Service
- Walking distance to downtown Walnut Creek
- Walking distance to BART
- Direct freeway access
- Professional atmosphere
- Free secured parking



For more information, please contact:

Chris M. Baker

Executive Director

+1 925 627 2888

chris.baker@cushwake.com

LIC #01334466

1333 N. California Blvd., Suite 500
Walnut Creek, CA 94596

ph: +1 925 935 0770

fx: +1 925 935 3409

cushmanwakefield.com

Renovated Common Areas



For more information, please contact:

Chris M. Baker
Executive Director
+1 925 627 2888
chris.baker@cushwake.com
LIC #01334466

1333 N. California Blvd., Suite 500
Walnut Creek, CA 94596

ph: +1 925 935 0770
fx: +1 925 935 3409

cushmanwakefield.com



**CUSHMAN &
WAKEFIELD**

FOR LEASE

1777 N. California Blvd.

Walnut Creek, CA

Suite 100 - ±3,147 Rentable Square Feet



For more information, please contact:

Chris M. Baker

Executive Director

+1 925 627 2888

chris.baker@cushwake.com

LIC #01334466

1333 N. California Blvd., Suite 500
Walnut Creek, CA 94596

ph: +1 925 935 0770

fx: +1 925 935 3409

cushmanwakefield.com



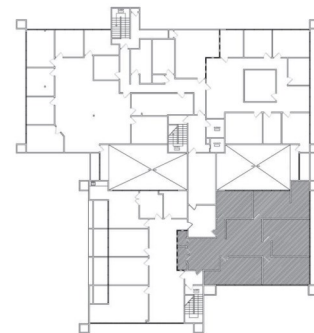
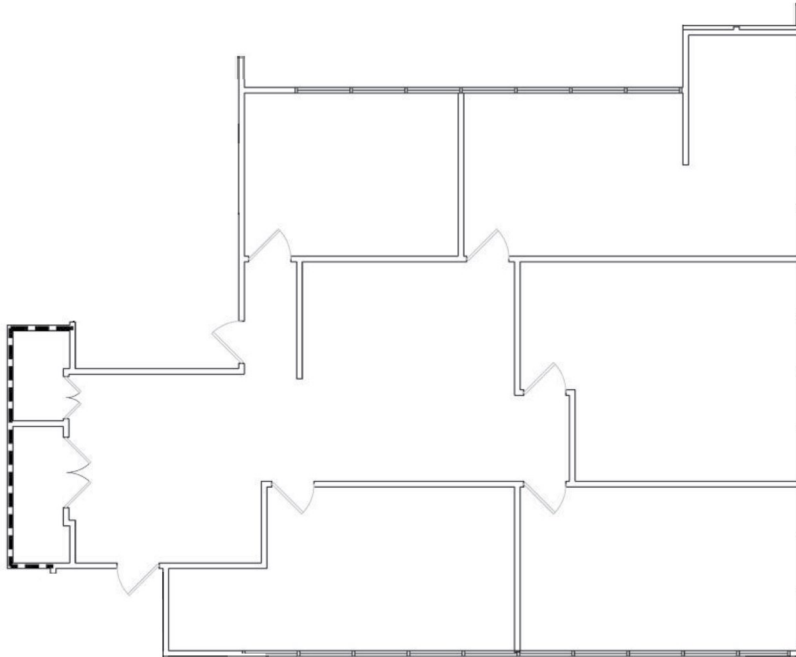
**CUSHMAN &
WAKEFIELD**

FOR LEASE

1777 N. California Blvd.

Walnut Creek, CA

Suite 300 - ±2,483 Rentable Square Feet



For more information, please contact:

Chris M. Baker

Executive Director

+1 925 627 2888

chris.baker@cushwake.com

LIC #01334466

1333 N. California Blvd., Suite 500
Walnut Creek, CA 94596

ph: +1 925 935 0770

fx: +1 925 935 3409

cushmanwakefield.com



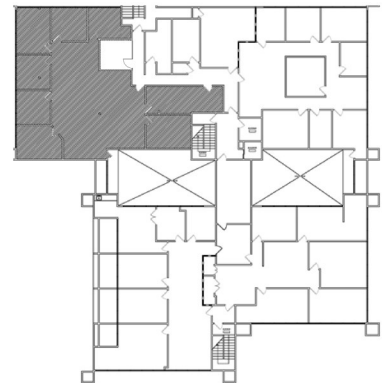
**CUSHMAN &
WAKEFIELD**

FOR LEASE

1777 N. California Blvd.

Walnut Creek, CA

Suite 330 - ±3,011 Rentable Square Feet



For more information, please contact:

Chris M. Baker

Executive Director

+1 925 627 2888

chris.baker@cushwake.com

LIC #01334466

1333 N. California Blvd., Suite 500
Walnut Creek, CA 94596

ph: +1 925 935 0770

fx: +1 925 935 3409

cushmanwakefield.com