

# 1 Thorndale Drive, San Rafael



Class A Medical Space Available



Trevor Buck  
Executive Managing Director  
trevor.buck@cushwake.com  
+1 415 451 2436  
LIC #01255462

Whitney Strotz  
Executive Managing Director  
whitney.strotz@cushwake.com  
+1 415 451 2406  
LIC #01351397

Brian Foster  
Executive Director  
brian.foster@cushwake.com  
+1 415 451 2437  
LIC #01393059

# BUILDING HIGHLIGHTS



BEST VIEWS IN  
MARIN COUNTY



RENOVATED  
COMMON AREAS



NEW HVAC  
SYSTEM



EXTERIOR  
GATHERING AREAS



COVERED AND  
SECURE PARKING



BUILDING  
SHOWERS



OPEN  
FLOORPLAN AND  
HIGH CEILINGS



LOADING CAPACITY  
AVAILABLE



PRIVATE  
TERRACE



RETRACTABLE  
ROOF



COMMON AREA  
ATRIUM WITH WIFI



1500 SF OF  
SECURED STORAGE

± 9,684 RSF  
AVAILABLE

SUITE 100:  
± 1,914 SF

SUITE 205:  
± 3,743 SF

SUITE 310:  
± 4,027 SF

# NEARBY AMENITIES



Rendering of new external elevator

## TRANSPORTATION

- Close to SMART Train stop at Civic Center – Roughly 1.1 miles by walking.
- Less than 1 mile to 2 Marin Transit Bus Stops
- E Bikes Tenant Allowance Available
- Abundant Parking Including valet opportunity

## NORTHGATE MALL

- Home Goods
- Panera
- Chipotle
- Peet's Coffee
- Restoration hardware
- Rite Aid
- Century Theatres
- Black Bear Diner
- Wetzel's Pretzels
- Macy's
- BJ's Restaurant
- Lens Crafters
- Vans
- Claire's
- Bank of Marin
- Panda Express
- Kohl's
- Mi Pueblo

## HEALTH + FITNESS

- Marin YMCA
- Osher Marin JCC
- China Camp State Park
- Flen Fire Road Trailhead
- Deer Park Trailhead
- Cascade Falls

# 1 THORNDALE



CENTURY THEATRES



KOHL'S

RH OUTLET

VANS

Peet's Coffee & Tea



Northgate Drive

SAFEWAY

FedEx Express

SUBWAY

Northgate Mall



macy's Applebees



Las Gallinas Ave



CVS



UnlonBank



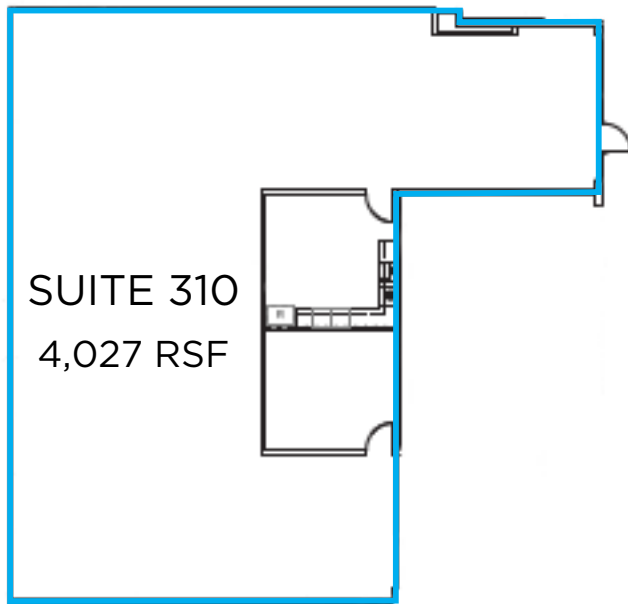
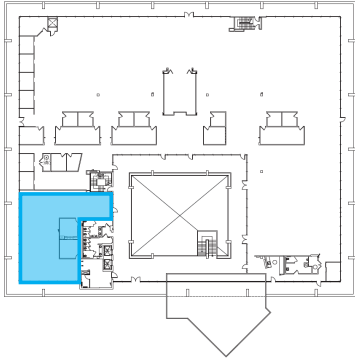
Manuel T Freitas Pkwy

Michaels

FourPoints Sheraton



## UPPER LEVEL FLOOR PLAN

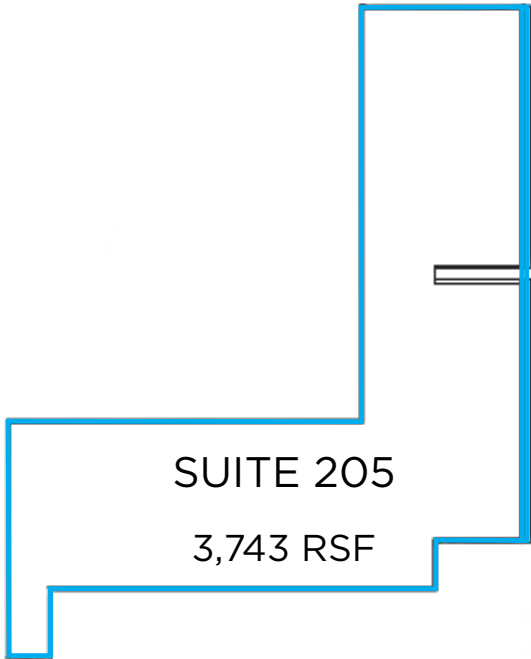
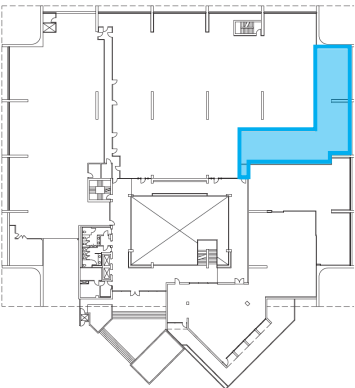


Trevor Buck  
Executive Managing Director  
trevor.buck@cushwake.com  
+1 415 451 2436  
LIC #01255462

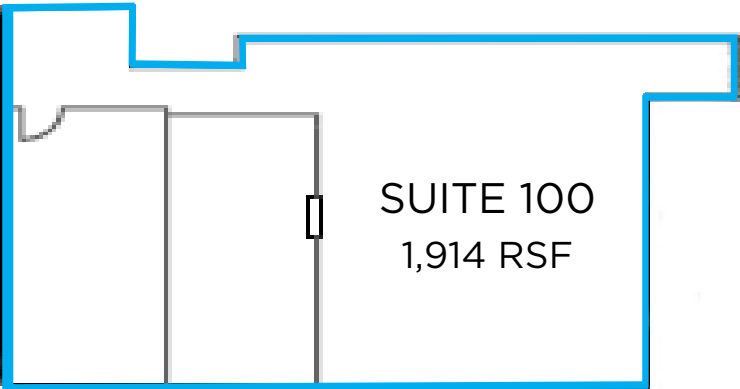
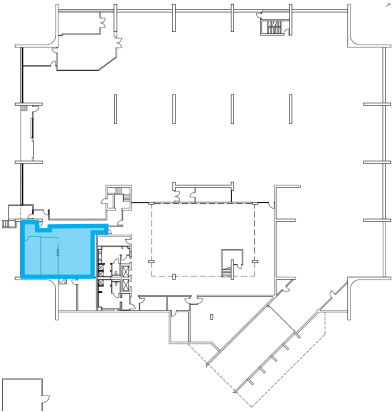
Whitney Strotz  
Executive Managing Director  
whitney.strotz@cushwake.com  
+1 415 451 2406  
LIC #01351397

Brian Foster  
Executive Director  
brian.foster@cushwake.com  
+1 415 451 2437  
LIC #01393059

### MID LEVEL FLOOR PLAN



### LOWER LEVEL FLOOR PLAN



Trevor Buck  
Executive Managing Director  
trevor.buck@cushwake.com  
+1 415 451 2436  
LIC #01255462

Whitney Strotz  
Executive Managing Director  
whitney.strotz@cushwake.com  
+1 415 451 2406  
LIC #01351397

Brian Foster  
Executive Director  
brian.foster@cushwake.com  
+1 415 451 2437  
LIC #01393059

# 1 Thorndale Drive, San Rafael



Class A Medical Space Available



Trevor Buck  
Executive Managing Director  
trevor.buck@cushwake.com  
+1 415 451 2436  
LIC #01255462

Whitney Strotz  
Executive Managing Director  
whitney.strotz@cushwake.com  
+1 415 451 2406  
LIC #01351397

Brian Foster  
Executive Director  
brian.foster@cushwake.com  
+1 415 451 2437  
LIC #01393059