

CLASS A OFFICE FOR SUBLEASE | 2370 KERNER BLVD

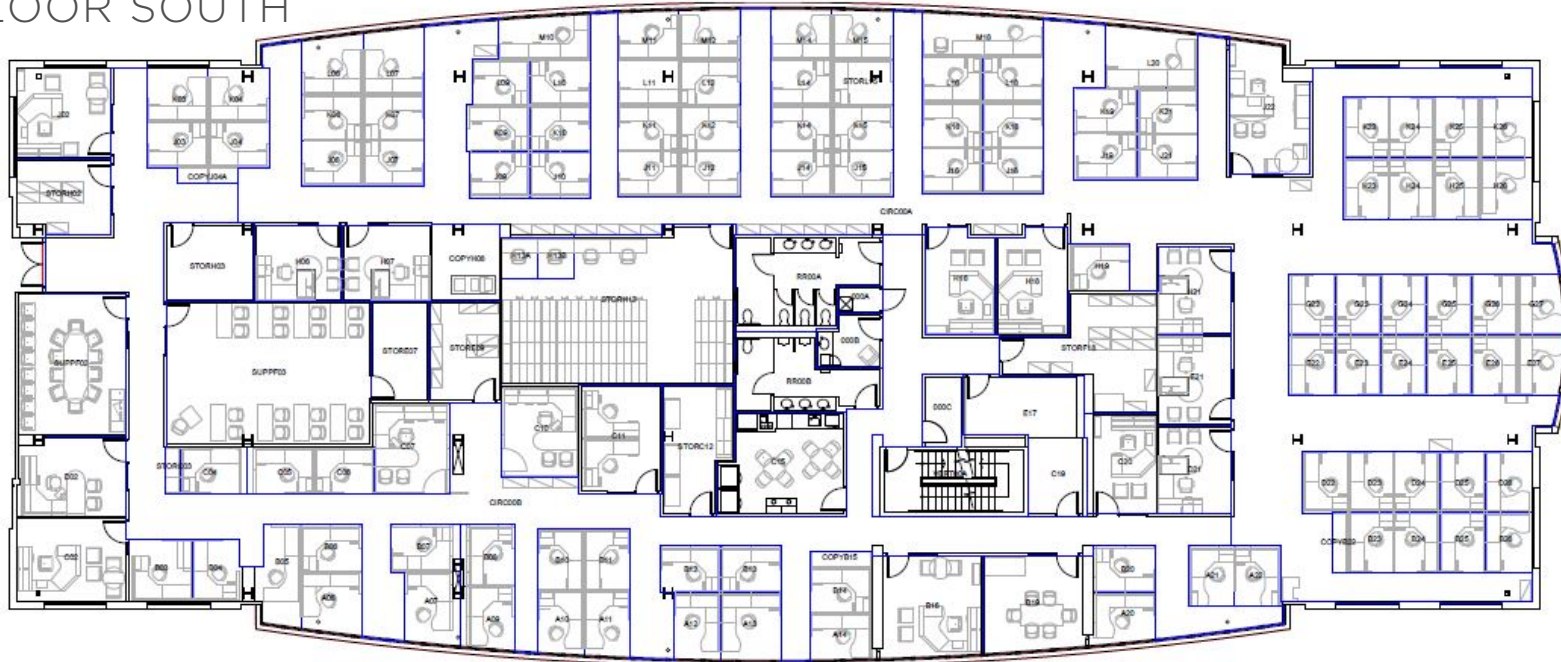
- 39,606 SF Available
- 2 Floors
- Call for rate

- Sublease through 9/30/2023
- Covered parking
- Beautiful walking trails
- Fully furnished | Move in ready

Brian Foster
Executive Director
+1 415 451 2437
brian.foster@cushwake.com
Lic #01393059

Trevor Buck
Executive Managing Director
+1 415 451 2436
trevor.buck@cushwake.com
Lic #01255462

SECOND FLOOR SOUTH



- 19,480 SqFt
- Furniture Available
- Bay views
- Operable windows

Brian Foster
Executive Director
+1 415 451 2437
brian.foster@cushwake.com
Lic #01393059

Trevor Buck
Executive Managing Director
+1 415 451 2436
trevor.buck@cushwake.com
Lic #01255462

900 Larkspur Landing Cir
Suite 295, Larkspur, CA 94939
phone: +1 415 485 0500
cushmanwakefield.com



Brian Foster
Executive Director
+1 415 451 2437
brian.foster@cushwake.com
Lic #01393059

900 Larkspur Landing Cir
Suite 295, Larkspur, CA 94939
phone: +1 415 485 0500
cushmanwakefield.com

Trevor Buck
Executive Managing Director
+1 415 451 2436
trevor.buck@cushwake.com
Lic #01255462

