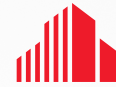


FOR LEASE

6950 Squibb Road
Mission, KS



CUSHMAN &
WAKEFIELD



Property Highlights

- Conveniently located at the intersection of Shawnee Mission Parkway & Metcalf Avenue
- Suites available from 821 - 11,422 SF
- Full-floor suites available with a prominent entry off the lobby
- Asking rate: \$18.00 SF Full Service
- Ample on-site parking
- Numerous restaurants and amenities within a five-block radius
- Easy access to I-35 and I-635
- Main building lobby has been updated and includes a building break room including a micro-market with vending
- Monument signage available
- Property is serviced by a generator and can offer uninterrupted service in the event of power loss



Contact

MARTY GILCHRIST, CCIM
Senior Associate
+1 816 216 5655
marty.gilchrist@cushwake.com

FOR LEASE
6950 Squibb Road
Mission, KS



Interior Photos

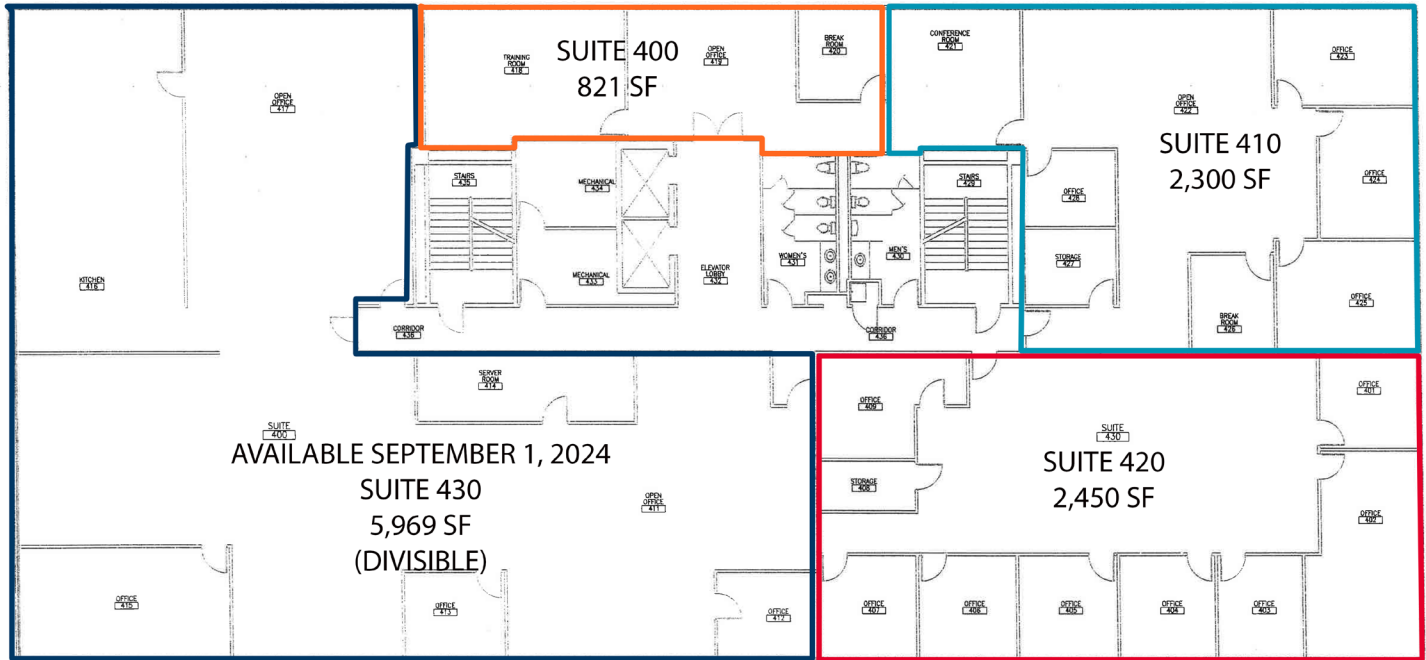


Contact

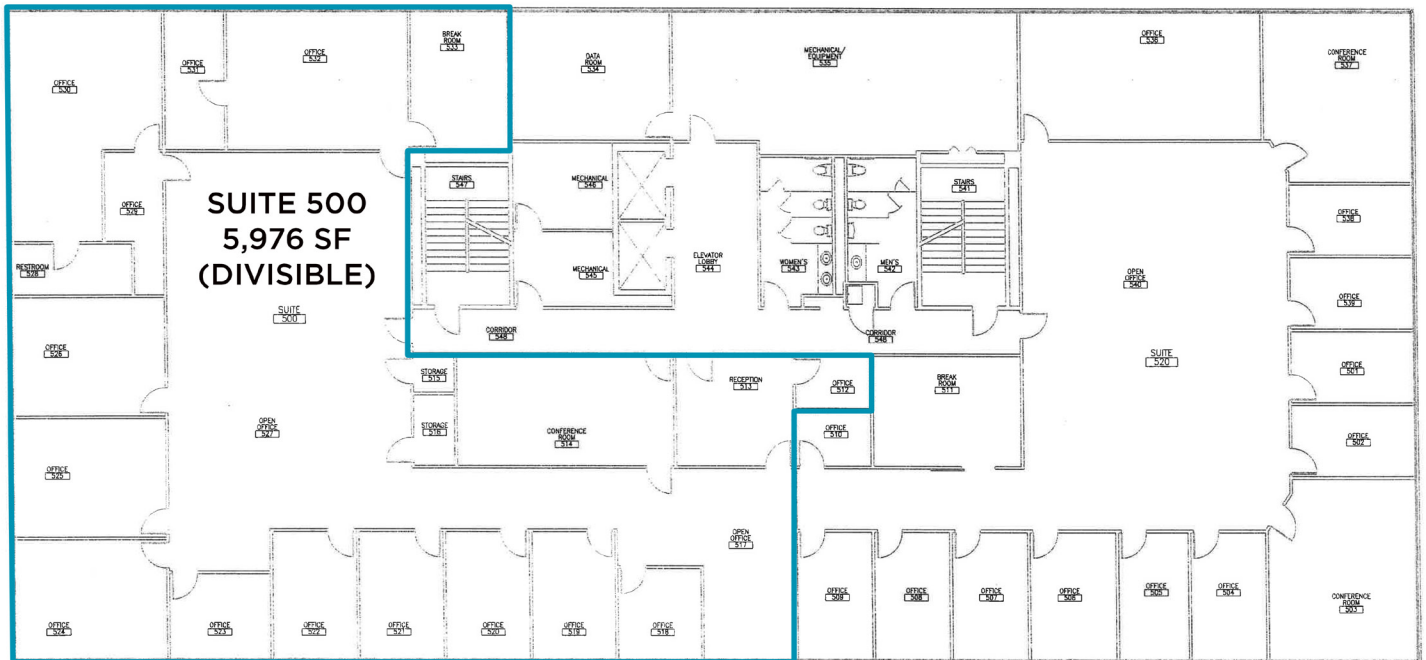
MARTY GILCHRIST, CCIM
Senior Associate
+1 816 216 5655
marty.gilchrist@cushwake.com

4th Floor Plan

ALL FOUR SUITES CAN BE COMBINED FOR A TOTAL OF 11,540 SF



5th Floor Plan



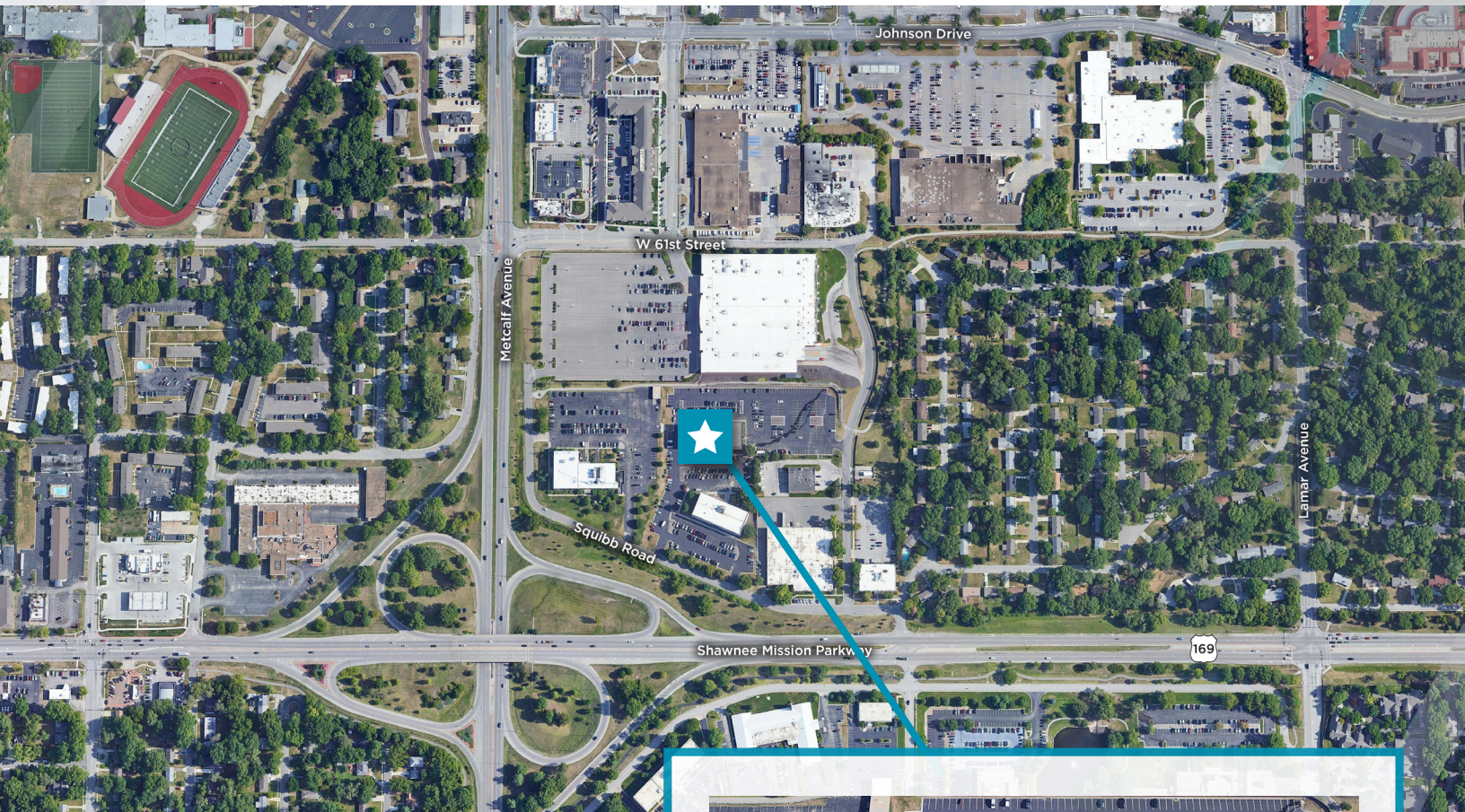
Contact

MARTY GILCHRIST, CCIM
Senior Associate
+1 816 216 5655
marty.gilchrist@cushwake.com

FOR LEASE
6950 Squibb Road
Mission, KS



Location Aerial



Contact

MARTY GILCHRIST, CCIM
Senior Associate
+1 816 216 5655
marty.gilchrist@cushwake.com

DISCLAIMER

©2024 Cushman & Wakefield. All rights reserved. This information has been obtained from sources believed to be reliable but has not been verified. NO WARRANTY OR REPRESENTATION, EXPRESS OR IMPLIED, IS MADE AS TO THE CONDITION OF THE PROPERTY (OR PROPERTIES) REFERENCED HEREIN OR AS TO THE ACCURACY OR COMPLETENESS OF THE INFORMATION CONTAINED HEREIN, AND SAME IS SUBMITTED SUBJECT TO ERRORS, OMISSIONS, CHANGE OF PRICE, RENTAL OR OTHER CONDITIONS, WITHDRAWAL WITHOUT NOTICE, AND TO ANY SPECIAL LISTING CONDITIONS IMPOSED BY THE PROPERTY OWNER(S). ANY PROJECTIONS, OPINIONS OR ESTIMATES ARE SUBJECT TO UNCERTAINTY AND DO NOT SIGNIFY CURRENT OR FUTURE PROPERTY PERFORMANCE.